

Instant Wireless™ Series

Dual-Band Wireless Access Point



Use this guide to install: WAP51AB

User Guide

 **LINKSYS**™

COPYRIGHT & TRADEMARKS

Copyright © 2002 Linksys, All Rights Reserved. Linksys is a registered trademark of Linksys. Instant Wireless is a trademark of Linksys. Microsoft, Windows, and the Windows logo are registered trademarks of Microsoft Corporation. All other trademarks and brand names are the property of their respective proprietors.

LIMITED WARRANTY

Linksys guarantees that every Instant Wireless™ Dual-Band Wireless Access Point is free from physical defects in material and workmanship under normal use for one year from the date of purchase. If the product proves defective during this warranty period, call Linksys Technical Support in order to obtain a Return Authorization Number. BE SURE TO HAVE YOUR PROOF OF PURCHASE AND A BARCODE FROM THE PRODUCT'S PACKAGING ON HAND WHEN CALLING. RETURN REQUESTS CANNOT BE PROCESSED WITHOUT PROOF OF PURCHASE. When returning a product, mark the Return Authorization Number clearly on the outside of the package and include a copy of your original proof of purchase. All customers located outside of the United States of America and Canada shall be held responsible for shipping and handling charges.

IN NO EVENT SHALL LINKSYS' LIABILITY EXCEED THE PRICE PAID FOR THE PRODUCT FROM DIRECT, INDIRECT, SPECIAL, INCIDENTAL, OR CONSEQUENTIAL DAMAGES RESULTING FROM THE USE OF THE PRODUCT, ITS ACCOMPANYING SOFTWARE, OR ITS DOCUMENTATION. LINKSYS DOES NOT OFFER REFUNDS FOR ANY PRODUCT. Linksys makes no warranty or representation, expressed, implied, or statutory, with respect to its products or the contents or use of this documentation and all accompanying software, and specifically disclaims its quality, performance, merchantability, or fitness for any particular purpose. Linksys reserves the right to revise or update its products, software, or documentation without obligation to notify any individual or entity. Please direct all inquiries to:

Linksys P.O. Box 18558, Irvine, CA 92623.

FCC STATEMENT

This product has been tested and complies with the specifications for a Class B digital device, pursuant to Part 15 of the FCC Rules. These limits are designed to provide reasonable protection against harmful interference in a residential installation. This equipment generates, uses, and can radiate radio frequency energy and, if not installed and used according to the instructions, may cause harmful interference to radio communications. However, there is no guarantee that interference will not occur in a particular installation. If this equipment does cause harmful interference to radio or television reception, which is found by turning the equipment off and on, the user is encouraged to try to correct the interference by one or more of the following measures:

- Reorient or relocate the receiving antenna
- Increase the separation between the equipment or devices
- Connect the equipment to an outlet other than the receiver's
- Consult a dealer or an experienced radio/TV technician for assistance

FCC Radiation Exposure Statement

This equipment complies with FCC radiation exposure limits set forth for an uncontrolled environment. This equipment should be installed and operated with minimum distance 20cm between the radiator and your body.

This device must not be co-located or operating in conjunction with any other antenna or transmitter other than those contained within this device.

Table of Contents

Chapter 1: Introduction	1
The Instant Wireless™ Dual-Band Wireless Access Point	1
Features	1
Package Contents	2
System Requirements	2
Chapter 2: Planning Your Wireless Network	3
Network Topology	3
Roaming	3
Chapter 3: Getting to Know the Dual-Band Wireless Access Point	4
The Dual-Band Wireless Access Point's Back Panel	4
The Dual-Band Wireless Access Point's Front Panel	5
Chapter 4: Connecting the Dual-Band Wireless Access Point	6
Chapter 5: Setting Up the Dual-Band Wireless Access Point	7
Chapter 6: Configuring the Dual-Band Wireless Access Point	16
The Setup Tab	16
The Password Tab	20
The Status Tab	21
The Help Tab	22
The Filter Tab	23
The Wireless Tab	24
Appendix A: Troubleshooting	27
Frequently Asked Questions	27
Appendix B: Setting Up the TCP/IP and IPX Protocols	32
Setting Up TCP/IP in Windows	32
TCP/IP Setup for Windows 95, 98, and Millennium	33
IPX Setup for Windows 95, 98, and Millennium	33
TCP/IP Setup for Windows NT 4.0	34
IPX Setup for Windows NT 4.0	34
TCP/IP Setup for Windows 2000	35
IPX Setup for Windows 2000	35
TCP/IP Setup for Windows XP	36
Appendix C: Glossary	37
Appendix D: Specifications	45
Environmental	46
Appendix E: Warranty Information	47
Appendix F: Contact Information	48

Chapter 1: Introduction

The Instant Wireless™ Dual-Band Wireless Access Point

Install an access point that protects your infrastructure investment without limiting you to a single type of wireless technology. The Instant Wireless™ Dual-Band Wireless Access Point works simultaneously with both 802.11a and 802.11b wireless standards to bring you the ultimate in wireless freedom. This means you can enjoy the broadest spectrum of wireless networking now without the worry of a costly upgrade later.

The Dual-Band Wireless Access Point's antennas enhance reception and provide seamless roaming through your wireless networks. An advanced user authentication feature and security encryption of up to 152 bits give you the highest level of network security. It's both easy to install and easy to use. With Internet browser-based configuration and Windows-Based Setup Wizard, you're always in control.

Compact, lightweight, and power-efficient, the Dual-Band Wireless Access Point is the perfect wireless networking solution, no matter which wireless networking standard you choose to use.

Features

- High Speed Wireless Networking
- Protection for Your Wireless Investment - Supports Both 2.4GHz and 5GHz Wireless Technology
- Wireless Security with WEP Encryption of up to 152-bits and MAC Address Filtering
- Quick and Easy to Use with Web-Based Management and Windows-Based Setup Wizard
- Operates in Both the 5GHz and 2.4GHz Bands
- Wi-Fi Compatibility with 802.11a and 802.11b Technology
- Supports up to 64 Simultaneous Wireless Users
- Free Technical Support - 24 Hours a Day, 7 Days a Week, Toll-Free U.S. Calls
- 1-Year Limited Warranty



Figure 1-1

Package Contents

- One Dual-Band Wireless Access Point
- One Setup CD-ROM with User Guide
- One Power Adapter
- One Quick Installation guide
- One Registration Card

System Requirements

One Pentium Class PC (200MHz or Faster Processor) with:

- 64MB RAM,
- Internet Explorer 4.0 or Netscape Navigator 4.7 or Higher for Web-based configuration,
- one CD-ROM Drive, and
- 802.11a or 802.11b Wireless Adapter with TCP/IP Protocol Installed
- a Network Adapter with Category 5 Ethernet Network Cabling and TCP/IP protocol installed

Chapter 2: Planning Your Wireless Network

Network Topology

A wireless LAN is a group of computers, each equipped with one Instant Wireless™ Series adapter. Computers in a wireless LAN must be configured to share the same radio channel.

The Instant Wireless™ Series adapters provide access to a wired LAN for wireless workstations. An integrated wireless and wired LAN is called an infrastructure configuration. A group of Instant Wireless™ Series adapter users and an Instant Wireless™ Dual-Band Wireless Access Point compose a Basic Service Set (BSS). Each Instant Wireless™ Series adapter PC in a BSS can talk to any computer in a wired LAN infrastructure via the Dual-Band Wireless Access Point.

An infrastructure configuration extends the accessibility of an Instant Wireless™ Series adapter PC to a wired LAN, and doubles the effective wireless transmission range for two Instant Wireless™ Series adapter PCs. Since the Dual-Band Wireless Access Point is able to forward data within its BSS, the effective transmission range in an infrastructure LAN is doubled.

Roaming

Infrastructure mode also supports roaming capabilities for mobile users. More than one BSS can be configured as an Extended Service Set (ESS). This continuous network allows users to roam freely within an ESS. All PCs equipped with an Instant Wireless™ Series adapter within one ESS must be configured with the same ESS ID and use the same radio channel.

Before enabling an ESS with roaming capability, choosing a feasible radio channel and optimum Dual-Band Wireless Access Point position is recommended. Proper Access Point positioning combined with a clear radio signal will greatly enhance performance.

Chapter 3: Getting to Know the Dual-Band Wireless Access Point

The Dual-Band Wireless Access Point's Back Panel

The Access Point's ports, where a network cable is connected, are located on the Access Point's back panel.



Figure 3-1

- LAN** This LAN (Local Area Network) port connects to Ethernet network devices, such as a hub, switch, or router.
- Power** The **Power** port is where you will connect the power adapter.
- Power Switch** The **Power Switch** is where you will turn the Access Point on and off.
- Reset Button** There are two ways to Reset the Access Point's factory defaults. Either press the Reset Button, for approximately ten seconds, or restore the defaults from the password tab in the Access Point's Web-Based Utility.



Important: Resetting the Access Point will erase all of your settings (WEP Encryption, Wireless and LAN settings, etc.) and replace them with the factory defaults. Do not reset the Access Point if you want to retain these settings

The Dual-Band Wireless Access Point's Front Panel



Figure 3-2

- Power** *Green.* The **Power** LED lights up when the Access Point is powered on.
- Diag** *Red.* The **Diag** LED indicates the Access Point's self-diagnosis mode during boot-up and restart. It will turn off upon completing the diagnosis. If this LED stays on for an abnormally long period of time, refer to the Troubleshooting Appendix.
- WLAN Act** *Green.* If the WLAN's **Act** LED is flickering, the Access Point is actively sending or receiving data to or from one of the devices on the network.
- WLAN Link** *Green.* The WLAN's **Link** LED lights whenever there is a successful wireless connection.
- LAN Act/Link** *Green.* The LAN's **LINK** LED serves two purposes. If the LED is continuously lit, the Access Point is successfully connected to a device through the LAN port. If the LED is flickering, it is an indication of any network activity.
- LAN Full/Col** *Green.* The LAN's **Full/Col** LED also serves two purposes. When this LED is continuously lit, the connection made through the corresponding port is running in Full Duplex mode. A flickering LED indicates that the connection is experiencing collisions. Infrequent collisions are normal. If this LED blinks too often, there may be a problem with your connection. Refer to the Troubleshooting Appendix if you think there is a problem.
- LAN 100** *Orange.* The LAN's **100** LED indicates when a successful 100Mbps connection is made through the LAN port.

Chapter 4: Connecting the Dual-Band Wireless Access Point

1. **Locate an optimum location for the Access Point.** The best place for the Access Point is usually at the center of your wireless network, with line of sight to all of your mobile stations.
2. **Fix the direction of the antenna.** Try to place it in a position which can best cover your wireless network. Normally, the higher you place the antenna, the better the performance will be. The antenna's position enhances the receiving sensitivity.
3. **Connect a standard Ethernet network cable to the Access Point.** Then, connect the other end of the Ethernet cable to a switch or hub. The Access Point will then be connected to your 10/100 Network.
4. **Connect the AC Power Adapter to the Access Point's Power Socket.** Only use the power adapter supplied with the Access Point. Use of a different adapter may result in product damage.

Now that the hardware installation is complete, proceed to **Chapter 5: Setting Up the Dual-Band Wireless Access Point** for directions on how to set up the Access Point.



Note: In order for all other wireless devices to communicate with the Access Point, those devices must be operating in the **Infrastructure Mode**. If any wireless devices are configured in the **Ad Hoc Mode**, they *will not* be recognized by the Access Point.

Important Note: This device is restricted to indoor operations in comply with FCC 15.407 (e).

Chapter 5: Setting Up the Dual-Band Wireless Access Point



Have You: Connected the Access Point to a hub, switch or router on your wired network as shown in Chapter 4: Connecting the Dual-Band Wireless Access Point? The Access Point can only be set up through your wired network.

Now that you've connected the Access Point to your wired network, you are ready to begin setting it up. This Setup Wizard will take you through all the steps necessary to configure the Access Point.



Note: While the Access Point has been designed to work correctly right out of the box, setting it up on a wireless computer will require you to use the Linksys default settings. These settings can then be changed with the Setup Wizard or Web-based Browser Utility.

1. Insert the Setup Wizard CD into your PC's CD-ROM drive. Your PC must be on your wired network to set up the Access Point.
2. The screen in Figure 5-1 should appear on your monitor. If it does not, this means the autorun is not functioning. Start the Setup Wizard manually by clicking the **Start** button, selecting **Run**, and typing **d:\setup.exe** (where "D" is your PC's CD-ROM drive). Click the **Setup** button to continue this Setup Wizard. Clicking the **User Guide** button opened this User Guide. To access the Linksys web site on an active Internet connection, click the **Linksys Web** button or to exit this Setup Wizard, click the **Exit** button.



Figure 5-1

3. The following screen, shown in Figure 5-2, displays how the Access Point is configured in this Setup Wizard. Optimally, you should perform this setup through a PC on your wired network. Click the **Next** button to continue or **Exit** to exit the Setup Wizard.



Figure 5-2

4. The next screen to appear, shown in Figure 5-3, will display a list of access points on your network along with the status information for each access point. If this is the only access point on your network, it will be the only one displayed. If there are more than one displayed, select the Access Point by clicking on it and click the **Yes** button to continue or **No** to exit the Setup Wizard.



Figure 5-3

5. You will be asked to sign onto the Access Point you've selected, as shown in Figure 5-4. Enter the Password you've assigned. If none has been assigned, enter the default password: **admin**. Then, click the **OK** button. (This password can be changed from the Web-based Utility's Password tab.)



Figure 5-4

6. As shown in Figure 5-5, the IP Settings screen will appear next. Enter an IP Address, Subnet Mask, and enter a unique access point name for the Access Point appropriate to your network. Then, click the **Next** button to continue or **Back** to return to the previous page.

- **IP Address.** This IP address must be unique to your network. (The default IP address is 192.168.1.250.)



Figure 5-5



Figure 5-6

- **Subnet Mask.** The Access Point's Subnet Mask must be the same as your Ethernet network.
 - **Access Point Name.** Assign a name to the Access Point. Unique, memorable names are helpful, especially if you are employing multiple access points on the same network.
7. As shown in Figure 5-6, the Basic Settings screen for your 5 GHz/802.11a wireless products will appear. Enter your wireless network's SSID and select the channel at which the network broadcasts its wireless signal. Then, click the **Next** button to continue or **Back** to return to the previous page.
- **SSID.** The SSID is the unique name shared among all points in a wireless network. The SSID must be identical for all points in the wireless network. It is case sensitive and must not exceed 32 characters, which may be any keyboard character. Make sure this setting is the same for all points in your wireless network.
 - **Channel.** Select the appropriate channel from the list provided to correspond with your network settings, between 36 and 64. All points in your wireless network must use the same channel in order to function correctly.
8. The Security Settings screen (Figure 5-7) for your 5 GHz/802.11a wireless products will appear next. From this screen, you will set the Wired Equivalent Privacy (WEP) encryption, 64-bit/128-bit/152-bit, for your wireless network. Select a WEP configuration method and a WEP key.

The WEP key can consist of the letters "A" through "F" and the numbers "0" through "9" and should be 10 characters in length for 64-bit encryption, 26 characters in length for 128-bit encryption, or 32 characters in length for 152-bit encryption. All points in your wireless network must use the same WEP key to utilize WEP encryption.

Then, click the **Next** button to continue or **Back** to return to the previous page.

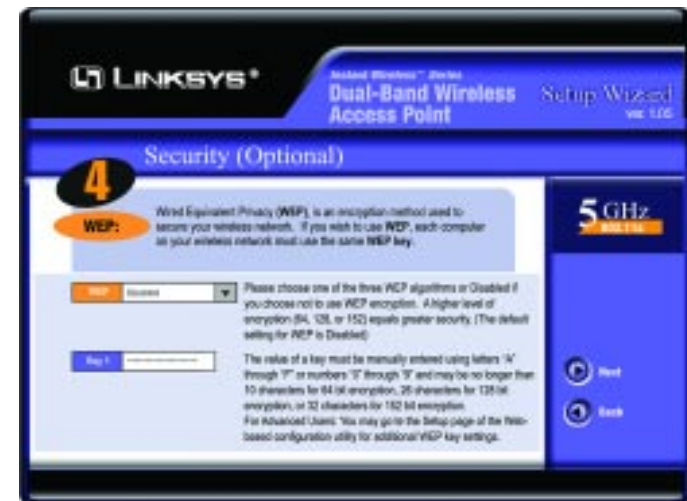


Figure 5-7

9. As shown in Figure 5-8, the Basic Settings screen for your 2.4 GHz/802.11b wireless products will appear. Enter your wireless network's SSID and select the channel at which the network broadcasts its wireless signal. Then, click the **Next** button to continue or **Back** to return to the previous page.

- **SSID.** The SSID is the unique name shared among all points in a wireless network. The SSID must be identical for all points in the wireless network. It is case sensitive and must not exceed 32 characters, which may be any keyboard character. Make sure this setting is the same for all points in your wireless network.
- **Channel.** Select the appropriate channel from the list provided to correspond with your network settings, between 1 and 11 (in North America). All points in your wireless network must use the same channel in order to function correctly.



Figure 5-8



Note: WEP encryption should be used whenever communicating over a wireless network. Wireless transmissions, by their very nature, are unprotected and WEP encryption helps to close this hole in security and make your wireless network safer to use.

10. The Security Settings screen (Figure 5-9) for your 2.4 GHz/802.11b wireless products will appear next. From this screen, you will set the Wired Equivalent Privacy (WEP) encryption, 64-bit/128-bit, for your wireless network. Select a WEP configuration method and a WEP passphrase.

- **WEP (Disable/64-bit WEP/128-bit WEP).** In order to utilize WEP encryption, select the WEP setting from the pull-down menu. If you do not wish to utilize WEP encryption, make sure **Disable** is selected.
- **Passphrase.** This is a text string with a maximum of 16 alphanumeric characters used for generating a WEP Key. Type the passphrase here. This passphrase may not work with non-Linksys products due to possible incompatibility with other vendors' passphrase generators. If you'd rather not use a passphrase and would rather enter the WEP Key manually, click the **Next** button.

Click the **Next** button to continue or **Back** to return to the previous page.



Figure 5-9



Note: The Access Point's passphrase function when mixing products from other manufacturers into your wireless network. Linksys products should always be used for optimum functionality. If another company's wireless product is used, however, the WEP key should be set manually.

11. The following Security screen, shown in Figure 5-7, will allow you to enter your WEP key. Each point in your wireless network must use the same WEP key for the network to function properly. Verify that the appropriate key is entered and click the **Next** button to continue or **Back** to return to the previous page.

The WEP key can consist of the letters “A” through “F” and the numbers “0” through “9” and should be 10 characters in length for 64-bit encryption or 26 characters in length for 128-bit encryption. All points in your wireless network must use the same WEP key to utilize WEP encryption.

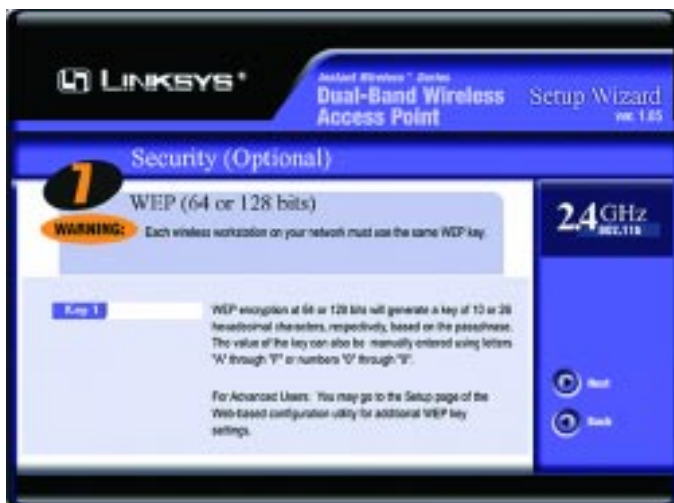


Figure 5-10

12. You should now review the settings you’ve chosen, as shown in Figure 5-11. If these settings are correct, click the **Yes** button to save these settings. If you wish to change any of the settings, click the **No** button. You will exit the Setup Wizard and can start it again to revise your settings.



Figure 5-11

13. At this point, the configuration performed with the Setup Wizard is complete, as shown in Figure 5-12. To configure any other Access Points in your network, you can run this Setup Wizard again. Click the **Exit** button to exit the Setup Wizard.



Figure 5-12

Chapter 6: Configuring the Dual-Band Wireless Access Point



Note: The Access Point is designed to function properly after using the Setup Wizard. This chapter is provided solely for those who wish to perform more advanced configuration or monitoring.

The Access Point has been designed to be functional right out of the box, with the default settings in the Setup Wizard. However, if you'd like to change these settings, the Access Point can be configured through your web browser with the Web-Based Utility. This chapter explains how to configure the Access Point in this manner.

Open your web browser and type the IP Address you entered in the Setup Wizard. (The default IP address is 192.168.1.250.) (Should you need to learn what IP Address the Access Point presently uses, run the Setup Wizard again. It will scan the Access Point and give you its IP Address.) Press the **Enter** key and the following screen, shown in Figure 6-1, will appear. Leave the User Name field blank. The first time you open the Web-Based Utility, use the default password **admin**. You can set a new password from the Password tab.



Figure 6-1

The Setup Tab

The first screen that appears, shown in Figure 6-2, is the “Setup” tab. This allows you to change the Access Point’s general settings. Change these settings as described here and click the **Apply** button to apply your changes or **Cancel** to cancel your changes. If you require online help, click the **Help** button.

- **Firmware.** This will display the Access Point’s current firmware version. Firmware can be upgraded from the Help tab.
- **Access Point Name.** You may assign any name to the Access Point. Unique, memorable names are helpful, especially if you are employing multiple access points on the same network. Verify this is the name you wish to use and click the **Apply** button to set it.

Dual-Band Wireless Access Point

- **Static IP Address.** This IP address must be unique to your network. (The default IP address is 192.168.1.250. As this is a private IP address, there is no need to purchase a separate IP address from your service provider.) Verify the address and click the **Apply** button to save changes.
- **Subnet Mask.** The Access Point’s Subnet Mask (or IP Mask) must be the same as your Ethernet (wired) network. Verify this is correct and click the **Apply** button to set it.



Figure 6-2

The following entries are for both 5GHz/802.11a and 2.4GHz/802.11b:

- **SSID.** The SSID is the unique name shared among all points in a wireless network. The SSID must be identical for all points in the wireless network. It is case sensitive and must not exceed 32 alphanumeric characters, which may be any keyboard character. Make sure this setting is the same for all points in your wireless network.

- **Channel.** Select the appropriate channel from the list provided to correspond with your network settings. This should be between 1 and 11 (in North America) for 2.4GHz/802.11b devices and 36 and 64 (in North America) for 5GHz/802.11a devices. All points in your wireless network must use the same channel in order to function correctly.
- **WEP.** The WEP Encryption method is **Disabled** by default. To enable WEP, click the **WEP Key Setting** button.

Click the **Apply** button to apply your changes or **Cancel** to cancel your changes. If you require online help, click the **Help** button.

SETTING WEP ENCRYPTION:

Setting WEP Encryption through the Web-based Browser Utility is done by clicking the **WEP Key Setting** button on the Setup Screen as shown in Figure 6-2.

This will open the WEP Key Setting screen. This screen is shown in Figure 6-3 for 5GHz/802.11a or Figure 6-4 for 2.4GHz/802.11b. Select the WEP encryption for the type(s) of wireless technology you are using. From this screen, you can select the type of WEP encryption to use as well as set the WEP Key for that encryption.



Important: Always remember that each point in your wireless network **MUST** use the same WEP Encryption method and encryption key or your wireless network will not function properly.



Figure 6-3



Figure 6-4

From the pull-down menu, select the type of WEP encryption you wish to use.

If you are using 5GHz/802.11a wireless technology, you will need to enter the key manually.

If you are using 2.4GHz/802.11b wireless technology and wish to use a WEP Passphrase, it can be a maximum of 16 alphanumeric characters. This passphrase may not work with non-Linksys products due to possible incompatibility with other vendors' passphrase generators. The WEP Key can be generated using your Passphrase or you can enter it manually. Type that here.

The WEP key must consist of the letters "A" through "F" and the numbers "0" through "9" and should be 10 characters in length for 64-bit encryption or 26 characters in length for 128-bit encryption. (When using 5GHz/802.11a wireless technology, 152-bit encryption is also available. The WEP key under this setting should be 32 characters in length.) All points in your wireless network must use the same WEP key to utilize WEP encryption.

Once the Passphrase is entered, click the **Generate** key to generate a WEP key.

Click the **Apply** button to apply your changes and return to the Setup tab or **Cancel** to cancel your changes. To clear any of the information you've typed but not yet applied, click the **Clear** button.

The Password Tab



Figure 6-7

The “Password” tab, shown in Figure 6-7, allows you to change the Access Point’s password and restore factory defaults.

Changing the sign-on password for the Access Point is as easy as typing the password into the **AP Password** field. Then, type it again into the second field to confirm.

To restore the Access Point’s factory default settings, click the **Yes** button beside **Restore Factory Defaults**.

Click the **Apply** button to apply your changes or **Cancel** to cancel your changes. If you require online help, click the **Help** button.



Important: Restoring the Access Point’s factory defaults will erase all of your settings (WEP Encryption, Wireless and LAN settings, etc.), and replace them with the factory defaults. Do not reset the Access Point if you want to retain these settings

The Status Tab



Figure 6-8

The “Status” tab, shown in Figure 6-8, will display current information on the Access Point, its settings and performance.

- **Firmware Version.** This displays the current version of the Access Point’s firmware. Firmware should only be upgraded if you experience problems with the Access Point and can be upgraded from the Help tab.
- **IP Address.** This IP address is the unique address to your network.
- **Subnet Mask.** The Access Point’s Subnet Mask, which is the same as your Ethernet network.
- **SSID.** The SSID is the unique name shared among all points in a wireless network.
- **Encryption Function.** The encryption method you chose in the Setup Wizard or changed from the Setup Tab of this Web-based Utility is displayed here.
- **Channel.** This is the channel at which your wireless network broadcasts. All points in your wireless network must use the same channel in order to function correctly.

The Help Tab

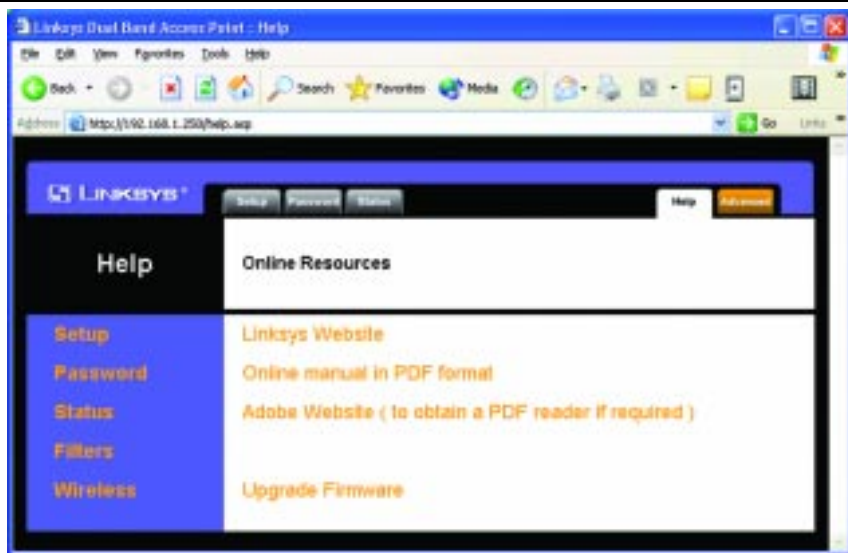


Figure 6-9

For help on the various tabs in this Web-based Utility, along with upgrading the Access Point's firmware and viewing this User Guide, click the "Help" tab, shown in Figure 6-9.

The help files for the various tabs in this Web-based Utility are listed by tab name on the left-hand side of the screen.

The following resources require an Internet connection in order to access them.

Click the **Linksys Website** link to connect to the Linksys homepage for Knowledgebase help files and information about other Linksys products.

For an **Online Manual in PDF format**, click that text link. The manual will appear in Adobe pdf format. If you do not have the Adobe PDF Reader installed on your computer, click the **Adobe Website** link to download this software.

Firmware can be upgraded by clicking the **Upgrade Firmware** link. Do not upgrade your firmware unless you are experiencing problems with the Access Point.

UPGRADING FIRMWARE:

Before upgrading the Access Point's firmware, be sure to download the firmware from Linksys's website at www.linksys.com.

Once that is done, click the **Upgrade Firmware** link on the Help Tab. This will bring up the screen shown in Figure 6-10.

Type in the location of the firmware's file or click the **Browse** button to find the file. Then, click the **Upgrade** button to upgrade the firmware.



Figure 6-10

The Filter Tab

The "Filter" tab, shown in Figure 6-11, allows you to block and allow certain computers, by their MAC Address, from communicating with the Access Point.

To enable filtering of computers by their MAC Addresses, click the **Enable** radio button. To disable this feature, click the radio button by **Disable**.

Type the MAC Addresses for those PCs you wish to allow access to the Access Point in the MAC Address fields. As long as Filtering is enabled, PCs with MAC Addresses not entered in the MAC Address field will not be allowed to communicate with the Access Point.

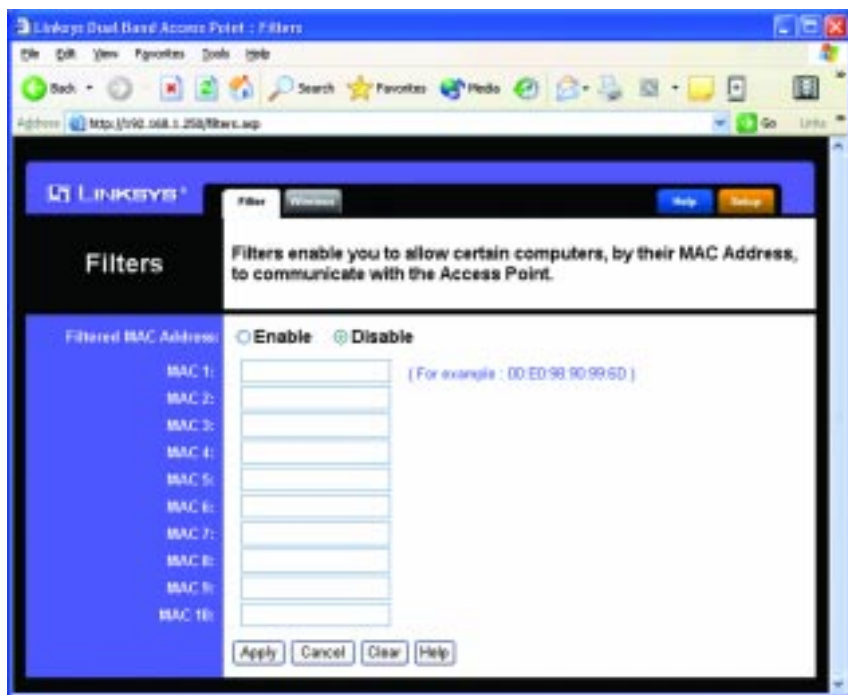


Figure 6-11

When you've completed making any changes on this tab, click the **Apply** button to save those changes or **Cancel** to exit the Web-based Utility without saving changes. To clear any of the information you've typed by not yet applied, click the **Clear** button. For more information on this tab, you can click the **Help** button.

The Wireless Tab

Before making any changes to the Wireless tab, shown in Figure 6-12, please check your wireless settings on other systems, as these changes will alter the effectiveness of the Access Point. In most cases, these settings do not need to be changed.

- **Beacon Interval.** This value indicates the frequency interval of the beacon. A beacon is a packet broadcast by the Access Point to keep the network synchronized. A beacon includes the wireless LAN service area, the AP address, the Broadcast destination addresses, a time stamp, Delivery Traffic Indicator Maps, and the Traffic Indicator Message (TIM).
- **RTS Threshold.** This value should remain at its default setting of 2,346. Should you encounter inconsistent data flow, only minor modifications are recommended.



Figure 6-12

- **Fragmentation Length.** This specifies the maximum size a data packet will be before splitting and creating a new packet and should remain at its default setting of 2,346. A smaller setting means smaller packets, which will create more packets for each transmission. If you have decreased this value and experience high packet error rates, you can increase it again, but it will likely decrease overall network performance. Only minor modifications of this value are recommended.
- **Data Beacon Rate.** (5GHz/802.11a only) This value, between 1 and 16384, indicates the interval of the Delivery Traffic Indication Message. A Data Beacon Rate field is a countdown field informing clients of the next window for listening to broadcast and multicast messages. When the Access Point has buffered broadcast or multicast messages for associated clients, it sends the next message with a rate value. Access Point Clients hear the beacons and awaken to receive the broadcast and multicast messages.

- **DTIM Interval.** (2.4GHz/802.11b only) This value indicates the interval of the Delivery Traffic Indication Message (DTIM). A DTIM field is a countdown field informing clients of the next window for listening to broadcast and multicast messages. When the Access Point has buffered broadcast or multicast messages for associated clients, it sends the next DTIM with a DTIM Interval value. Access Point Clients hear the beacons and awaken to receive the broadcast and multicast messages.
- **Transmission Rates.** The basic transfer rates should be set depending on the speed of your wireless network. You can select from a range of transmission speeds or select **Best** to have the Access Point automatically engage the network's optimum speed.
- **Preamble Type.** (2.4GHz/802.11b only) The preamble defines the length of the CRC block for communication between the Access Point and a roaming Network Card. (High network traffic areas should use the shorter preamble type.) Select the appropriate preamble type and click the **Apply** button to set it.
- **Authentication Type.** You may choose between **Open System** or **Shared Key**. The Authentication Type default is set to **Open System**, in which the sender and the recipient do NOT share a secret key. Each party generates its own key-pair and asks the receiver to accept the randomly-generated key. Once accepted, this key is used for a short time only. Then a new key is generated and agreed upon. **Shared Key** is when both the sender and the recipient share a secret key.

When you've completed making any changes on this tab, click the **Apply** button to save those changes or **Cancel** to exit the Web-based Utility without saving changes. For more information on this tab, you can click the **Help** button.

Appendix A: Troubleshooting

This chapter provides solutions to problems usually encountered during the installation and operation of the Access Point. Read the description below to solve your problems. If you can't find an answer here, check the Linksys website at www.linksys.com.

Frequently Asked Questions

Can the Access Point act as my DHCP Server?

No. The Access Point is nothing more than a wireless hub, and as such cannot be configured to handle DHCP capabilities.

Can I run an application from a remote computer over the wireless network?

This will depend on whether or not the application is designed to be used over a network. Consult the application's user guide to determine if it supports operation over a network.

Can I play multiplayer games with other users of the wireless network?

Yes, as long as the game supports multiple players over a LAN (local area network). Refer to the game's user guide for more information.

What IEEE 802.11a features are supported?

The product supports the following IEEE 802.11a functions:

- OFDM protocol
- Multi-Channel Roaming
- Automatic Rate Selection
- RTS/CTS feature
- Fragmentation

What IEEE 802.11b features are supported?

The product supports the following IEEE 802.11 functions:

- CSMA/CA plus Acknowledge protocol
- Multi-Channel Roaming
- Automatic Rate Selection
- RTS/CTS feature
- Fragmentation
- Power Management

What is Ad-hoc?

An Ad-hoc wireless LAN is a group of computers, each with a WLAN adapter, connected as an independent wireless LAN. An Ad-hoc wireless LAN is applicable at a departmental scale for a branch or SOHO operation.

What is Infrastructure?

An integrated wireless and wired LAN is called an Infrastructure configuration. Infrastructure is applicable to enterprise scale for wireless access to a central database, or wireless application for mobile workers.

What is Roaming?

Roaming is the ability of a portable computer user to communicate continuously while moving freely throughout an area greater than that covered by a single Access Point. Before using the roaming function, the workstation must make sure that it is the same channel number as the Access Point of the dedicated coverage area.

To achieve true seamless connectivity, the wireless LAN must incorporate a number of different functions. Each node and Access Point, for example, must always acknowledge receipt of each message. Each node must maintain contact with the wireless network even when not actually transmitting data. Achieving these functions simultaneously requires a dynamic RF networking technology that links Access Points and nodes. In such a system, the user's end node undertakes a search for the best possible access to the system. First, it evaluates such factors as signal strength and quality, as well as the message load currently being carried by each Access Point and the distance of each Access Point to the wired backbone. Based on that information, the node next selects the right Access Point and registers its address. Communications between end node and host computer can then be transmitted up and down the backbone.

As the user moves on, the end node's RF transmitter regularly checks the system to determine whether it is in touch with the original Access Point or whether it should seek a new one. When a node no longer receives acknowledgment from its original Access Point, it undertakes a new search. Upon finding a new Access Point, it then re-registers, and the communication process continues.

What is BSS ID?

A specific Ad-hoc LAN is called a Basic Service Set (BSS). Computers in a BSS must be configured with the same BSS ID.

What is ESSID?

An Infrastructure configuration could also support roaming capability for mobile workers. More than one BSS can be configured as an Extended Service Set (ESS). Users within an ESS could roam freely between BSSs while maintaining a continuous connection to the wireless network stations and Access Points.

What is ISM band?

The FCC and their counterparts outside of the U.S. have set aside bandwidth for unlicensed use in the ISM (Industrial, Scientific and Medical) band. Spectrum in the vicinity of 2.4 GHz, in particular, is being made available worldwide. This presents a truly revolutionary opportunity to place convenient high speed wireless capabilities in the hands of users around the globe.

What is Spread Spectrum?

Spread Spectrum technology is a wideband radio frequency technique developed by the military for use in reliable, secure, mission-critical communications systems. It is designed to trade off bandwidth efficiency for reliability, integrity, and security. In other words, more bandwidth is consumed than in the case of narrowband transmission, but the trade-off produces a signal that is, in effect, louder and thus easier to detect, provided that the receiver knows the parameters of the spread-spectrum signal being broadcast. If a receiver is not tuned to the right frequency, a spread-spectrum signal looks like background noise. There are two main alternatives, Direct Sequence Spread Spectrum (DSSS) and Frequency Hopping Spread Spectrum (FHSS).

What is DSSS? What is FHSS? And what are their differences?

Frequency Hopping Spread Spectrum (FHSS) uses a narrowband carrier that changes frequency in a pattern that is known to both transmitter and receiver. Properly synchronized, the net effect is to maintain a single logical channel. To an unintended receiver, FHSS appears to be short-duration impulse noise. Direct Sequence Spread Spectrum (DSSS) generates a redundant bit pattern for each bit to be transmitted. This bit pattern is called a chip (or chipping code). The longer the chip, the greater the probability that the original data can be recovered. Even if one or more bits in the chip are damaged during transmission, statistical techniques embedded in the radio can recover the original data without the need for retransmission. To an unintended receiver, DSSS appears as low power wideband noise and is rejected (ignored) by most narrowband receivers.

Would the information be intercepted while transmitting on air?

WLAN features two-fold protection in security. On the hardware side, as with Direct Sequence Spread Spectrum technology, it has the inherent security feature of scrambling. On the software side, the WLAN series offers the encryption function (WEP) to enhance security and access control. Users can set it up depending upon their needs.

Can Instant Wireless™ products support file and printer sharing?

Instant Wireless™ products perform the same function as LAN products. Therefore, Instant Wireless™ products can work with Netware, Windows NT/2000, or other LAN operating systems to support printer or file sharing.

What is WEP?

WEP is Wired Equivalent Privacy, a data privacy mechanism based on a 40-bit shared-key algorithm, as described in the IEEE 802.11 standard.

What is a MAC Address?

The Media Access Control (MAC) address is a unique number assigned by the manufacturer to any Ethernet networking device, such as a network adapter, that allows the network to identify it at the hardware level. For all practical purposes, this number is usually permanent. Unlike IP addresses, which can change every time a computer logs on to the network, the MAC address of a device stays the same, making it a valuable identifier for the network.

How do I avoid interference?

Using multiple Access Points on the same channel and in close proximity to one another will generate interference. When employing multiple Access Points, be sure to operate each one on a different channel (frequency).

How do I reset the Access Point?

Press the **Reset** button on the back of the Access Point for about ten seconds. This will reset the unit to its default settings.

How do I resolve issues with signal loss?

There is no way to know the exact range of your wireless network without testing. Every obstacle placed between an Access Point and wireless PC will create signal loss. Leaded glass, metal, concrete floors, water and walls will inhibit the signal and reduce range. Start with your Access Point and your wireless PC in the same room and move it away in small increments to determine the maximum range in your environment.

You may also try using different channels, as this may eliminate interference affecting only one channel. Also, due to FCC regulations, more power may be transmitted, using 802.11a, on channels 52, 56, 60 and 64, than on the lower channels. Lastly, check the Advanced tab of the Web-Based Utility and make sure that FULL is selected in the Transmission Rate field.

Does the Turbo Mode work with Windows XP PCs?

No. The Turbo Mode does not work with Windows XP PCs.

Does the Access Point function as a firewall?

No. The Access Point is only a bridge from wired Ethernet to wireless clients.

I have excellent signal strength, but I cannot see my network.

WEP is probably enabled on the Access Point, but not on your wireless adapter (or vice versa). Verify that the same WEP Keys and levels (64, 128 or 152) are being used on all nodes on your wireless network.

What is the maximum number of users the Access Point facilitates?

No more than 65, but this depends on the volume of data and may be less if many users create a large amount of network traffic.

How many channels/frequencies are available with the Access Point?

Using 802.11a, there are eight available frequencies, ranging from 5.15GHz to 5.32GHz. Using 802.11b, there are eleven available channels, ranging from 1 to 11.

What is Turbo mode?

Turbo mode allows high-speed connections, but severely limits range. Turbo mode must be enabled on both the Access Point and the wireless PCs to function. Turbo mode is not compatible with Windows XP and may only function with Linksys 5GHz wireless adapters.

What is the difference in range between 802.11a and 802.11b products?

Overall, range will be a little less in a typical environment, while higher speeds may be achieved with 802.11a, throughput degrades more quickly. (See Figure A-1.)

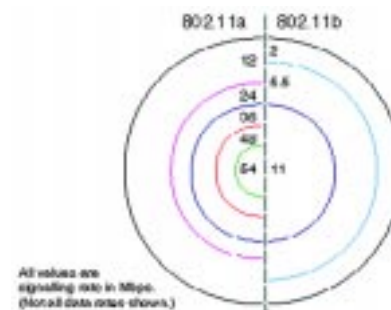


Figure A-1

Appendix B: Setting Up the TCP/IP and IPX Protocols

Setting Up TCP/IP in Windows

Before a computer can communicate with the Access Point, it must be configured with the TCP/IP protocol. If you know how to set up TCP/IP on your computers, do so now. Otherwise, use the guidelines below to help get TCP/IP installed on all of the computers that need to communicate with the Access Point. If you are unable to successfully install TCP/IP on one or more computers after following the directions, contact the manufacturer of your computers' network operating system for further assistance. Check with your network administrator for your TCP/IP settings.

The directions below provide general guidelines for coming up with IP addresses and subnet masks. Check with your network administrator to see if you need to use specific IP addresses or DHCP settings.

First, each computer on the network will require an IP address, which is a series of numbers, separated by periods, identifying the PC on the network. To make things simple, you should use the following numbering scheme:

192.168.1.X

In this example, X is a unique, arbitrarily assigned number from 1 to 254. Each computer must have its own unique X number. Note: Never use 0, 250 or 255 for X. These numbers are reserved by TCP/IP for other uses.

For example, if you have three computers, you could number them as follows:

192.168.1.17
192.168.1.44
192.168.1.126

In this case, 17, 44, and 126 are arbitrary numbers between 1 and 254.

Each computer will also require a subnet mask, which is a numerical “filter” that tells a computer what kinds of TCP/IP data packets to accept. If you're not sure which mask to use, the following mask is recommended:

255.255.255.0

The following instructions are provided as examples for reference only. For complete instructions on installing and troubleshooting TCP/IP and IPX, consult your Windows operating system documentation.

TCP/IP Setup for Windows 95, 98, and Millennium

1. Click the **Start** button, select **Settings**, and open the **Control Panel**. Inside the Control Panel, double-click the **Network** icon.
2. If the *TCP/IP Protocol* is listed for your network adapter, go to step five. Otherwise, click the **Add** button.
3. When the **Component Type** window appears, select **Protocol** and click the **Add** button.
4. Select **Microsoft** in the Manufacturers list and choose **TCP/IP** in the Network Protocols list. Then, click the **OK** button.
5. When the Network window reappears, click **TCP/IP**. Then, click the **Properties** button.
6. Select **Specify an IP Address**.
7. Enter an IP Address for the computer, along with a Subnet Mask. Click the **OK** button. If you do not have these values, consult your network administrator.
8. When the Network window reappears, click the **OK** button. Restart your machine. TCP/IP has now been successfully installed.

IPX Setup for Windows 95, 98, and Millennium

1. Click the **Start** button, select **Settings**, and open the **Control Panel**. Inside the Control Panel, double-click the **Network** icon.
2. If the *TCP/IP Protocol* is listed for your network adapter, go to step four. Otherwise, click the **Add** button.
3. When the **Component Type** window appears, select **Protocol** and click the **Add** button.
4. Select **Microsoft** in the Manufacturers list and choose **IPX/SPX protocol** in the Network Protocols list. Then, click the **OK** button.

TCP/IP Setup for Windows NT 4.0

1. Click the **Start** button, select **Settings**, and open the **Control Panel**. Inside the Control Panel, double-click the **Network** icon.
2. When the **Network** window appears, click the **Protocols** tab. Then, click the **Add** button.
3. Find the **TCP/IP protocol** in the **Select Network Protocol** field. Click it once and then click the **OK** button.
4. When asked if you want to use DHCP, choose **No**.
5. If asked to supply your Windows NT CD, do so. NT will copy the necessary files to your system. You may have to switch between the Access Point's Setup CD and the NT CD.
6. When TCP/IP appears in the **Network Protocols** window, click the **Bindings** tab. Windows will store your new bindings.
7. Click the **Protocols** tab. Then, select **TCP/IP**.
8. Click the **Properties** button. Select the type of network adapter you have from the Adapters box and select **Specify an IP Address**.
9. Enter the computer's IP Address and Subnet Mask. Check with your network administrator for your settings.
10. Enter your Default Gateway if you have one.

Note: a Default Gateway is not required. Check with your network administrator.

11. When you finish, click the **OK** button. If NT asks about WINS, ignore it.
12. When the **Network** window reappears, click the **Close** button. Restart your computer when prompted. TCP/IP has now been successfully installed.

IPX Setup for Windows NT 4.0

1. Click the **Start** button, select **Settings**, and open the **Control Panel**. Inside the Control Panel, double-click the **Network** icon.

2. When the **Network** window appears, click the **Protocols** tab. Then, click the **Add** button.
3. Find the **IPX/SPX protocol** in the **Select Network Protocol** field. Click it once and click the **OK** button.

TCP/IP Setup for Windows 2000

1. At the Windows 2000 desktop, right click **My Network Places** and select **Properties**. Then, right click **Local Area Connection**. Choose **Properties**.
2. If the *TCP/IP Protocol* is listed for your network adapter, go to step five. Otherwise, click the **Install** button.
3. When the **Component Type** window appears, select **Protocol**, and click the **Add** button.
4. Select **Internet Protocol (TCP/IP)** from the list and click the **OK** button.
5. When the **Local Area Connection Properties** window reappears, select **TCP/IP**, and click the **Properties** button.
6. Select **Use the following IP Address**.
7. Enter an IP Address for the computer, along with a Subnet Mask and Default Gateway. Then, click the **OK** button. If you do not have these values, consult your network administrator.
8. When the **Local Area Connection Properties** window reappears, click the **OK** button. TCP/IP has now been successfully installed.

IPX Setup for Windows 2000

1. At the Windows 2000 desktop, right click **My Network Places**. Then right click **Local Area Connection**. Choose **Properties**.
2. If the *NWLink IPX/SPX/NetBIOS Compatible Transport Protocol* is listed for your network adapter, click the **Cancel** button. Otherwise, click the **Install** button.
3. When the Component Type window appears, select **Protocol** and click the **Install** button.

4. Select **NWLink IPX/SPX/NetBIOS Compatible Transport Protocol** from the list and click the **OK** button.
5. When the **Network** window reappears, click the **OK** button. Restart your computer. NWLink IPX/SPX/NetBIOS Compatible Transport Protocol has now been successfully installed.

TCP/IP Setup for Windows XP

1. Click the **Start** button and open the **Control Panel**.
2. Double click the **Network and Internet Connections** icon.
3. Double click the **Network Connections** icon.
4. Right click the **Local Area Connection** icon and select **Properties**.
5. If the *TCP/IP Protocol* is listed for your network adapter, go to step five. Otherwise, click the **Install** button.
6. When the **Component Type** window appears, select **Protocol**, and click the **Add** button.
7. Select **Internet Protocol (TCP/IP)** from the list and click the **OK** button.
8. When the **Local Area Connection Properties** window reappears, select **TCP/IP**, and click the **Properties** button.
9. Select **Use the following IP Address**.
10. Enter an IP Address for the computer, along with a Subnet Mask and Default Gateway. Then, click the **OK** button. If you do not have these values, consult your network administrator.
11. When the **Local Area Connection Properties** window reappears, click the **OK** button. TCP/IP has now been successfully installed..

Appendix C: Glossary

Adapter - Printed circuit board that plugs into a PC to add to capabilities or connectivity to a PC. In a networked environment, a network interface card is the typical adapter that allows the PC or server to connect to the intranet and/or Internet.

Ad-hoc Network - An ad-hoc network is a wireless network or other small network in which some of the network devices are part of the network only for the duration of a communications session while in some close proximity to the rest of the network.

Backbone - The part of a network that connects most of the systems and networks together and handles the most data.

Bandwidth - The transmission capacity of a given facility, in terms of how much data the facility can transmit in a fixed amount of time; expressed in bits per second (bps).

Beacon Interval - A beacon is a packet broadcast by the Access Point to keep the network synchronized. A beacon includes the wireless LAN service area, the AP address, the Broadcast destination addresses, a time stamp, Delivery Traffic Indicator Maps, and the Traffic Indicator Message (TIM).

Bit - A binary digit. The value - 0 or 1-used in the binary numbering system. Also, the smallest form of data.

Browser - A browser is an application program that provides a way to look at and interact with all the information on the World Wide Web or PC. The word "browser" seems to have originated prior to the Web as a generic term for user interfaces that let you browse text files online.

BSS (Basic Service Set) - A group of wireless Network PC Card users and an Access Point.

Buffer - A buffer is a shared or assigned memory area used by hardware devices or program processes that operate at different speeds or with different sets of priorities. The buffer allows each device or process to operate without being held up by the other. In order for a buffer to be effective, the size of the buffer and the algorithms for moving data into and out of the buffer need to be

considered by the buffer designer. Like a cache, a buffer is a "midpoint holding place" but exists not so much to accelerate the speed of an activity as to support the coordination of separate activities.

CSMA/CA (Carrier Sense Multiple Access/Collision Avoidance) - In local area networking, this is the CSMA technique that combines slotted time-division multiplexing with carrier sense multiple access/collision detection (CSMA/CD) to avoid having collisions occur a second time. This works best if the time allocated is short compared to packet length and if the number of situations is small.

CSMA/CD (Carrier Sense Multiple Access/Collision Detection) - The LAN access method used in Ethernet. When a device wants to gain access to the network, it checks to see if the network is quiet (senses the carrier). If it is not, it waits a random amount of time before retrying. If the network is quiet and two devices access the line at exactly the same time, their signals collide. When the collision is detected, they both back off and each wait a random amount of time before retrying.

CTS (Clear To Send) - An RS-232 signal sent from the receiving station to the transmitting station that indicates it is ready to accept data.

Database - A database is a collection of data that is organized so that its contents can easily be accessed, managed, and updated.

DHCP (Dynamic Host Configuration Protocol) - A protocol that lets network administrators manage centrally and automate the assignment of Internet Protocol (IP) addresses in an organization's network. Using the Internet's set of protocol (TCP/IP), each machine that can connect to the Internet needs a unique IP address. When an organization sets up its computer users with a connection to the Internet, an IP address must be assigned to each machine. Without DHCP, the IP address must be entered manually at each computer and, if computers move to another location in another part of the network, a new IP address must be entered. DHCP lets a network administrator supervise and distribute IP addresses from a central point and automatically sends a new IP address when a computer is plugged into a different place in the network.

DHCP uses the concept of a "lease" or amount of time that a given IP address will be valid for a computer. The lease time can vary depending on how long a user is likely to require the Internet connection at a particular location. It's especially useful in education and other environments where users change fre-

quently. Using very short leases, DHCP can dynamically reconfigure networks in which there are more computers than there are available IP addresses.

DHCP supports static addresses for computers containing Web servers that need a permanent IP address.

Download - To receive a file transmitted over a network. In a communications session, download means receive, upload means transmit.

Driver - A workstation or server software module that provides an interface between a device and the upper-layer protocol software running in the computer; it is designed for a specific device, and is installed during the initial installation of a network-compatible client or server operating system.

DSSS (Direct-Sequence Spread-Spectrum) - DSSS generates a redundant bit pattern for each bit to be transmitted. This bit pattern is called a chip (or chipping code). The longer the chip, the greater the probability that the original data can be recovered. Even if one or more bits in the chip are damaged during transmission, statistical techniques embedded in the radio can recover the original data without the need for retransmission. To an unintended receiver, DSSS appears as low power wideband noise and is rejected (ignored) by most narrowband receivers.

DTIM (Delivery Traffic Indication Message) - A DTIM field is a countdown field informing clients of the next window for listening to broadcast and multicast messages. When the AP has buffered broadcast or multicast messages for associated clients, it sends the next DTIM with a DTIM Interval value. AP Clients hear the beacons and awaken to receive the broadcast and multicast messages.

Dynamic IP Address - An IP address that is automatically assigned to a client station in a TCP/IP network, typically by a DHCP server. Network devices that serve multiple users, such as servers and printers, are usually assigned static IP addresses.

Encryption - A security method that applies a specific algorithm to data in order to alter the data's appearance and prevent other devices from reading the information.

ESS - More than one BSS in a network.

Ethernet - IEEE standard network protocol that specifies how data is placed on and retrieved from a common transmission medium. Has a transfer rate of 10 Mbps. Forms the underlying transport vehicle used by several upper-level protocols, including TCP/IP and XNS.

FHSS (Frequency Hopping Spread Spectrum) - FHSS continuously changes the center frequency of a conventional carrier several times per second according to a pseudo-random set of channels, while chirp spread spectrum changes the carrier frequency. Because a fixed frequency is not used, illegal monitoring of spread spectrum signals is extremely difficult, if not downright impossible depending on the particular method.

Firmware - Programming that is inserted into programmable read-only memory (programmable read-only memory), thus becoming a permanent part of a computing device.

Fragmentation - Breaking a packet into smaller units when transmitting over a network medium that cannot support the original size of the packet.

Gateway - A device that interconnects networks with different, incompatible communications protocols.

Hardware - Hardware is the physical aspect of computers, telecommunications, and other information technology devices. The term arose as a way to distinguish the "box" and the electronic circuitry and components of a computer from the program you put in it to make it do things. The program came to be known as the software.

Hub - The device that serves as the central location for attaching wires from workstations. Can be passive, where there is no amplification of the signals; or active, where the hubs are used like repeaters to provide an extension of the cable that connects to a workstation.

IEEE (The Institute of Electrical and Electronics Engineers) - The IEEE describes itself as "the world's largest technical professional society, promoting the development and application of electrotechnology and allied sciences for the benefit of humanity, the advancement of the profession, and the well-being of our members."

The IEEE fosters the development of standards that often become national and international standards. The organization publishes a number of journals, has many local chapters, and several large societies in special areas, such as the IEEE Computer Society.

Infrastructure - An infrastructure network is a wireless network or other small network in which the wireless network devices are made a part of the network through the Access Point which connects them to the rest of the network.

IP Address - In the most widely installed level of the Internet Protocol (Internet Protocol) today, an IP address is a 32-binary digit number that identifies each sender or receiver of information that is sent in packet across the Internet. When you request an HTML page or send e-mail, the Internet Protocol part of TCP/IP includes your IP address in the message (actually, in each of the packets if more than one is required) and sends it to the IP address that is obtained by looking up the domain name in the Uniform Resource Locator you requested or in the e-mail address you're sending a note to. At the other end, the recipient can see the IP address of the Web page requestor or the e-mail sender and can respond by sending another message using the IP address it received.

ISM band - The FCC and their counterparts outside of the U.S. have set aside bandwidth for unlicensed use in the ISM (Industrial, Scientific and Medical) band. Spectrum in the vicinity of 2.4 GHz, in particular, is being made available worldwide. This presents a truly revolutionary opportunity to place convenient high-speed wireless capabilities in the hands of users around the globe.

LAN - A local area network (LAN) is a group of computers and associated devices that share a common communications line and typically share the resources of a single processor or server within a small geographic area (for example, within an office building).

MAC (Media Access Control) Address - A unique number assigned by the manufacturer to any Ethernet networking device, such as a network adapter, that allows the network to identify it at the hardware level.

Mbps (MegaBits Per Second) - One million bits per second; unit of measurement for data transmission.

Multicasting - Sending data to a group of nodes instead of a single destination.

Network - A system that transmits any combination of voice, video and/or data between users.

Node - A network junction or connection point, typically a computer or work station.

OFDM - OFDM (Orthogonal Frequency Division Multiplexing) works by breaking one high-speed data stream into a number of lower-speed data streams, which are then transmitted in parallel. Each lower speed stream is used to modulate a subcarrier. Essentially, this creates a multi-carrier transmission by dividing a wide frequency band or channel into a number of narrower frequency bands or sub-channels.

Packet - A unit of data routed between an origin and a destination in a network.

Passphrase - Used much like a password, a passphrase simplifies the WEP encryption process by automatically generating the WEP encryption keys for Linksys products.

PC Card - A credit-card sized removable module that contains memory, I/O, or a hard disk.

Port - A pathway into and out of the computer or a network device such as a switch or router. For example, the serial and parallel ports on a personal computer are external sockets for plugging in communications lines, modems and printers.

RJ-45 (Registered Jack-45) - A connector similar to a telephone connector that holds up to eight wires, used for connecting Ethernet devices.

Roaming - The ability to use a wireless device and be able to move from one access point's range to another without losing the connection.

Router - Protocol-dependent device that connects subnetworks together. Routers are useful in breaking down a very large network into smaller subnetworks; they introduce longer delays and typically have much lower throughput rates than bridges.

RTS (Request To Send) - An RS-232 signal sent from the transmitting station to the receiving station requesting permission to transmit.

Server - Any computer whose function in a network is to provide user access to files, printing, communications, and other services.

Software - Instructions for the computer. A series of instructions that performs a particular task is called a "program." The two major categories of software are "system software" and "application software." System software is made up of control programs such as the operating system and database management system (DBMS). Application software is any program that processes data for the user.

A common misconception is that software is data. It is not. Software tells the hardware how to process the data.

SOHO (Small Office/Home Office) - Market segment of professionals who work at home or in small offices.

Spread Spectrum - Spread Spectrum technology is a wideband radio frequency technique developed by the military for use in reliable, secure, mission-critical communications systems. It is designed to trade off bandwidth efficiency for reliability, integrity, and security. In other words, more bandwidth is consumed than in the case of narrowband transmission, but the trade off produces a signal that is, in effect, louder and thus easier to detect, provided that the receiver knows the parameters of the spread-spectrum signal being broadcast. If a receiver is not tuned to the right frequency, a spread-spectrum signal looks like background noise. There are two main alternatives, Direct Sequence Spread Spectrum (DSSS) and Frequency Hopping Spread Spectrum (FHSS).

Static IP Address - A permanent IP address that is assigned to a node in an IP or a TCP/IP network.

Subnet Mask - The method used for splitting IP networks into a series of subgroups, or subnets. The mask is a binary pattern that is matched up with the IP address to turn part of the host ID address field into a field for subnets.

Switch - 1. A data switch connects computing devices to host computers, allowing a large number of devices to share a limited number of ports. 2. A device for making, breaking, or changing the connections in an electrical circuit.

TCP (Transmission Control Protocol) - A method (protocol) used along with the Internet Protocol (Internet Protocol) to send data in the form of message units between computers over the Internet. While IP takes care of handling the

actual delivery of the data, TCP takes care of keeping track of the individual units of data (called packet) that a message is divided into for efficient routing through the Internet.

TCP/IP (Transmission Control Protocol/Internet Protocol) - The basic communication language or protocol of the Internet. It can also be used as a communications protocol in a private network (either an intranet or an extranet). When you are set up with direct access to the Internet, your computer is provided with a copy of the TCP/IP program just as every other computer that you may send messages to or get information from also has a copy of TCP/IP.

Throughput - The amount of data moved successfully from one place to another in a given time period.

Topology - A network's topology is a logical characterization of how the devices on the network are connected and the distances between them. The most common network devices include hubs, switches, routers, and gateways. Most large networks contain several levels of interconnection, the most important of which include edge connections, backbone connections, and wide-area connections.

Upgrade - To replace existing software or firmware with a newer version.

Upload - To transmit a file over a network. In a communications session, upload means transmit, download means receive.

UTP - Unshielded twisted pair is the most common kind of copper telephone wiring. Twisted pair is the ordinary copper wire that connects home and many business computers to the telephone company. To reduce crosstalk or electromagnetic induction between pairs of wires, two insulated copper wires are twisted around each other. Each signal on twisted pair requires both wires. Since some telephone sets or desktop locations require multiple connections, twisted pair is sometimes installed in two or more pairs, all within a single cable.

WEP (Wired Equivalent Privacy) - A data privacy mechanism based on a 64-bit, 128-bit, or 256-bit shared key algorithm, as described in the IEEE 802.11 standard.

Appendix D: Specifications

Standards	IEEE 802.3, 802.3u, 802.11a and 802.11b	
Channels	802.11a	8 Channels (US, Canada)
	802.11b	11 Channels (US, Canada) 13 Channels (Europe) 14 Channels (Japan)
Ports/Buttons	One 10/100 RJ-45 Port, One Power Port, One Reset Button, One Power Switch	
Cabling Type	UTP CAT 5 or better	
Data Rate	Up to 54Mbps	
Transmit Power	802.11a	10dBm
	802.11b	15dBm
LEDs	Power, Diag 802.11a: Act, Link 802.11b: Act, Link LAN: Link/Act, Full/Col, 100	

Environmental

Dimensions	7.31" x 1.88" x 6.88" (186 mm x 48 mm x 175 mm)
Antenna Height	4.5" (114 mm)
Unit Weight	15 oz. (0.42 kg)
Power	External, 5V DC, 2.5A
Certifications	FCC, Canada
Operating Temp.	0°C to 40°C (32°F to 104°F) For Indoor Use Only
Storage Temp.	-20°C to 70°C (-4°F to 158°F)
Operating Humidity	10% to 85% Non-Condensing
Storage Humidity	5% to 90% Non-Condensing

Appendix E: Warranty Information

BE SURE TO HAVE YOUR PROOF OF PURCHASE AND A BARCODE FROM THE PRODUCT'S PACKAGING ON HAND WHEN CALLING. RETURN REQUESTS CANNOT BE PROCESSED WITHOUT PROOF OF PURCHASE.

IN NO EVENT SHALL LINKSYS'S LIABILITY EXCEED THE PRICE PAID FOR THE PRODUCT FROM DIRECT, INDIRECT, SPECIAL, INCIDENTAL, OR CONSEQUENTIAL DAMAGES RESULTING FROM THE USE OF THE PRODUCT, ITS ACCOMPANYING SOFTWARE, OR ITS DOCUMENTATION. LINKSYS DOES NOT OFFER REFUNDS FOR ANY PRODUCT.

LINKSYS OFFERS CROSS SHIPMENTS, A FASTER PROCESS FOR PROCESSING AND RECEIVING YOUR REPLACEMENT. LINKSYS PAYS FOR UPS GROUND ONLY. ALL CUSTOMERS LOCATED OUTSIDE OF THE UNITED STATES OF AMERICA AND CANADA SHALL BE HELD RESPONSIBLE FOR SHIPPING AND HANDLING CHARGES. PLEASE CALL LINKSYS FOR MORE DETAILS.

Appendix F: Contact Information

For help with the installation or operation of this product, contact Linksys Technical Support at one of the phone numbers or Internet addresses below.

Sales Information	800-546-5797 (LINKSYS)
Technical Support	800-326-7114
RMA Issues	949-261-1288
Fax	949-261-8868
Email	support@linksys.com
Web	http://www.linksys.com
FTP Site	ftp.linksys.com



<http://www.linksys.com>

© Copyright 2002 Linksys, All Rights Reserved.