

Figure 1: Top Cover Removed

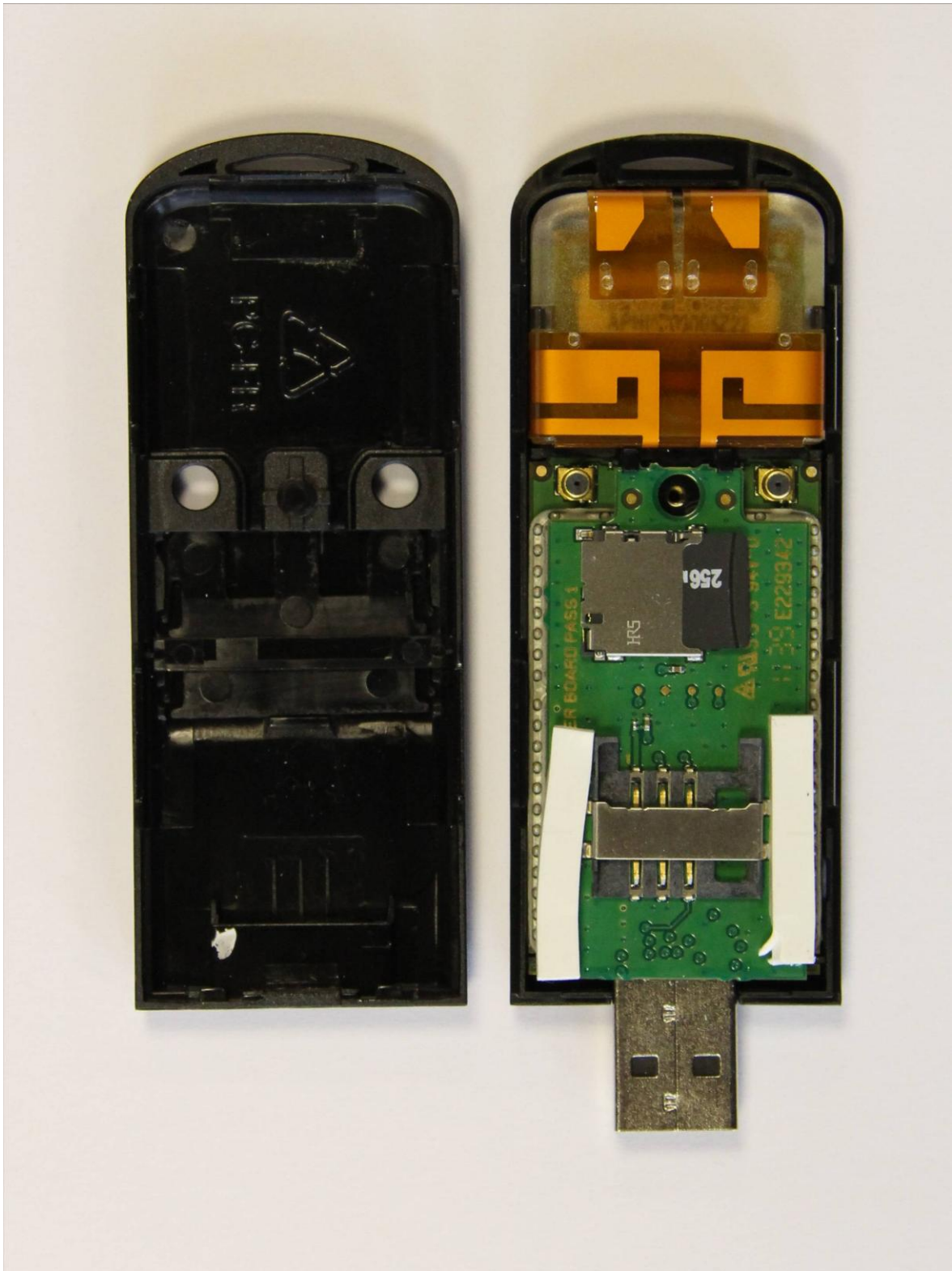


Figure 2: Bottom Cover Removed

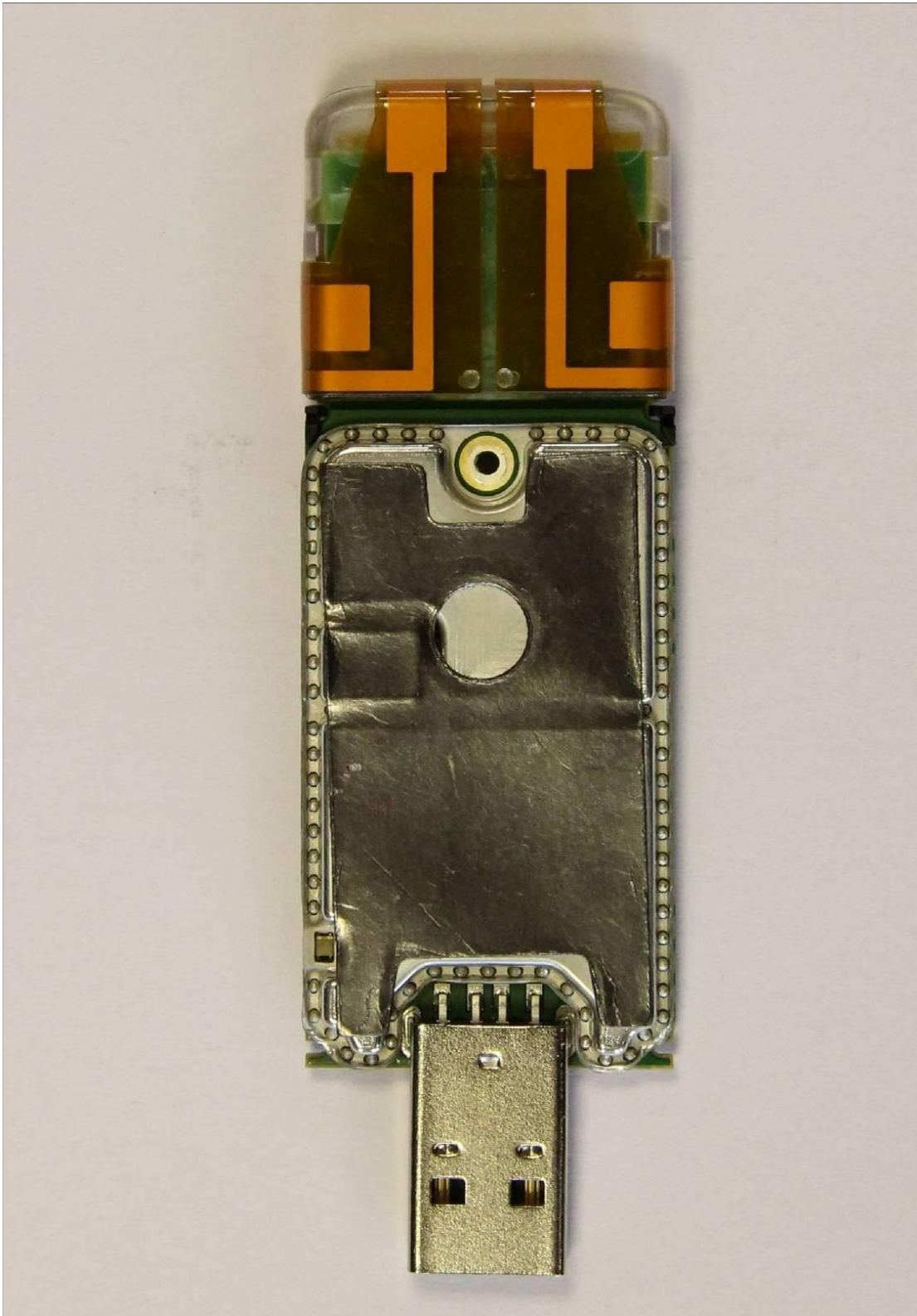


Figure 3: Top of Main Board with Shield and Antenna



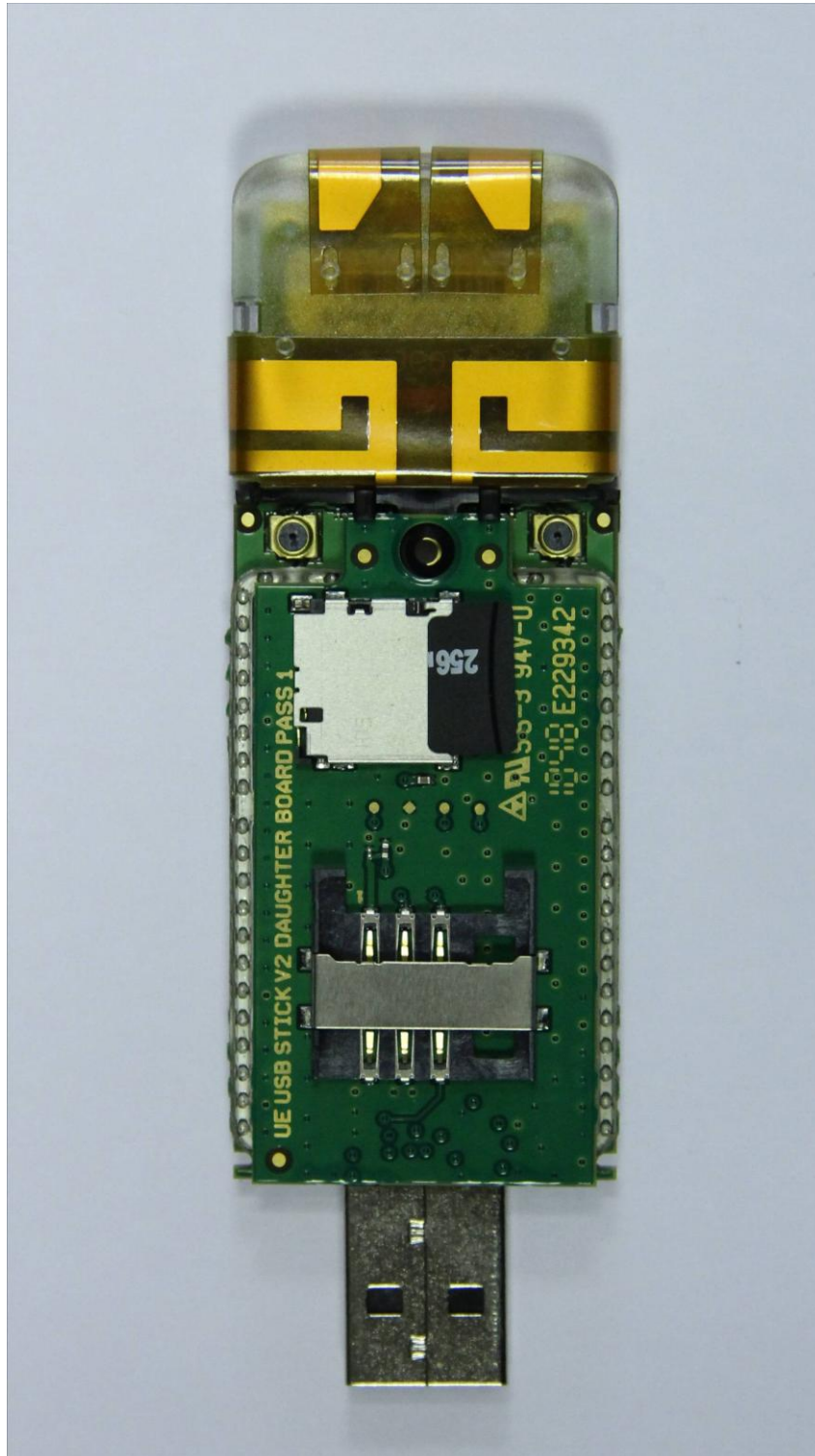


Figure 4: Bottom of Main Board with Daughter card Fitted

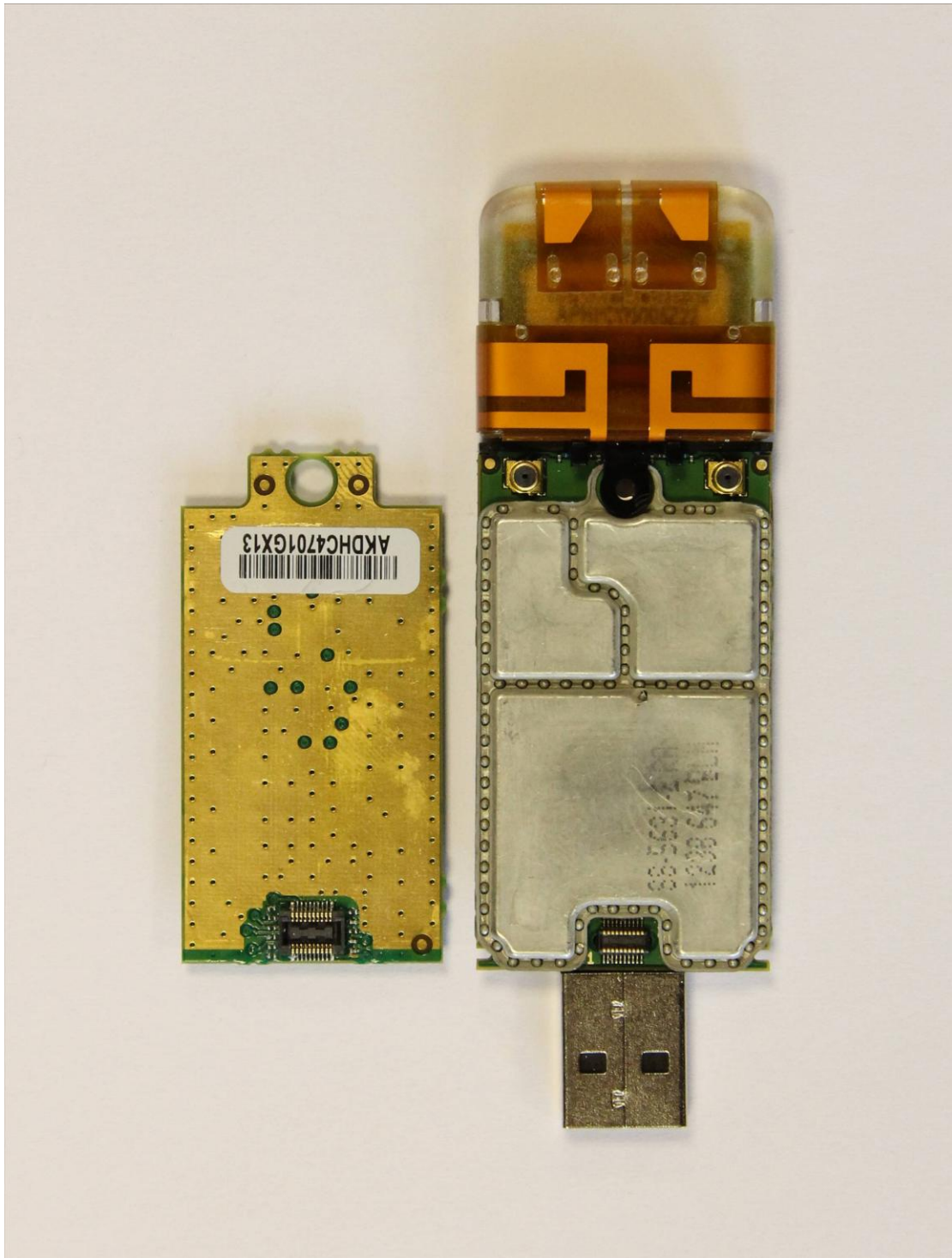


Figure 5: Bottom of Main Board with Daughter card Removed

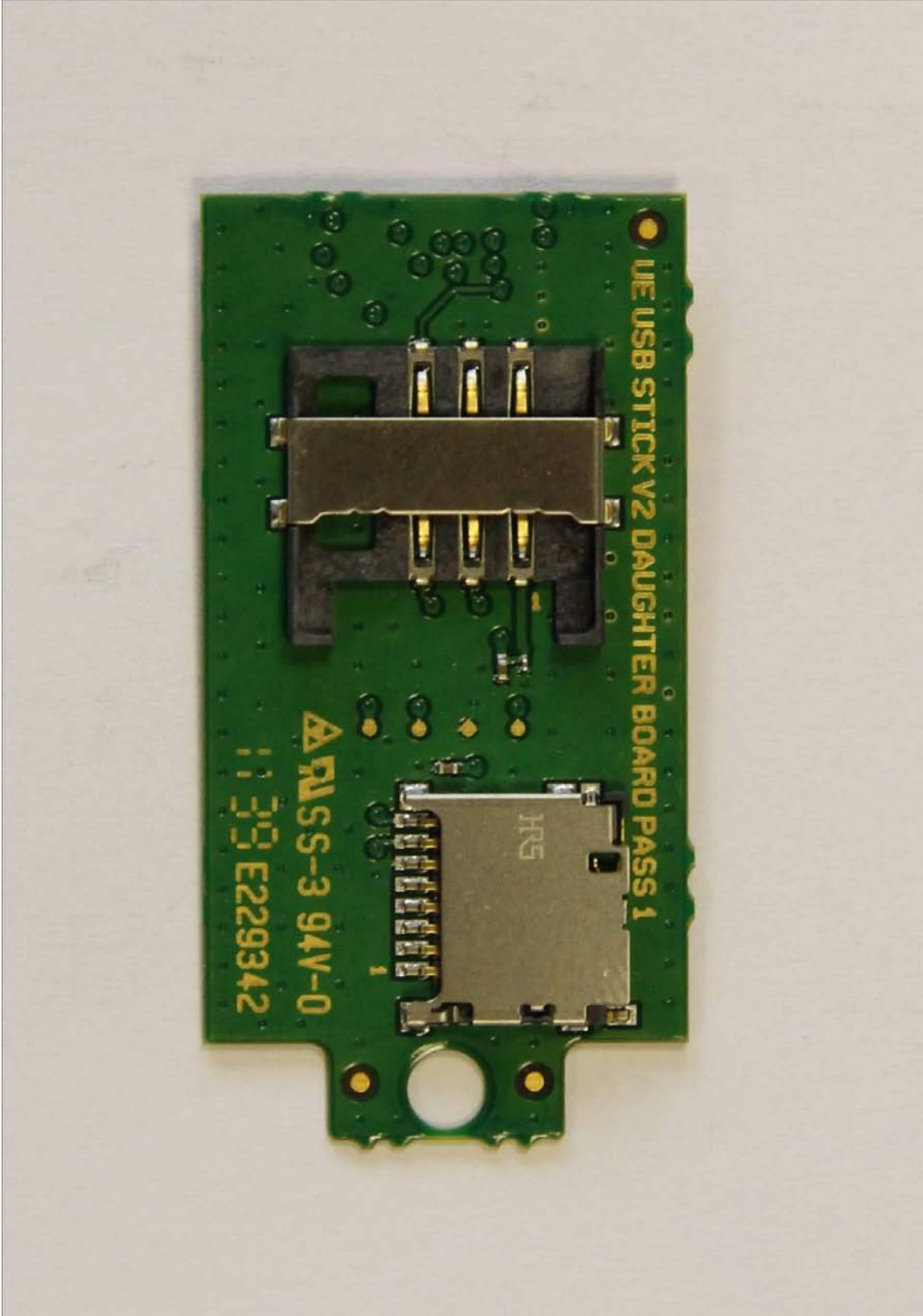


Figure 6: Top of Daughter Card (SD Card Removed)





Figure 7: Bottom of Daughter Card

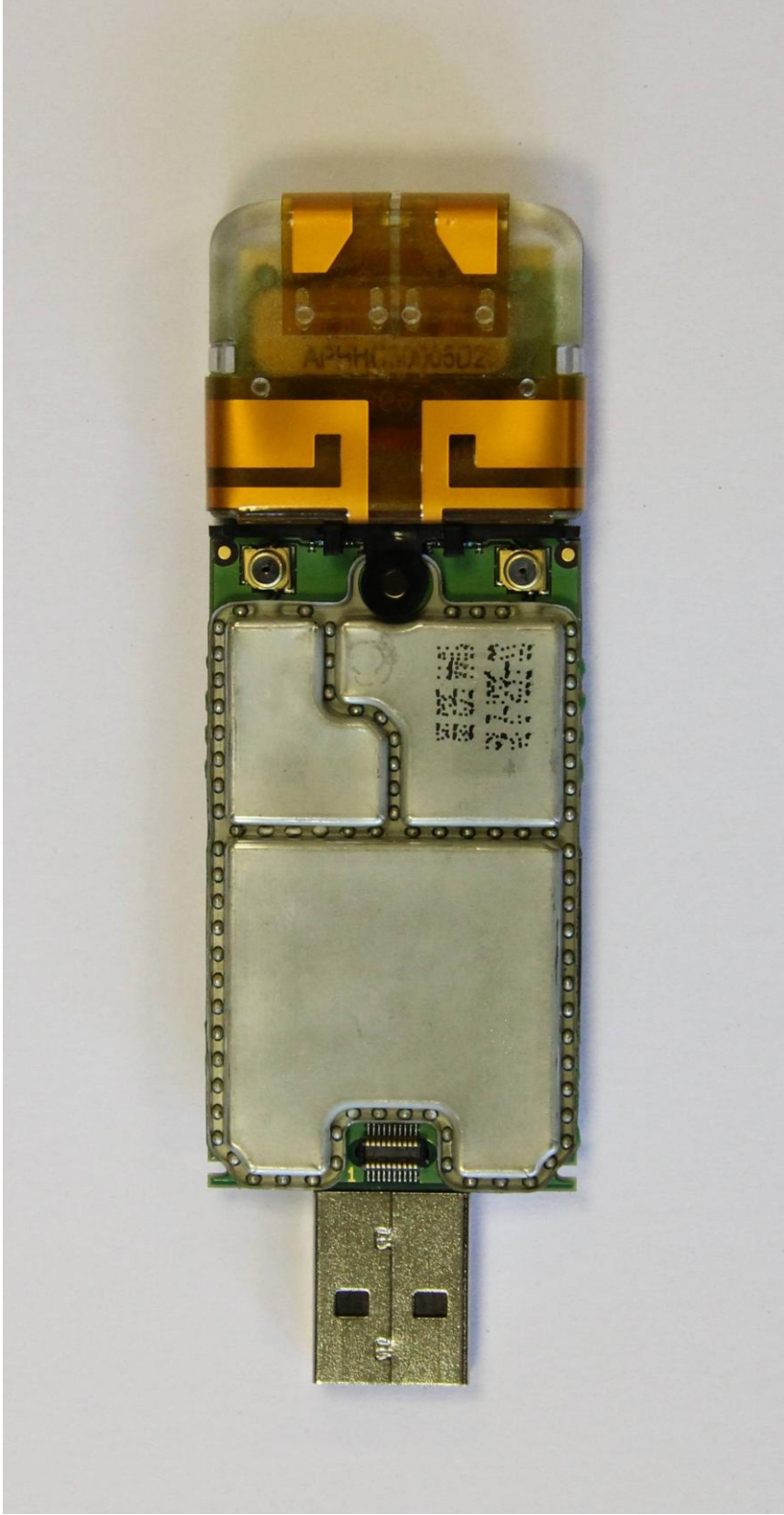


Figure 8: Bottom of Main Board with Shield and Antenna



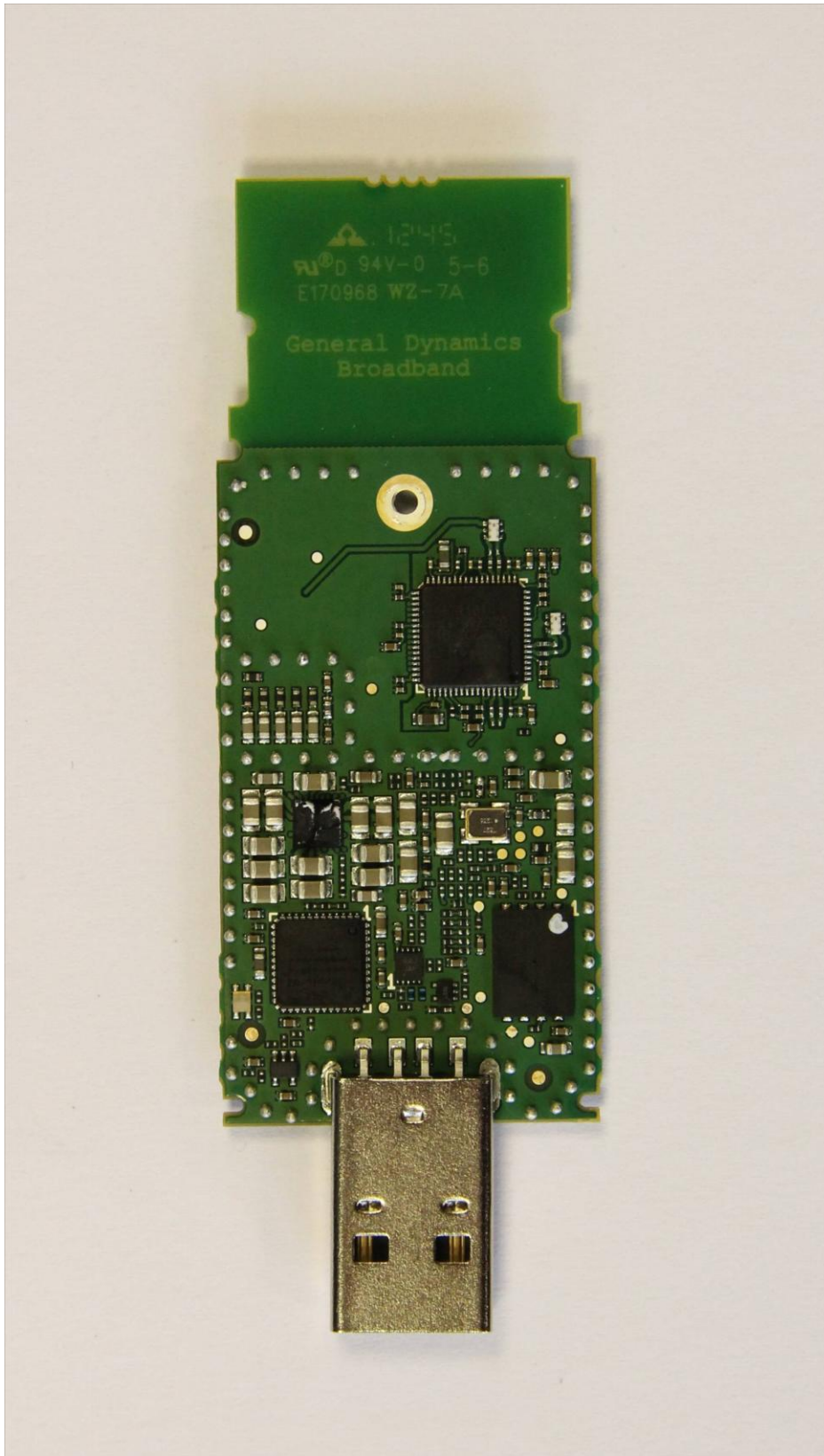


Figure 9: Top of Main Board with Shield and Antenna Removed

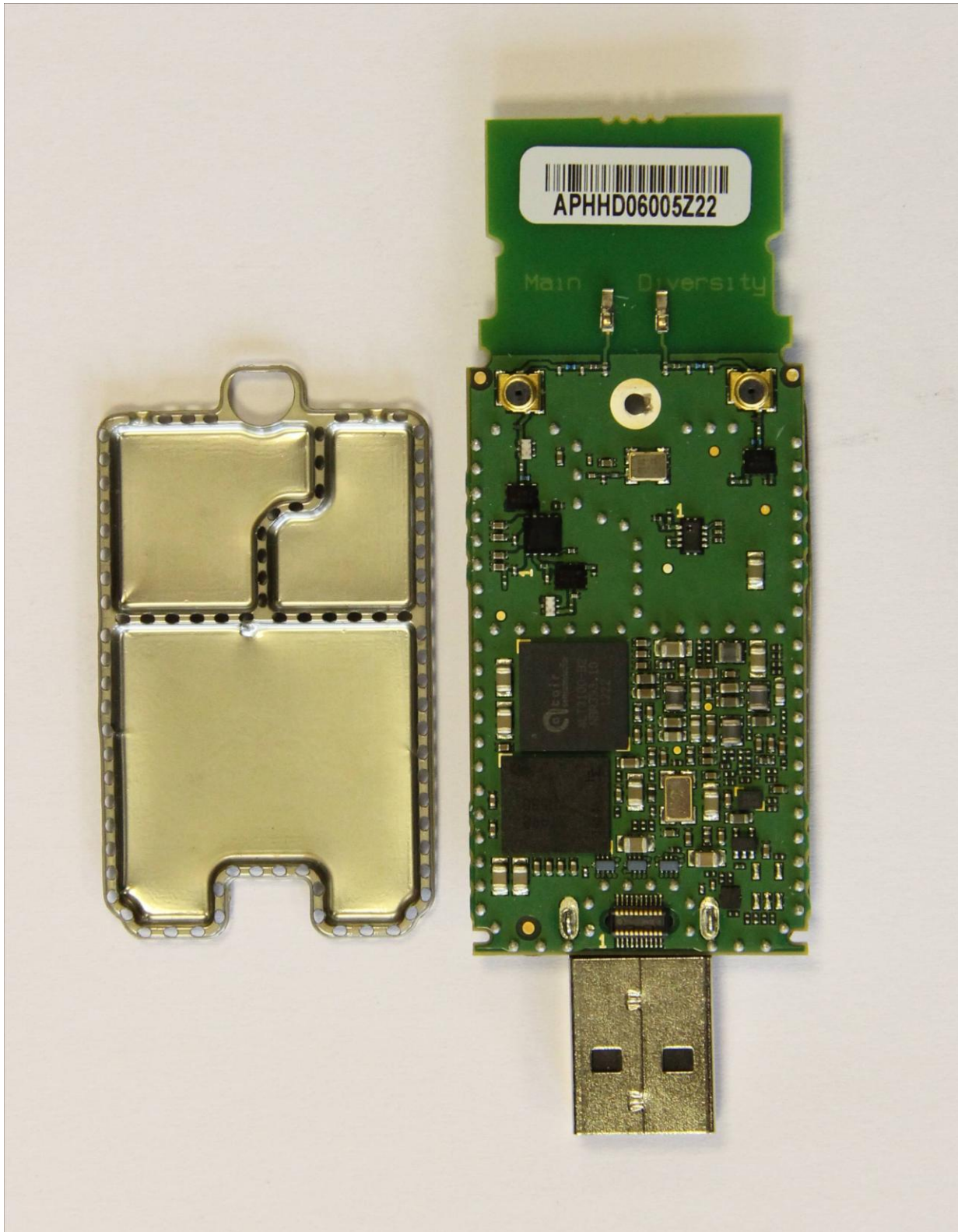


Figure 10: Bottom of Main Board with Shield Removed