



**Figure 1: Radome Removed**



Figure 2: Antenna Removed



**Figure 3: Rear of Antenna Assembly**

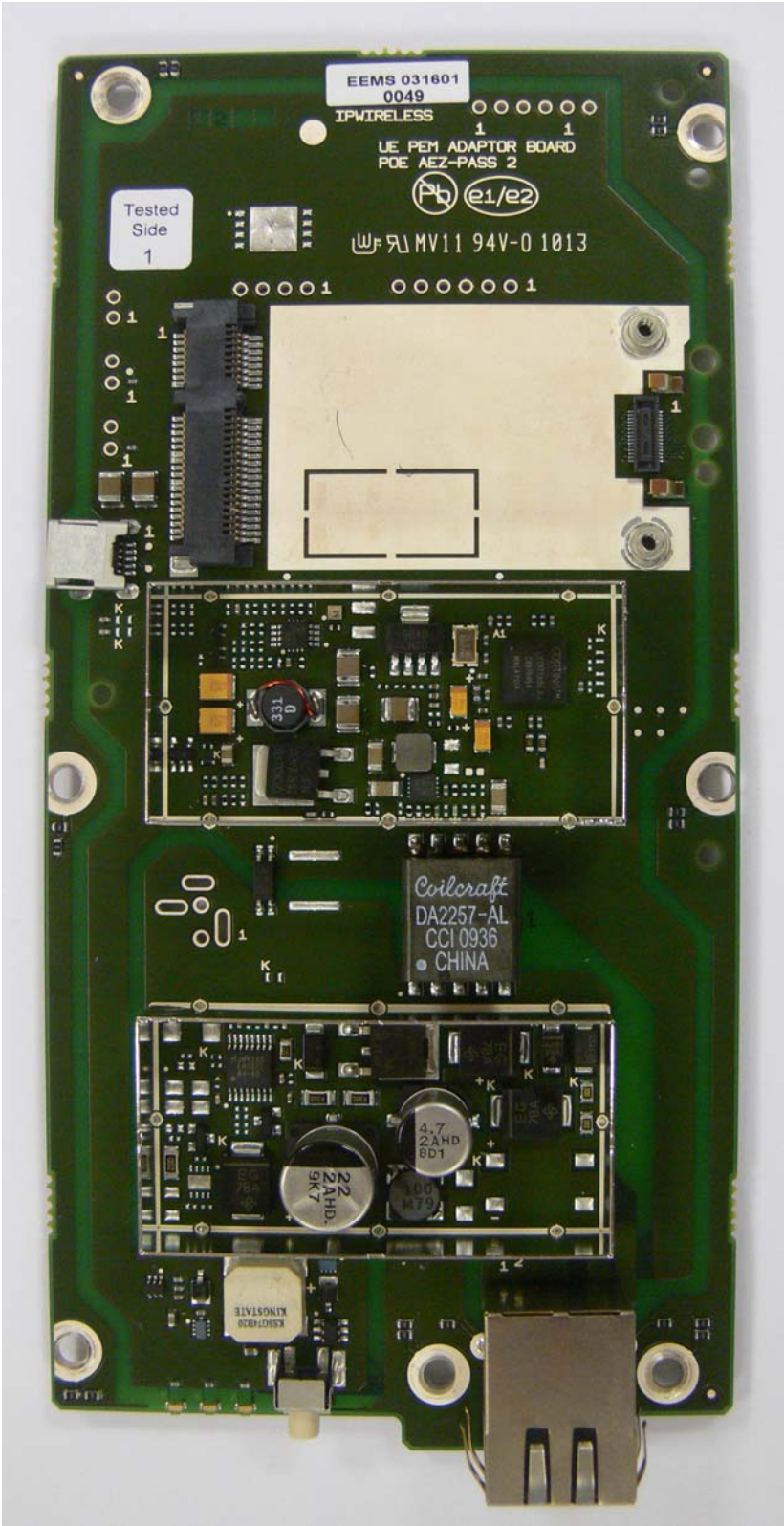


Figure 4: PoE Adapter Board with PEM (no Lids)

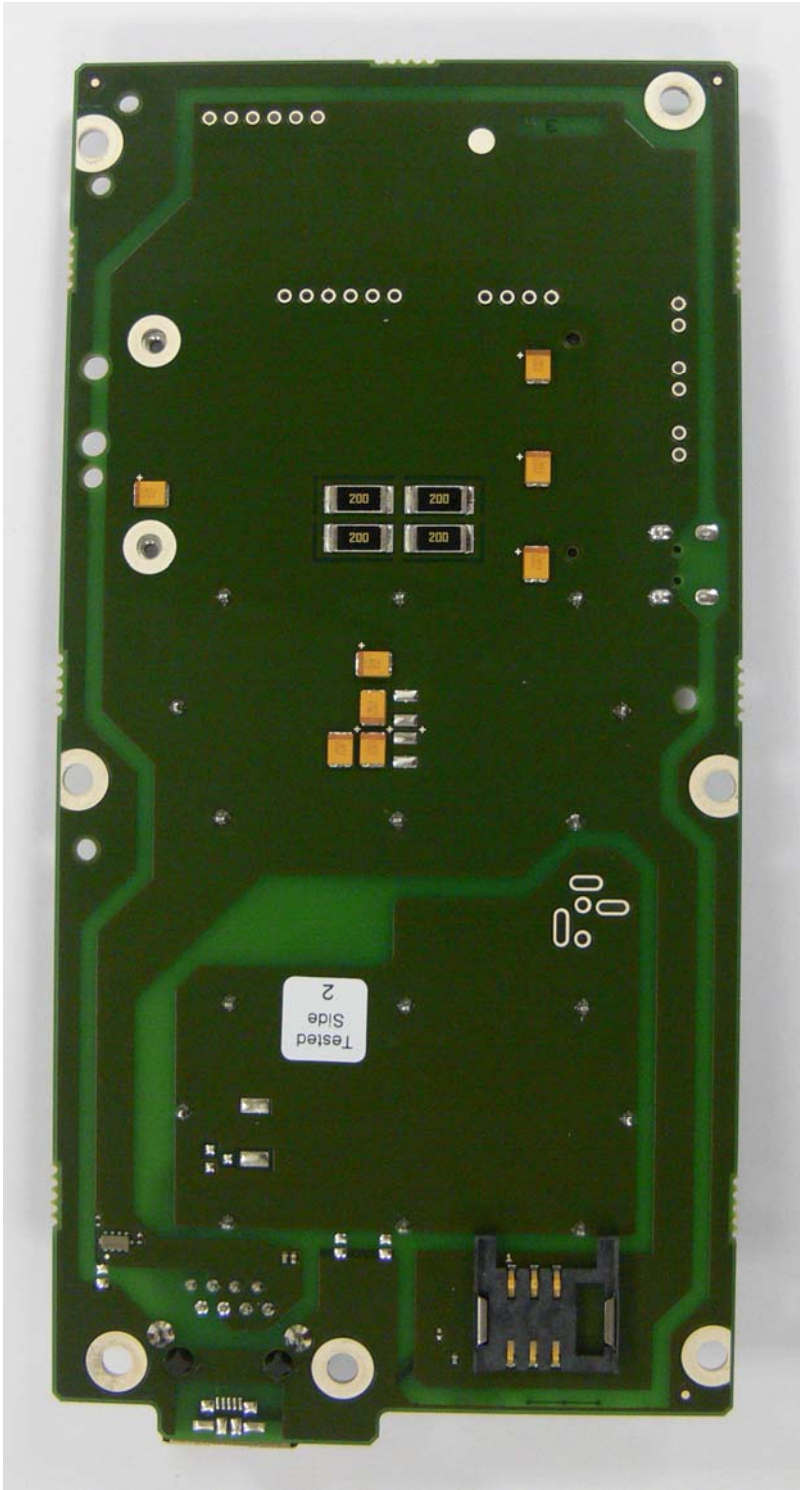


Figure 5: PoE Adapter Board – rear

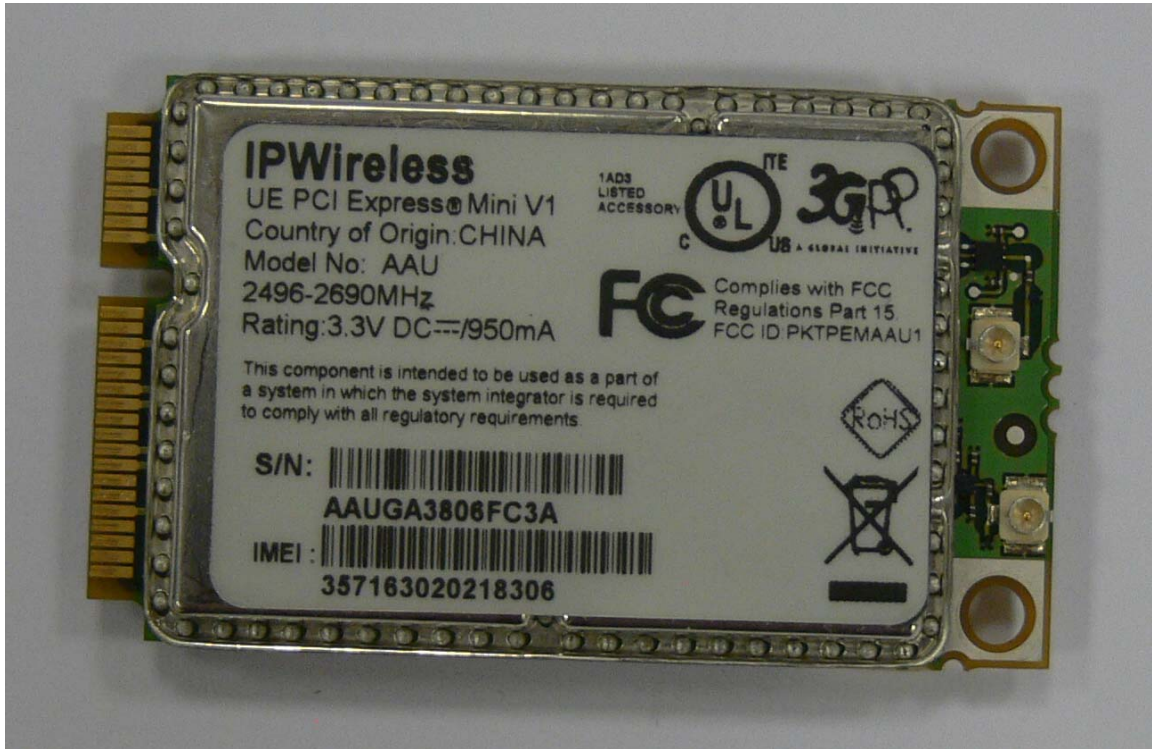


Figure 6: 2.5GHz PEM FCC ID: PKTPEMAAU1

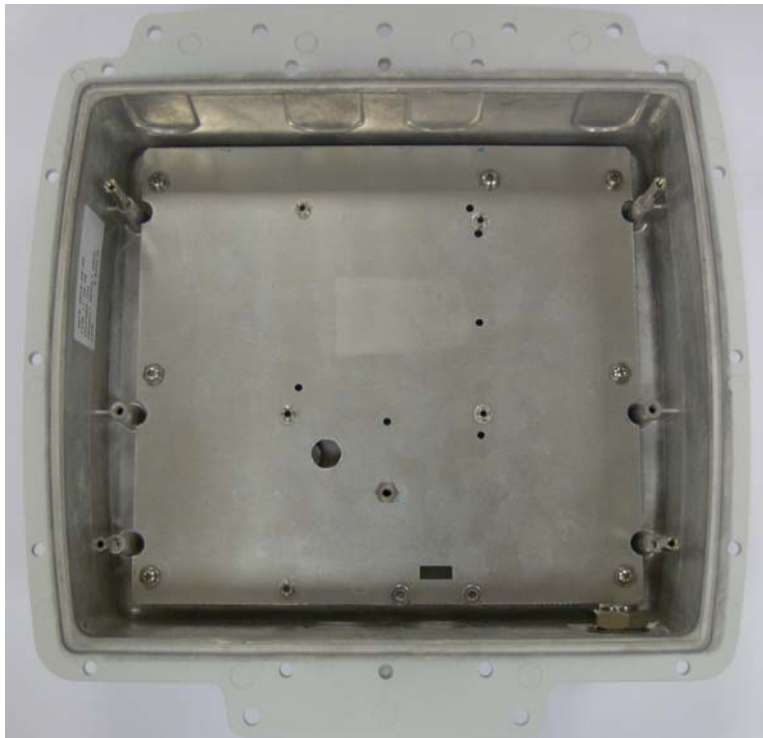


Figure 7: Chassis



Figure 1: PEM Top Shielding Removed

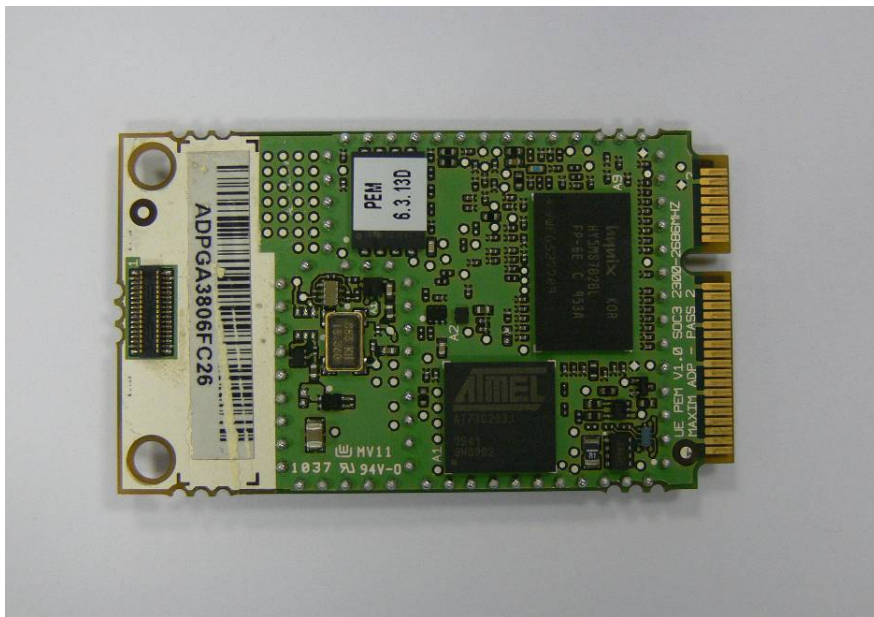


Figure 2: PEM Bottom Shielding Removed