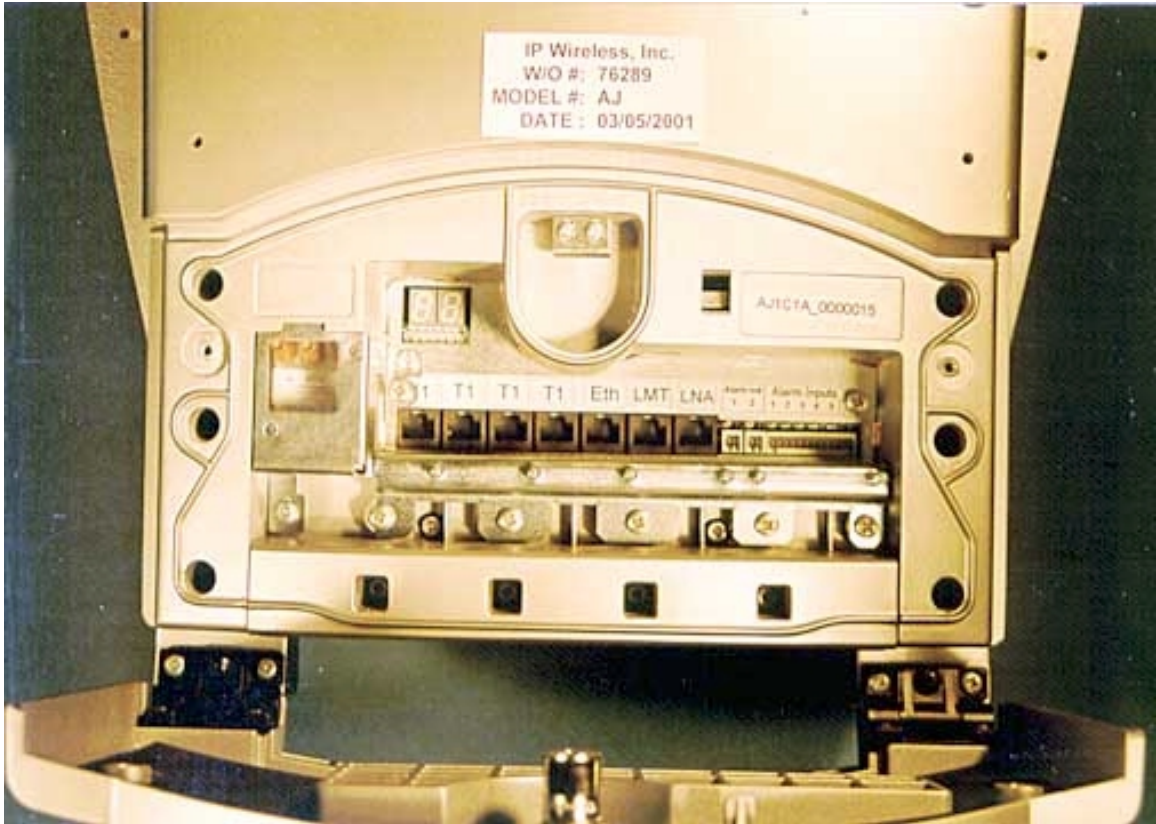
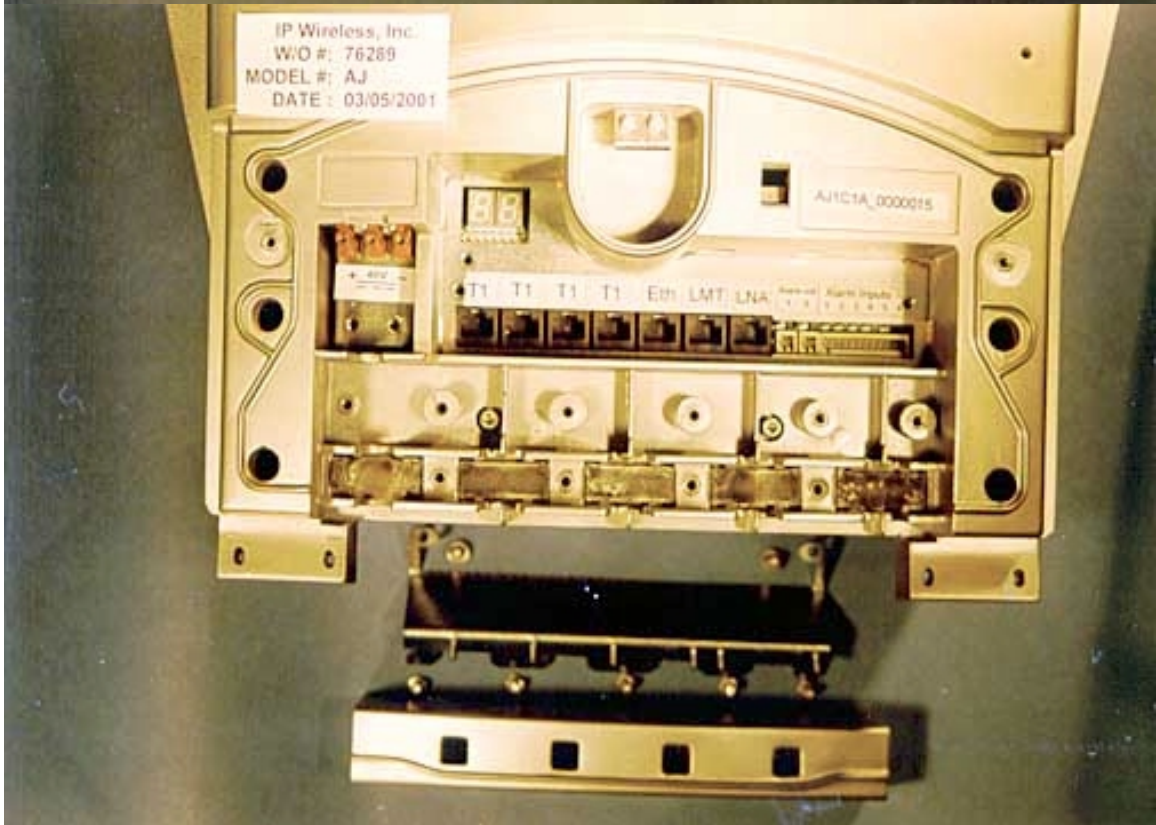
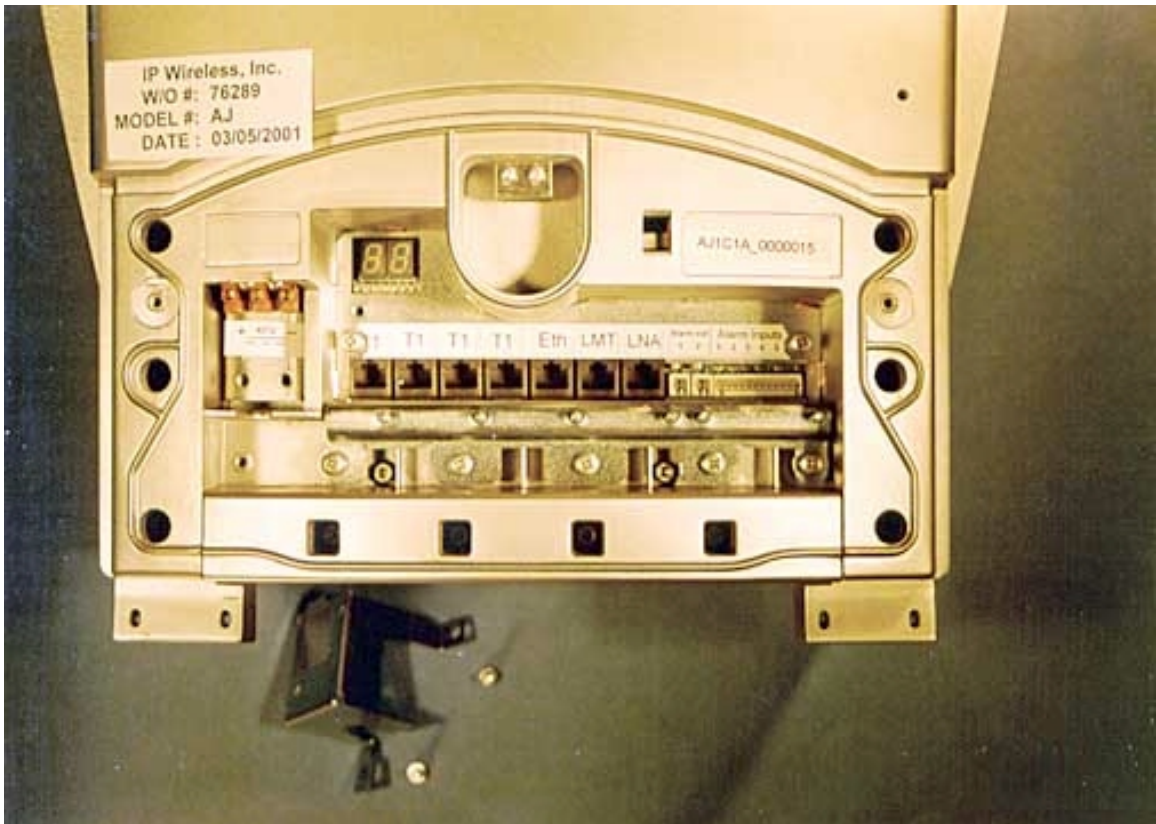
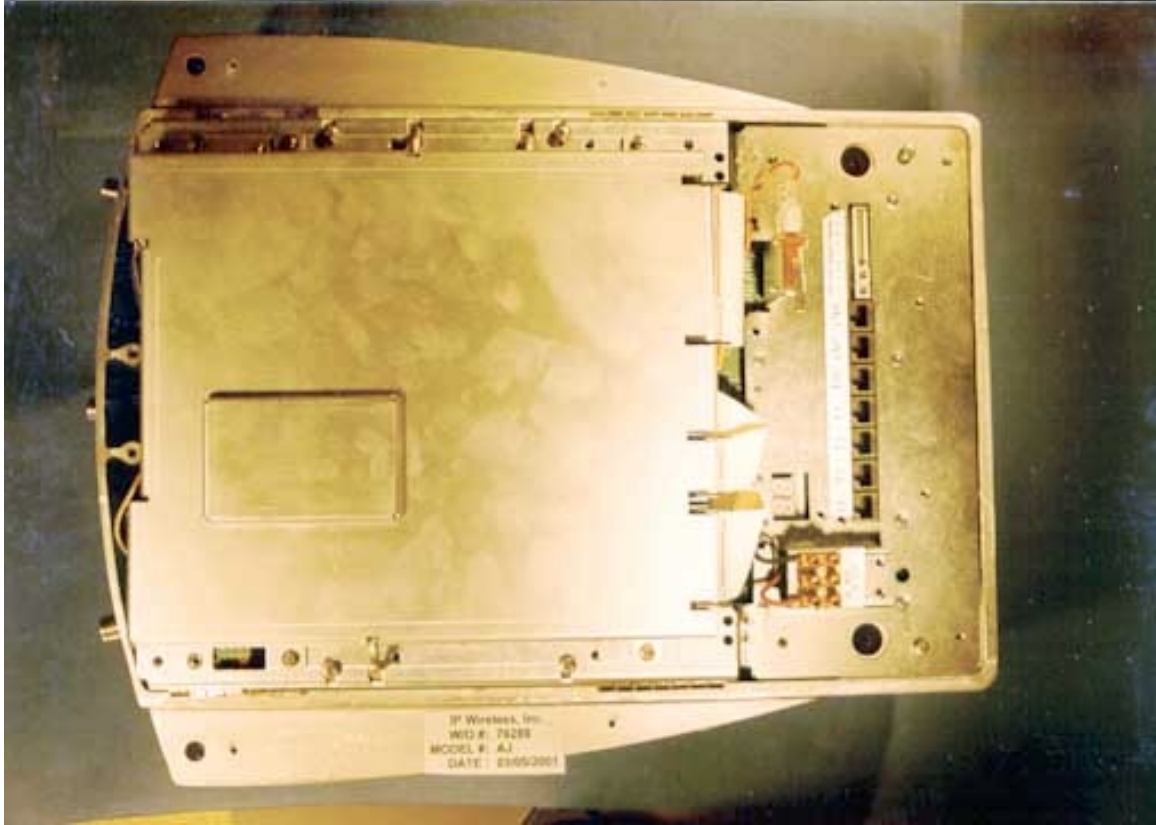
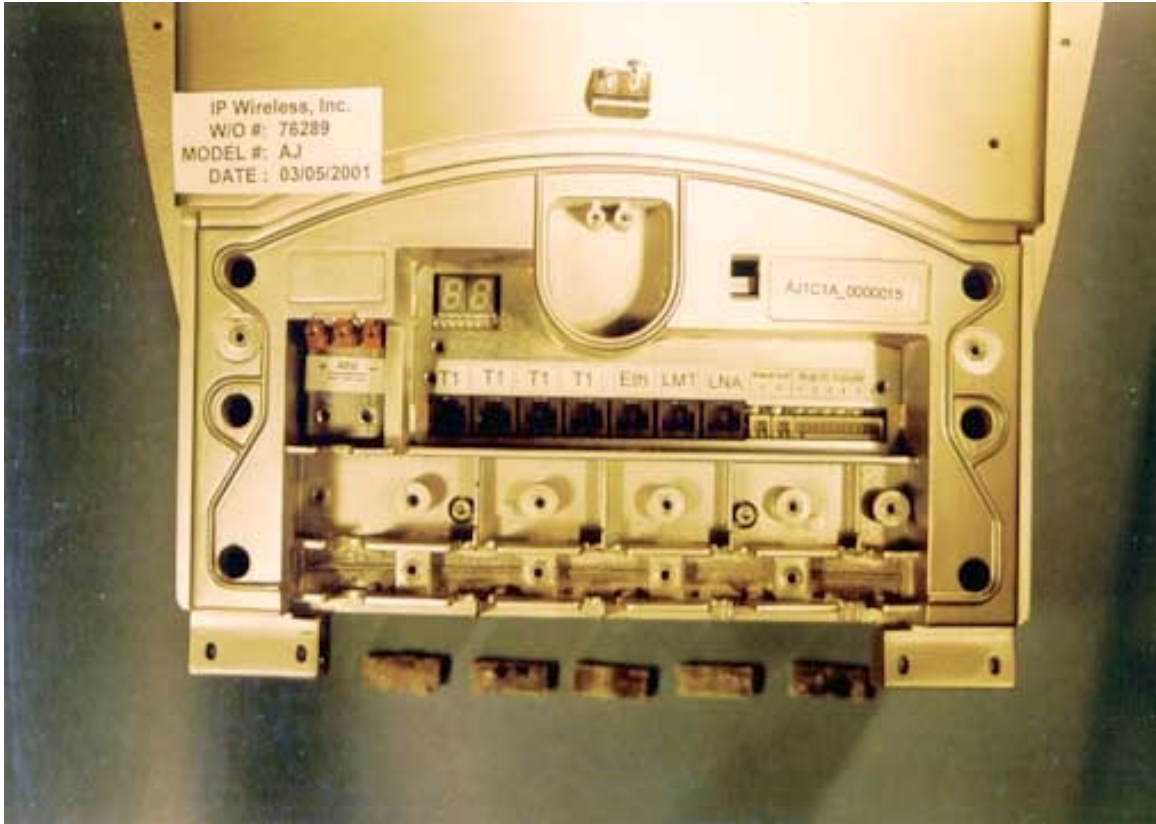
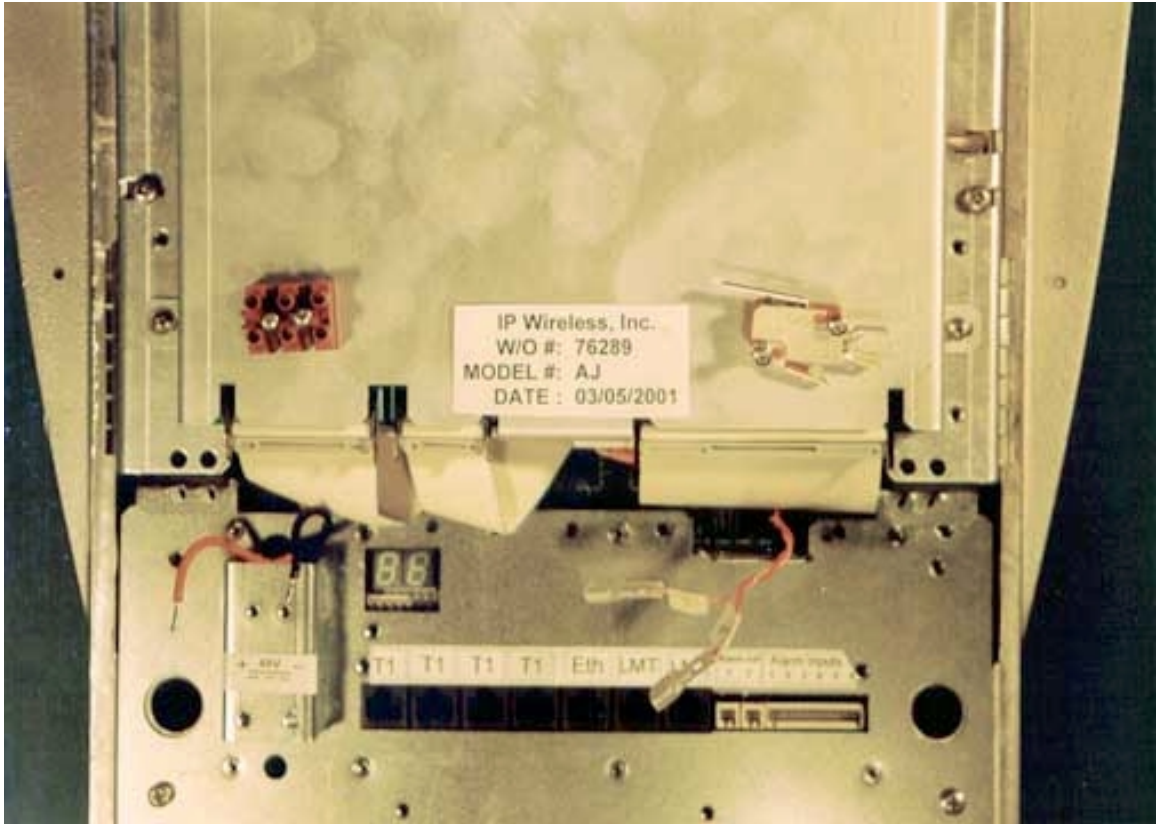


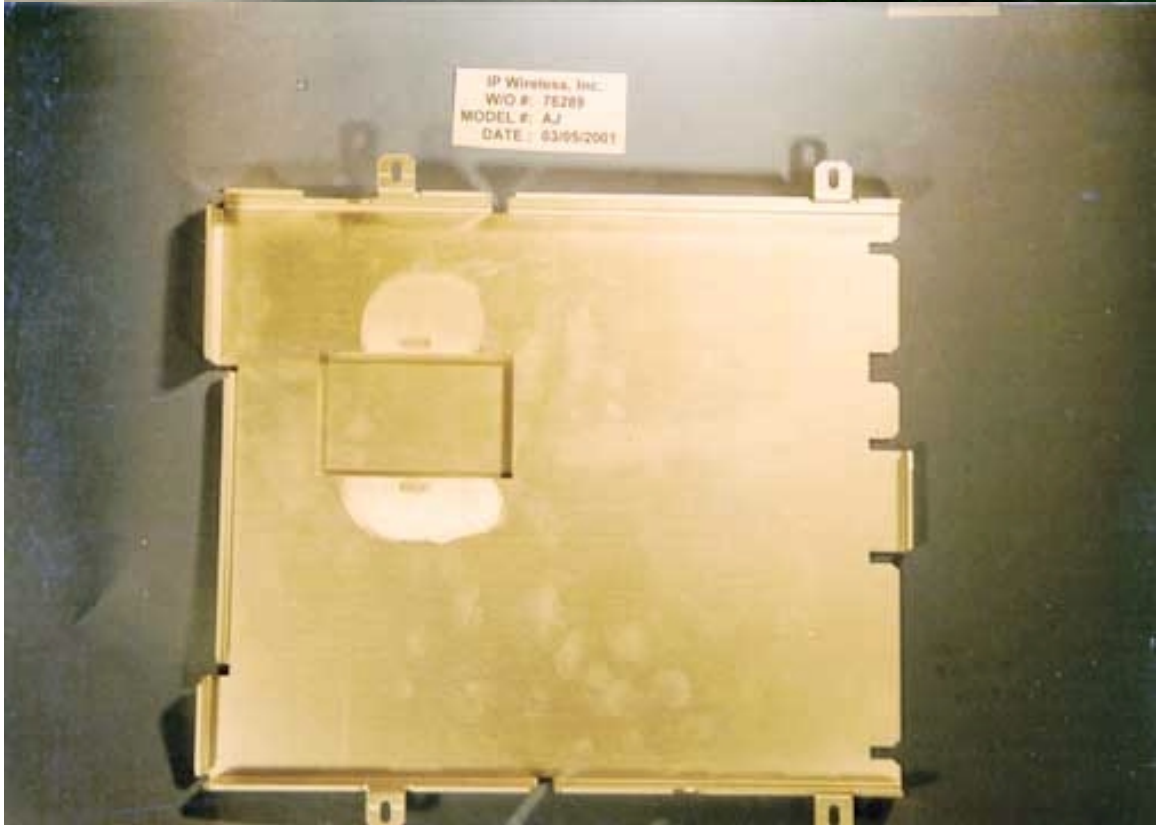
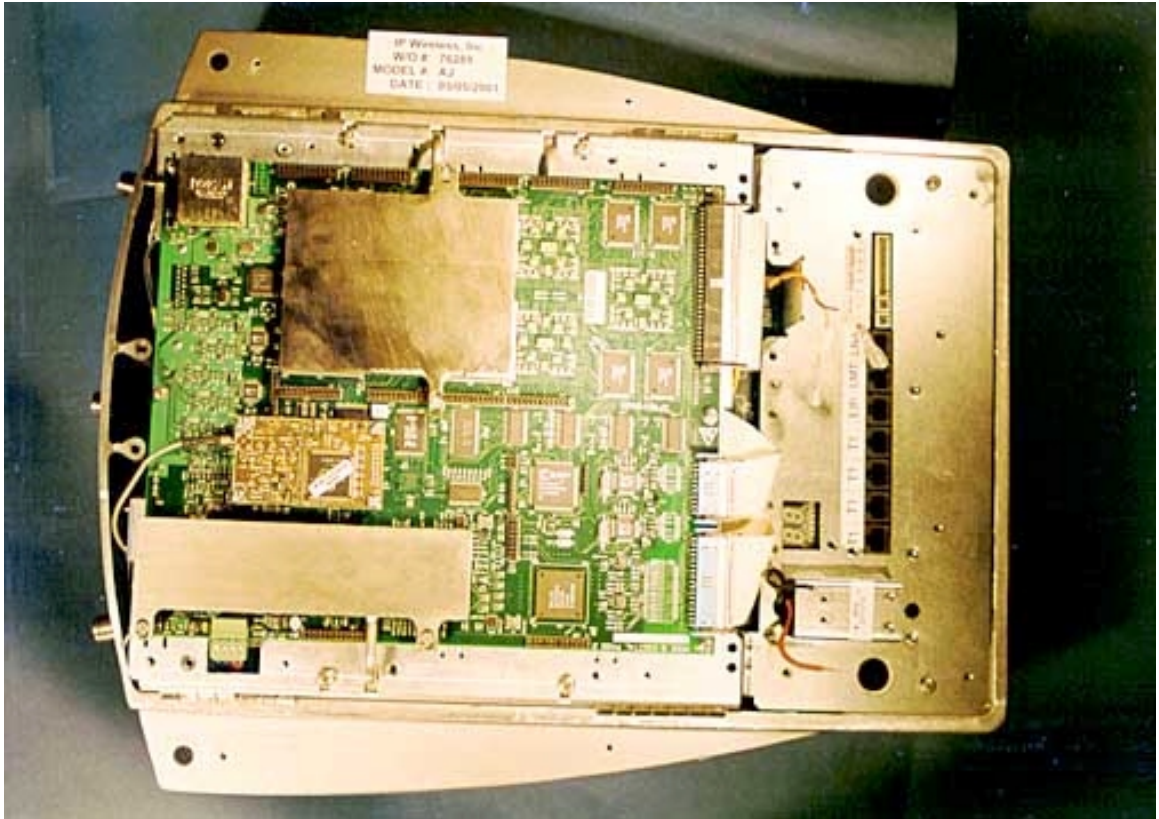
IP Wireless, Inc.
MO #: T6289
MODEL #: AJ
DATE: 02/05/2001

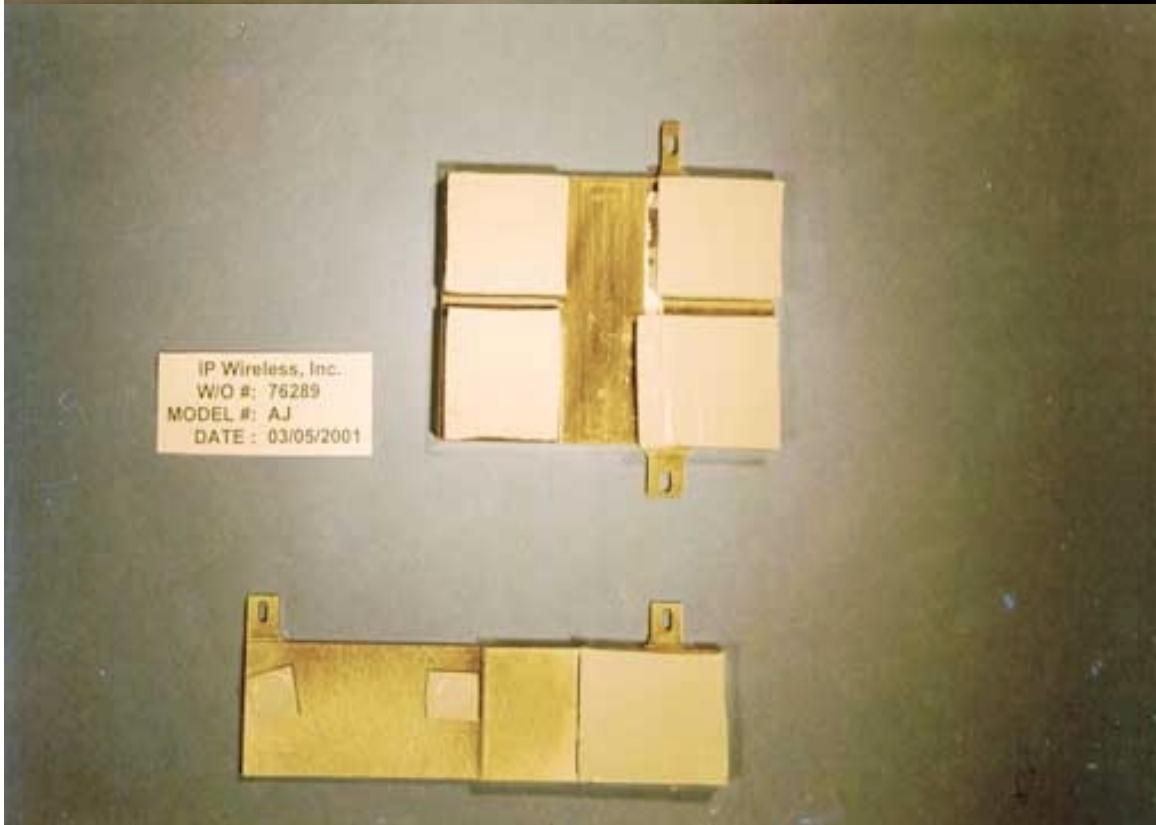
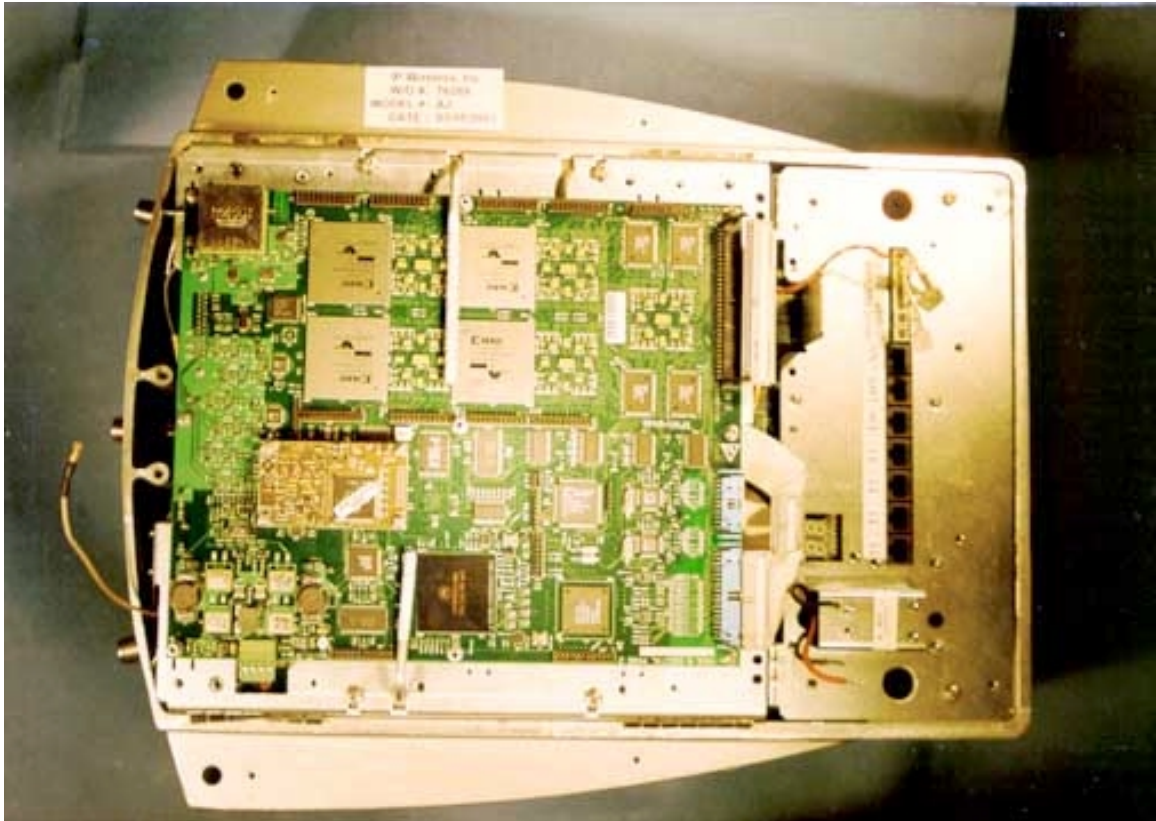


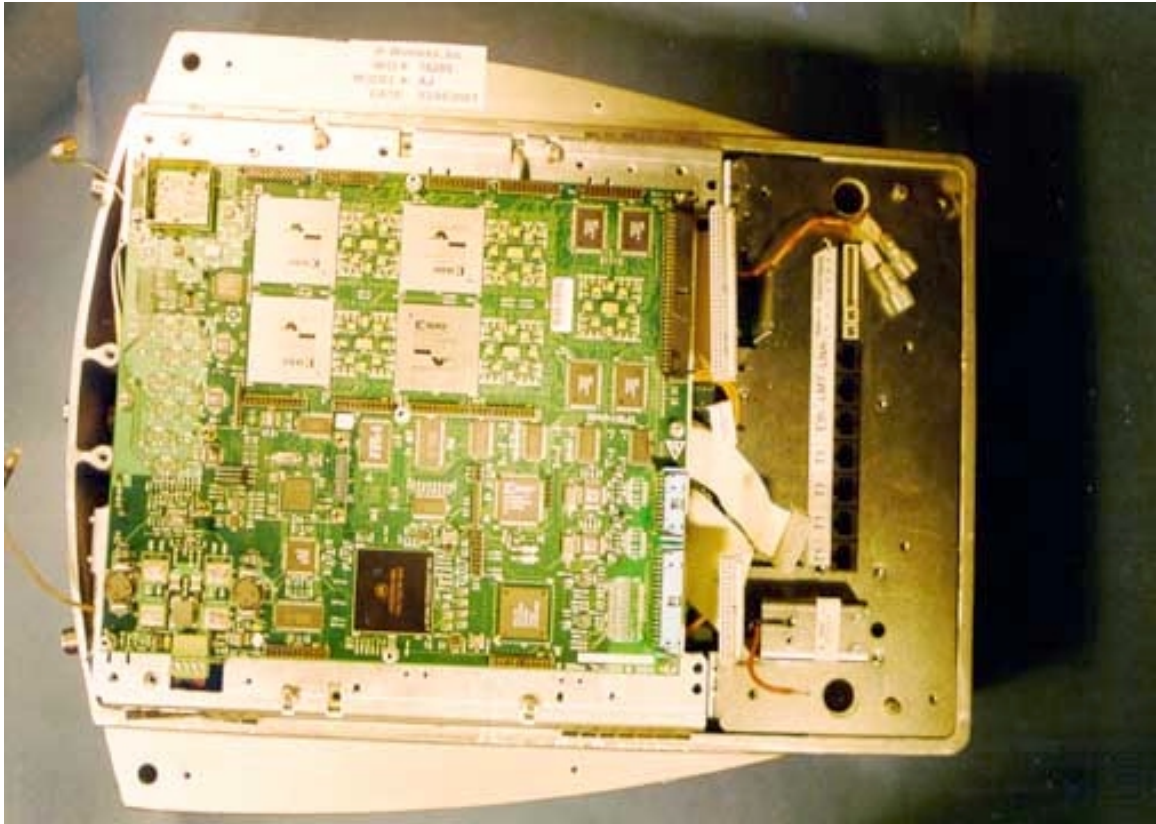












IP Wireless, Inc.
W/O #: 76289
MODEL #: AJ
DATE : 03/05/2001



IP Wireless, Inc.
W/O #: 76289
MODEL #: AJ
DATE : 03/05/2001

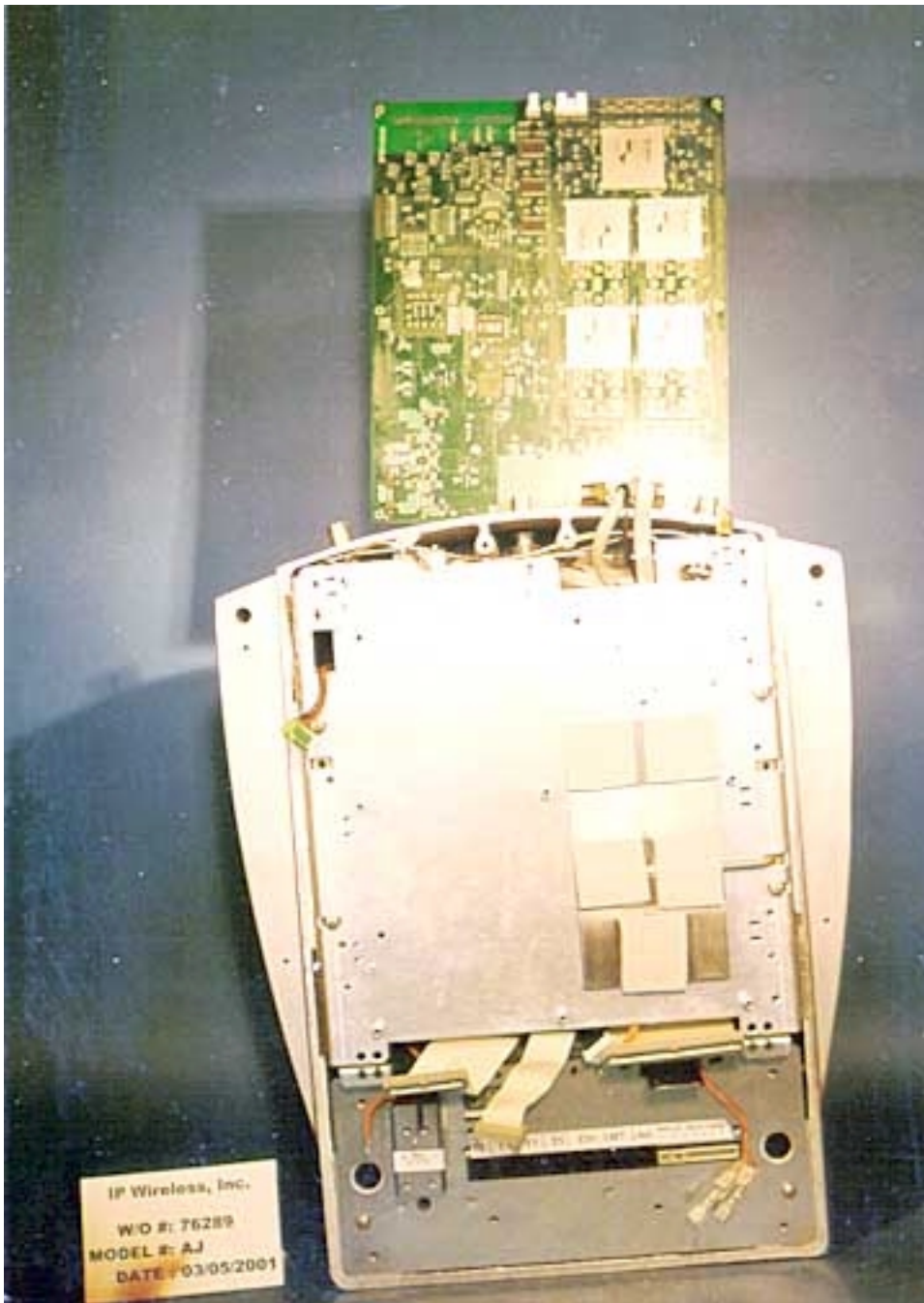


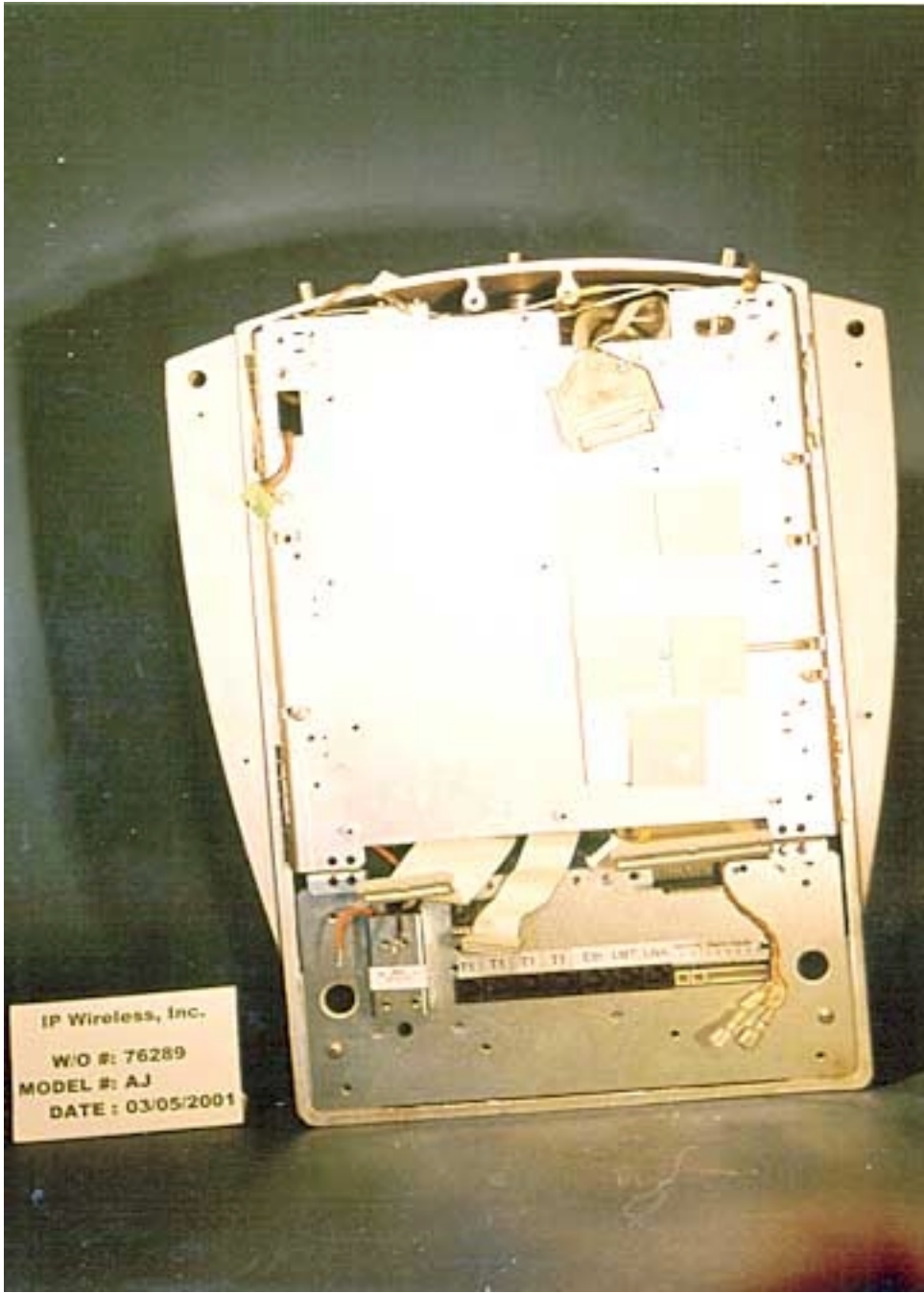
IP Wireless, Inc.
W/O #: 76289
MODEL #: AJ
DATE : 03/05/2001



IP Wireless, Inc.
W/O #: 76289
MODEL #: AJ
DATE : 03/05/2001

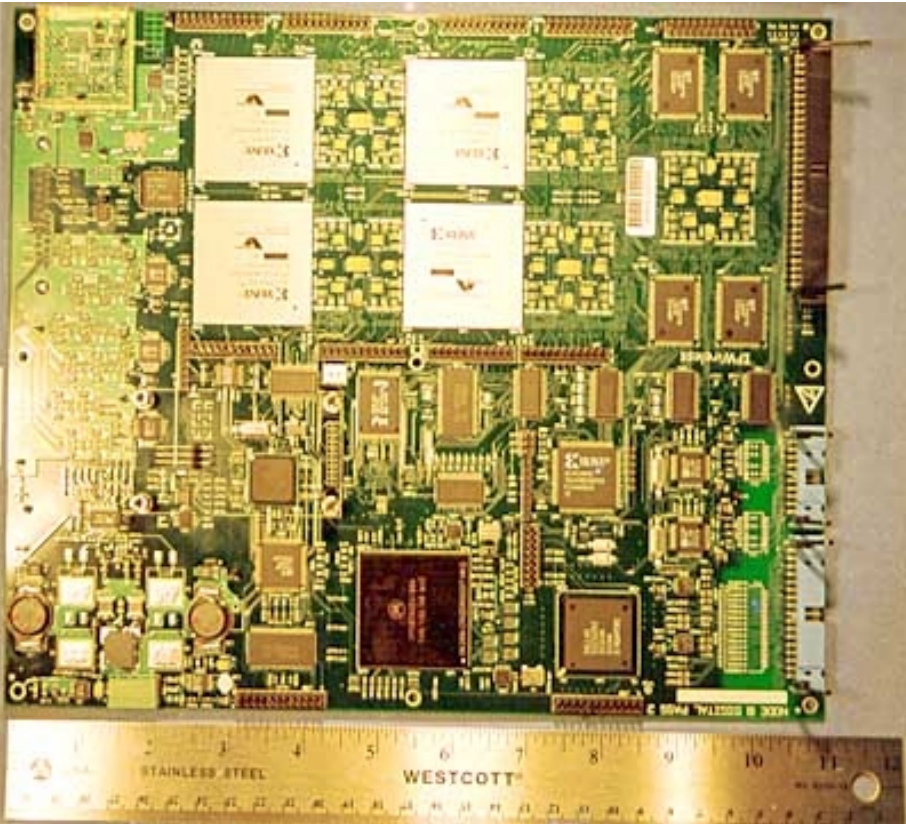




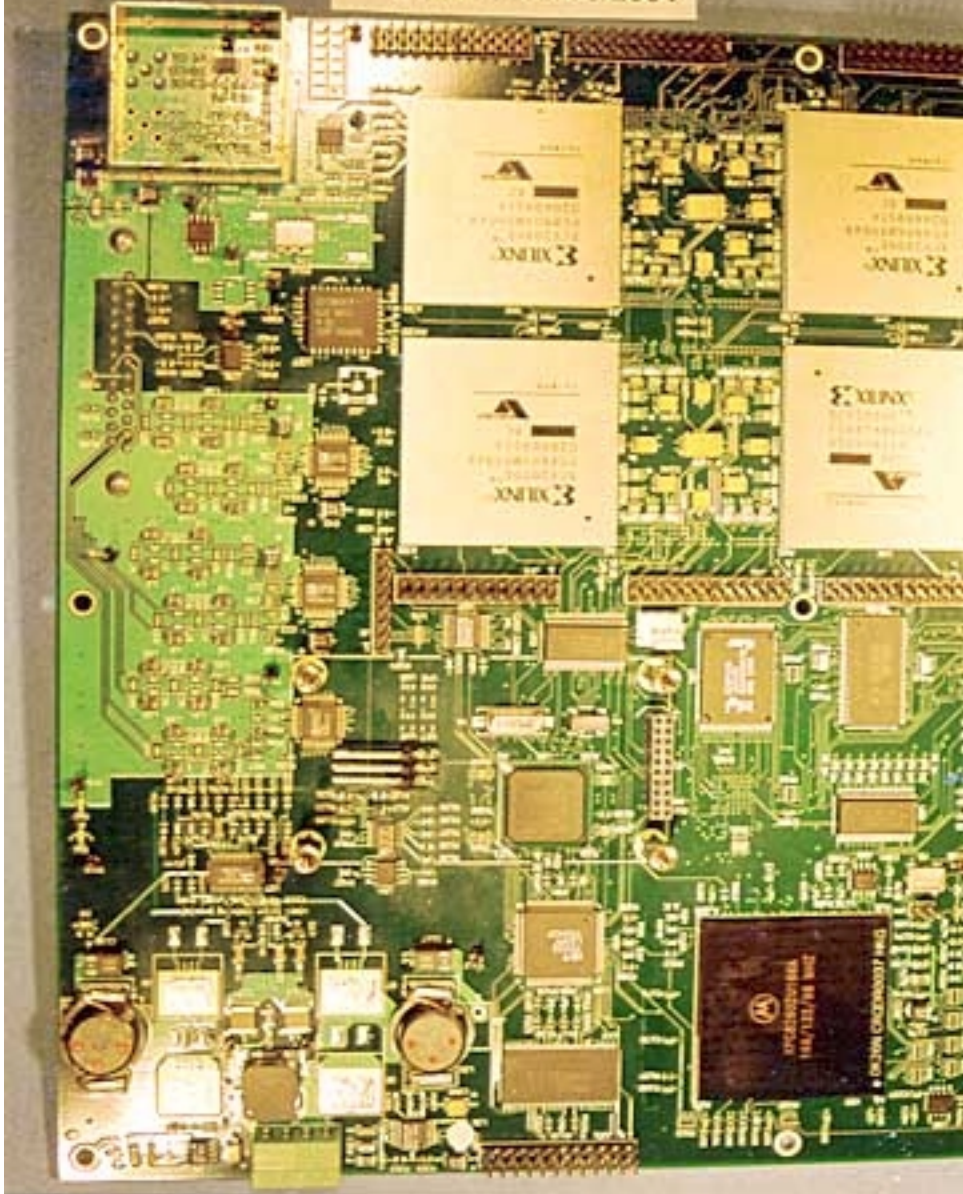


IP Wireless, Inc.
W/O #: 76289
MODEL #: AJ
DATE : 03/05/2001

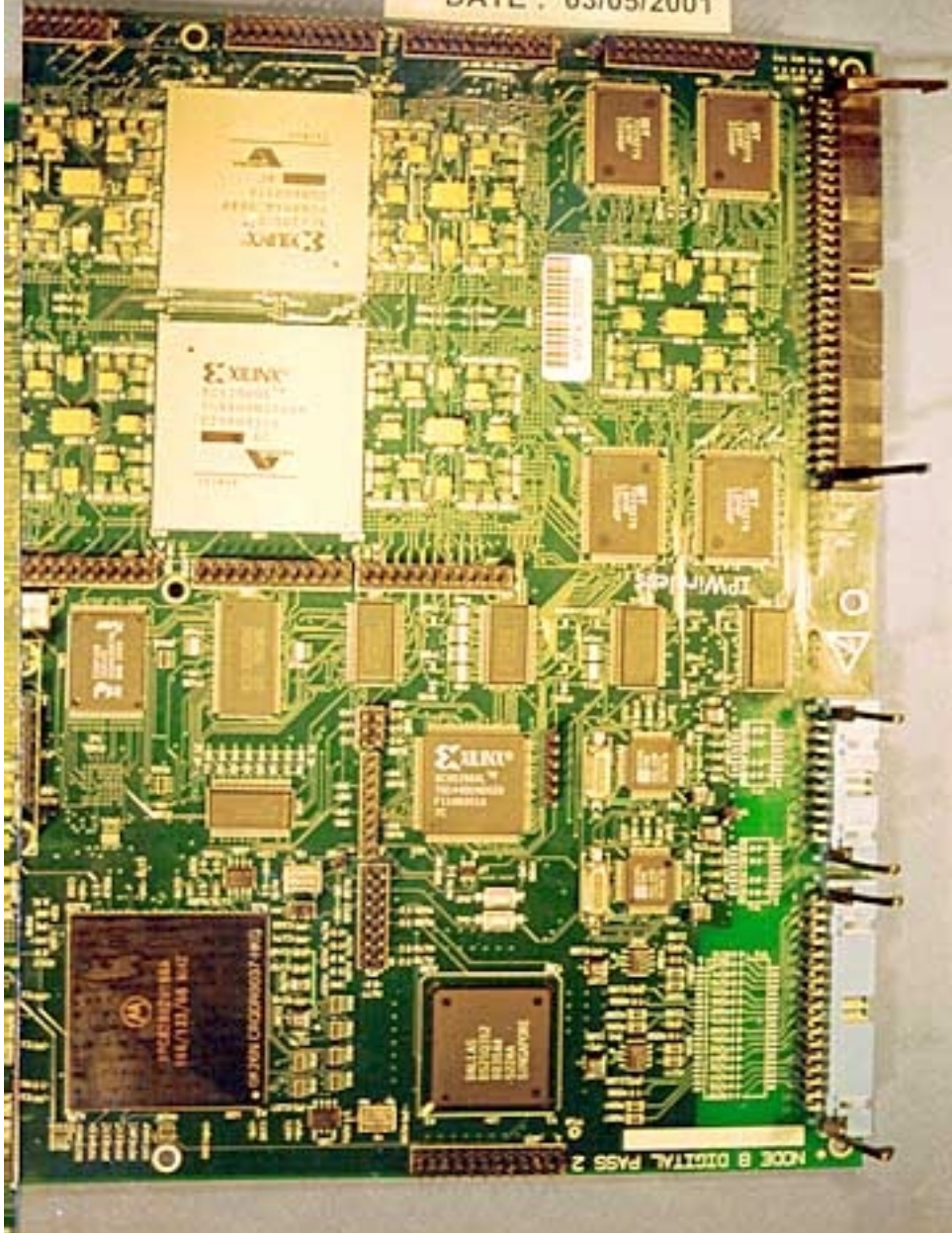
IP Wireless, Inc.
W/O #: 76289
MODEL #: AJ
DATE: 03/05/2001



IP Wireless, Inc.
W/O #: 76289
MODEL #: AJ
DATE : 03/05/2001

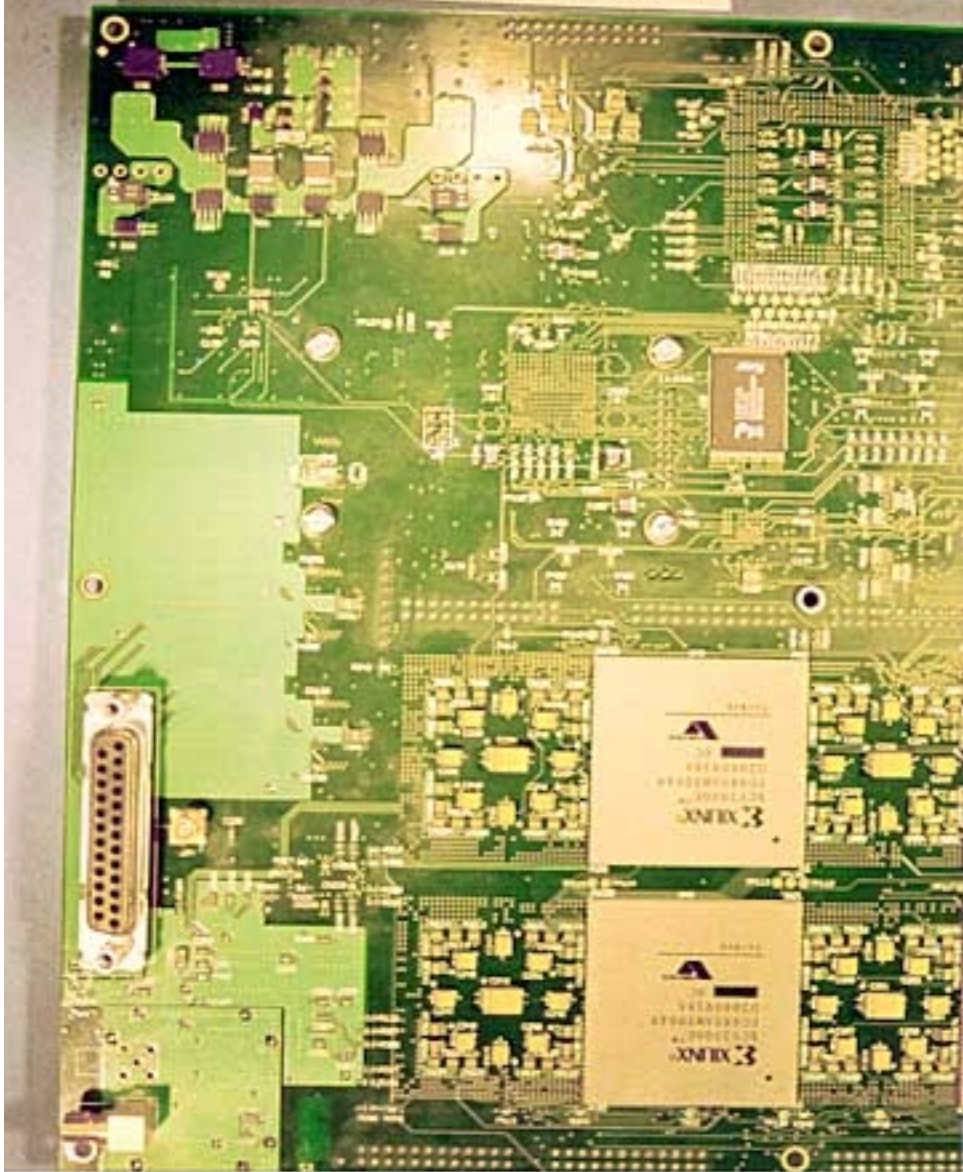


W/O #: 76289
MODEL #: AJ
DATE : 03/05/2001

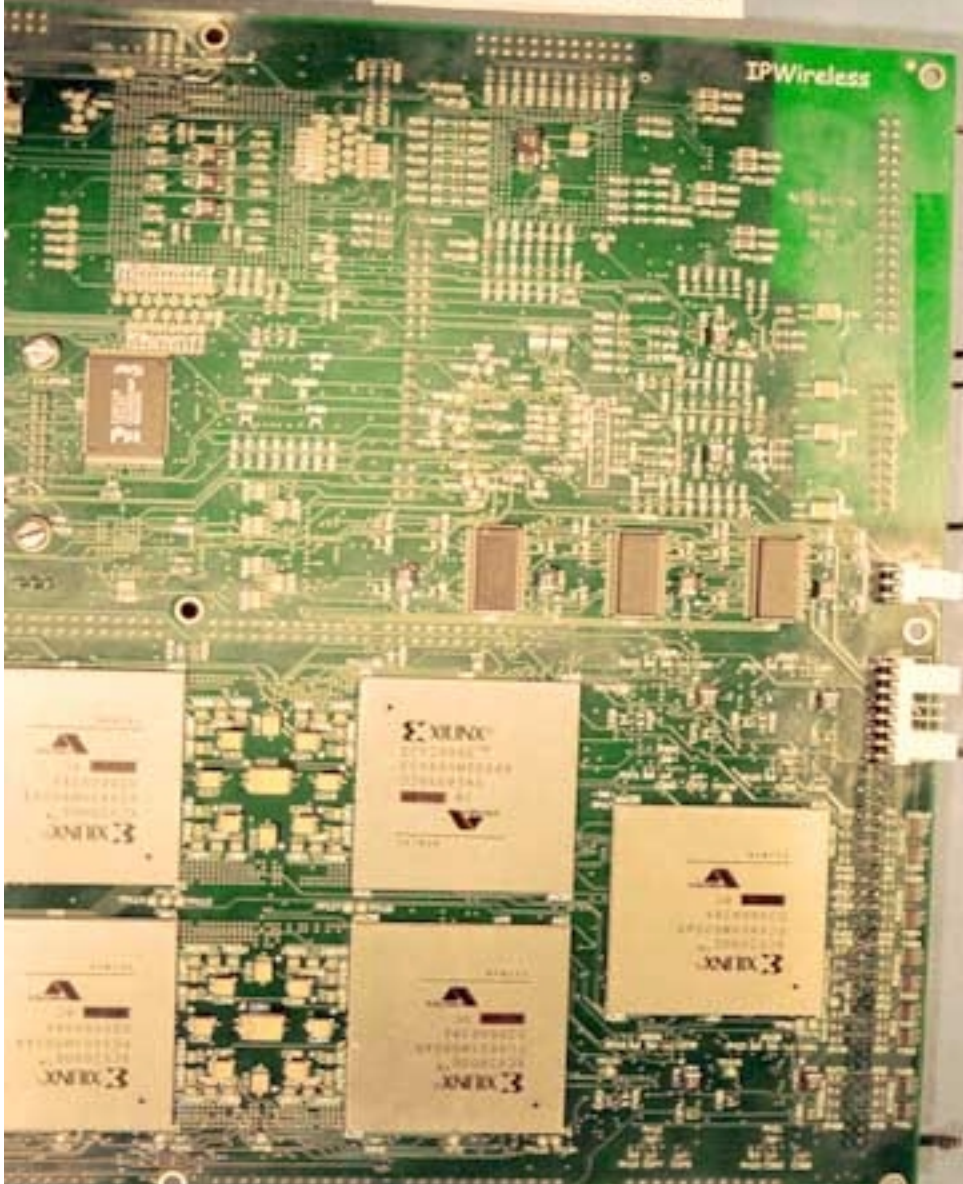


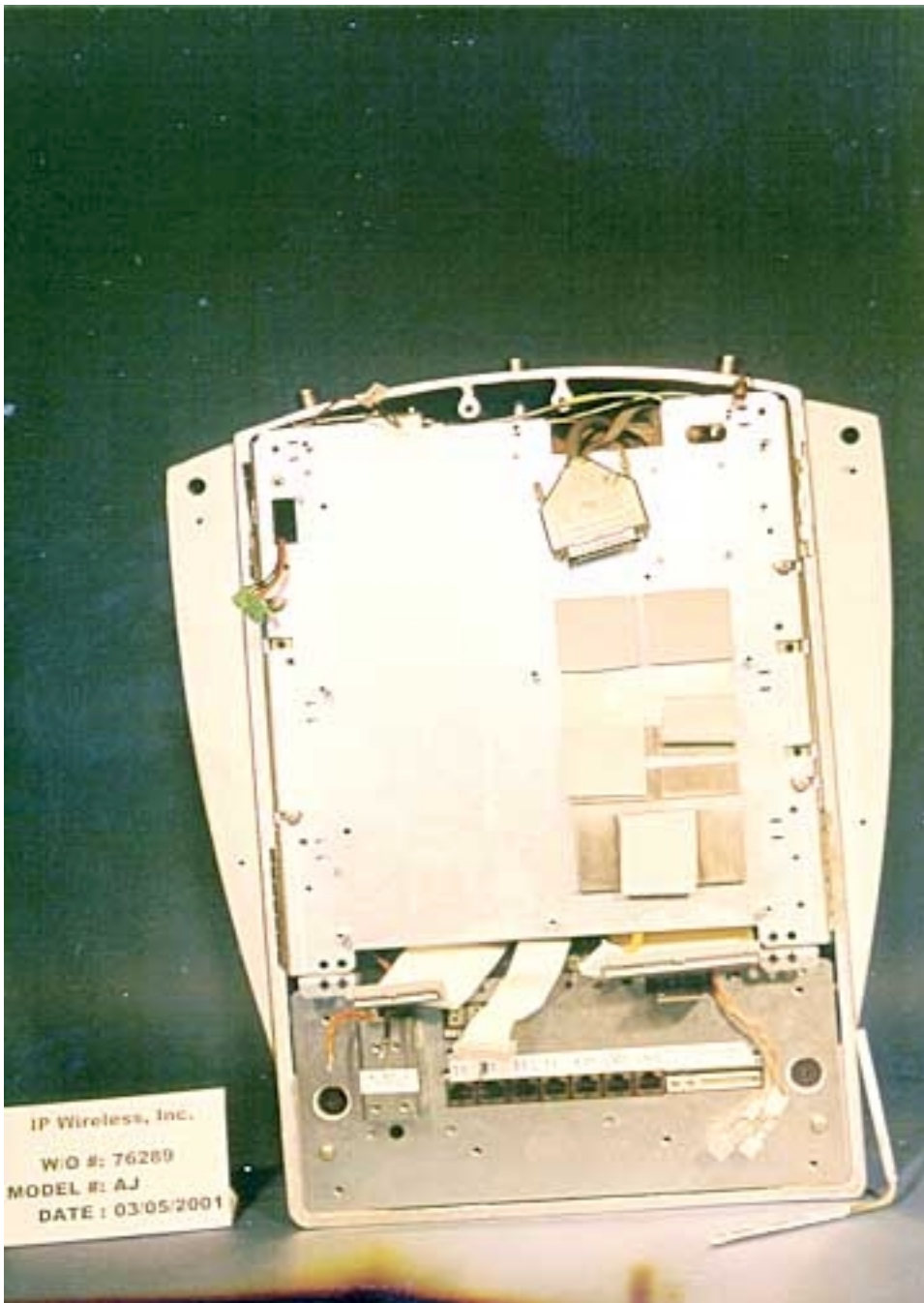
NODE B DIGITAL PASS 2

IP Wireless, Inc.
W/O #: 76289
MODEL #: AJ
DATE : 03/05/2001

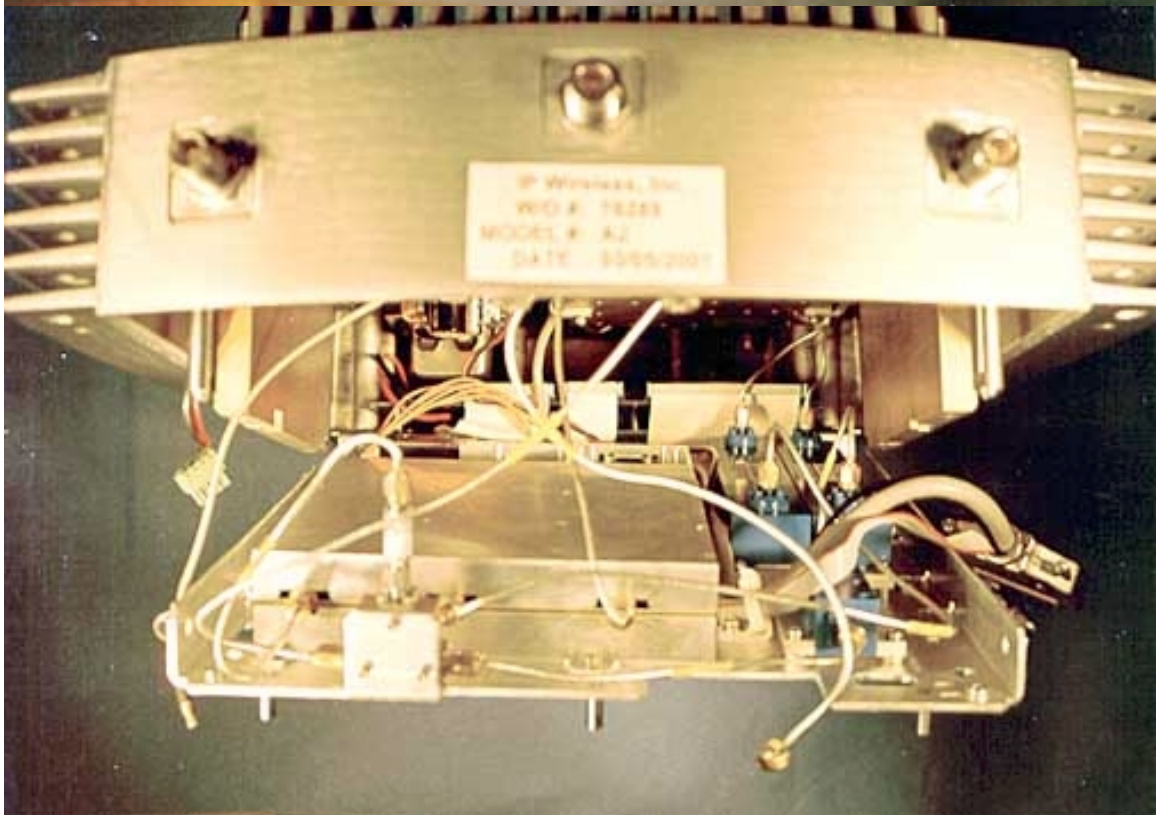
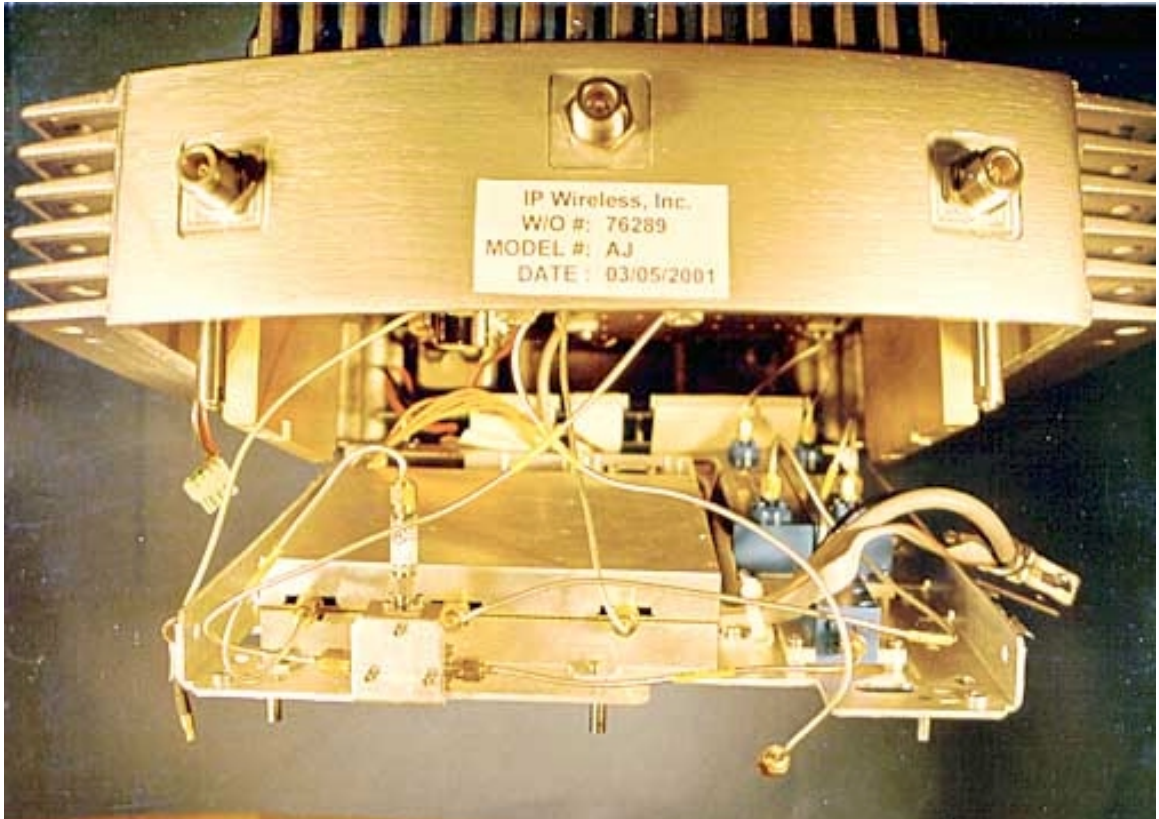


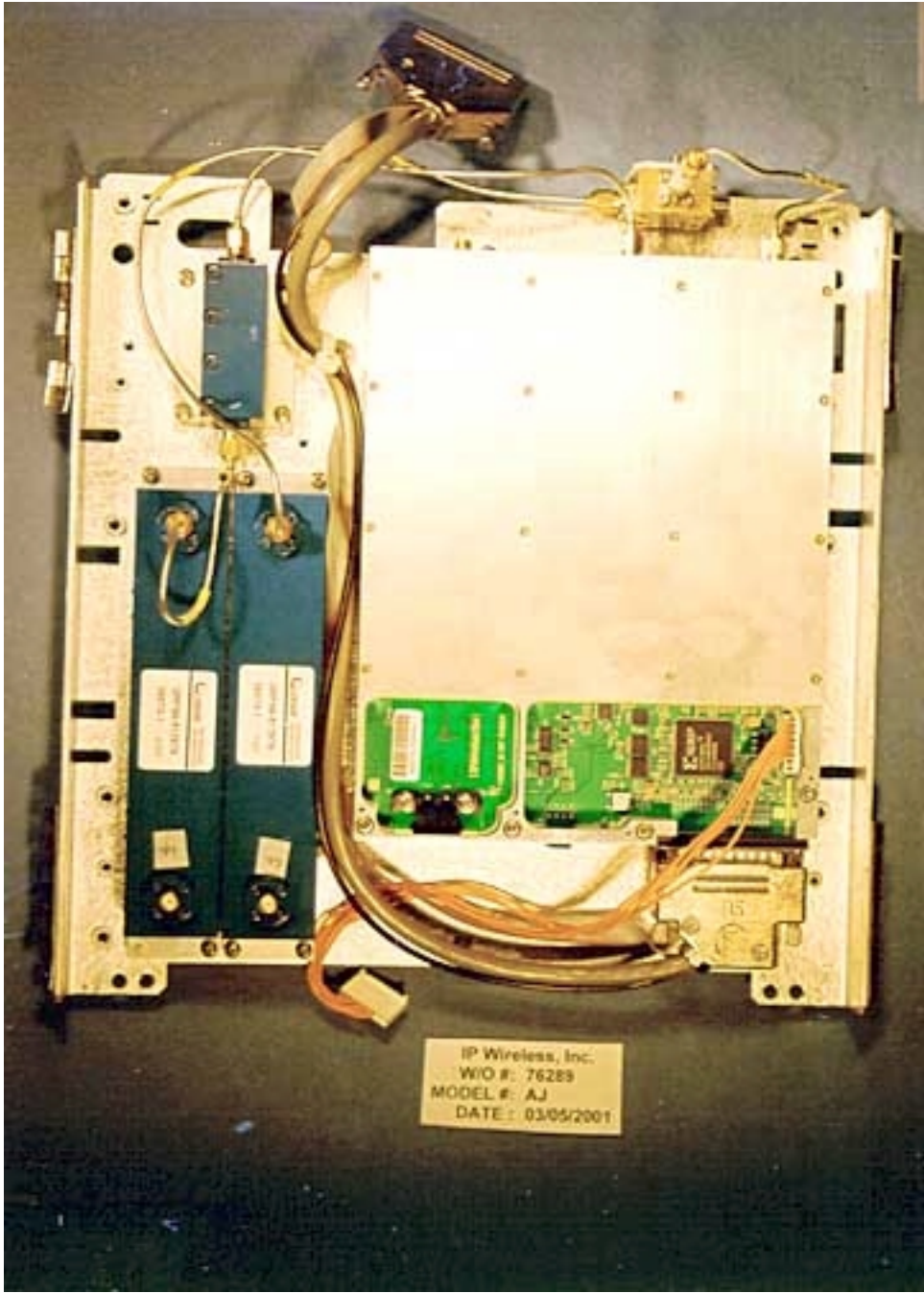
IP Wireless, Inc.
W/O #: 76289
MODEL #: AJ
DATE : 03/05/2001





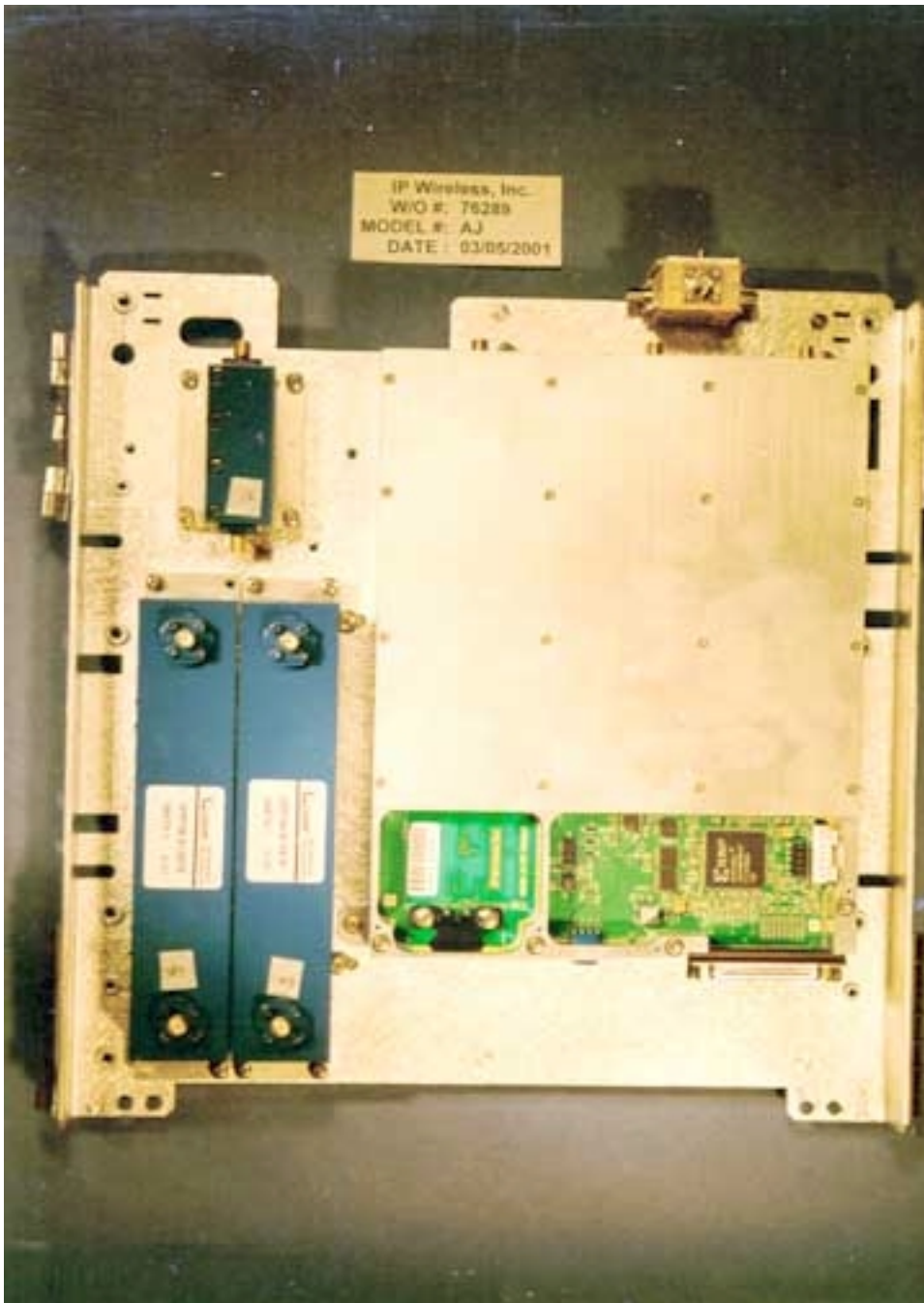
IP Wireless, Inc.
W/O #: 76289
MODEL #: AJ
DATE : 03/05/2001



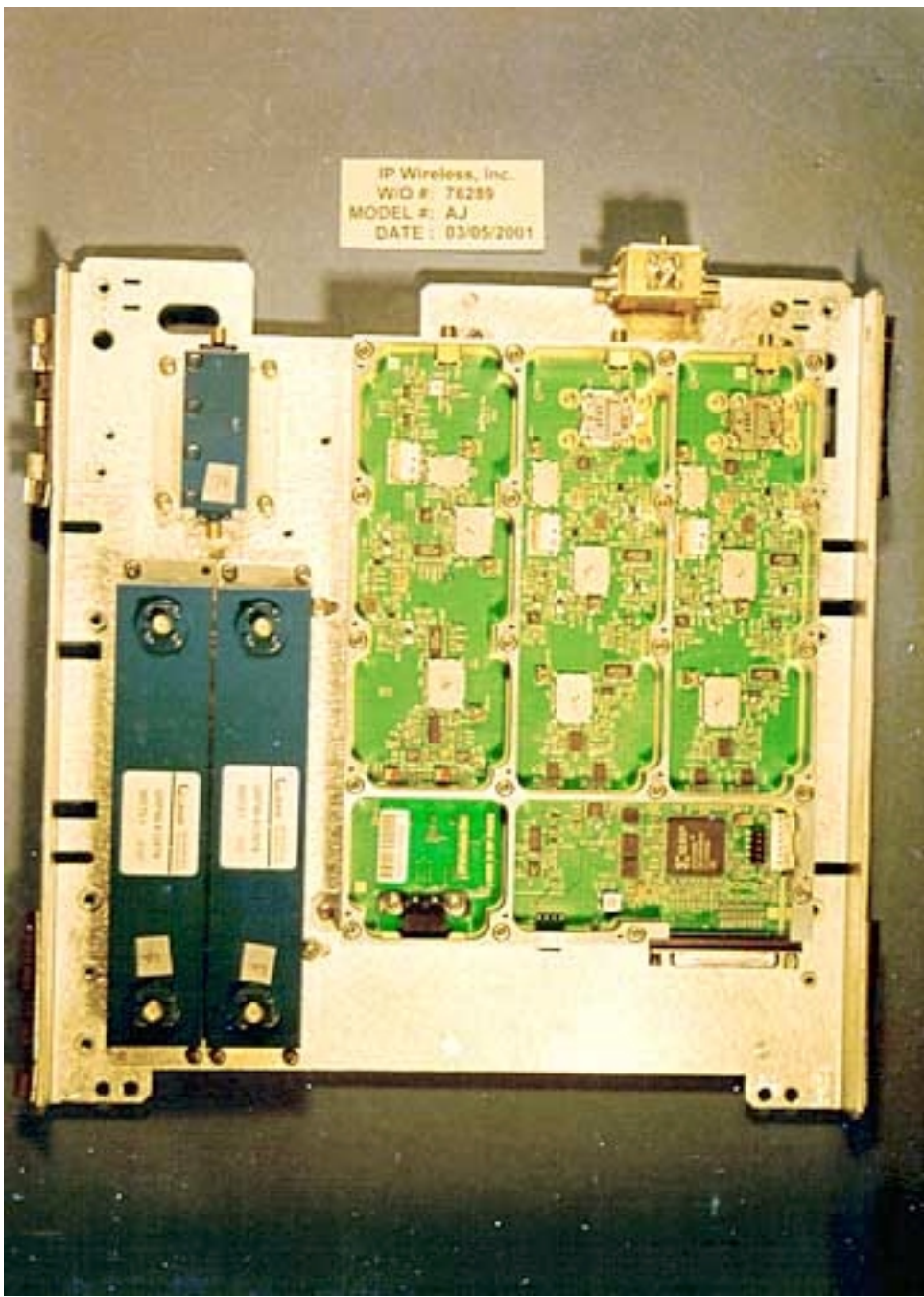


IP Wireless, Inc.
W/O #: 76289
MODEL #: AJ
DATE: 03/05/2001

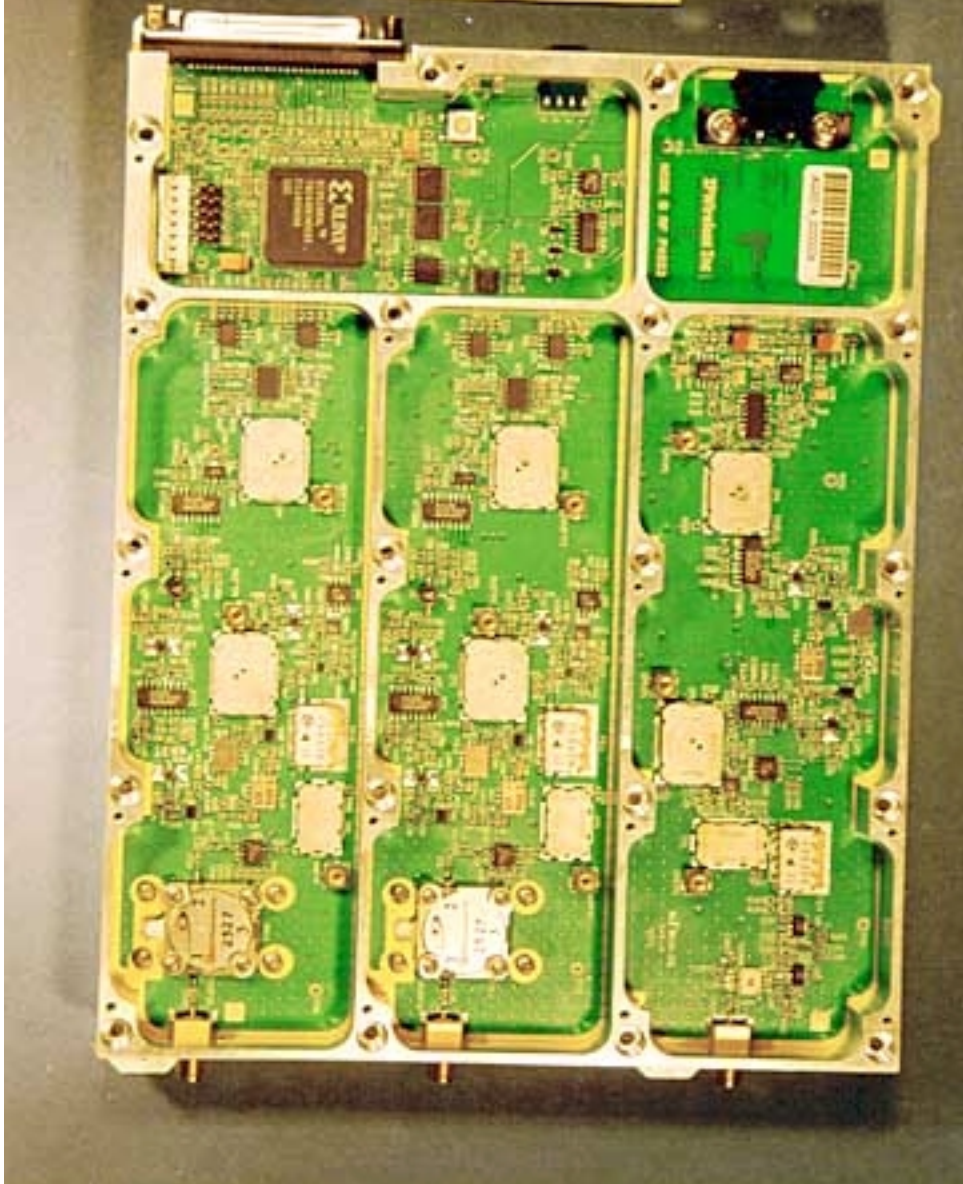
IP Wireless, Inc.
W/O #: 76289
MODEL #: AJ
DATE: 03/05/2001



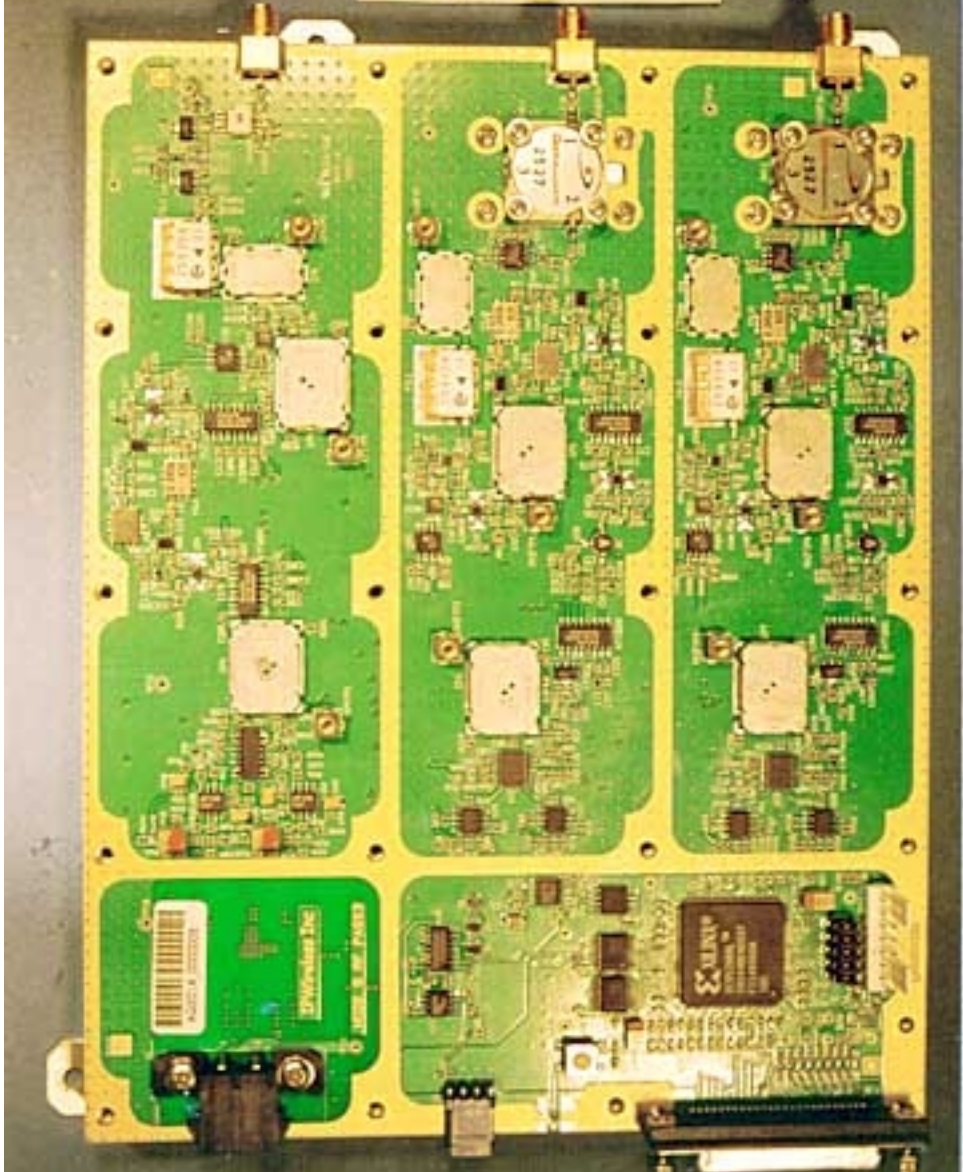
IP Wireless, Inc.
W/D #: 76259
MODEL #: AJ
DATE: 03/05/2001



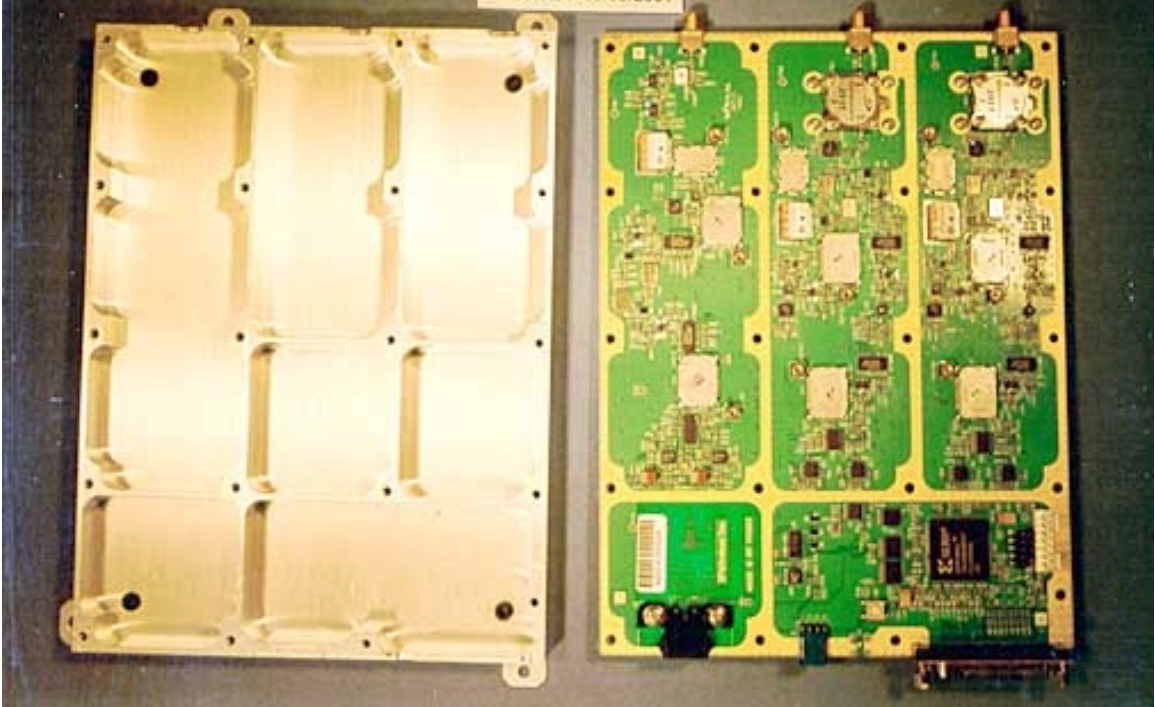
IP Wireless, Inc.
W/O #: 76289
MODEL #: AJ
DATE : 03/05/2001



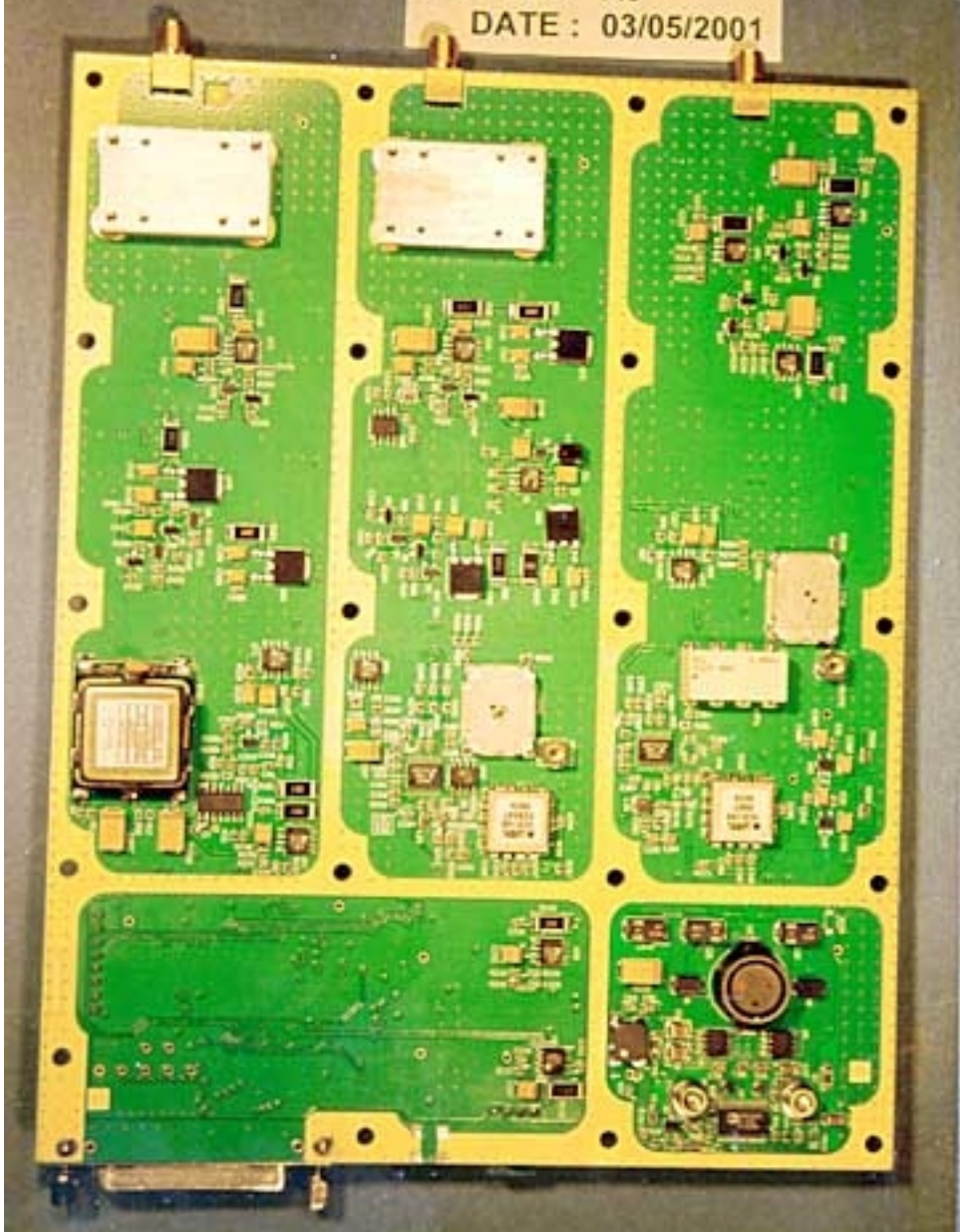
IP Wireless, Inc.
W/O #: 76289
MODEL #: AJ
DATE : 03/05/2001



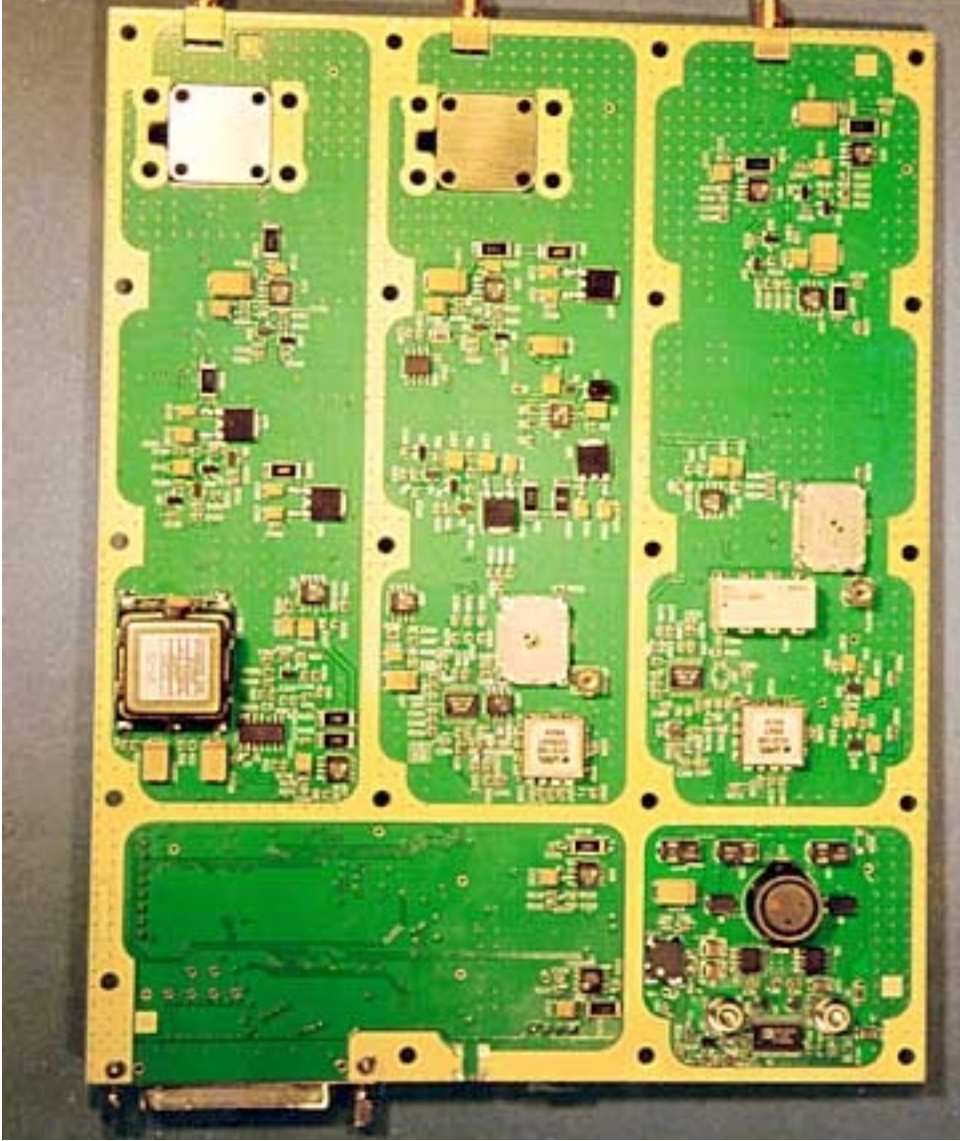
IP Wireless, Inc.
W/O #: 76289
MODEL #: AJ
DATE : 03/05/2001

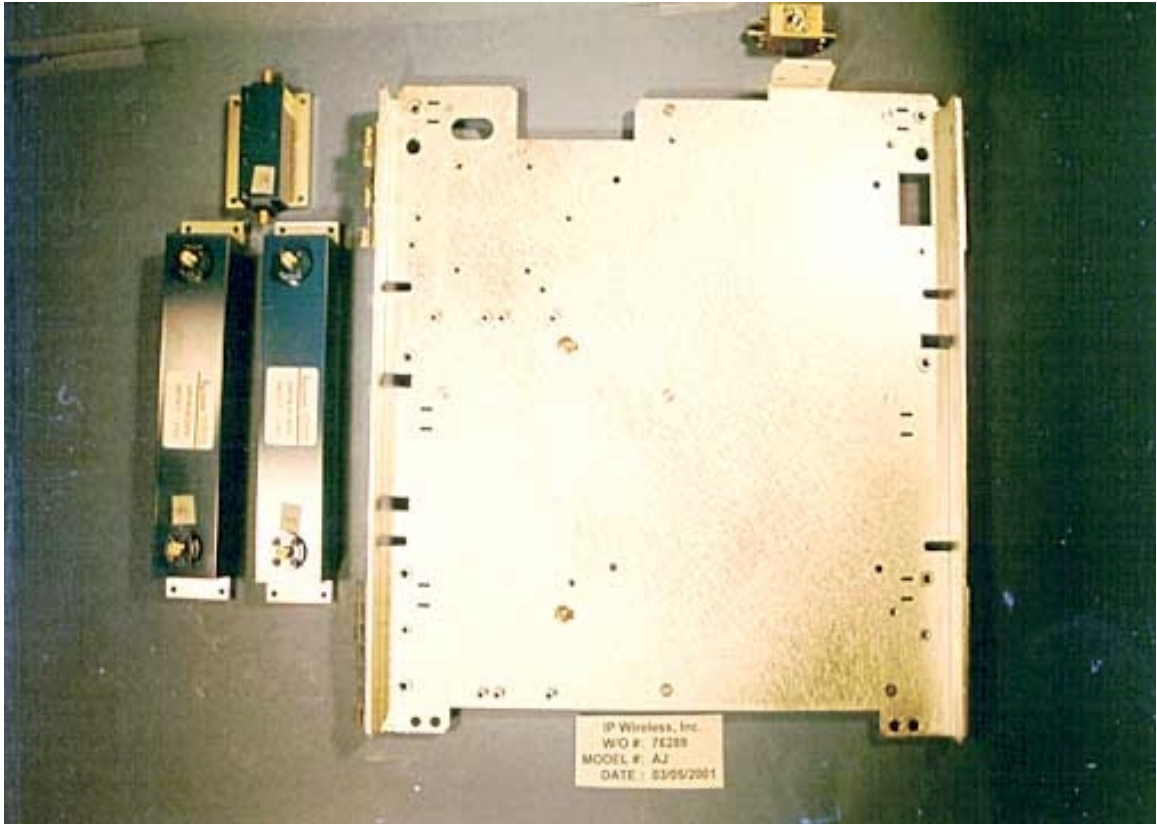


IP Wireless, Inc.
W/O #: 76289
MODEL #: AJ
DATE : 03/05/2001

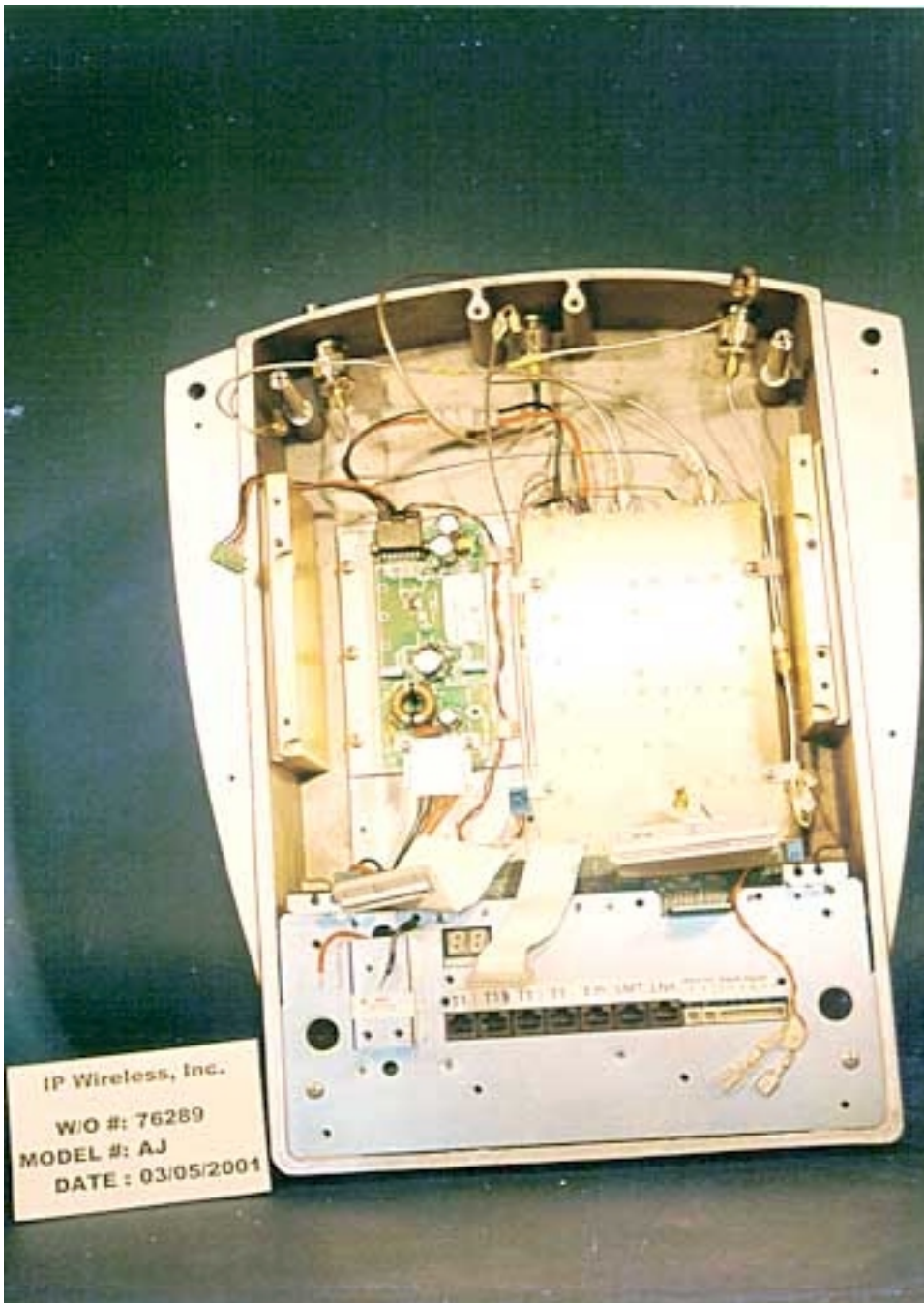


IP Wireless, Inc.
W/O #: 76289
MODEL #: AJ
DATE : 03/05/2001

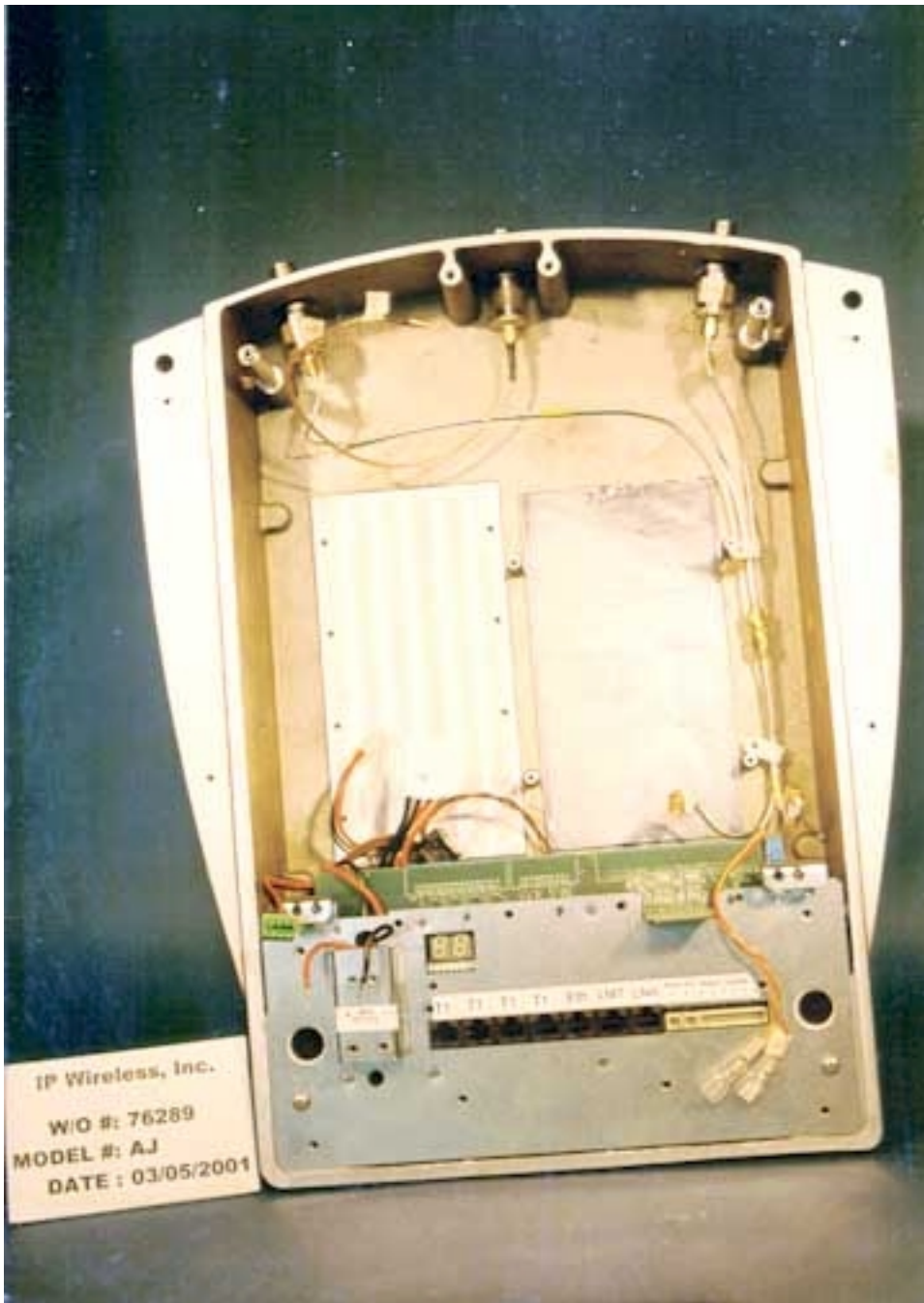




IP Wireless, Inc.
W/O # 76289
MODEL # AJ
DATE - 03/09/2001



IP Wireless, Inc.
W/O #: 76289
MODEL #: AJ
DATE: 03/05/2001

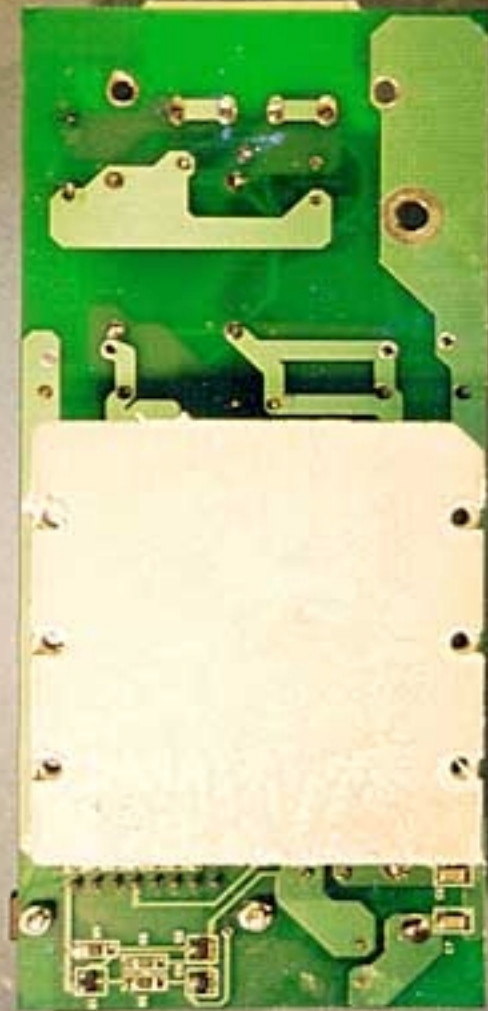


IP Wireless, Inc.
W/O #: 76289
MODEL #: AJ
DATE : 03/05/2001

IP Wireless, Inc.
W/O #: 76289
MODEL #: AJ
DATE : 03/05/2001

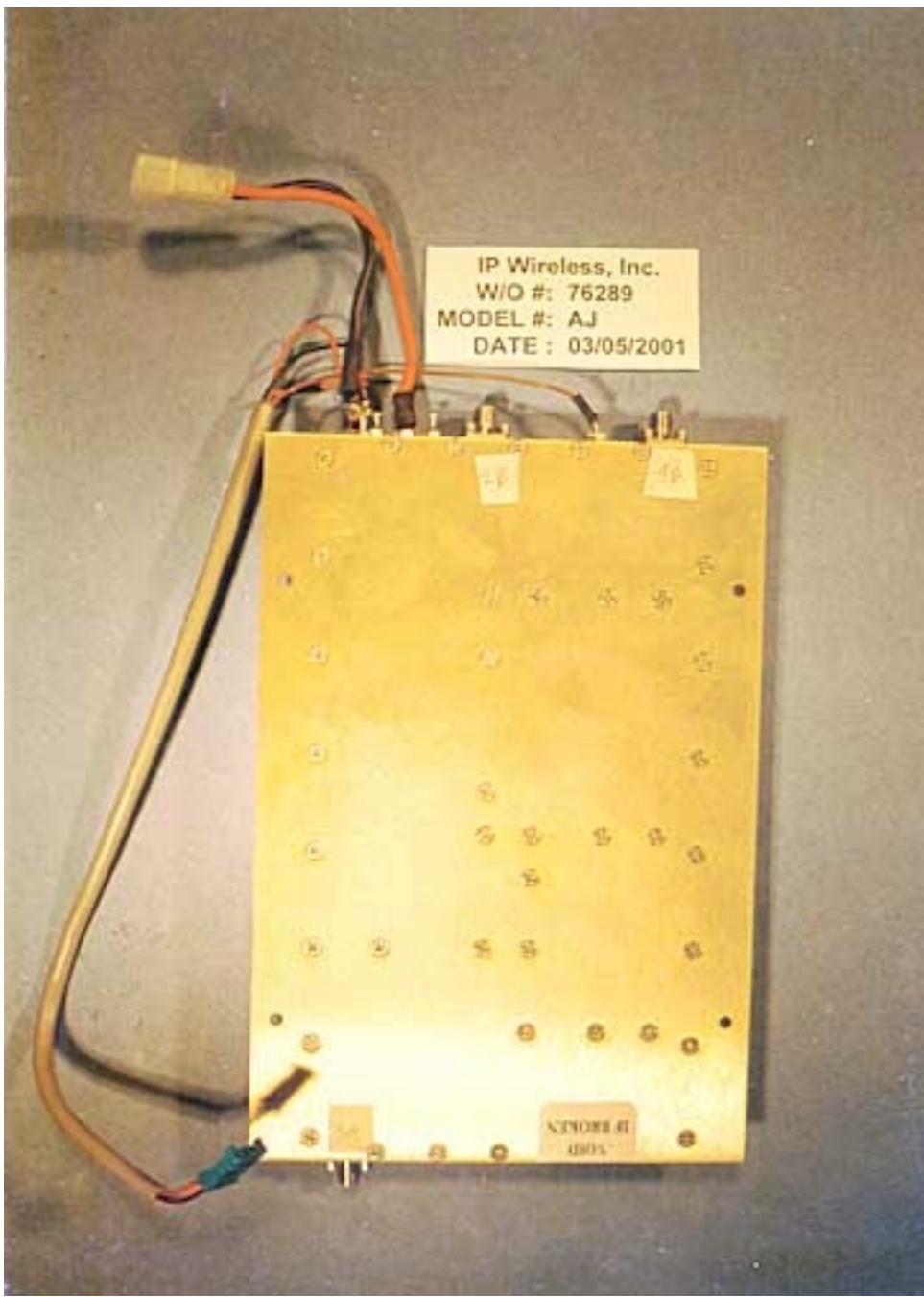


IP Wireless, Inc.
W/O #: 76289
MODEL #: AJ
DATE : 03/05/2001

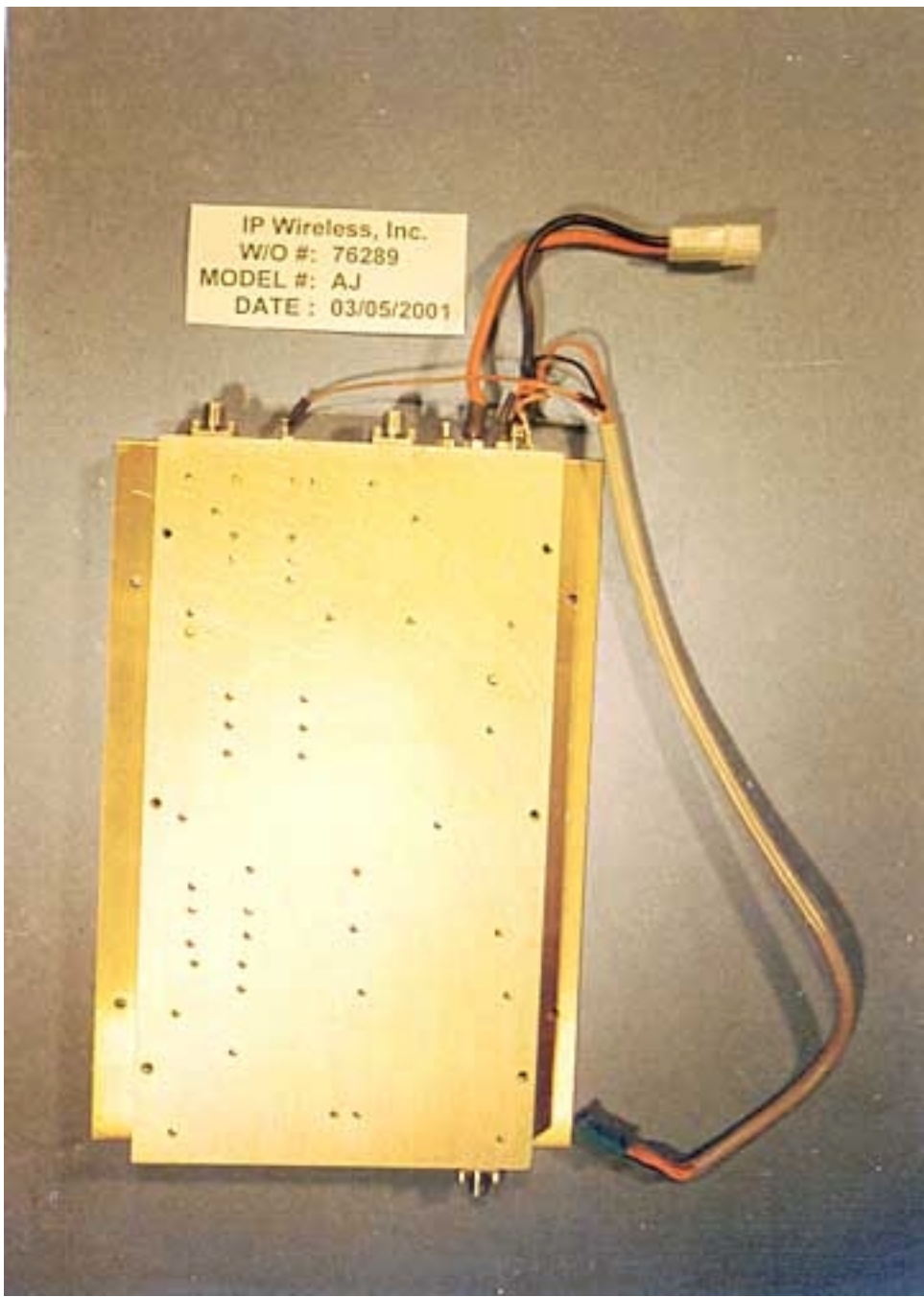


IP Wireless, Inc.
W/O #: 76289
MODEL #: AJ
DATE : 03/05/2001

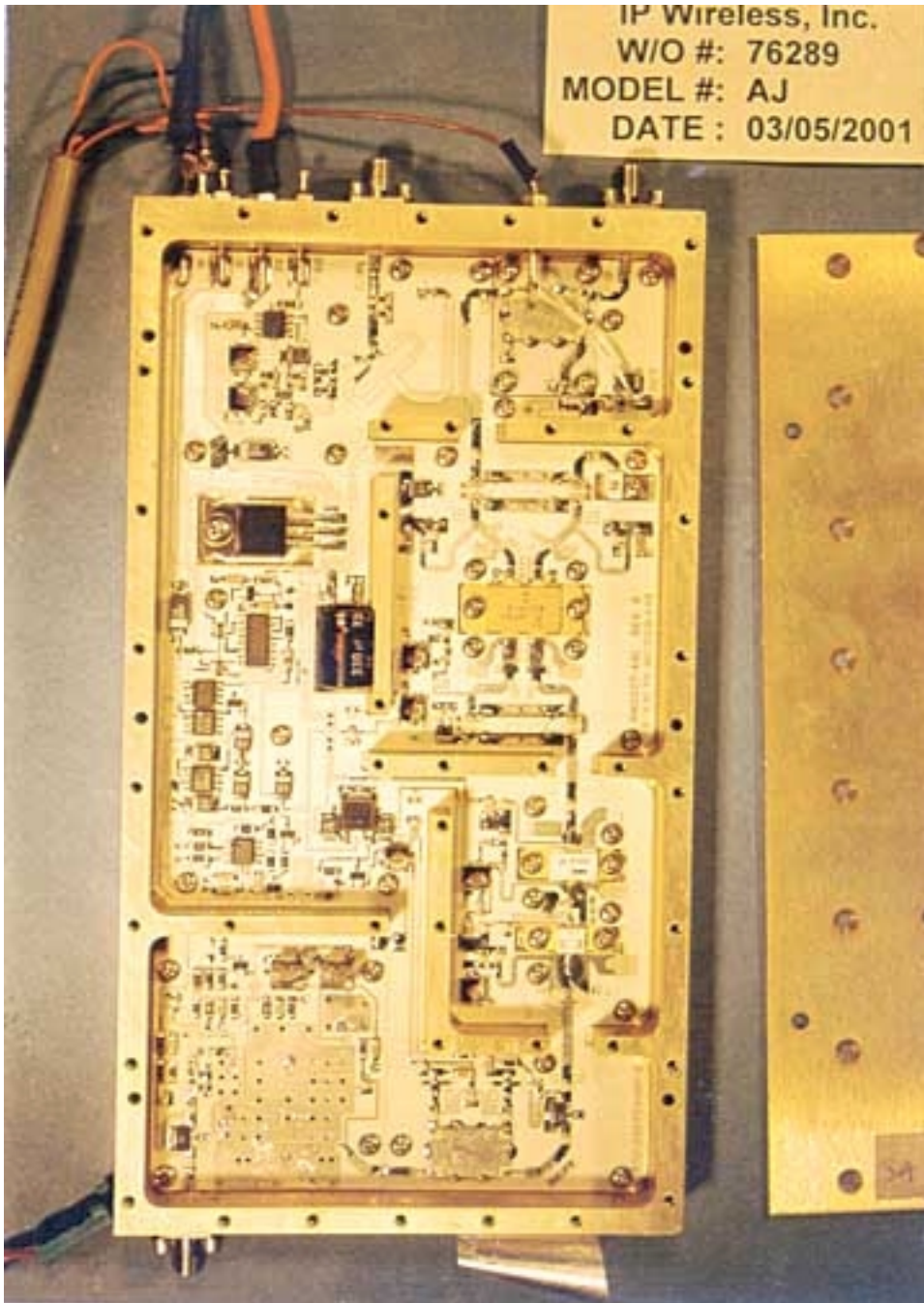
STORRE II
1901

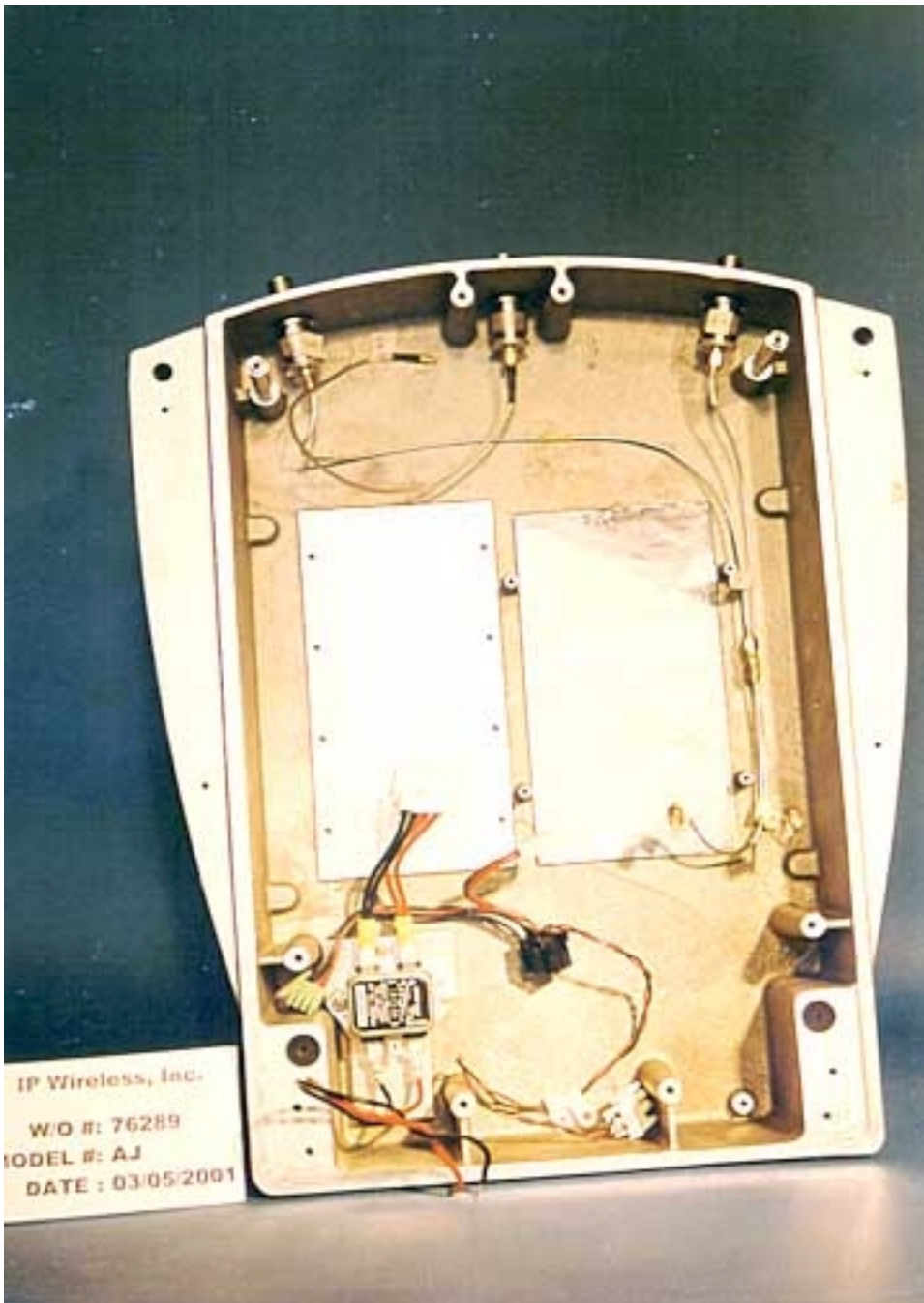


IP Wireless, Inc.
W/O #: 76289
MODEL #: AJ
DATE : 03/05/2001

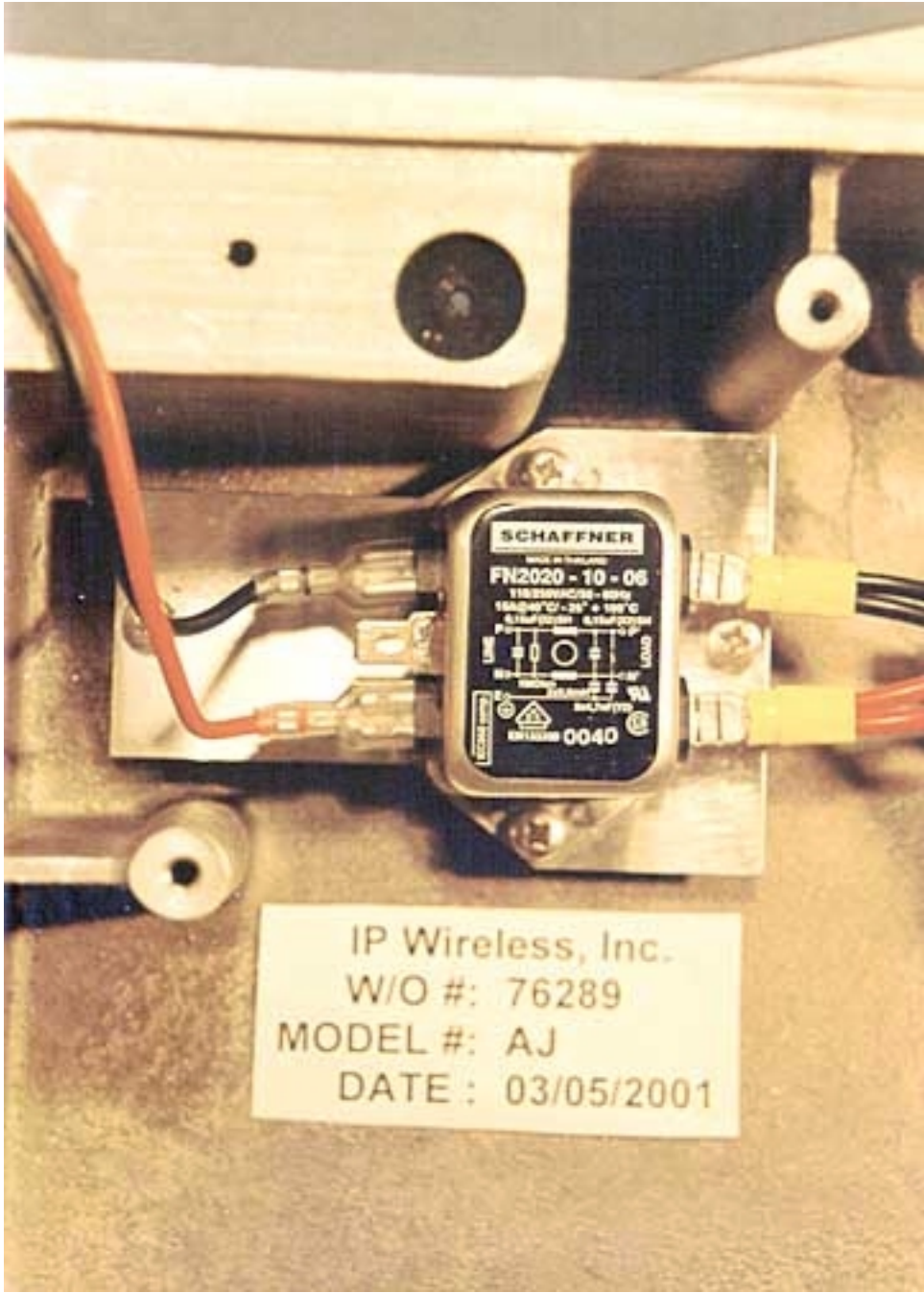


IP Wireless, Inc.
W/O #: 76289
MODEL #: AJ
DATE : 03/05/2001



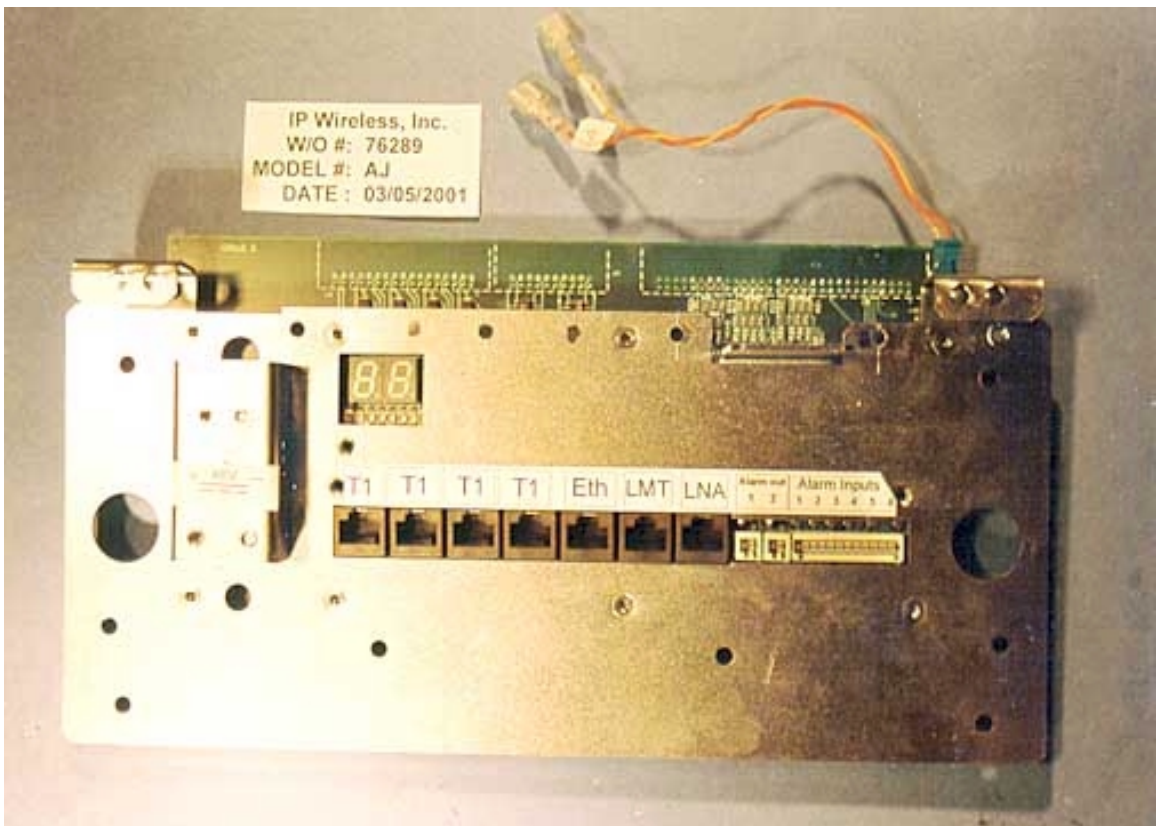


IP Wireless, Inc.
W/O #: 76289
MODEL #: AJ
DATE: 03/05/2001

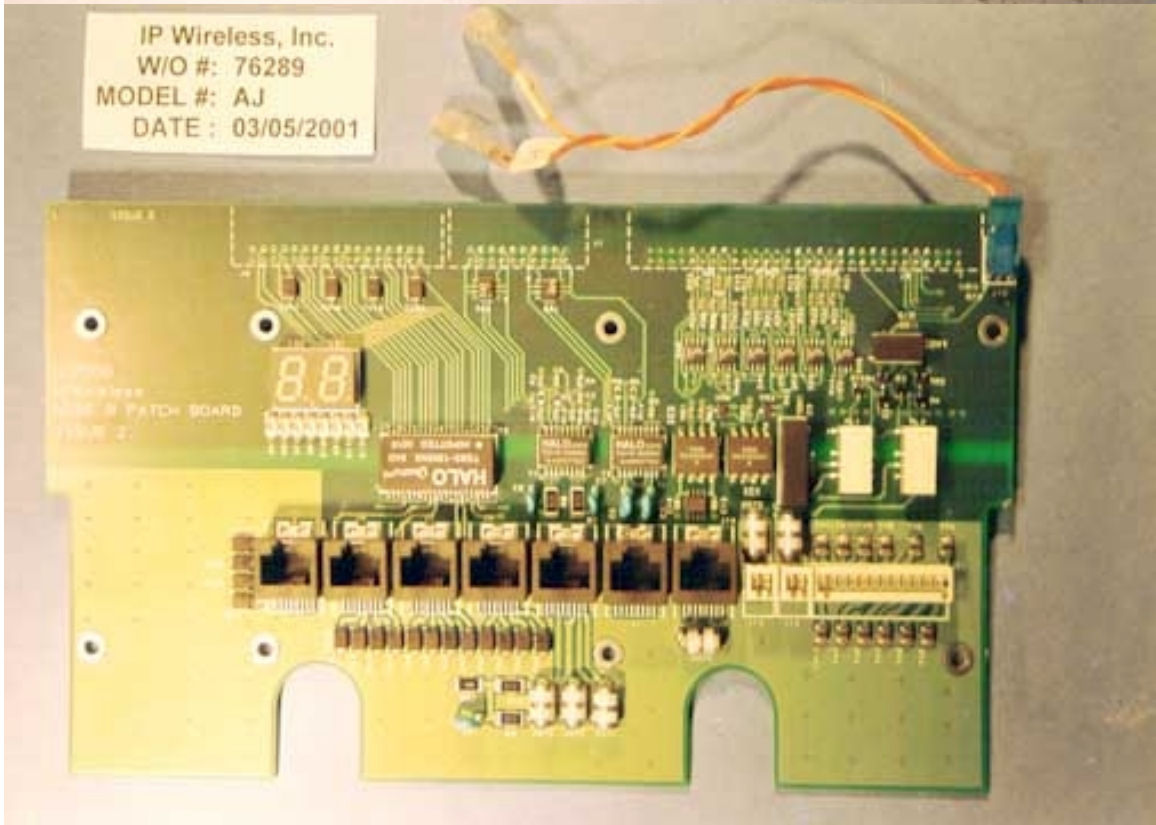


IP Wireless, Inc.
W/O #: 76289
MODEL #: AJ
DATE : 03/05/2001

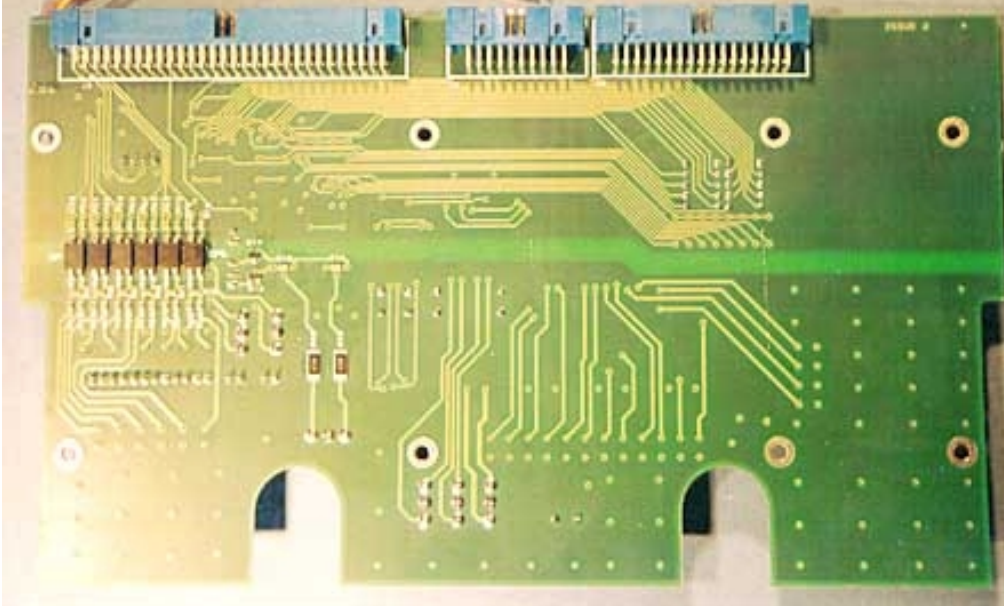
IP Wireless, Inc.
W/O #: 76289
MODEL #: AJ
DATE : 03/05/2001



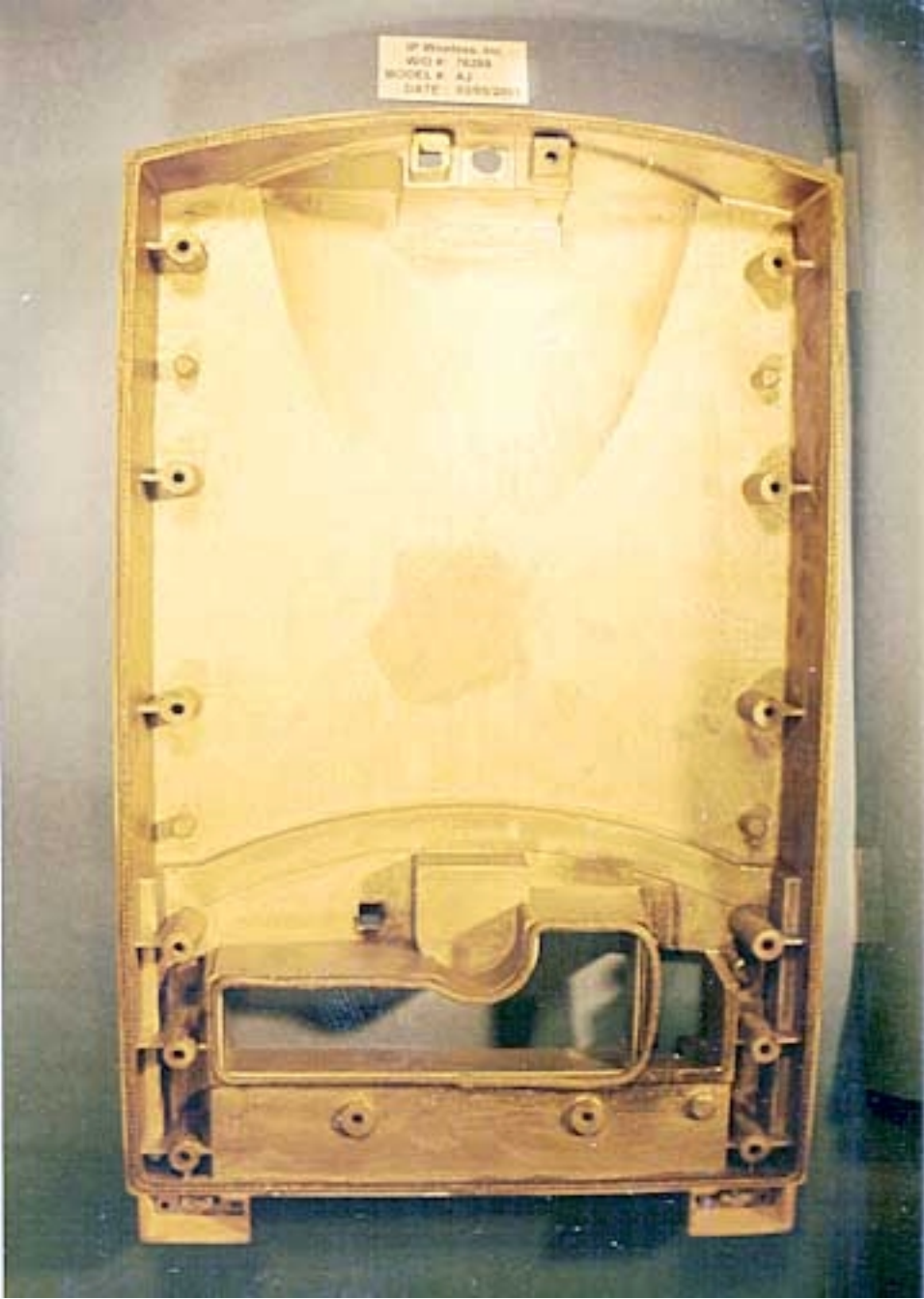
IP Wireless, Inc.
W/O #: 76289
MODEL #: AJ
DATE : 03/05/2001



IP Wireless, Inc.
W/O #: 76289
MODEL #: AJ
DATE : 03/05/2001



GP Division, Inc.
W/O # 1238
MODEL # AJ
DATE 02/05/2011



IP Wireless, Inc.
W/O # 76289
MODEL # AJ
DATE 03/05/2001

