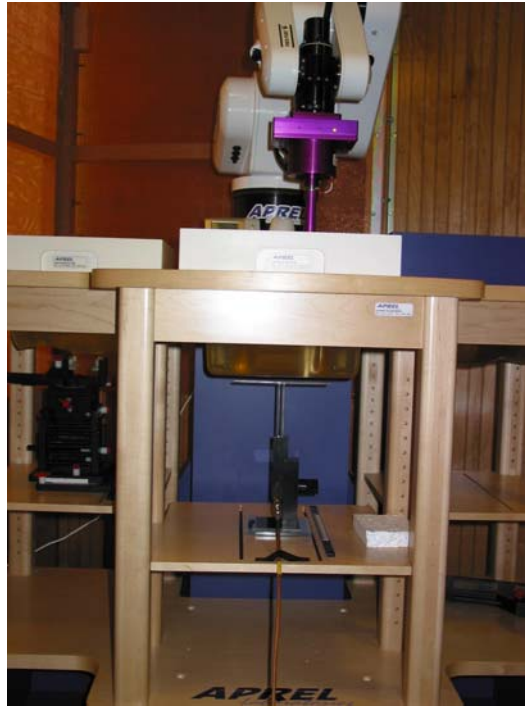
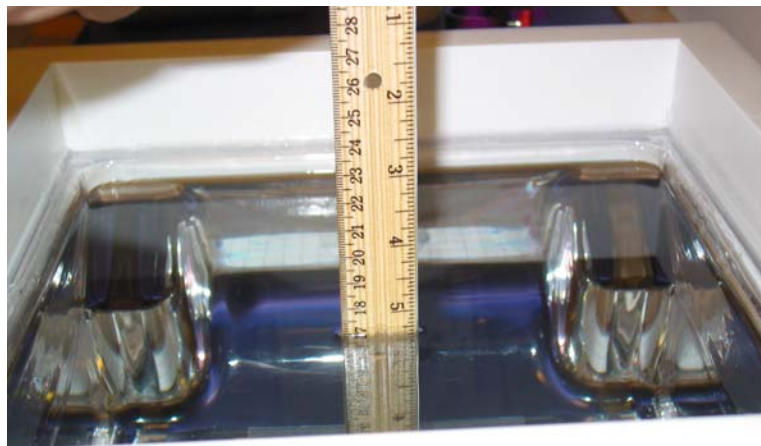


Appendix C – SAR Test Setup Photos



System Body Configuration



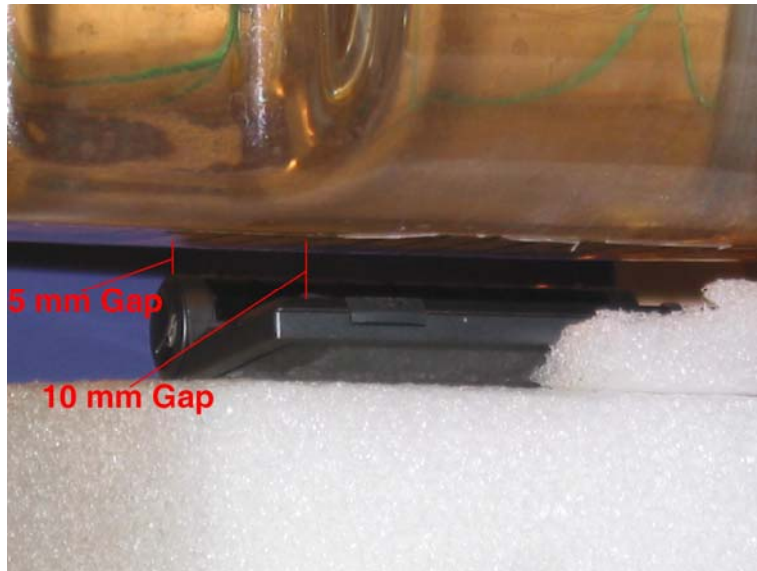
Body Tissue Depth



Test Position Side A 10 mm Gap



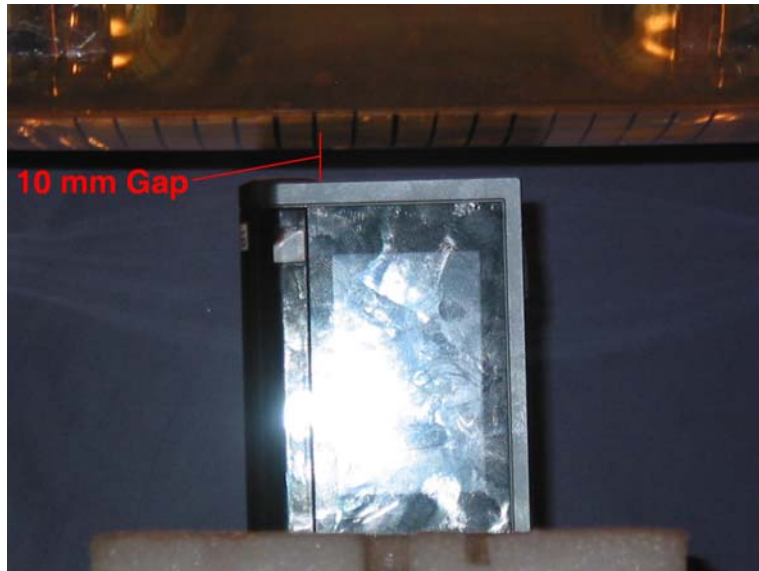
Test Position Side B 10 mm Gap



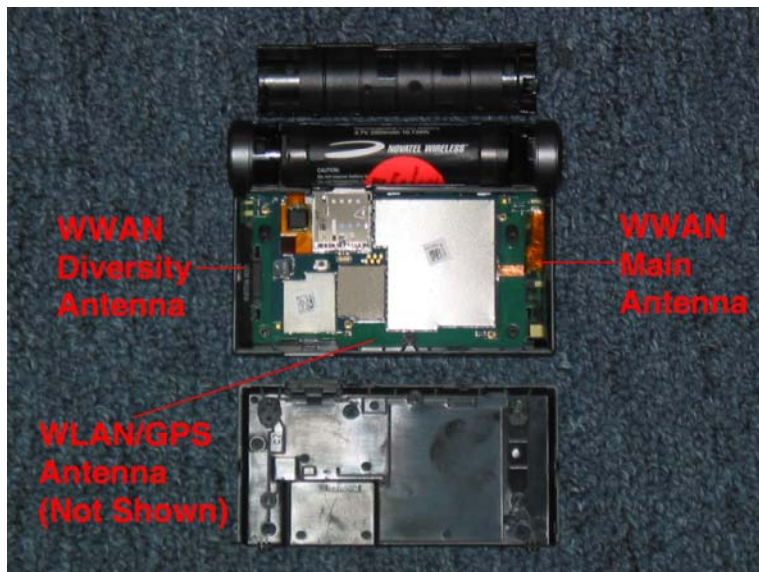
**Test Position Side C 10 mm Gap at Edge B
and 5 mm Gap at Battery**



Test Position Side D 10 mm Gap



Test Position Side E 10 mm Gap



Antenna Location



Front of Device



Back of Device