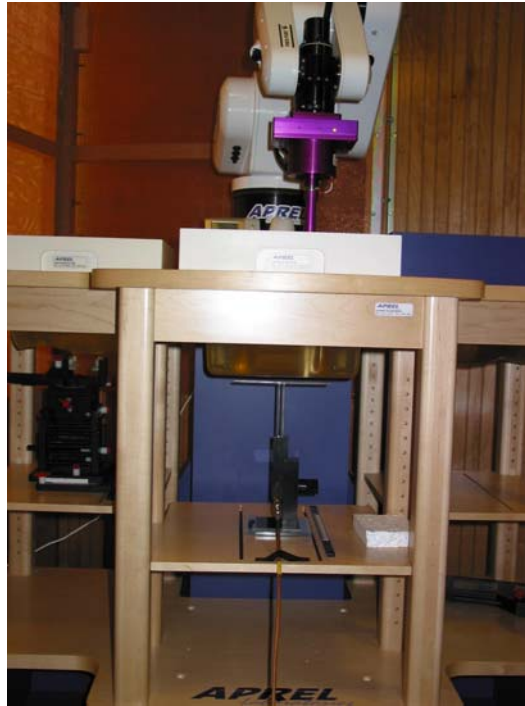
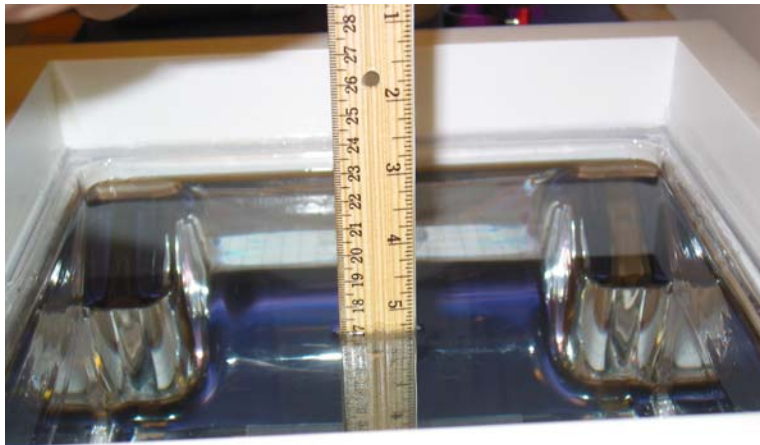


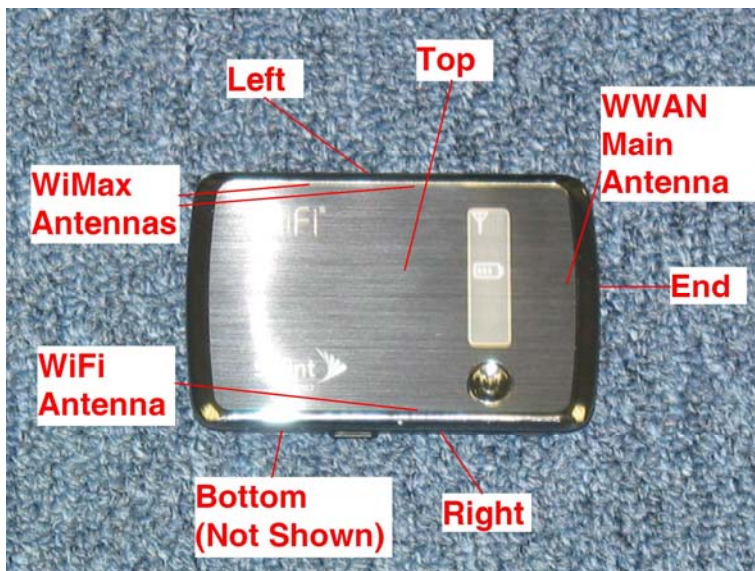
Appendix C – SAR Test Setup Photos



System Body Configuration



Body Tissue Depth

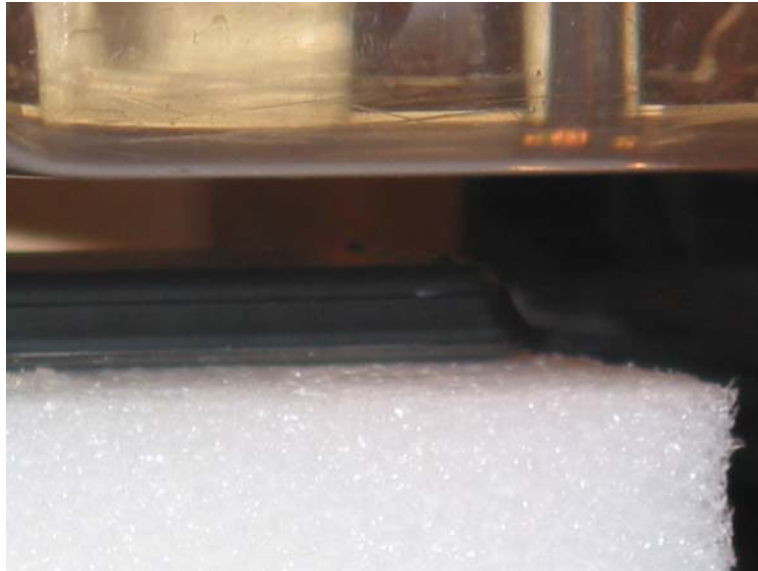


Test Position Locations

The testing was conducted on top, bottom and edges closest to each antenna. The top, bottom, end, left and right testing was conducted for the WWAN antenna. The sixth side of the unit was not tested as the WWAN antenna was more than 2.5 cm from the side. The right, top and bottom was tested for the WLAN antenna. The remain three sided were not tested as the antenna was more than 2.5 cm from the three sides. The WiMax testing was conducted on the left, top and bottom for each antenna. The remaining three sides were not tested as the antenna is located more than 2.5 cm from the side. All testing was conducted per TCB Workshop October 2010 presentation. KDB inquiry number 869935 provided guidance to the sides and bands tested. See the photo in Appendix C for a pictorial of the setups, labeling of the sides tested and antenna locations.



Top Test Position 12 mm Gap



Bottom Test Position 12 mm Gap



Right Test Position 12 mm Gap



Left Test Position 12 mm Gap



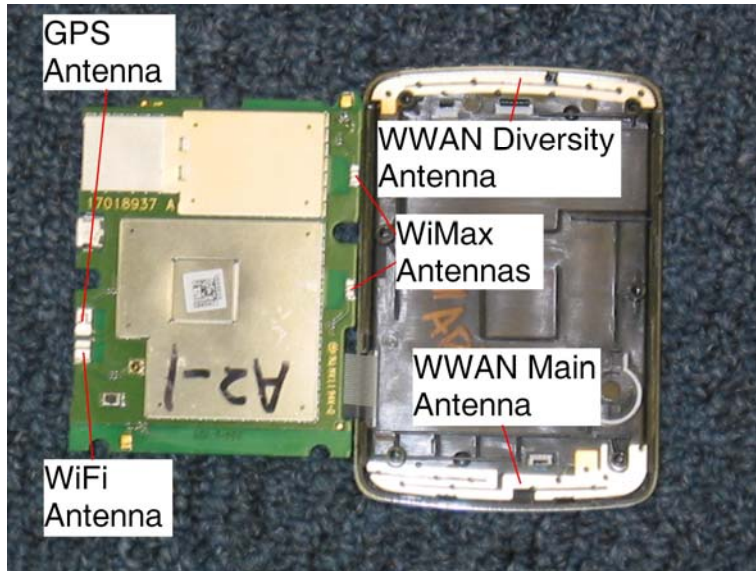
Front of Device



Back of Device



Front Battery



Antenna Locations