

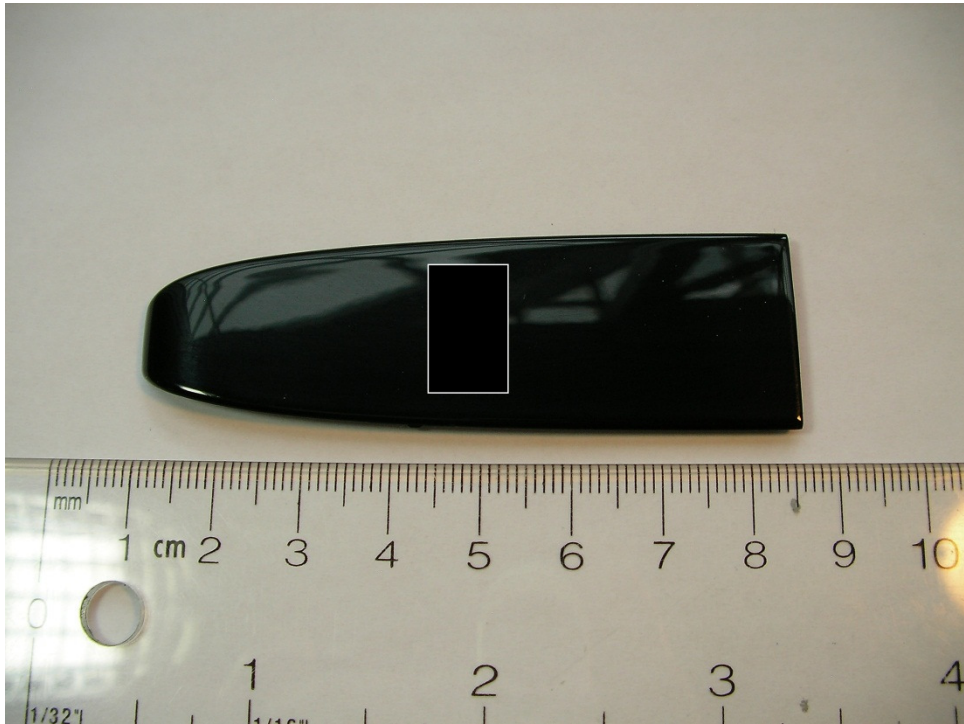
Main Tx/Rx (non removeable)



Top cover (non-removable)



Inside top cover

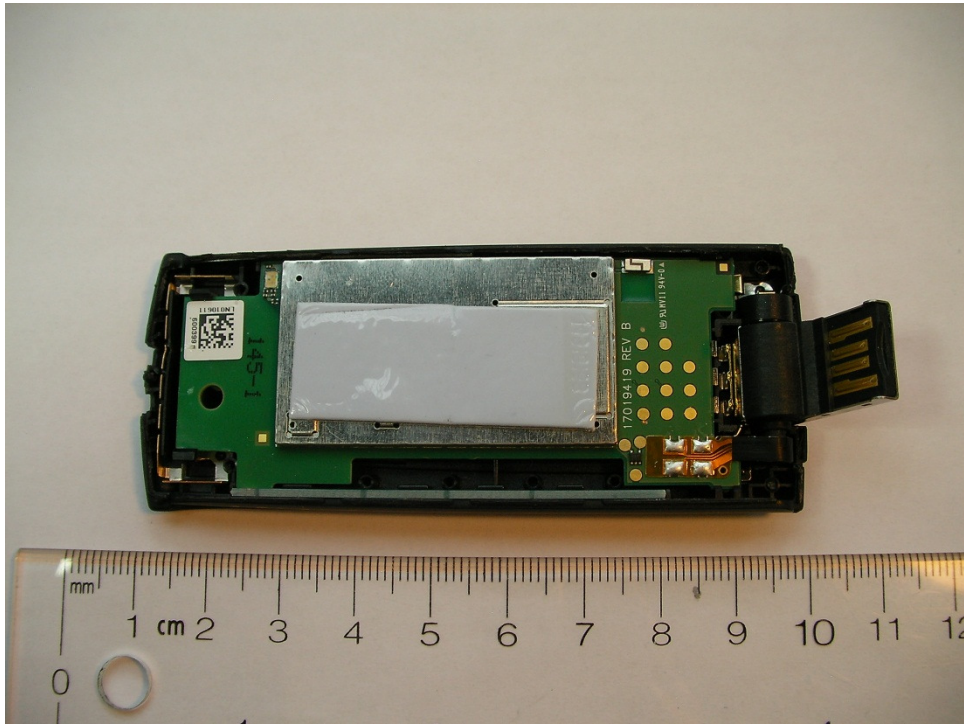


Back cover (removable)

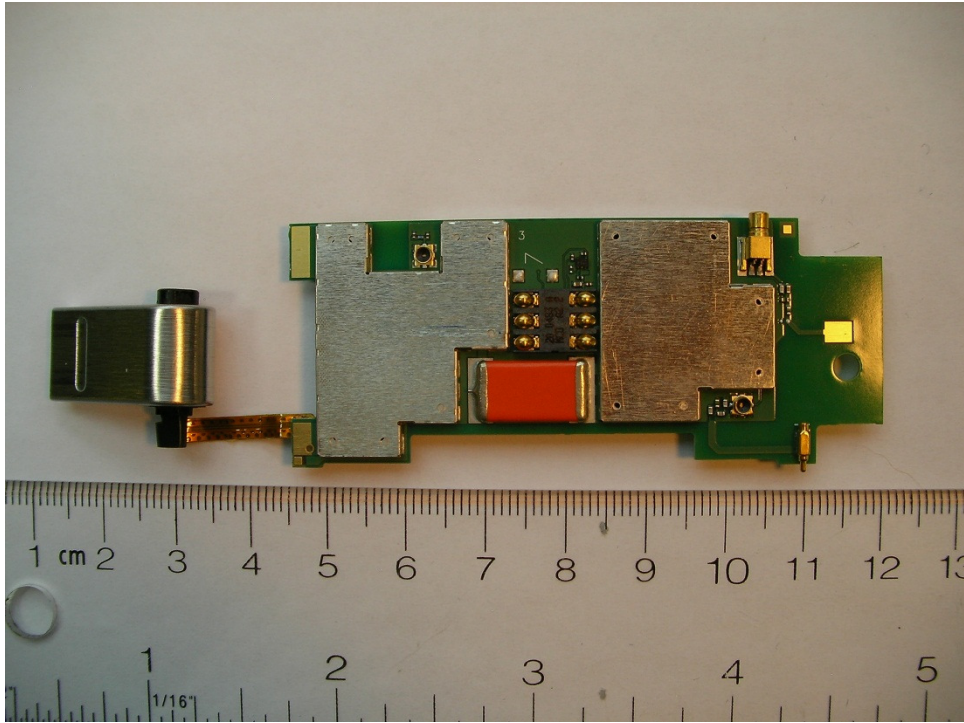




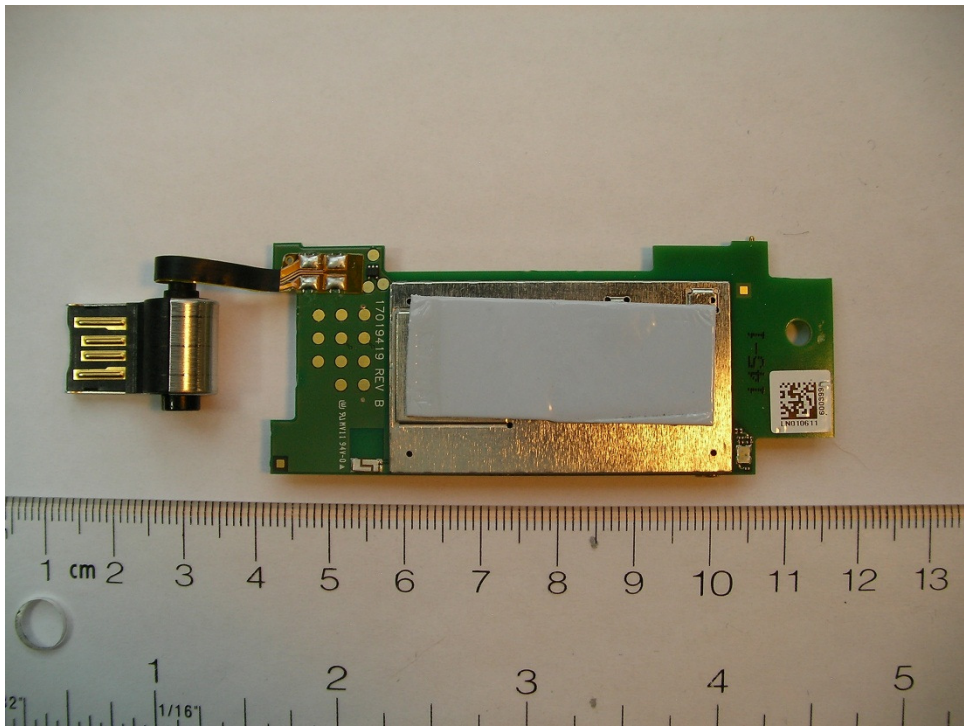
Inside back cover



Internal - top cover removed

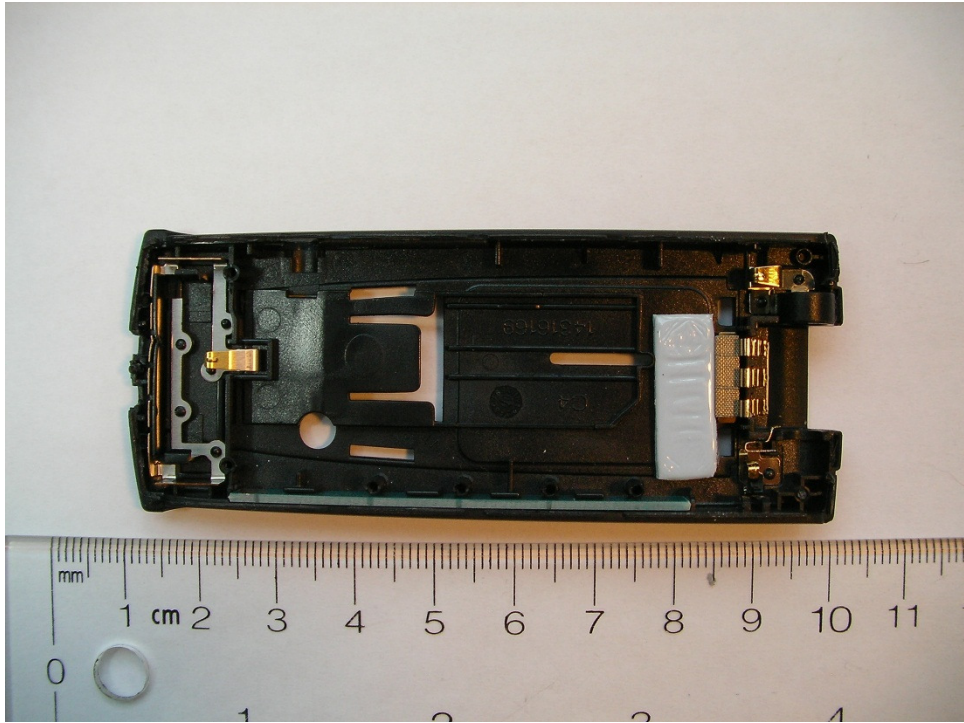


Internal backside

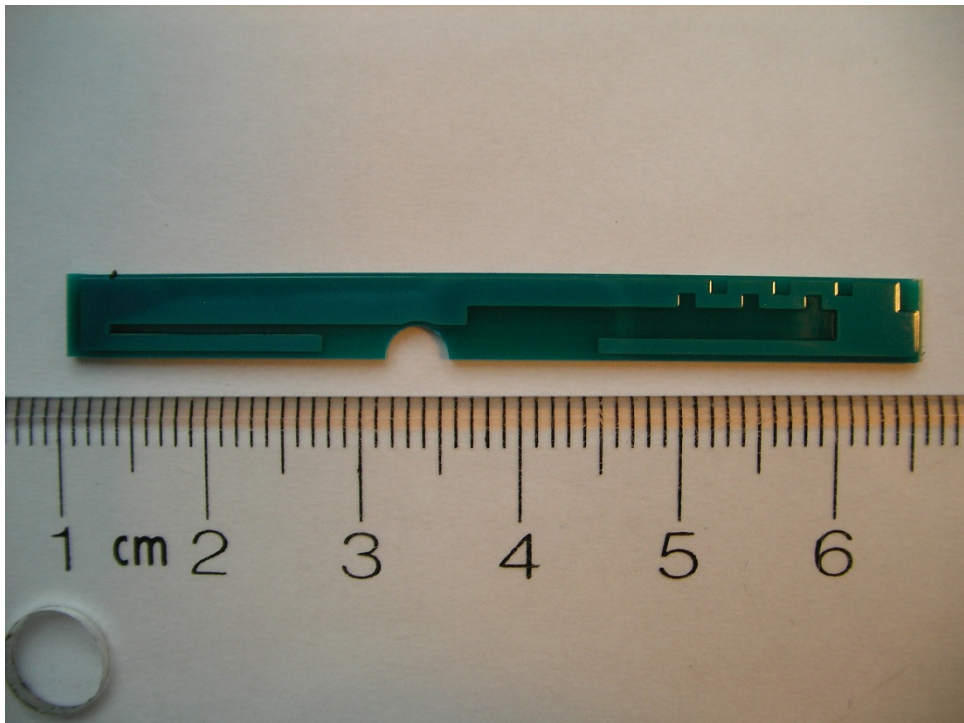


Internal topside

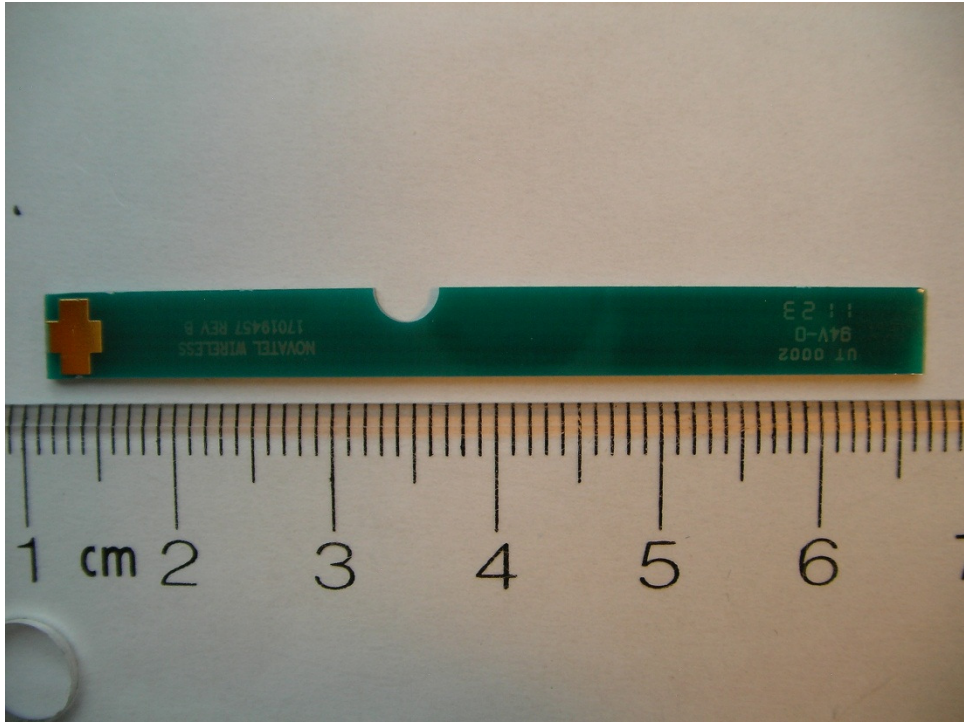




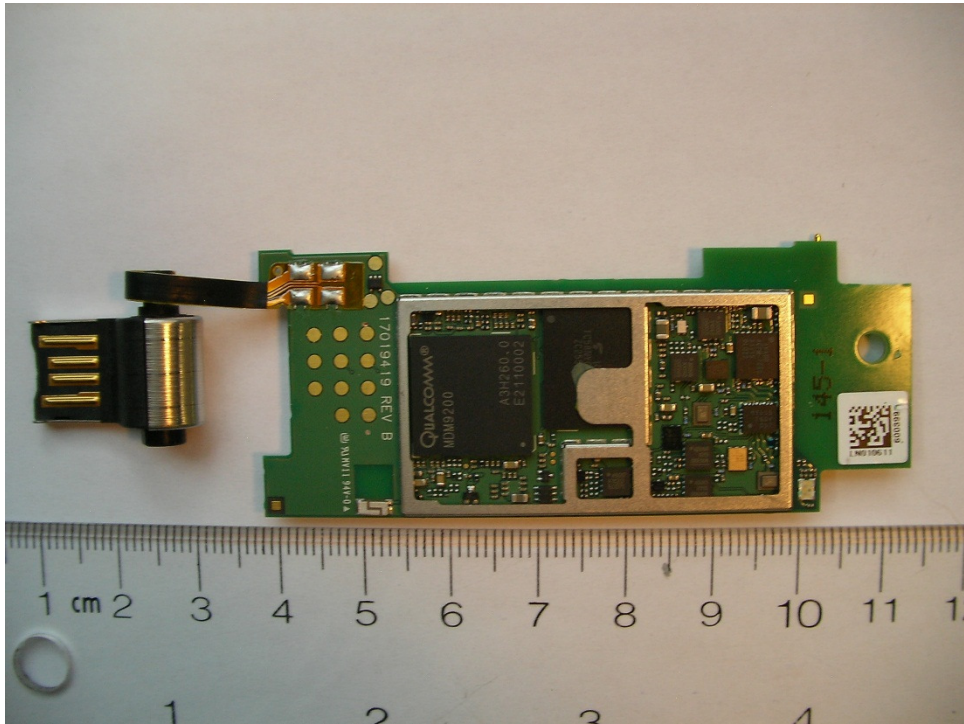
Internal body



Diversity antenna side 1

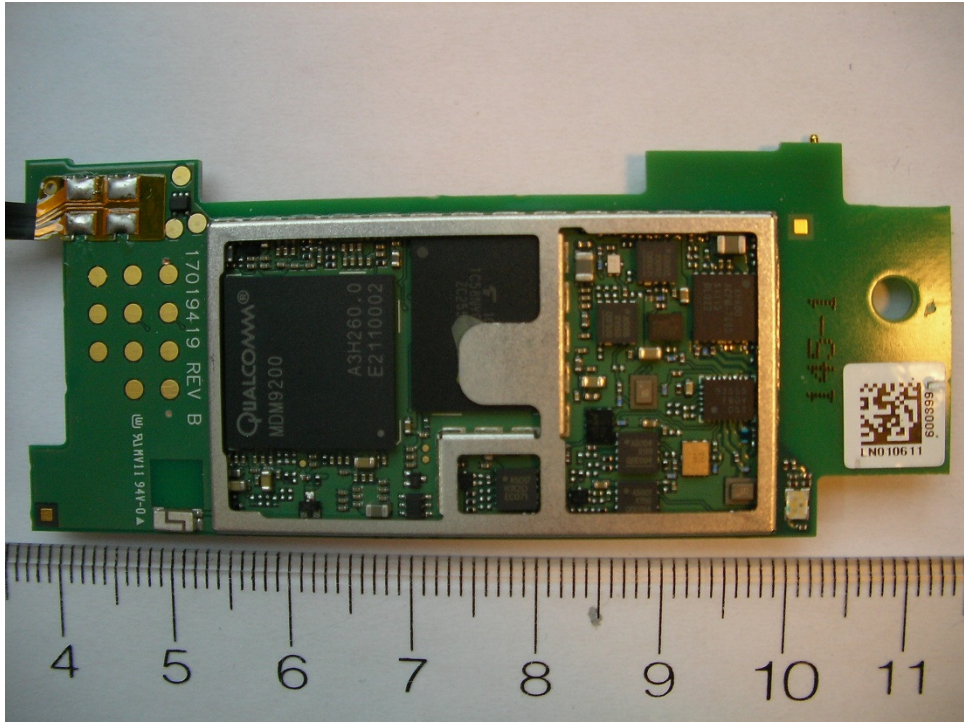


Diversity antenna side 2

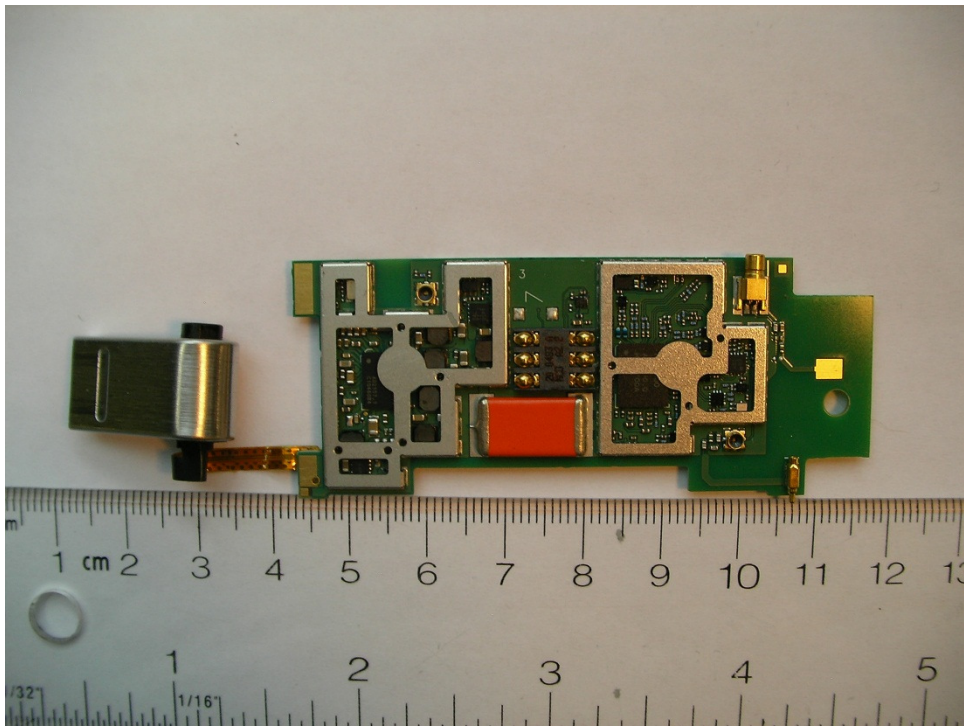


Internal topside shields removed

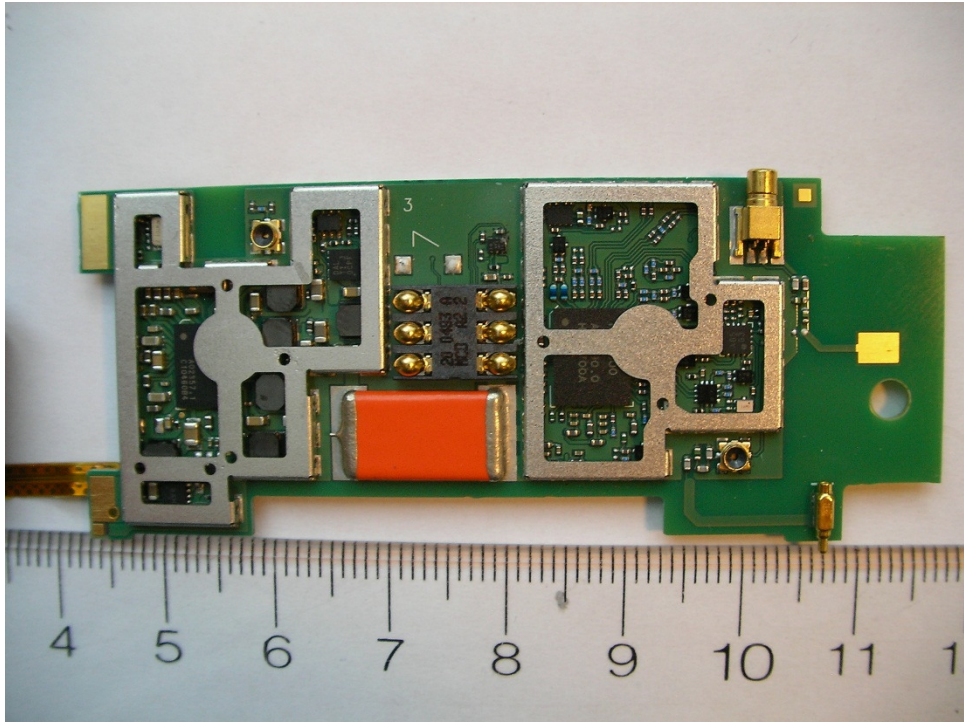




Internal topside shields removed



Internal backside – shields removed



Internal backside – shields removed