

## Quick Start Guide

### BCM92046mPCIe\_UWB Bluetooth® Installation

Before you begin to use the Bluetooth, you will require the following items:


A computer with an internal PCI-E port and one of the following operating systems:  
Microsoft® Windows® XP or Windows Vista.

The Software Installation Compact Disc included with your Bluetooth Module.

#### Step 1: Installing the Software

**NOTE:** This installation is required before you insert the module into the USB port of your computer.



1. Insert the Bluetooth Module installation compact disc (CD) into the CD-ROM or DVD drive of your computer.
2. If the **Main Menu** screen appears automatically, select **Install software** and click **OK**. If the **Main Menu** screen does not appear automatically, click **Start**, click **Run**, type **x:\setup.exe** (where **x** is the CD-ROM or DVD drive letter of your computer), and click **OK**.
3. Click **Next**, click **Finish**, and then restart your computer.
4. Right-click the Bluetooth icon  in the taskbar notification area (system tray) and click **Start Using Bluetooth**. Follow the instructions provided by the **Initial Bluetooth Configuration Wizard**.

## Step 2: Inserting the Module

Make sure that the Bluetooth Module is properly inserted inside your computer.

If you started at **Step 1: Installing the Software**

The **Found New Hardware Wizard** detects and installs the device. When the installation is finished, you are ready to begin using the Bluetooth features of this computer.

If you *skipped Step 1: Installing the Software*, you are ready to begin using the Bluetooth features of this computer.

**NOTE:** Before you begin, however, please review the *Bluetooth Module User's Guide*. This document provides important information and instructions that will help you do the things you want to do with your Bluetooth enabled computer.

## Glossary

<b>Authentication</b>	A Bluetooth security feature that is used to verify identity; it requires a Bluetooth PIN Code from the remote device.
<b>Authorization</b>	A Yes-or-No Bluetooth security feature that requires operator intervention to avoid having the connection time out and fail.
<b>Bluetooth device</b>	Bluetooth enabled hardware such as a computer, printer, fax, mouse, keyboard, cell phone, headset, or PDA.
<b>Bluetooth PIN Code</b>	The alphanumeric string (up to 16 characters) that is typed to respond to a Bluetooth PIN Code Request. Also referred to as a <i>Passkey</i> .
<b>Bluetooth®</b>	A short-range (9.14 meters/30 feet) networking protocol that allows enabled devices to automatically recognize each other. Bluetooth wireless technology allows quick and easy connectivity of Bluetooth enabled devices.
<b>Client Applications</b>	Software applications on this computer that allow this computer to use the Bluetooth services provided by remote Bluetooth devices.
<b>Link Key</b>	An internally generated unique security key (based on a Passkey, the Bluetooth Device Address, and an internally generated random number) that is exchanged by paired devices as proof of identity before a connection is established.
<b>Local Services</b>	Services that this computer provides to other Bluetooth devices.
<b>Paired Devices</b>	Bluetooth devices must be paired before they can connect. Paired devices share a unique Link Key, which they exchange each time they connect.
<b>Secure Connection</b>	A setting that requires a Passkey or Link Key each time you attempt to make a connection. All data exchanged over the Bluetooth connection is encrypted. Depending on other configuration options, authorization may also be required.

### Before You Begin

Before you begin the installation of the products, please check to make sure that the following items are included in your package.

#### Operating Systems Requirements:

Windows VISTA (32/64-bit) or Windows XP

### Check Your Package Contents



### Guide Overview

This Guide will take you step-by-step through several key setup features before using your Wireless 410 Bluetooth and Wireless USB Mini Card. This guide covers:

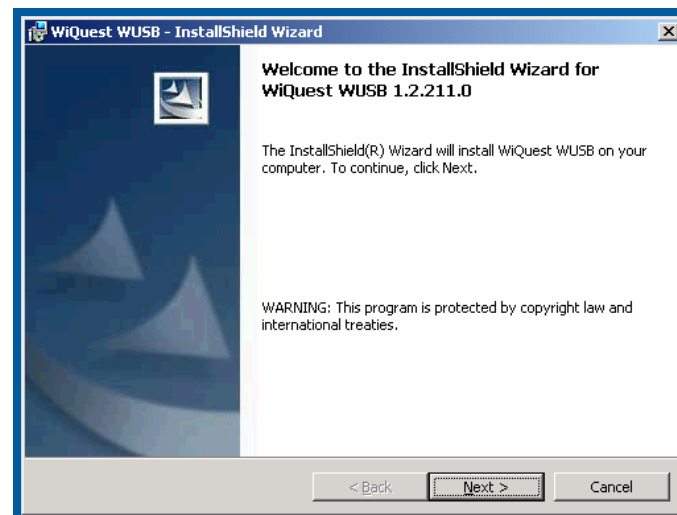
- Package Contents
- Hardware Diagrams
- Software Installation
- Driver installation for the Wireless 410 Mini Card
- Security Setup
- Firmware upgrade

### Wireless USB Mini Card



### Software Installation

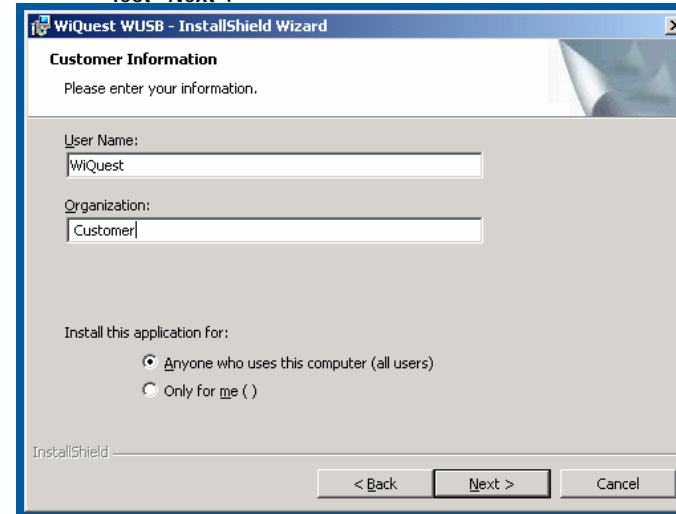
- 1 Before inserting your Wireless 410 Mini-card, insert the CD into your notebook PC. The installation will start automatically.
- 2 Select "Next" when you are prompted by the Welcome screen.



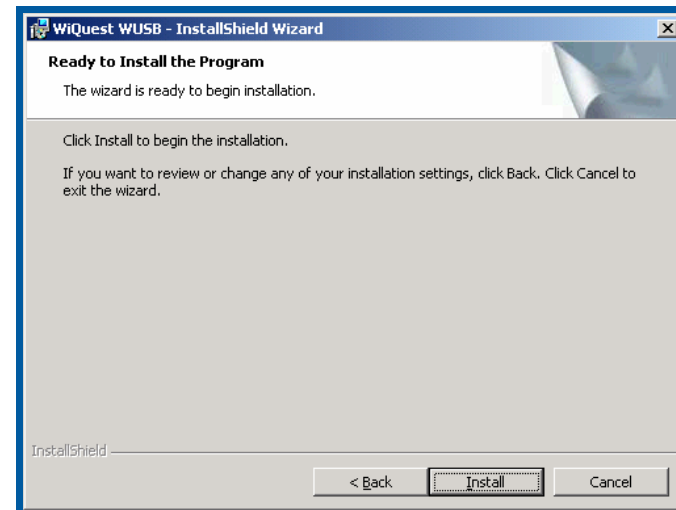
- 3 Select "I accept...", then "Next" when prompted to accept the terms of the License Agreement.



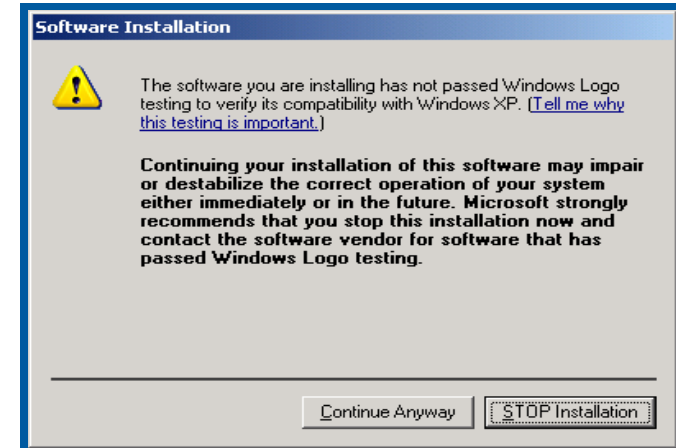
- 4 Enter the appropriate information as requested and select "Next".



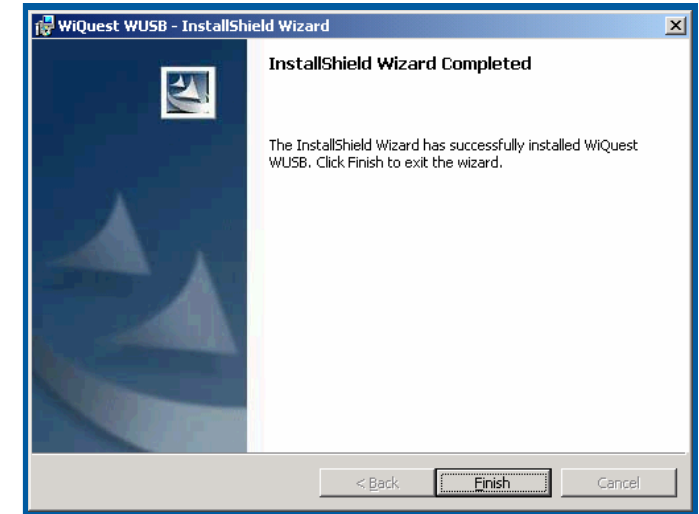
- 5 Select "Install" to begin the installation process.



- 6 When prompted select "Continue Anyway". Select "Finish".



- 7 Select "Finish".



### Next Steps

Now that the basic software is installed, the next steps will guide you through the simple procedure to load the drivers for the Wireless 410 Bluetooth and Wireless USB Mini Card.

For future updates, the software will automatically detect if the drivers need to be loaded. For future updates, you should always perform the firmware updates as described in this document.

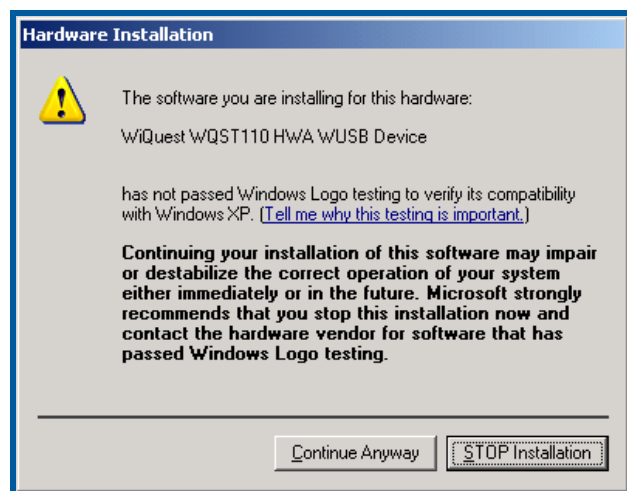
### Wireless USB Mini-card Driver Install

- 8 Insert the Wireless 410 Mini Card into the PC WPAN slot. Connect the blue antenna cable to the connector on the Wireless USB Mini Card. Place the cover and tighten the screws.



9 The WiQuest Control Center (WiCC) application will detect the Wireless USB Mini Card as new hardware. A pop-up notification will be presented in the bottom, right corner of your desktop.

10 WiCC will automatically start the driver install. Select "Continue Anyway" for each of the 4 drivers.



11 WiCC will present a bubble message when the installation of the driver for the Mini Card is complete.

### FCC Statement

#### DECLARATION OF CONFORMITY WITH FCC RULES FOR ELECTROMAGNETIC COMPATIBILITY

We, WiQuest Communications, Inc., 915 Enterprise Blvd, Suite 200, Allen, TX 75013, declare under our sole responsibility that the product FCC ID: QDS-BRCM1035 to which this declaration relates: Complies with Part 15 of the FCC Rules. Operation is subject to the following two conditions: (1) this device may not cause harmful interference, and (2) this device must accept any interference received, including interference that may cause undesired operation.

This equipment has been tested and found to comply with the limits for a Class B digital device, pursuant to Part 15 of the FCC rules. These limits are designed to provide reasonable protection against harmful interference in a residential installation. This equipment generates, uses, and can radiate radio frequency energy and, if not installed and used in accordance with the instructions, may cause harmful interference to radio communications. However, there is no guarantee that interference will not occur in a particular installation. user's authority to operate the equipment.

If this equipment does cause harmful interference to radio or television reception, which can be determined by turning the equipment off and on, the user is encouraged to try to correct the interference by one or more of the following measures:

- Reorient or relocate the receiving antenna.
- Increase the separation between the equipment and receiver.
- Connect the equipment into an outlet on a circuit different from that to which the receiver is connected. • Consult the dealer or an experienced radio/TV technician for help.

Caution: Any changes or modifications not expressly approved by WiQuest Communications, Inc. could void the user's authority to operate the equipment.

### Operational Limitations

#### FCC 47 CFR Section 15.519 (a) (1)

A UWB device operating under the provisions of this section shall transmit only when it is sending information to an associated receiver. The UWB intentional radiator shall cease transmission within 10 seconds unless it receives an acknowledgement from the associated receiver that its transmission is being received. An acknowledgment of reception must continue to be received by the UWB intentional radiator at least every 10 seconds or the UWB device must cease transmitting.

#### FCC 47 CFR Section 15.519 (a) (2)

The use of antennas mounted on outdoor structures, *e.g.*, antennas mounted on the outside of a building or on a telephone pole, or any fixed outdoors infrastructure is prohibited. Antennas may be mounted only on the hand held UWB device.

#### FCC 47 CFR Section 15.519 (a) (3)

UWB devices operating under the provisions of this section may operate indoors or outdoors.

To comply with FCC RF exposure compliance requirements, this device must not be co-located or operating in conjunction with any other antenna or transmitter.

### FCC Label on the Wireless 410 Mini-Card



### Exterior FCC Label on the PC

IMPORTANT: Please remove the FCC label supplied with the kit and affix it to the bottom side of the Notebook.

