

## Appendix E – Dipole Calibration Data Sheets

# RF Exposure Lab, LLC

Calibration File No: CAL.20060202

## CERTIFICATE OF CALIBRATION

It is certified that the equipment identified below has been calibrated at RF Exposure Lab, LLC by qualified personnel following recognized procedures and using transfer standards traceable to NRC/NIST.

### Validation Dipole

Manufacturer: APREL Laboratories

Part Number: ALS-D-835-S-2

Frequency: 835 MHz

Serial No: RFE-274

Manufactured: 20 February 2004  
Calibrated: 16 February 2006

Calibrated By: Signature on File  
Jay Moulton – Technical Manager

Approved By: Signature on File  
Tamara Moulton – Quality Manager

Measurement Uncertainty:

Repeatability:	23%
Tissue Uncertainty:	3.2%
Network Analyzer:	25%



## RF EXPOSURE LAB, LLC

2867 Progress Place, Suite 4D  
Escondido, CA 92029

Tel: (760) 737-3131  
FAX: (760) 737-9131

## Calibration Results Summary

The following results relate to the Calibrated Dipole and should be used as a quick reference for the user.

### Mechanical Dimensions

**Length:** 161.8 mm  
**Height:** 91.1 mm

### Electrical Specifications

#### Head

**SWR:** 1.1357 U  
**Return Loss:** -25.165 dB  
**Impedance:** 49.691  $\Omega$

### System Validation Results

Frequency	1 Gram	10 Gram
835 MHz	9.820	6.360

#### Body

**SWR:** 1.1539 U  
**Return Loss:** -23.122 dB  
**Impedance:** 51.514  $\Omega$

### System Validation Results

Frequency	1 Gram	10 Gram
835 MHz	9.072	5.944

## Head Measurement Conditions

The measurements were performed in the Uni-Phantom filled with head simulating liquid of the following electrical parameters at 835 MHz:

Relative Dielectricity	40.88	± 5%
Conductivity	0.88 mho/m	± 5%

The APREL Laboratories ALSAS system with a dosimetric E-field probe E-020 (SN:215, Conversion factor 5.49 at 835 MHz) was used for the measurements.

The dipole was mounted so that the dipole feed point was positioned below the center marking of the flat phantom and the dipole was oriented parallel to the body axis (the long side of the phantom). The standard measuring distance was 15mm from the dipole center to the solution surface.

The coarse grid with a grid spacing of 10mm was aligned with the dipole. The 5x5x8 fine cube was chosen for cube integration. The dipole input power (forward power) was 250mW ± 3%. The results are normalized to 1W input power.

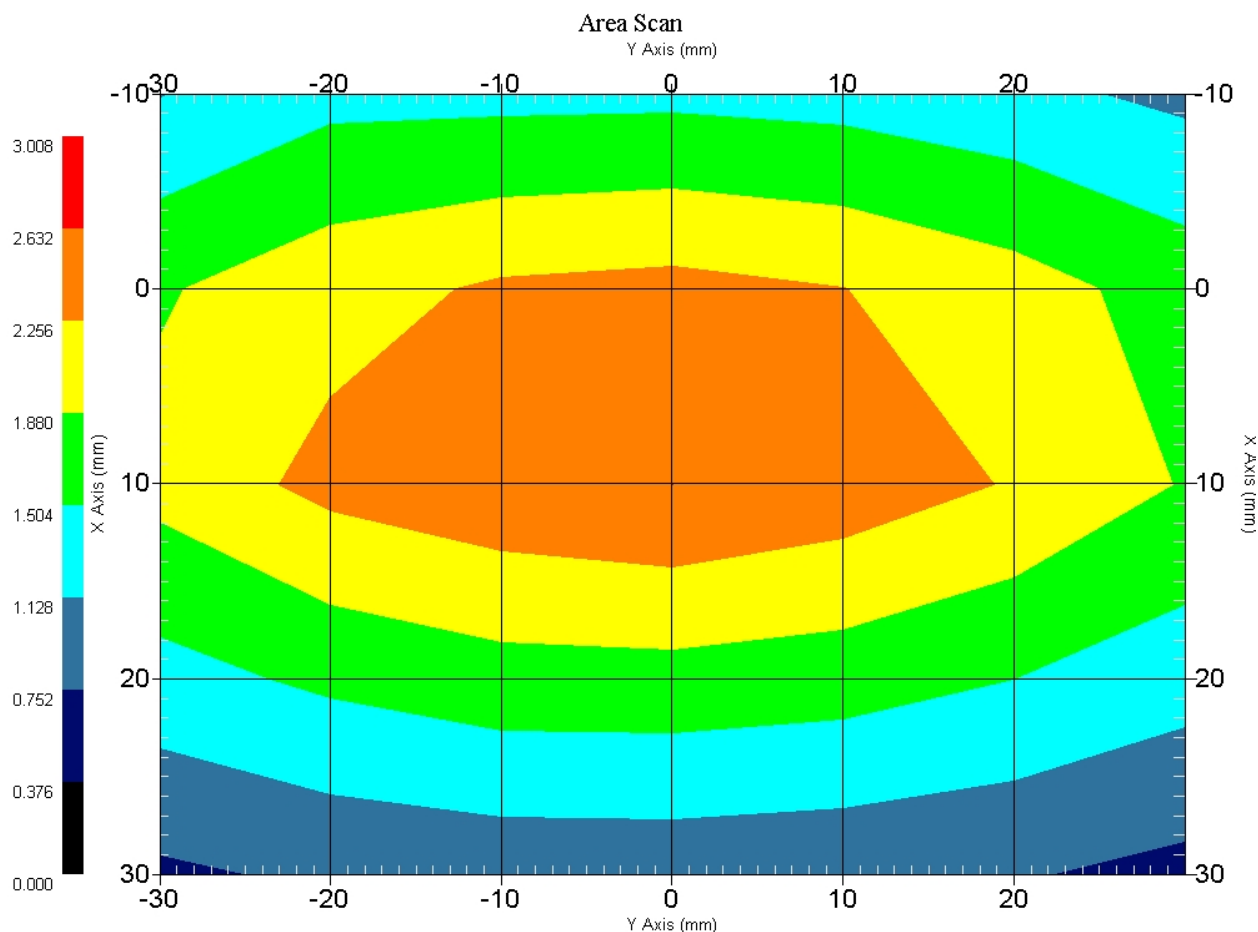
The laboratories environmental conditions were as follows during the calibration sequence.

Ambient Temperature of the Laboratory:	21 °C ± 1.0 °C
Temperature of the Tissue:	20 °C ± 1.0 °C
Relative Humidity:	42%

**SAR Measurement**

Standard SAR measurements were performed according to the measurement conditions described above. The results have been normalized to a dipole input power of 1W (forward power). The resulting averaged SAR values measured with the dosimetric probe E-020 SN:215 and applying the advanced extrapolation are:

Averaged over 1 cm<sup>3</sup> (1 g) of tissue: 9.820 mW/g ± 19.0% (k=2)<sup>1</sup>  
 Averaged over 10 cm<sup>3</sup> (10 g) of tissue: 6.360 mW/g ± 18.5% (k=2)<sup>1</sup>



1 gram SAR value : 2.455 W/kg  
 10 gram SAR value : 1.590 W/kg  
 Area Scan Peak SAR : 2.632 W/kg  
 Zoom Scan Peak SAR : 3.693 W/kg

<sup>1</sup> validation uncertainty

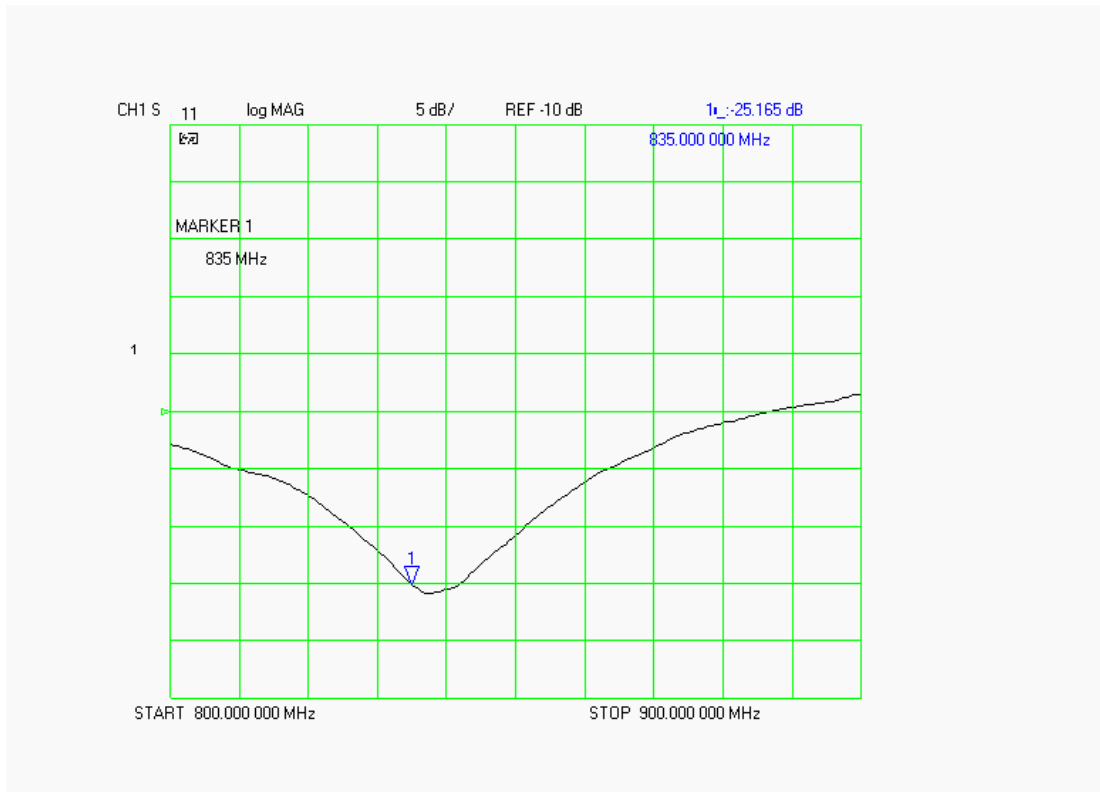
### Dipole Impedance and Return Loss

The impedance was measured at the SMA connector with a network analyzer. The dipole was positioned at the flat phantom sections according to measurement conditions stated above during impedance measurements.

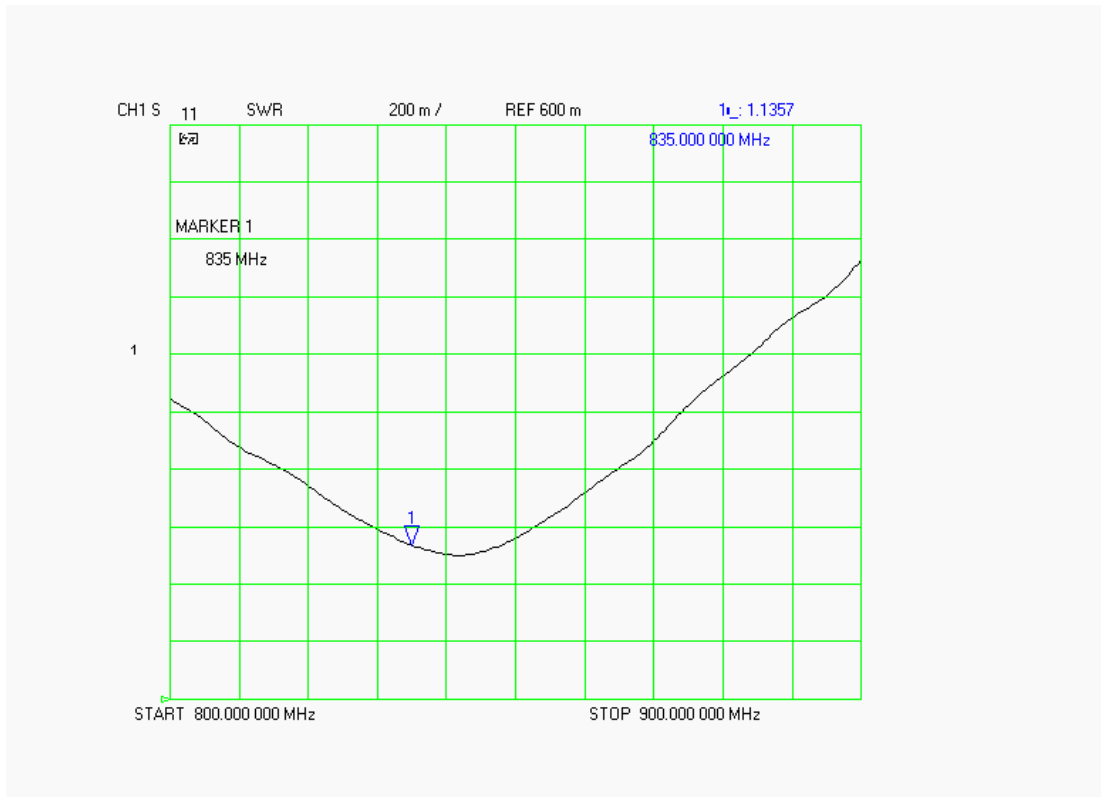
Test	Result
S11 R/L	-25.165 dB
SWR	1.1357 U
Impedance	49.691 $\Omega$

The following graphs are the results as displayed on the Vector Network Analyzer.

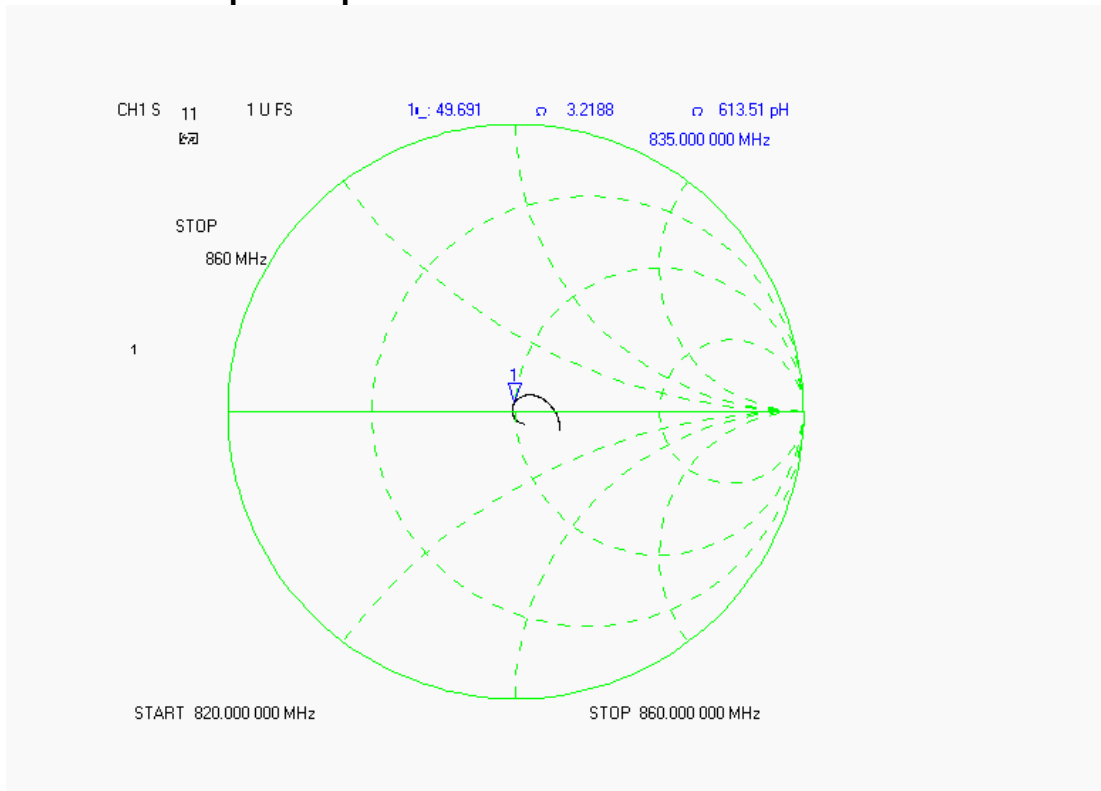
### S11 Parameter Return Loss



### SWR



### Smith Chart Dipole Impedance



## Body Measurement Conditions

The measurements were performed in the Uni-Phantom filled with body simulating liquid of the following electrical parameters at 835 MHz:

Relative Dielectricity	54.03	± 5%
Conductivity	0.96 mho/m	± 5%

The APREL Laboratories ALSAS system with a dosimetric E-field probe E-020 (SN:215, Conversion factor 6.07 at 835 MHz) was used for the measurements.

The dipole was mounted so that the dipole feed point was positioned below the center marking of the flat phantom and the dipole was oriented parallel to the body axis (the long side of the phantom). The standard measuring distance was 15mm from the dipole center to the solution surface.

The coarse grid with a grid spacing of 10mm was aligned with the dipole. The 5x5x8 fine cube was chosen for cube integration. The dipole input power (forward power) was 250mW ± 3%. The results are normalized to 1W input power.

The laboratories environmental conditions were as follows during the calibration sequence.

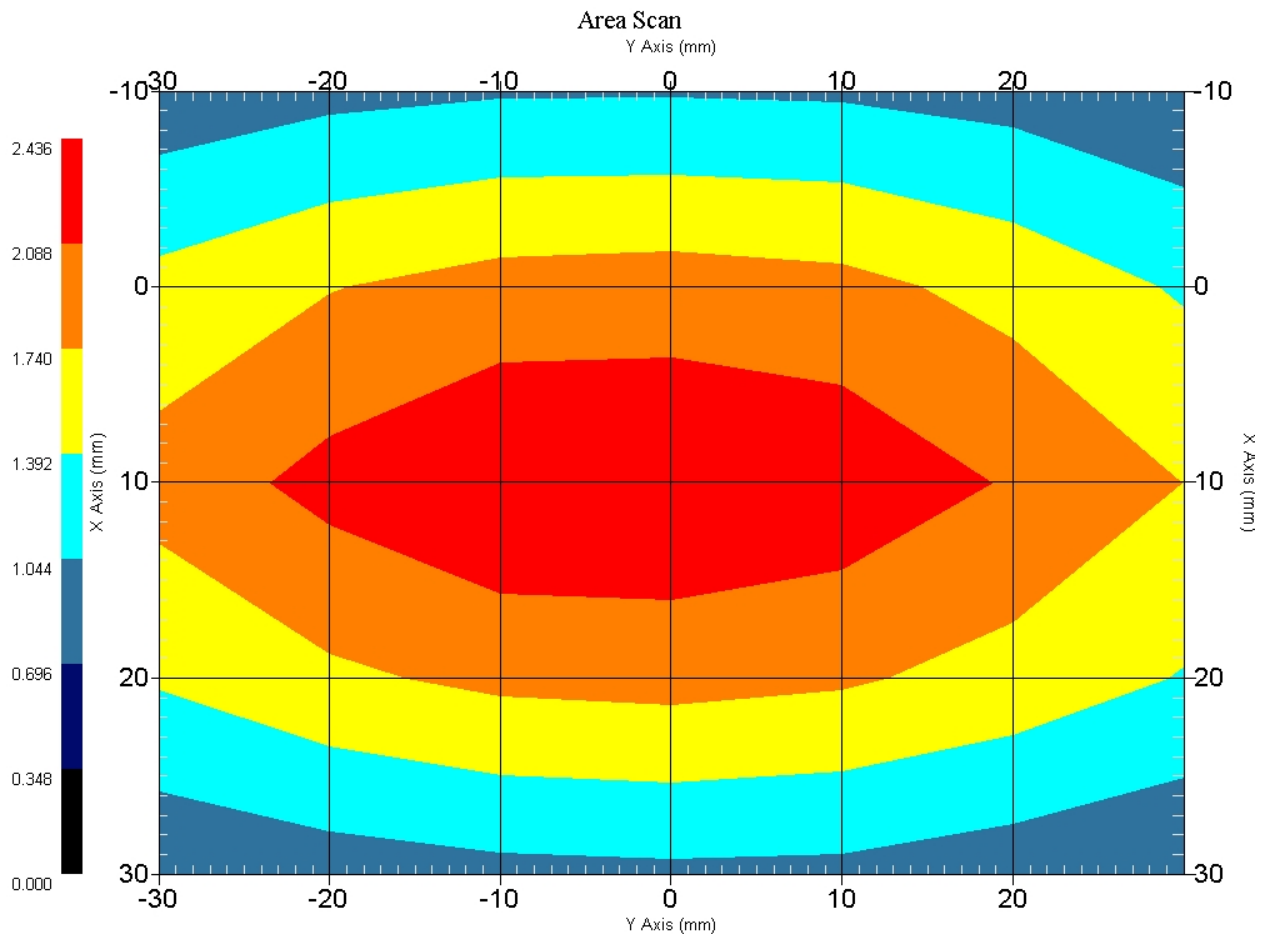
Ambient Temperature of the Laboratory:	22 °C ± 1.0 °C
Temperature of the Tissue:	20 °C ± 1.0 °C
Relative Humidity:	42%



**SAR Measurement**

Standard SAR measurements were performed according to the measurement conditions described above. The results have been normalized to a dipole input power of 1W (forward power). The resulting averaged SAR values measured with the dosimetric probe E-020 SN:215 and applying the advanced extrapolation are:

Averaged over 1 cm<sup>3</sup> (1 g) of tissue: 9.072 mW/g ± 19.1% (k=2)<sup>1</sup>  
 Averaged over 10 cm<sup>3</sup> (10 g) of tissue: 5.944 mW/g ± 18.6% (k=2)<sup>1</sup>



1 gram SAR value : 2.268 W/kg  
 10 gram SAR value : 1.486 W/kg  
 Area Scan Peak SAR : 2.435 W/kg  
 Zoom Scan Peak SAR : 3.413 W/kg

<sup>1</sup> validation uncertainty

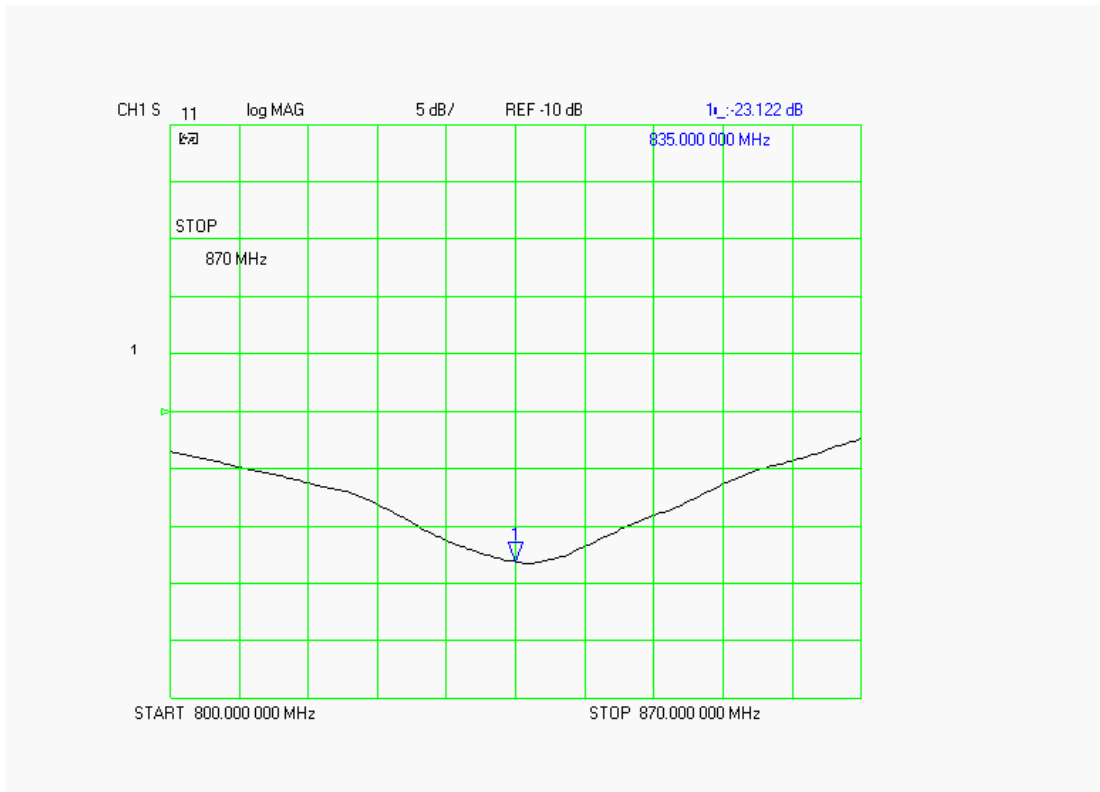
### Dipole Impedance and Return Loss

The impedance was measured at the SMA connector with a network analyzer. The dipole was positioned at the flat phantom sections according to measurement conditions stated above during impedance measurements.

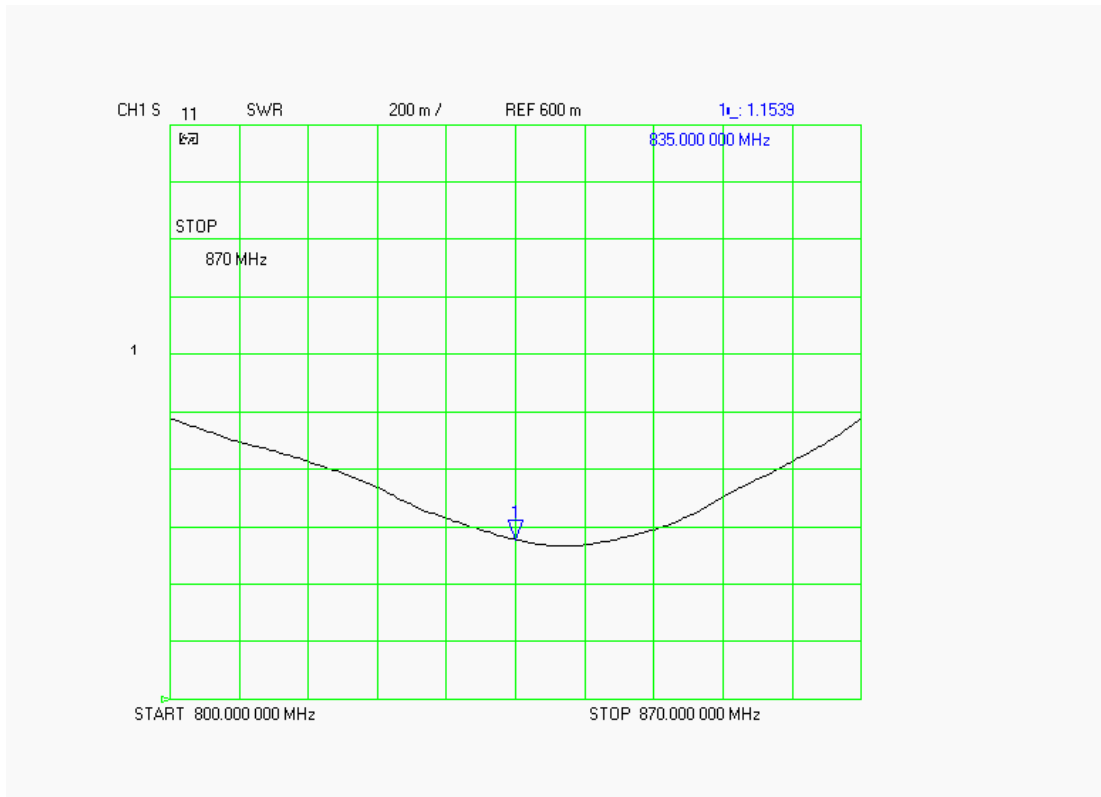
Test	Result
S11 R/L	-23.122 dB
SWR	1.1539 U
Impedance	51.514 $\Omega$

The following graphs are the results as displayed on the Vector Network Analyzer.

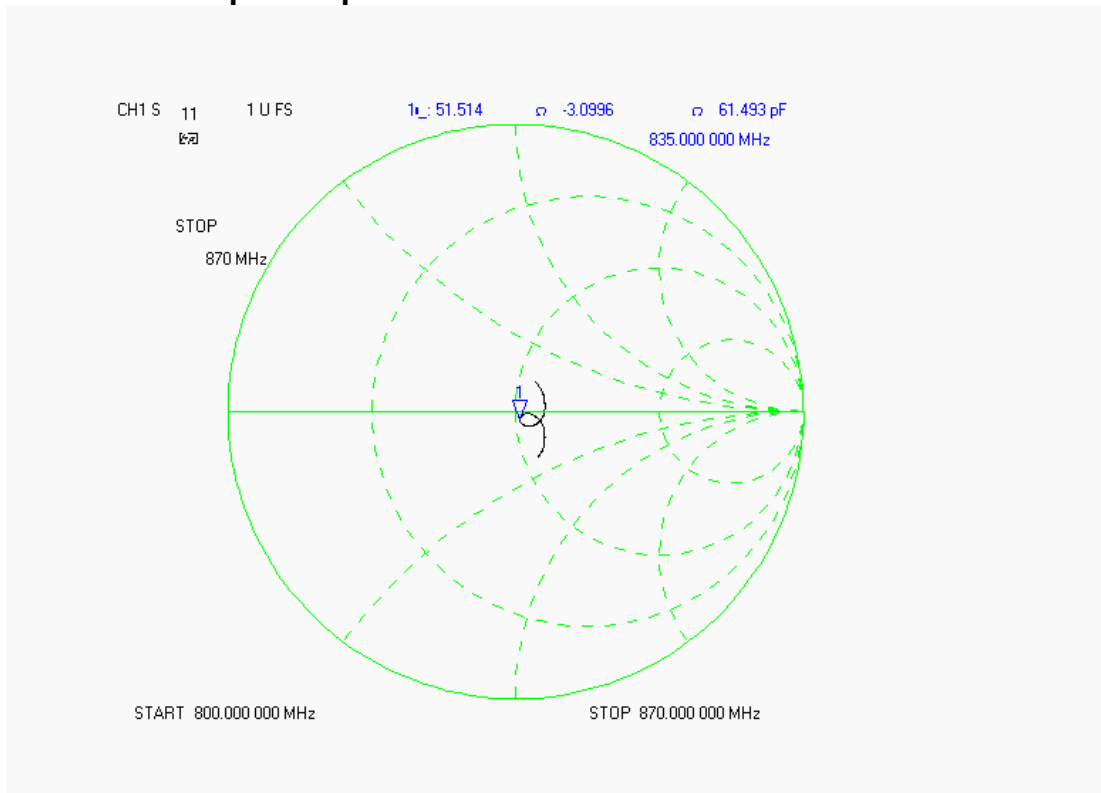
#### S11 Parameter Return Loss



### SWR



### Smith Chart Dipole Impedance



## Test Equipment List

The test equipment used during Dipole Calibration, manufacturer, model number and, current calibration status are listed and located on the RF Exposure Lab, LLC system computer C:\Test Equipment\Calibration Equipment\Instrument List February 2006.

## RF Exposure Lab, LLC

Calibration File No: CAL.20060201

# CERTIFICATE OF CALIBRATION

It is certified that the equipment identified below has been calibrated at RF Exposure Lab, LLC by qualified personnel following recognized procedures and using transfer standards traceable to NRC/NIST.

### Validation Dipole

Manufacturer: APREL Laboratories

Part Number: ALS-D-1900-S-2

Frequency: 1.9 GHz

Serial No: RFE-277

Manufactured: 20 February 2004  
Calibrated: 15 February 2006

Calibrated By: Signature on File  
Jay Moulton – Technical Manager

Approved By: Signature on File  
Tamara Moulton – Quality Manager

Measurement Uncertainty:

Repeatability:	23%
Tissue Uncertainty:	3.2%
Network Analyzer:	25%



## RF EXPOSURE LAB, LLC

2867 Progress Place, Suite 4D  
Escondido, CA 92029

Tel: (760) 737-3131  
FAX: (760) 737-9131

## Calibration Results Summary

The following results relate to the Calibrated Dipole and should be used as a quick reference for the user.

### Mechanical Dimensions

**Length:** 68.0 mm  
**Height:** 37.5 mm

### Electrical Specifications

#### Head

**SWR:** 1.0776 U  
**Return Loss:** -30.532 dB  
**Impedance:** 49.666  $\Omega$

### System Validation Results

Frequency	1 Gram	10 Gram
1.9 GHz	40.636	20.424

#### Body

**SWR:** 1.0927 U  
**Return Loss:** -33.755 dB  
**Impedance:** 53.652  $\Omega$

### System Validation Results

Frequency	1 Gram	10 Gram
1.9 GHz	41.336	21.464

## Head Measurement Conditions

The measurements were performed in the Uni-Phantom filled with head simulating liquid of the following electrical parameters at 1900 MHz:

Relative Dielectricity	39.24	± 5%
Conductivity	1.43 mho/m	± 5%

The APREL Laboratories ALSAS system with a dosimetric E-field probe E-020 (SN:215, Conversion factor 4.5 at 1900 MHz) was used for the measurements.

The dipole was mounted so that the dipole feed point was positioned below the center marking of the flat phantom and the dipole was oriented parallel to the body axis (the long side of the phantom). The standard measuring distance was 10mm from the dipole center to the solution surface.

The coarse grid with a grid spacing of 10mm was aligned with the dipole. The 5x5x8 fine cube was chosen for cube integration. The dipole input power (forward power) was 250mW ± 3%. The results are normalized to 1W input power.

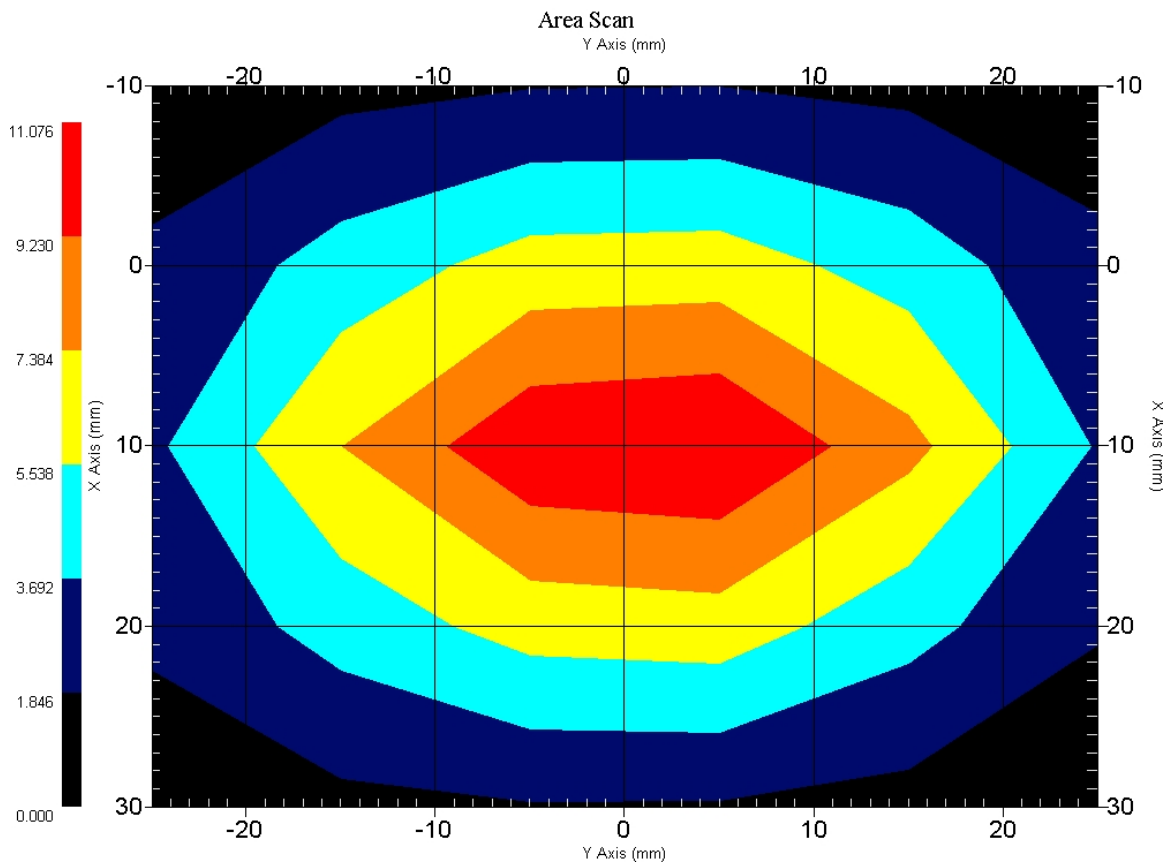
The laboratories environmental conditions were as follows during the calibration sequence.

Ambient Temperature of the Laboratory:	22 °C ± 1.0 °C
Temperature of the Tissue:	20 °C ± 1.0 °C
Relative Humidity:	41%

**SAR Measurement**

Standard SAR measurements were performed according to the measurement conditions described above. The results have been normalized to a dipole input power of 1W (forward power). The resulting averaged SAR values measured with the dosimetric probe E-020 SN:215 and applying the advanced extrapolation are:

Averaged over 1 cm<sup>3</sup> (1 g) of tissue: 40.636 mW/g ± 19.2% (k=2)<sup>1</sup>  
 Averaged over 10 cm<sup>3</sup> (10 g) of tissue: 20.424 mW/g ± 18.8% (k=2)<sup>1</sup>



1 gram SAR value : 10.159 W/kg  
 10 gram SAR value : 5.106 W/kg  
 Area Scan Peak SAR : 11.075 W/kg  
 Zoom Scan Peak SAR : 17.815 W/kg

<sup>1</sup> validation uncertainty



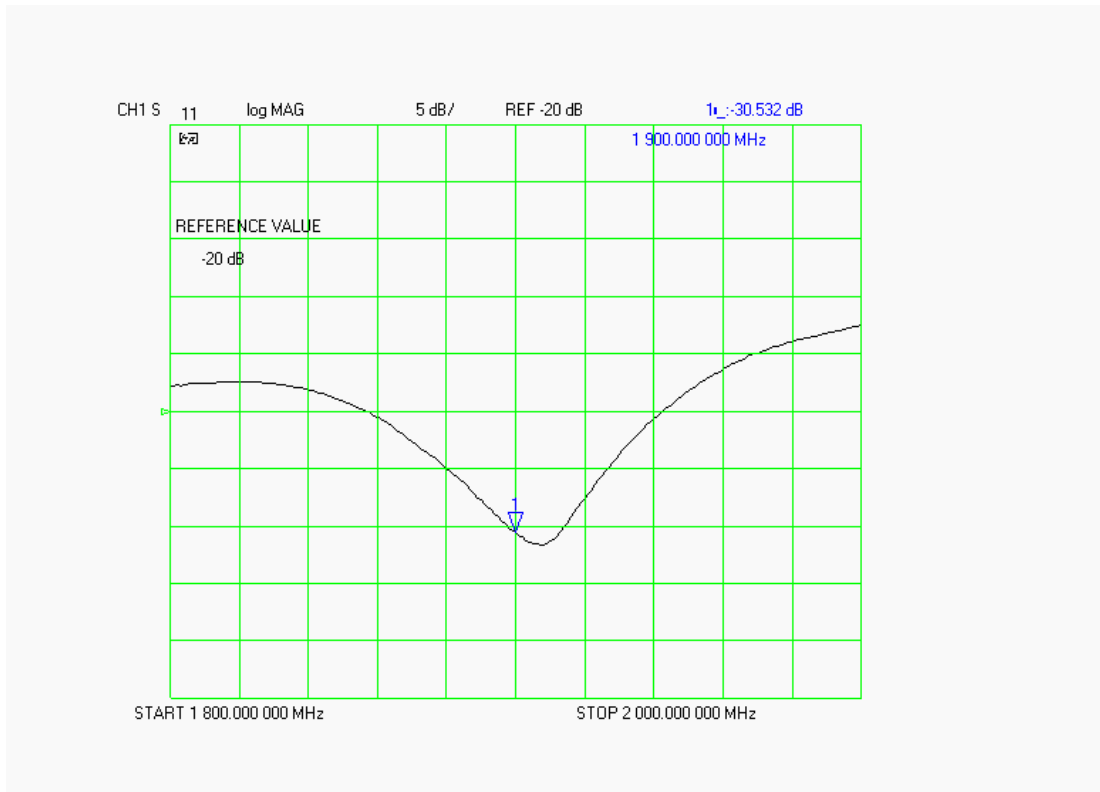
### Dipole Impedance and Return Loss

The impedance was measured at the SMA connector with a network analyzer. The dipole was positioned at the flat phantom sections according to measurement conditions stated above during impedance measurements.

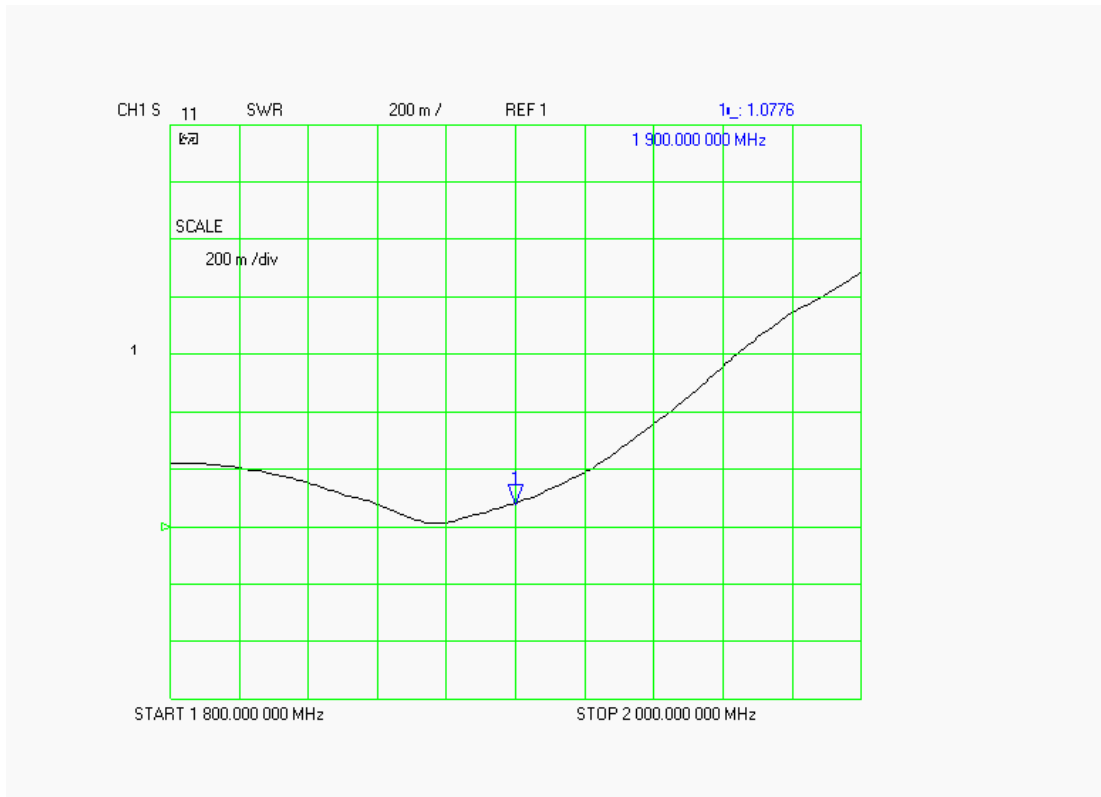
Test	Result
S11 R/L	-30.532 dB
SWR	1.0776 U
Impedance	49.666 $\Omega$

The following graphs are the results as displayed on the Vector Network Analyzer.

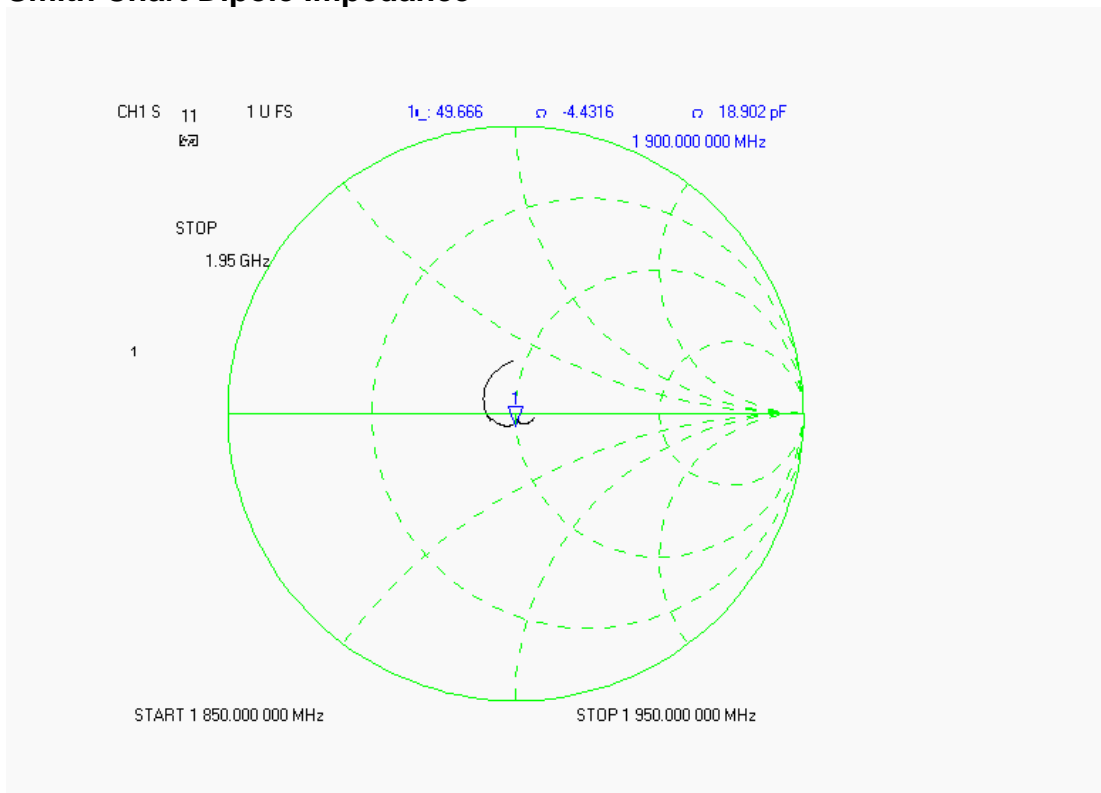
### S11 Parameter Return Loss



### SWR



### Smith Chart Dipole Impedance



## Body Measurement Conditions

The measurements were performed in the Uni-Phantom filled with body simulating liquid of the following electrical parameters at 1900 MHz:

Relative Dielectricity	52.91	± 5%
Conductivity	1.49 mho/m	± 5%

The APREL Laboratories ALSAS system with a dosimetric E-field probe E-020 (SN:215, Conversion factor 3.8 at 1900 MHz) was used for the measurements.

The dipole was mounted so that the dipole feed point was positioned below the center marking of the flat phantom and the dipole was oriented parallel to the body axis (the long side of the phantom). The standard measuring distance was 10mm from the dipole center to the solution surface.

The coarse grid with a grid spacing of 10mm was aligned with the dipole. The 5x5x8 fine cube was chosen for cube integration. The dipole input power (forward power) was 250mW ± 3%. The results are normalized to 1W input power.

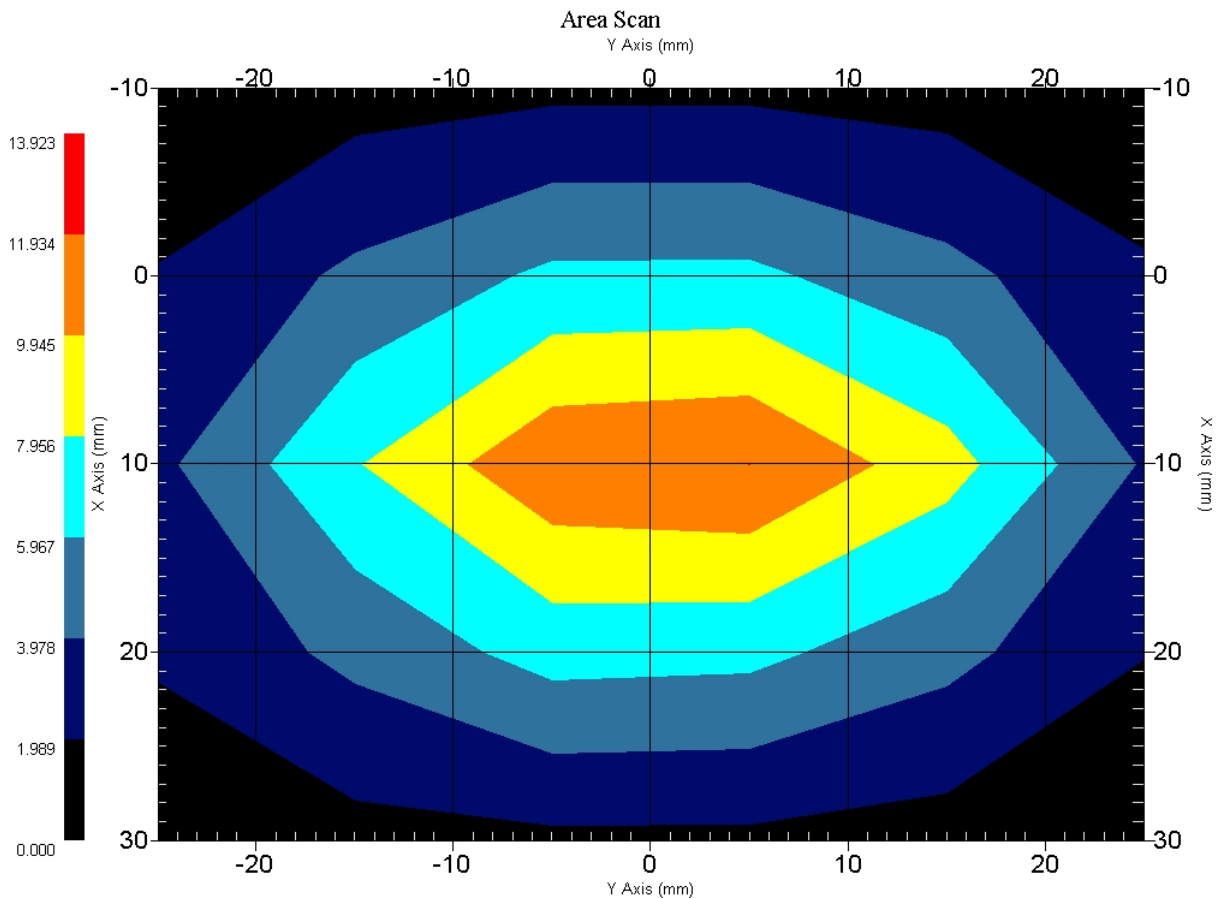
The laboratories environmental conditions were as follows during the calibration sequence.

Ambient Temperature of the Laboratory:	23 °C ± 1.0 °C
Temperature of the Tissue:	20 °C ± 1.0 °C
Relative Humidity:	44%

**SAR Measurement**

Standard SAR measurements were performed according to the measurement conditions described above. The results have been normalized to a dipole input power of 1W (forward power). The resulting averaged SAR values measured with the dosimetric probe E-020 SN:215 and applying the advanced extrapolation are:

Averaged over 1 cm<sup>3</sup> (1 g) of tissue:                    41.336 mW/g ± 18.9% (k=2)<sup>1</sup>  
 Averaged over 10 cm<sup>3</sup> (10 g) of tissue:                    21.464 mW/g ± 18.5% (k=2)<sup>1</sup>



1 gram SAR value : 10.334 W/kg  
 10 gram SAR value : 5.366 W/kg  
 Area Scan Peak SAR : 11.936 W/kg  
 Zoom Scan Peak SAR : 18.616 W/kg

<sup>1</sup> validation uncertainty

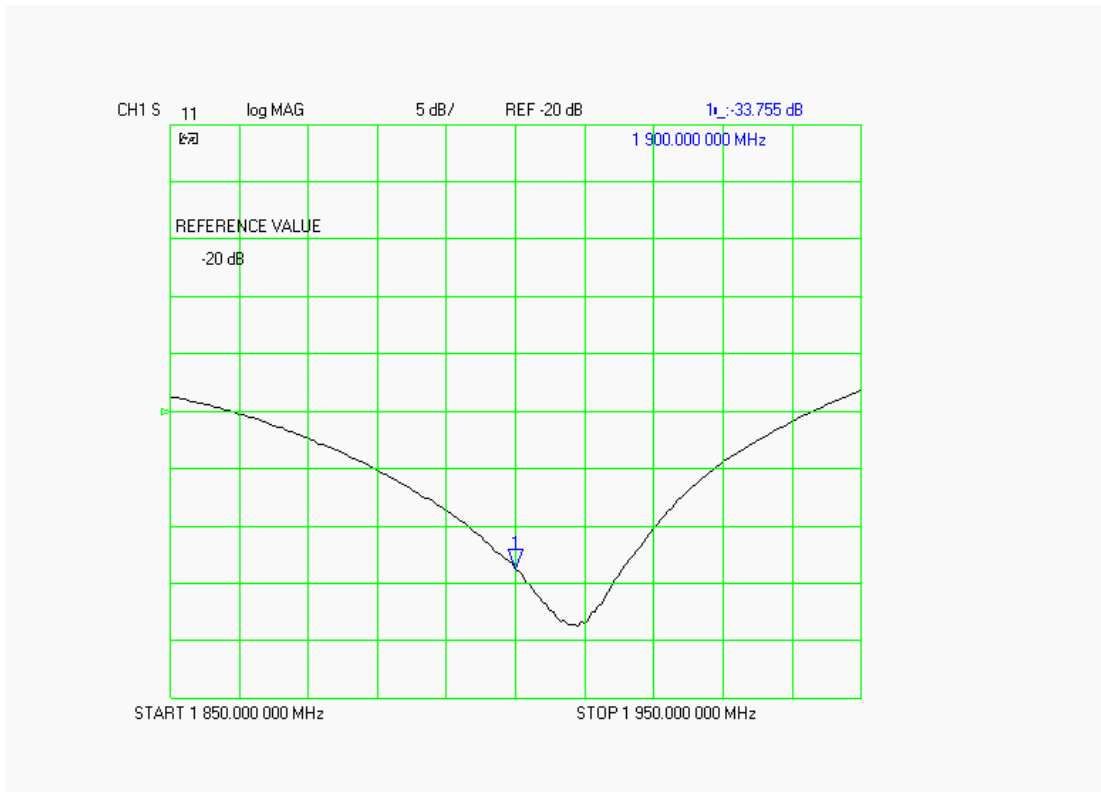
### Dipole Impedance and Return Loss

The impedance was measured at the SMA connector with a network analyzer. The dipole was positioned at the flat phantom sections according to measurement conditions stated above during impedance measurements.

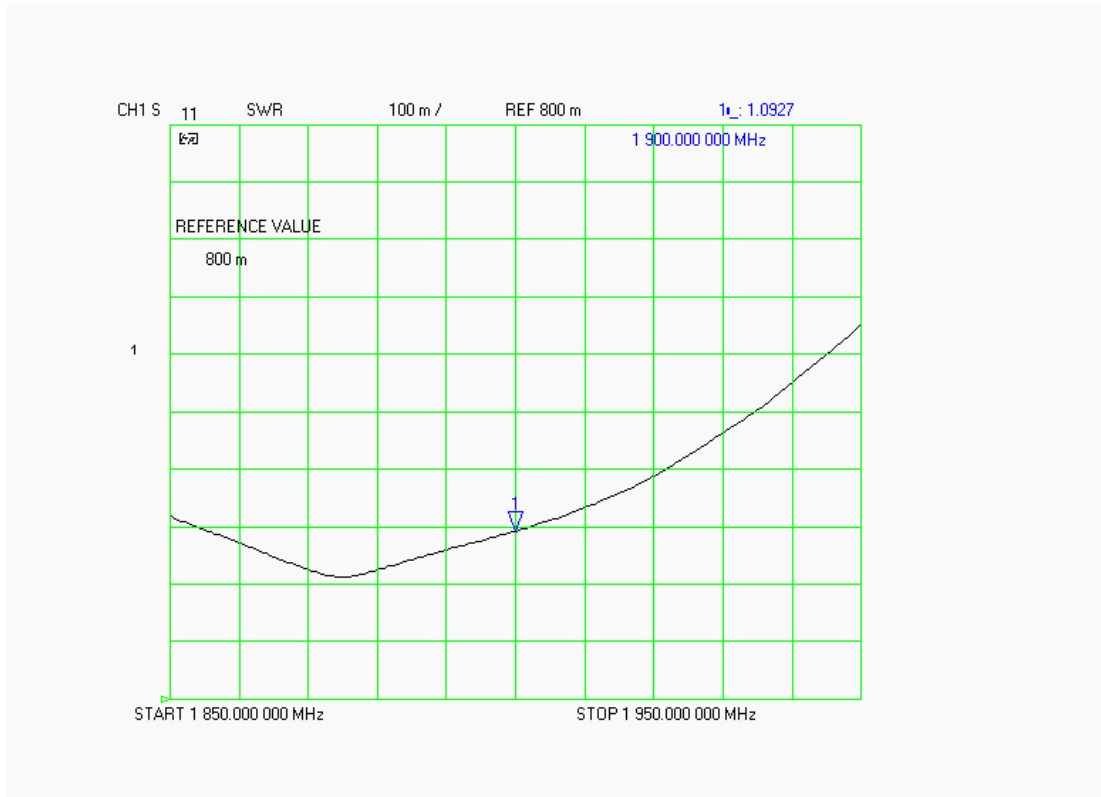
Test	Result
S11 R/L	-33.755 dB
SWR	1.0927 U
Impedance	53.652 $\Omega$

The following graphs are the results as displayed on the Vector Network Analyzer.

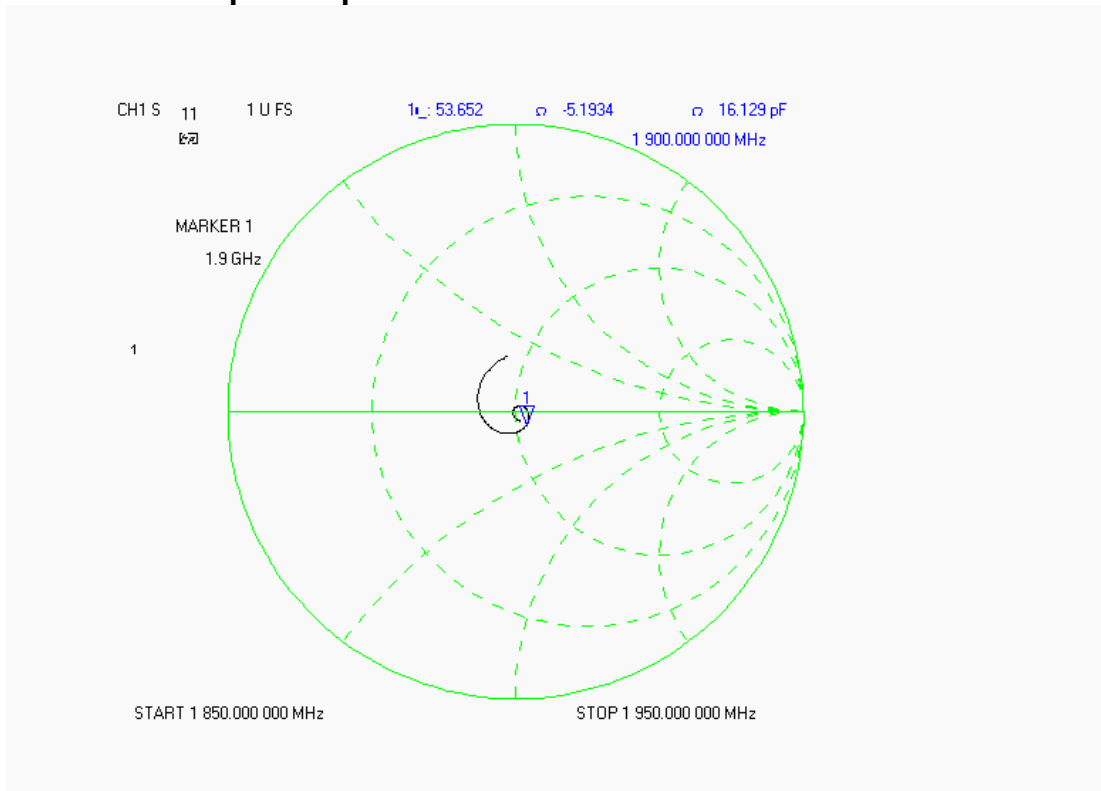
### S11 Parameter Return Loss



### SWR



### Smith Chart Dipole Impedance



## Test Equipment List

The test equipment used during Dipole Calibration, manufacturer, model number and, current calibration status are listed and located on the RF Exposure Lab, LLC system computer C:\Test Equipment\Calibration Equipment\Instrument List February 2006.

## RF Exposure Lab, LLC

Calibration File No: CAL.20060203

# CERTIFICATE OF CALIBRATION

It is certified that the equipment identified below has been calibrated at RF Exposure Lab, LLC by qualified personnel following recognized procedures and using transfer standards traceable to NRC/NIST.

### Validation Dipole

Manufacturer: APREL Laboratories

Part Number: ALS-D-2450-S-2

Frequency: 2.4 GHz

Serial No: RFE-278

Manufactured: 20 February 2004  
Calibrated: 17 February 2006

Calibrated By: Signature on File  
Jay Moulton – Technical Manager

Approved By: Signature on File  
Tamara Moulton – Quality Manager

Measurement Uncertainty:

Repeatability:	23%
Tissue Uncertainty:	3.2%
Network Analyzer:	25%



## RF EXPOSURE LAB, LLC

2867 Progress Place, Suite 4D  
Escondido, CA 92029

Tel: (760) 737-3131  
FAX: (760) 737-9131



## Calibration Results Summary

The following results relate to the Calibrated Dipole and should be used as a quick reference for the user.

### Mechanical Dimensions

**Length:** 51.5 mm  
**Height:** 30.5 mm

### Electrical Specifications

#### Head

**SWR:** 1.0994 U  
**Return Loss:** -28.139 dB  
**Impedance:** 53.471  $\Omega$

### System Validation Results

Frequency	1 Gram	10 Gram
2.45 GHz	52.920	26.370

#### Body

**SWR:** 1.1373 U  
**Return Loss:** -31.923 dB  
**Impedance:** 53.338  $\Omega$

### System Validation Results

Frequency	1 Gram	10 Gram
2.45 GHz	54.230	24.880

## Head Measurement Conditions

The measurements were performed in the Uni-Phantom filled with head simulating liquid of the following electrical parameters at 2450 MHz:

Relative Dielectricity	39.63	± 5%
Conductivity	1.82 mho/m	± 5%

The APREL Laboratories ALSAS system with a dosimetric E-field probe E-020 (SN:215, Conversion factor 4.6 at 2450 MHz) was used for the measurements.

The dipole was mounted so that the dipole feed point was positioned below the center marking of the flat phantom and the dipole was oriented parallel to the body axis (the long side of the phantom). The standard measuring distance was 10mm from the dipole center to the solution surface.

The coarse grid with a grid spacing of 10mm was aligned with the dipole. The 5x5x8 fine cube was chosen for cube integration. The dipole input power (forward power) was 100mW ± 3%. The results are normalized to 1W input power.

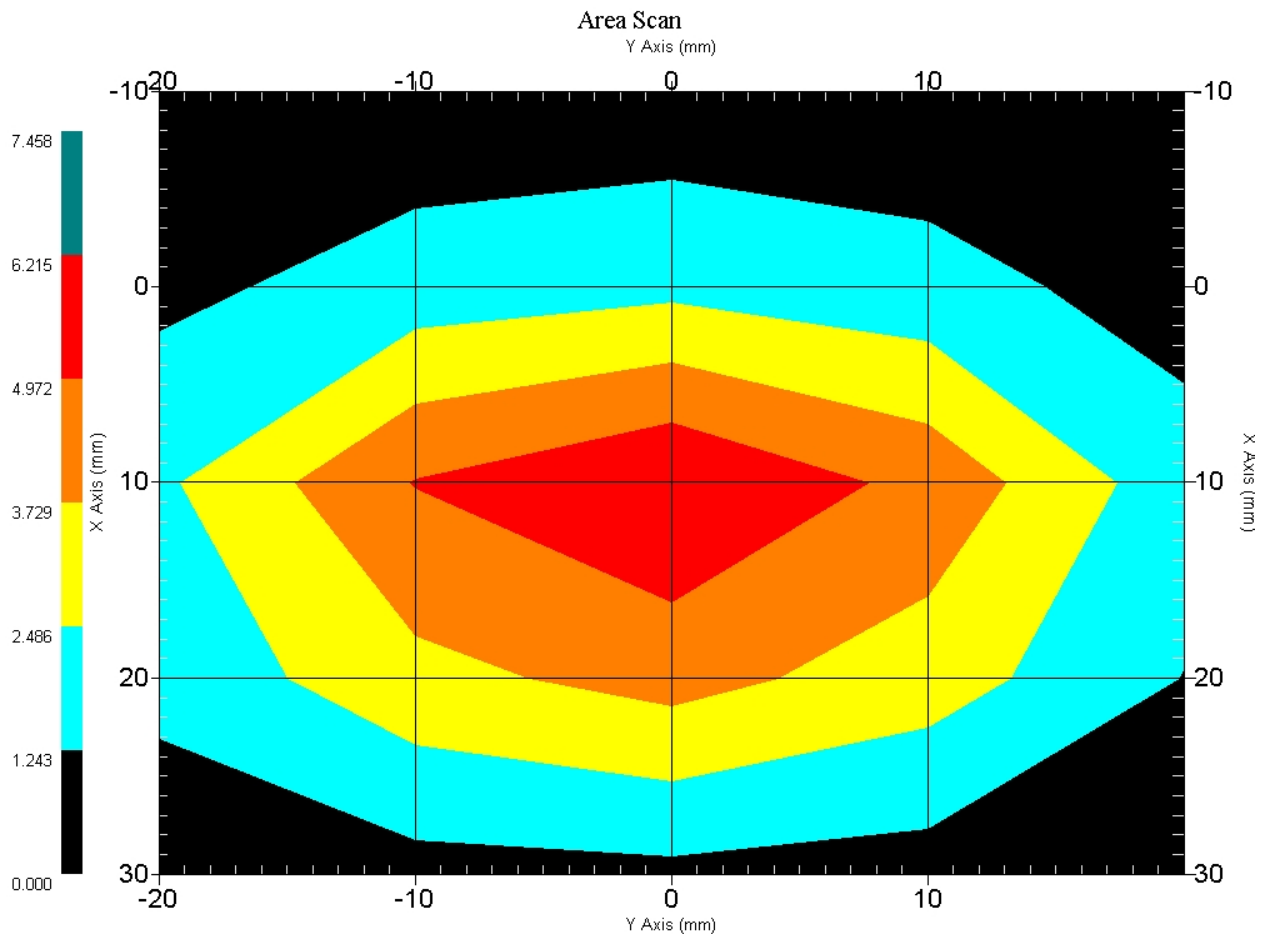
The laboratories environmental conditions were as follows during the calibration sequence.

Ambient Temperature of the Laboratory:	23 °C ± 1.0 °C
Temperature of the Tissue:	20 °C ± 1.0 °C
Relative Humidity:	42%

**SAR Measurement**

Standard SAR measurements were performed according to the measurement conditions described above. The results have been normalized to a dipole input power of 1W (forward power). The resulting averaged SAR values measured with the dosimetric probe E-020 SN:215 and applying the advanced extrapolation are:

Averaged over 1 cm<sup>3</sup> (1 g) of tissue: 52.920 mW/g ± 19.7% (k=2)<sup>1</sup>  
 Averaged over 10 cm<sup>3</sup> (10 g) of tissue: 26.370 mW/g ± 19.4% (k=2)<sup>1</sup>



1 gram SAR value : 5.292 W/kg  
 10 gram SAR value : 2.637 W/kg  
 Area Scan Peak SAR : 6.215 W/kg  
 Zoom Scan Peak SAR : 10.080 W/kg

<sup>1</sup> validation uncertainty

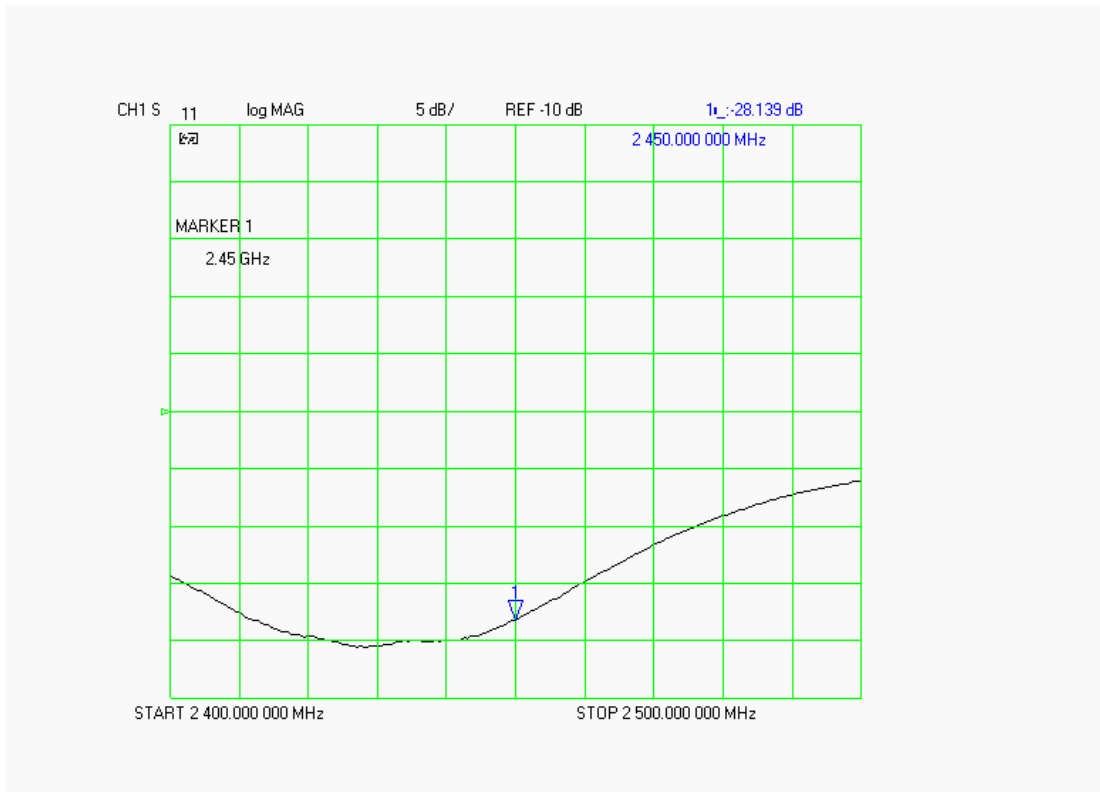
### Dipole Impedance and Return Loss

The impedance was measured at the SMA connector with a network analyzer. The dipole was positioned at the flat phantom sections according to measurement conditions stated above during impedance measurements.

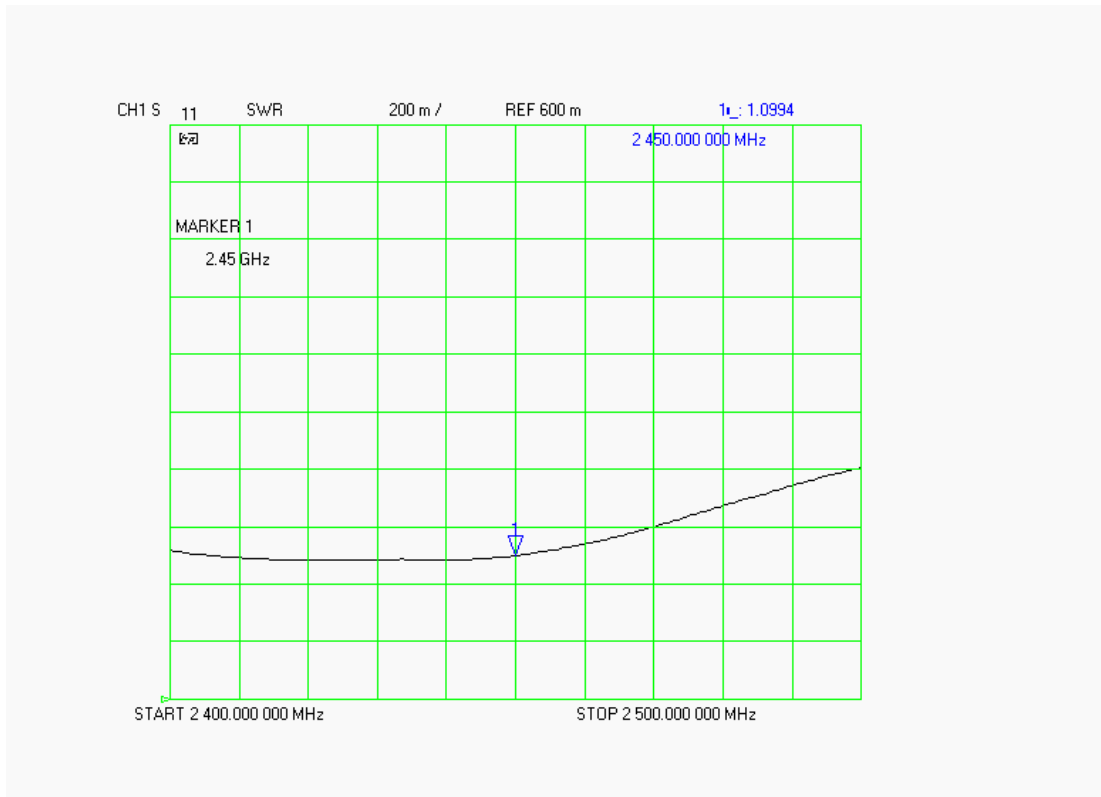
Test	Result
S11 R/L	-28.139 dB
SWR	1.0994 U
Impedance	53.471 $\Omega$

The following graphs are the results as displayed on the Vector Network Analyzer.

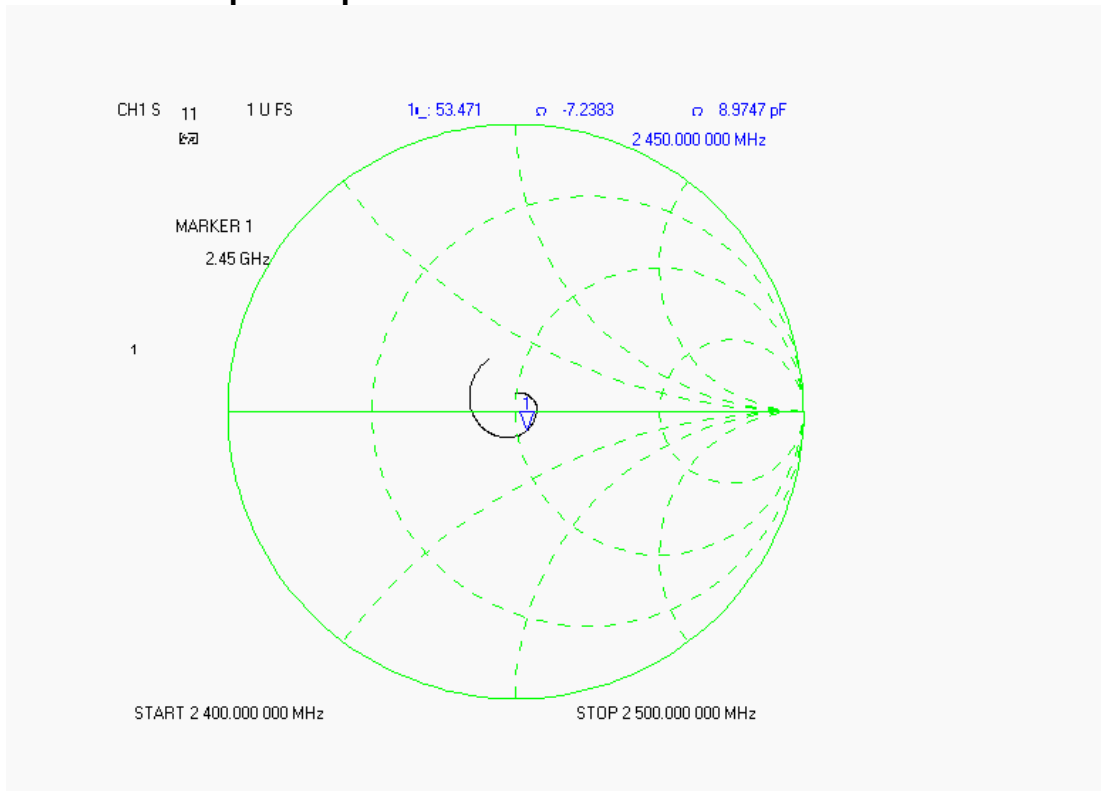
### S11 Parameter Return Loss



### SWR



### Smith Chart Dipole Impedance



## Body Measurement Conditions

The measurements were performed in the Uni-Phantom filled with body simulating liquid of the following electrical parameters at 2450 MHz:

Relative Dielectricity	51.09	± 5%
Conductivity	1.96 mho/m	± 5%

The APREL Laboratories ALSAS system with a dosimetric E-field probe E-020 (SN:215, Conversion factor 4.6 at 2450 MHz) was used for the measurements.

The dipole was mounted so that the dipole feed point was positioned below the center marking of the flat phantom and the dipole was oriented parallel to the body axis (the long side of the phantom). The standard measuring distance was 10mm from the dipole center to the solution surface.

The coarse grid with a grid spacing of 10mm was aligned with the dipole. The 5x5x8 fine cube was chosen for cube integration. The dipole input power (forward power) was 100mW ± 3%. The results are normalized to 1W input power.

The laboratories environmental conditions were as follows during the calibration sequence.

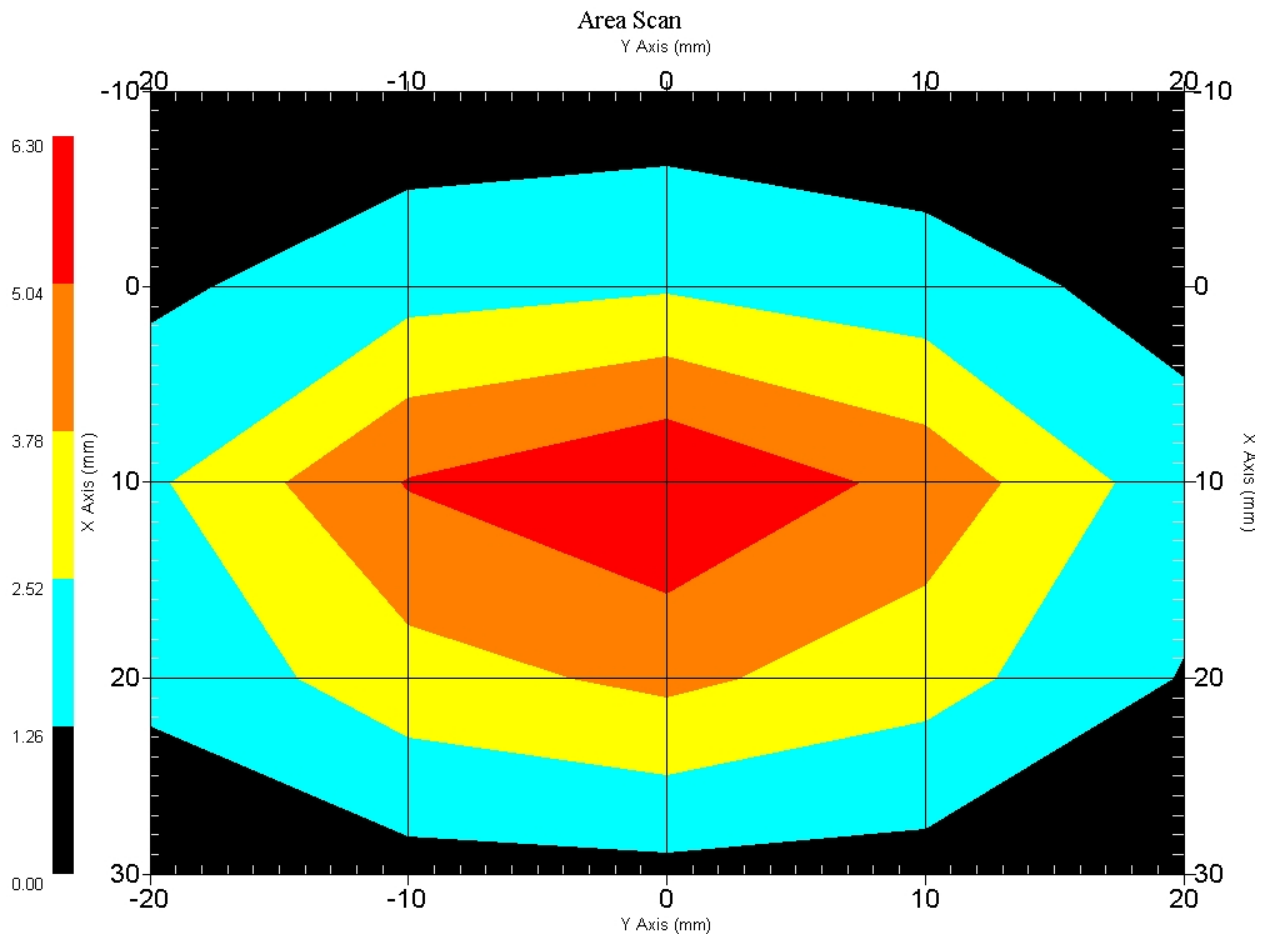
Ambient Temperature of the Laboratory:	20 °C ± 1.0 °C
Temperature of the Tissue:	20 °C ± 1.0 °C
Relative Humidity:	43%

**SAR Measurement**

Standard SAR measurements were performed according to the measurement conditions described above. The results have been normalized to a dipole input power of 1W (forward power). The resulting averaged SAR values measured with the dosimetric probe E-020 SN:215 and applying the advanced extrapolation are:

Averaged over 1 cm<sup>3</sup> (1 g) of tissue: 54.230 mW/g ± 18.8% (k=2)<sup>1</sup>

Averaged over 10 cm<sup>3</sup> (10 g) of tissue: 24.880 mW/g ± 18.4% (k=2)<sup>1</sup>



1 gram SAR value : 5.423 W/kg  
 10 gram SAR value : 2.488 W/kg  
 Area Scan Peak SAR : 6.298 W/kg  
 Zoom Scan Peak SAR : 11.090 W/kg

<sup>1</sup> validation uncertainty

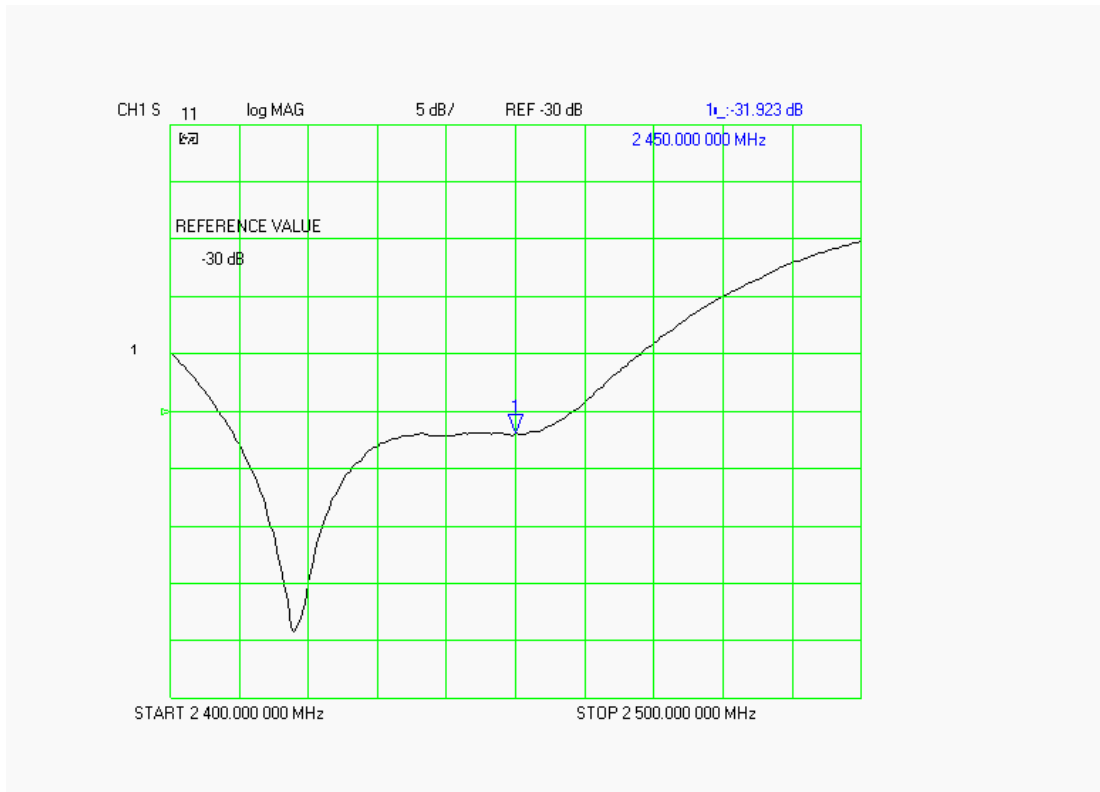
### Dipole Impedance and Return Loss

The impedance was measured at the SMA connector with a network analyzer. The dipole was positioned at the flat phantom sections according to measurement conditions stated above during impedance measurements.

Test	Result
S11 R/L	-31.923 dB
SWR	1.1373 U
Impedance	53.338 $\Omega$

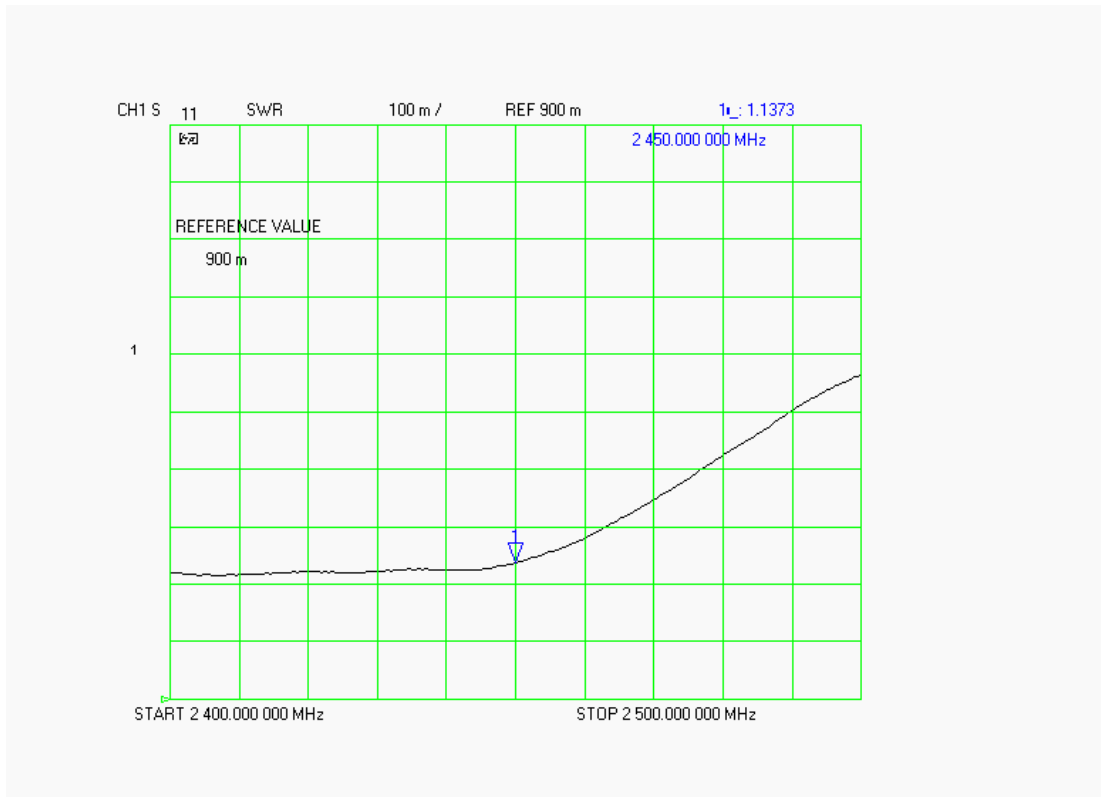
The following graphs are the results as displayed on the Vector Network Analyzer.

### S11 Parameter Return Loss

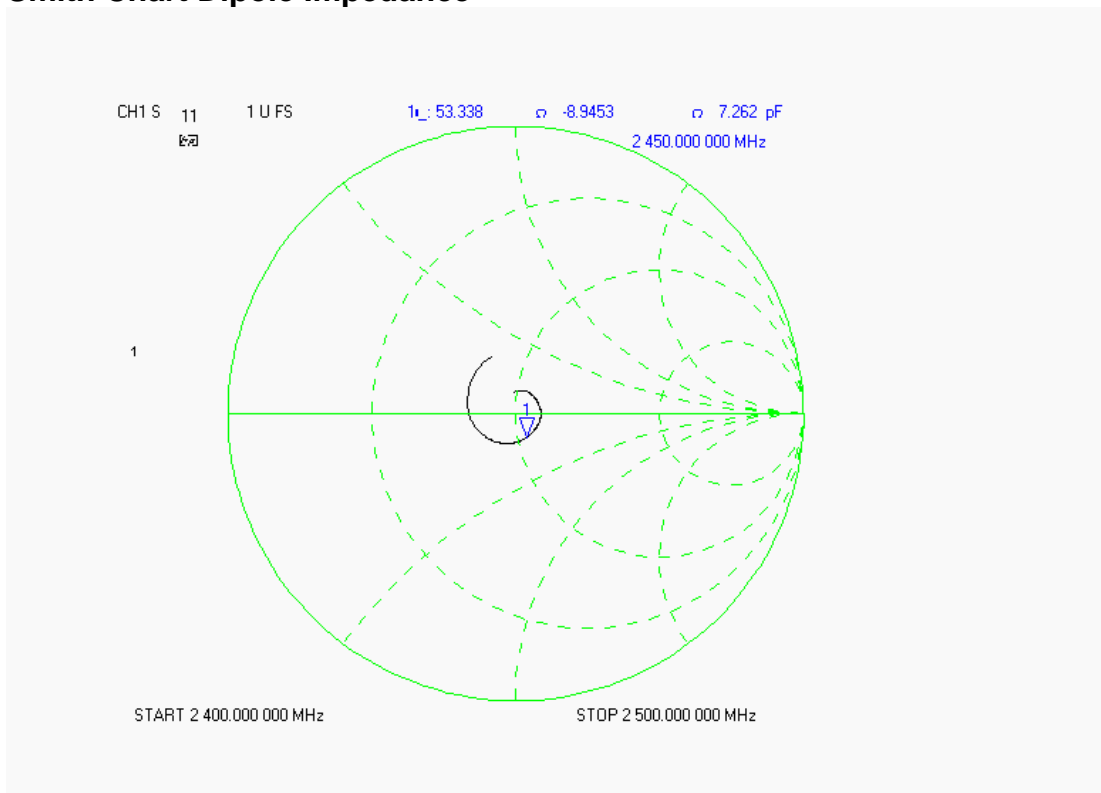




### SWR



### Smith Chart Dipole Impedance



## Test Equipment List

The test equipment used during Dipole Calibration, manufacturer, model number and, current calibration status are listed and located on the RF Exposure Lab, LLC system computer C:\Test Equipment\Calibration Equipment\Instrument List February 2006.

## RF Exposure Lab, LLC

Calibration File No: CAL.20070501

# CERTIFICATE OF CALIBRATION

It is certified that the equipment identified below has been calibrated at RF Exposure Lab, LLC by qualified personnel following recognized procedures and using transfer standards traceable to NRC/NIST.

### Validation Dipole

Manufacturer: APREL Laboratories

Part Number: ALS-D-BB-S-2

Frequency: 5.2 GHz to 5.8 GHz

Serial No: 235-00801

Manufactured: 22 May 2005  
Calibrated: 23 May 2007

Calibrated By: Signature on File  
Jay Moulton – Technical Manager

Approved By: Signature on File  
Tamara Moulton – Quality Manager

Measurement Uncertainty:

Repeatability:	23%
Tissue Uncertainty:	3.2%
Network Analyzer:	25%



## RF EXPOSURE LAB, LLC

2867 Progress Place, Suite 4D  
Escondido, CA 92029

Tel: (760) 737-3131  
FAX: (760) 737-9131

## Calibration Results Summary

The following results relate to the Calibrated Dipole and should be used as a quick reference for the user.

### Mechanical Dimensions

**Length:** 23.3 mm  
**Height:** 20.3 mm

### Electrical Specifications

#### 5.2 GHz Body

**SWR:** 1.8749 U  
**Return Loss:** -17.057 dB  
**Impedance:** 54.252  $\Omega$

#### System Validation Results

Frequency	1 Gram	10 Gram
5.2 GHz	62.98	15.44

#### 5.6 GHz Body

**SWR:** 1.2178 U  
**Return Loss:** -18.513 dB  
**Impedance:** 45.365  $\Omega$

#### System Validation Results

Frequency	1 Gram	10 Gram
5.6 GHz	59.92	15.30

#### 5.8 GHz Body

**SWR:** 1.8551 U  
**Return Loss:** -10.237 dB  
**Impedance:** 45.014  $\Omega$

#### System Validation Results

Frequency	1 Gram	10 Gram
5.8 GHz	58.92	15.05

## 5.2 GHz Body Measurement Conditions

The measurements were performed in the Uni-Phantom filled with body simulating liquid of the following electrical parameters at 5.2 GHz:

Relative Dielectricity	49.19	± 5%
Conductivity	5.40 mho/m	± 5%

The APREL Laboratories ALSAS system with a dosimetric E-field probe E-030 (SN:AL-E3P1, Conversion factor 13.0 at 5.2 GHz) was used for the measurements.

The dipole was mounted so that the dipole feed point was positioned below the center marking of the flat phantom and the dipole was oriented parallel to the body axis (the long side of the phantom). The standard measuring distance was 10mm from the dipole center to the solution surface.

The coarse grid with a grid spacing of 10mm was aligned with the dipole. The 7x7x7 fine cube was chosen for cube integration. The dipole input power (forward power) was 100mW ± 3%. The results are normalized to 1W input power.

The laboratories environmental conditions were as follows during the calibration sequence.

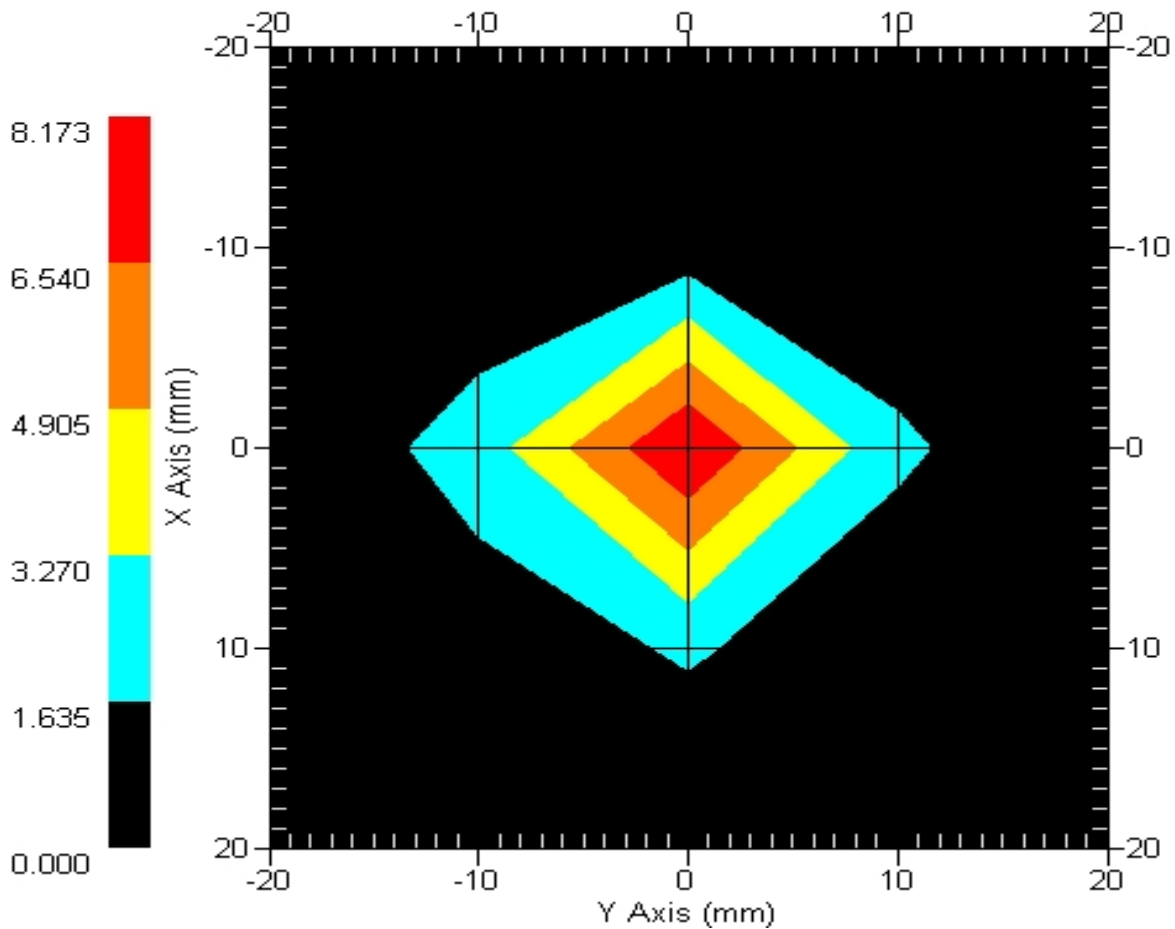
Ambient Temperature of the Laboratory:	23 °C ± 1.0 °C
Temperature of the Tissue:	20 °C ± 1.0 °C
Relative Humidity:	52%

**SAR Measurement**

Standard SAR measurements were performed according to the measurement conditions described above. The results have been normalized to a dipole input power of 1W (forward power). The resulting averaged SAR values measured with the dosimetric probe E-030 SN:AL-E3P1 and applying the advanced extrapolation are:

Averaged over 1 cm<sup>3</sup> (1 g) of tissue: 62.98 mW/g ± 19.1% (k=2)<sup>1</sup>  
 Averaged over 10 cm<sup>3</sup> (10 g) of tissue: 15.44 mW/g ± 18.8% (k=2)<sup>1</sup>

**Area Scan**



1 gram SAR value : 6.298 W/kg  
 10 gram SAR value : 1.544 W/kg  
 Area Scan Peak SAR : 8.173 W/kg  
 Zoom Scan Peak SAR : 21.817 W/kg

<sup>1</sup> validation uncertainty

## 5.6 GHz Body Measurement Conditions

The measurements were performed in the Uni-Phantom filled with body simulating liquid of the following electrical parameters at 5.6 GHz:

Relative Dielectricity	48.22	± 5%
Conductivity	5.68 mho/m	± 5%

The APREL Laboratories ALSAS system with a dosimetric E-field probe E-030 (SN:AL-E3P1, Conversion factor 13.5 at 5.6 GHz) was used for the measurements.

The dipole was mounted so that the dipole feed point was positioned below the center marking of the flat phantom and the dipole was oriented parallel to the body axis (the long side of the phantom). The standard measuring distance was 10mm from the dipole center to the solution surface.

The coarse grid with a grid spacing of 10mm was aligned with the dipole. The 7x7x7 fine cube was chosen for cube integration. The dipole input power (forward power) was 100mW ± 3%. The results are normalized to 1W input power.

The laboratories environmental conditions were as follows during the calibration sequence.

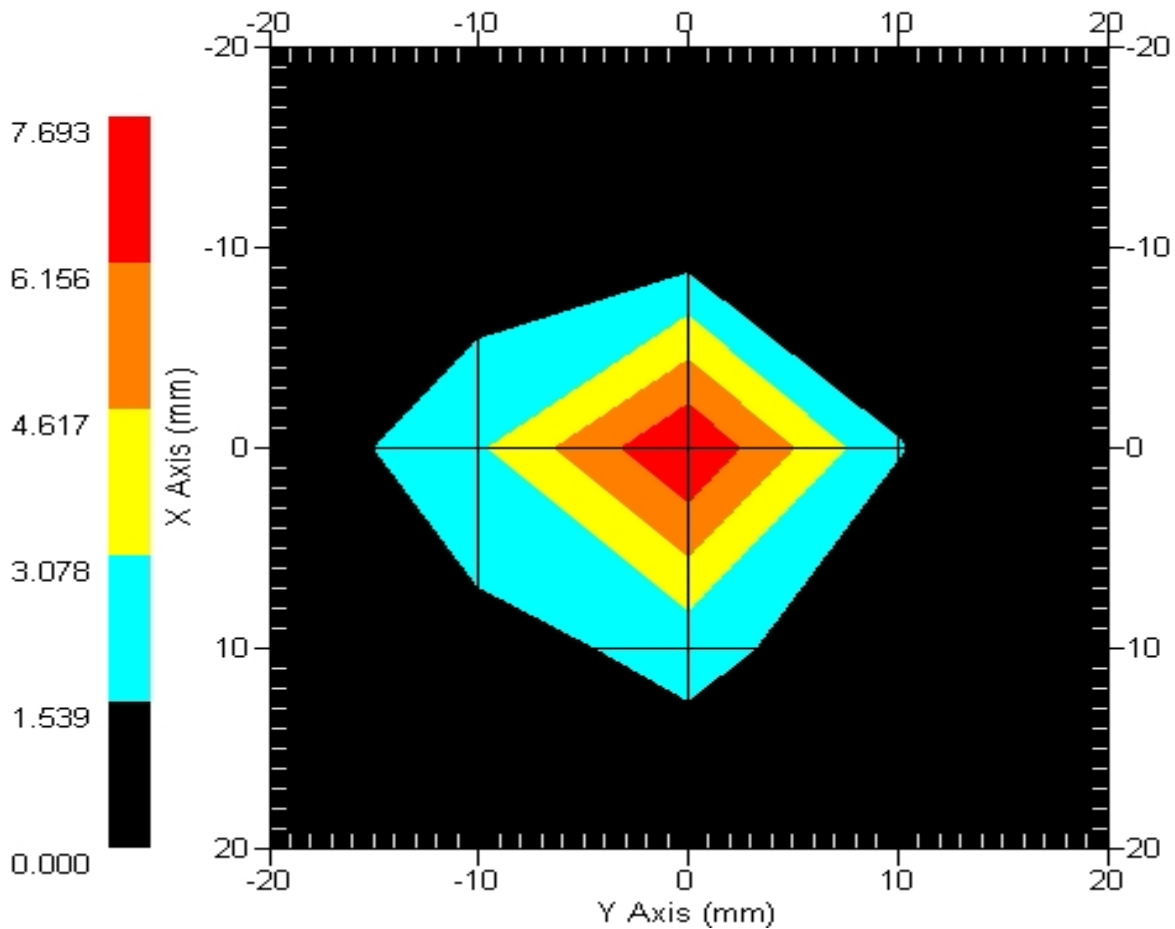
Ambient Temperature of the Laboratory:	23 °C ± 1.0 °C
Temperature of the Tissue:	20 °C ± 1.0 °C
Relative Humidity:	52%

**SAR Measurement**

Standard SAR measurements were performed according to the measurement conditions described above. The results have been normalized to a dipole input power of 1W (forward power). The resulting averaged SAR values measured with the dosimetric probe E-030 SN:AL-E3P1 and applying the advanced extrapolation are:

Averaged over 1 cm<sup>3</sup> (1 g) of tissue: 59.92 mW/g ± 19.1% (k=2)<sup>1</sup>  
 Averaged over 10 cm<sup>3</sup> (10 g) of tissue: 15.30 mW/g ± 18.8% (k=2)<sup>1</sup>

**Area Scan**



1 gram SAR value : 5.992 W/kg  
 10 gram SAR value : 1.530 W/kg  
 Area Scan Peak SAR : 7.693 W/kg  
 Zoom Scan Peak SAR : 19.415 W/kg

<sup>1</sup> validation uncertainty



## 5.8 GHz Body Measurement Conditions

The measurements were performed in the Uni-Phantom filled with body simulating liquid of the following electrical parameters at 5.8 GHz:

Relative Dielectricity	48.53	± 5%
Conductivity	5.95 mho/m	± 5%

The APREL Laboratories ALSAS system with a dosimetric E-field probe E-030 (SN:AL-E3P1, Conversion factor 14.0 at 5.8 GHz) was used for the measurements.

The dipole was mounted so that the dipole feed point was positioned below the center marking of the flat phantom and the dipole was oriented parallel to the body axis (the long side of the phantom). The standard measuring distance was 10mm from the dipole center to the solution surface.

The coarse grid with a grid spacing of 10mm was aligned with the dipole. The 7x7x7 fine cube was chosen for cube integration. The dipole input power (forward power) was 100mW ± 3%. The results are normalized to 1W input power.

The laboratories environmental conditions were as follows during the calibration sequence.

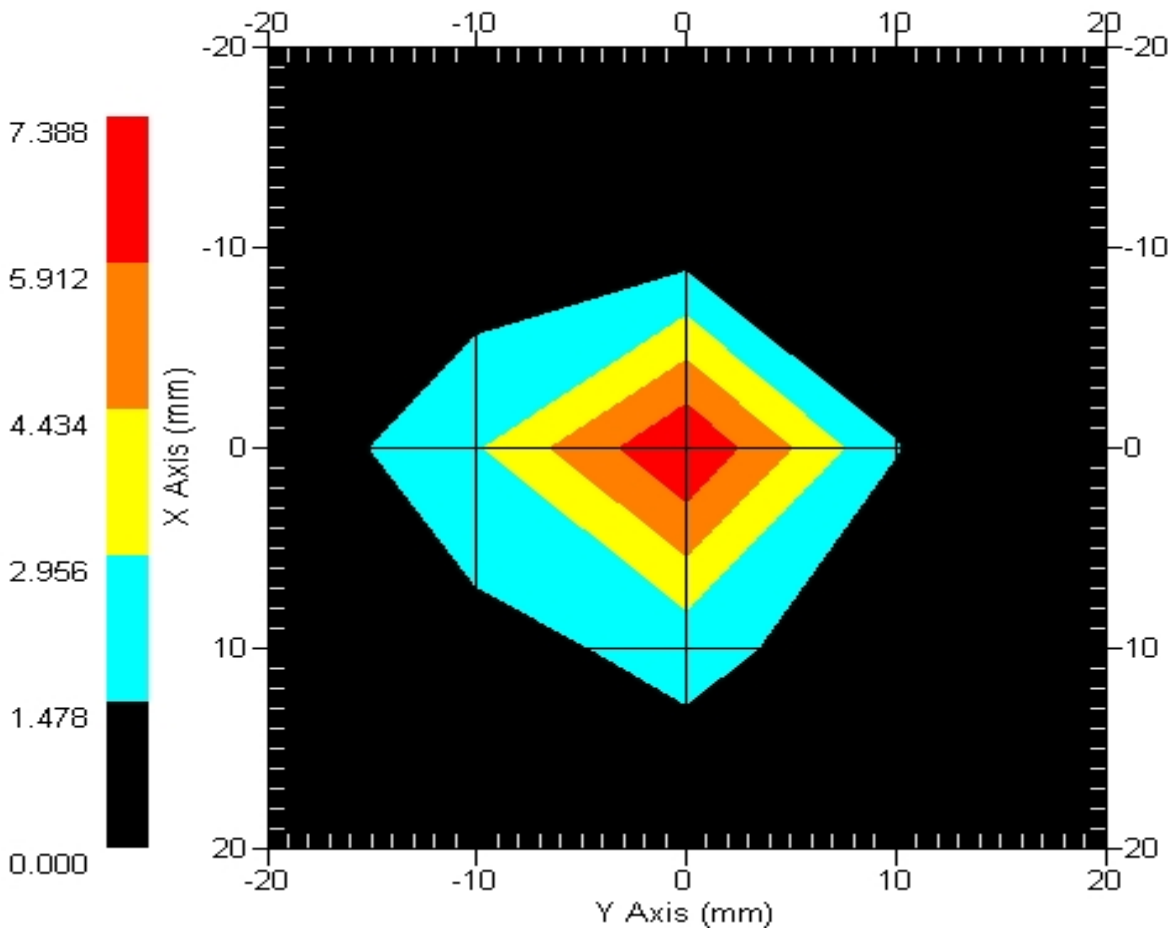
Ambient Temperature of the Laboratory:	23 °C ± 1.0 °C
Temperature of the Tissue:	20 °C ± 1.0 °C
Relative Humidity:	52%

**SAR Measurement**

Standard SAR measurements were performed according to the measurement conditions described above. The results have been normalized to a dipole input power of 1W (forward power). The resulting averaged SAR values measured with the dosimetric probe E-030 SN:AL-E3P1 and applying the advanced extrapolation are:

Averaged over 1 cm<sup>3</sup> (1 g) of tissue: 58.92 mW/g ± 19.1% (k=2)<sup>1</sup>  
 Averaged over 10 cm<sup>3</sup> (10 g) of tissue: 15.05 mW/g ± 18.8% (k=2)<sup>1</sup>

**Area Scan**



1 gram SAR value : 5.892 W/kg  
 10 gram SAR value : 1.505 W/kg  
 Area Scan Peak SAR : 7.388 W/kg  
 Zoom Scan Peak SAR : 19.315 W/kg

<sup>1</sup> validation uncertainty

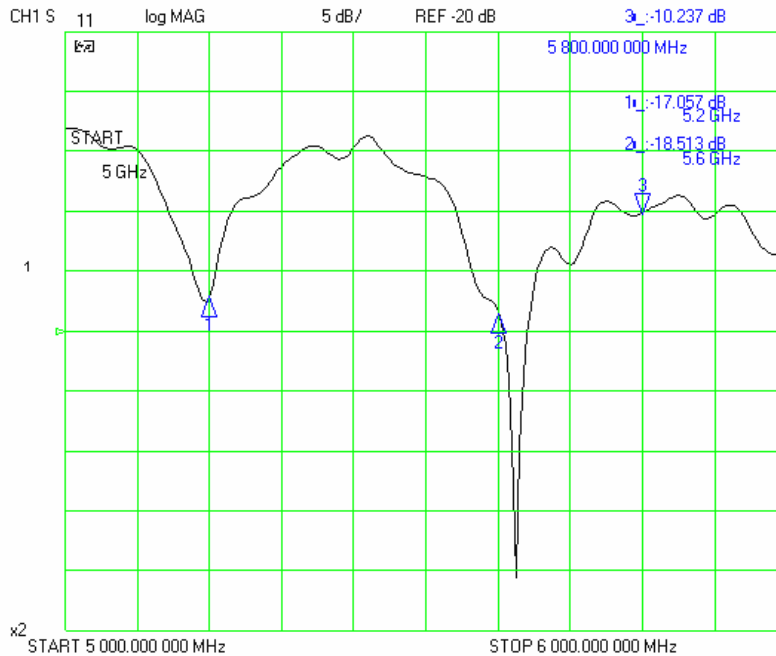
### Dipole Impedance and Return Loss

The impedance was measured at the SMA connector with a network analyzer. The dipole was positioned at the flat phantom sections according to measurement conditions stated above during impedance measurements.

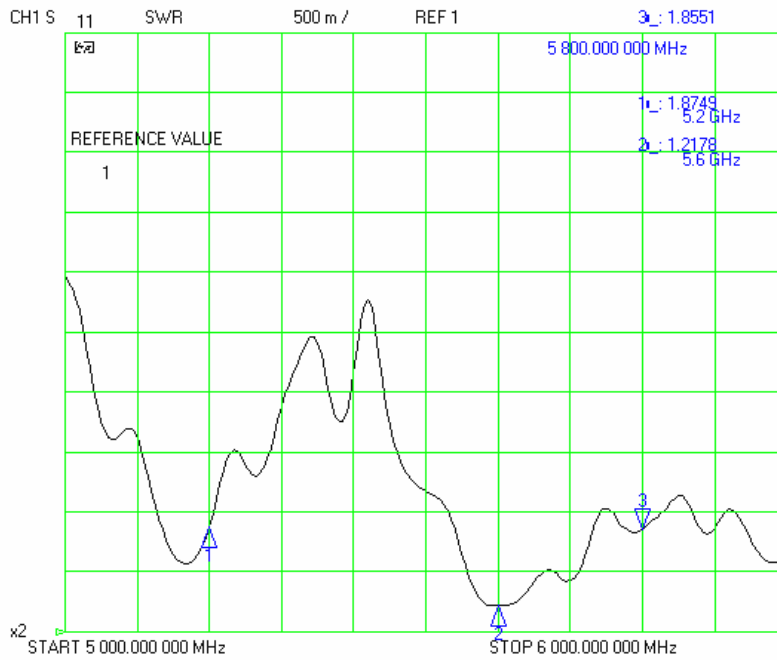
Test	Result – 5.2 GHz	Result – 5.6 GHz	Result – 5.8 GHz
S11 R/L	-17.057 dB	-18.513 dB	-10.237 dB
SWR	1.8749 U	1.2178 U	1.8551 U
Impedance	54.252 $\Omega$	45.365 $\Omega$	45.014 $\Omega$

The following graphs are the results as displayed on the Vector Network Analyzer.

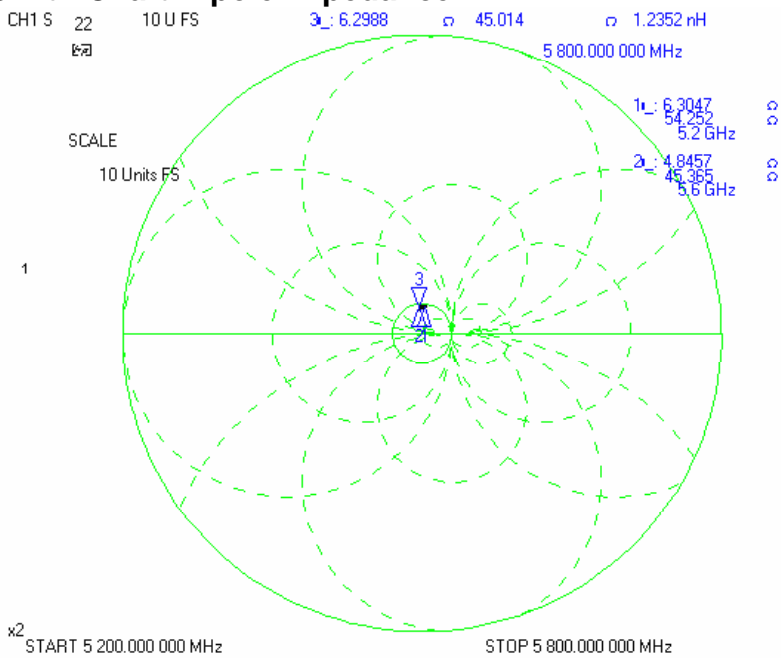
### S11 Parameter Return Loss



**SWR**



**Smith Chart Dipole Impedance**



## Test Equipment List

The test equipment used during Dipole Calibration, manufacturer, model number and, current calibration status are listed and located on the RF Exposure Lab, LLC system computer C:\Test Equipment\Calibration Equipment\Instrument List May 2007.

## Appendix F – Phantom Calibration Data Sheets

## NCL CALIBRATION LABORATORIES

Calibration File No.: RFE-273

# CERTIFICATE OF CALIBRATION

It is certified that the equipment identified below has been calibrated in the **NCL CALIBRATION LABORATORIES** by qualified personnel following recognized procedures and using transfer standards traceable to National Standards.

Thickness of the UniPhantom is 2 mm  $\pm$  10%  
Pinna thickness is 6 mm  $\pm$  10%

Resolution:	0.01 mm	Calibrated to:	0.0 mm
Stability:	OK	Accuracy:	< 0.1 mm

Calibrated By: Karen K. Feb 17/04.

### **NCL** CALIBRATION LABORATORIES

51 SPECTRUM WAY  
NEPEAN, ONTARIO  
CANADA K2R 1E6

Division of APREL Lab.  
TEL: (613) 820-4988  
FAX: (613) 820-4161