

Antenna Regulatory Information

• Product type	• WWAN antenna
• Model number	• RM2 / Paltrow
• Revision	• X01
• Manufacturer Part No. : Main / Aux	• 2023824-1 / 2023825-1
• Dell Part No. : Main / Aux	•



Template Revision 031808

1. Specifications

Antenna Specifications

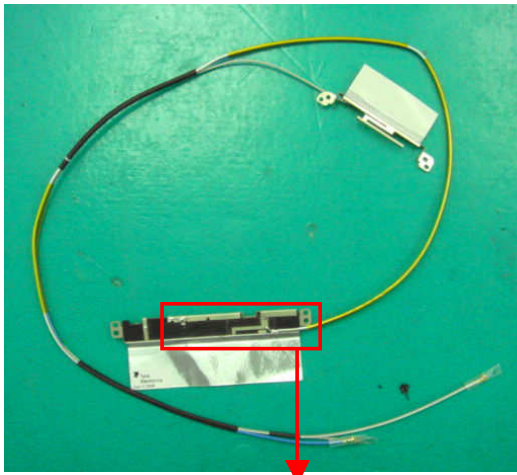
Antenna Type (Material, Technology)	PIFA
Antenna Model Number	Paltrow
Operating Frequency Range(s)	824MHz ~ 960MHz and 1710MHz ~ 2170MHz
Peak Gain (Low Band) (dBi)	Main 0.44 / Aux -3.84
Peak Gain (High Band) (dBi)	Main 1.49 / Aux -1.01
Radio Connector Type	I-PEX MHF.
Mid-Line Connector Type (If Applicable)	N/A

Remark: Peak Gains include all system losses (connector, cable, etc)

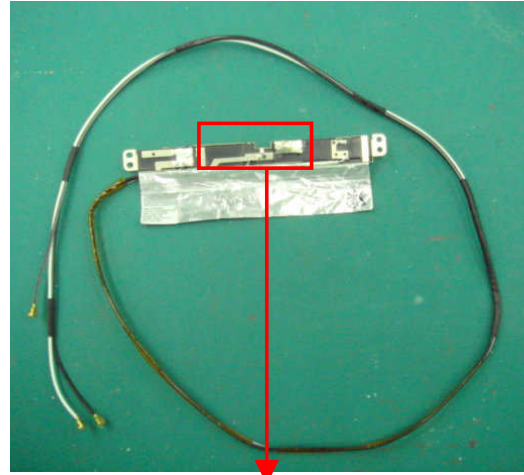
Cable Specifications

Cable Parameters	Main			Aux		
	LCD Side	Base Side	Total	LCD Side	Base Side	Total
Length (mm)	247	456	703	257	371	628
Loss (Including Connectors) (dB, 0.9GHz / 2GHz)			1.06 / 1.41			1.44 / 1.96
Description (Color, Diameter, Manufacturer)	Color: White/Gray OD: 1.37 mm Vendor: Sumitomo or equivalent			Color: Black/Gray OD: 1.13 mm (low loss) Vendor: Sumitomo or equivalent		

2. Antenna Assembly

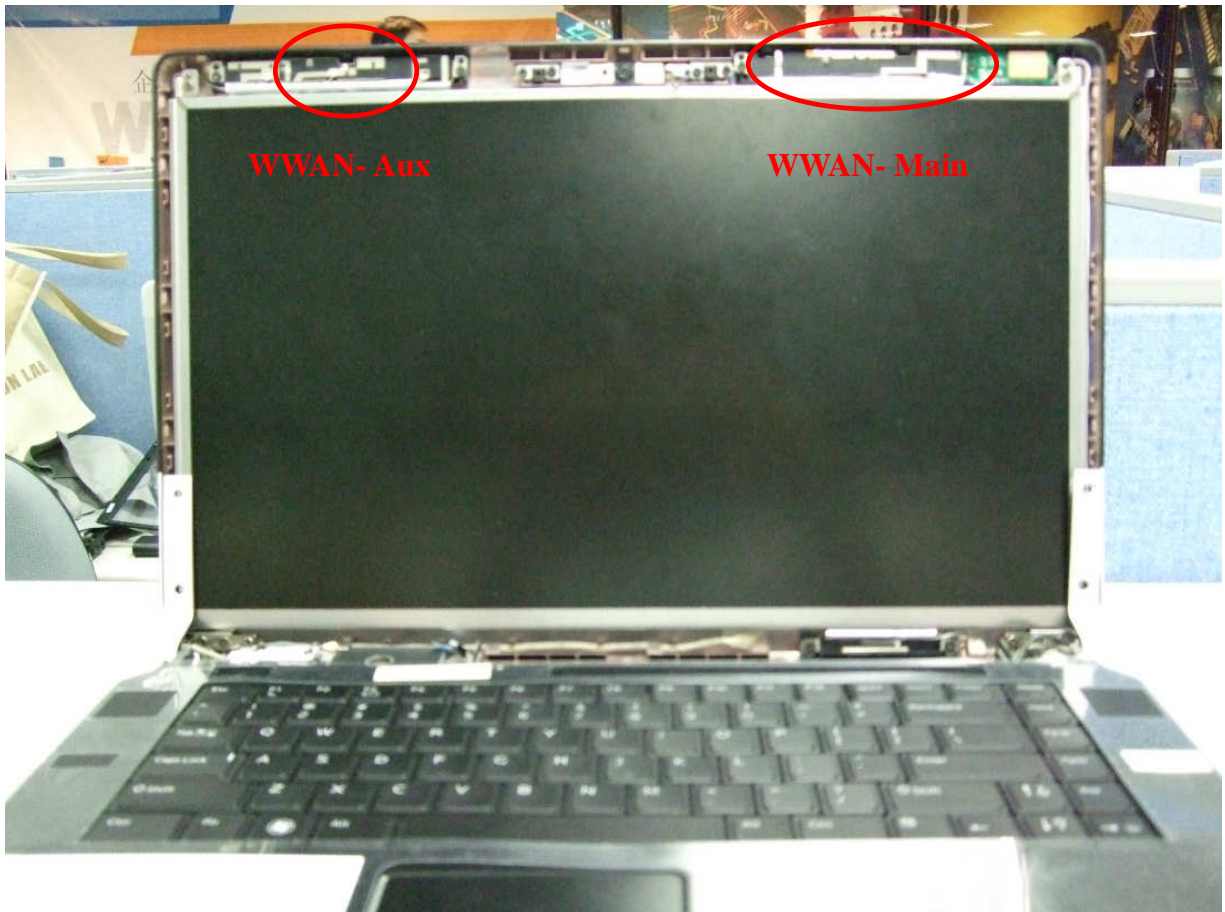


Main Antenna



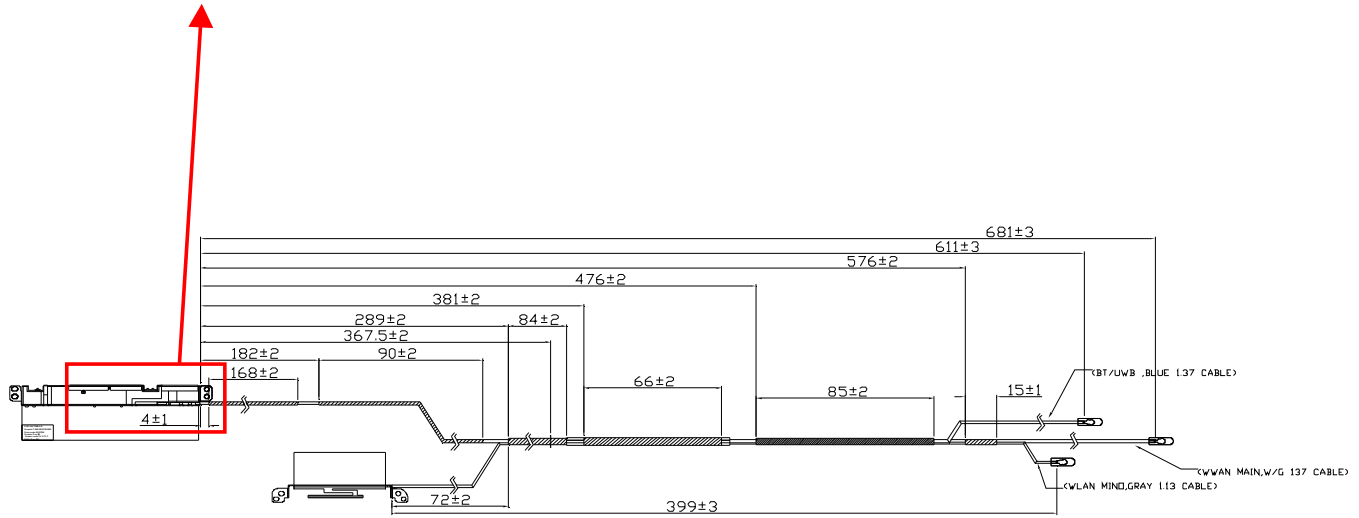
Aux Antenna

3. Antenna Assembly Installed in The Notebook

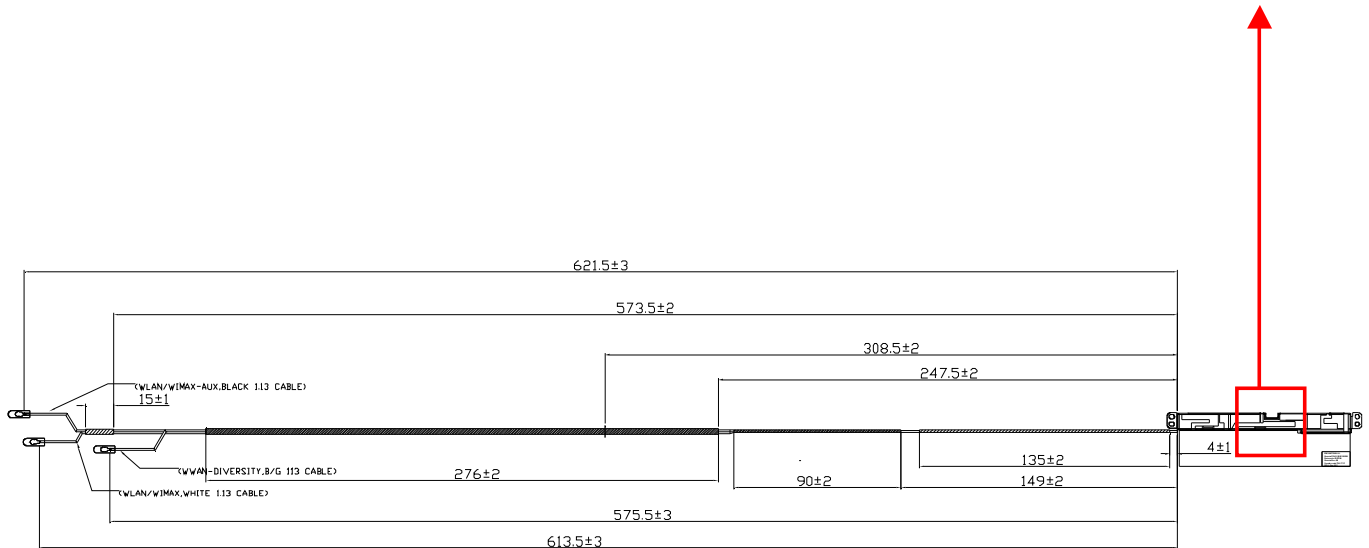


4. Mechanical Drawing of Antennas

WWAN- Main



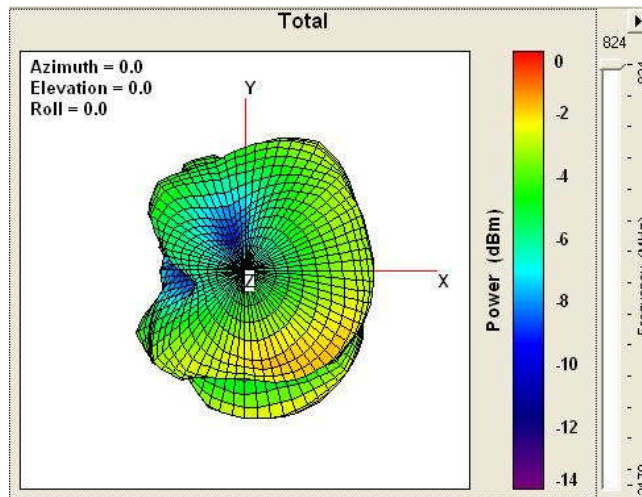
WWAN- Aux



5. Gain Patterns

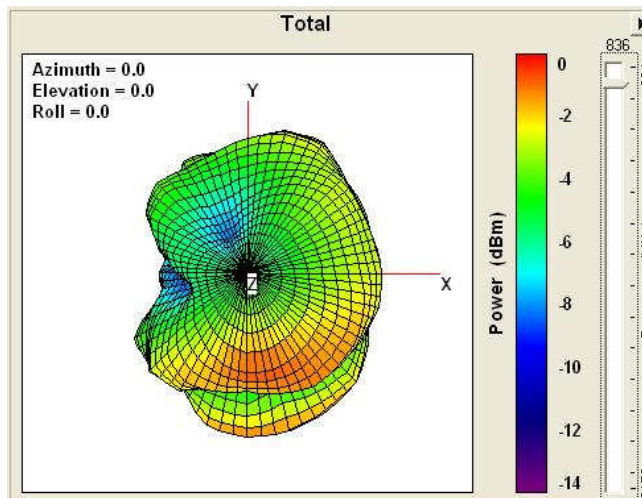
- Main Antenna

824 MHz



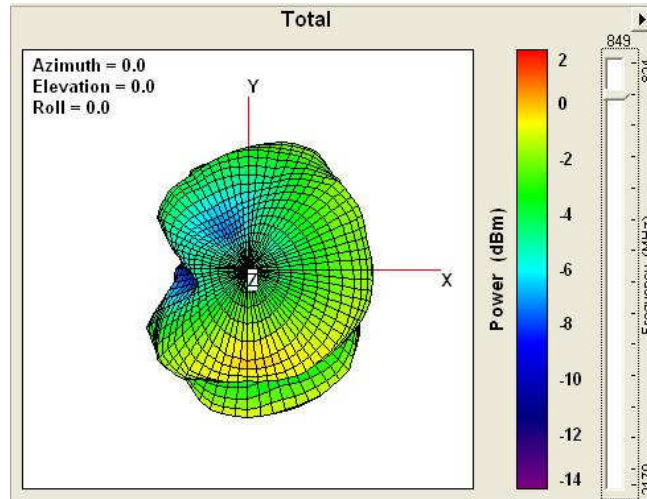
Center Frequency	824 MHz
Peak EIRP(dBm)	-0.97
Efficiency(%)	38.14

836 MHz



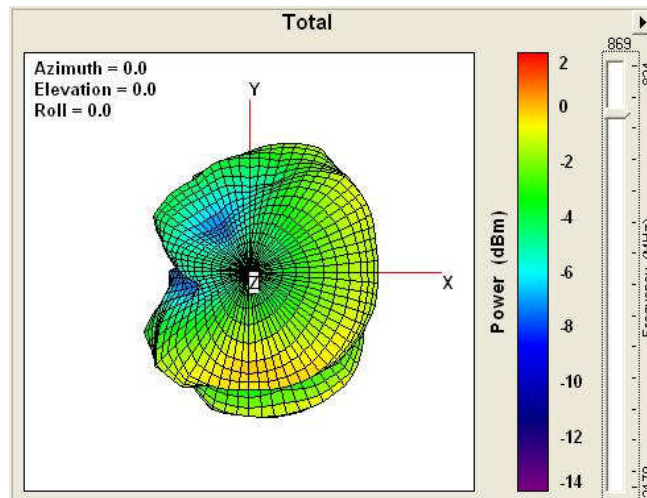
Center Frequency	836 MHz
Peak EIRP(dBm)	-0.24
Efficiency(%)	43.37

849 MHz



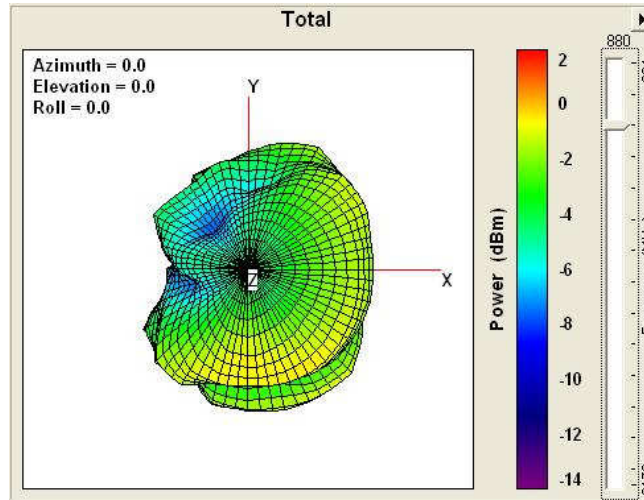
Center Frequency	849 MHz
Peak EIRP(dBm)	0.23
Efficiency(%)	48.62

869 MHz



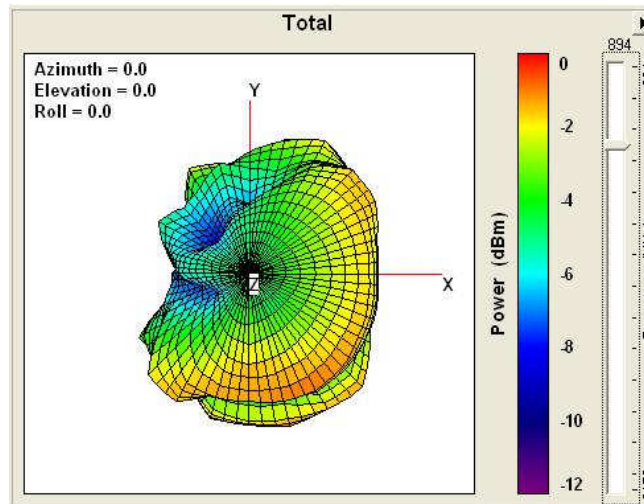
Center Frequency	869 MHz
Peak EIRP(dBm)	0.44
Efficiency(%)	52.15

880 MHz



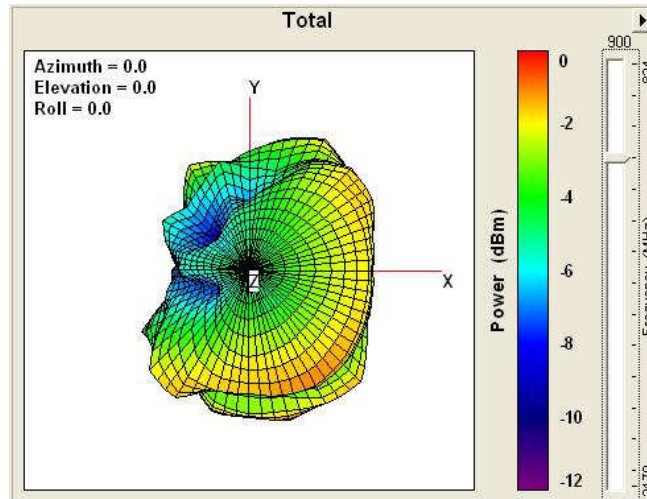
Center Frequency	880 MHz
Peak EIRP(dBm)	0.20
Efficiency(%)	49.58

894 MHz



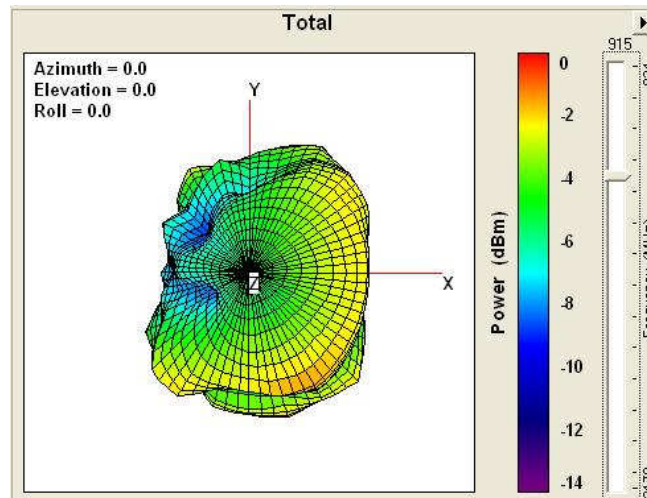
Center Frequency	894 MHz
Peak EIRP(dBm)	-0.25
Efficiency(%)	44.52

900 MHz



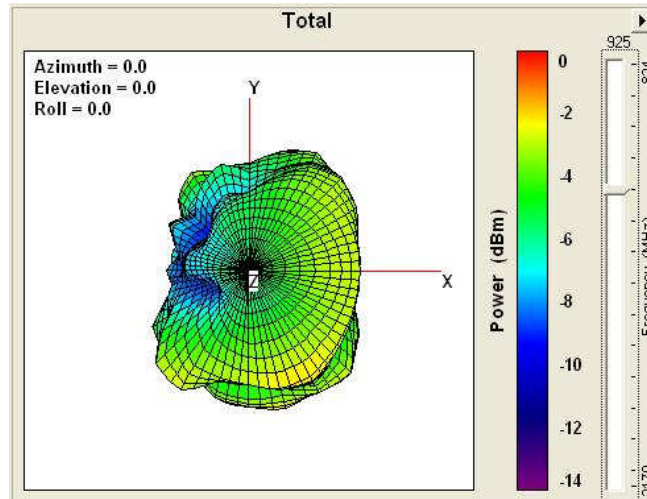
Center Frequency	900 MHz
Peak EIRP(dBm)	-0.45
Efficiency(%)	42.74

915 MHz



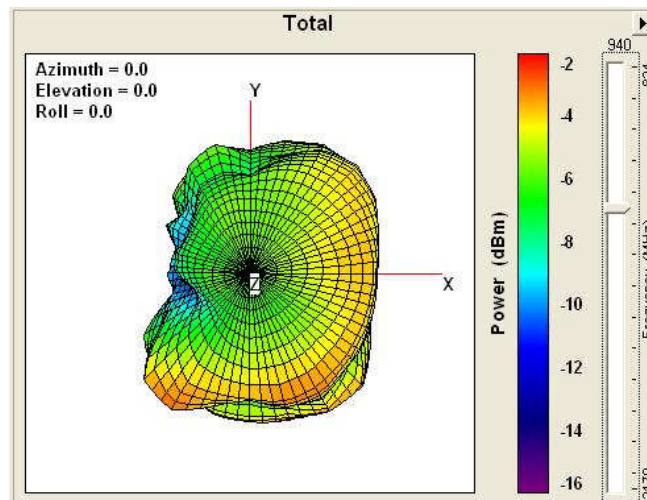
Center Frequency	915 MHz
Peak EIRP(dBm)	-1.06
Efficiency(%)	36.65

925 MHz



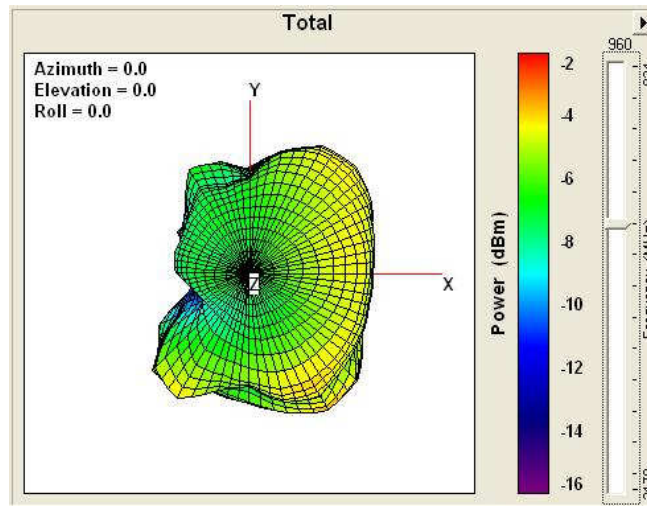
Center Frequency	925 MHz
Peak EIRP(dBm)	-1.68
Efficiency(%)	31.98

940 MHz



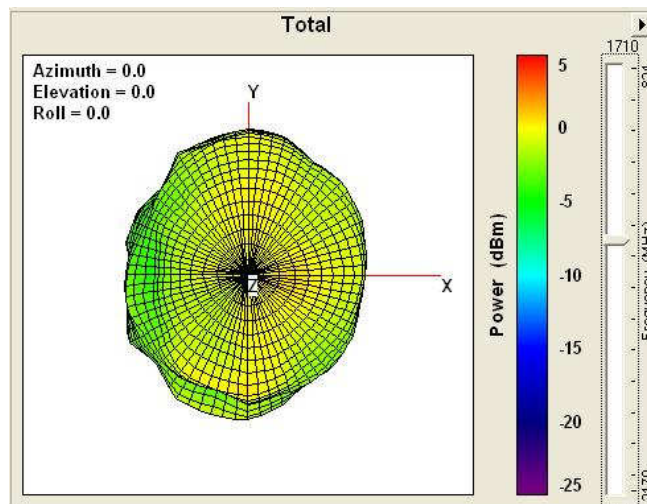
Center Frequency	940 MHz
Peak EIRP(dBm)	-2.20
Efficiency(%)	27.05

960 MHz



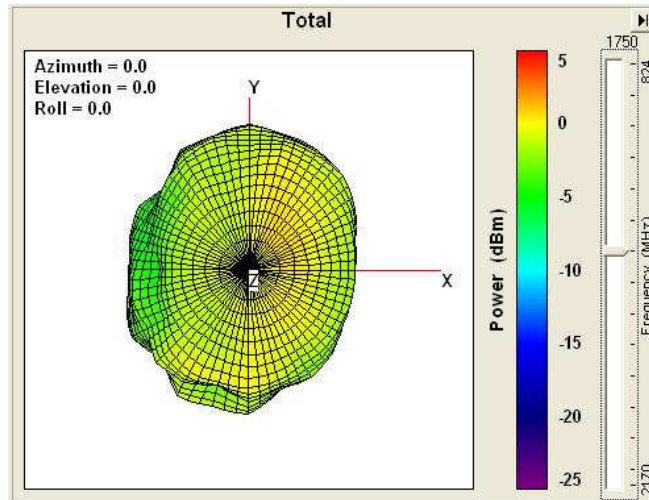
Center Frequency	960 MHz
Peak EIRP(dBm)	-2.86
Efficiency(%)	22.53

1710 MHz



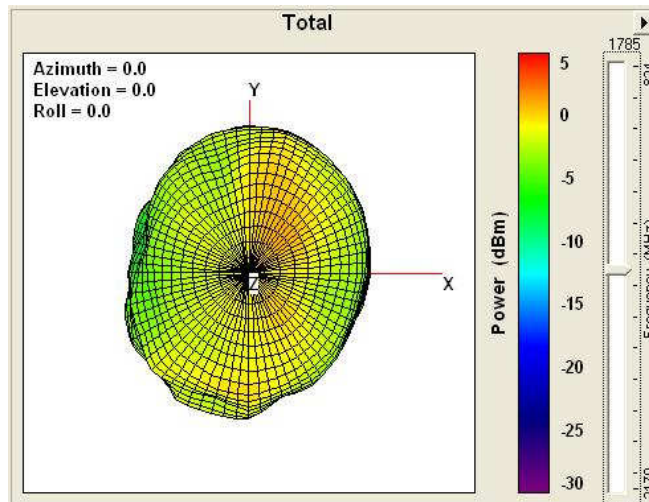
Center Frequency	1710 MHz
Peak EIRP(dBm)	0.82
Efficiency(%)	45.59

1750 MHz



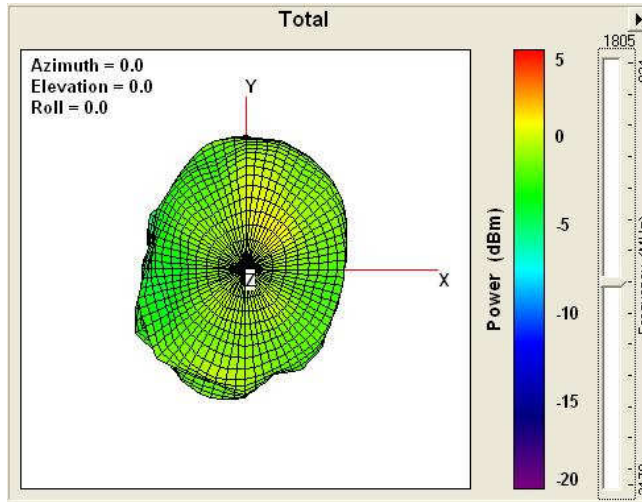
Center Frequency	1750 MHz
Peak EIRP(dBm)	0.84
Efficiency(%)	43.44

1785 MHz



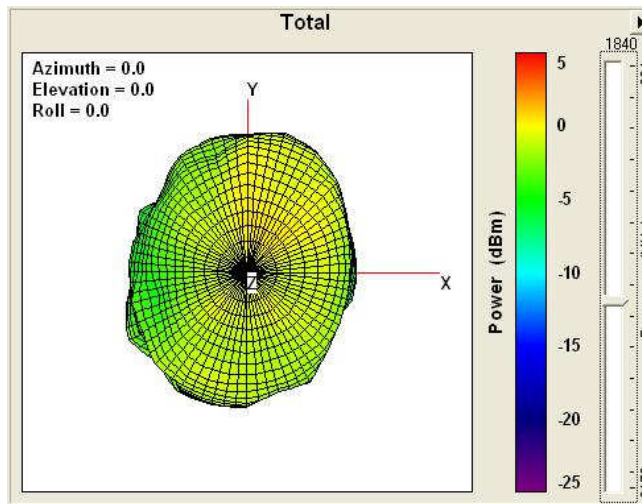
Center Frequency	1785 MHz
Peak EIRP(dBm)	1.34
Efficiency(%)	38.93

1805 MHz



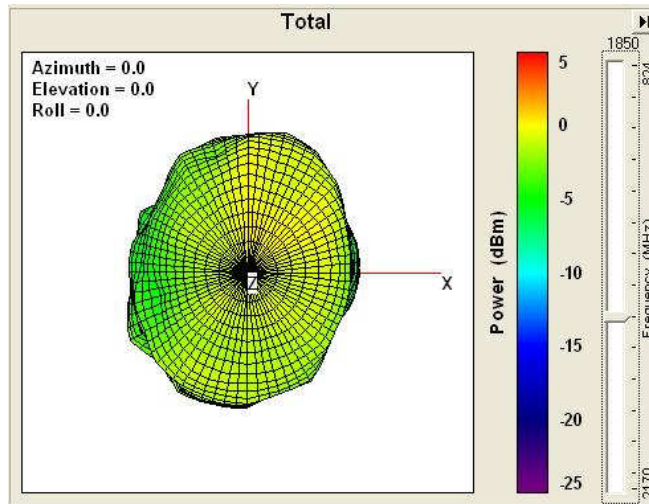
Center Frequency	1805 MHz
Peak EIRP(dBm)	1.22
Efficiency(%)	40.28

1840 MHz



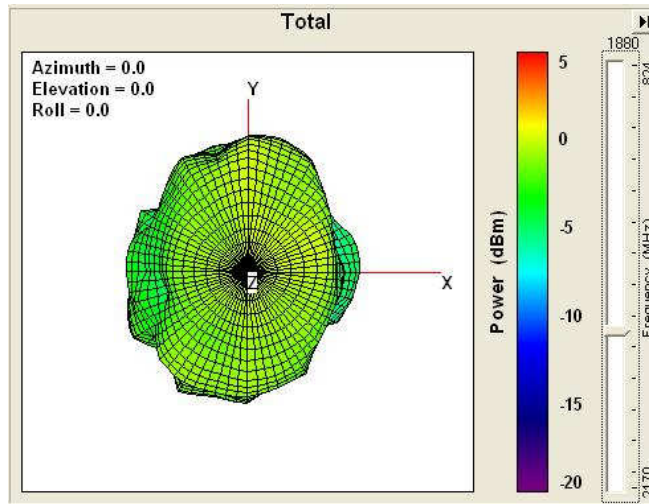
Center Frequency	1840 MHz
Peak EIRP(dBm)	0.62
Efficiency(%)	40.62

1850 MHz



Center Frequency	1850 MHz
Peak EIRP(dBm)	0.38
Efficiency(%)	39.62

1880 MHz



Center Frequency	1880 MHz
Peak EIRP(dBm)	0.70
Efficiency(%)	44.08