

Antenna Regulatory Information

• Product type	• WWAN antenna
• Model number	• Paltrow
• Revision	• Rev. 2
• Manufacturer Part No. : Main / Aux	• AMP8P-700055/ AMP8P-700056
• Dell Part No. : Main / Aux	•



ADVANCED-CONNECTEK INC.

B1, No. 205, Sec. 3, Bei-Hsin Rd., Hsin-Tien

Taipei, Taiwan, R.O.C

TEL : 886-2-8913-1939

FAX : 886-2-8913-2538

Http : //www.acon.com

Template Revision 062007

1. Specifications

Antenna Specifications

Antenna Type (Material, Technology)	PCB, IFA
Antenna Model Number	Paltrow
Operating Frequency Range(s)	824MHz ~ 960MHz and 1565-1585 and 1710MHz ~ 2170MHz
Peak Gain (Low Band) (dBi)	Main:-1.44 / Aux:-5.35
Peak Gain (High Band) (dBi)	Main: 0.15 / Aux:-0.38
Radio Connector Type	IPEX 20278-111R-13 / IPEX 20531-111R-37
Mid-Line Connector Type (If Applicable)	N/A

Remark: Peak Gains include all system losses (connector, cable, etc)

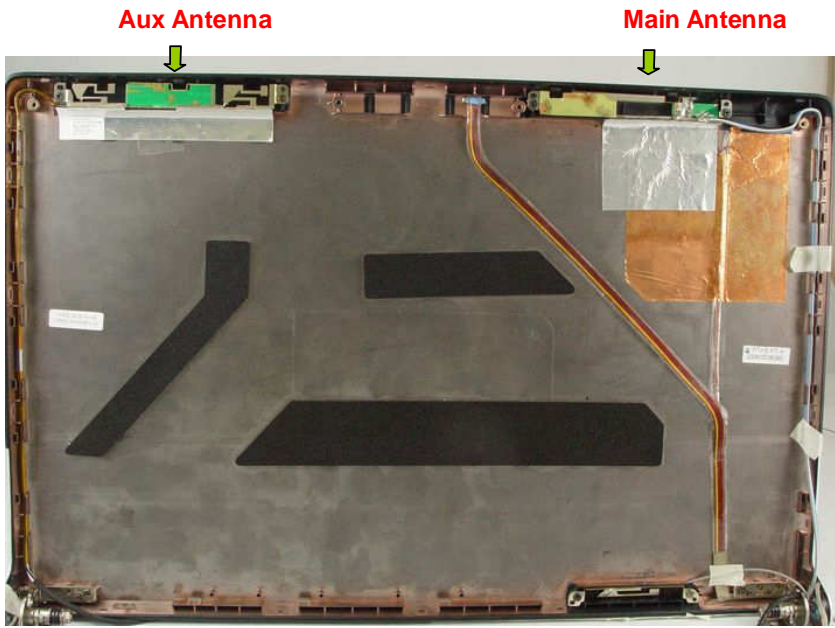
Cable Specifications

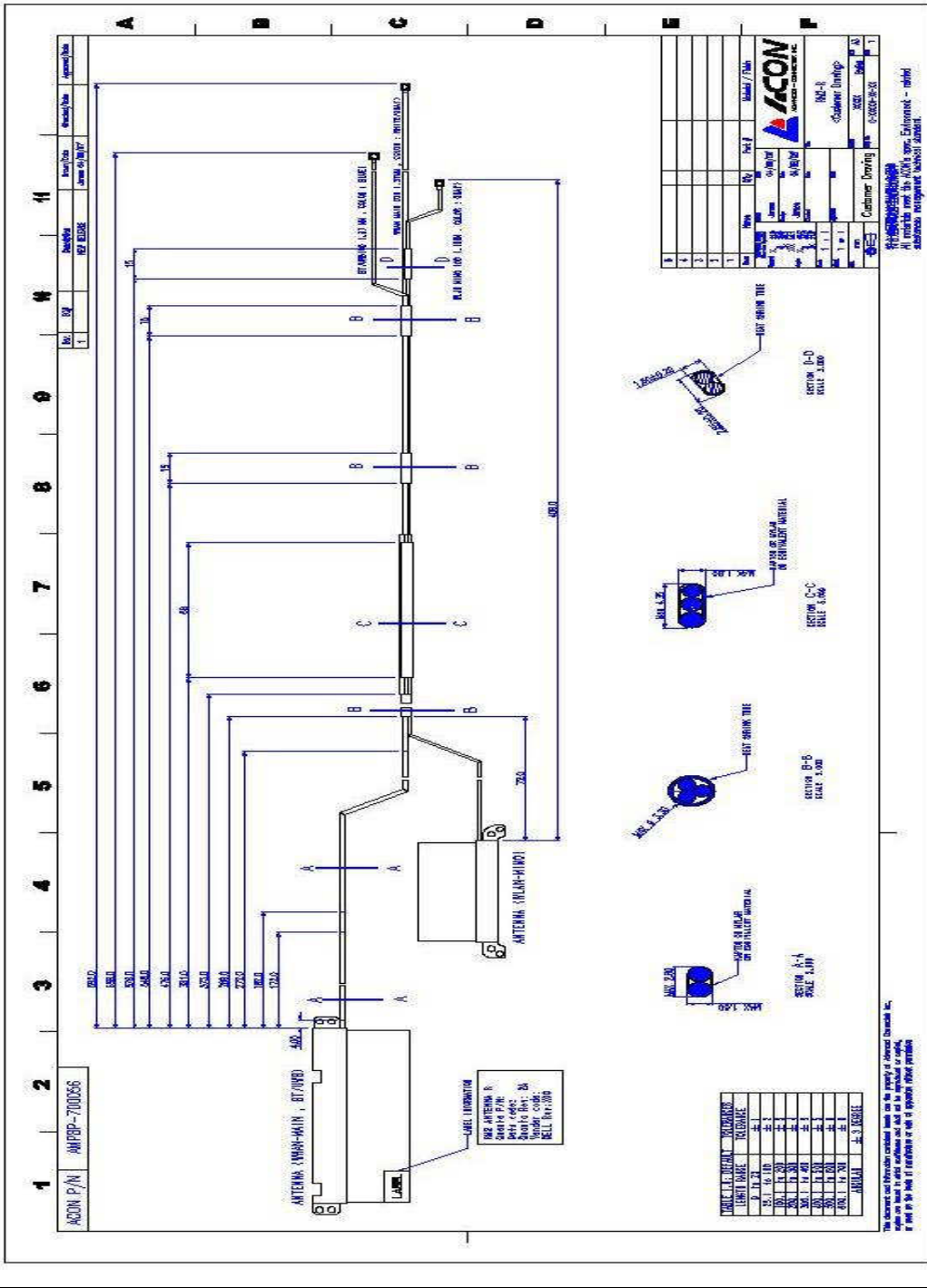
Cable Parameters	Main			Aux		
	LCD Side	Base Side	Total	LCD Side	Base Side	Total
Length (mm)	N/A	N/A	750	N/A	N/A	627
Loss (Including Connectors) (dB, 0.9GHz / 2GHz)			-1.2/-1.8			-1.2/-1.6
Description (Color, Diameter, Manufacturer)	Color: White with a gray stripe OD: 1.37 mm Vendor: Kurabe/GBE/Sumitomo			Color: Black with a gray stripe OD: 1.13 mm (low loss) Vendor: Kurabe/GBE/Sumitomo		

2. Antenna Assembly



3. Antenna Assembly Installed in The Notebook





ACON P/N AMPSP-700056

Rev	By	App	Date	Description	Revision/Date
1				REV B338	

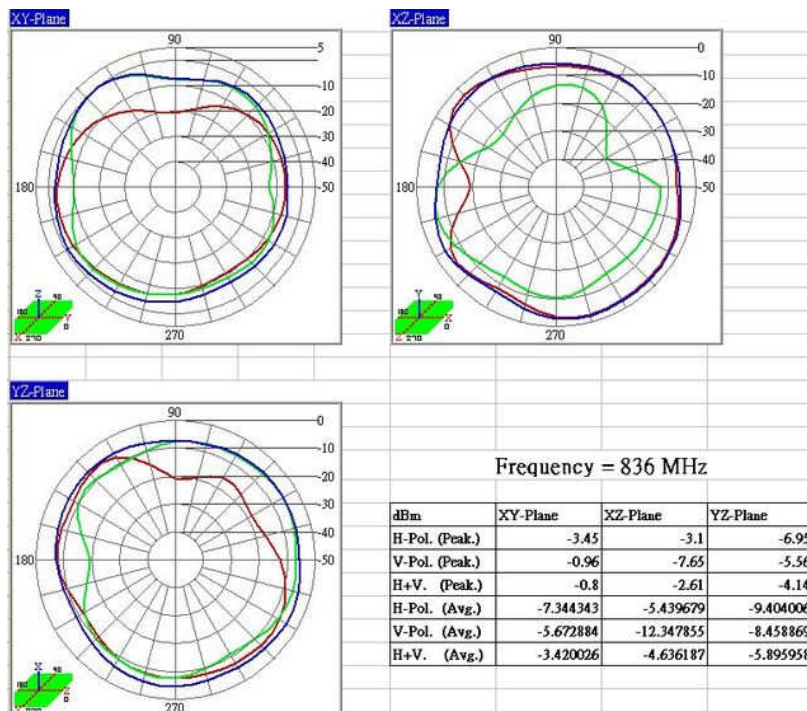
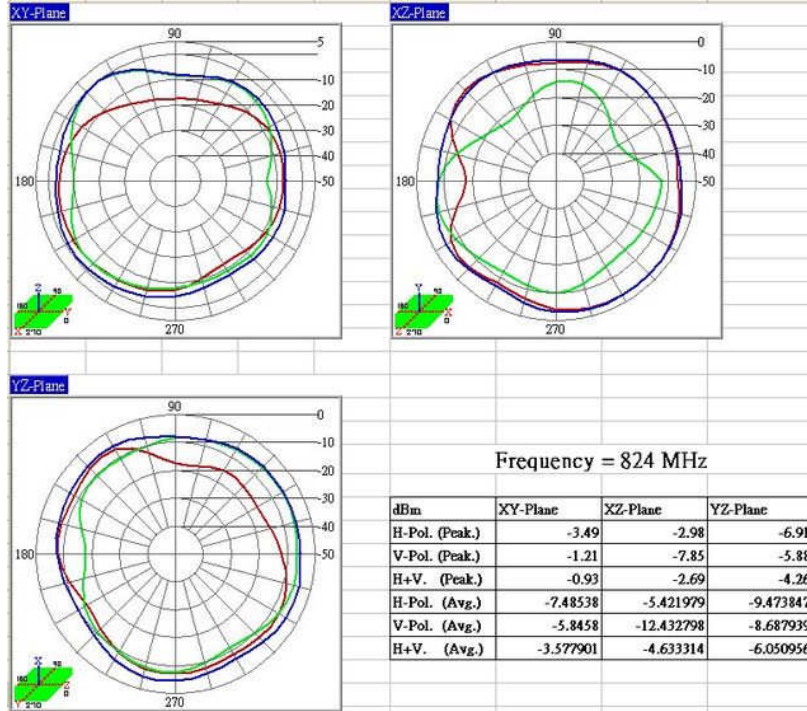
UNIT NAME	HEIGHT
A	480
B	150
C	150
D	480
WIND	107
MAIN	400
ARRAY	107
WIND	107

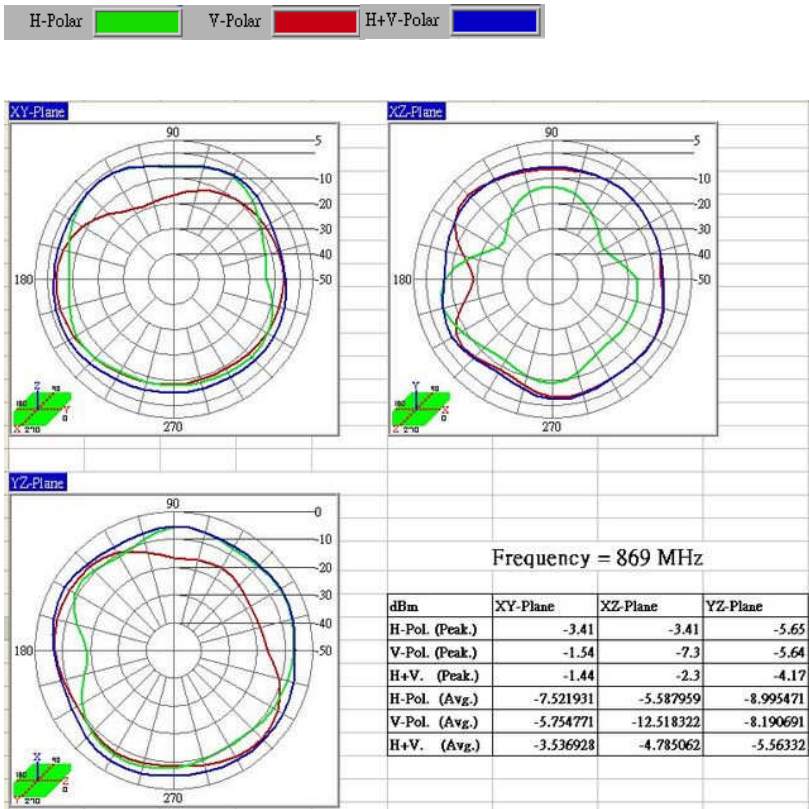
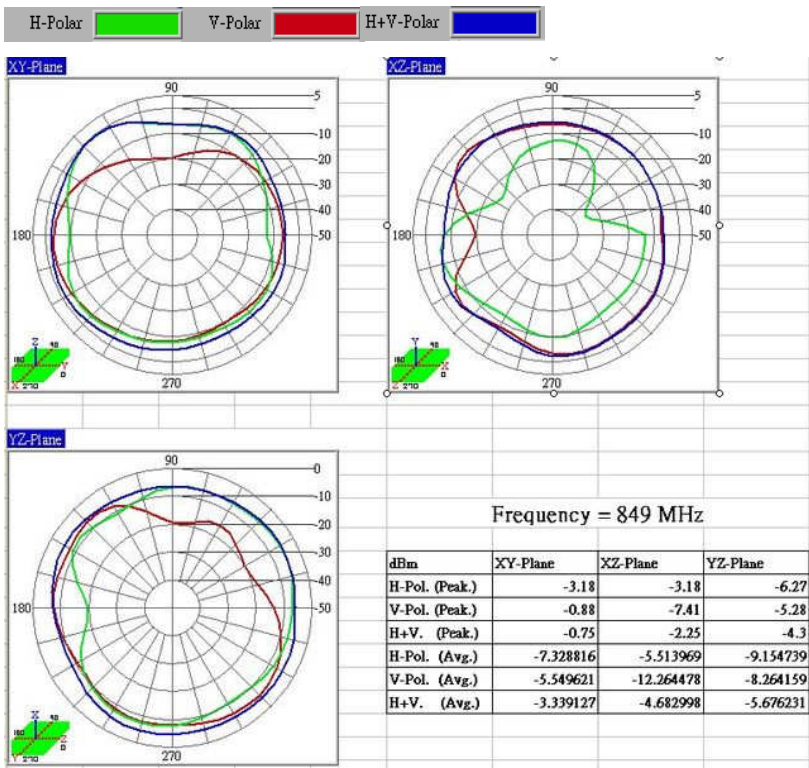
The document and its contents are confidential. It is to be used only for the purpose of the equipment or system for which it is intended. It is not to be used for any other purpose without the prior written consent of ACON. All rights reserved. ACON is not responsible for any damage or loss of data or information caused by the use of this document.

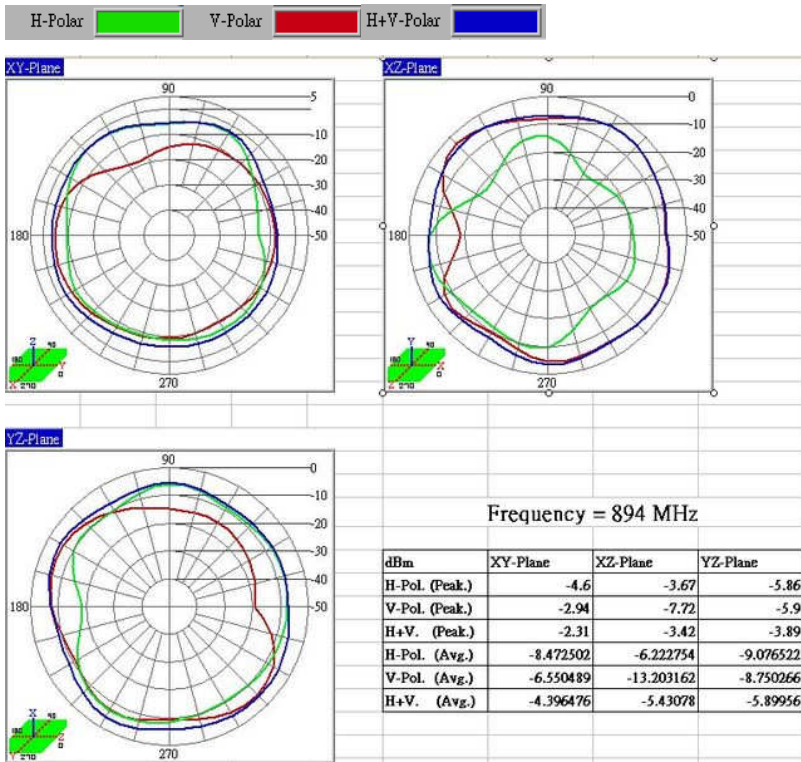
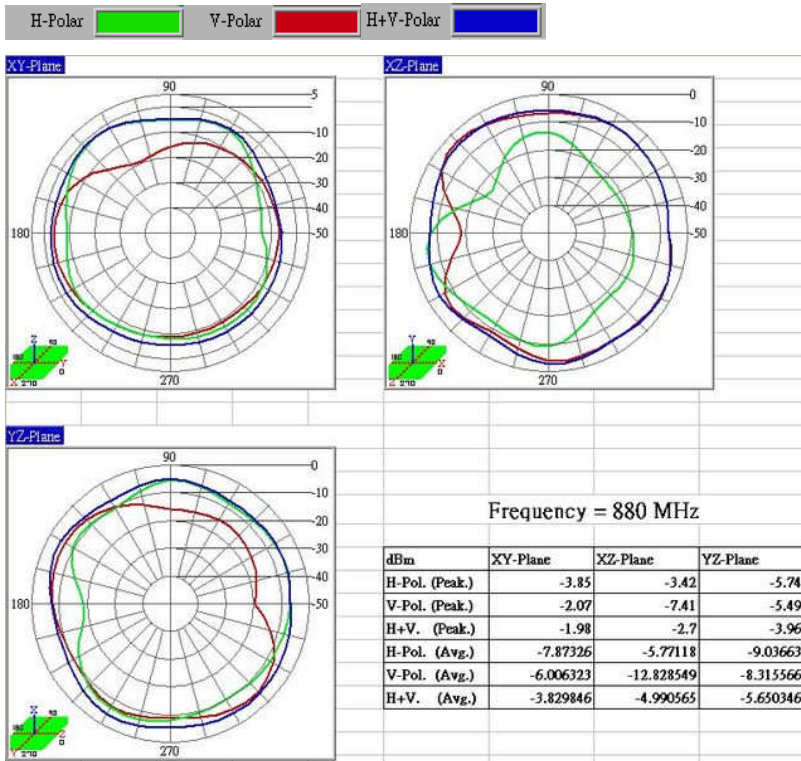
ACON
A CON
Customer Drawing
Date: 03/08/2011
Rev: 1
Scale: 1:1
WELL 447-019

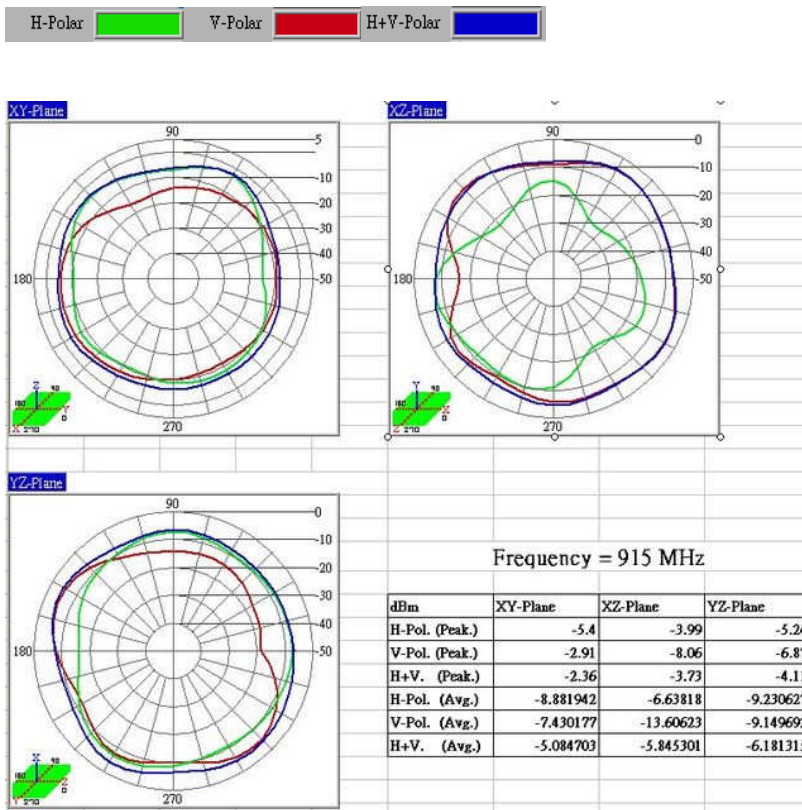
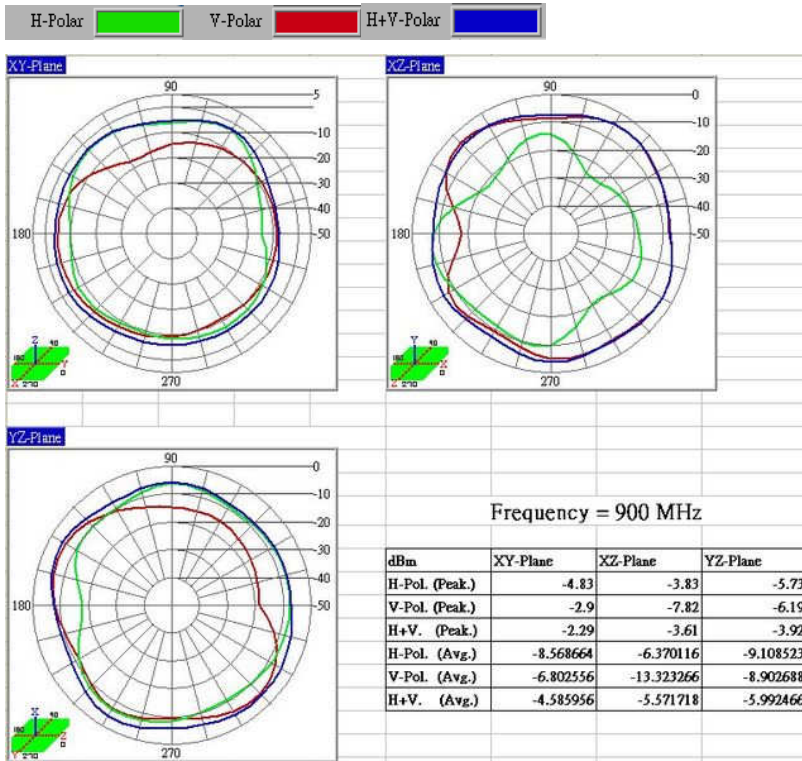
5. Gain Patterns

- Main Antenna

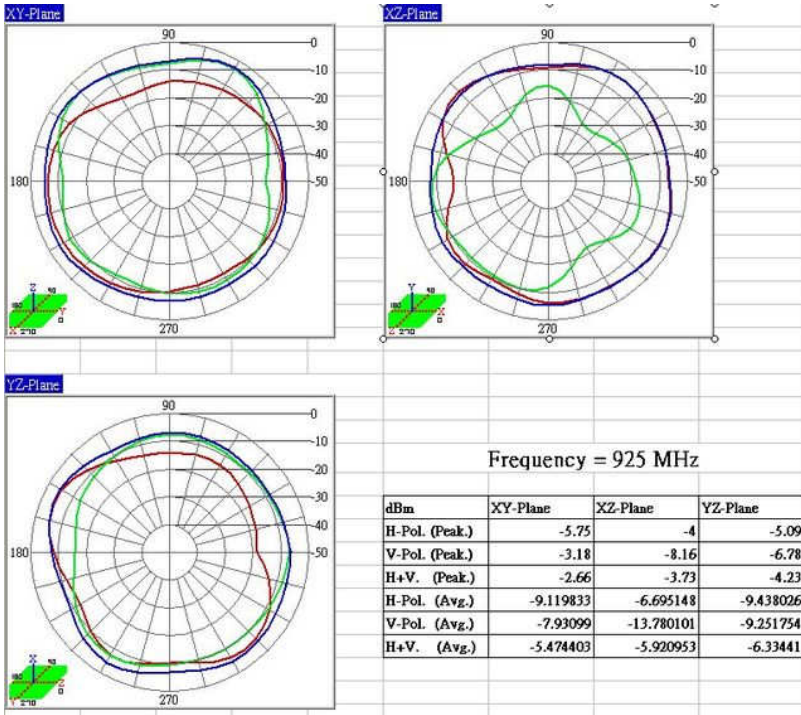




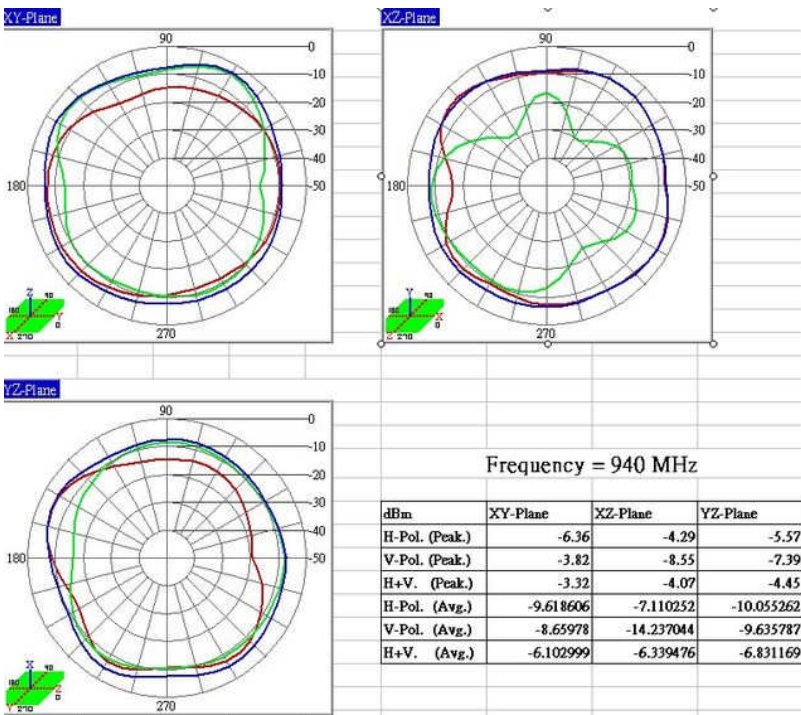




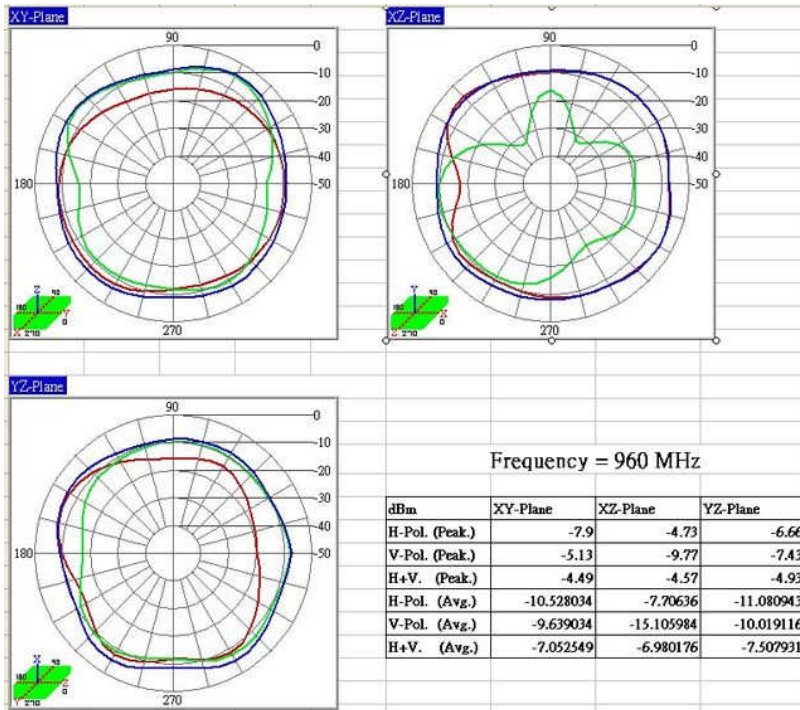
H-Polar █ V-Polar █ H+V-Polar █



H-Polar █ V-Polar █ H+V-Polar █



H-Polar █ V-Polar █ H+V-Polar █



H-Polar █ V-Polar █ H+V-Polar █

