

# Antenna Regulatory Information

• <b>Product type</b>	• <b>WLAN antenna</b>
• <b>Model number</b>	• <b>Paltrow</b>
• <b>Revision</b>	• <b>Rev. 2</b>
• <b>Manufacturer Part No. : Main / Aux / MIMO</b>	• <b>AMP8P-700056/ AMP8P-700055</b>
• <b>Dell Part No. : Main / Aux / MIMO</b>	•



**ADVANCED-CONNECTEK INC.**

**B1, No. 205, Sec. 3, Bei-Hsin Rd., Hsin-Tien**

**Taipei, Taiwan, R.O.C**

**TEL ☐ 886-2-8913-1939**

**FAX ☐ 886-2-8913-2538**

**Http ☐ //www.acon.com**

Template Revision 062007

# 1. Specifications

## Antenna Specifications

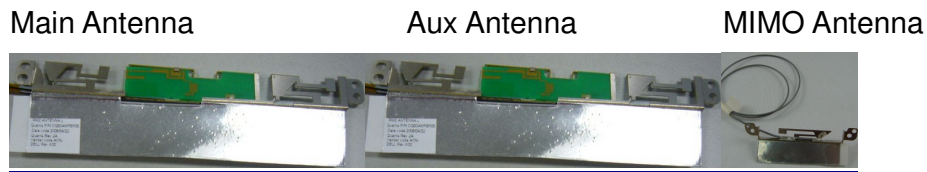
<b>Antenna Type (Material, Technology)</b>	Material, IFA
<b>Antenna Model Number</b>	Paltrow
<b>Operating Frequency Range(s)</b>	2.412GHz ~ 2.462GHz and 5.15GHz ~ 5.875GHz
<b>Peak Gain (802.11b/g / 2.4GHz Band) (dBi)</b>	Main -1.55 / Aux -0.26 / MIMO -1.57
<b>Peak Gain (802.11a / 5GHz Band) (dBi)</b>	Main -0.76 / Aux -0.68 / MIMO 0.66
<b>Radio Connector Type</b>	IPEX 20278-111R-13
<b>Mid-Line Connector Type (If Applicable)</b>	N/A

**Remark:** Peak Gains include all system losses (connector, cable, etc)

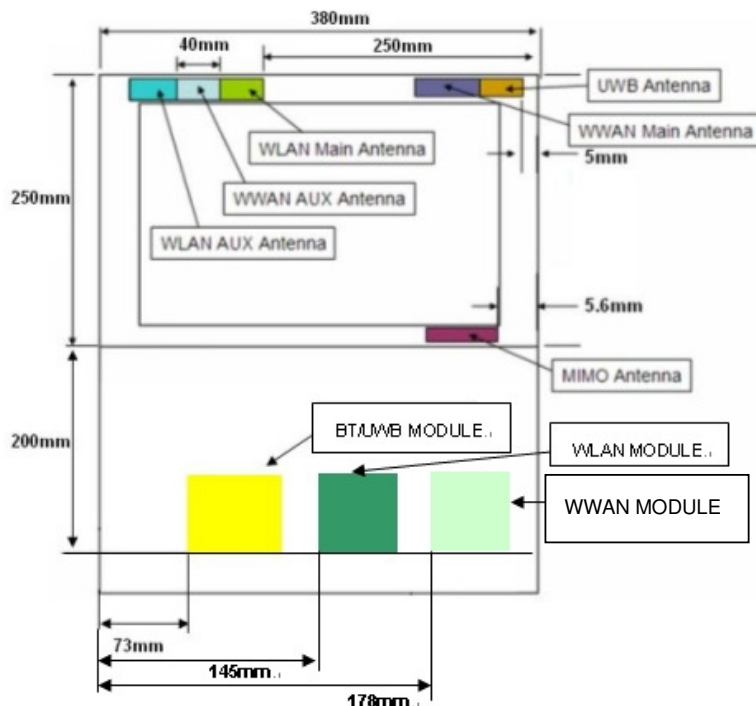
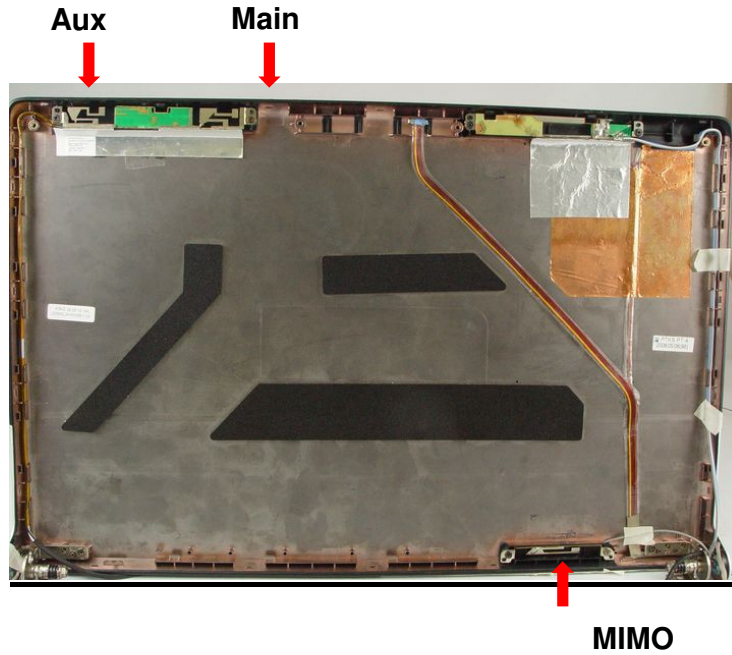
## Cable Specifications

Cable Parameters	Main			Aux			MIMO		
	LCD Side	Base Side	Total	LCD Side	Base Side	Total	LCD Side	Base Side	Total
<b>Length (mm)</b>	N/A	N/A	700	N/A	N/A	639	N/A	N/A	417
<b>Loss (Including Connectors) (dB, 2.4GHz / 5GHz)</b>			2.1 / 3.1			1.8 / 2.9			1.6 / 2.0
<b>Description (Color, Diameter, Manufacturer)</b>	Color: White OD: 1.13 mm (low loss) Vendor: Kurabe/GBE/Sumitomo			Color: Black OD: 1.13 mm (low loss) Vendor: Kurabe/GBE/Sumitomo			Color: Gray OD: 1.13 mm (low loss) Vendor: Kurabe/GBE/Sumitomo		

## 2. Antenna Assembly



## 3. Antenna Assembly Installed in The Notebook





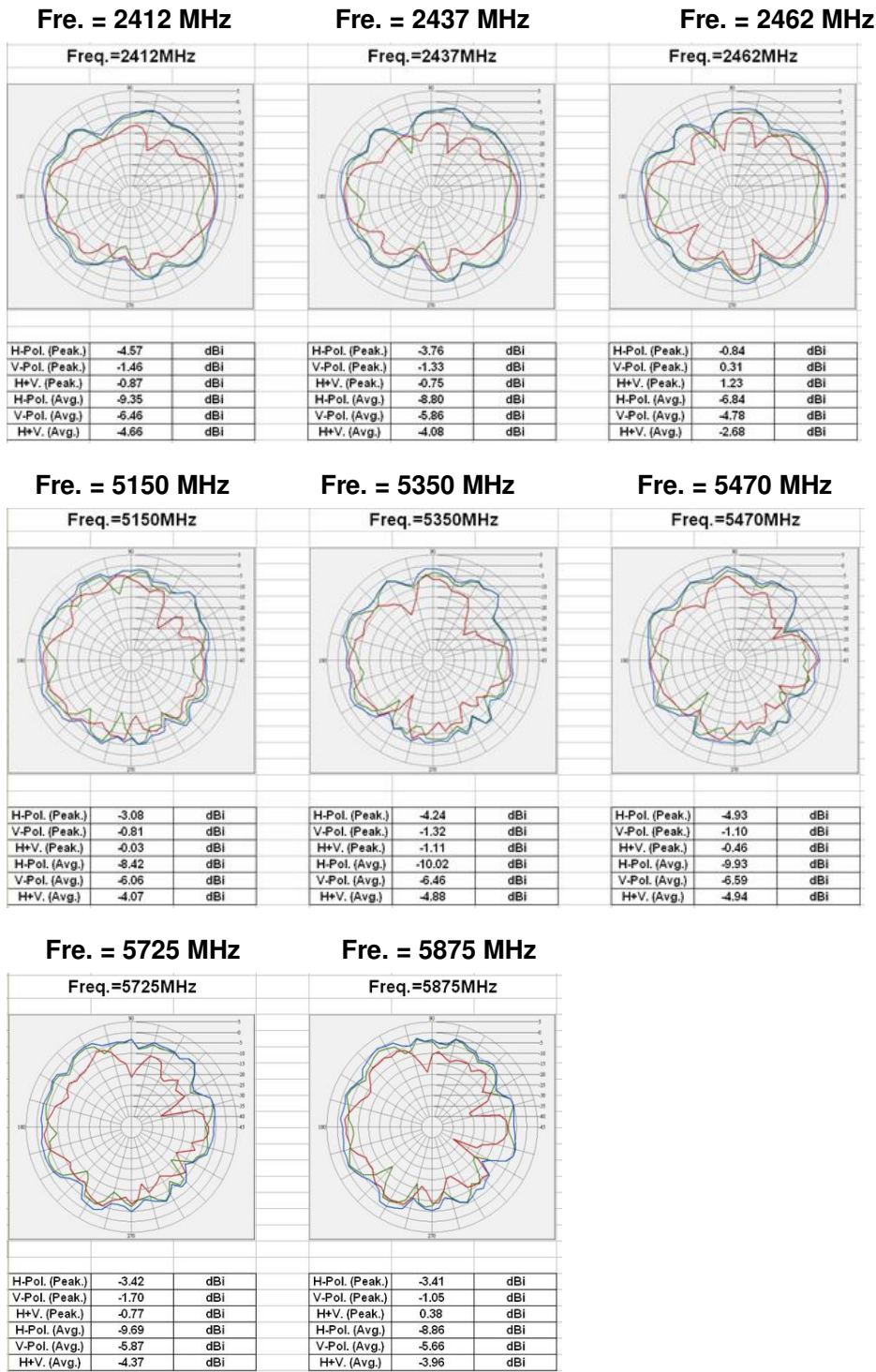


# 5. Gain Patterns

The Most Appropriate Antenna for Your Best Design!



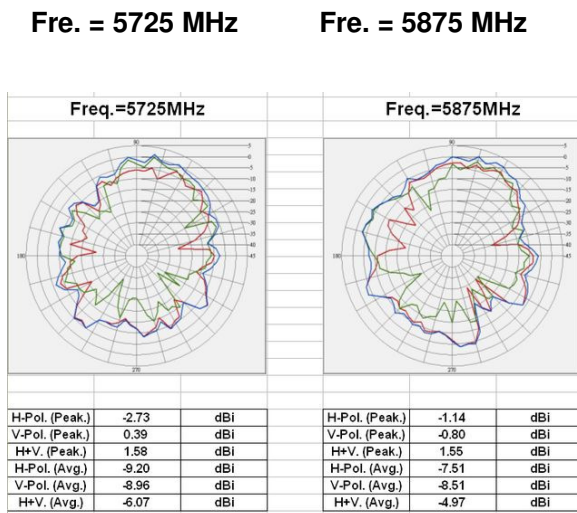
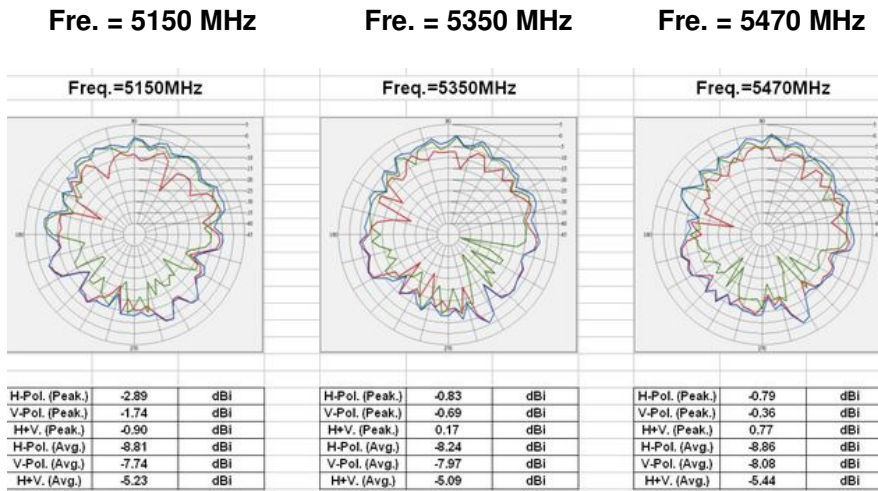
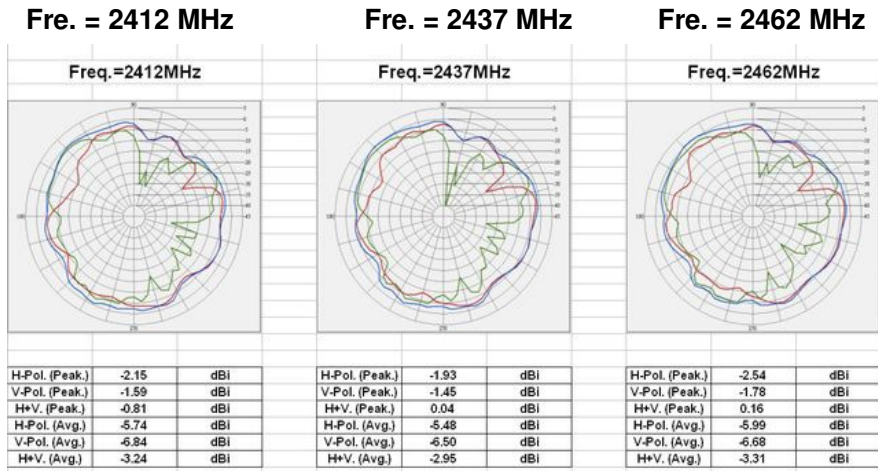
- Main Antenna





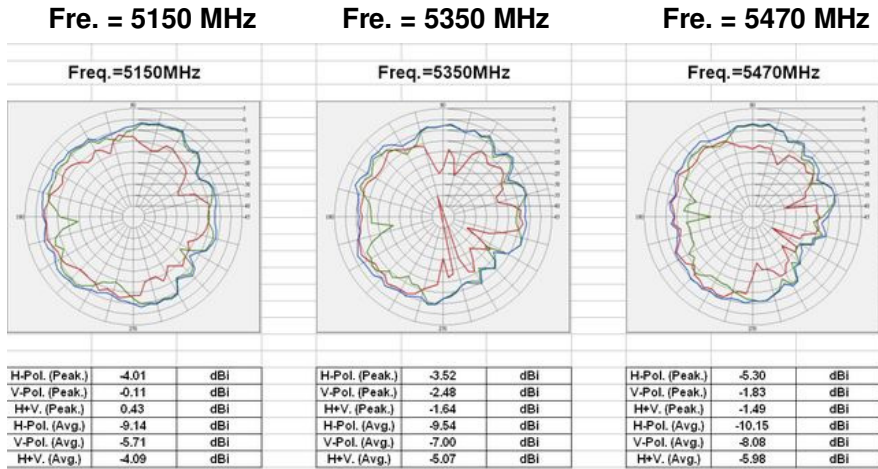
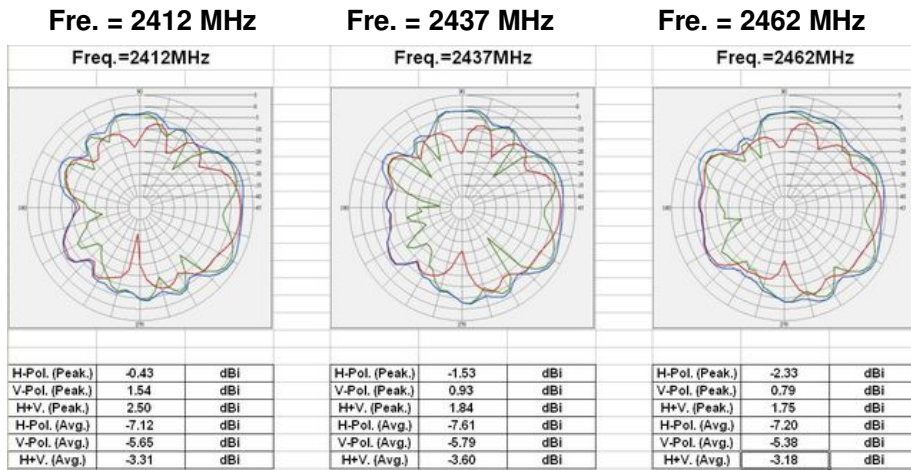
— H-Pol — V-Pol — H+V

- Aux Antenna



— H-Pol — V-Pol — H+V

- MIMO Antenna



Fre. = 5725 MHz      Fre. = 5875 MHz

