



Merlin for CDMA Modem Manager

FCC ID: PKRNVWC201



Safety and Regulatory Notices

This product is not to be used in any environment where radio frequency equipment is prohibited or restricted in its use. This includes aircraft/airports, hospitals, and other sensitive electronic areas. To ensure that your modem is deactivated you should remove it from your computer under the above conditions.

REGULATORY NOTICES

Federal Communications Commission Radio Frequency Interference Statement

This equipment has been certified to comply within the limits of a class B digital device pursuant to part 15 of the FCC Rules. These limits are designed to provide reasonable protection against harmful interference in residential situations. This equipment generates, uses, and can radiate radio frequency energy, and, if not properly installed and used in accordance with the instructions, may cause harmful interference to radio or television reception, which can be determined by turning the equipment on and off. You are encouraged to try to correct the interference by one or more of the following measures:

Reorient or relocate the receiving antenna of the television, radio or cordless telephone.

Increase the separation between the equipment and the receiver.

Connect the equipment to an outlet on a circuit different from that to which the receiver is connected.

Consult the dealer or an experienced radio/television technician for additional suggestions.

Technical Support

If you have any questions or comments about your Merlin, please contact the Novatel Wireless Technical Support team at:

WWW: www.novatelwireless.com/support/index.html

E-mail: support@novatelwireless.com

Phone: 1-888-888-9231

Fax: 1-888-812-2888



Table of Contents

REGULATORY NOTICES	2
Technical Support	2
CDMA Modem Manager	4
Starting Modem Manager	4
Closing Modem Manager	4
Main Window Overview	5
Modem Menu	6
Connections Command	6
Configuration Command	8
Properties Command	9
Activation Command	10
Exit Command	11
Tools Menu	12
Clear Total Bytes Command	12
Detailed Status Report Command	13
Window Menu	15
Always on Top Command	15
Hide Window Command	16
Help Menu	17
CDMA Modem Manager Help Command	17
Novatel Wireless Online Support Command	17
About CDMA Modem Manager Command	18

CDMA Modem Manager

The Merlin for CDMA Modem Manager application provides the user with both control over the modem's operation, and feedback about the status of the modem.

The Modem Manager will automatically detect if the modem is configured for service and will automatically launch the activation wizard upon initiation if the modem is not configured.

Starting Modem Manager

You can open the main window by double-clicking the **Merlin for CDMA** icon, located on the desktop, or by right-clicking on the system tray icon and selecting **Open Wireless Web Modem Manager** from the pop-up menu. See the figure below.



Pop-Up Menu

Closing Modem Manager

To close the Modem Manager window, but maintain the networking session, click the "X", located in the upper-left corner of the Modem Manager main window. The Modem Manager window will then minimize to the tray icon shown below.



System Tray Icon

Remember: Closing the Modem Manager window will not disconnect the modem from the network.

Main Window Overview

The Modem Manager main window consists of the following fields:

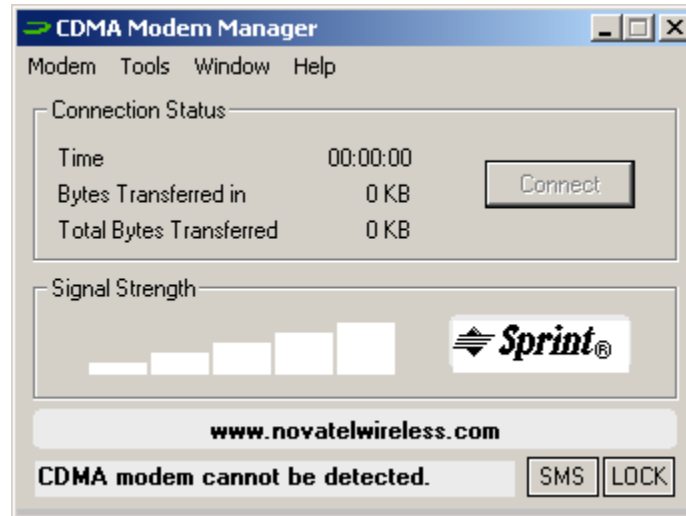
Connection Status:

- **Time** - this field indicates how long the modem has been connected to the network.
- **Bytes Transferred In** - this field indicates the amount of data (bytes) the modem has received during the current network session.
- **Bytes Transferred Out** - this field indicates the amount of data (bytes) the modem has sent during the current network session.
- **Connect/Disconnect** button - this button allows you to **Connect** or **Disconnect** from the network, depending on the current state of the modem. If the modem is connected to the network, the **Disconnect** button will be available. If the modem is not connected to the network, the **Connect** button will be available.

Signal Strength:

- **Signal Strength status bar** - this status bar indicates the modem's signal strength. If an adequate signal strength is present, a number of the five bars will be shaded black. The value of each bar should be equivalent to the typical cell phone. If there is no service available, the field will be blank.
- **Sprint Icon** - clicking on this icon will take you directly to Sprint's home page.
- **Novatel URL** - clicking on www.novatelwireless.com will take you directly to the Sprint PCS web page.
- **Modem status bar** - the status bar, located at the bottom of the Modem Manager window, will display the modem's network connection status.
- **SMS (short message service) button** - this button allows you to send a short text message to another SMS enabled device.
- **Lock button** - this button allows you to set up a phone lock. To unlock your phone, a key code is required.

See the figure on the following page.



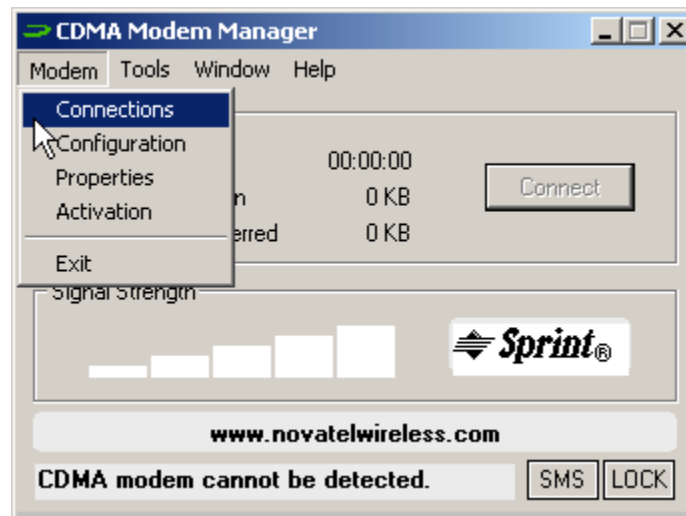
Modem Manager Window

Modem Menu

All commands that directly manipulate or query the modem are available from the **Modem** menu.

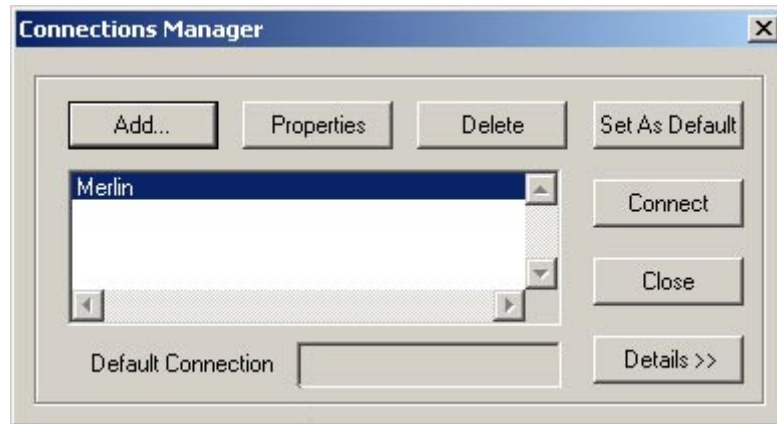
Connections Command

To access this command, select **Connections** from the **Modem** menu, as shown below.



Connections Command

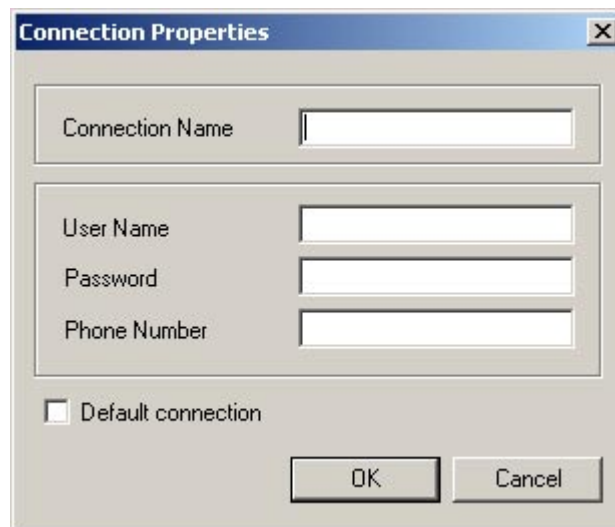
When the **Connections** command is selected, the **Connection Manager** window will open.



Connections Manager Window

You may add or delete connection information from this window. You may also set up the properties and default settings, and review your connection details.

To add a connection, click **Add**. The **Connection Properties** window will open, as shown below. Enter the information for your new connection profile, and click **OK**.



Connection Properties Window

To view a connection profile's properties, highlight the desired connection, and then click **Properties**. The **Connection Properties** window will open, and display the connection profile.

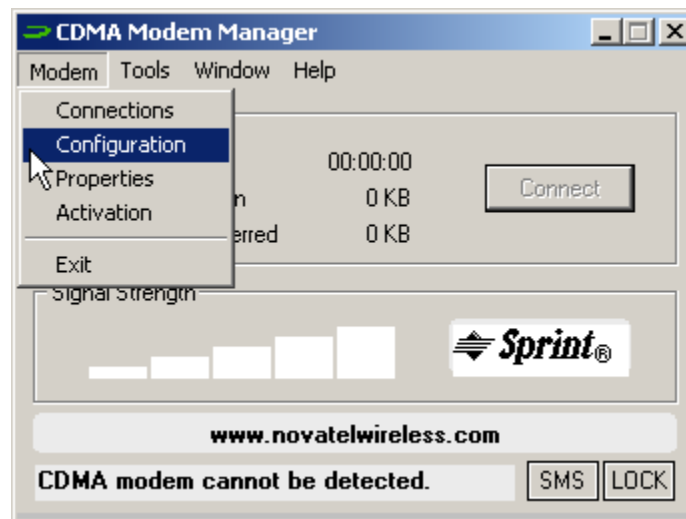
To delete a connection, highlight the connection profile, and click **Delete**.

To set a connection as default, highlight the desired connection profile, and click **Set As Default**.

To connect to the network using a specific connection profile, highlight it and then click **Connect**.

Configuration Command

To access this command, select **Configuration** from the **Modem** menu, as shown below.



Configuration Command

When the **Configuration** command is selected, the **Modem Configuration** window will open.

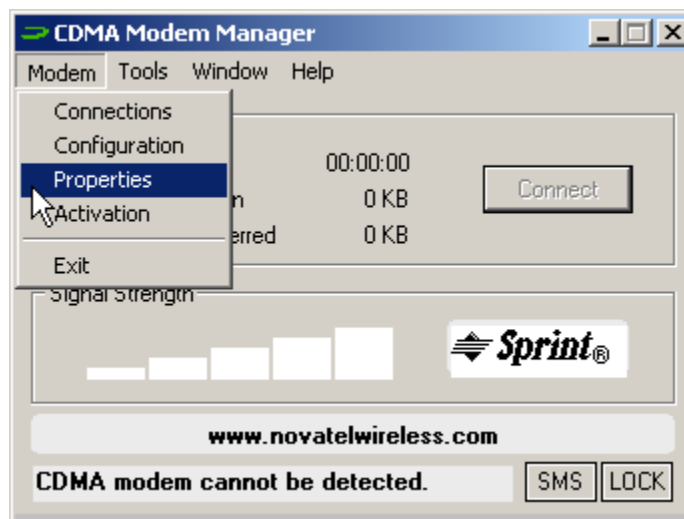


Modem Configuration Window

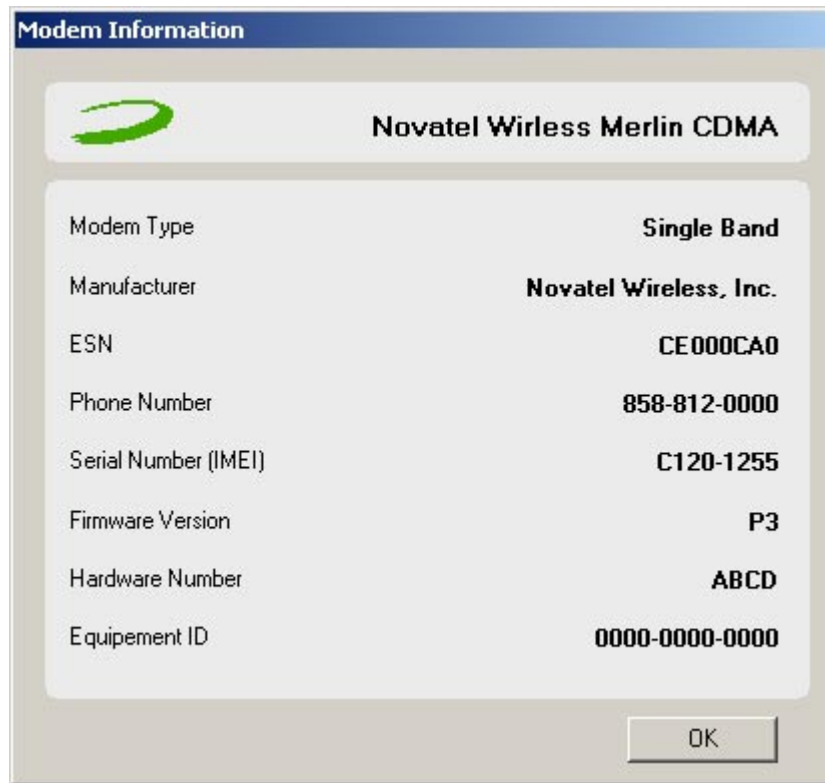
This window allows you to configure and customize your modem. You can change your network service settings, received data type options, and access the phone lock feature from this window. The computer time and local time are also displayed.

Properties Command

To access this command, select **Properties** from the **Modem** menu, as shown below.



When the **Properties** command is selected, the **Modem Information** window will open.



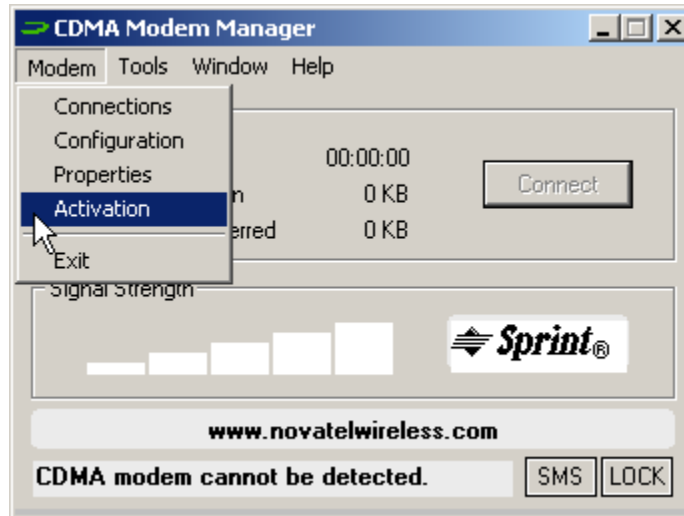
Modem Information Window

The information displayed in this window can be helpful for customer support in diagnosing any problems you have with your modem.

Activation Command

Note: The Activation Wizard will automatically launch if the modem has not yet been activated.

To access this command, select **Activation** from the **Modem** menu, as shown on the following page.



Activation Command

When the **Activation** command is selected, the Activation Wizard launches. Follow the step-by-step instructions in order to set up your wireless CDMA modem account.

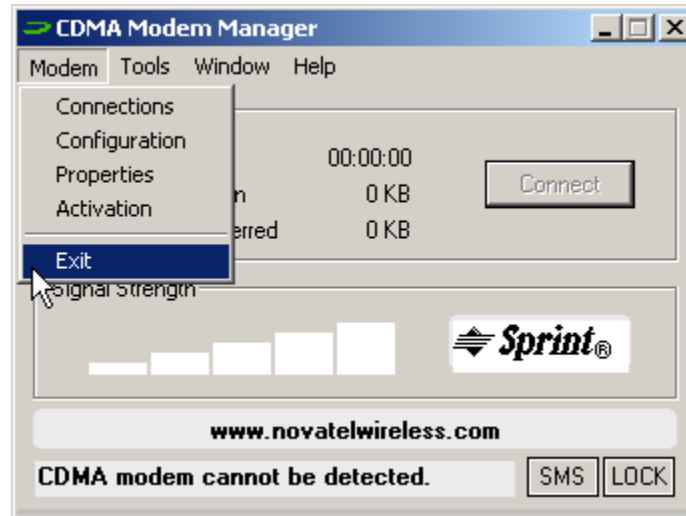
You should have the following information available:

- Your billing address,
- Your Social Security number or your Tax ID number, and
- Your driver's license number.

Your CDMA wireless modem will be ready for use in approximately one hour after the call is completed.

Exit Command

To access this command select, **Exit** from the **Modem** menu, as shown on the following page.



Exit Command

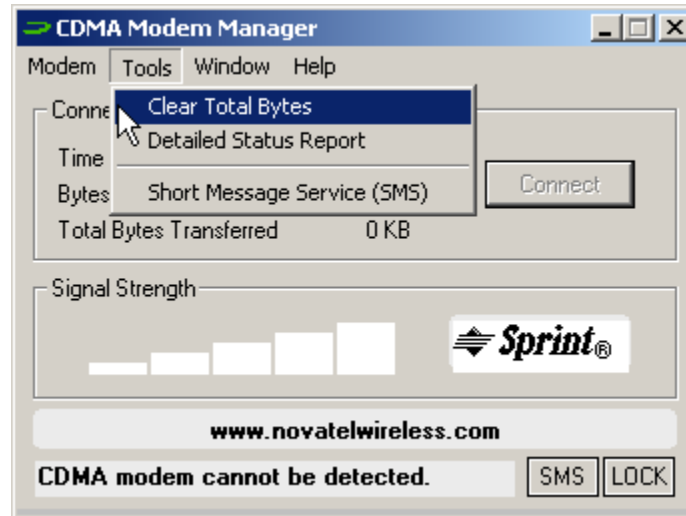
When the **Exit** command is selected, the current network session is disabled, and the Modem Manager application will close, removing the tray icon and main window from view.

Tools Menu

All commands that manipulate or query the modem in order to diagnose a problem or test out the modem and/or its connection are available from the **Tools** menu.

Clear Total Bytes Command

To access this command, select **Clear Total Bytes** from the **Tools** menu, as shown on the following page.

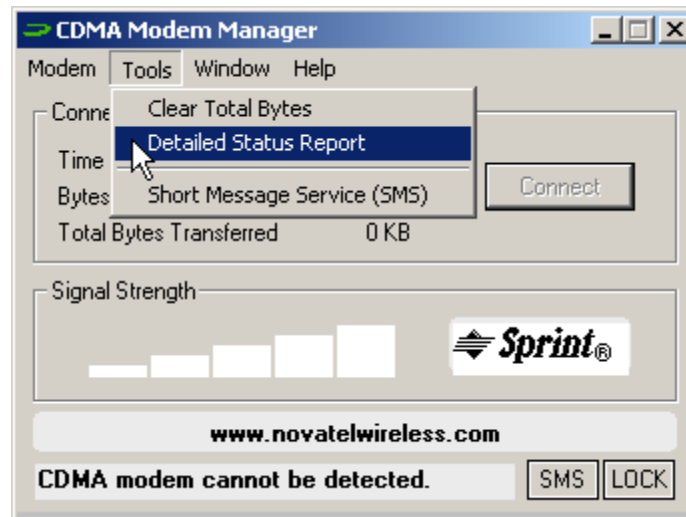


Clear Total Bytes Command

When the **Clear Total Bytes** command is selected, all byte totals are cleared from the modem's memory.

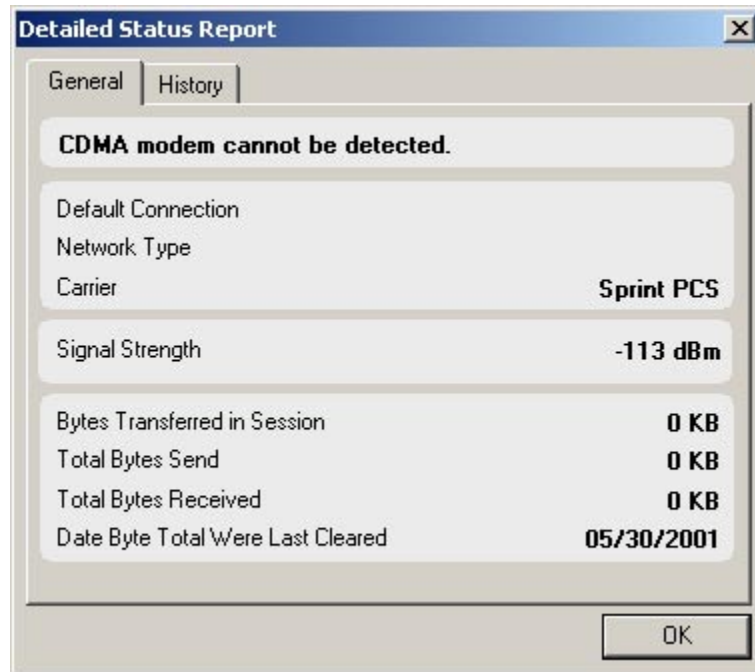
Detailed Status Report Command

To access this command, select, **Detailed Status Report** from the **Tools** menu, as shown below.



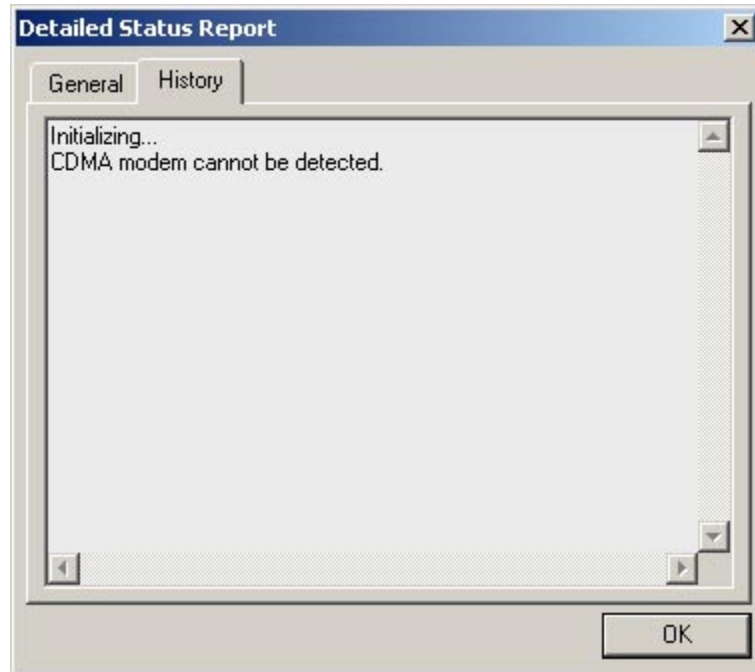
Detailed Status Report Command

When this command is selected, the **Detailed Status Report** window will open and display the modem's various parameters, such as phone number, signal strength, roaming status, carrier, and call status in the **General** tab, shown below..



General Tab

Click the **History** tab to view the connection status history, as shown on the following page.



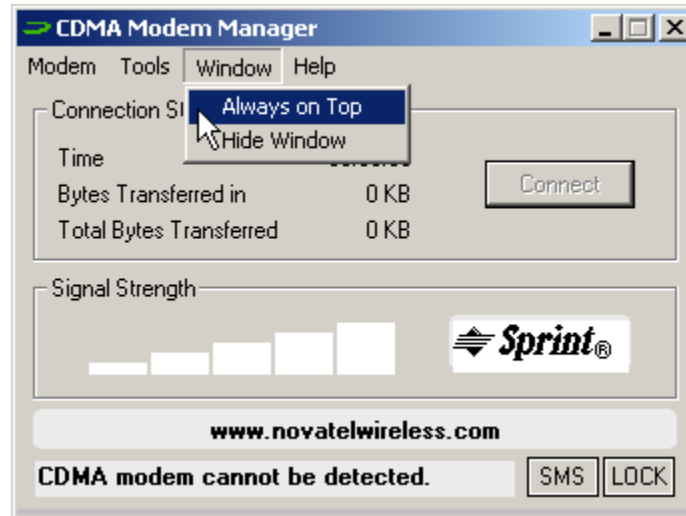
History Tab

Window Menu

All commands that involve the placement of the Modem Manager window on the desktop are available from the **Window** menu.

Always on Top Command

To access this command, select **Always on Top** from the **Window** menu, as shown on the following page.

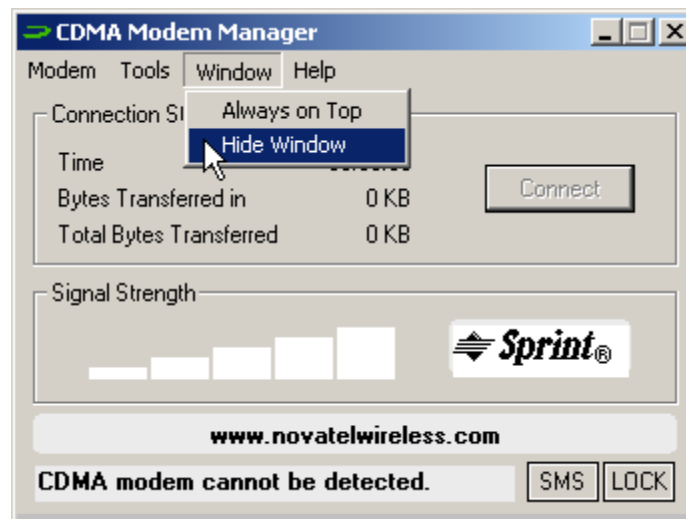


Always on Top Command

When selected, the Modem Manager window will always be displayed on top of all other application windows. A check mark beside the command indicates if the option is enabled.

Hide Window Command

To access this command, select **Hide Window** from the **Window** menu, as shown below.



Hide Window Command

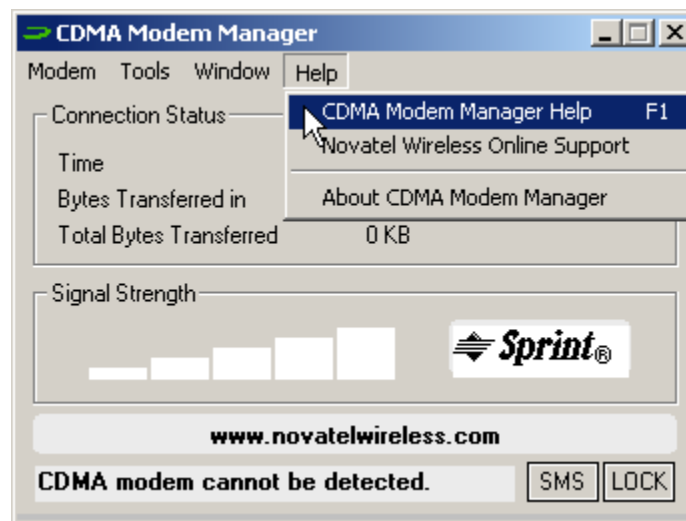
When this command is selected, the Modem Manager window is closed, but the system tray icon will remain visible. The modem's network connection is not altered by this process.

Help Menu

All commands that involve information about the Modem Manager application including the online help are available from the **Help** menu.

CDMA Modem Manager Help Command

To access this command, select **CDMA Modem Manager Help** from the **Help** menu, as shown below.

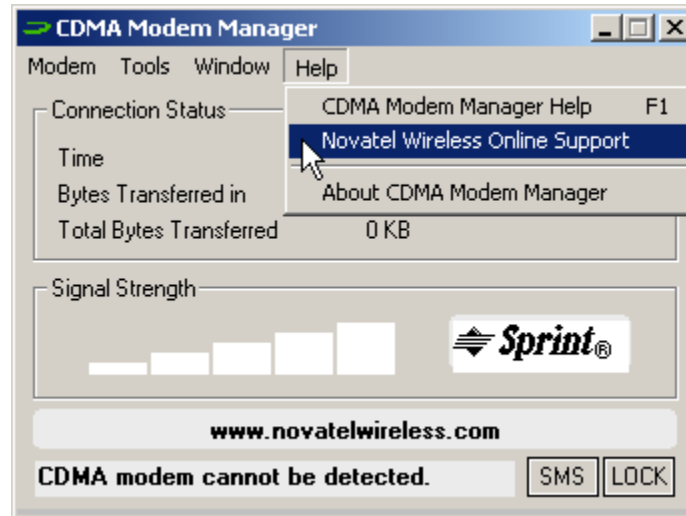


CDMA Modem Manager Help Command

When this command is selected, the online Modem Manager Help is launched.

Novatel Wireless Online Support Command

To access this command, select **Novatel Wireless Online Support** from the **Help** menu, as shown on the following page.

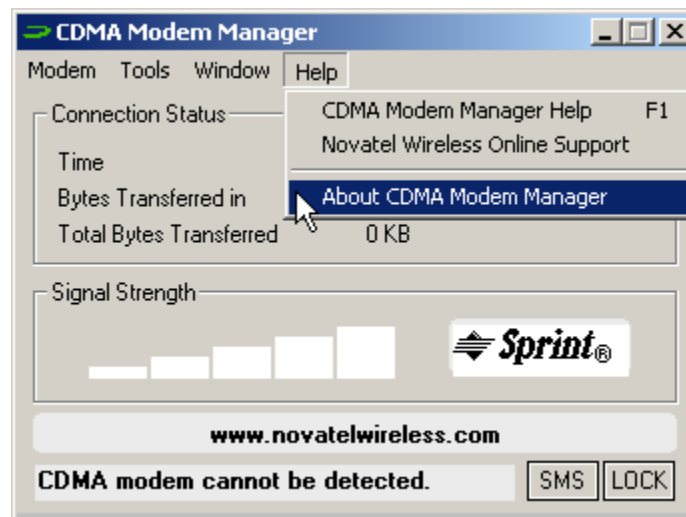


Novatel Wireless Online Support Command

When this command is selected, the Novatel Wireless website is launched. The web site will provide support for problems you may be experiencing with your modem.

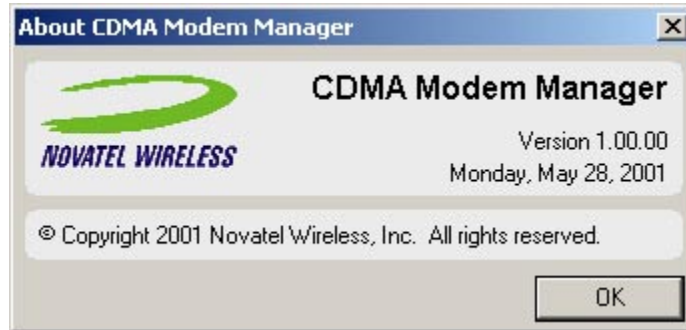
About CDMA Modem Manager Command

To access this command, select **About CDMA Modem Manager** from the **Help** menu, as shown below.



About CDMA Modem Manager Command

When this command is selected, the **About Modem Manager** window will open, and display the Modem Manager software version, copyright date, release date, and contact information. See the figure below.



About Modem Manager Window

Index

A

About CDMA Modem Manager Command	15
Activation Command.....	9
Always on Top Command.....	13

C

CDMA Modem Manager Help Command	14
Clear Total Bytes Command.....	10
Closing Modem Manager.....	3
Configuration Command	6
Connections Command	5

D

Detailed Status Report Command	11
--------------------------------------	----

E

Exit Command	10
--------------------	----

H

Hide Window Command	14
---------------------------	----

I

Introduction	2
--------------------	---

M

Main Window Overview	3
----------------------------	---

N

Novatel Wireless Online Support Command	15
---	----

P

Properties Command.....	7
-------------------------	---

S

Starting Modem Manager	2
------------------------------	---