

Test Laboratory: Sporton International Inc.

Device Under Test Properties

Manufacturer	Dimensions [mm]	IMEI	DUT Type
	149.0 x 70.0 x 12.5		Hotspot

Exposure Conditions

Phantom Section	Position, Test Distance [mm]	Frequency [MHz]	Conversion Factor
5G	EDGE TOP, 10.00	27925.0	1.0

Hardware Setup

Phantom	Medium	Probe, Calibration Date	DAE, Calibration Date
mmWave - xxxx	Air -	EUmmWV4 - SN9461_F1-78GHz, 2019-11-05	DAE4 Sn778, 2020-06-04

Scans Setup

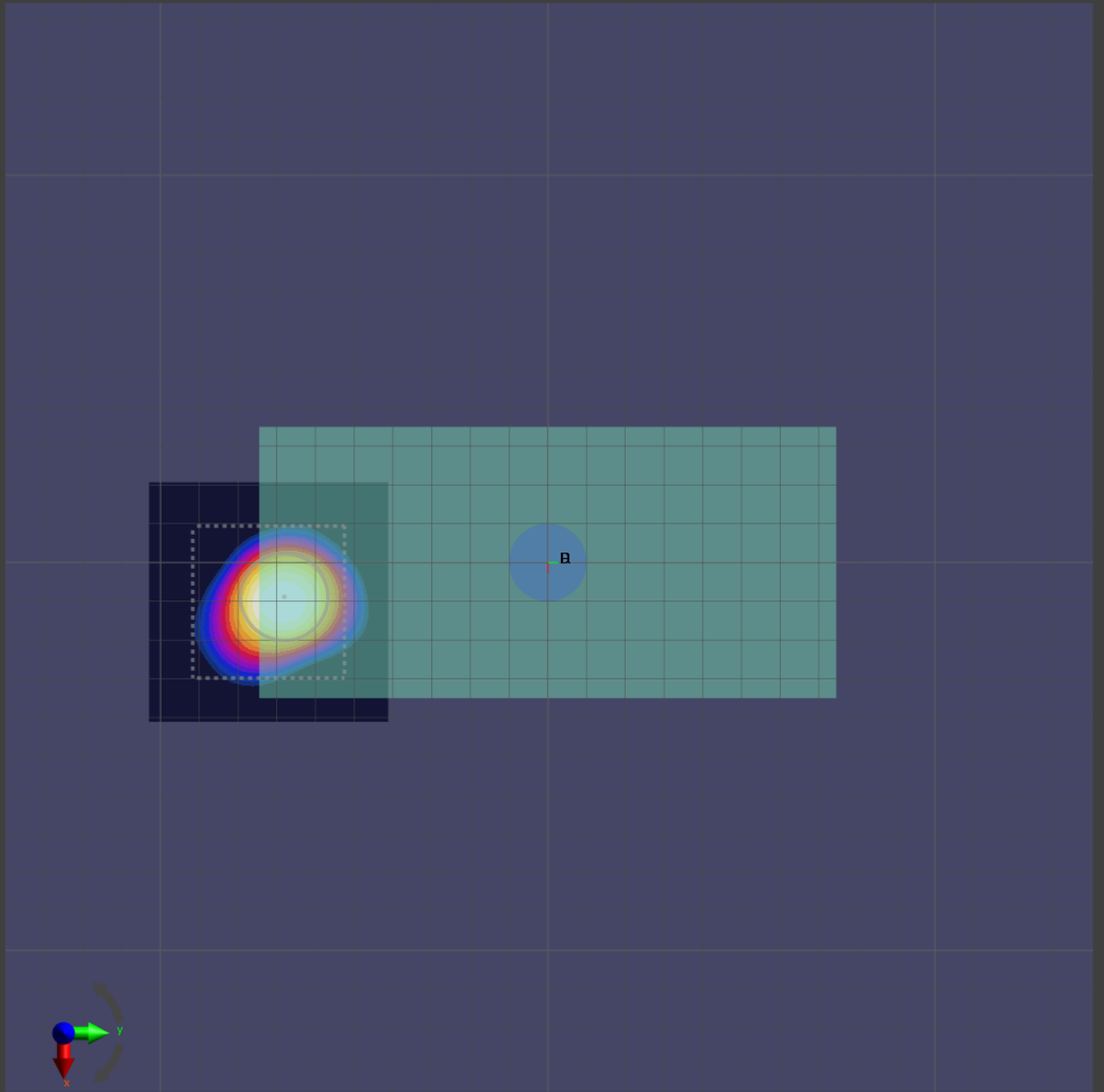
Grid Extents [mm]	60.0 x 60.0
Grid Steps [λ]	0.25 x 0.25
Sensor Surface [mm]	10.0

Measurement Results

Date	2020-10-09, 10:41
Avg. Area [cm^2]	4.00
$S_{\text{avg inc}}$ [W/m^2]	2.68
$S_{\text{avg tot}}$ [W/m^2]	3.27
S_{peak} [W/m^2]	9.13
E_{peak} [V/m]	58.1
H_{peak} [A/m]	0.158
Power Drift [dB]	-0.06

Averaged [4.0 cm²] |Re{S}|(x,y,z,f0) [dB(3.27W/m²)]

0



-10

Test Laboratory: Sporton International Inc.

Device Under Test Properties

Manufacturer	Dimensions [mm]	IMEI	DUT Type
	149.0 x 70.0 x 12.5		Hotspot

Exposure Conditions

Phantom Section	Position, Test Distance [mm]	Frequency [MHz]	Conversion Factor
5G	EDGE TOP, 10.00	37050.0	1.0

Hardware Setup

Phantom	Medium	Probe, Calibration Date	DAE, Calibration Date
mmWave - xxxx	Air -	EUmmWV4 - SN9461_F1-78GHz, 2019-11-05	DAE4 Sn778, 2020-06-04

Scans Setup

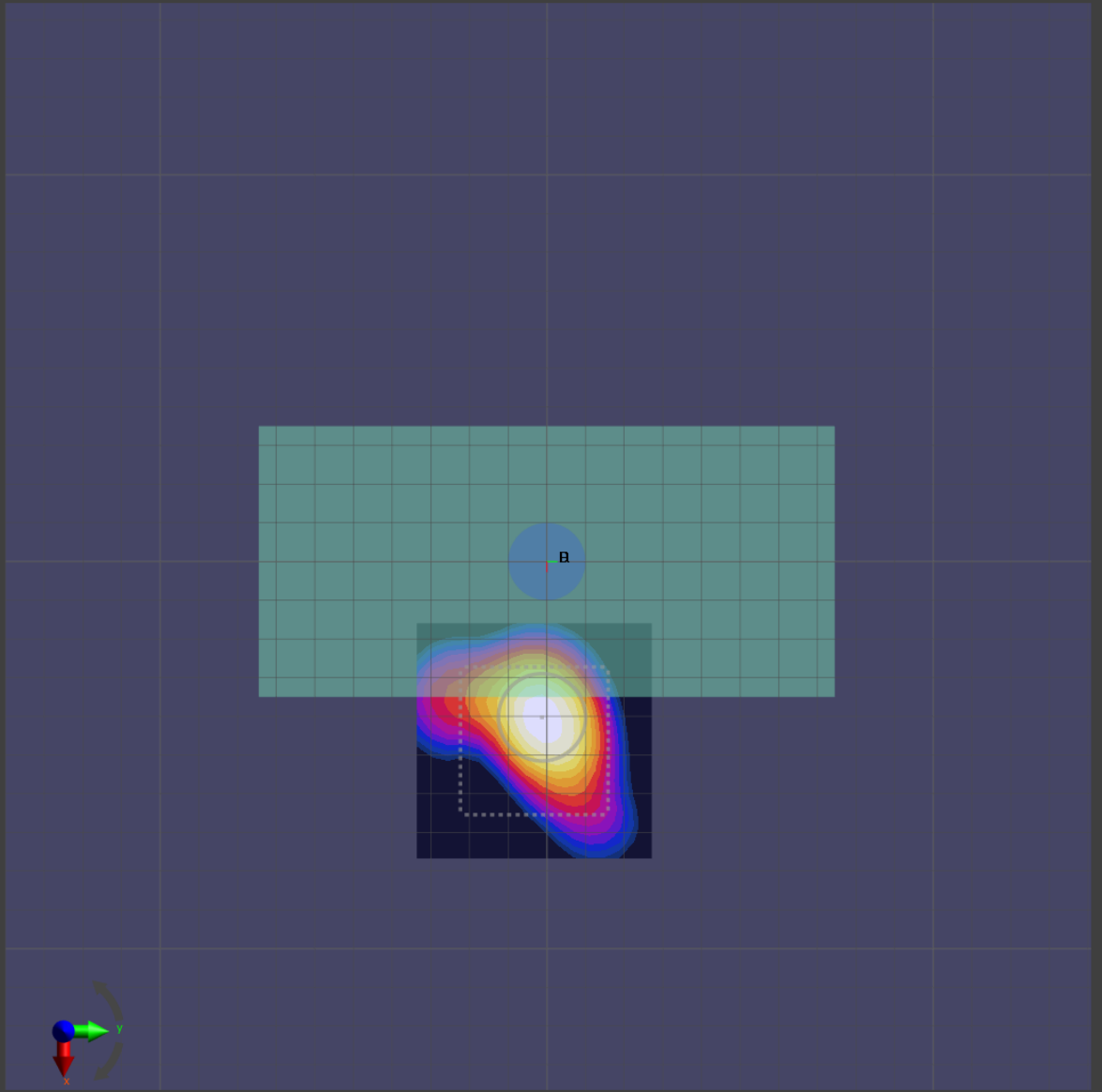
Grid Extents [mm]	60.0 x 60.0
Grid Steps [λ]	0.25 x 0.25
Sensor Surface [mm]	10.0

Measurement Results

Date	2020-10-09, 14:12
Avg. Area [cm^2]	4.00
$S_{\text{avg inc}}$ [W/m^2]	1.36
$S_{\text{avg tot}}$ [W/m^2]	1.68
S_{peak} [W/m^2]	3.32
E_{peak} [V/m]	38.8
H_{peak} [A/m]	0.091
Power Drift [dB]	-0.02

Averaged [4.0 cm²] |Re{S}|(x,y,z,f0) [dB(1.68W/m²)]

0



-10