

Test Laboratory: Sporton International Inc.

Device Under Test Properties

Manufacturer	Dimensions [mm]	IMEI	DUT Type
	149.0 x 70.0 x 12.5		Hotspot

Exposure Conditions

Phantom Section	Position, Test Distance [mm]	Frequency [MHz]	Conversion Factor
5G	EDGE TOP, 10.00	27900.0	1.0

Hardware Setup

Phantom	Medium	Probe, Calibration Date	DAE, Calibration Date
mmWave - xxxx	Air -	EUmmWV4 - SN9461_F1-78GHz, 2019-11-05	DAE4 Sn1424, 2020-01-24

Scans Setup

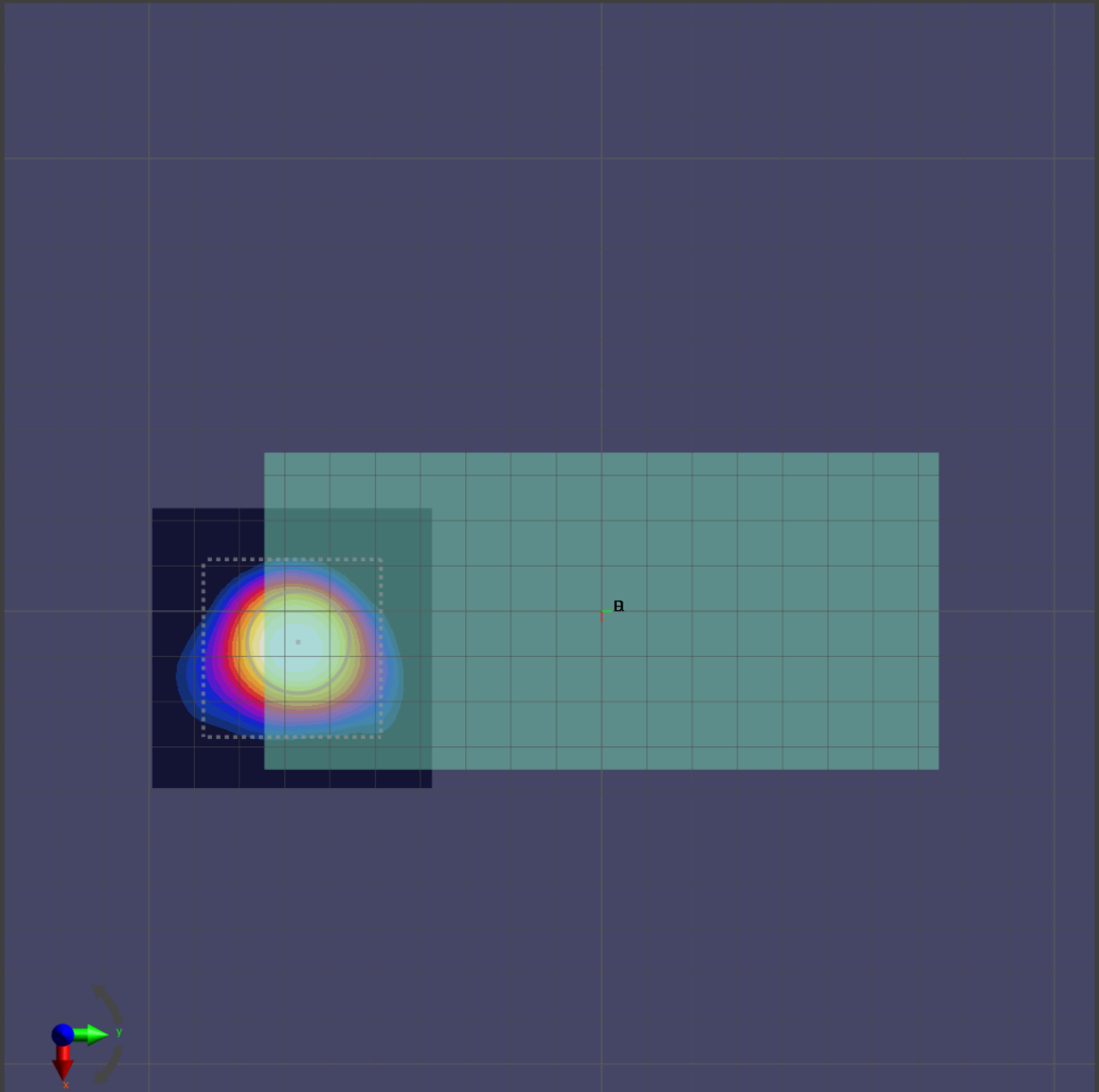
Grid Extents [mm]	60.0 x 60.0
Grid Steps [λ]	0.25 x 0.25
Sensor Surface [mm]	10.0

Measurement Results

Date	2020-07-17, 11:20
Avg. Area [cm^2]	4.00
$S_{\text{avg inc}}$ [W/m^2]	2.96
$S_{\text{avg tot}}$ [W/m^2]	3.72
S_{peak} [W/m^2]	10.5
E_{peak} [V/m]	62.2
H_{peak} [A/m]	0.170
Power Drift [dB]	-0.00

Averaged [4.0 cm²] |Re{S}|(x,y,z,f0) [dB(3.72W/m²)]

0



-10

Test Laboratory: Sporton International Inc.

Device Under Test Properties

Manufacturer	Dimensions [mm]	IMEI	DUT Type
	149.0 x 70.0 x 12.5		Hotspot

Exposure Conditions

Phantom Section	Position, Test Distance [mm]	Frequency [MHz]	Conversion Factor
5G	FRONT, 10.00	37000.0	1.0

Hardware Setup

Phantom	Medium	Probe, Calibration Date	DAE, Calibration Date
mmWave - xxxx	Air -	EUmmWV4 - SN9461_F1-78GHz, 2019-11-05	DAE4 Sn1424, 2020-01-24

Scans Setup

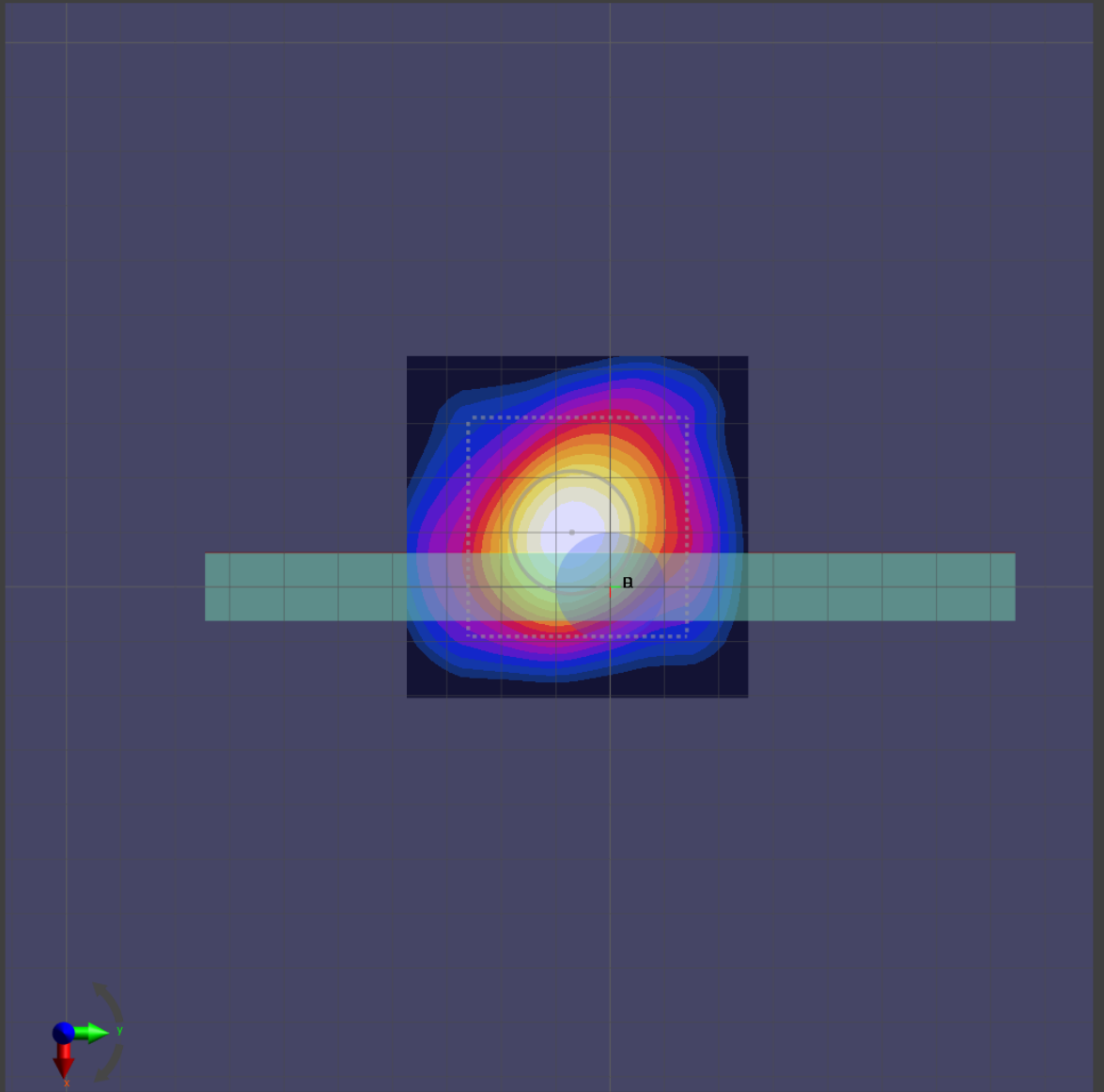
Grid Extents [mm]	60.0 x 60.0
Grid Steps [lambda]	0.25 x 0.25
Sensor Surface [mm]	10.0

Measurement Results

Date	2020-07-17, 15:56
Avg. Area [cm ²]	4.00
S _{avg inc} [W/m ²]	3.35
S _{avg tot} [W/m ²]	3.59
S _{peak} [W/m ²]	6.70
E _{peak} [V/m]	52.3
H _{peak} [A/m]	0.128
Power Drift [dB]	-0.14

Averaged [4.0 cm²] |Re{S}|(x,y,z,f0) [dB(3.59W/m²)]

0



-10