

Test Laboratory: Sporton International Inc.

Device Under Test Properties

Manufacturer	Dimensions [mm]	IMEI	DUT Type
	100.0 x 100.0 x 100.0		Phone

Exposure Conditions

Phantom Section	Position, Test Distance [mm]	Frequency [MHz]	Conversion Factor
5G	FRONT, 5.55	30000.0	1.0

Hardware Setup

Phantom	Medium	Probe, Calibration Date	DAE, Calibration Date
mmWave - xxxx	Air -	EUmmWV4 - SN9461_F1-78GHz, 2019-11-05	DAE4 Sn1424, 2020-01-24

Scans Setup

Grid Extents [mm]	60.0 x 60.0
Grid Steps [lambda]	0.25 x 0.25
Sensor Surface [mm]	5.55

Measurement Results

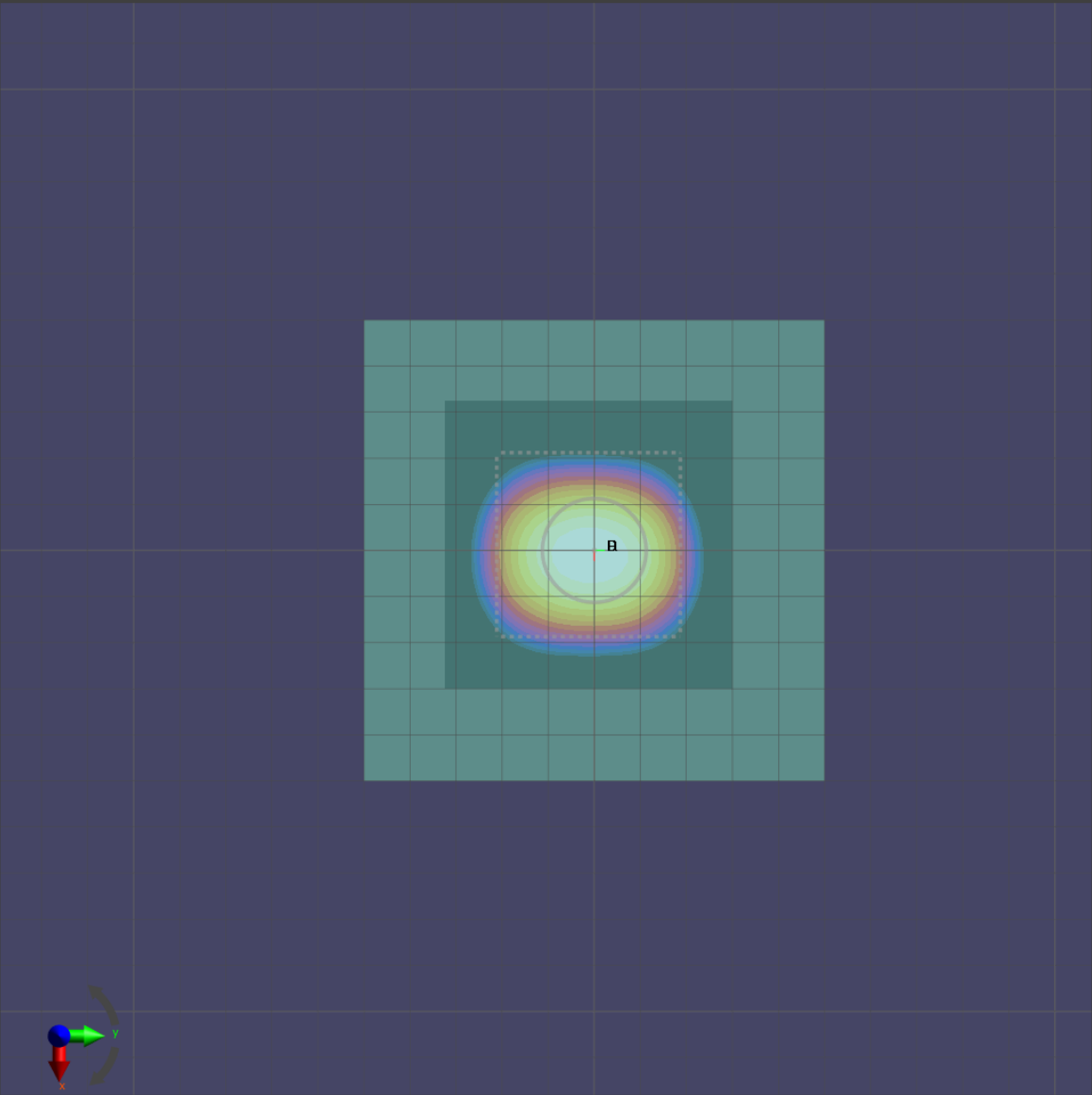
Date	2020-05-31, 01:13
Avg. Area [cm ²]	4.00
S _{avg inc} [W/m ²]	30.7
S _{avg tot} [W/m ²]	31.2
S _{peak} [W/m ²]	45.2
E _{peak} [V/m]	130
H _{peak} [A/m]	0.351
Power Drift [dB]	-0.04

Averaged [4.0 cm²] |Re{S}|(x,y,z,f0) [dB(31.2W/m²)]

0



-10



Test Laboratory: Sporton International Inc.

Device Under Test Properties

Manufacturer	Dimensions [mm]	IMEI	DUT Type
	100.0 x 100.0 x 100.0		Phone

Exposure Conditions

Phantom Section	Position, Test Distance [mm]	Frequency [MHz]	Conversion Factor
5G	FRONT, 5.55	30000.0	1.0

Hardware Setup

Phantom	Medium	Probe, Calibration Date	DAE, Calibration Date
mmWave - xxxx	Air -	EUmmWV4 - SN9461_F1-78GHz, 2019-11-05	DAE4 Sn1424, 2020-01-24

Scans Setup

Grid Extents [mm]	60.0 x 60.0
Grid Steps [λ]	0.25 x 0.25
Sensor Surface [mm]	5.55

Measurement Results

Date	2020-06-16, 06:26
Avg. Area [cm^2]	4.00
$S_{\text{avg inc}}$ [W/m^2]	32.5
$S_{\text{avg tot}}$ [W/m^2]	33.1
S_{peak} [W/m^2]	48.1
E_{peak} [V/m]	132
H_{peak} [A/m]	0.365
Power Drift [dB]	-0.01

Averaged [4.0 cm²] |Re{S}|(x,y,z,f0) [dB(33.1W/m²)]

0



-20



Test Laboratory: Sporton International Inc.

Device Under Test Properties

Manufacturer	Dimensions [mm]	IMEI	DUT Type
	100.0 x 100.0 x 100.0		Phone

Exposure Conditions

Phantom Section	Position, Test Distance [mm]	Frequency [MHz]	Conversion Factor
5G	FRONT, 5.55	30000.0	1.0

Hardware Setup

Phantom	Medium	Probe, Calibration Date	DAE, Calibration Date
mmWave - xxxx	Air -	EUmmWV4 - SN9461_F1-78GHz, 2019-11-05	DAE4 Sn1424, 2020-01-24

Scans Setup

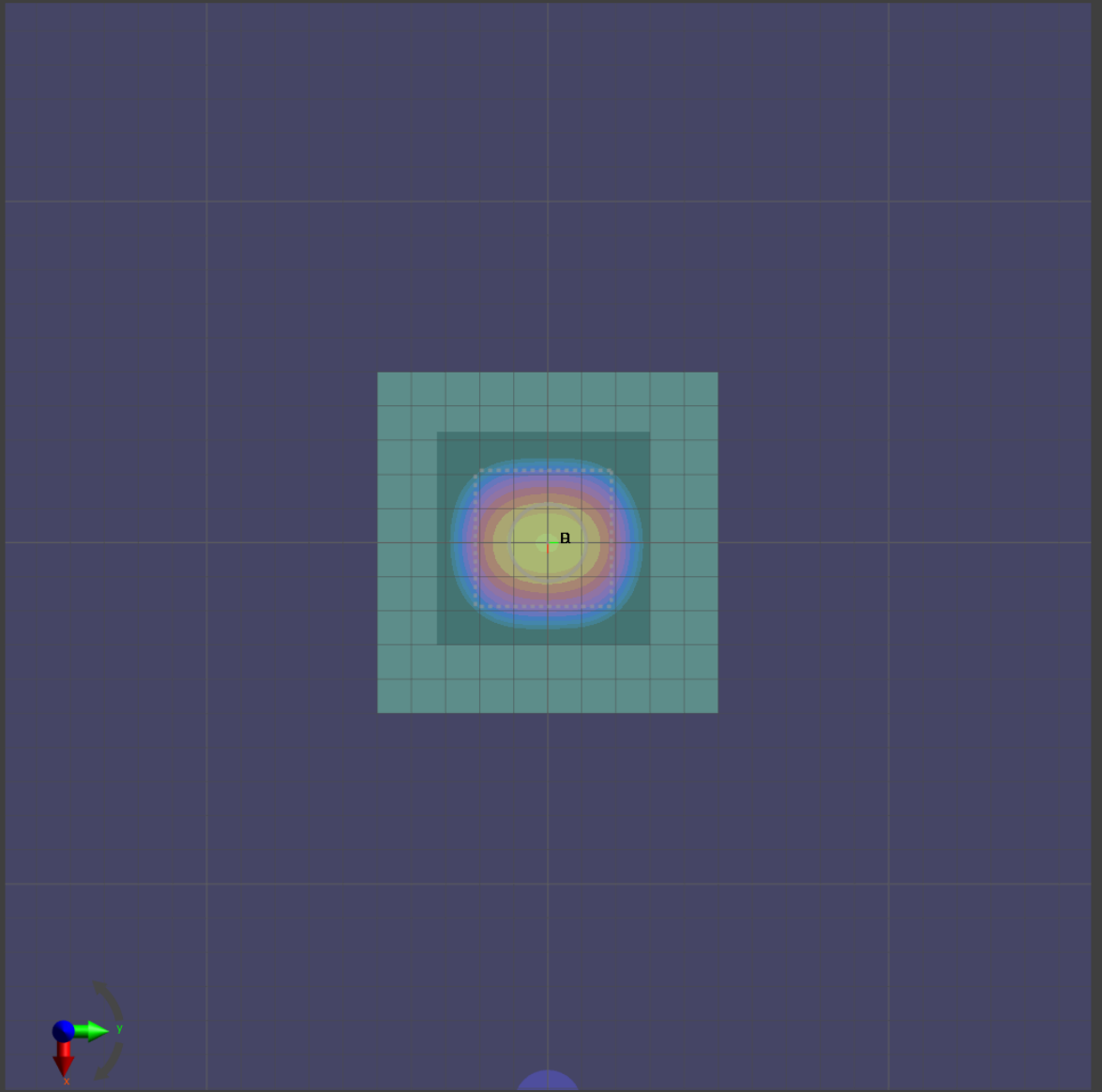
Grid Extents [mm]	60.0 x 60.0
Grid Steps [lambda]	0.25 x 0.25
Sensor Surface [mm]	5.55

Measurement Results

Date	2020-06-19, 13:56
Avg. Area [cm ²]	4.00
S _{avg inc} [W/m ²]	31.7
S _{avg tot} [W/m ²]	32.1
S _{peak} [W/m ²]	47.7
E _{peak} [V/m]	131
H _{peak} [A/m]	0.364
Power Drift [dB]	0.02

Averaged [4.0 cm²] |Re{S}|(x,y,z,f0) [dB(131W/m²)]

0



-20

Test Laboratory: Sporton International Inc.

Device Under Test Properties

Manufacturer	Dimensions [mm]	IMEI	DUT Type
	100.0 x 100.0 x 100.0		Phone

Exposure Conditions

Phantom Section	Position, Test Distance [mm]	Frequency [MHz]	Conversion Factor
5G	FRONT, 5.55	30000.0	1.0

Hardware Setup

Phantom	Medium	Probe, Calibration Date	DAE, Calibration Date
mmWave - xxxx	Air -	EUmmWV4 - SN9461_F1-78GHz, 2019-11-05	DAE4 Sn1424, 2020-01-24

Scans Setup

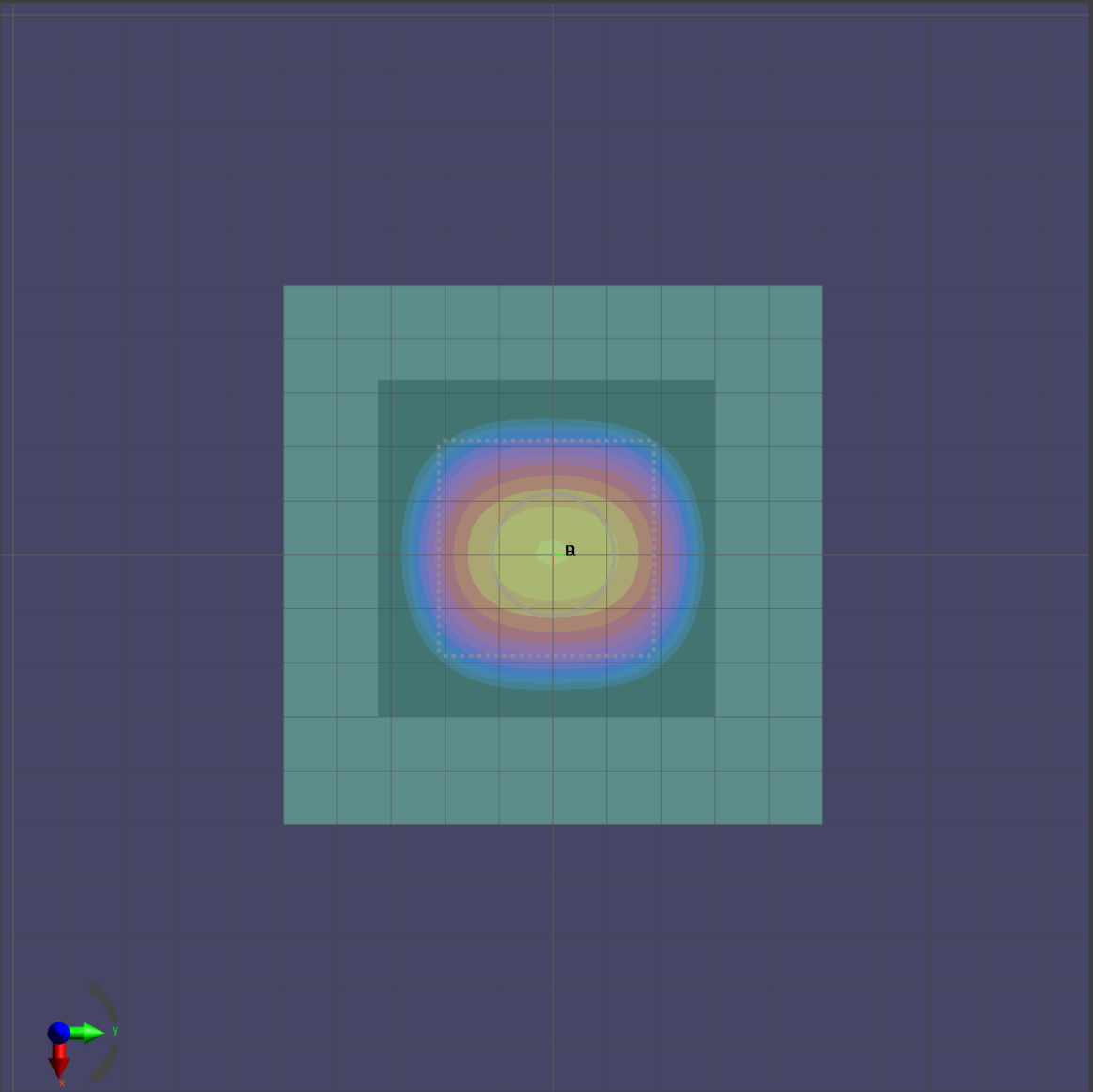
Grid Extents [mm]	60.0 x 60.0
Grid Steps [lambda]	0.25 x 0.25
Sensor Surface [mm]	5.55

Measurement Results

Date	2020-07-16, 15:10
Avg. Area [cm ²]	4.00
S _{avg inc} [W/m ²]	31.3
S _{avg tot} [W/m ²]	31.8
S _{peak} [W/m ²]	47.7
E _{peak} [V/m]	131
H _{peak} [A/m]	0.366
Power Drift [dB]	-0.01

Averaged [4.0 cm²] |Re{S}|(x,y,z,f0) [dB(131W/m²)]

0



-20