

Test Laboratory: Sporton International Inc.

Device Under Test Properties

Manufacturer	Dimensions [mm]	IMEI	DUT Type
	149.0 x 70.0 x 12.5		Hotspot

Exposure Conditions

Phantom Section	Position, Test Distance [mm]	Frequency [MHz]	Conversion Factor
5G	EDGE TOP, 10.00	27900.0	1.0

Hardware Setup

Phantom	Medium	Probe, Calibration Date	DAE, Calibration Date
mmWave - xxxx	Air -	EUmmWV4 - SN9461_F1-78GHz, 2019-11-05	DAE4 Sn1424, 2020-01-24

Scans Setup

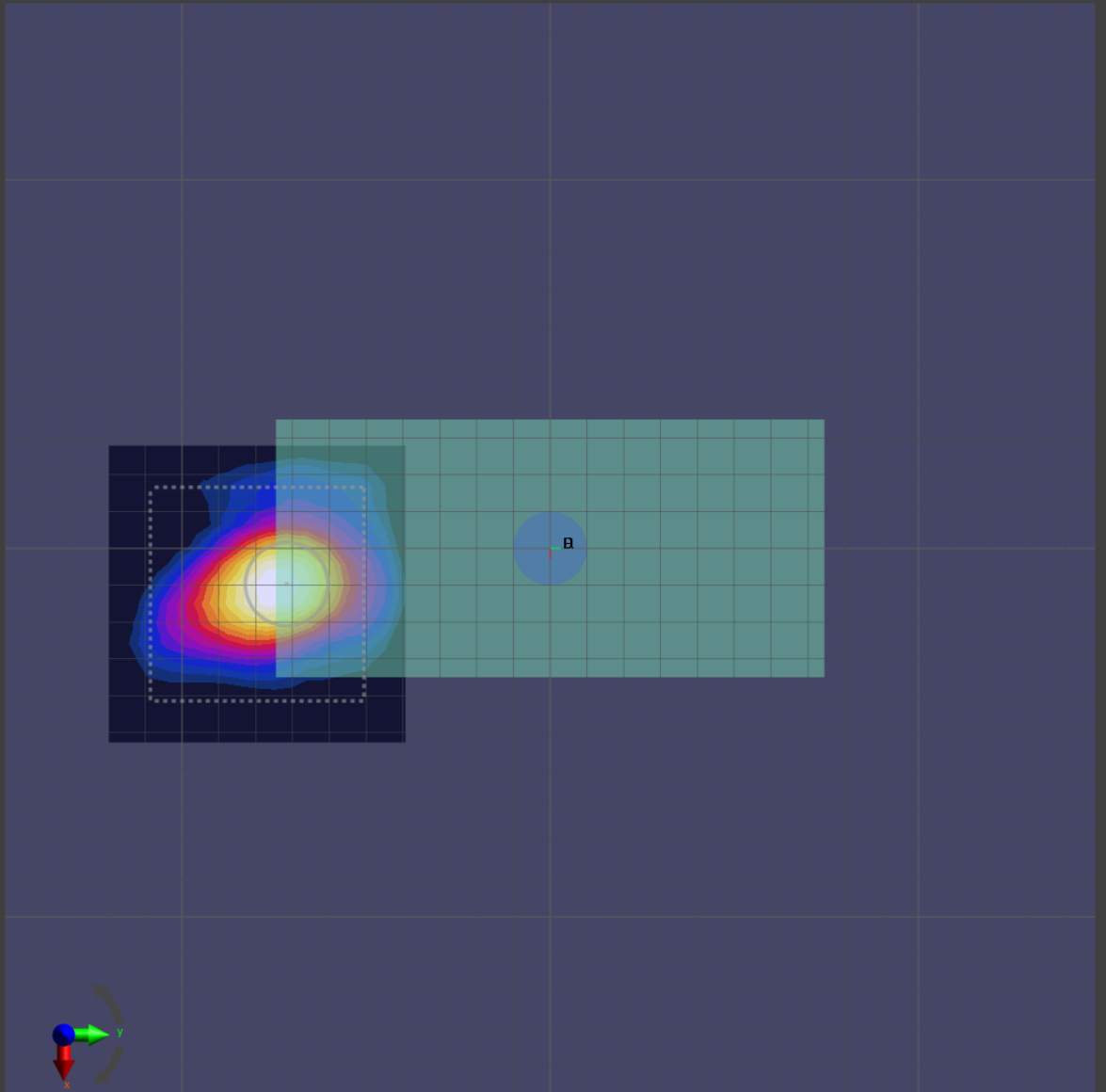
Grid Extents [mm]	60.0 x 60.0
Grid Steps [lambda]	0.25 x 0.25
Sensor Surface [mm]	10.0

Measurement Results

Date	2020-08-12, 17:10
Avg. Area [cm ²]	4.00
S _{avg inc} [W/m ²]	2.72
S _{avg tot} [W/m ²]	3.26
S _{peak} [W/m ²]	7.85
E _{peak} [V/m]	56.5
H _{peak} [A/m]	0.140
Power Drift [dB]	0.06

Averaged [4.0 cm²] |Re{S}|(x,y,z,f0) [dB(3.26W/m²)]

0



-10

Test Laboratory: Sporton International Inc.

Device Under Test Properties

Manufacturer	Dimensions [mm]	IMEI	DUT Type
	149.0 x 70.0 x 12.5		Hotspot

Exposure Conditions

Phantom Section	Position, Test Distance [mm]	Frequency [MHz]	Conversion Factor
5G	FRONT, 10.00	37000.0	1.0

Hardware Setup

Phantom	Medium	Probe, Calibration Date	DAE, Calibration Date
mmWave - xxxx	Air -	EUmmWV4 - SN9461_F1-78GHz, 2019-11-05	DAE4 Sn1424, 2020-01-24

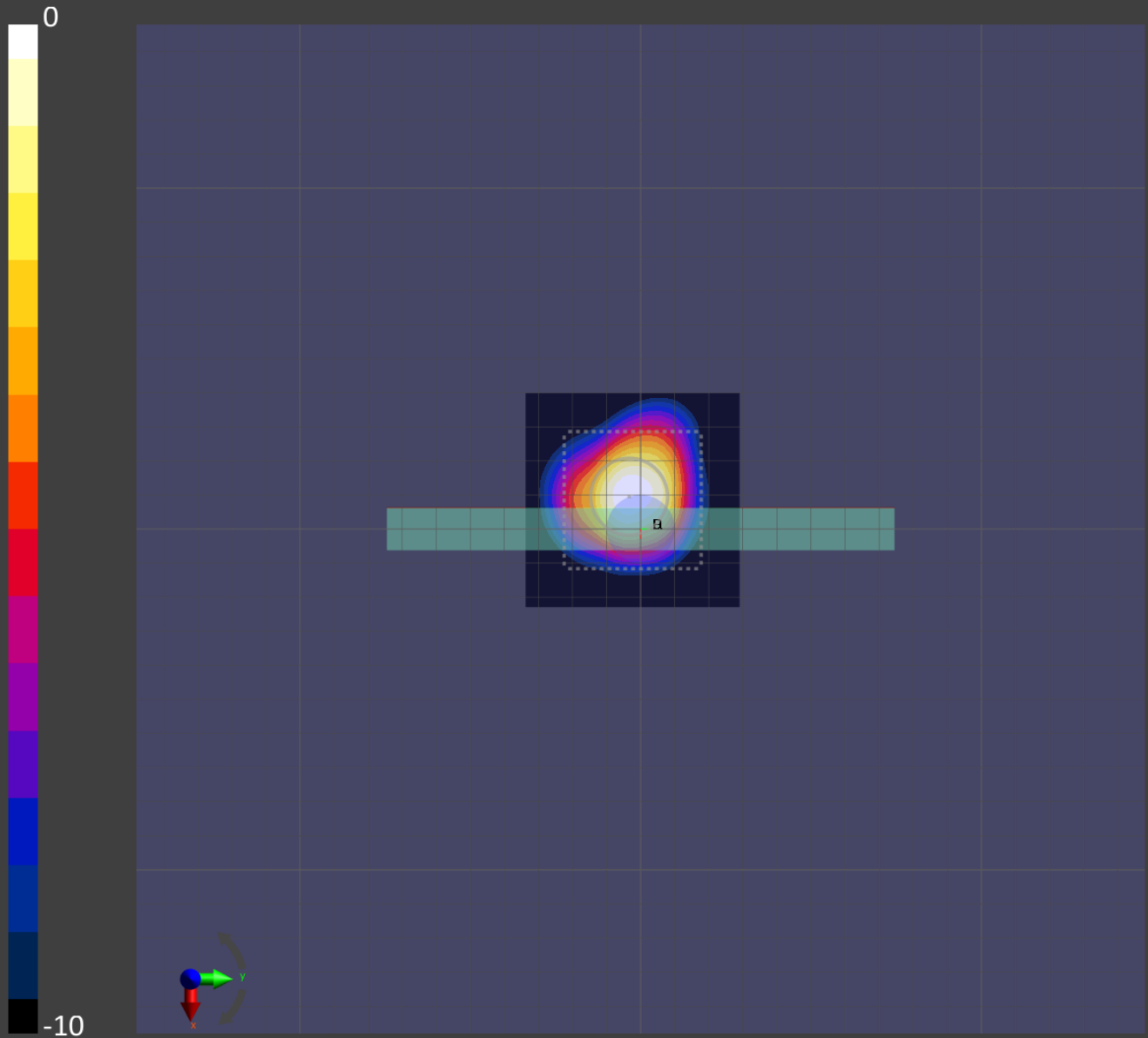
Scans Setup

Grid Extents [mm]	60.0 x 60.0
Grid Steps [lambda]	0.25 x 0.25
Sensor Surface [mm]	10.0

Measurement Results

Date	2020-08-14, 10:56
Avg. Area [cm ²]	4.00
S _{avg inc} [W/m ²]	3.08
S _{avg tot} [W/m ²]	3.27
S _{peak} [W/m ²]	7.29
E _{peak} [V/m]	52.4
H _{peak} [A/m]	0.144
Power Drift [dB]	0.09

Averaged [4.0 cm²] |Re{S}|(x,y,z,f0) [dB(3.27W/m²)]



Test Laboratory: Sporton International Inc.

Device Under Test Properties

Manufacturer	Dimensions [mm]	IMEI	DUT Type
	149.0 x 70.0 x 12.5		Hotspot

Exposure Conditions

Phantom Section	Position, Test Distance [mm]	Frequency [MHz]	Conversion Factor
5G	TOP, 10.00	24750.0	1.0

Hardware Setup

Phantom	Medium	Probe, Calibration Date	DAE, Calibration Date
mmWave - xxxx	Air -	EUmmWV4 - SN9461_F1-78GHz, 2020-11-24	DAE4 Sn376, 2020-11-23

Scans Setup

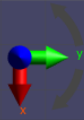
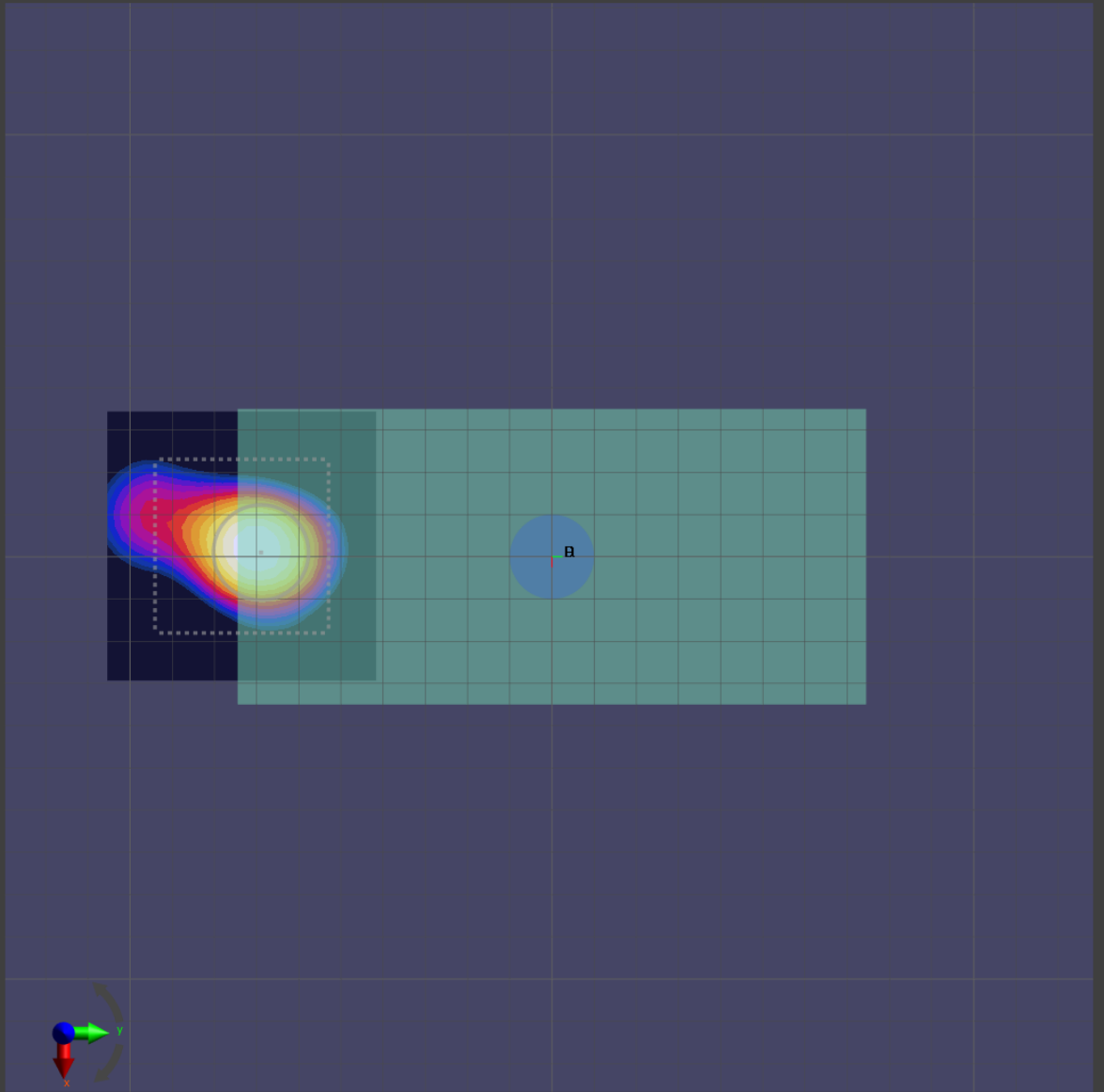
Grid Extents [mm]	60.0 x 60.0
Grid Steps [lambda]	0.25 x 0.25
Sensor Surface [mm]	10.0

Measurement Results

Date	2021-01-17, 17:07
Avg. Area [cm ²]	4.00
S _{avg inc} [W/m ²]	3.93
S _{avg tot} [W/m ²]	4.42
S _{peak} [W/m ²]	10.2
E _{peak} [V/m]	64.1
H _{peak} [A/m]	0.162
Power Drift [dB]	0.10

Averaged [4.0 cm²] |Re{S}|(x,y,z,f0) [dB(4.42W/m²)]

0



-10