

Test Laboratory: Sporton International Inc.

Device Under Test Properties

Manufacturer	Dimensions [mm]	IMEI	DUT Type
	100.0 x 100.0 x 100.0		Verification Source

Exposure Conditions

Phantom Section	Position, Test Distance [mm]	Frequency [MHz]	Conversion Factor1.0
5G	FRONT, 5.55	30000.0	

Hardware Setup

Phantom	Medium	Probe, Calibration Date	DAE, Calibration Date
mmWave - xxxx	Air -	EUmmWV4 - SN9461_F1-78GHz, 2019-11-05	DAE4 Sn1424, 2020-01-24

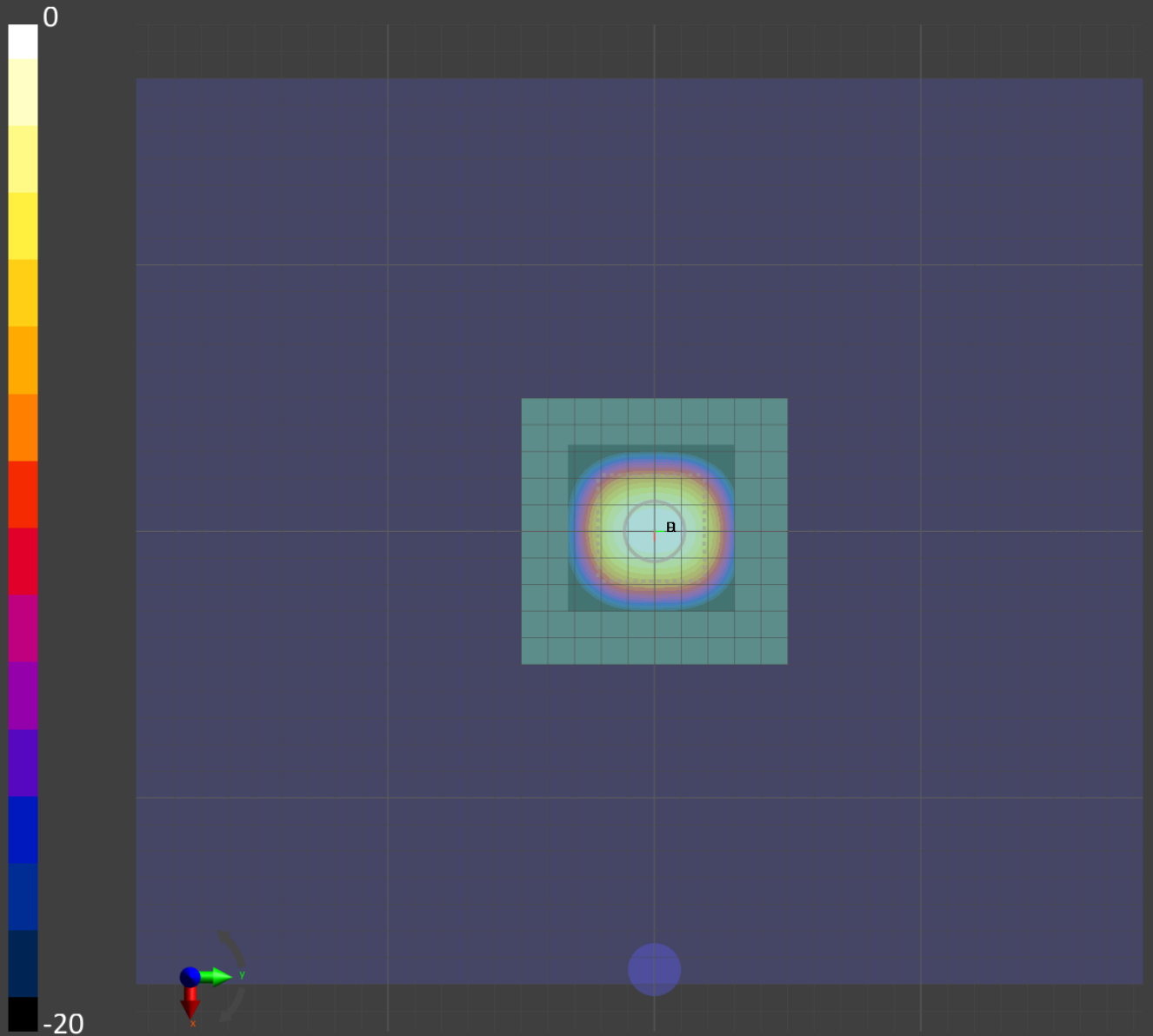
Scans Setup

Grid Extents [mm]	60.0 x 60.0
Grid Steps [lambda]	0.25 x 0.25
Sensor Surface [mm]	5.55

Measurement Results

Date	2020-07-27, 01:10
Avg. Area [cm ²]	4.00
S _{avg inc} [W/m ²]	31.3
S _{avg tot} [W/m ²]	31.8
S _{peak} [W/m ²]	47.7
E _{peak} [V/m]	131
H _{peak} [A/m]	0.366
Power Drift [dB]	-0.01

Averaged [4.0 cm²] |Re{S}|(x,y,z,f0) [dB(31.8W/m²)]



Test Laboratory: Sporton International Inc.

Device Under Test Properties

Manufacturer	Dimensions [mm]	IMEI	DUT Type
	100.0 x 100.0 x 100.0		Verification Source

Exposure Conditions

Phantom Section	Position, Test Distance [mm]	Frequency [MHz]	Conversion Factor1.0
5G	FRONT, 5.50	30000.0	

Hardware Setup

Phantom	Medium	Probe, Calibration Date	DAE, Calibration Date
mmWave - xxxx	Air -	EUmmWV4 - SN9461_F1-78GHz, 2019-11-05	DAE4 Sn1424, 2020-01-24

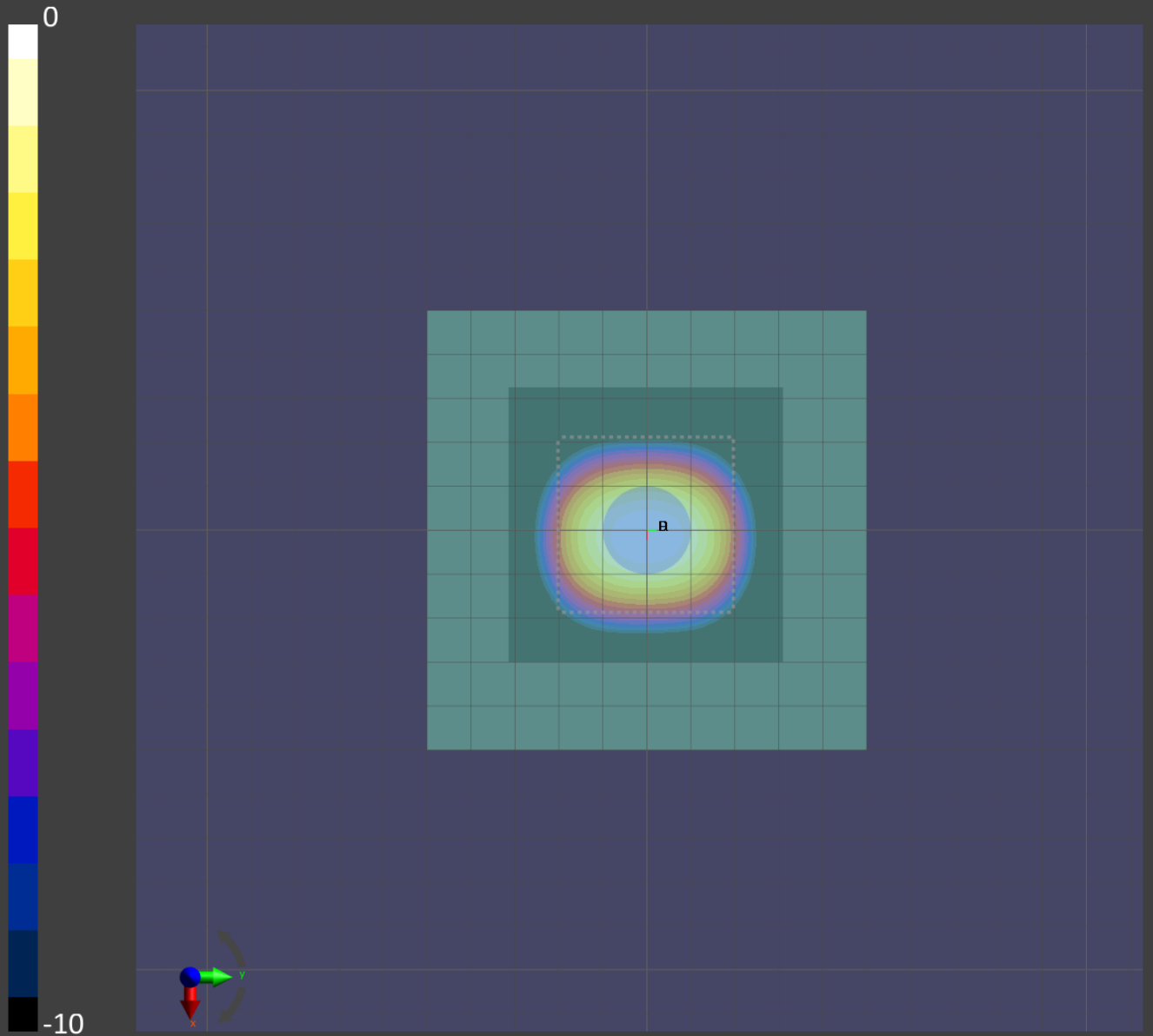
Scans Setup

Grid Extents [mm]	60.0 x 60.0
Grid Steps [lambda]	0.25 x 0.25
Sensor Surface [mm]	5.5

Measurement Results

Date	2020-08-11, 13:23
Avg. Area [cm ²]	4.00
S _{avg inc} [W/m ²]	31.0
S _{avg tot} [W/m ²]	31.5
S _{peak} [W/m ²]	46.2
E _{peak} [V/m]	129
H _{peak} [A/m]	0.361
Power Drift [dB]	-0.07

Averaged [4.0 cm²] |Re{S}|(x,y,z,f0) [dB(31.5W/m²)]



Test Laboratory: Sporton International Inc.

Device Under Test Properties

Manufacturer	Dimensions [mm]	IMEI	DUT Type
	100.0 x 100.0 x 100.0		Verification Source

Exposure Conditions

Phantom Section	Position, Test Distance [mm]	Frequency [MHz]	Conversion Factor1.0
5G	FRONT, 5.50	30000.0	

Hardware Setup

Phantom	Medium	Probe, Calibration Date	DAE, Calibration Date
mmWave - xxxx	Air -	EUmmWV4 - SN9461_F1-78GHz, 2019-11-05	DAE4 Sn1424, 2020-01-24

Scans Setup

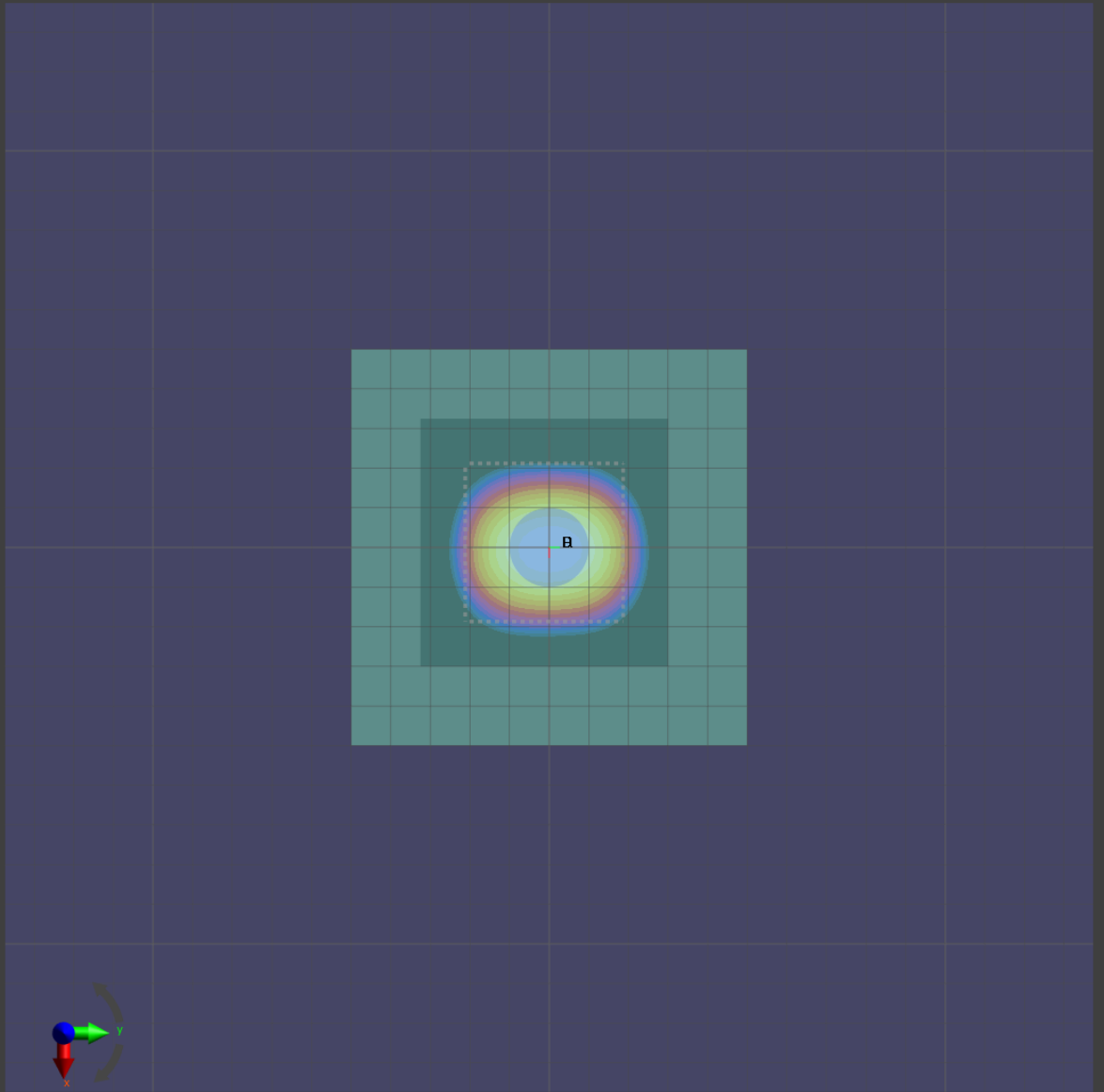
Grid Extents [mm]	60.0 x 60.0
Grid Steps [lambda]	0.25 x 0.25
Sensor Surface [mm]	5.5

Measurement Results

Date	2020-09-07, 11:44
Avg. Area [cm ²]	4.00
S _{avg inc} [W/m ²]	32.0
S _{avg tot} [W/m ²]	32.5
S _{peak} [W/m ²]	47.1
E _{peak} [V/m]	133
H _{peak} [A/m]	0.357
Power Drift [dB]	0.00

Averaged [4.0 cm²] |Re{S}|(x,y,z,f0) [dB(32.5W/m²)]

0



B

-10

Test Laboratory: Sporton International Inc.

Device Under Test Properties

Manufacturer	Dimensions [mm]	IMEI	DUT Type
	100.0 x 100.0 x 100.0		System Check

Exposure Conditions

Phantom Section	Position, Test Distance [mm]	Frequency [MHz]	Conversion Factor
5G	FRONT, 5.50	30000.0	1.0

Hardware Setup

Phantom	Medium	Probe, Calibration Date	DAE, Calibration Date
mmWave - xxxx	Air -	EUmmWV4 - SN9461_F1-78GHz, 2020-11-24	DAE4 Sn376, 2020-11-23

Scans Setup

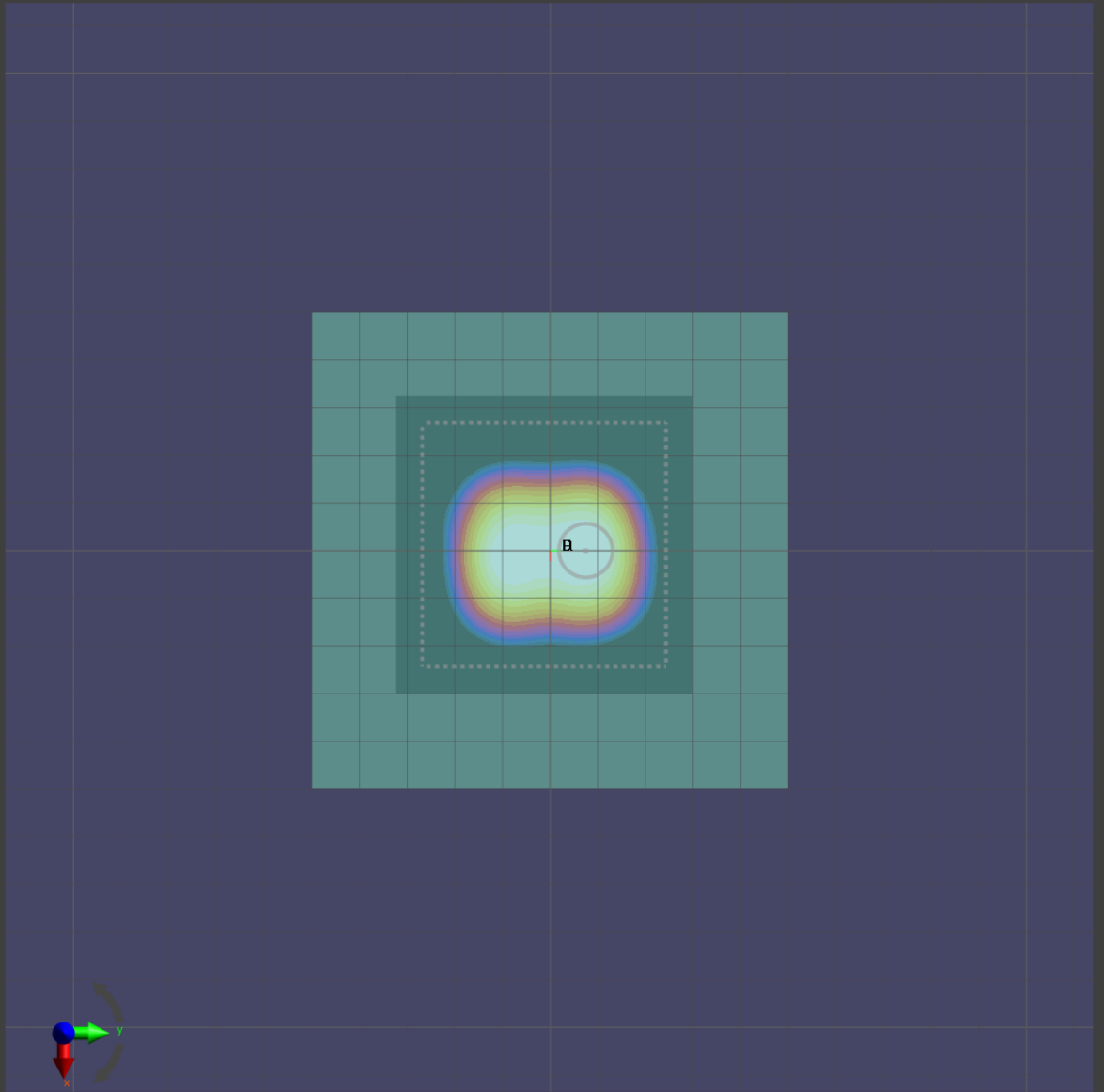
Grid Extents [mm]	60.0 x 60.0
Grid Steps [lambda]	0.25 x 0.25
Sensor Surface [mm]	5.5

Measurement Results

Date	2020-08-26, 15:44
Avg. Area [cm ²]	4.00
S _{avg inc} [W/m ²]	33.9
S _{avg tot} [W/m ²]	34.1
S _{peak} [W/m ²]	49.1
E _{peak} [V/m]	152
H _{peak} [A/m]	0.396
Power Drift [dB]	0.01

Averaged [1.0 cm²] |Re{S}|(x,y,z,f0) [dB(34.1W/m²)]

0



-10