

Test Laboratory: Sporton International Inc.

Device Under Test Properties

Manufacturer	Dimensions [mm]	IMEI	DUT Type
	123.0 x 90.0 x 30.0		Hotspot Modem

Exposure Conditions

Phantom Section	Position, Test Distance [mm]	Frequency [MHz]	Conversion Factor
5G	TOP, 10.00	38500.0	1.0

Hardware Setup

Phantom	Medium	Probe, Calibration Date	DAE, Calibration Date
5G Cover - xxxx	Air -	EUmmWV3 - SN9390, 2018-06-28	DAE4 Sn853, 2018-07-24

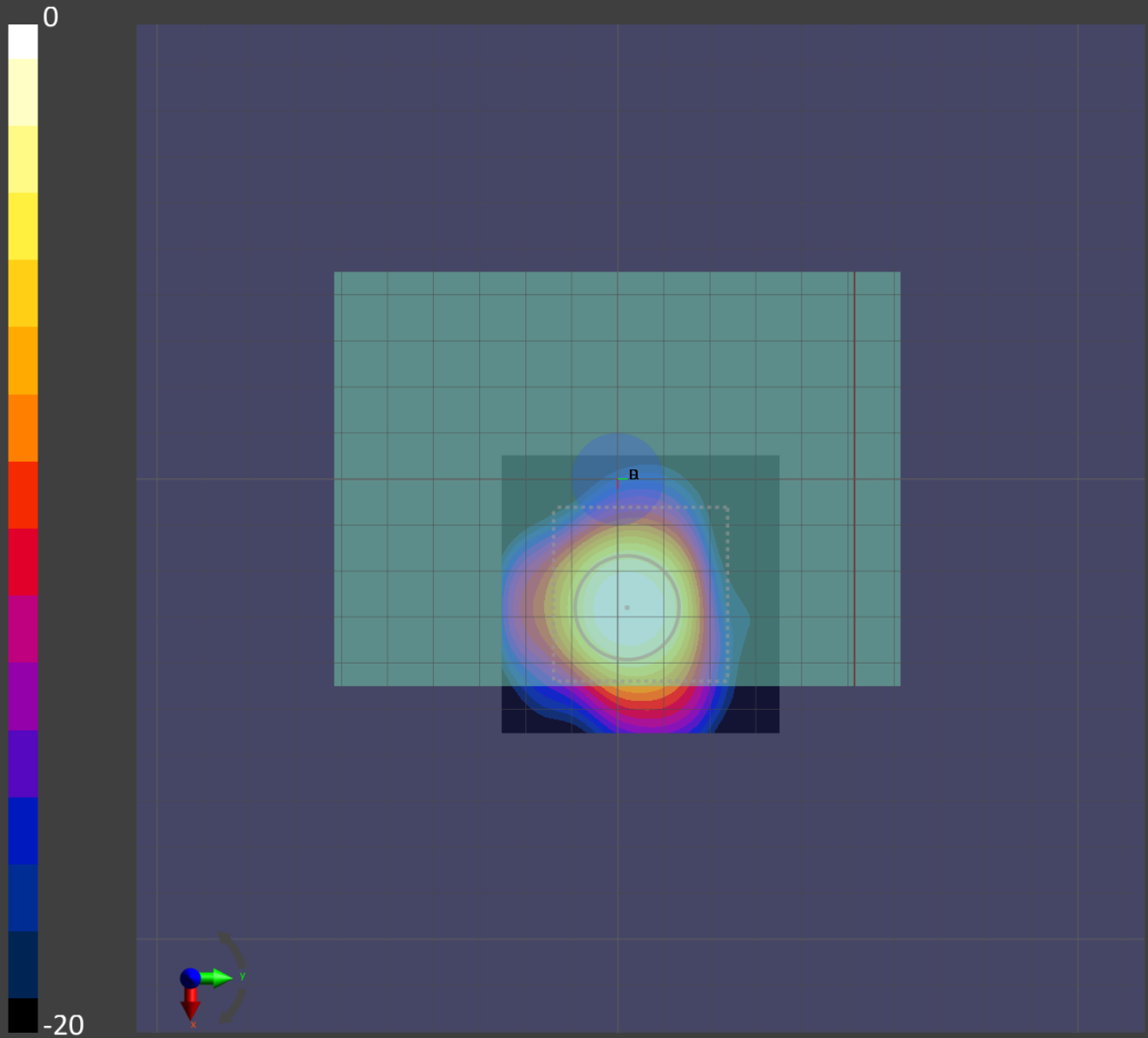
Scans Setup

Grid Extents [mm]	60.0 x 60.0
Grid Steps [lambda]	0.25 x 0.25
Sensor Surface [mm]	10.0

Measurement Results

Date	2019-05-07, 21:14
Avg. Area [cm ²]	4.00
S _{avg inc} [W/m ²]	9.14
S _{avg tot} [W/m ²]	10.2
S _{peak} [W/m ²]	32.6
E _{peak} [V/m]	111
H _{peak} [A/m]	0.293
Power Drift [dB]	0.02

Averaged [4.0 cm²] |Re{S}|(x,y,z,f0) [dB(10.2W/m²)]



Test Laboratory: Sporton International Inc.

Device Under Test Properties

Manufacturer	Dimensions [mm]	IMEI	DUT Type
	123.0 x 90.0 x 30.0		Hotspot Modem

Exposure Conditions

Phantom Section	Position, Test Distance [mm]	Frequency [MHz]	Conversion Factor
5G	TOP, 10.00	38500.0	1.0

Hardware Setup

Phantom	Medium	Probe, Calibration Date	DAE, Calibration Date
5G Cover - xxxx	Air -	EUmmWV3 - SN9390, 2018-06-28	DAE4 Sn853, 2018-07-24

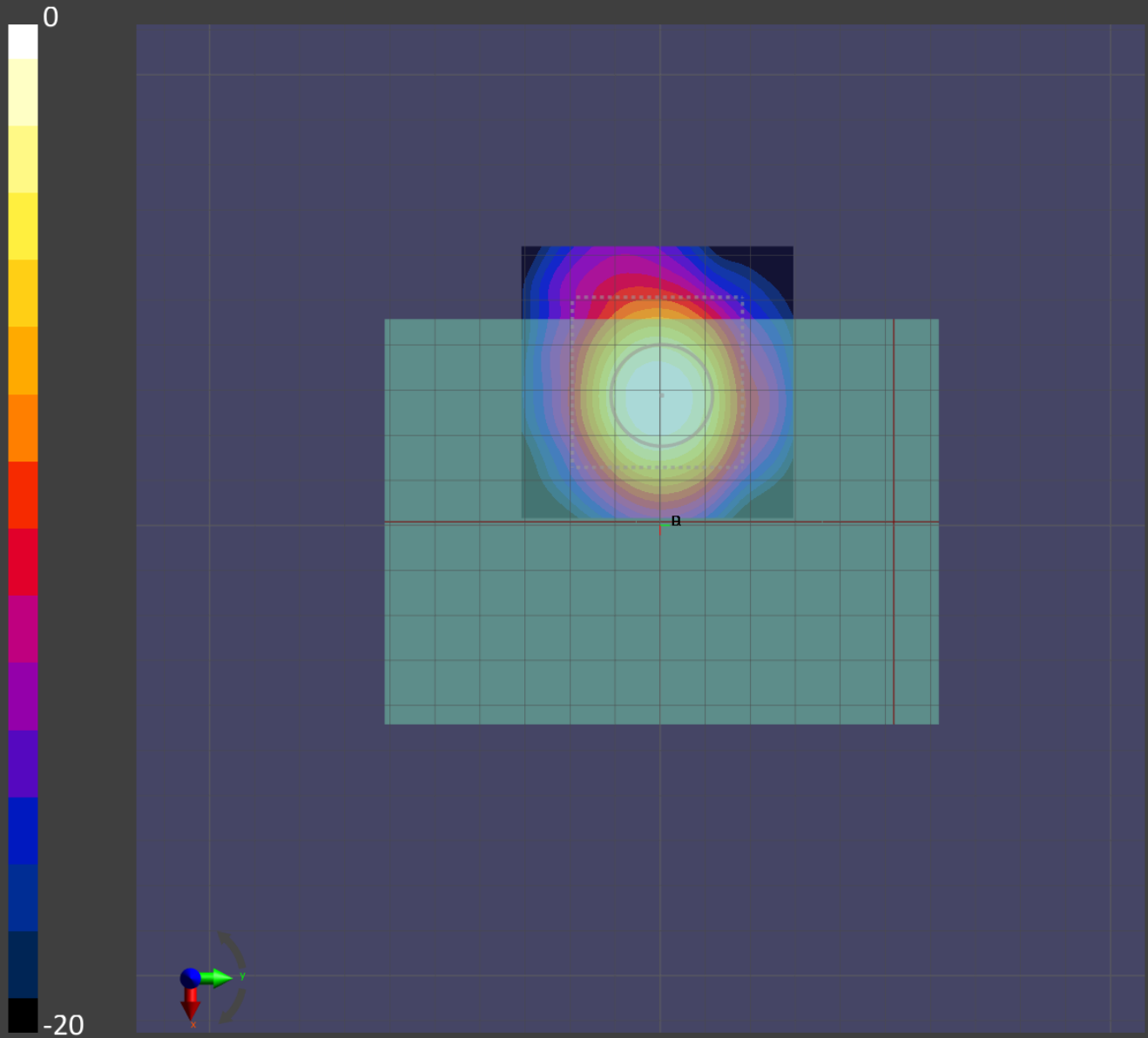
Scans Setup

Grid Extents [mm]	60.0 x 60.0
Grid Steps [lambda]	0.25 x 0.25
Sensor Surface [mm]	10.0

Measurement Results

Date	2019-05-04, 18:08
Avg. Area [cm ²]	4.00
S _{avg inc} [W/m ²]	4.63
S _{avg tot} [W/m ²]	5.13
S _{peak} [W/m ²]	13.5
E _{peak} [V/m]	69.6
H _{peak} [A/m]	0.196
Power Drift [dB]	-0.03

Averaged [4.0 cm²] |Re{S}|(x,y,z,f0) [dB(5.13W/m²)]



Test Laboratory: Sporton International Inc.

Device Under Test Properties

Manufacturer	Dimensions [mm]	IMEI	DUT Type
	123.0 x 90.0 x 30.0		Hotspot Modem

Exposure Conditions

Phantom Section	Position, Test Distance [mm]	Frequency [MHz]	Conversion Factor
5G	TOP, 10.00	38500.0	1.0

Hardware Setup

Phantom	Medium	Probe, Calibration Date	DAE, Calibration Date
5G Cover - xxxx	Air -	EUmmWV3 - SN9390, 2018-06-28	DAE4 Sn853, 2018-07-24

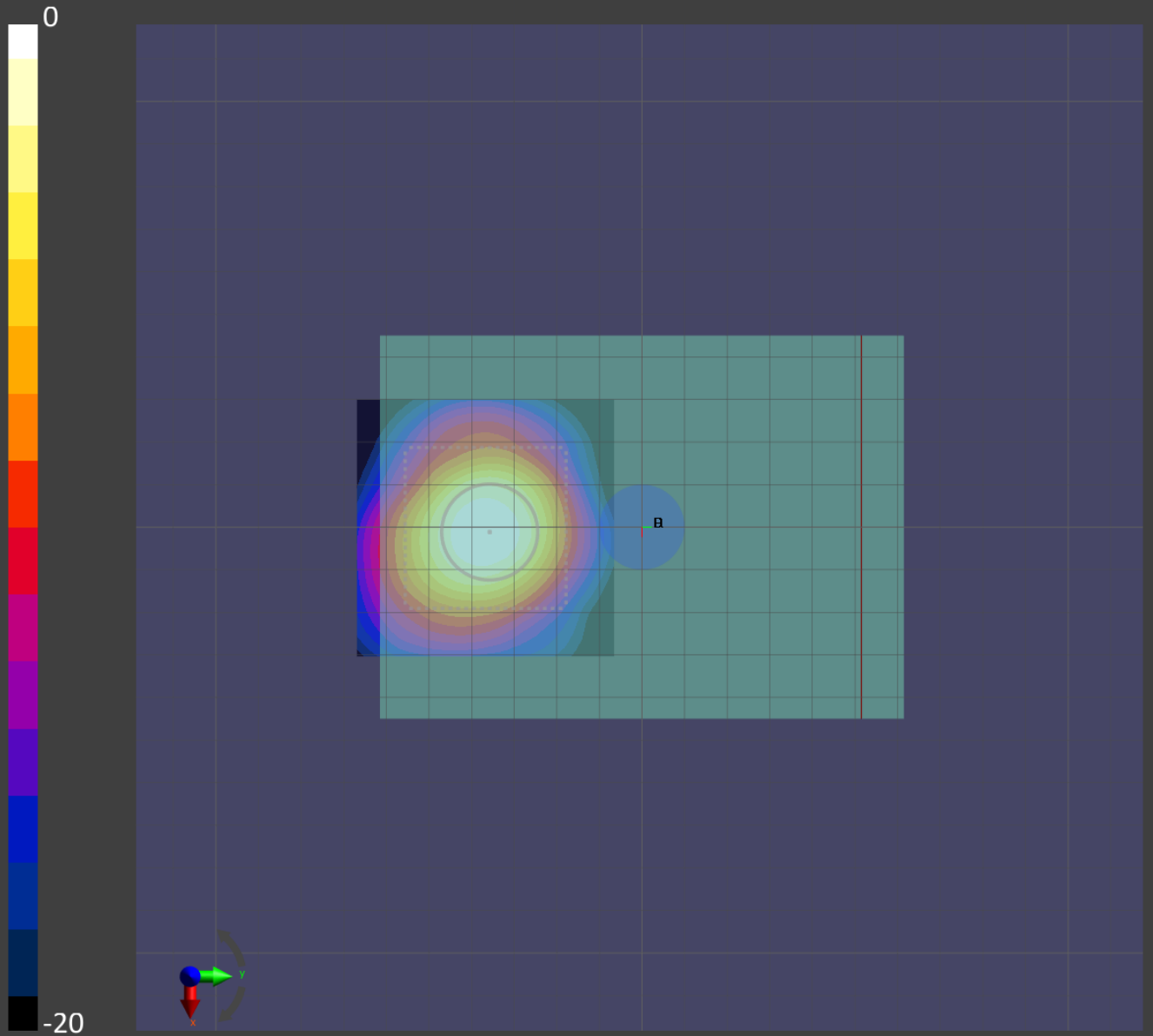
Scans Setup

Grid Extents [mm]	60.0 x 60.0
Grid Steps [lambda]	0.25 x 0.25
Sensor Surface [mm]	10.0

Measurement Results

Date	2019-05-06, 02:47
Avg. Area [cm ²]	4.00
S _{avg inc} [W/m ²]	4.17
S _{avg tot} [W/m ²]	4.66
S _{peak} [W/m ²]	13.7
E _{peak} [V/m]	72.0
H _{peak} [A/m]	0.190
Power Drift [dB]	-0.13

Averaged [4.0 cm²] |Re{S}|(x,y,z,f0) [dB(4.66W/m²)]



Test Laboratory: Sporton International Inc.

Device Under Test Properties

Manufacturer	Dimensions [mm]	IMEI	DUT Type
	123.0 x 90.0 x 30.0		Hotspot Modem

Exposure Conditions

Phantom Section	Position, Test Distance [mm]	Frequency [MHz]	Conversion Factor
5G	TOP, 10.00	39975.0	1.0

Hardware Setup

Phantom	Medium	Probe, Calibration Date	DAE, Calibration Date
5G Cover - xxxx	Air -	EUmmWV3 - SN9390, 2018-06-28	DAE4 Sn853, 2018-07-24

Scans Setup

Grid Extents [mm]	60.0 x 60.0
Grid Steps [lambda]	0.25 x 0.25
Sensor Surface [mm]	10.0

Measurement Results

Date	2019-05-07, 09:39
Avg. Area [cm ²]	4.00
S _{avg inc} [W/m ²]	8.18
S _{avg tot} [W/m ²]	9.36
S _{peak} [W/m ²]	20.5
E _{peak} [V/m]	90.0
H _{peak} [A/m]	0.247
Power Drift [dB]	0.11

Averaged [4.0 cm²] |Re{S}|(x,y,z,f0) [dB(9.36W/m²)]

