

Test Laboratory: Sporton International Inc.

Device Under Test Properties

Manufacturer	Dimensions [mm]	IMEI	DUT Type
	100.0 x 100.0 x 100.0		Verification Source

Exposure Conditions

Phantom Section	Position, Test Distance [mm]	Frequency [MHz]	Conversion Factor
5G	FRONT, 5.55	30000.0	1.0

Hardware Setup

Phantom	Medium	Probe, Calibration Date	DAE, Calibration Date
5G Cover - xxxx	Air -	EUmmWV3 - SN9390, 2018-06-28	DAE4 Sn853, 2018-07-24

Scans Setup

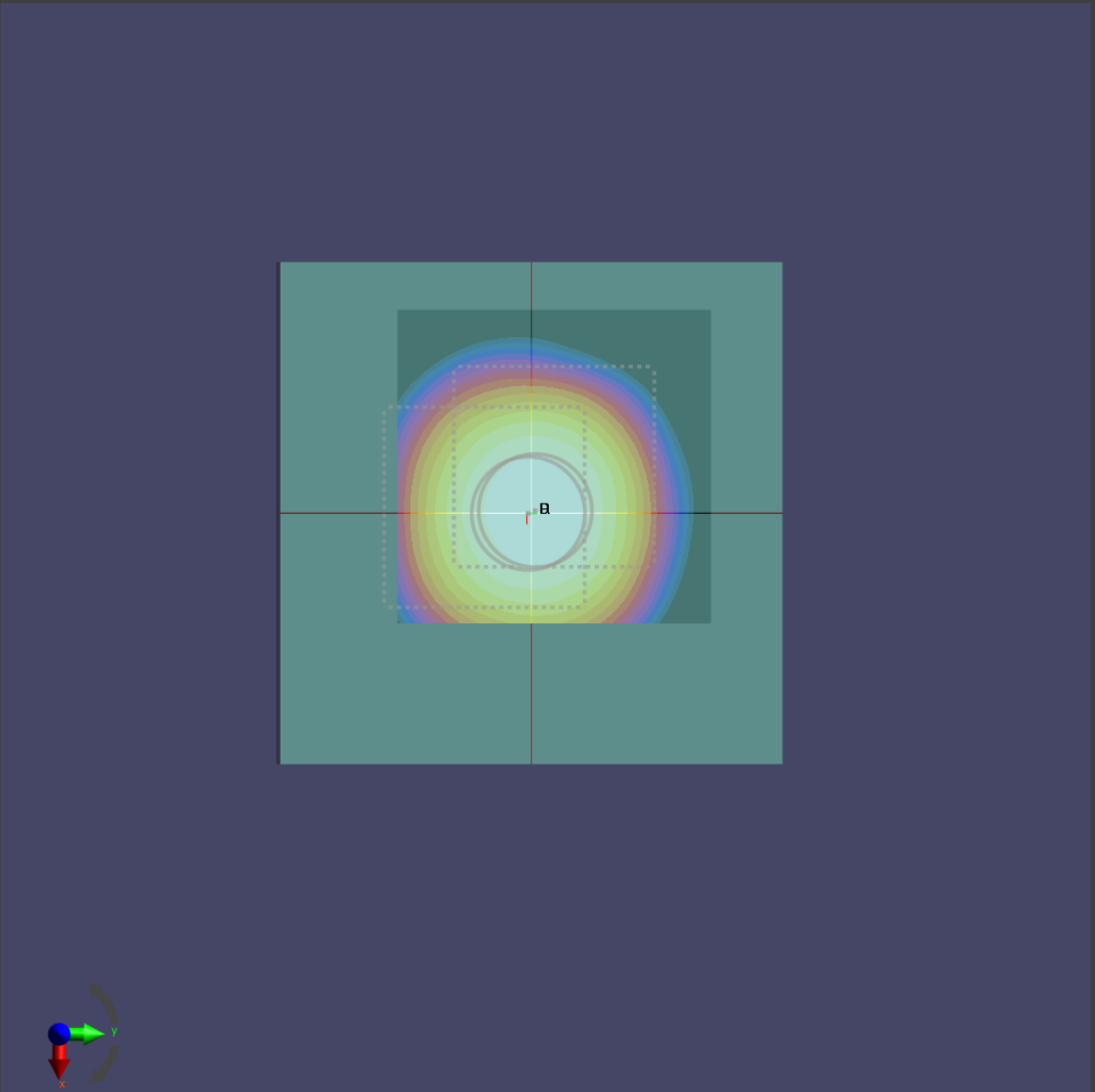
Grid Extents [mm]	60.0 x 60.0
Grid Steps [λ]	0.25 x 0.25
Sensor Surface [mm]	5.55

Measurement Results

Date	2019-05-02, 01:31
Avg. Area [cm^2]	4.00
$S_{\text{avg inc}}$ [W/m^2]	38.4
$S_{\text{avg tot}}$ [W/m^2]	38.7
S_{peak} [W/m^2]	48.7
E_{peak} [V/m]	137
H_{peak} [A/m]	0.359
Power Drift [dB]	0.03

Averaged [4.0 cm²] |Re{S}|(x,y,z,f0) [dB(38.7W/m²)]

0



-20

Test Laboratory: Sporton International Inc.

Device Under Test Properties

Manufacturer	Dimensions [mm]	IMEI	DUT Type
	100.0 x 100.0 x 100.0		Verification Source

Exposure Conditions

Phantom Section	Position, Test Distance [mm]	Frequency [MHz]	Conversion Factor
5G	FRONT, 5.55	30000.0	1.0

Hardware Setup

Phantom	Medium	Probe, Calibration Date	DAE, Calibration Date
5G Cover - xxxx	Air -	EUmmWV3 - SN9413, 2019-02-13	DAE4 Sn853, 2018-07-24

Scans Setup

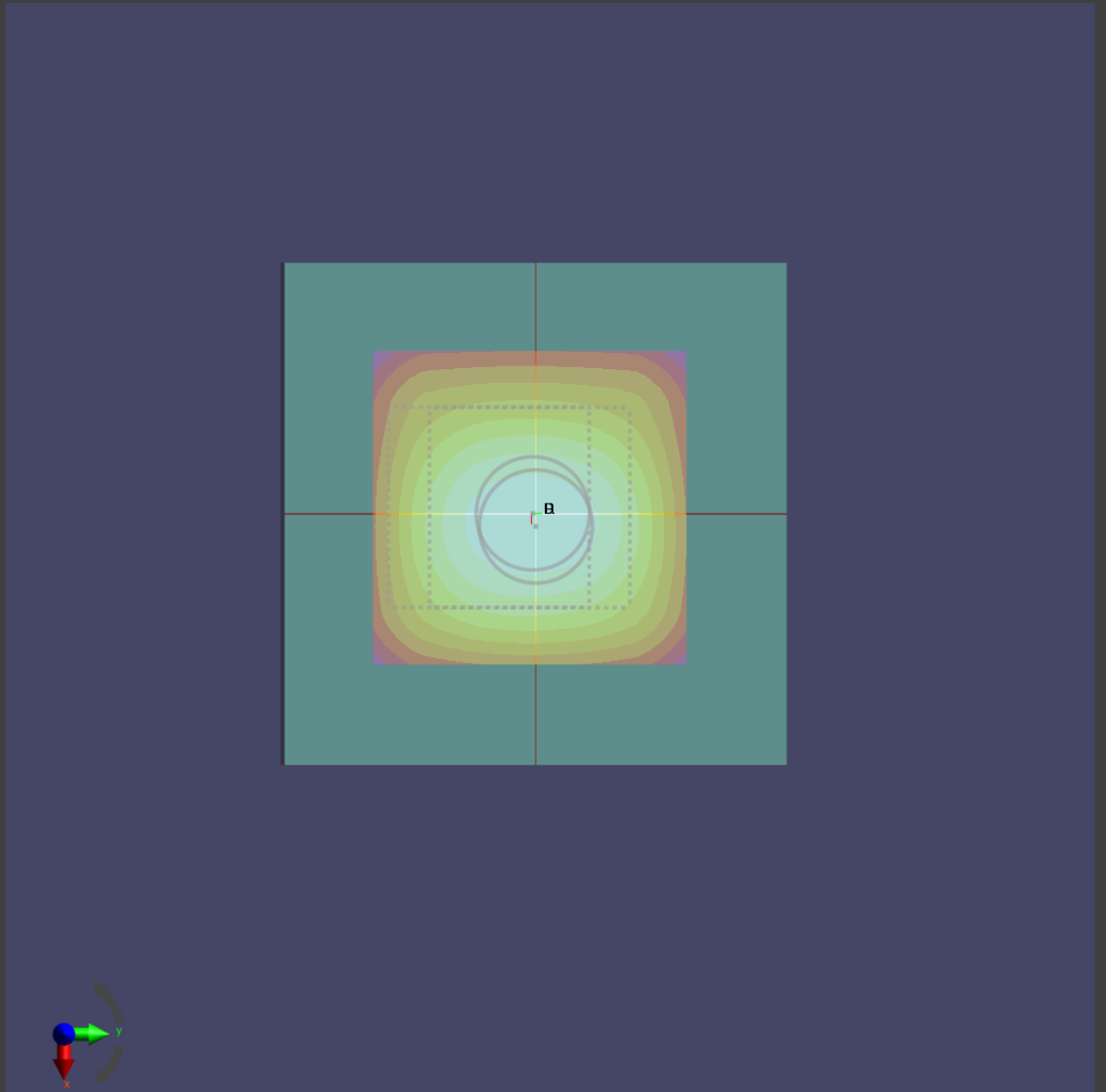
Grid Extents [mm]	60.0 x 60.0
Grid Steps [lambda]	0.25 x 0.25
Sensor Surface [mm]	5.55

Measurement Results

Date	2019-05-08, 03:51
Avg. Area [cm ²]	4.00
S _{avg inc} [W/m ²]	38.2
S _{avg tot} [W/m ²]	38.5
S _{peak} [W/m ²]	48.2
E _{peak} [V/m]	137
H _{peak} [A/m]	0.390
Power Drift [dB]	0.05

Averaged [4.0 cm²] |Re{S}|(x,y,z,f0) [dB(38.5W/m²)]

0



-20

Test Laboratory: Sporton International Inc.

Device Under Test Properties

Manufacturer	Dimensions [mm]	IMEI	DUT Type
	100.0 x 100.0 x 100.0		Verification Source

Exposure Conditions

Phantom Section	Position, Test Distance [mm]	Frequency [MHz]	Conversion Factor
5G	FRONT, 5.55	30000.0	1.0

Hardware Setup

Phantom	Medium	Probe, Calibration Date	DAE, Calibration Date
5G Cover - xxxx	Air -	EUmmWV3 - SN9413, 2019-02-13	DAE4 Sn853, 2018-07-24

Scans Setup

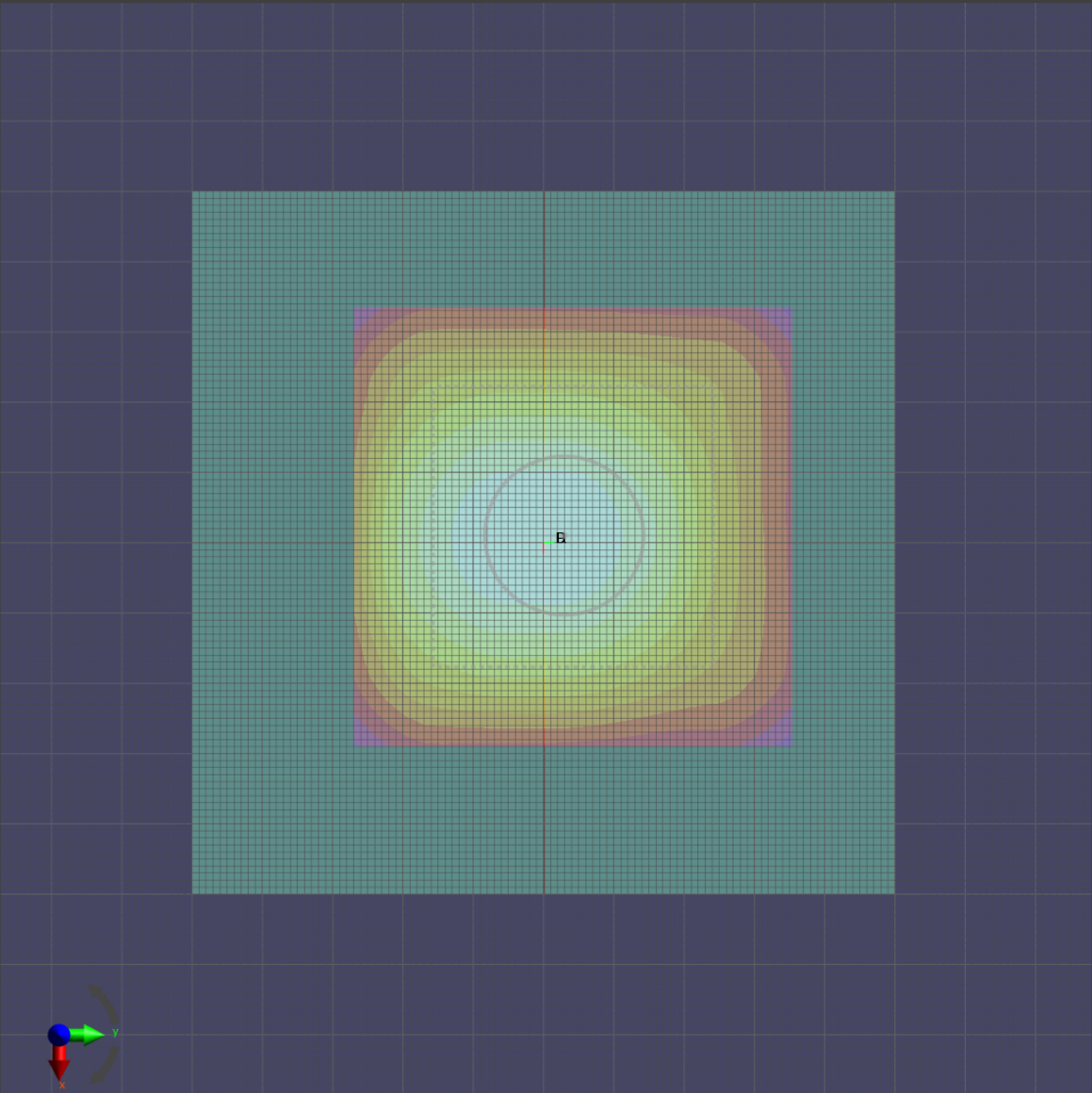
Grid Extents [mm]	60.0 x 60.0
Grid Steps [λ]	0.25 x 0.25
Sensor Surface [mm]	5.55

Measurement Results

Date	2019-05-14, 10:45
Avg. Area [cm^2]	4.00
$S_{\text{avg inc}}$ [W/m^2]	35.8
$S_{\text{avg tot}}$ [W/m^2]	36.2
S_{peak} [W/m^2]	49.2
E_{peak} [V/m]	137
H_{peak} [A/m]	0.390
Power Drift [dB]	-0.01

Averaged [4.0 cm²] |Re{S}|(x,y,z,f0) [dB(36.2W/m²)]

0



-20