

**Test Laboratory: Sporton International Inc.**

**Device Under Test Properties**

Manufacturer	Dimensions [mm]	IMEI	DUT Type
inseego	123.0 x 90.0 x 32.0		Hotspot Modem

**Exposure Conditions**

Phantom Section	Position, Test Distance [mm]	Frequency [MHz]	Conversion Factor
5G	TOP, 10.00	27550.0	1.0

**Hardware Setup**

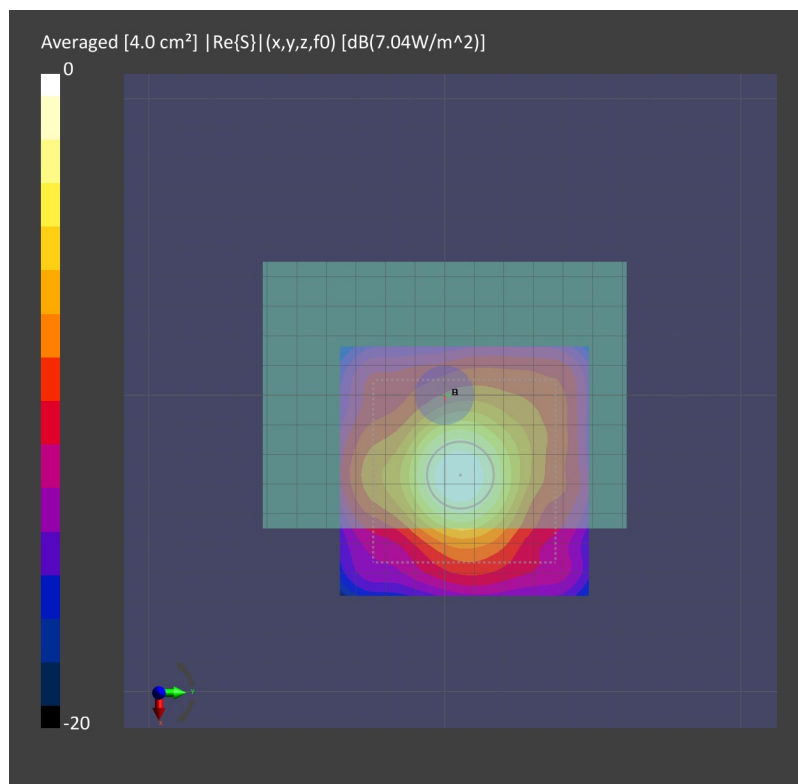
Phantom	Medium	Probe, Calibration Date	DAE, Calibration Date
5G Cover - xxxx	Air -	EUmmWV3 - SN9424, 2019-03-19	DAE4 Sn1424, 2019-01-24

**Scans Setup**

Grid Extents [mm]	80.0 x 80.0
Grid Steps [lambda]	0.25 x 0.25
Sensor Surface [mm]	10.0

**Measurement Results**

Date	2019-05-04, 15:44
Avg. Area [cm <sup>2</sup> ]	4.00
S <sub>avg inc</sub> [W/m <sup>2</sup> ]	6.24
S <sub>avg tot</sub> [W/m <sup>2</sup> ]	7.03
S <sub>peak</sub> [W/m <sup>2</sup> ]	12.0
E <sub>peak</sub> [V/m]	68.2
H <sub>peak</sub> [A/m]	0.178
Power Drift [dB]	-0.05



**Test Laboratory: Sporton International Inc.**

**Device Under Test Properties**

Manufacturer	Dimensions [mm]	IMEI	DUT Type
inseego	123.0 x 90.0 x 32.0		Hotspot Modem

**Exposure Conditions**

Phantom Section	Position, Test Distance [mm]	Frequency [MHz]	Conversion Factor
5G	TOP, 10.00	27550.0	1.0

**Hardware Setup**

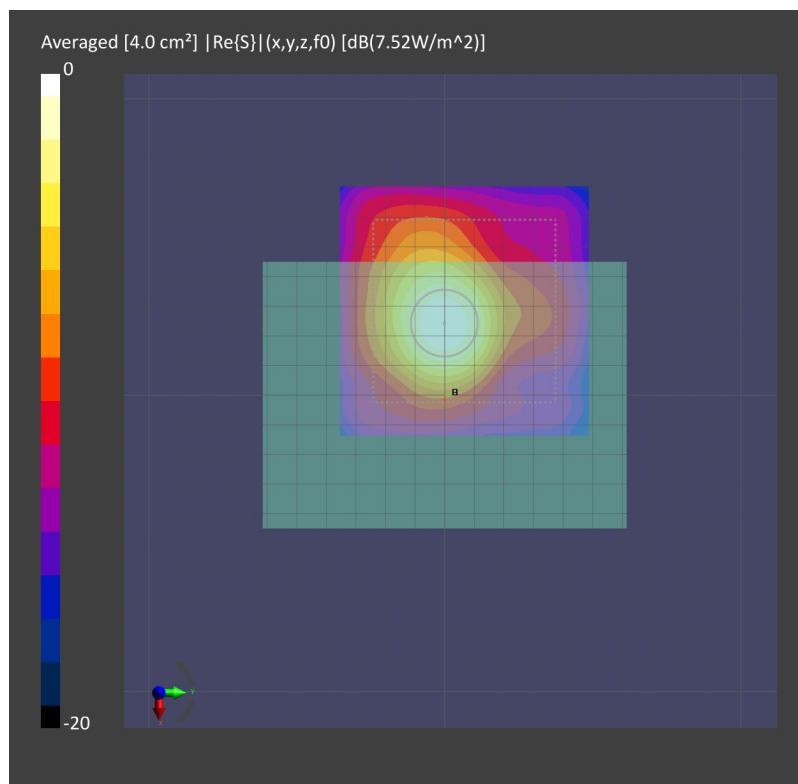
Phantom	Medium	Probe, Calibration Date	DAE, Calibration Date
5G Cover - xxxx	Air -	EUmmWV3 - SN9424, 2019-03-19	DAE4 Sn1424, 2019-01-24

**Scans Setup**

Grid Extents [mm]	80.0 x 80.0
Grid Steps [lambda]	0.25 x 0.25
Sensor Surface [mm]	10.0

**Measurement Results**

Date	2019-05-05, 19:58
Avg. Area [cm <sup>2</sup> ]	4.00
S <sub>avg inc</sub> [W/m <sup>2</sup> ]	6.92
S <sub>avg tot</sub> [W/m <sup>2</sup> ]	7.52
S <sub>peak</sub> [W/m <sup>2</sup> ]	13.3
E <sub>peak</sub> [V/m]	73.0
H <sub>peak</sub> [A/m]	0.184
Power Drift [dB]	0.05



**Test Laboratory: Sporton International Inc.**

**Device Under Test Properties**

Manufacturer	Dimensions [mm]	IMEI	DUT Type
inseego	123.0 x 90.0 x 32.0		Hotspot Modem

**Exposure Conditions**

Phantom Section	Position, Test Distance [mm]	Frequency [MHz]	Conversion Factor
5G	TOP, 10.00	27550.0	1.0

**Hardware Setup**

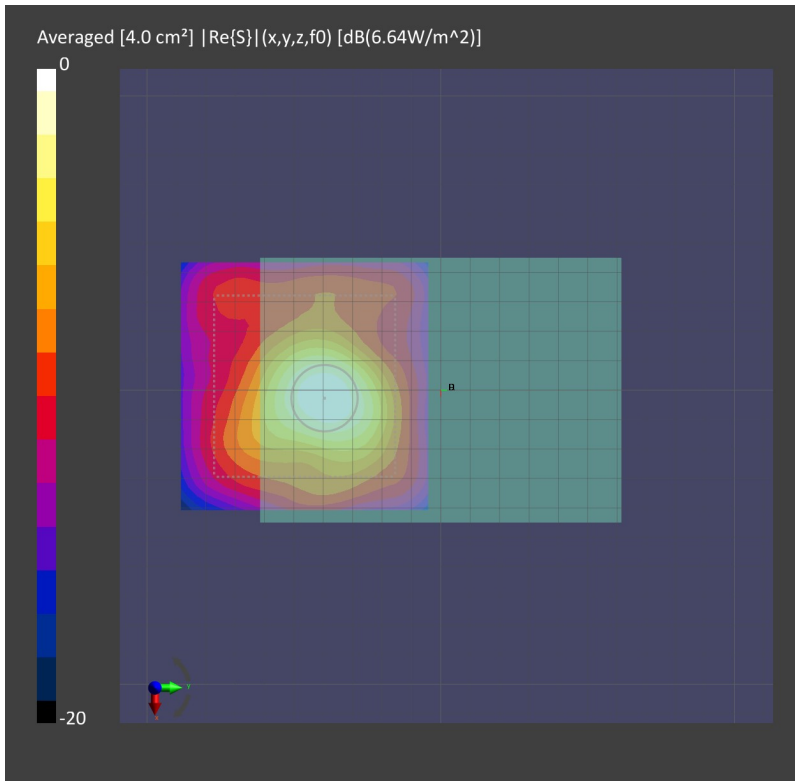
Phantom	Medium	Probe, Calibration Date	DAE, Calibration Date
5G Cover - xxxx	Air -	EUmmWV3 - SN9424, 2019-03-19	DAE4 Sn1424, 2019-01-24

**Scans Setup**

Grid Extents [mm]	80.0 x 80.0
Grid Steps [lambda]	0.25 x 0.25
Sensor Surface [mm]	10.0

**Measurement Results**

Date	2019-05-07, 16:29
Avg. Area [cm <sup>2</sup> ]	4.00
S <sub>avg inc</sub> [W/m <sup>2</sup> ]	5.99
S <sub>avg tot</sub> [W/m <sup>2</sup> ]	6.64
S <sub>peak</sub> [W/m <sup>2</sup> ]	11.6
E <sub>peak</sub> [V/m]	67.6
H <sub>peak</sub> [A/m]	0.175
Power Drift [dB]	0.06



**Test Laboratory: Sporton International Inc.**

**Device Under Test Properties**

Manufacturer	Dimensions [mm]	IMEI	DUT Type
inseego	123.0 x 90.0 x 32.0		Hotspot Modem

**Exposure Conditions**

Phantom Section	Position, Test Distance [mm]	Frequency [MHz]	Conversion Factor
5G	TOP, 10.00	27925.0	1.0

**Hardware Setup**

Phantom	Medium	Probe, Calibration Date	DAE, Calibration Date
5G Cover - xxxx	Air -	EUmmWV3 - SN9424, 2019-03-19	DAE4 Sn1424, 2019-01-24

**Scans Setup**

Grid Extents [mm]	80.0 x 80.0
Grid Steps [lambda]	0.25 x 0.25
Sensor Surface [mm]	10.0

**Measurement Results**

Date	2019-05-08, 19:57
Avg. Area [cm <sup>2</sup> ]	4.00
S <sub>avg inc</sub> [W/m <sup>2</sup> ]	5.98
S <sub>avg tot</sub> [W/m <sup>2</sup> ]	6.64
S <sub>peak</sub> [W/m <sup>2</sup> ]	13.7
E <sub>peak</sub> [V/m]	74.5
H <sub>peak</sub> [A/m]	0.186
Power Drift [dB]	-0.13

