




TEST REPORT No.: (5210)258-0121

## TEST REPORT

To:	MAY CHEONG TOY PRODUCTS FTY. LTD.	To:	-
Attn:	Huang Hai Yu	Attn:	-
Address:	7/F., East Wing, Tsim Sha Tsui Centre, 66 Mody Road, Tsimshatsui East, Kowloon, Hong Kong	Address:	-
Fax:	0769-87753123	Fax:	-
E-mail:	Huanghaiyu.mt@maycheonggroup.com.cn	E-mail:	-
Folder No.:	BVCK10SE145MTHS-B		
Factory name:	--		
Location:	--		
Product:	1:24 Radio Control Vehicles, Assorted MODEL: 81018		
	Sample No:	(5210)258-0121	
	Test date:	September 21, 2010	
	Test Requested:	FCC Part 15 - 2008	
	Test Method:	ANSI C63.4 - 2003	
	FCC ID:	PKG10130RC27	
<p>The results given in this report are related to the tested specimen of the described electrical apparatus.</p> <p><b>CONCLUSION:</b> The submitted sample was found to <u>COMPLY</u> with requirement of FCC Part 15 Subpart C.</p> <p>Authorized Signature:</p>			
			
Reviewed by: Keith Yeung		Approved by: Steven Tsang	
Date: September 29, 2010		Date: September 29, 2010	



## TEST REPORT No.: (5210)258-0121

### Location of the test site

Radiated and Conducted emissions measurements are investigated and taken pursuant to the procedures of ANSI C63.4 – 2003. An Open Area Test Site and Full Anechoic Chamber (FCC Listed Site, Registration No. 642151) are set up for investigation and located at :

### BUREAU VERITAS HONG KONG LIMITED, EMC CENTRE

No. 2106-2107, 21/F., Westin Centre,  
26 Hung To Road,  
Kwun Tong, Kowloon,  
Hong Kong

### List of measuring equipment

#### Radiated Emission

EQUIPMENT	MANUFACTURER	MODEL NO.	SERIAL NO.	CALIBRATION DUE
EMI TEST RECEIVER	R&S	ESCS 30	830986/030	26-SEP-2010
LOOP ANTENNA	ETS-LINDGREN	6502	00102266	17-MAY-2011
BILOG ANTENNA	SCHAFFNER	CBL6112D	25229	02-AUG-2011
OPEN AREA TEST SITE	BVCPS	N/A	N/A	05-JULY-2011
ANECHOIC CHAMBER	ALBATROSS	M-CDC	80374004499B	06-JULY-2011
COAXIAL CABLE	SUHNER	N/A	N/A	07-DEC-2010

#### Remarks:-

N/A : Not Applicable or Not Available

The measurement instrumentation uncertainty would be taking into consideration on each of the test result

**TEST REPORT No.: (5210)258-0121**

**Equipment Under Test [EUT]**

**Description of Sample:**

Model Name: 1:24 Radio Control Vehicles, Assorted  
 Model Number: 81018  
 Additional Model Name: 1:24 CSRC with working headlights Asst./  
 1:16 Off-Road R/C, Assorted  
 Additional Model Number: 81056 / 81100 / 10130 / 81051 / 81052 / 81053 / 81054 /  
 81055 / 81057 / 81058 / 81059 / 81061 / 81062 / 81063 /  
 81064 / 81065 / 81066 / 81067 / 81068 / 81091  
 Additional Model information: Declare the Circuit, PCB layout and Electrical parts of the products are identical to the basic model. Except the outlook and colour of shell is different.  
 Rating: 9Vd.c. ("6F22" size battery x 1)

**Description of EUT Operation:**

The Equipment Under Test (EUT) is a MAY CHEONG TOY PRODUCTS FTY. LTD. of Radio Control toy. The transmitter is 2 buttons and 1 wheel transmitter and operating at 27.145MHz. The EUT continues to transmit when buttons are being pressed, Modulation by IC, and type is pulse modulation.

The transmitter has different control:

1. Top button – control forward
2. Bottom button – control backward
3. Wheel – control left and right

**Antenna Requirement (Section 15.203)**

The EUT is use of a permanently antenna. The antenna consists of 17cm metal spring covered with rubber. The antenna is not replaceable or user serviceable. The requirements of S15.203 are met. There are no deviations or exceptions to the specifications.

**Photo of Antenna**



## TEST REPORT No.: (5210)258-0121

### Test Results

#### Radiated Emissions (Fundamental)

Test Requirement: FCC Part 15 Section 15.227  
 Test Method: ANSI C63.4  
 Test Date(s): 2010-09-21  
 Temperature: 27.0 °C  
 Humidity: 78.0 %  
 Atmospheric Pressure: 100.4 kPa  
 Mode of Operation: Transmission mode  
 Tested Voltage: 9Vd.c. ("6F22" size battery x 1)

#### Test Method:

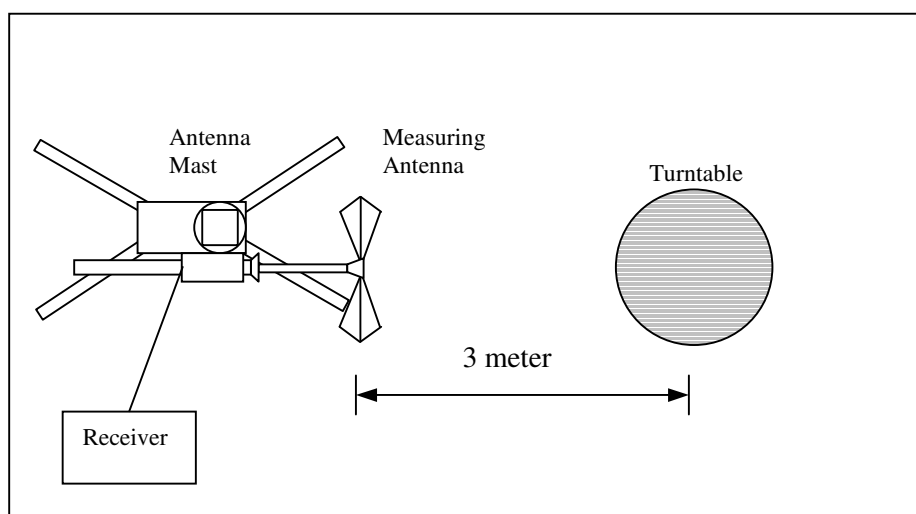
Radiated emissions measurements are investigated and taken pursuant to the procedures of ANSI C63.4 – 2003.

The equipment under test (EUT) was placed on a non-conductive turntable with dimensions of 1.5m x 1m and 0.8m high above the ground. 3m from the EUT, a broadband antenna mounting on the mast received the signal strength. During the test, each emission was maximized by: having the EUT continuously working, investigated all operating modes, rotated about all 3 axis (X, Y & Z) and considered typical configuration to obtain worst position, manipulating interconnecting cables, For battery operated equipment, the equipment tests shall be perform using new battery. The turntable was rotated to maximize the emission level. The antenna was then moving along the mast from 1m up to 4m until no more higher value was found. Both horizontal and vertical polarization of the antenna were placed and investigated.

For below 30MHz, a loop antenna with its vertical plane is place 3m from the EUT and rotated about its vertical axis for maximum response at each azimuth about the EUT. And the centre of the loop shall be 1m above the ground.

Location: The Roof, Westin Centre, 26 Hung To Road, Kwun Tong, Kowloon, Hong Kong

#### Test Setup: Open Area Test Site





**TEST REPORT No.: (5210)258-0121**

**Limits for Field Strength of Fundamental Emissions [FCC 47CFR 15.227]:**

Frequency Range of Fundamental [MHz]	Field Strength of Fundamental Emission [Peak] [μV/m]	Field Strength of Fundamental Emission [Average] [μV/m]
26.96 – 27.28	100,000 (100 dBμV/m)	10,000 (80 dBμV/m)

**Measurement Data**

**Test Result of (Transmission mode): PASS**

**Detection mode: Peak**

Frequency (MHz)	Polarity (H/V) and degree	Antenna Factor and Cable Loss (dB/m)	Field Strength at 3m (dBμV/m)	Limit at 3m (dBμV/m)	Margin (dB)
27.145	V/0°	9.9	55.5	100	-44.5

**Detection mode: # Average**

Frequency (MHz)	Polarity (H/V) and degree	Antenna Factor and Cable Loss (dB/m)	Field Strength at 3m (dBμV/m)	Limit at 3m (dBμV/m)	Margin (dB)
27.145	V/0°	9.9	**51.4	80	-28.6

# For pulse modulated devices and using measuring equipment employing a peak detection mode, properly adjusted for such factor as pulse desensitisation.

\*\*Duty Cycle Correction =  $20\text{Log}(0.627) = -4.1\text{dB}$

Note: Field Strength includes Antenna Factor and Cable Loss.

Receiver setting: RBW = 100KHz  
VBW = 300KHz



## TEST REPORT No.: (5210)258-0121

### Radiated Emissions (9kHz – 1GHz)

Test Requirement: FCC Part 15 Section 15.209  
 Test Method: ANSI C63.4  
 Test Date(s): 2010-09-21  
 Temperature: 27.0 °C  
 Humidity: 78.0 %  
 Atmospheric Pressure: 100.4 kPa  
 Mode of Operation: Transmission mode  
 Tested Voltage: 9Vd.c. ("6F22" size battery x 1)

#### Limits for Radiated Emissions [FCC 47 CFR 15.209]:

Frequency Range [MHz]	Quasi-Peak Limits [ $\mu\text{V/m}$ ]
1.705-30	300
30-88	100
88-216	150
216-960	200
Above960	500

### Measurement Data

**Test Result of (Transmission mode): PASS**

**Detection mode: Quasi-Peak**

Frequency (MHz)	Polarity (H/V)	Antenna Factor and Cable Loss (dB/m)	Field Strength at 3m (dB $\mu\text{V/m}$ )	Limit at 3m (dB $\mu\text{V/m}$ )	Margin (dB)
54.290	H	8.6	20.3	40.0	-19.7
81.435	H	7.9	16.3	40.0	-23.7
108.580	H	11.0	18.5	43.5	-25.0
135.725	H	10.9	19.0	43.5	-24.5
162.870	H	10.9	18.8	43.5	-24.7
190.015	H	11.2	18.5	43.5	-25.0
217.160	H	12.0	19.3	46.0	-26.7
244.305	H	13.6	21.3	46.0	-24.7
271.450	H	14.5	22.3	46.0	-23.7
298.595	H	14.9	22.8	46.0	-23.2

Note: Field Strength includes Antenna Factor and Cable Loss.

Receiver setting: RBW = 120KHz  
 VBW = 120KHz



## TEST REPORT No.: (5210)258-0121

### 26dB Bandwidth of Fundamental Emission

Test Requirement: FCC 47 CFR 15.227  
Test Method: ANSI C63.4:2003 (Section 13.1.7)  
Test Date(s): 2010-09-21  
Temperature: 27.0 °C  
Humidity: 78.0 %  
Atmospheric Pressure: 100.4 kPa  
Mode of Operation: Transmission mode  
Tested Voltage: 9Vd.c. ("6F22" size battery x 1)

#### Test Method:

The bandwidth is measured at an amplitude level reduced from the reference level by a specified ratio. The reference level is the level of the highest amplitude signal observed from the transmitter at the fundamental frequency. Once the reference level is established, the equipment is conditioned with typical modulating signal to produce the worst-case (i.e. the widest) bandwidth.

#### Limits for 26dB Bandwidth of Fundamental Emission:

Frequency [MHz]	26dB Bandwidth [KHz]	Limits [MHz]
27.1456	58.88	within 26.96 – 27.28

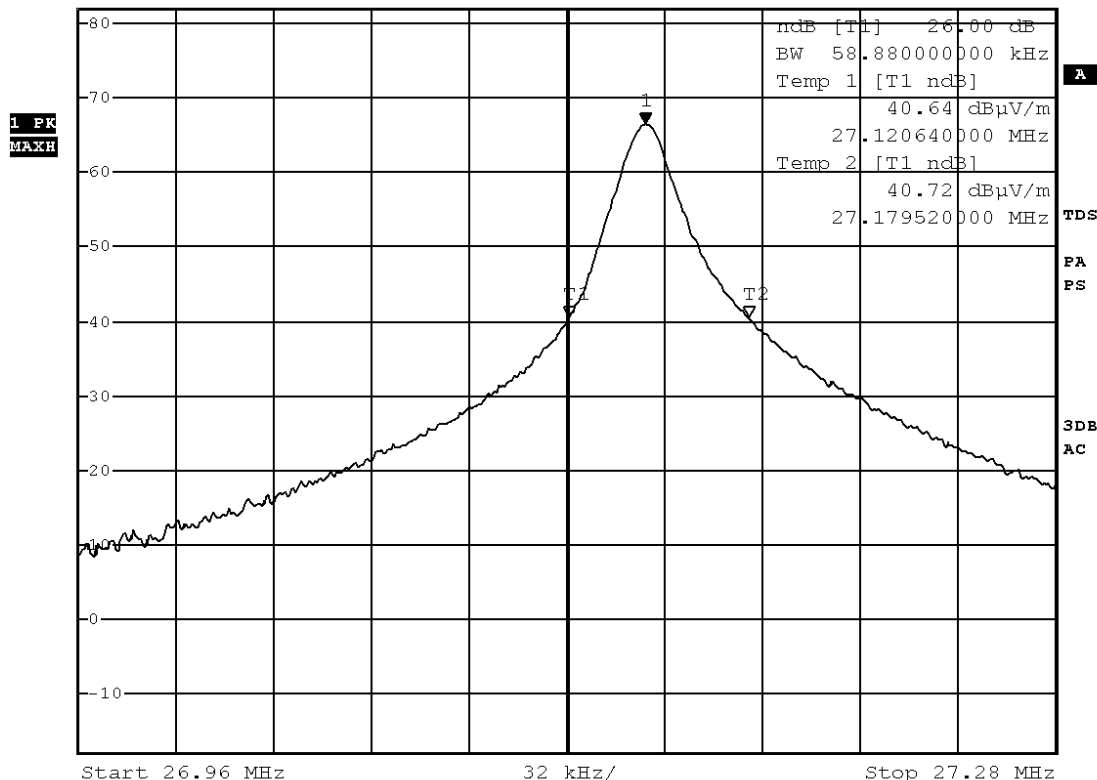
**TEST REPORT No.: (5210)258-0121**

**Measurement Data :**

**Test Result of 26dB Bandwidth of Fundamental Emission: PASS**



21.Sep 10 11:13 RBW 10 kHz Marker 1 [T1 ]  
 Ref 82 dBµV/m \*Att 10 dB VBW 30 kHz 66.52 dBµV/m  
 SWT 5 ms 27.14560000 MHz



Date: 21.SEP.2010 11:13:07





## TEST REPORT No.: (5210)258-0121

### Duty Cycle Correction During 100msec:

Each function key sends a different series of characters, but each packet period (16.9msec) never exceeds a series of 4 long (1.4msec) and 10 short (0.5msec) pulses. Assuming any combination of short or long pulses may be obtained due to encoding the worst case transmit duty cycle would be considered  $(4 \times 1.4\text{msec}) + (10 \times 0.5\text{msec})$  per 16.9msec = 62.7% duty cycle. Figure A through C show the characteristics of the pulse train for one of these functions.

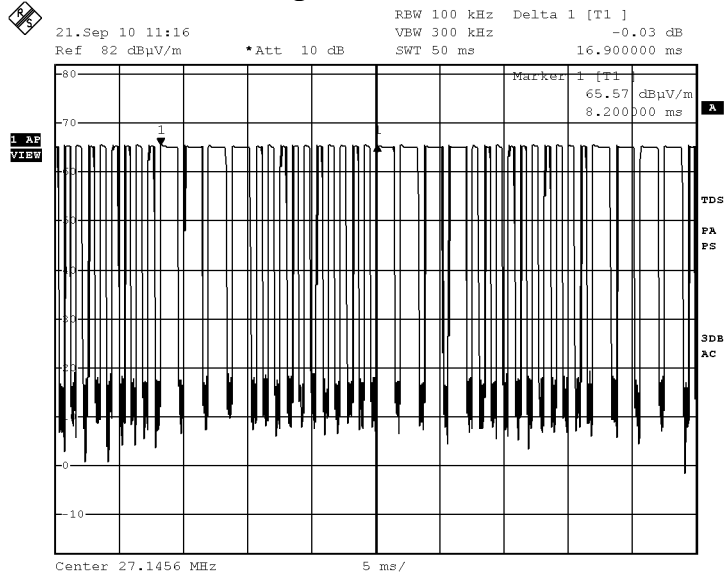
Remarks:

Duty Cycle Correction =  $20\text{Log}(0.627) = -4.1\text{dB}$

The following figures [Figure A to Figure C] show the characteristics of the pulse train for one of these functions.

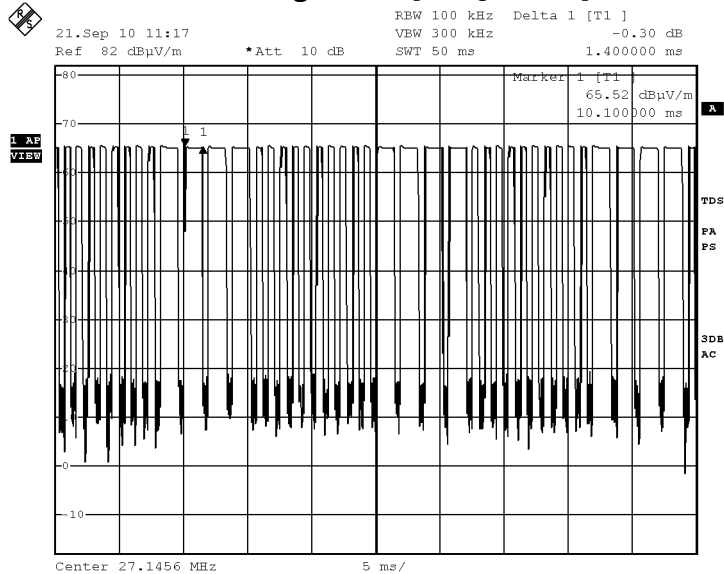
**TEST REPORT No.: (5210)258-0121**

**Figure A [Pulse Train]**



Date: 21.SEP.2010 11:16:57

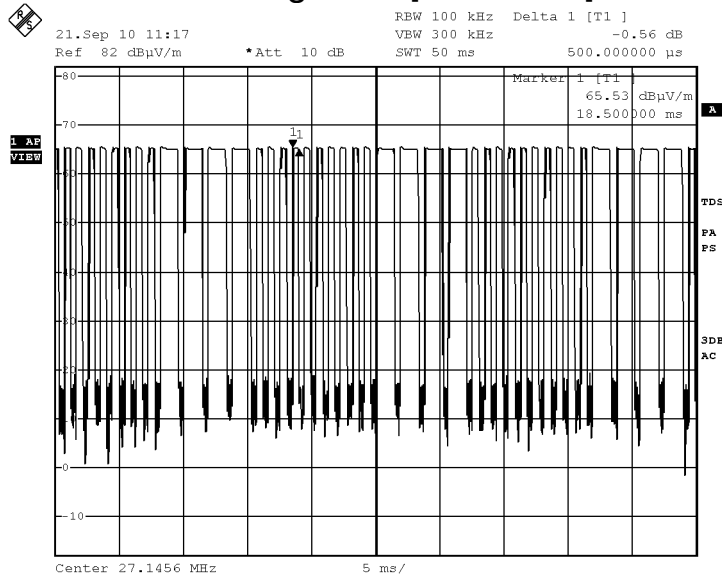
**Figure B [Long Pulse]**



Date: 21.SEP.2010 11:17:27

**TEST REPORT No.: (5210)258-0121**

**Figure C [Short Pulse]**



Date: 21.SEP.2010 11:17:48

**TEST REPORT No.: (5210)258-0121**

**Photographs of EUT**

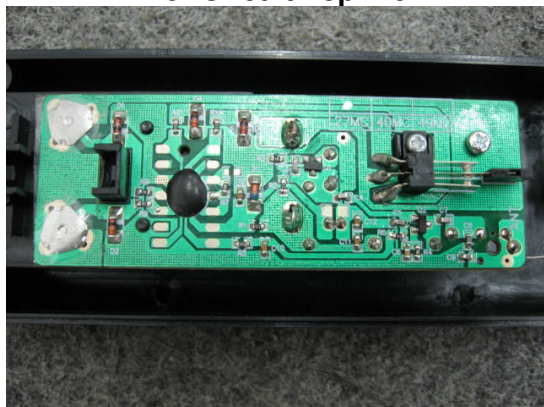
**Front View of the product**



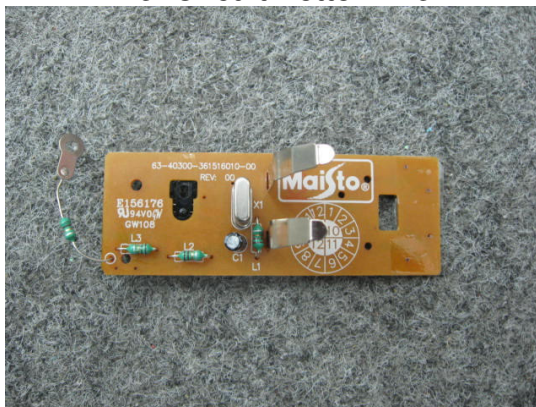
**Rear View of the product**



**Inner Circuit Top View**



**Inner Circuit Bottom View**



**TEST REPORT No.: (5210)258-0121**

**Battery compartment**



**Battery Cover**



**Internal View of the product**



**Antenna**



**TEST REPORT No.: (5210)258-0121**

**Measurement of Radiated Emission Test Set Up**



**\*\*\*\*\* End of Report \*\*\*\*\***