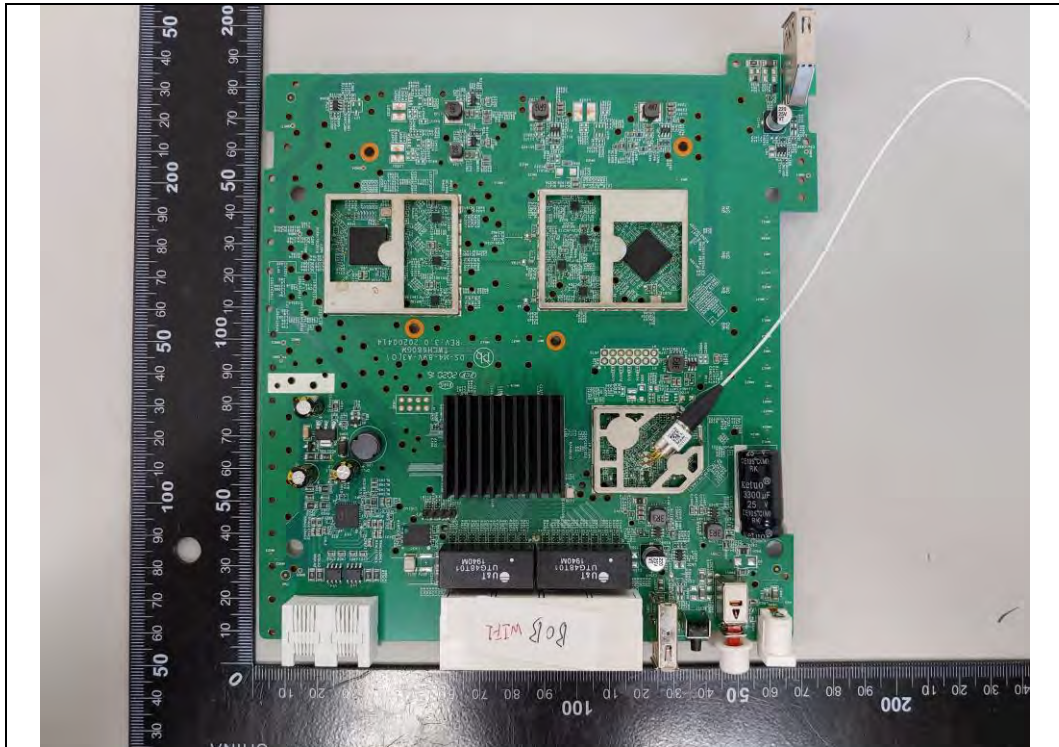


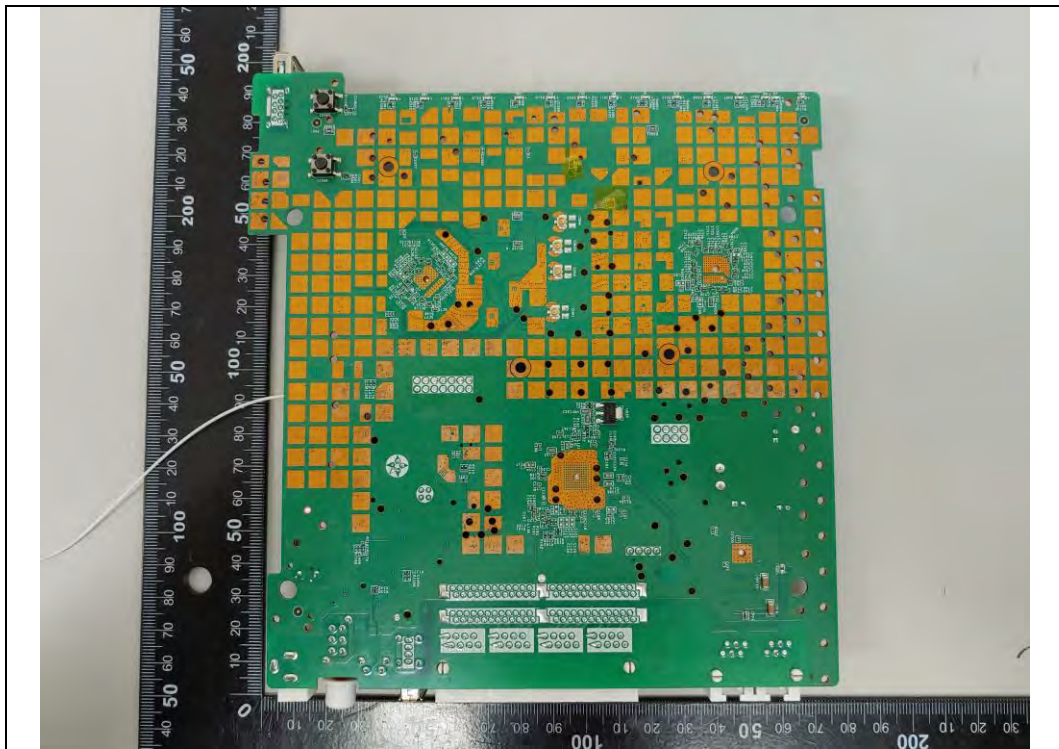
# Internal Photos

## Internal Photos

Main Board Front

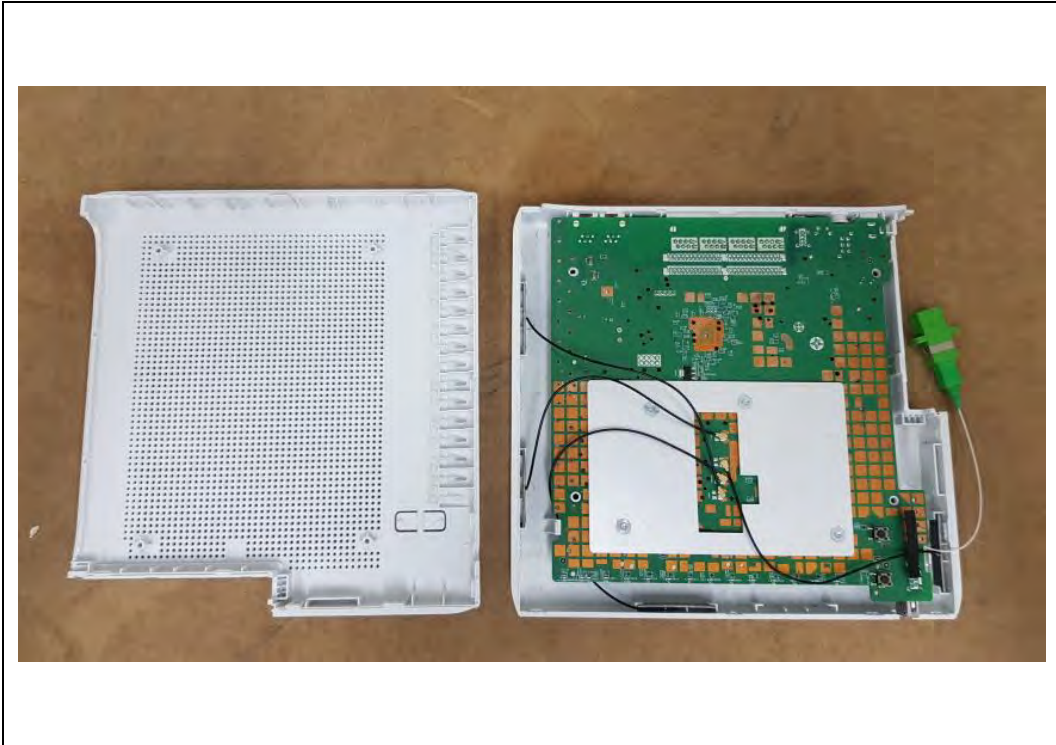


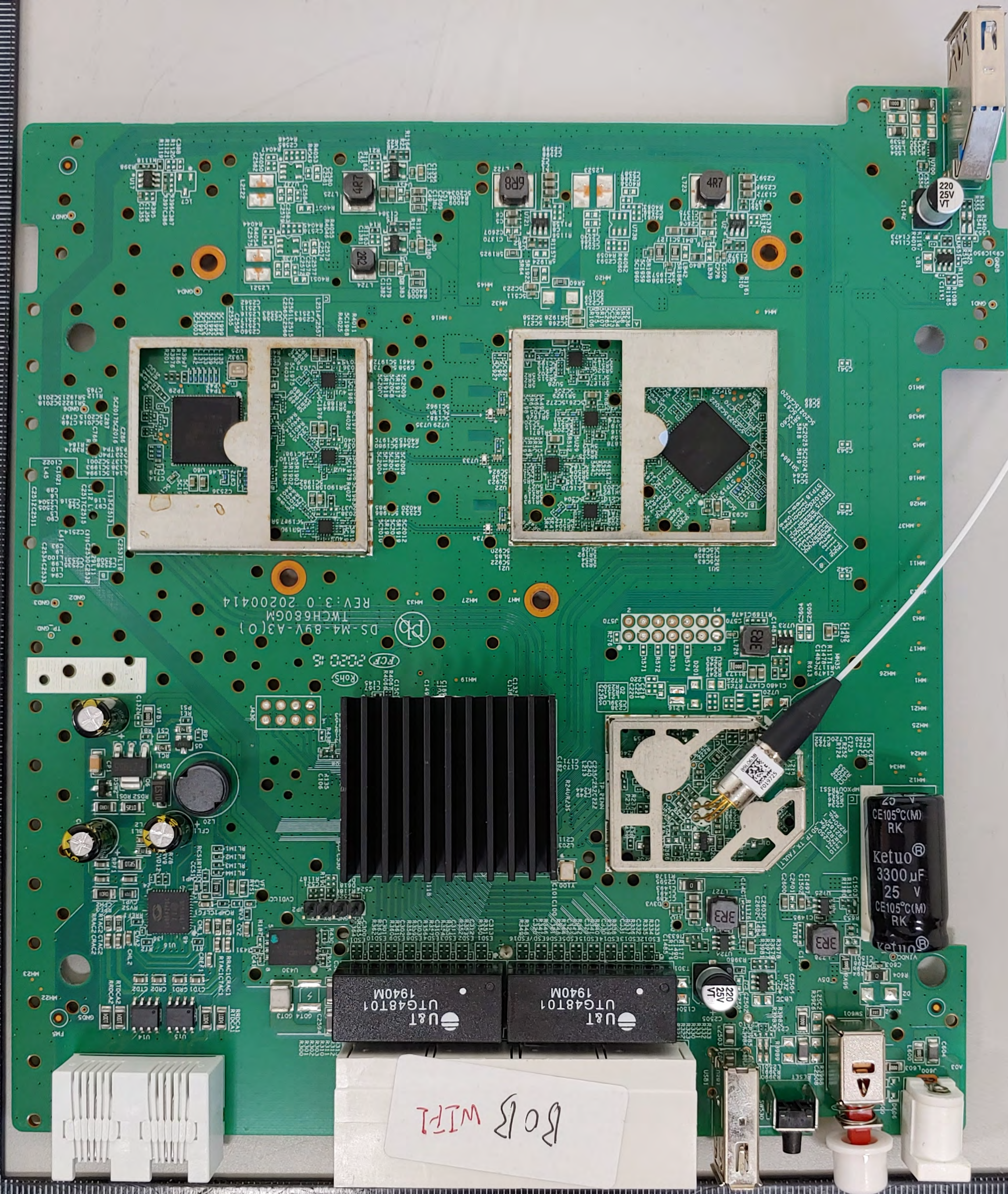
Main Board Rear



## Internal Photos

Inside



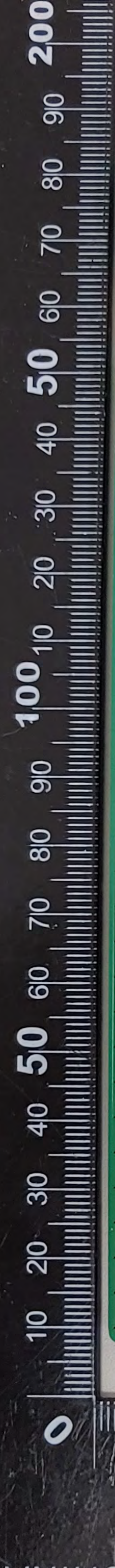
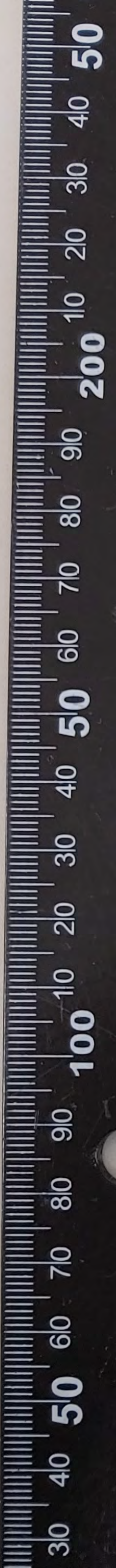


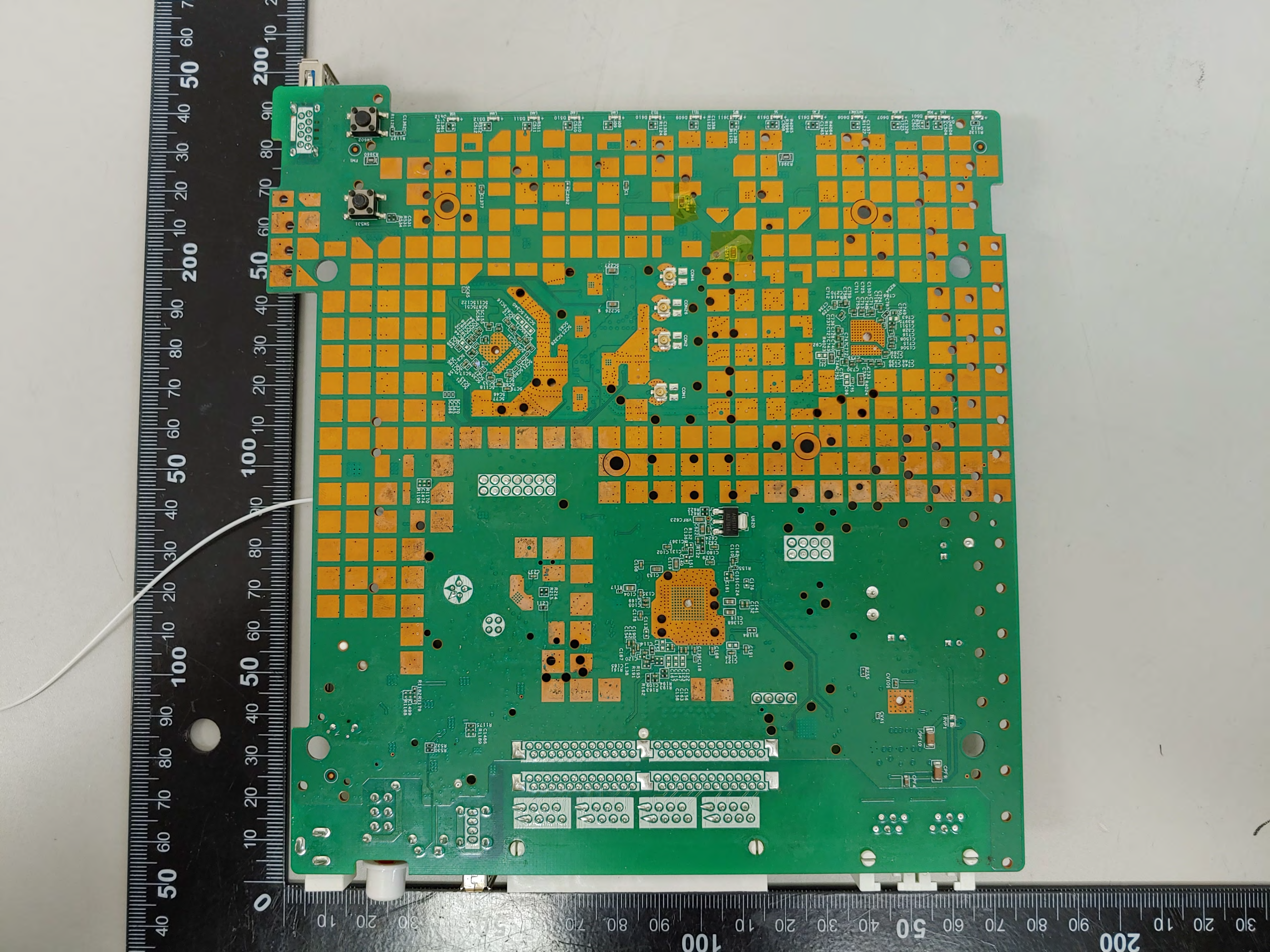
Bob WiFi

U&T  
UTG48T01  
1940M

Ketuo  
3300µF  
25 V  
CE105°C(M)  
RK

REV: 3.0 20200414  
DS-M4-89V-A3(O)  
TWH680GM





0 10 20 30 40 50 60 70 80 90 100 110 120 130 140 150 160 170 180 190 200 210 220 230 240

0 10 20 30 40 50 60 70 80 90 100 110 120 130 140 150 160 170 180 190 200 210 220 230 240

The PCB contains several key components and features:

- Microchips:** A large central microchip (likely a microcontroller or processor) is surrounded by numerous smaller components. Other chips are visible in the upper and lower right sections.
- Capacitors:** Numerous small, rectangular surface-mount capacitors are distributed across the board, particularly in the central and lower right areas.
- Connectors:** Several multi-pin connectors are present, including a large one at the bottom center and smaller ones along the left and right edges.
- Grid of Pads:** A prominent feature is a grid of orange pads covering most of the board's surface, which are likely used for component placement or testing.
- Other Components:** The board includes various passive components like resistors, inductors, and diodes, as well as larger components like a micro-USB port and a USB-A port.