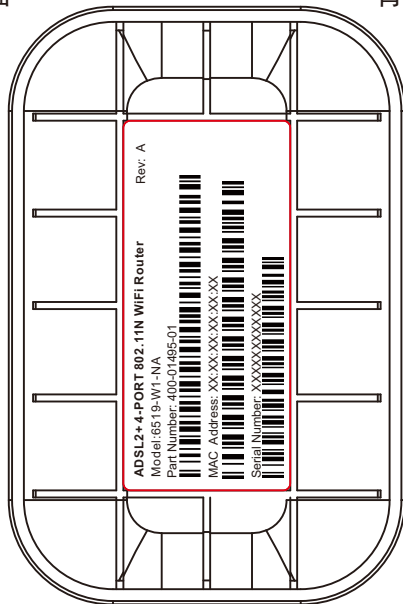
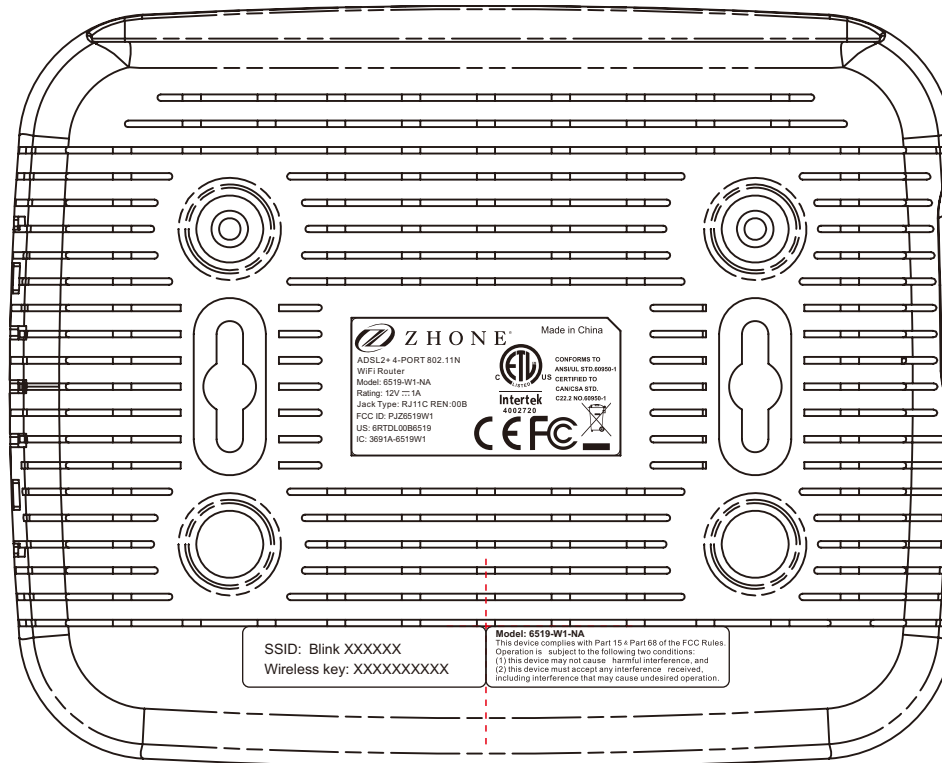
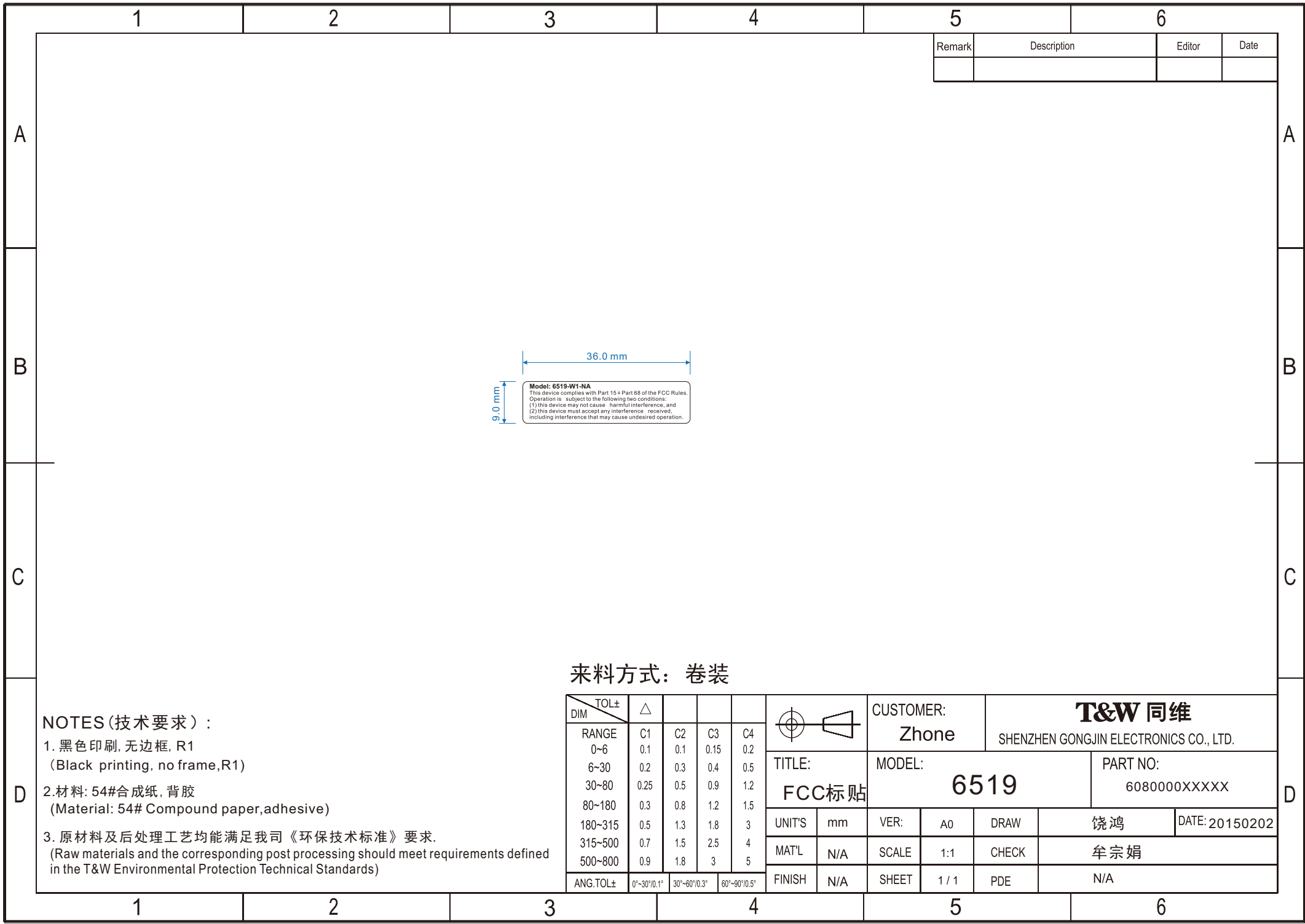


正面

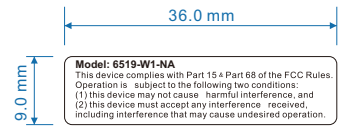


背面





Remark	Description	Editor	Date



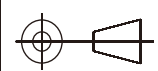
Model: 6519-W1-NA
 This device complies with Part 15 of the FCC Rules.
 Operation is subject to the following two conditions:
 (1) this device may not cause harmful interference, and
 (2) this device must accept any interference received,
 including interference that may cause undesired operation.

来料方式：卷装

NOTES (技术要求) :

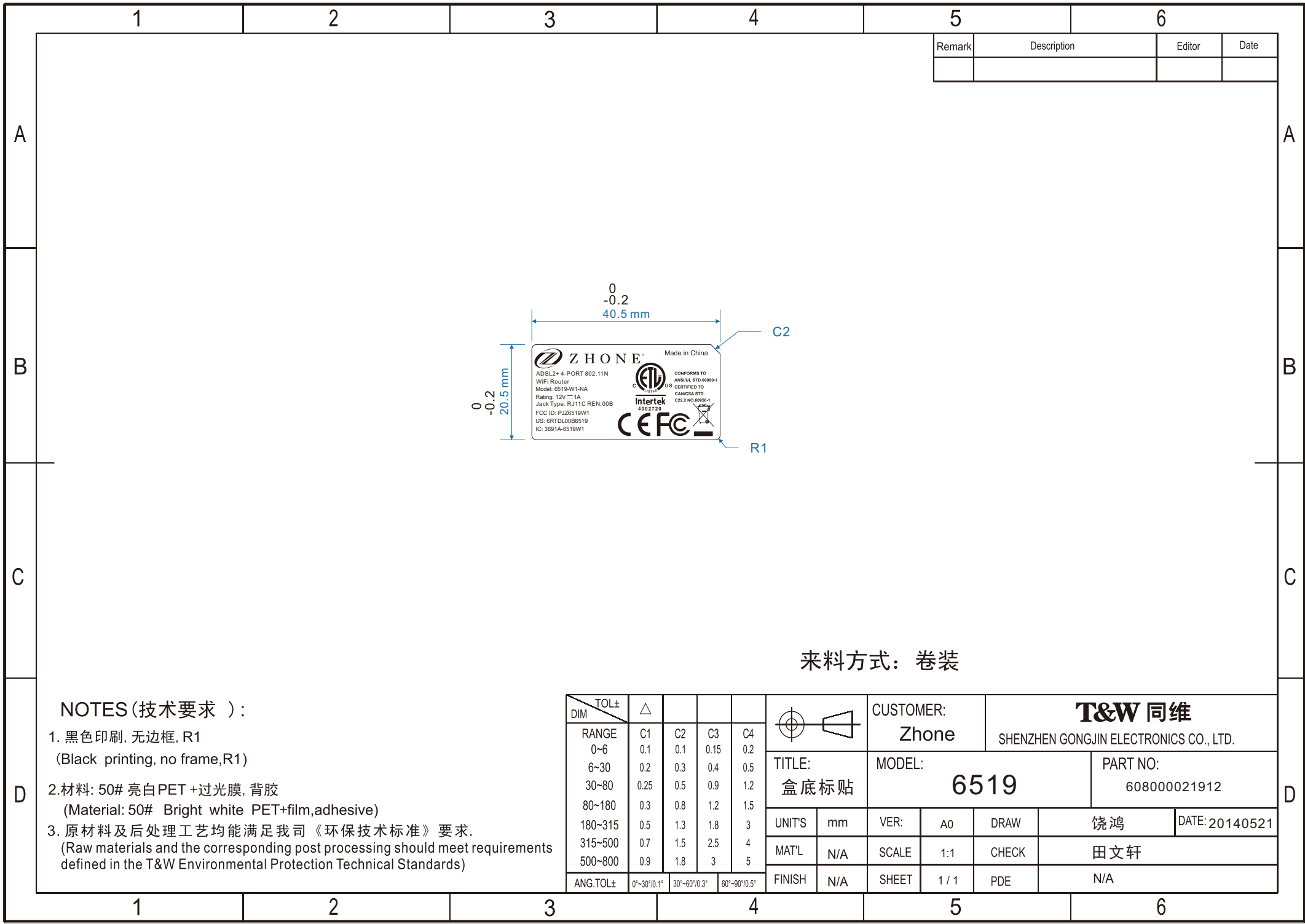
1. 黑色印刷, 无边框, R1
(Black printing, no frame, R1)
2. 材料: 54#合成纸, 背胶
(Material: 54# Compound paper, adhesive)
3. 原材料及后处理工艺均能满足我司《环保技术标准》要求。
(Raw materials and the corresponding post processing should meet requirements defined in the T&W Environmental Protection Technical Standards)

DIM	TOL±	△			
RANGE	C1	C2	C3	C4	
0~6	0.1	0.1	0.15	0.2	
6~30	0.2	0.3	0.4	0.5	
30~80	0.25	0.5	0.9	1.2	
80~180	0.3	0.8	1.2	1.5	
180~315	0.5	1.3	1.8	3	
315~500	0.7	1.5	2.5	4	
500~800	0.9	1.8	3	5	
ANG.TOL±	0°~30°/0.1°	30°~60°/0.3°	60°~90°/0.5°		

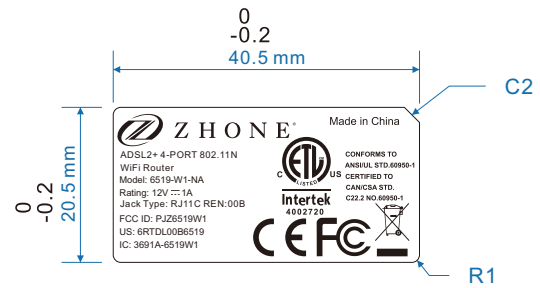


TITLE:
FCC标贴

CUSTOMER: Zhone		T&W 同维 SHENZHEN GONGJIN ELECTRONICS CO., LTD.			
MODEL: 6519		PART NO: 6080000XXXXXX			
UNIT'S	mm	VER:	A0	DRAW	饶鸿
MAT'L	N/A	SCALE	1:1	CHECK	牟宗娟
FINISH	N/A	SHEET	1 / 1	PDE	N/A
		DATE: 20150202			



Remark	Description	Editor	Date

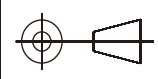


来料方式：卷装

NOTES (技术要求) :

1. 黑色印刷, 无边框, R1
(Black printing, no frame, R1)
2. 材料: 50# 亮白PET +过光膜, 背胶
(Material: 50# Bright white PET+film, adhesive)
3. 原材料及后处理工艺均能满足我司《环保技术标准》要求.
(Raw materials and the corresponding post processing should meet requirements defined in the T&W Environmental Protection Technical Standards)

DIM	TOL±	△			
RANGE	C1	C2	C3	C4	
0~6	0.1	0.1	0.15	0.2	
6~30	0.2	0.3	0.4	0.5	
30~80	0.25	0.5	0.9	1.2	
80~180	0.3	0.8	1.2	1.5	
180~315	0.5	1.3	1.8	3	
315~500	0.7	1.5	2.5	4	
500~800	0.9	1.8	3	5	
ANG.TOL±	0°~30°/0.1°	30°~60°/0.3°	60°~90°/0.5°		



CUSTOMER: Zhone		T&W 同维 SHENZHEN GONGJIN ELECTRONICS CO., LTD.			
TITLE: 盒底标贴		MODEL: 6519		PART NO: 608000021912	
UNIT'S	mm	VER:	A0	DRAW	饶鸿
MAT'L	N/A	SCALE	1:1	CHECK	田文轩
FINISH	N/A	SHEET	1 / 1	PDE	N/A
				DATE: 20140521	