

Photo documentation: internal photos

Photo 1: ID ISC.ANT1690/600 (ant. 1)

Gate 1 (multiplexer only)



Photo 2: ID ISC.ANT1690/600 (ant. 1)

Gate 1 (multiplexer only)

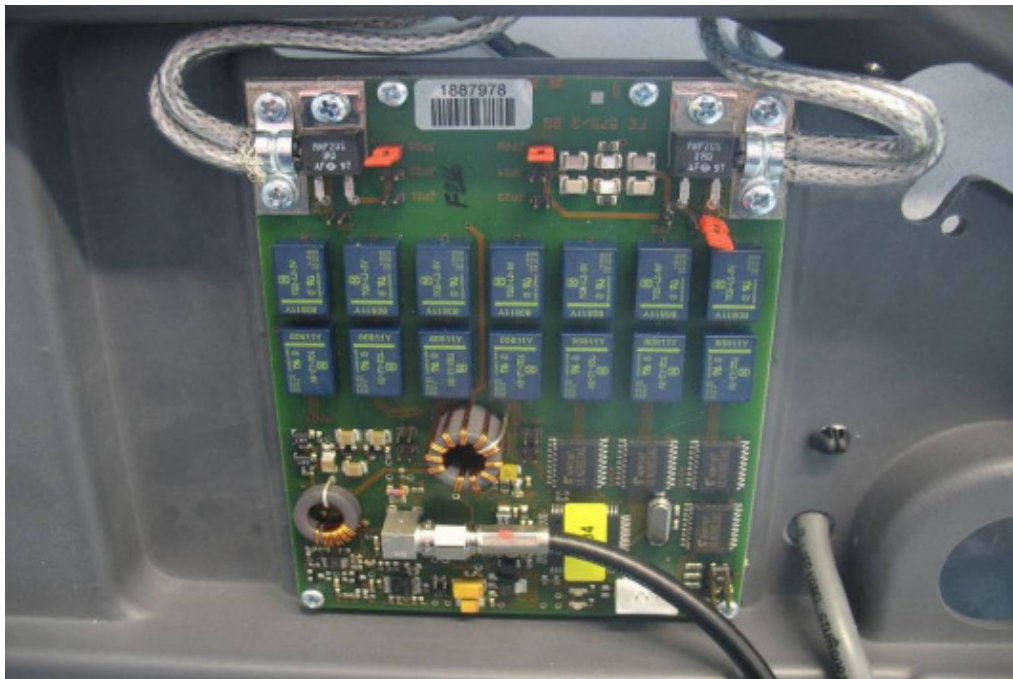


Photo 3: ID ISC.ANT1690/600 (ant. 1)

Gate 1 (multiplexer only)



Photo 4: ID ISC.ANT1690/600 (ant. 1)

Gate 2 (multiplexer & reader)



Photo 5: ID ISC.ANT1690/600 (ant. 1)

Gate 2 (multiplexer & reader)

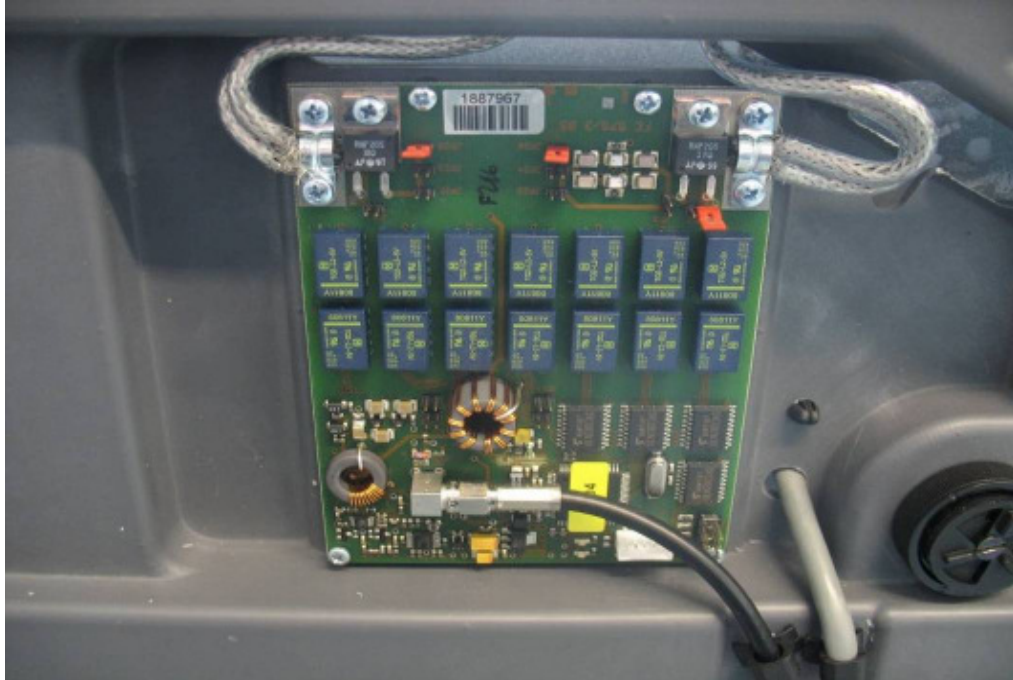


Photo 6: ID ISC.ANT1690/600 (ant. 1)

Gate 2 (multiplexer & reader)

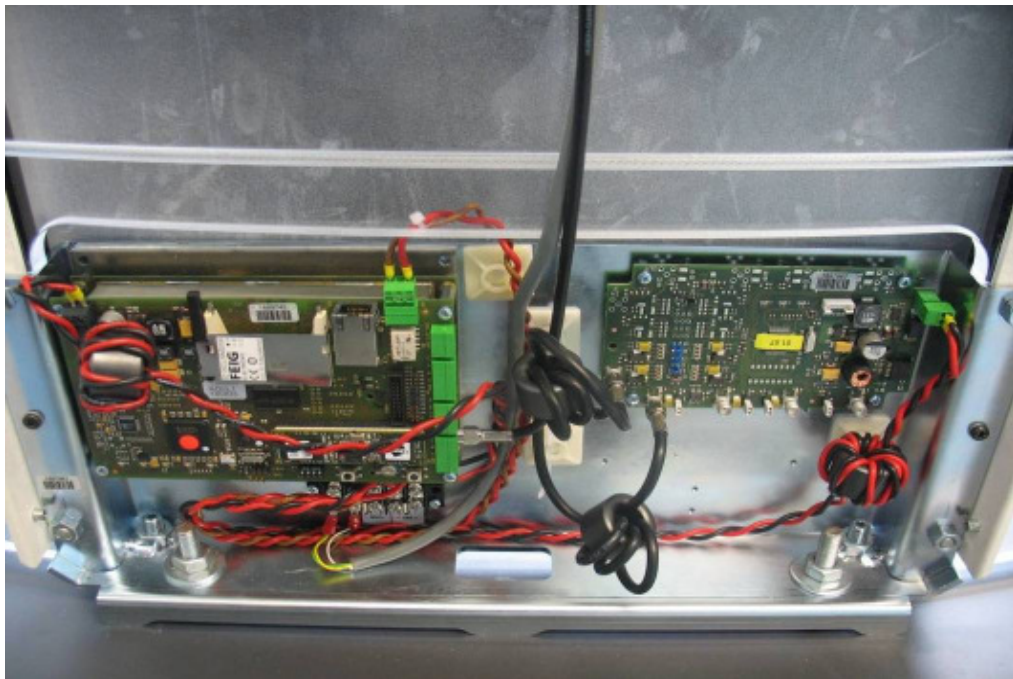


Photo 7: ID ISC.ANT1690/600 (ant. 1)

Gate 2 (multiplexer & reader)



Photo 8: ID ISC.ANT1690/600 (ant. 1)

Gate 2 (multiplexer & reader)



Photo 9: ID ISC.ANT1690/600 (ant. 1)

Gate 2 (multiplexer & reader)

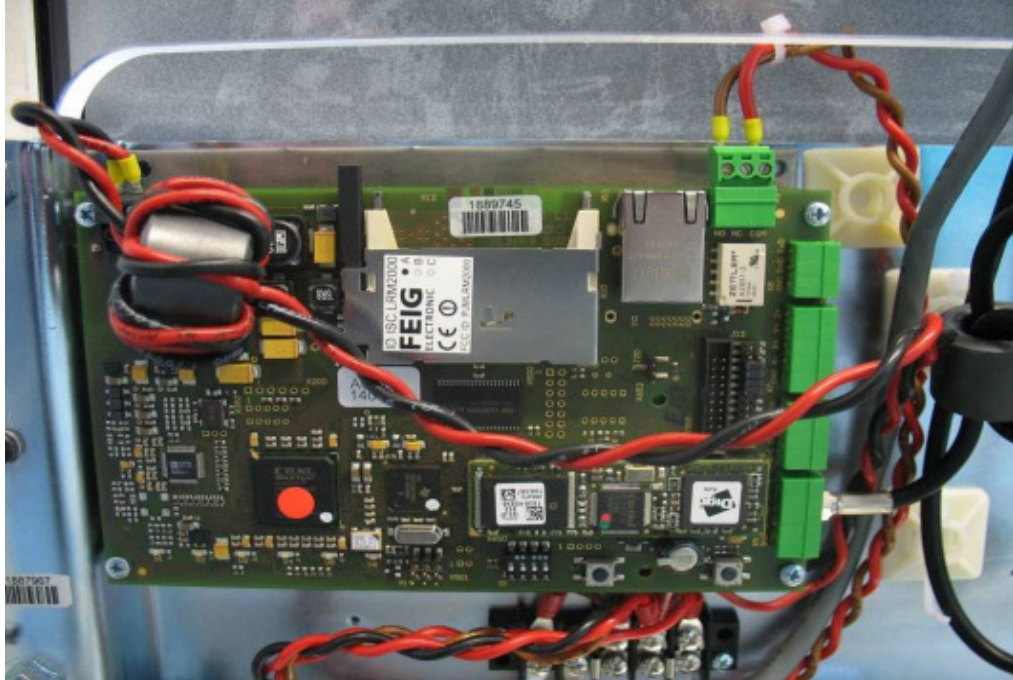


Photo 10: ID ISC.ANT1700/740 (ant. 2)

Gate 1 (multiplexer only)



Photo 11: ID ISC.ANT1700/740 (ant. 2)

Gate 1 (multiplexer only)



Photo 12: ID ISC.ANT1700/740 (ant. 2)

Gate 1 (multiplexer only)

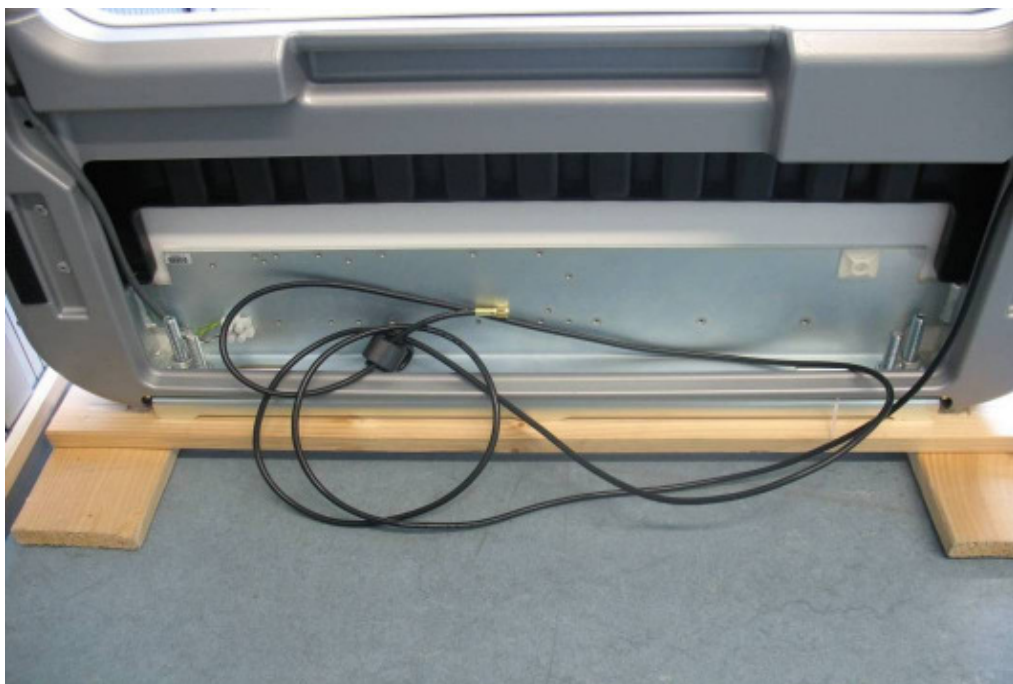


Photo 13: ID ISC.ANT1700/740 (ant. 2)

Gate 2 (multiplexer & reader)





Photo 14: ID ISC.ANT1700/740 (ant. 2)

Gate 2 (multiplexer & reader)



Photo 15: ID ISC.ANT1700/740 (ant. 2)

Gate 2 (multiplexer & reader)

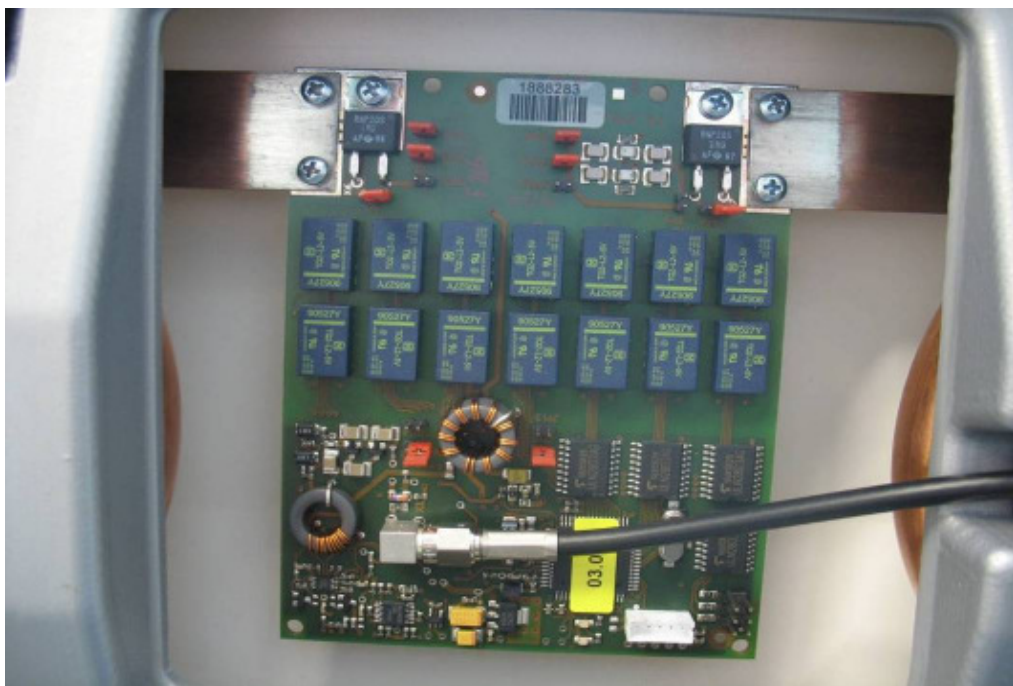


Photo 16: ID ISC.ANT1700/740 (ant. 2)

Gate 2 (multiplexer & reader)

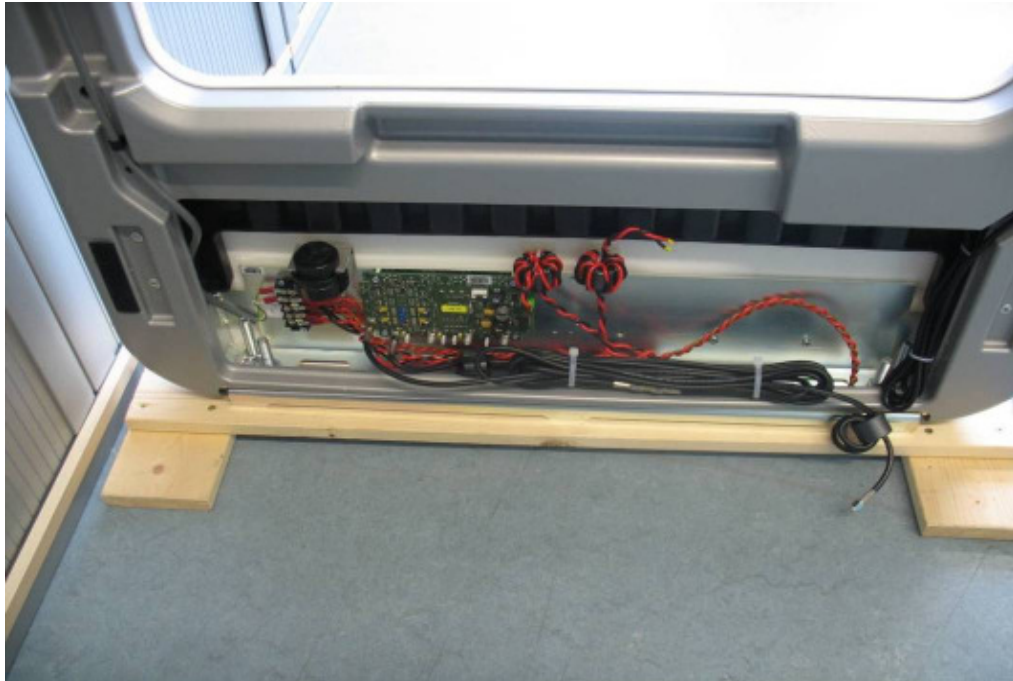


Photo 17: ID ISC.ANT1700/740 (ant. 2)

Gate 2 (multiplexer & reader)

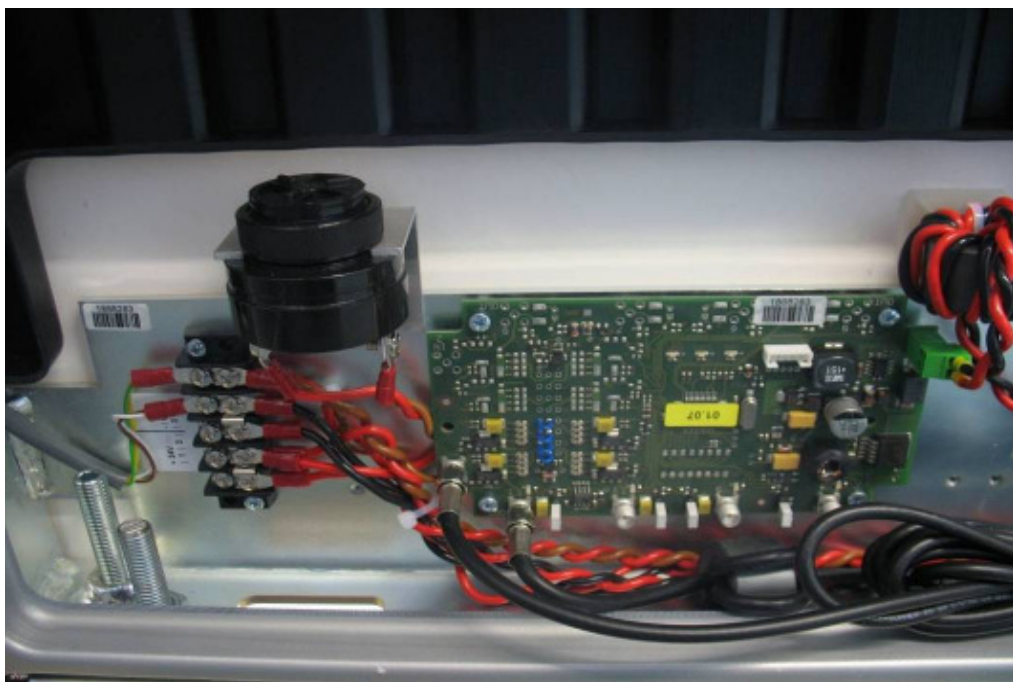


Photo 18: ID ISC.ANT1700/740 (ant. 2)

Gate 2 (multiplexer & reader)



Photo 19: ID ISC.ANT310/310 (ant. 3)

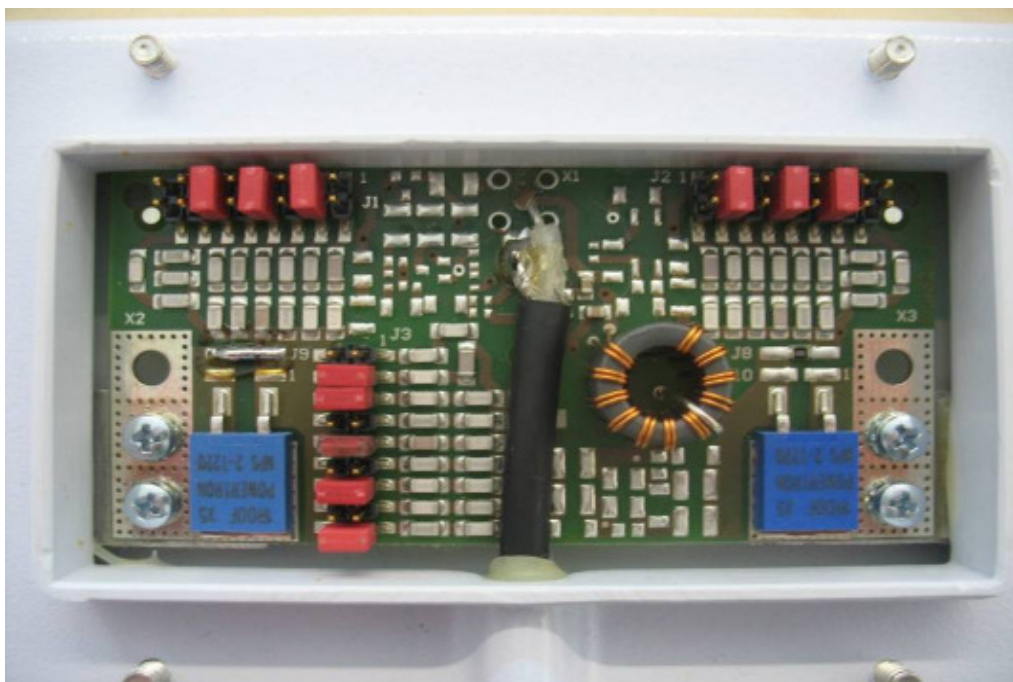


Photo 20: ID ISC.LRM 2000



Photo 21: ID ISC.LRM 2000

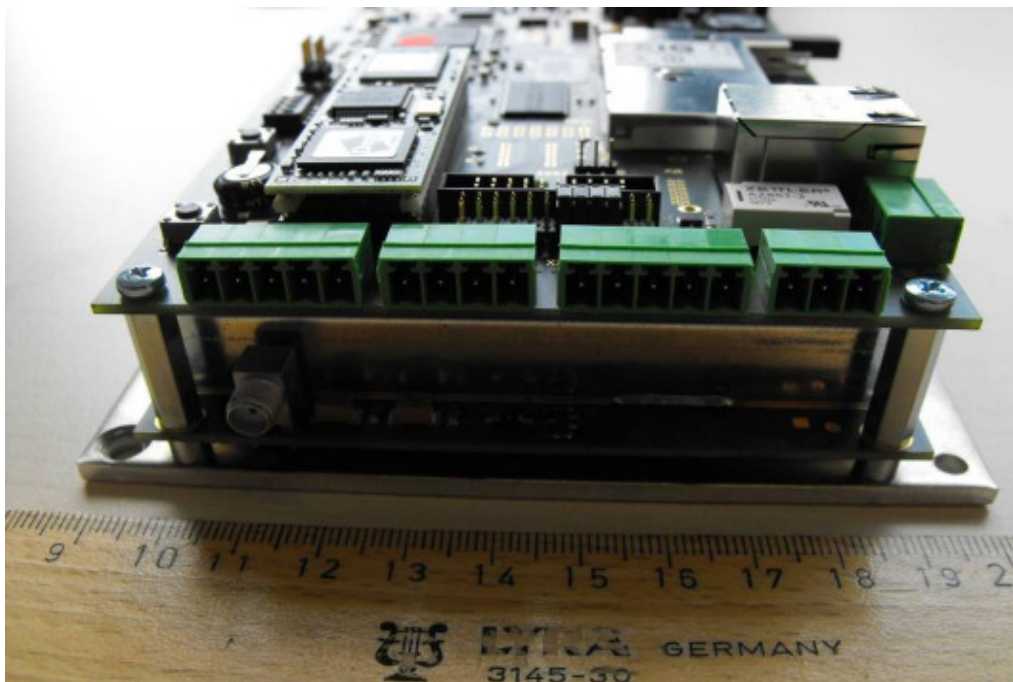


Photo 22: ID ISC.LRM 2000

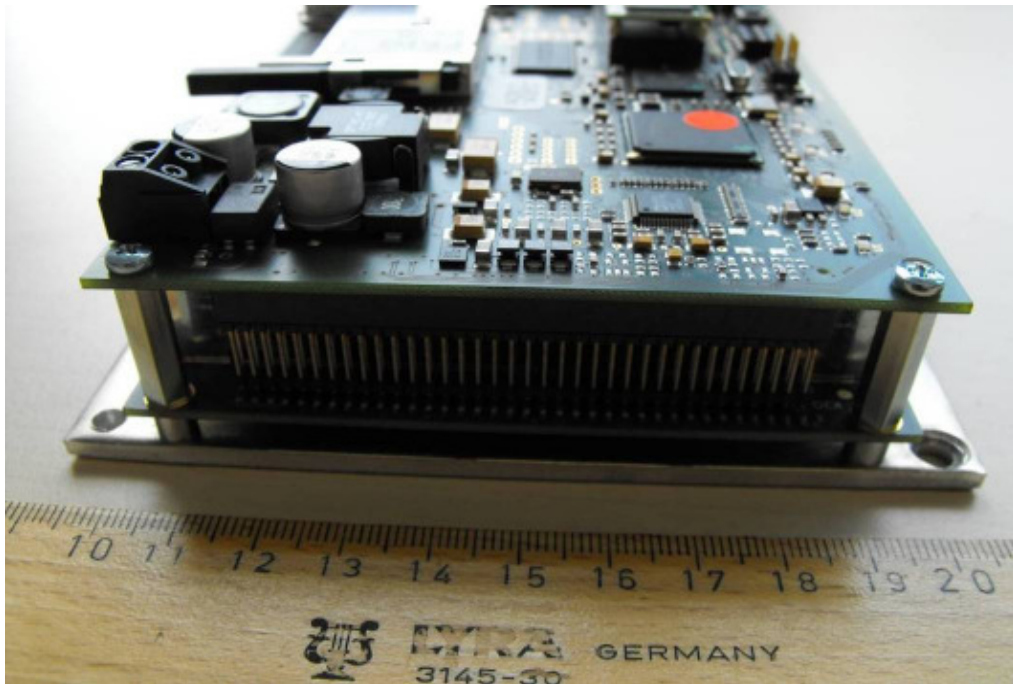


Photo 23: ID ISC.LRM 2000



Photo 24: ID ISC.LRM 2000

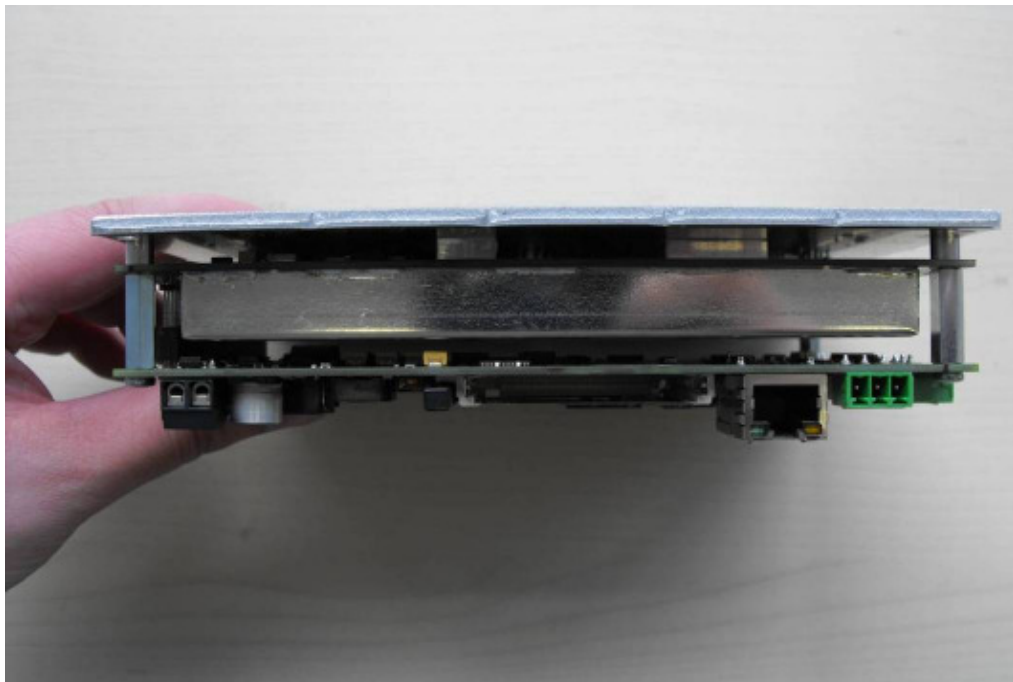


Photo 25: ID ISC.LRM 2000



Photo 26: ID ISC.LRM 2000



Photo 27: ID ISC.LRM 2000

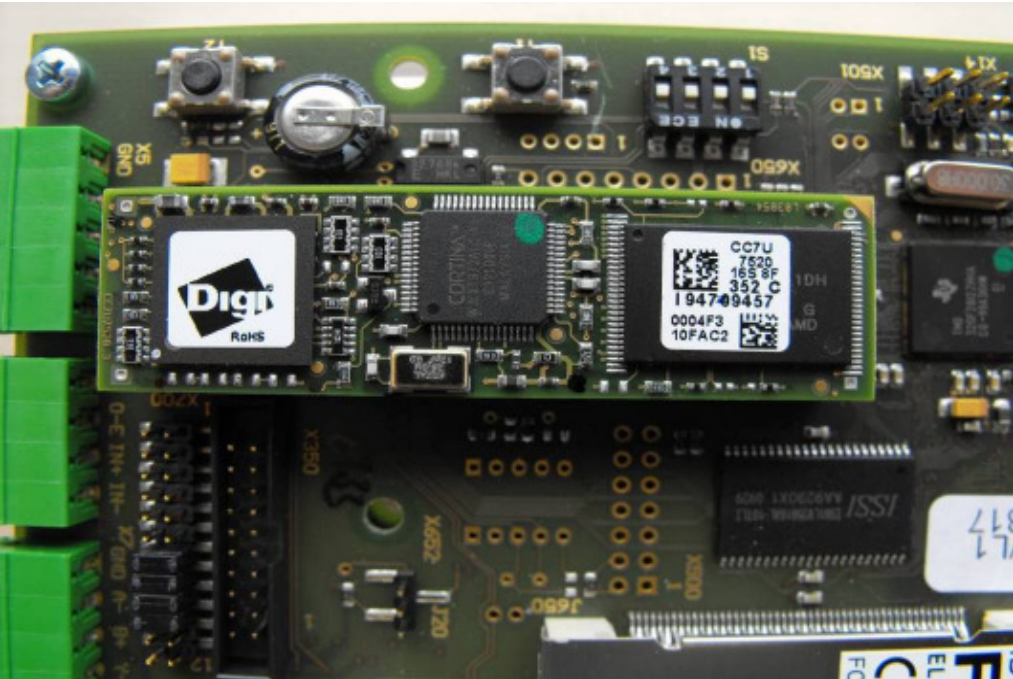


Photo 28: ID ISC.LRM 2000

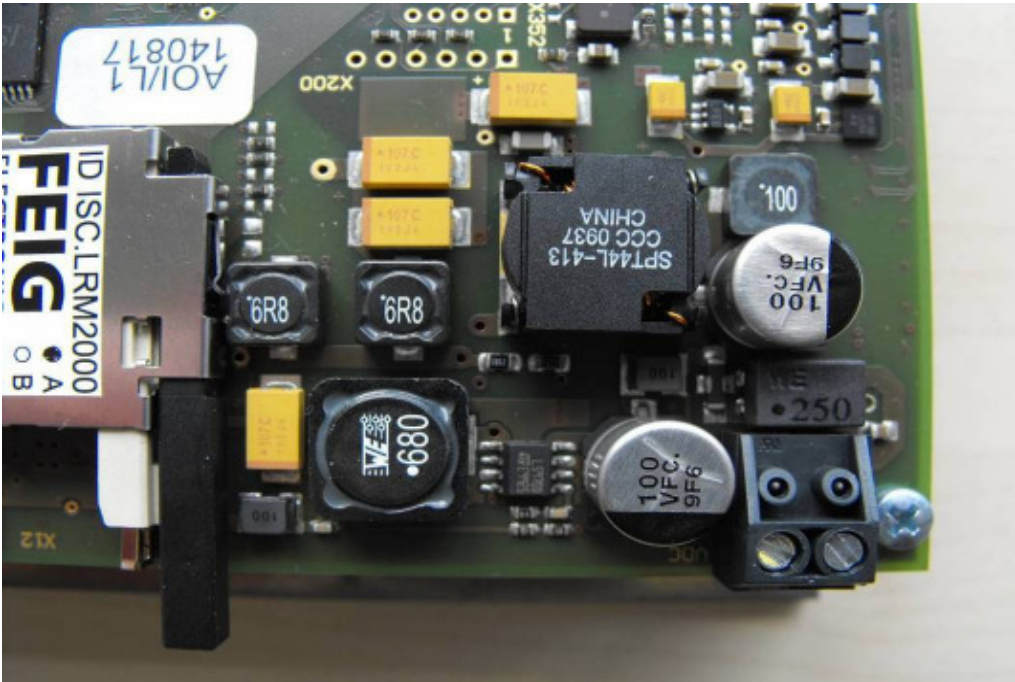


Photo 29: ID ISC.LRM 2000

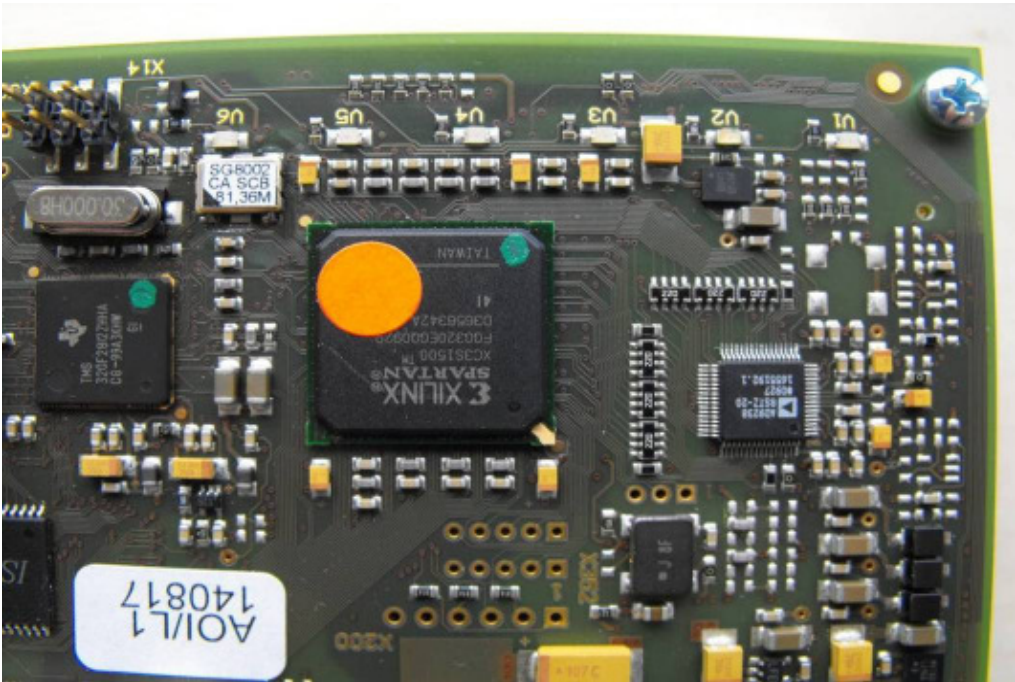




Photo 30: ID ISC.LRM 2000



Photo 31: ID ISC.LRM 2000

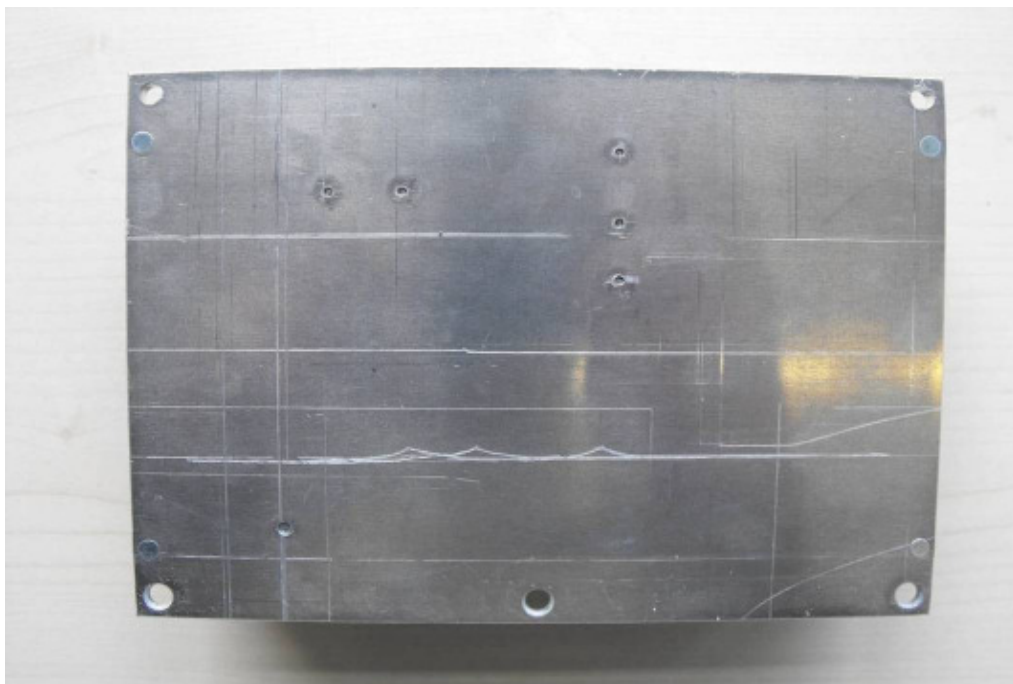


Photo 32: ID ISC.LRM 2000

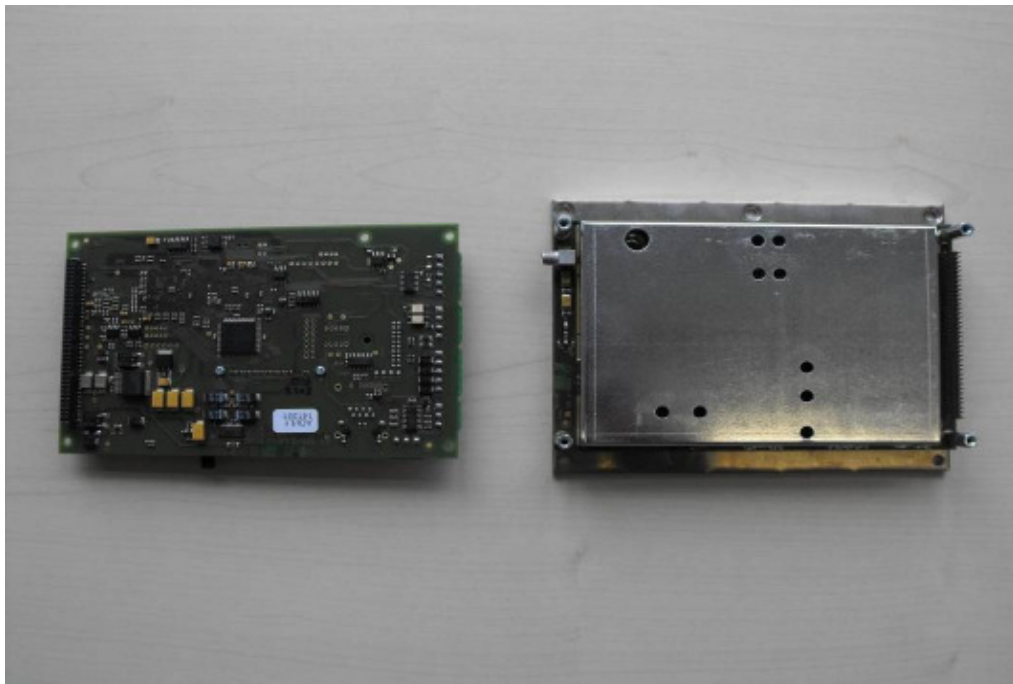


Photo 33: ID ISC.LRM 2000

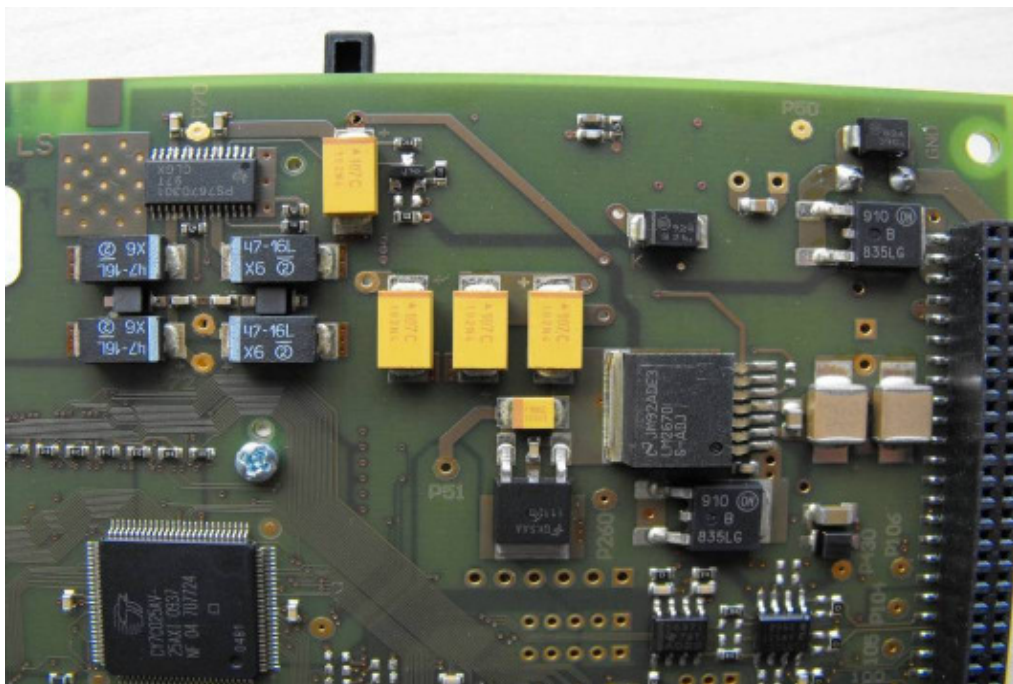


Photo 34: ID ISC.LRM 2000

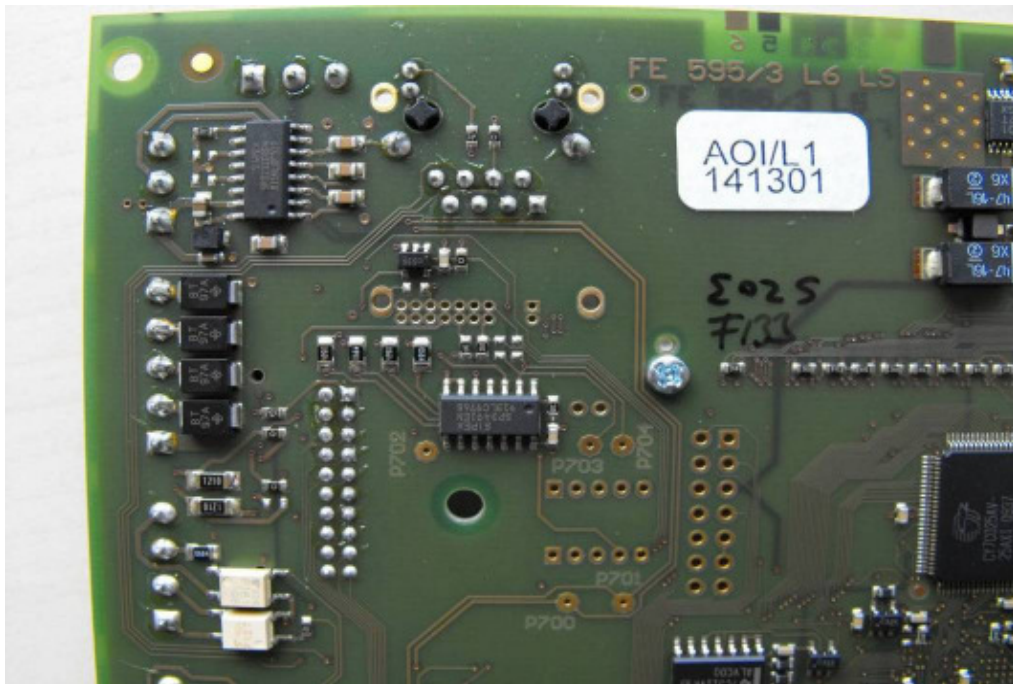


Photo 35: ID ISC.LRM 2000

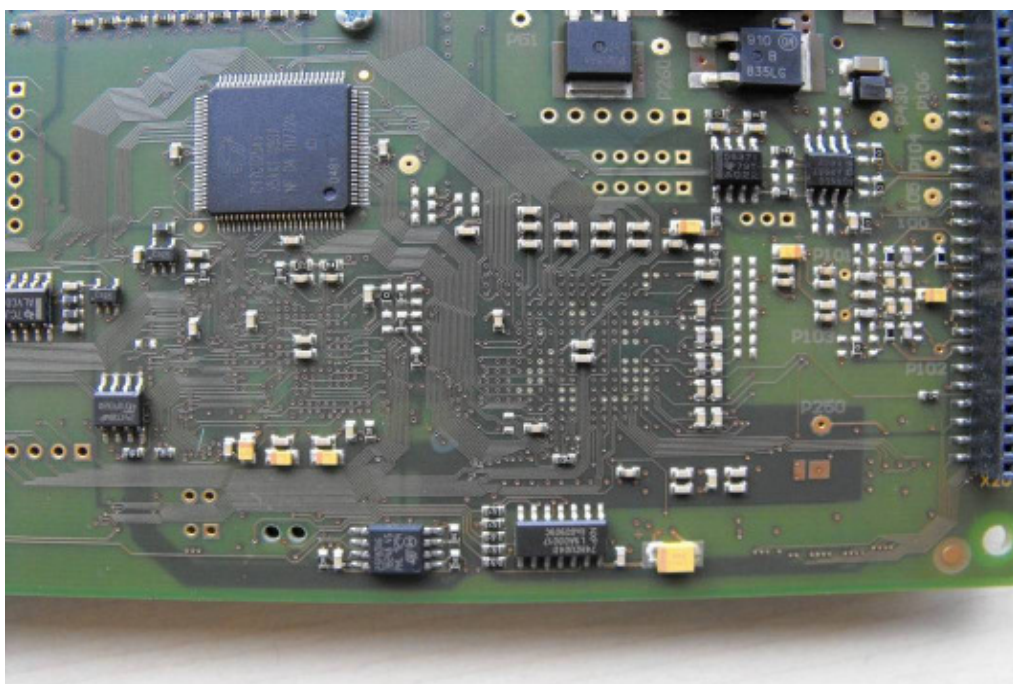


Photo 36: ID ISC.LRM 2000

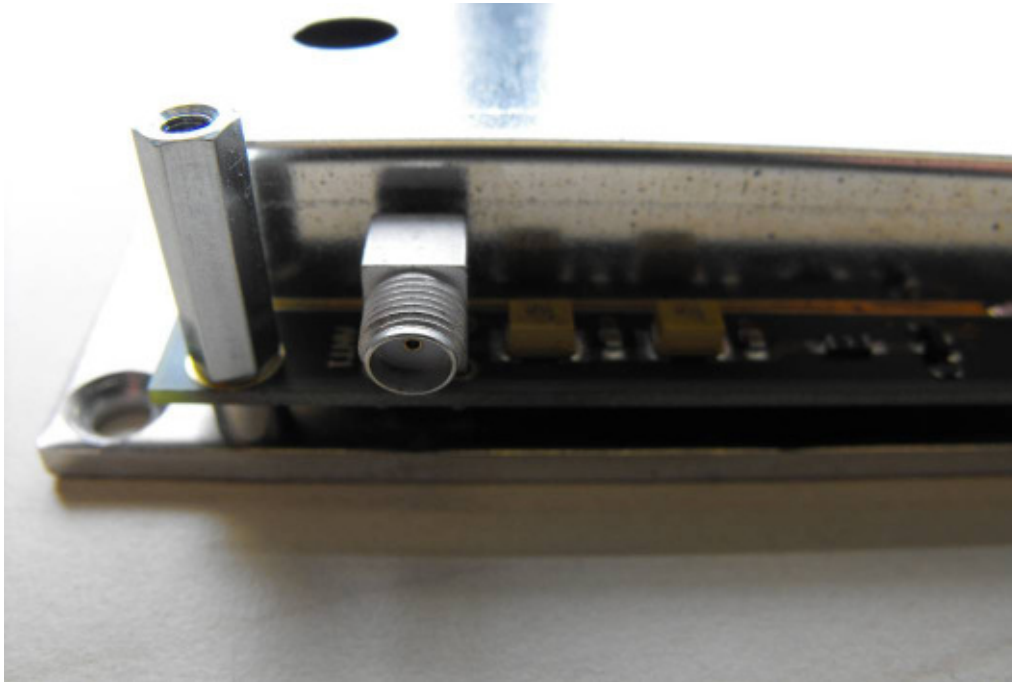


Photo 37: ID ISC.LRM 2000

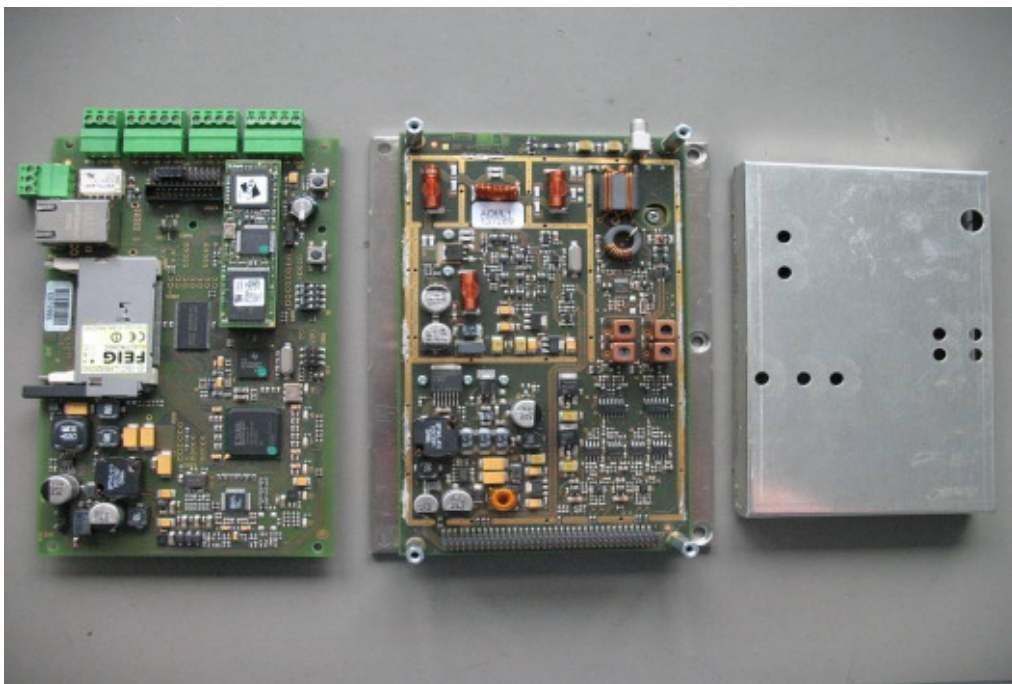


Photo 38: ID ISC.LRM 2000

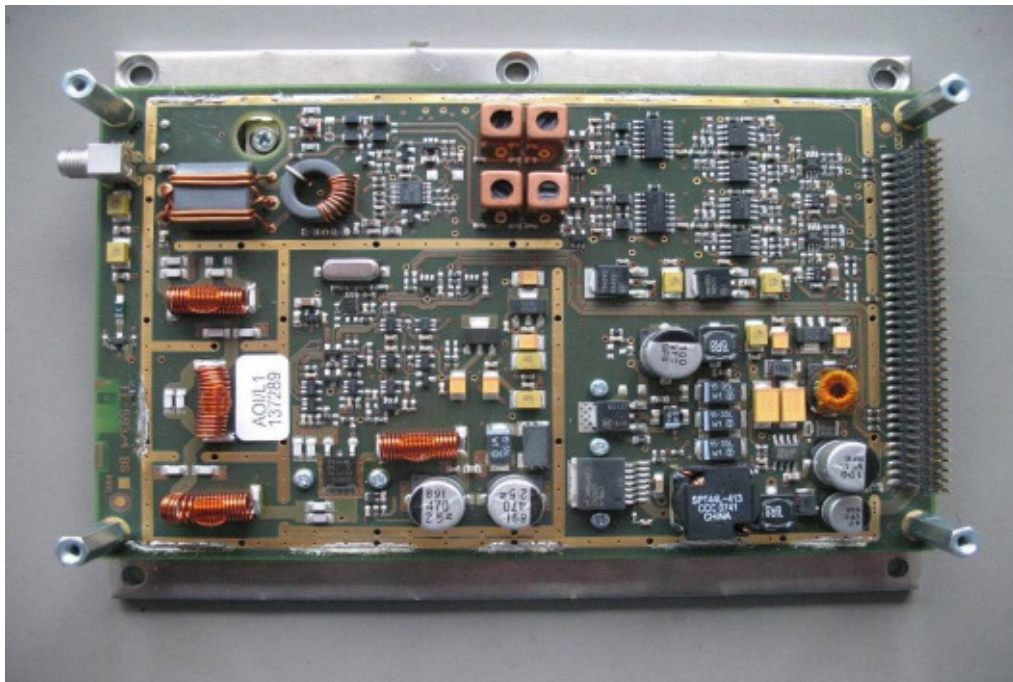


Photo 39: ID ISC.LRM 2000

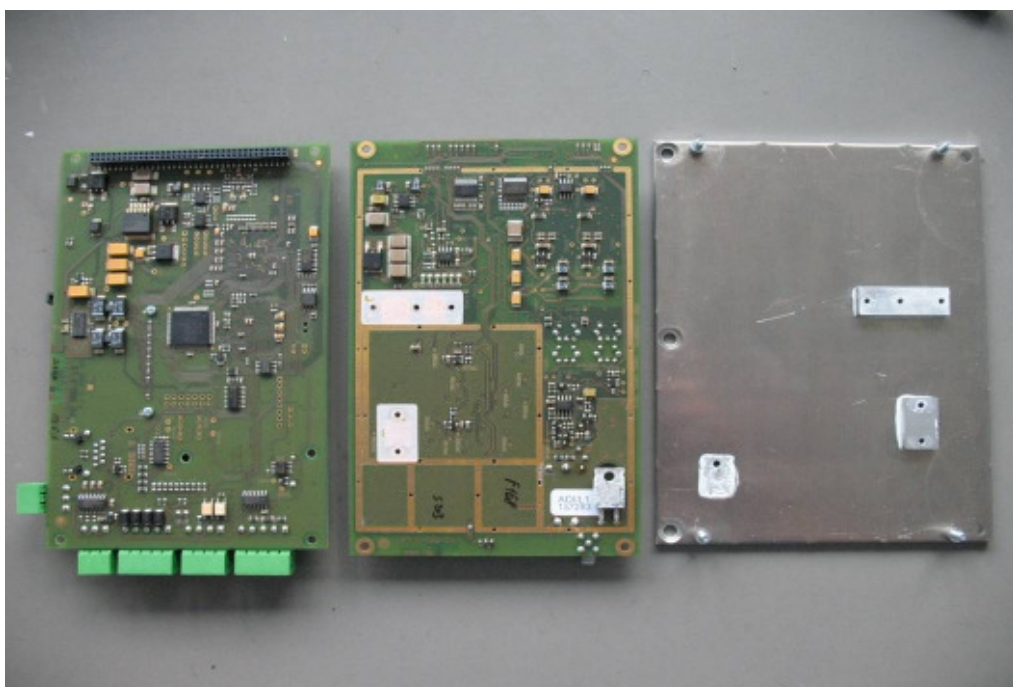


Photo 40: ID ISC.LRM 2000

