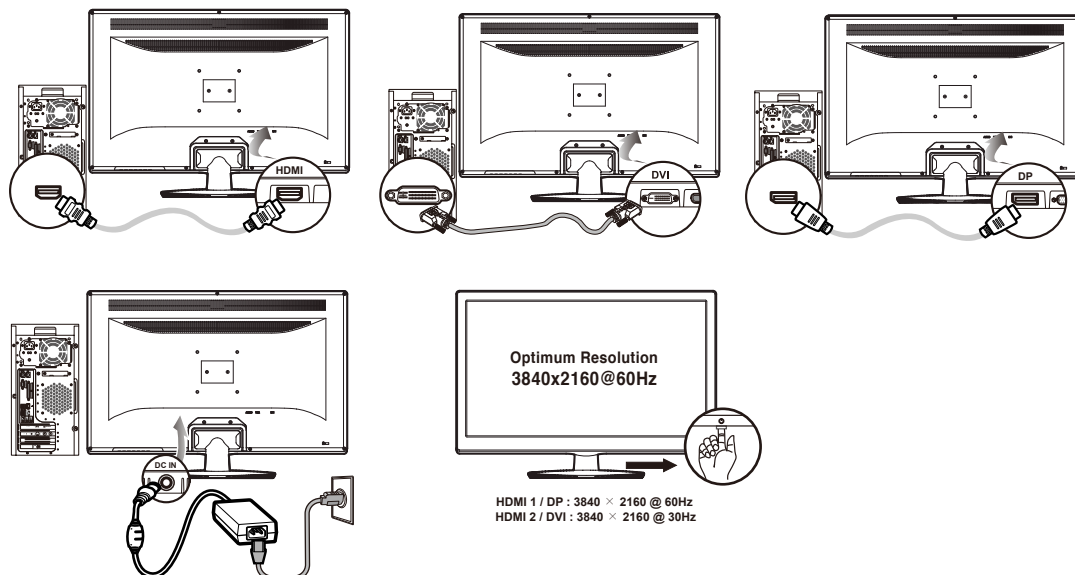
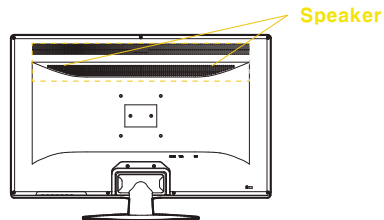


# Operational Description

After connecting the signal cable you want to use, Turn on the power to the computer. The picture will appear within about 10 seconds.



This monitor has an audio system including two micro loudspeakers. Each of two speakers has an 2W(Max) output. This system also supports a headphone output jack.(Option)



OSD screen selection and control procedures.

1. Press the "MENU" button to bring up the screen.
  2. Press the "◀,▶" buttons to select the main option.
  3. Press the "▼" button after selecting the main option.
  4. Bring up the sub-menu. Use the "◀,▶" buttons to select the desired option.
  5. Press the "▼" button after selecting the desired sub-menu option.
  6. Use the "◀,▶" buttons to adjust the set value.
  7. Pressing the "▲" button Three times saves and exits the setting mode.
- \* Pressing the "▲" button moves back to the previous menu.

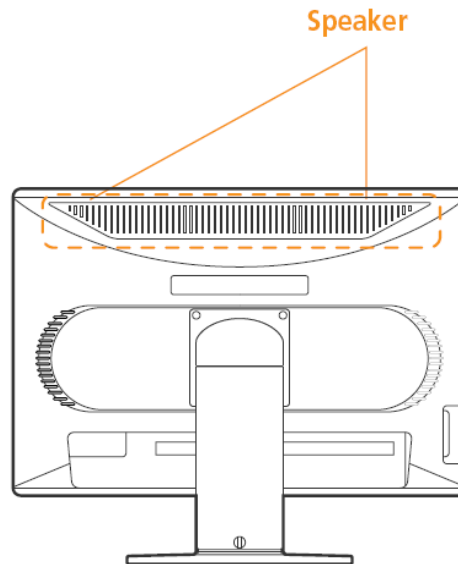


## Operational Description

---

This monitor has an audio system including two micro loudspeakers. Each of two micro loudspeakers has an 3W(max.) output power. This system also supports a headphone output jack.

**!** This system has been tuned to get a best tone quality which an audio input level is under 500mv rms. If the input level is more than 500mv rms, you must tune down the audio input as the audio output tone may be distorted.



Follow the instructions below to set your refresh rate in Windows 98/ME/XP/2000.

1. Go to the configuration window(Start-Settings-Configuration window).
2. Double click on the 'Display' icon.
3. Click on the 'Settings' tab.
4. Click on the 'Advanced' button.
5. Click on 'Adapter' and select 60Hz from the list.
6. Click on 'Apply' to accept the selected value.

