



FCC ID : PJILT32AW000

---

July 9, 2004  
Federal Communications Commission  
Equipment Approval Services  
7435 Oakland Mills Road  
Columbia, MD 21046

**SUBJECT : Hyundai ImageQuest Co., Ltd.  
FCC ID: PJILT32AW000  
FCC Part 15 Subpart B Certification**

Gentlemen:

Transmitted herewith, on behalf of Hyundai ImageQuest Co., Ltd. is an application for a FCC Part 15 Subpart B Certification of the following 32-inch LCD Monitor:

**FCC ID : PJILT32AW000  
Model No. / Type No.: HQL320WR / LT32AW000**

Attached is the applicant's Cover Letter, External/Internal Photos, Test Set-Up Photos, FCC ID & Label Location, User Manual, Block Diagram and Test Report.

Should you have any questions or comments concerning the above, please contact the undersigned.

*Ki Soo Kim*

KI SOO KIM  
EMC MANAGER

cc: Mr. HEE JUNG KIM ----- R & D CENTER / MANAGER

## •Solution for EMI

**We, Hyundai ImageQuest CO., LTD. , announce that all modifications will be incorporated into each unit sold in the U.S.**

1. **Attach copper foil on the mainframe cover for OSD and audio signal cable fixed.  
And Apply a ferrite core to the audio, video and OSD board signal cable.**
2. **Attach a gasket on the LCD panel back cover inside.**
3. **Attach a gasket on the main board case.**
4. **Attach a gasket on the LCD panel case.**
5. **Attach a gasket on the main board.**
6. **Attach a gasket on tuner and tuner board.**

**(Please refer to next page of the photographs for Solution for EMI)**

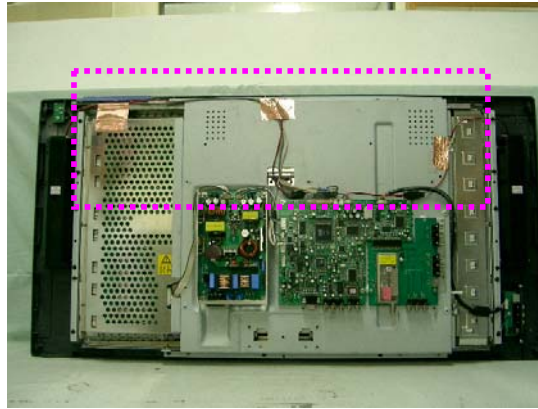
**Hyundai ImageQuest CO., LTD.**

**2004. 7. 9**

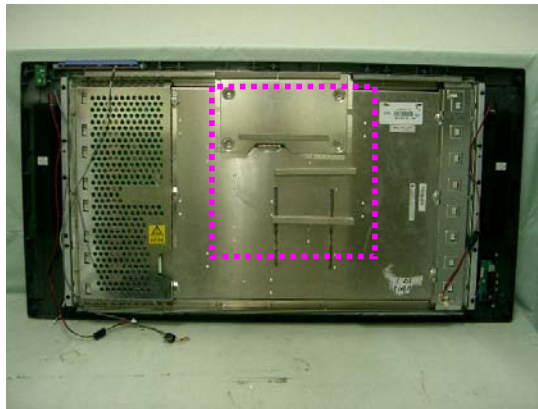
**R & D CENTER / MANAGER  
HEE JUNG KIM**



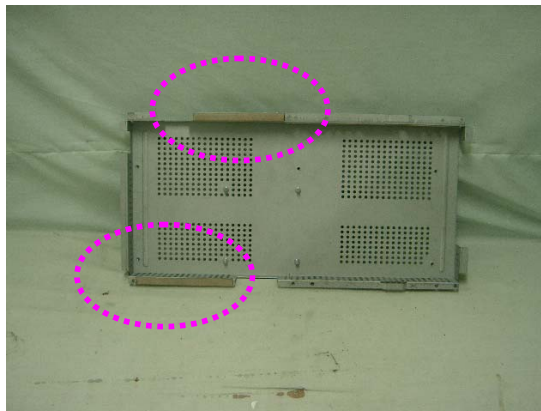
1. Attach copper foil on the mainframe cover for OSD and audio signal cable fixed.  
And Apply a ferrite core to the audio, video and OSD board signal cable.



2. Attach a gasket on the LCD panel back cover inside.



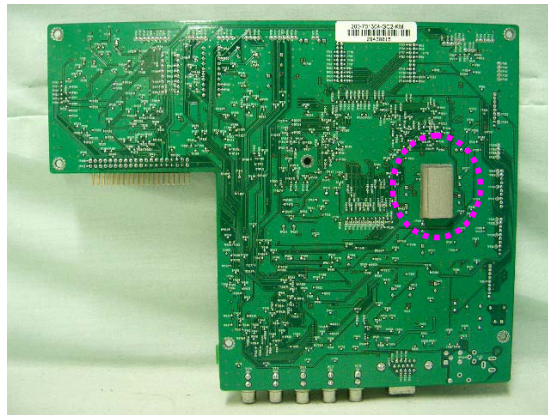
3. Attach a gasket on the main board case.



4. Attach a gasket on the LCD panel case.



5. Attach a gasket on the main board .



6. Attach a gasket on tuner and tuner board.

