

---

January 10, 2006  
Federal Communications Commission  
Equipment Approval Services  
7435 Oakland Mills Road  
Columbia, MD 21046

**SUBJECT : Hyundai ImageQuest Co., Ltd.**  
**FCC ID: PJILT26DW000**  
**FCC Part 15 Subpart B Certification**

Gentlemen:

Transmitted herewith, on behalf of Hyundai ImageQuest Co., Ltd. is an application for a Class II Permissive Change Certification of the following 26-inch LCD TV Monitor:

**FCC ID : PJILT26DW000**  
**Model/TYPE : A261/LT26DW000**

Attached is the applicant's Cover Letter, External/Internal Photos, Test Set-Up Photos, FCC ID & Label Location, User Manual, Block Diagram and Test Report.

Should you have any questions or comments concerning the above, please contact the undersigned.

*Sang Jun Lee*

---

**Sang Jun LEE**  
**EMC MANAGER**

cc: Mr. HEE JUNG KIM ----- R & D CENTER / MANAGER

## •Solution for EMI

**We, Hyundai ImageQuest CO.,LTD. , announce that all modifications will be incorporated into each unit sold in the U.S.**

1. Attach aluminum tape on the Rear frame
2. Attach fabric tape on the Rear frame.
3. Attach a gasket on the inside frame.
4. Attach a gasket on the main board case.
5. Attach a gasket on the LCD Panel Rear cover
6. Attach aluminum tape on the LCD Panel Rear cover

(Please refer to next page of the photographs for Solution for EMI)

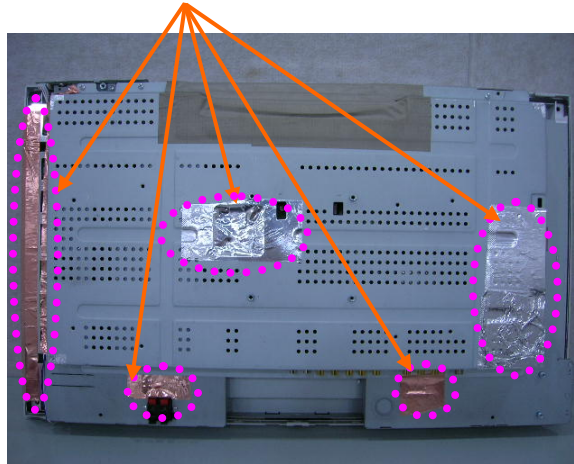
**Hyundai ImageQuest CO.,LTD.**

**2006. 01. 10**

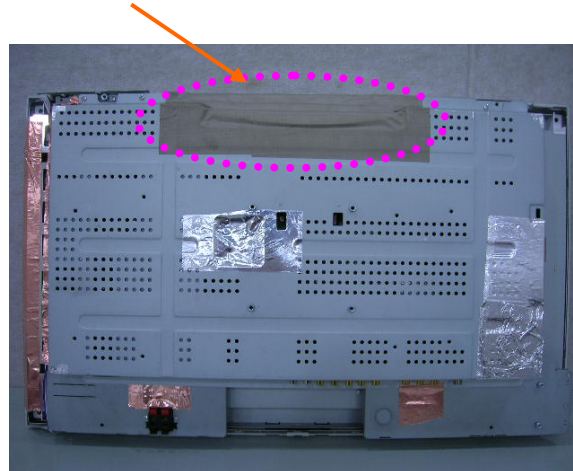
**R & D CENTER / MANAGER  
HEE JUNG KIM**



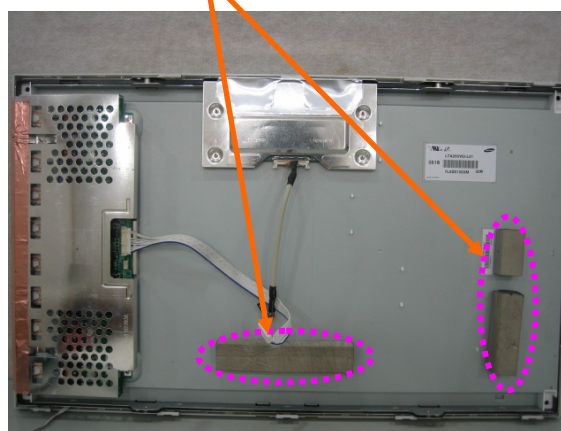
**1. Attach aluminum tape on the Rear frame**



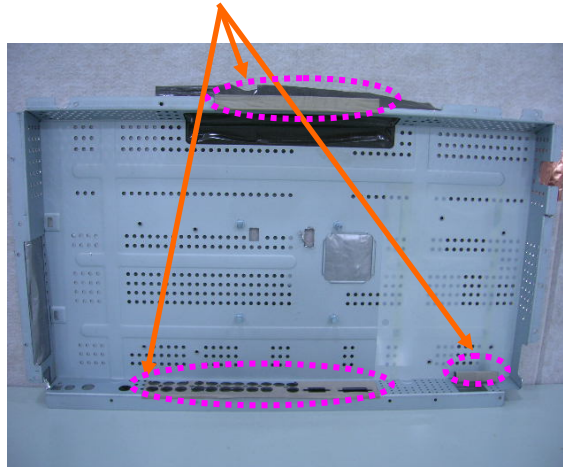
**2. Attach fabric tape on the Rear frame.**



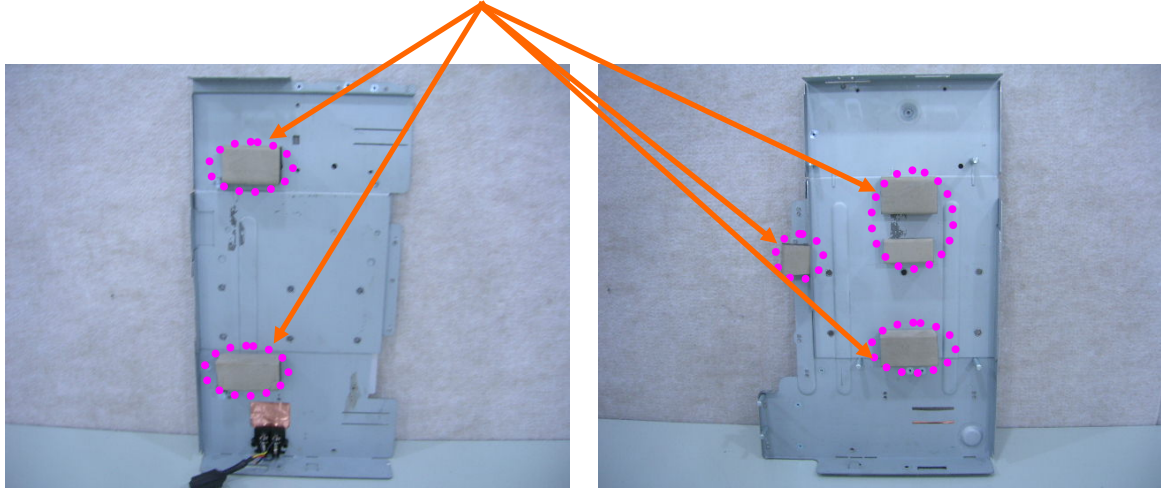
**3. Attach a gasket on the Rear Panel**



**4. Attach a gasket on the main board case.**



**5. Attach a gasket on the LCD Panel Rear cover**



**6. Attach aluminum tape on the LCD Panel Rear cover**

