

HYUNDAI CALIBRATION & CERTIFICATION TECH. CO., LTD.

Product Compliance Division, EMC Team
SAN 136-1, AMI-RI , BUBAL-EUP, ICHEON-SI, KYOUNKI-DO, 467-701, KOREA
TEL : +82 31 639 8517 FAX : +82 31 639 8525

CERTIFICATION

Manufacture;
HYUNDAI IMAGEQUEST CO., LTD.

SAN 136-1, AMI-RI , BUBAL-EUP, ICHEON-SI,
KYOUNKI-DO, 467-701, KOREA

HYUNDAI IMAGEQUEST FRN : 0005-8664-39

Date of Issue : JUNE 27,2004

Test Report No.: HCT-F04-0602

Test Site: HYUNDAI CALIBRATION & CERTIFICATION
TECHNOLOGIES CO., LTD.

HCT FRN : 0005-8664-21

FCC ID :

PJILT20A0000

MODEL / TYPE :

HQL200NR / LT20A0000

Rule Part(s): Part 15 & 2; ET Docket 95-19
Equipment Class: FCC Class B Peripheral Device (JBP)
Standard(s): FCC Class B (CISPR 22)
EUT Type: 20" LCD Monitor
Max. Resolution(s): 1024 X 768(@60.0KHz/75Hz)
Model / Type: HQL200NR / LT20A0000
Port/Connector(s): AC Input, Antenna, D-SUB, Component input for DTV or DVD, Audio, S-video, Composite, Head phone, Audio input, SCART .
LCD Panel Samsung Electronics (LTA200V1-L02)

This equipment has been shown to be in compliance with the applicable technical standards as indicated in the measurement report and was tested in accordance with the measurement procedures specified in ANSI C63.4-2001 (Grant Notes: #19, #28).

I attest to the accuracy of data. All measurements reported herein were performed by me or were made under my supervision and are correct to the best of my knowledge and belief. I assume full responsibility for the completeness of these measurements and vouch for the qualifications of all persons taking them.



Report prepared by : Ki-Soo Kim
Manager of EMC Tech. Part



TABLE OF CONTENTS

PAGE

REPORT COVER	1
TABLE OF CONTENTS	2
1.1 SCOPE	3
2.1 INTRODUCTION (SITE DESCRIPTION)	4
3.1 PRODUCTION INFORMATION	5-6
4.1 DESCRIPTION OF TESTS (CONDUCTED)	7
4.3 DESCRIPTION OF TESTS (RADIATED)	8
5.1 LIST OF SUPPORT EQUIPMENT	9-11
6.1 TEST DATA (CONDUCTED)	12-14
7.1 TEST DATA (RADIATED)	15
8.1 SAMPLE CALCULATIONS	16
9.1 TEST EQUIPMENT	17
10.1 TEST SOFTWARE USED	18
11.1 CONCLUSION	19

ATTACHMENT A: FCC ID LABEL & LOCATION

ATTACHMENT B: EXTERNAL PHOTOGRAPHS

ATTACHMENT C: BLOCK DIAGRAM

ATTACHMENT D: TEST SETUP PHOTOGRAPHS

ATTACHMENT E-1: USER'S MANUAL 1

ATTACHMENT E-2: USER'S MANUAL 2

ATTACHMENT F-1: INTERNAL PHOTOGRAPHS 1

ATTACHMENT F-2: INTERNAL PHOTOGRAPHS 2

MEASUREMENT REPORT

1.1 Scope

Measurement and determination of electromagnetic emissions (EME) of radio frequency devices including intentional and/or unintentional radiators for compliance with the technical rules and regulations of the Federal Communications Commission.

Applicant Name:	HYUNDAI IMAGEQUESTCO., LTD.
Address:	SAN 136-1, AMI-RI , BUBAL-EUP, ICHEON-SI, KYOUINKI-DO, 467-701,KOREA

- **FCC ID : PJILT20A0000**
- Equipment Class: FCC Class B Peripheral Device (JBP)
- EUT Type: 20" LCD MONITOR
- Model / Type: HQL200NR / LT20A0000
- LCD Panel: Samsung Electronics (LTA200V1-L02)
- Max. Resolution: 1024 X 768(@60.0KHz/75Hz)
- Frequency Range: V-Sync: 60Hz – 75Hz , H-Sync: 31.5KHz – 60KHz
- Cable(s): Shielded D-Sub, Shielded S-Video(with ferrite on both ends), Shielded A/V Input, Shielded Antenna Input(with ferrite on both ends).
- Power Cord: Unshielded
- Rule Part(s): FCC Part 15 Subpart B
- Test Procedure(s): ANSI C63.4 (2001)
- Dates of Tests: JUNE 21 ~ JUNE 24,2004
- Place of Tests: 254-1, MAEKOK-RI, HOBUP-MYUN, ICHON-SI, KYOUNGKI-DO, 467-701, KOREA

2.1 INTRODUCTION

The measurement procedure described in American National Standard for Methods of Measurement of Radio-Noise Emissions from Low-Voltage Electrical and Electronic Equipment in the Range of 9kHz to 40GHz (ANSI C63.4-2001) was used in determining radiated and conducted emissions emanating from **HYUNDAI IMAGEQUEST CO.,LTD. 20-inch LCD Monitor FCC ID: PJILT20A0000**

The open area test site and conducted measurement facility used to collect the radiated data are located at the 254-1, MAEKOK-RI,HOBUP-MYUN,ICHON-SI,KYOUNGKI-DO, 467-701,KOREA. The site is constructed in conformance with the requirements of ANSI C63.4and CISPR Publication 22. Detailed description of test facility was submitted to the Commission and accepted dated July 23, 2003 (Confirmation Number: EA90661)

3.1 PRODUCT INFORMATION

3.2 Equipment Description

Equipment Under Test (EUT) is the **HYUNDAI IMAGEQUEST CO., LTD.**
(Model / Type: HQL200NR / LT20A0000) 20-inch LCD Monitor.

FCC ID: : **PJILT20A0000**

Maximum Resolution(s):1024 X 768(@60.0KHz/75Hz),

Frequency Range(s): H-Sync: 31.5KHz – 60KHz
V-Sync: 60Hz – 75 Hz

Pixel Pitch: 0.2115 mm X 0.6345 mm

Power Supply: AC 100-240V 50/60Hz 2.0A 75W

Power Cord: Unshielded AC power cord

Port(s)/Input Connector(s): D-Sub, S-Video, Component A/V Input , Composite A/V Input, Antenna
Input, SCART.

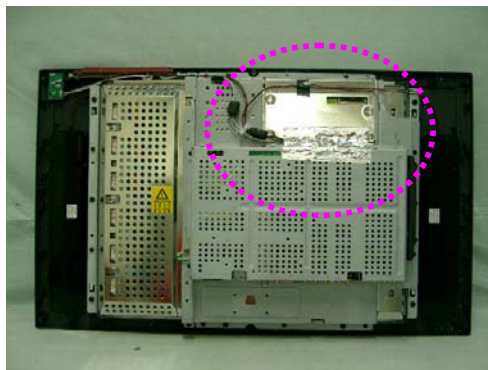
Cable(s): Shielded D-Sub, Shielded S-Video(with ferrite on both ends), Shielded A/V Input, Shielded
Antenna Input(with ferrite on both ends) , Shielded SCART Input.

Dimensions (W×H×D): 650 X 450 X 184mm(With stand)

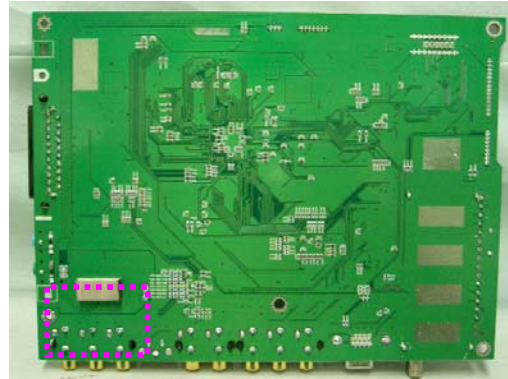
Weight (Net): 9Kg (With stand)

EMI Suppression Devices:

1. Attach aluminum foil on the mainframe for OSD and audio signal cable fixed.
And Apply a ferrite core to the audio, video and OSD board signal cable.



2. Attach a gasket on the main board.



4.1 Description of Tests(Conducted & Radiated)

4.2 Powerline Conducted Emission (150kHz- 30MHz)

The power line conducted RFI measurements were performed according to CISPR 22.

The EUT was placed on a non-conducting 1.0 by 1.5 meter table which is 0.8 meters in height and 0.40 meters away from the vertical wall of the shielded enclosure. Power to the EUT is provided through a Rohde & Schwarz 50 Ω / 50 uH Line Impedance Stabilization Network (LISN) and the support equipment through a separate Solar 50 Ω / 50 uH Line- Conducted Test Facility LISN. Sufficient time for the EUT, support equipment, and test equipment were allowed in order for them to warm up to their normal operating condition. The RF output of the LISN was connected to the spectrum analyzer to determine the frequency producing the maximum EME. The spectrum was scanned from 150kHz to 30 MHz. Each maximum EME was remeasured using an EMI receiver. The detector function of the receiver was set to CISPR quasi- peak and average mode with the bandwidth set to 9 kHz. Each emission was maximized consistent with the typical applications by varying the configuration of the test sample. Interface cables were connected to the available interface ports of the test unit. The effect of varying the position of cables was investigated to find the configuration that produces maximum Diagram emission. Excess cable lengths were bundled at the centre with 30- 40cm. in length. The worst-case configuration is noted in the test report and the photographs are attached. Each EME reported was calibrated using the Rohde & Schwarz SMX signal generator and are listed on Table 1. RFI Conducted FCC Class B

RFI CONDUCTED	FCC CLASS B Limits dB(uV/m)	
	CISPR 22 Quasi-Peak	CISPR 22 Average
150kHz - 0.5MHz	66-56*	56-46*
0.5MHz - 5MHz	56	46
5MHz - 30MHz	60	50
*Limits decreases linearly with the logarithm of frequency		

Table 1. FCC CLASS B Conducted Limits

4.3 Description of Tests(Radiated)

Radiated Emissions

Preliminary measurements were made indoors at 1 meter using broadband antennas, broadband amplifier, and spectrum analyzer to determine the frequency producing the maximum EME. Appropriate precaution was taken to ensure that all EME from the EUT were maximized and investigated. The spectrum was scanned from 30 to 300 MHz using biconical antenna, 300 to 1000 MHz using log- periodic antenna, and above 1 GHz using linearly polarized horn antennas. Final measurements were made outdoors at 10-meter test range using Dipole antennas and EMI receiver. For frequencies above 1 GHz, horn antennas were used. Sufficient time for the EUT, support equipment, and test equipment were allowed in order for them to warm up to their normal operating condition. The EMI receiver detector function was set to CISPR quasi-peak mode and the bandwidth of the receiver was set to 120 kHz. The EUT, support equipment, and interconnecting cables were arranged to the configuration that produces the maximum EME emission found during preliminary scan. The turntable containing the system was rotated; the antenna height was varied 1 to 4 meters and stopped at the azimuth or height producing the maximum emission. Horizontal and vertical antenna polarizations were checked. Each emission was maximized by: varying the mode of operation or resolution; clock or data exchange speed; scrolling H pattern to the EUT and/ or support equipment, and powering the monitor the computer aux AC outlet, if applicable; and changing the polarity of the antenna, whichever determined the worst-case emission.

ITE Radiated Limits			
Frequency (MHz)	FCC Limit @ 3m. Quasi-Peak dB[μV/m]	FCC Limit @ 10m.* Quasi – Peak dB [μV/m]	CISPR Limit @ 10m. Quasi-Peak dB [μV/m]
30-88	40.0	29.5	30.0
88-216	43.5	33.0	30.0
216-230	46.0	35.6	30.0
230-960	46.0	35.6	37.0
960-1000	54.0	43.5	37.0
> 1000	54.0	43.5	No Specified Limit
* Limit extrapolated 20 dB/decade			

Table 2. Radiated Class B limits @ 10-meters

5.1 Support Equipment Used

DEVICE TYPE	MANUFACTURER	MODEL NUMBER	FCC ID / DoC	CONNECTED TO
MONITOR (EUT)	HYUNDAI IMAGEQUEST CO., LTD.	HQL200NR	PJILT20A0000	P.C
P.C	H.P	HP Pavilion 8921	DoC	N/A
KEY BOARD	H.P	5181	DoC	P.C
MOUSE	MICROSOFT	Intellimouse	DoC	P.C
SERIAL MOUSE	LOGITECH	M-M28	DoC	P.C
PRINTER	H/P	C4569A	DoC	P.C
HEADSET	T-SOUND	CAS08	DoC	EUT

5.2 Cable Description

	Power Cord Shielded (Y/N)	I/O Cable Shielded (Y/N)	Length (M)
MONITOR(EUT)	N	Y	1.8(P), 1.8(D)
PC(HOST)	N	N/A	1.8(P)
KEY BOARD	N/A	Y	1.8(D)
MOUSE	N/A	Y	1.8(D)
PRINTER	N	Y	1.8(P),1.8(D)
SERIAL MOUSE	N/A	Y	1.5(D)
COMPOSITE VIDEO	N/A	Y	1.5(D)
COMPOSITE AUDIO L	N/A	Y	1.5(D)
COMPOSITE AUDIO R	N/A	Y	1.5(D)
COMPONENT VIDEO	N/A	Y	1.5(D)
COMPONENT AUDIO L	N/A	Y	1.5(D)
COMPONENT AUDIO R	N/A	Y	1.5(D)
AUDIO INPUT	N/A	Y	1.5(D)
HEADPHONE	N/A	Y	1.8(D)
S-VIDEO	N/A	Y	1.5(D)
AC INPUT	N	N/A	1.8(P)
ANTENNA INPUT	N/A	Y	3.0(D)

The marked "(D)" means the Data Cable and "(P)" means the Power Cable.

5.3 Noise Suppression Parts on Cable. (I/O CABLE)

	Ferrite Bead (Y/N)	Location	Metal Hood (Y/N)	Location
MONITOR(EUT)	Y	BOTH END	Y	BOTH END
KEY BOARD	N	N/A	Y	P.C END
MOUSE	Y	P.C END	Y	P.C END
PRINTER	N	N/A	Y	BOTH END
SERIAL MOUSE	N	N/A	Y	P.C END
COMPOSITE VIDEO	N	N/A	Y	BOTH END
COMPOSITE AUDIO L	N	N/A	Y	BOTH END
COMPOSITE AUDIO R	N	N/A	Y	BOTH END
COMPONENT VIDEO	N	N/A	Y	BOTH END
COMPONENT AUDIO L	N	N/A	Y	BOTH END
COMPONENT AUDIO R	N	N/A	Y	BOTH END
AUDIO INPUT	Y	BOTH END	N	N/A
HEADPHONE	N	N/A	N	N/A
S-VIDEO	N	N/A	Y	BOTH END
AC INPUT	N	N/A	N	N/A
ANTENNA INPUT	N	N/A	Y	BOTH END

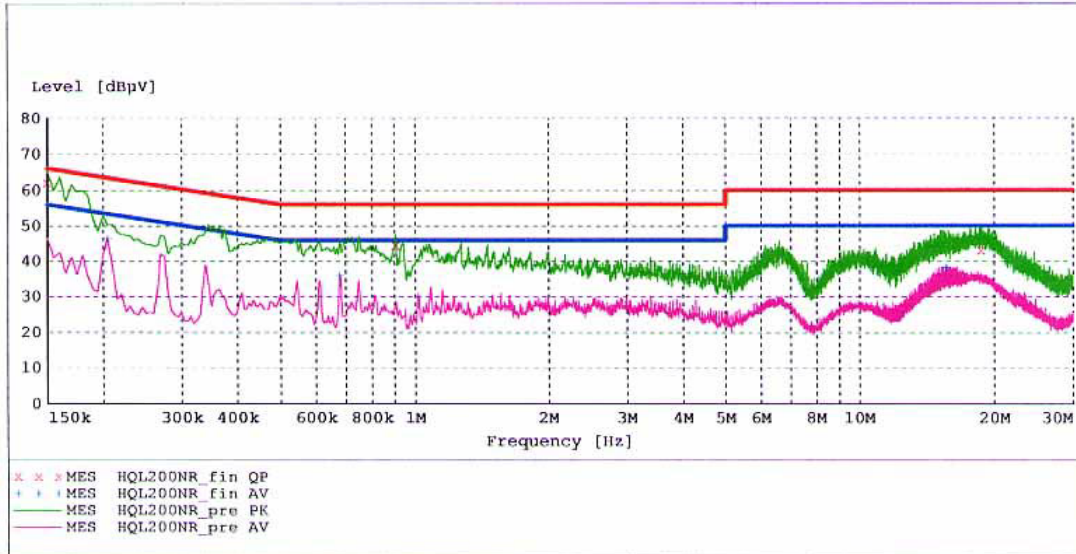
6.1 LINE-CONDUCTED TEST DATA

HCT
EMC TESTING Laboratory

EUT: HQL200NR
 Manufacturer: HYUNDAI IMAGEQUEST
 Operating Condition: 1024 X 768 75Hz
 Test Site: SHIELD ROOM
 Operator: KS-KIM
 Test Specification: CISPR 22 CLASS B
 Comment: H
 Start of Test: 6/24/04 / 1:28:04AM

SCAN TABLE: "CISPR 22 Voltage"

Short Description:			CISPR 22 Voltage				Transducer
Start Frequency	Stop Frequency	Step Width	Detector	Meas. Time	IF Bandw.		
150.0 kHz	500.0 kHz	5.0 kHz	MaxPeak	10.0 ms	9 kHz	None	
			Average				
500.0 kHz	5.0 MHz	5.0 kHz	MaxPeak	10.0 ms	9 kHz	None	
			Average				



MEASUREMENT RESULT: "HQL200NR_fin QP"

6/24/04 1:30AM

Frequency MHz	Level dBµV	Transd dB	Limit dBµV	Margin dB	Line	PE
0.150000	62.20	10.1	66	3.8	1	---
0.910000	44.50	10.1	56	11.5	1	---
18.740000	43.10	10.5	60	16.9	1	---

MEASUREMENT RESULT: "HQL200NR_fin AV"

6/24/04 1:30AM

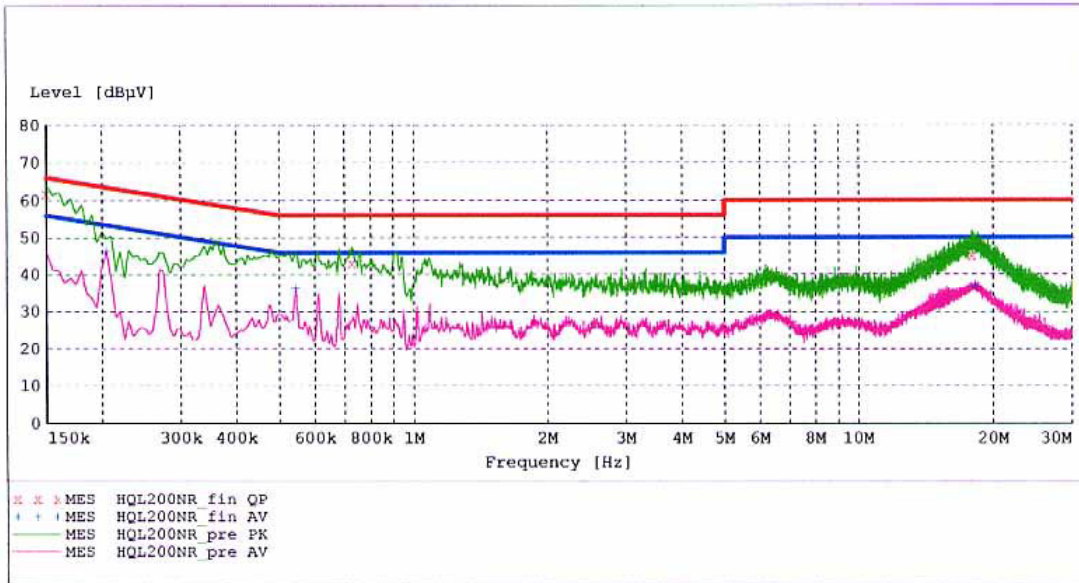
Frequency MHz	Level dBµV	Transd dB	Limit dBµV	Margin dB	Line	PE
0.205000	46.40	10.1	53	7.0	1	---
0.680000	35.90	10.2	46	10.1	1	---
15.665000	38.20	10.5	50	11.8	1	---

HCT
EMC TESTING Laboratory

EUT: HQL200NR
 Manufacturer: HYUNDAI IMAGEQUEST
 Operating Condition: 1024 X 768 75Hz
 Test Site: SHIELD ROOM
 Operator: KS-KIM
 Test Specification: CISPR 22 CLASS B
 Comment: N
 Start of Test: 6/24/04 / 1:31:22AM

SCAN TABLE: "CISPR 22 Voltage"

Short Description:			CISPR 22 Voltage			
Start Frequency	Stop Frequency	Step Width	Detector	Meas. Time	IF Bandw.	Transducer
150.0 kHz	500.0 kHz	5.0 kHz	MaxPeak	10.0 ms	9 kHz	None
			Average			
500.0 kHz	5.0 MHz	5.0 kHz	MaxPeak	10.0 ms	9 kHz	None
			Average			



MEASUREMENT RESULT: "HQL200NR_fin QP"

6/24/04 1:33AM

Frequency MHz	Level dBµV	Transd dB	Limit dBµV	Margin dB	Line	PE
0.150000	61.80	10.1	66	4.2	1	---
0.730000	43.00	10.2	56	13.0	1	---
17.990000	45.00	10.5	60	15.0	1	---

MEASUREMENT RESULT: "HQL200NR_fin AV"

6/24/04 1:33AM

Frequency MHz	Level dBµV	Transd dB	Limit dBµV	Margin dB	Line	PE
0.205000	46.40	10.1	53	7.0	1	---
0.545000	36.40	10.1	46	9.6	1	---
18.265000	36.80	10.5	50	13.2	1	---

NOTES:

- 1. All modes of operation were investigated and the worst-case emissions are reported.**
- 2. The CISPR RFI conducted limits are listed on Table 1(Page 8).**
- 3. Line H = Hot, Line N = Neutral**

** Measurements using CISPR quasi-peak mode.

7.1 RADIATED TEST DATA

Frequency MHz	Reading dBuV	Ant. Factor dB	Cable Loss dB	ANT POL (H/V)	Total dBuV/m	Limit dBuV/m	Margin dB
36.8	7.3	16.5	1.3	V	25.1	30	-4.9
63.0	15.1	7.2	1.8	V	24.1	30	-5.9
75.5	15.3	6.6	1.9	V	23.8	30	-6.2
100.7	12.0	10.0	2.3	V	24.3	30	-5.7
135.4	6.8	14.1	2.6	V	23.5	30	-6.5
202.1	4.6	16.3	3.2	H	24.1	30	-5.9
349.0	11.7	16.4	4.3	V	32.4	37	-4.6
376.0	11.1	16.7	4.5	V	32.3	37	-4.7
427.9	10.2	17.7	4.7	V	32.6	37	-4.4
553.8	7.8	20.3	5.4	V	33.5	37	-3.5
579.8	6.6	20.7	5.5	H	32.8	37	-4.2
625.1	5.3	21.9	5.7	V	32.9	37	-4.1

Radiated Measurements at 10-meters.

1024 X 768 (@60.0KHz/ 75Hz)

NOTES:

1. All modes of operation were investigated, and the worst-case emissions are reported.
2. The radiated limits are listed on Table 2 (Page 9).

** AFCL = Antenna Factor (Roberts dipole) and Cable Loss .

*** Measurements using CISPR quasi-peak mode. Above 1GHz, peak detector function mode is used using a resolution bandwidth of 1MHz and a video bandwidth of 1MHz. The peak level complies with the average limit. Peak mode is used with linearly polarized horn antenna and low-loss microwave cable.

8.1 Sample Calculations

$$\text{dB } \square = 20 \log_{10}(\square)$$

8.2 Example 1:

@ 0.150 MHz

Class B limit = 66.0 dB μ V
Reading = 62.2 dB μ V (calibrated level)

Margin = 62.2 – 66.0 = -3.8

= 3.8 dB below limit

8.3 Example 2:

@ 553.8 MHz

Class B limit = 37 dB μ V/m
Reading = 7.8 dB μ V/m (calibrated level)
Antenna Factor + Cable Loss = 25.7 dB
Total = 33.5 dB μ V/m

Margin = 33.5 – 37.0 = 3.5

= 3.5 dB below limit

9.1 Test Equipment

<u>Type</u>	<u>Manufacture</u>	<u>Model Number</u>	<u>CAL Date</u>
EMI Test Receiver	Rohde & Schwarz	ESI40	2003.11.16
EMI Test Receiver	Rohde & Schwarz	ESVS30	2003.07.15
LISN	Rohde & Schwarz	ESH2-Z5	2003.08.21
LISN	EMCO	3825/2	2004.02.24
Amplifier	Hewlett-Packard	8447E	2004.04.26
Tri log Antenna	Schwarzbeck	VULB 9160	2004.04.06
Dipole Antennas	Schwarzbeck	VHAP	2004.04.07
Dipole Antennas	Schwarzbeck	UHAP	2004.04.08
Biconical Antenna	Schwarzbeck	VHA9103	2003.07.23
Log-Periodic Antenna	Schwarzbeck	UHALP9107	2003.07.23
Antenna Position Tower	HD	MA240	N/A
Turn Table	EMCO	1060-06	N/A
Power Analyzer	Voltech	PM 3300	2004.02.15
Reference Network Impedance	Voltech	IEC 555	N/A
AC Power Source	PACIFIC	Magnetic Module	N/A
AC Power Source	PACIFIC	360AMX	2003.11.25
Controller	HD GmbH	HD 100	N/A
Slide Bar	HD GmbH	KMS 560	N/A

10.1 Test Software Used

The EUT exercise program used during radiated and conducted testing was designed to exercise the various system components in a manner similar to a typical use. The software, contained on a 3-1/2 inch disc, was inserted into drive A and is auto starting on power-up. Once loaded, the program sequentially exercises each system component in turn. The sequence used is : (1) Display test, (2) RS 232 test (3) Key board test, (4) Printer test, (5) FDD test, (6) HDD test. The complete cycle takes about 20 seconds and is repeated continuously. As the keyboard and mouse are strictly input devices, no data is transmitted to them during test. They are however, continuously scanned for data input activity. The video resolution modes setup and change program was used during the radiated and conducted emission testing.

NOTE: This is a sample of the basic program used during the test. However, during testing, a different software program may be used; whichever determines the worst-case condition. In addition, the program used also depends on the number and type of devices being tested.

Actual program used is the "H" pattern in Notepad under Windows environment. All resolution modes (1024×768, 800×600, 640×480, 720×400) were investigated and tested.

11.1 Conclusion

The data collected shows that the HYUNDAI IMAGEQUEST CO., LTD. 20-inch LCD Monitor **FCC ID: PJILT20A0000** complies with §15.107 and §15.109 of the FCC Rules.