



FCC Class II Permissive Change Request Letter

Date: January 19, 2015

To FCC:

RE: FCC Permissive II Change Request for Company: HYUNDAI IBT CORP. FCC ID: PJIL27DPJLP0

We are submitting an application for a class II permissive change to the FCC approval of the Company name: HYUNDAI IBT CORP., product description: LED MONITOR (FCC: **PJIL27DPJLP0**, Original Grant Date: July 10, 2013). The transmitter module itself has not changed. Here are the changes:

- A. Addition of Display Panel
- B. Addition of Main board
- C. Addition of SUB board

For detail , pls help to see below attachment

Sincerely,

Title: Manager
Name: Yoon Suk Lee
Address: 106, Apogongdan-gil, Apo-eup, Gimcheon-si,
Gyeongsangbuk-do, 740-862 Republic of Korea

Signature:

A handwritten signature in black ink, appearing to be "Yoon Suk Lee". The signature is stylized and written in a cursive-like font.

**Class II permissive change of modification
of presently authorized equipment**

(FCC ID: PJIL27DPJLP0)

- Addition of Display Panel

| | Display Panel Model Type | Manufacturer |
|----------------------|--------------------------|----------------------------|
| Before (Original) | LM270WQ3 | LG Display / CHINA |
| | | |
| Addition | M270DTN01 | AU Optronics Corp. / CHINA |
| | | |
| After | LM270WQ3 | LG Display / CHINA |
| | M270DTN01 | AU Optronics Corp. / CHINA |

- Addition of Main board

| | Main board Model Type | Main board P/N Type |
|----------------------|-----------------------|---------------------|
| Before (Original) | VCB1500 | VPM-0152AB |
| | | |
| Addition | VCB1500 | VPM-0152AE |
| | | |
| After | VCB1500 | VPM-0152AB |
| | VCB1500 | VPM-0152AE |

- Addition of SUB board

| | SUB board Model Type | SUB board P/N Type |
|----------------------|----------------------|--------------------|
| Before (Original) | VLD0100 | VPS-0056 AB |
| | | |
| Addition | VLD0200 | VPS-057 AC |
| | | |
| After | VLD0100 | VPS-0056 AB |
| | VLD0200 | VPS-057 AC |

Please refer to next part.

A-1. Before Display Panel Photographs

1. Model Type: LM270WQ3

- View of front



- View of rear



- View of label



A-2. Addition Display Panel Photographs

1. Model Type: M270DTN01

- View of front



- View of rear



- View of label



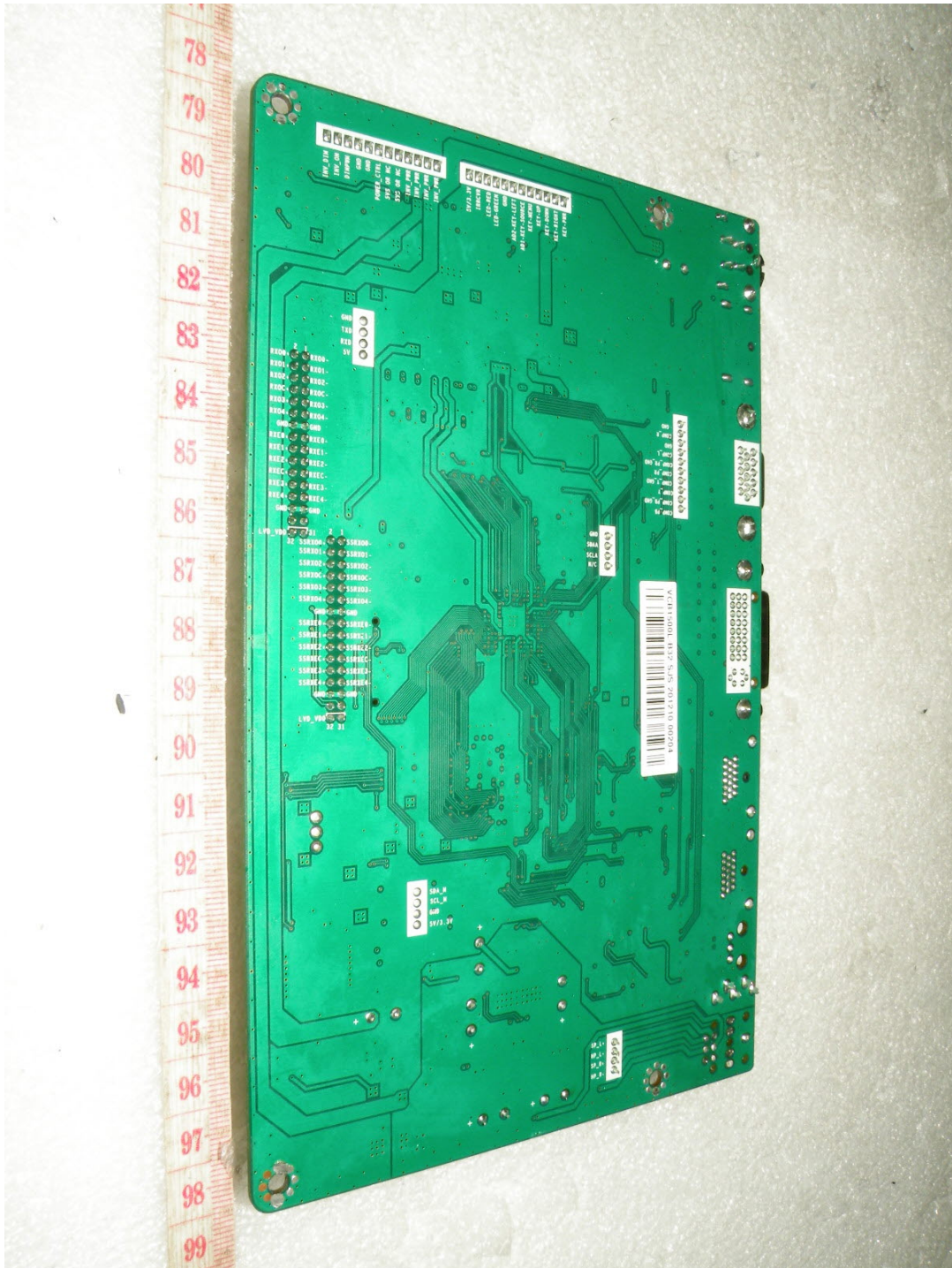
B-1. Before Main board Photographs

1. Model (P/N) Type: VCB1500 (VPM-0152AB)

- View of front



- View of rear



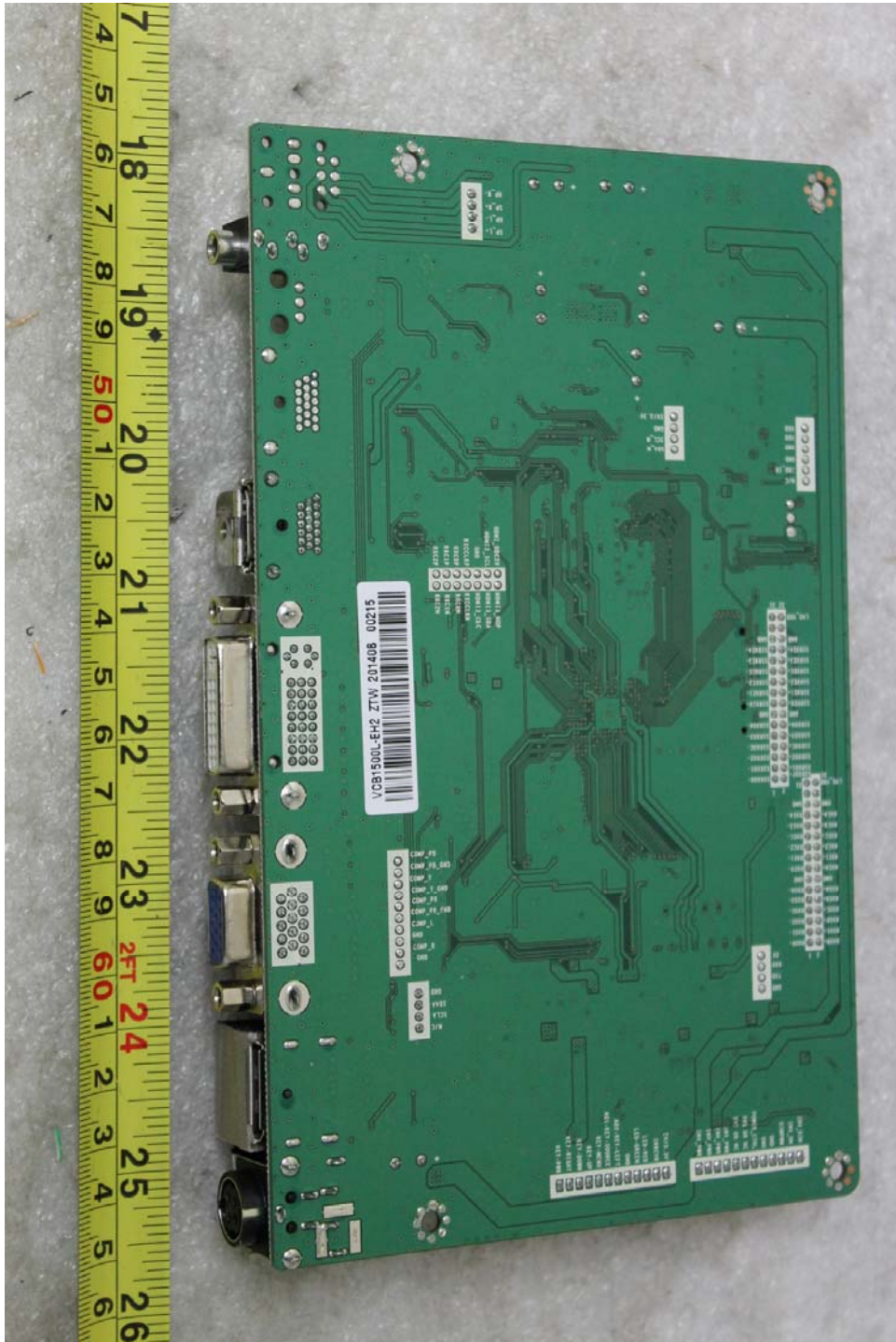
B-2. Addition Main board Photographs

1. Model (P/N) Type: VCB1500 (VPM-0152AE)

- View of front



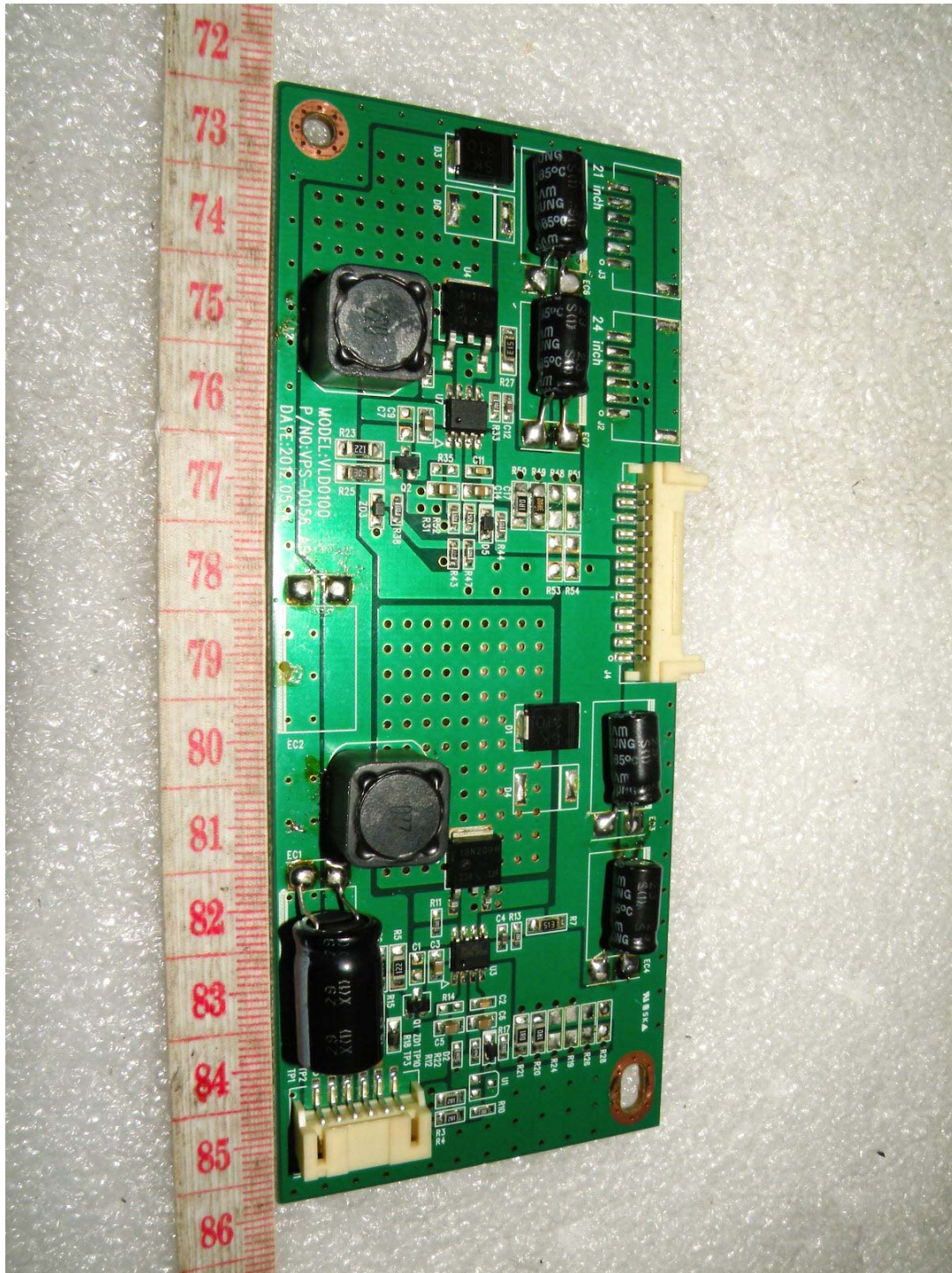
- View of rear



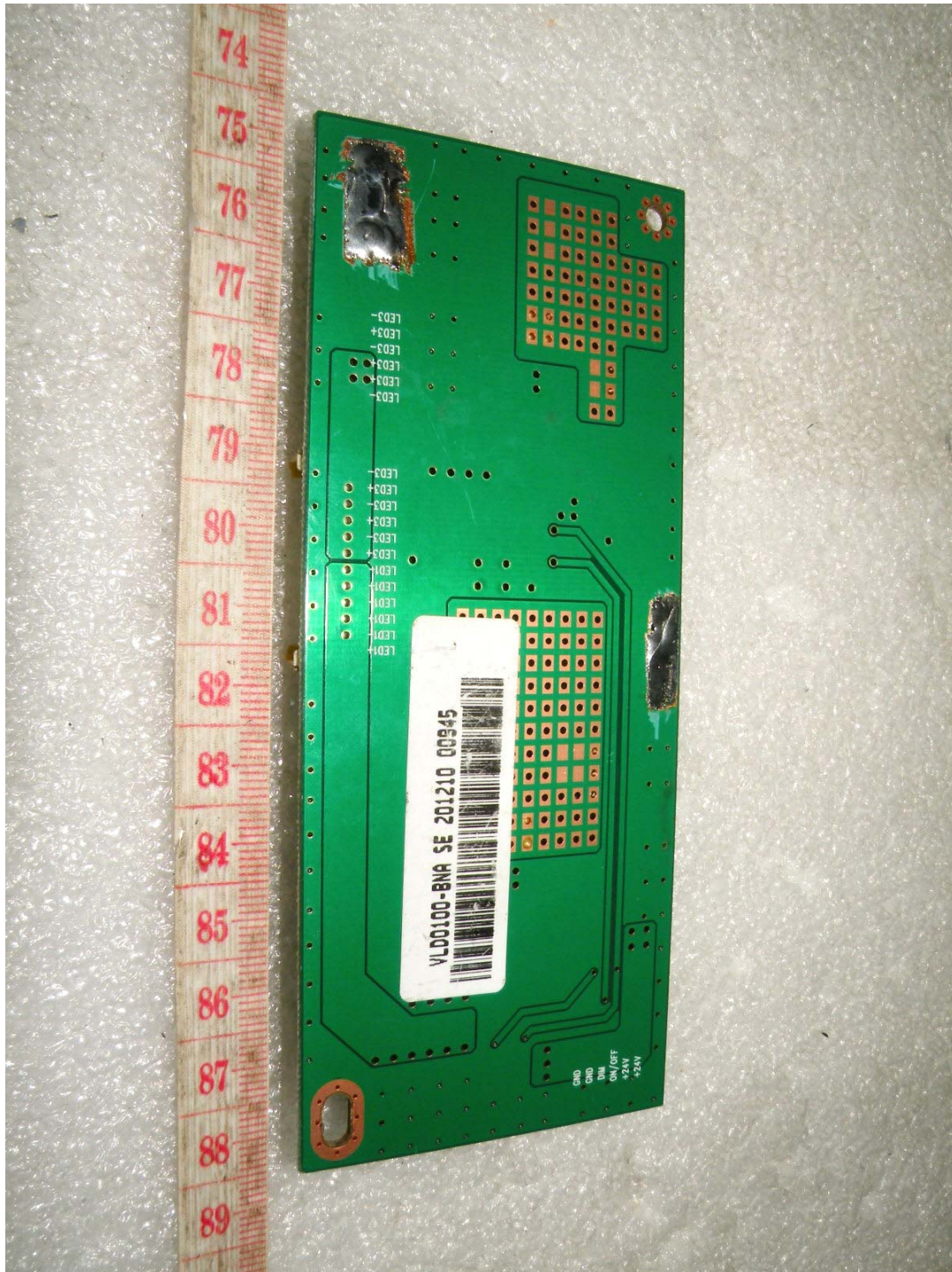
C-1. Before SUB board Photographs

1. Model (P/N) Type: VLD0100 (VPS-0056 AB)

- View of front



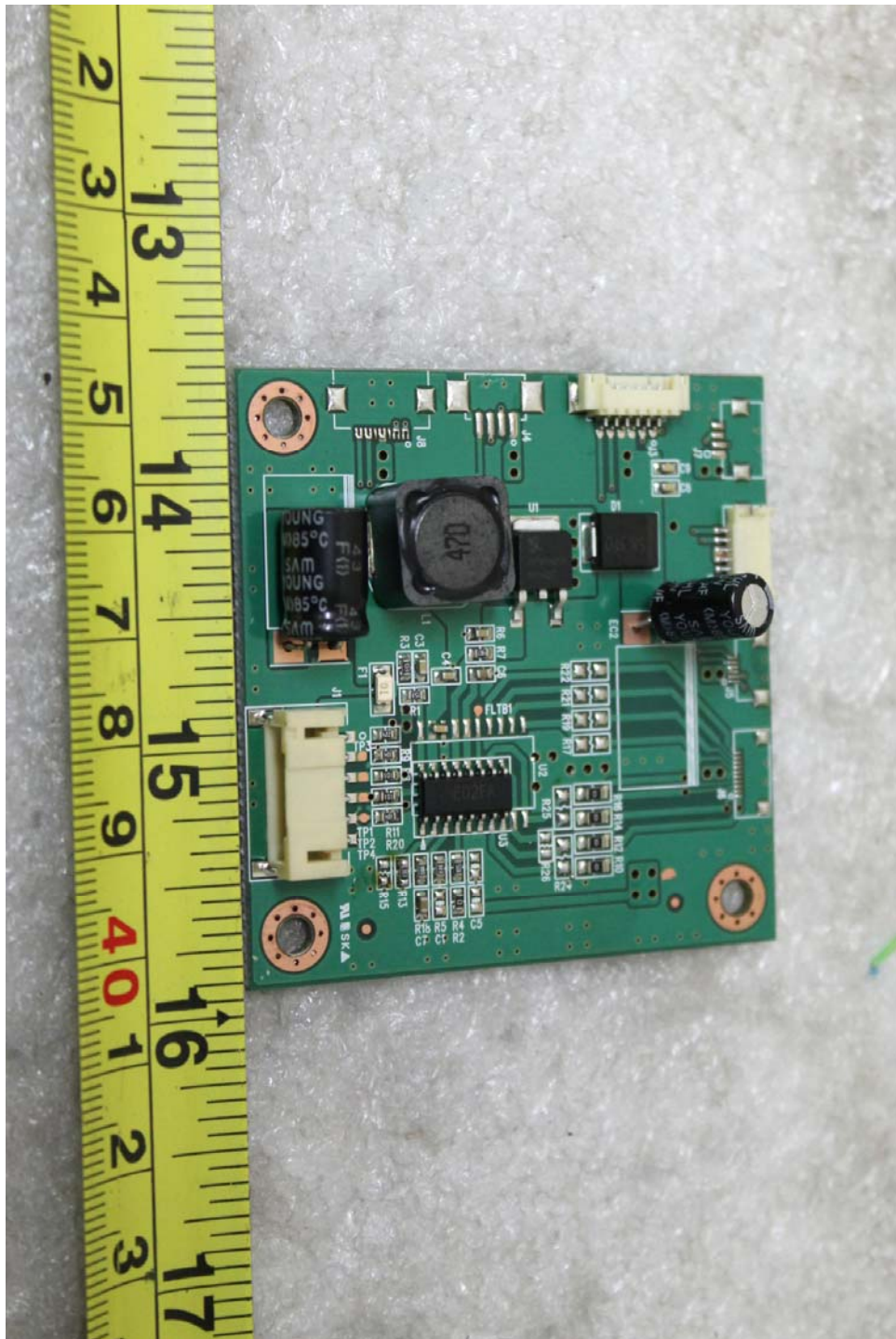
- View of rear



C-2. Addition SUB board Photographs

1. Model (P/N) Type: VLD0200 (VPS-057 AC)

- View of front



- View of rear

