

**Class II permissive change of modification
of presently authorized equipment**

(FCC ID: PJIL24DPFAL0)

- Addition of LCD PANEL

	LCD Panel Model Type	Manufacturer
Before (Original)	M240HW01	AU Optronics Corp. / CHINA
Addition	M240HTN01	AU Optronics Corp. / CHINA
After	M240HW01	AU Optronics Corp. / CHINA
	M240HTN01	AU Optronics Corp. / CHINA

- Addition of Main board

	Main board P/N Type
Before (Original)	3041001174
Addition	304100117401
After	3041001174
	304100117401

- Addition of LED board

	LED board P/N Type
Before (Original)	900-07-00017
Addition	900-07-00027
After	900-07-00017
	900-07-00027

Please refer to next part.

A. Before LCD Panel Photographs

1. Model Type: M240HW01

- View of front



- View of rear



- View of label



B. Addition LCD Panel Photographs

1. Model Type: M240HTN01

- View of front



- View of rear



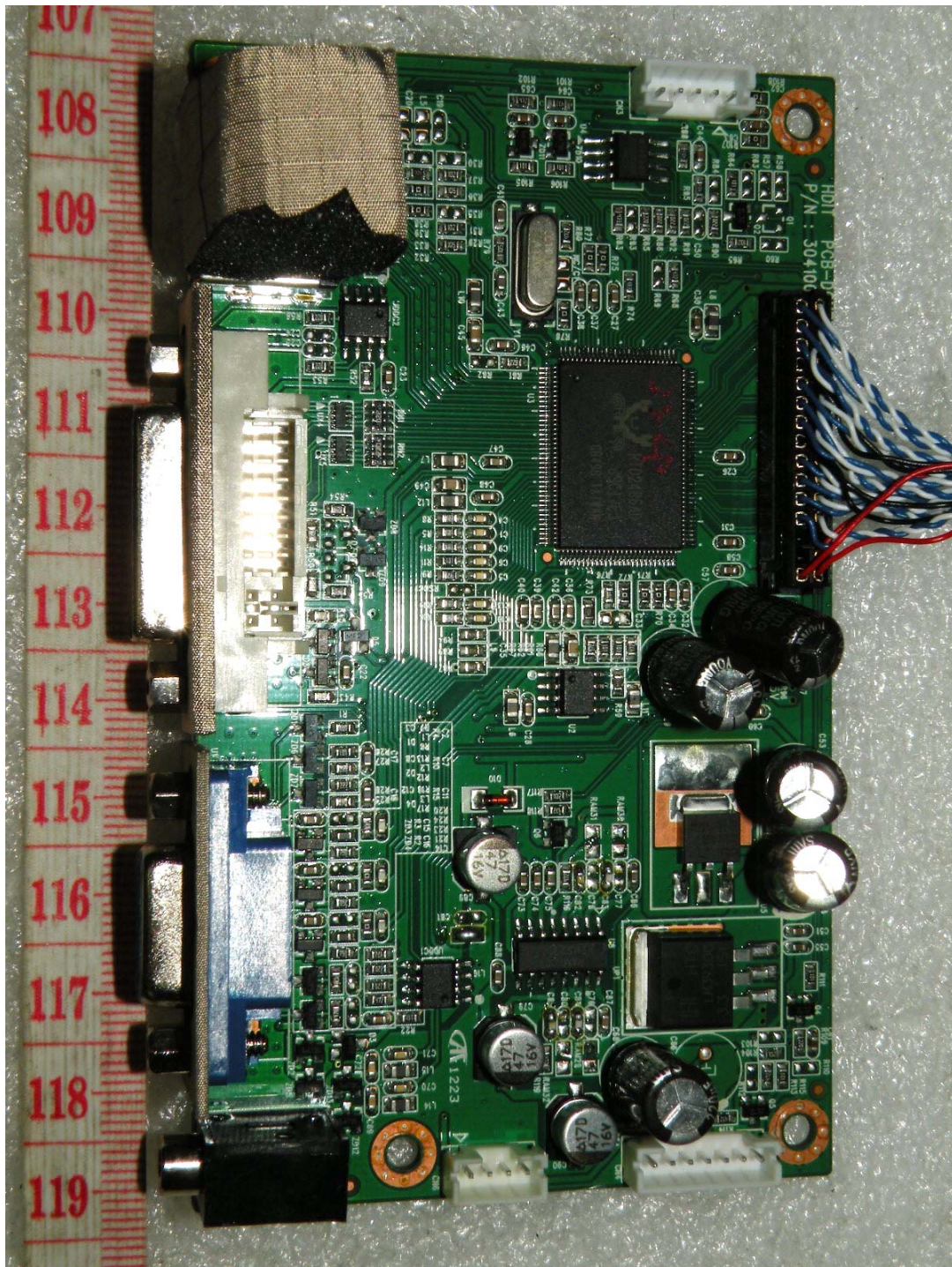
- View of label



C. Before Main board Photographs

1. P/N Type: 3041001174

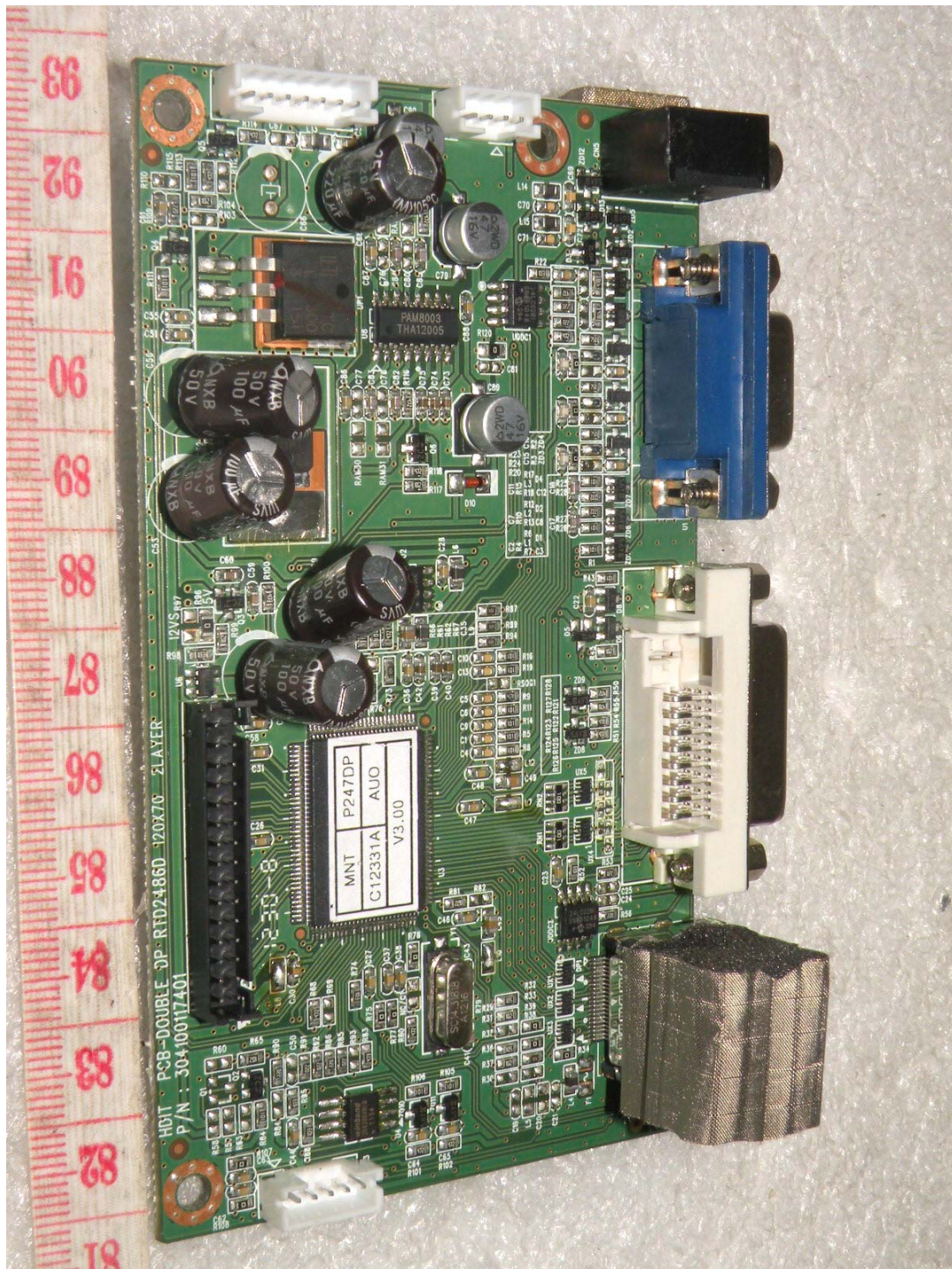
- View of front



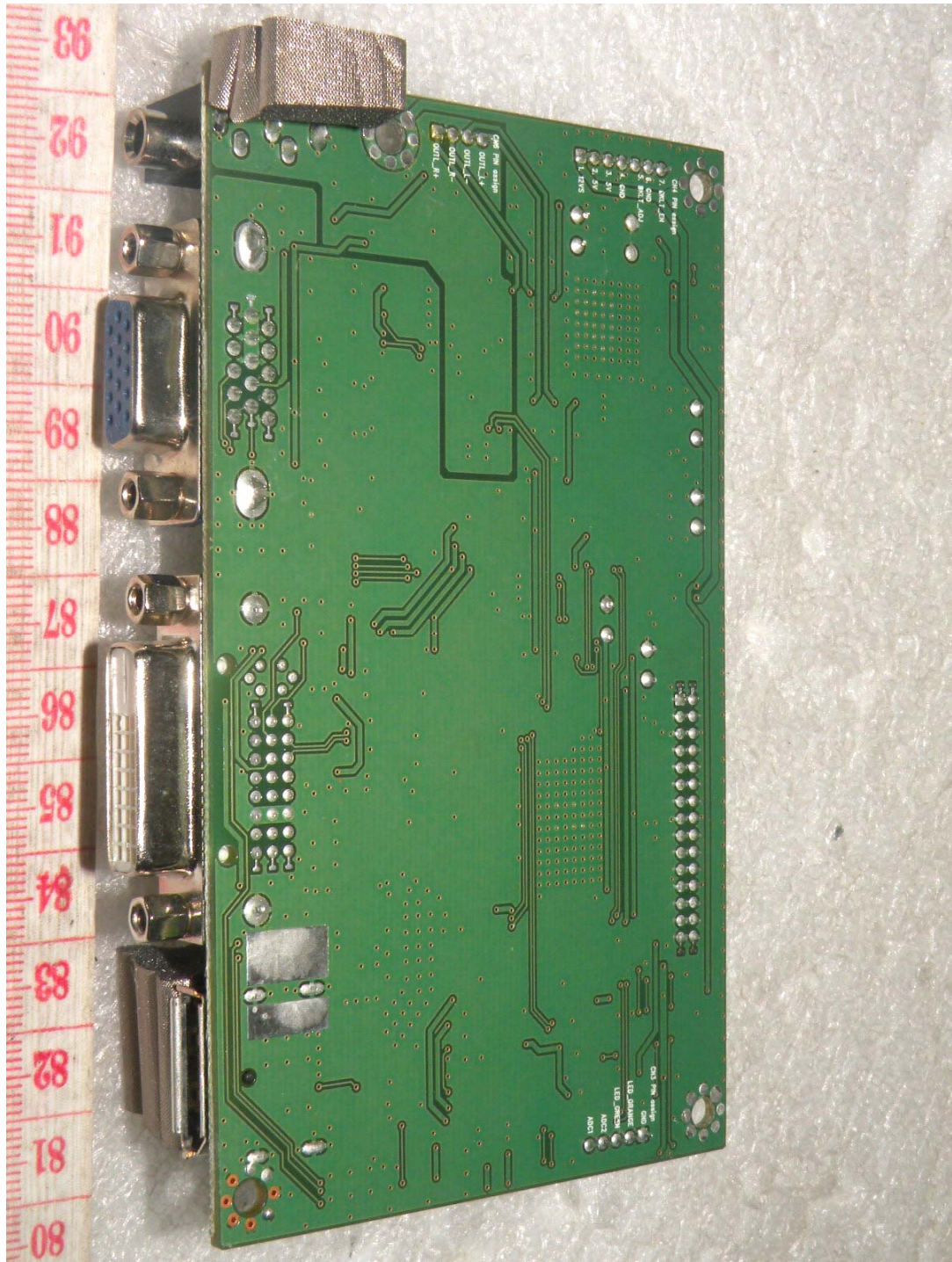
D. Addition Main board Photographs

1. P/N Type: 304100117401

- View of front



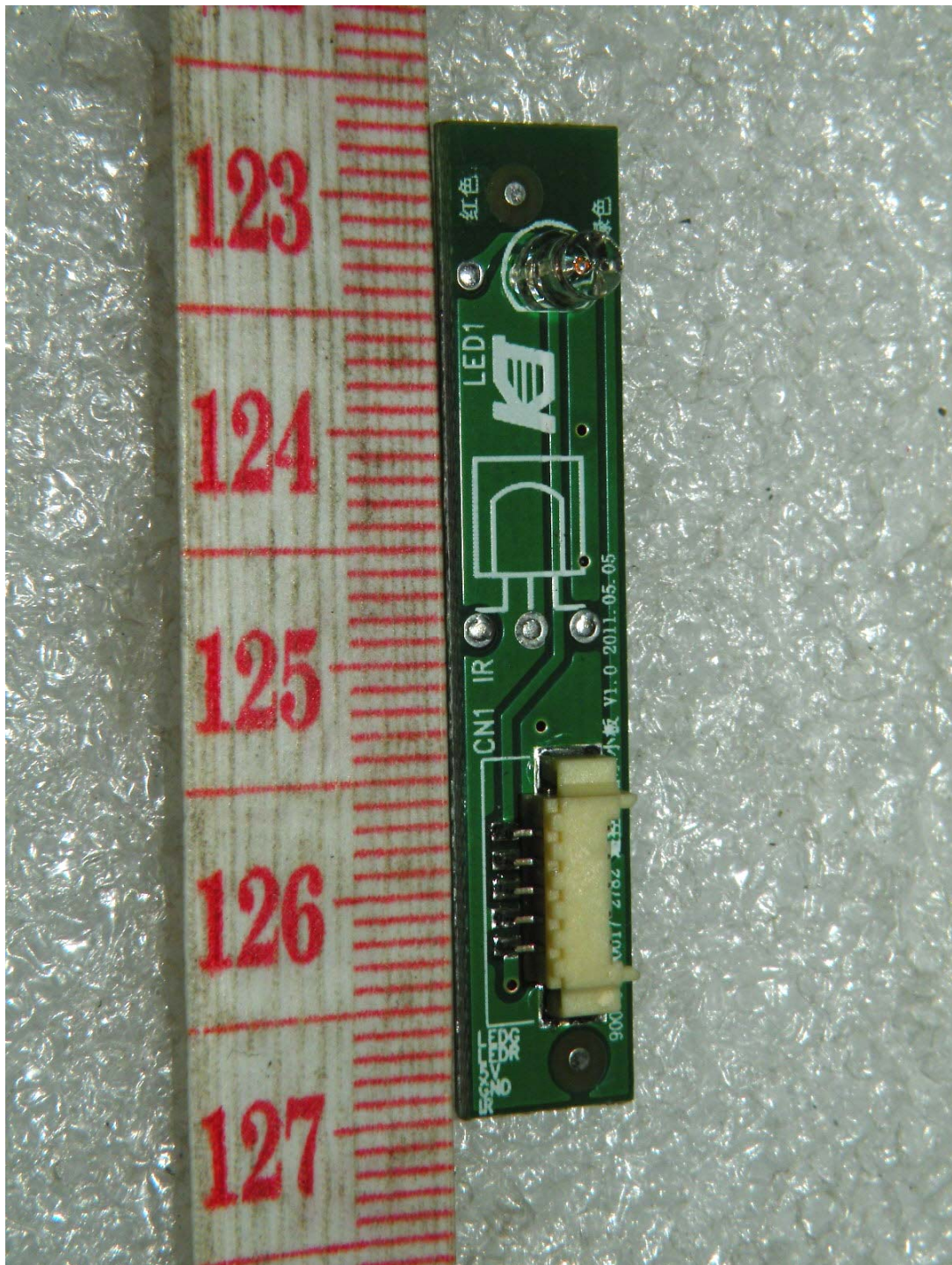
- View of rear



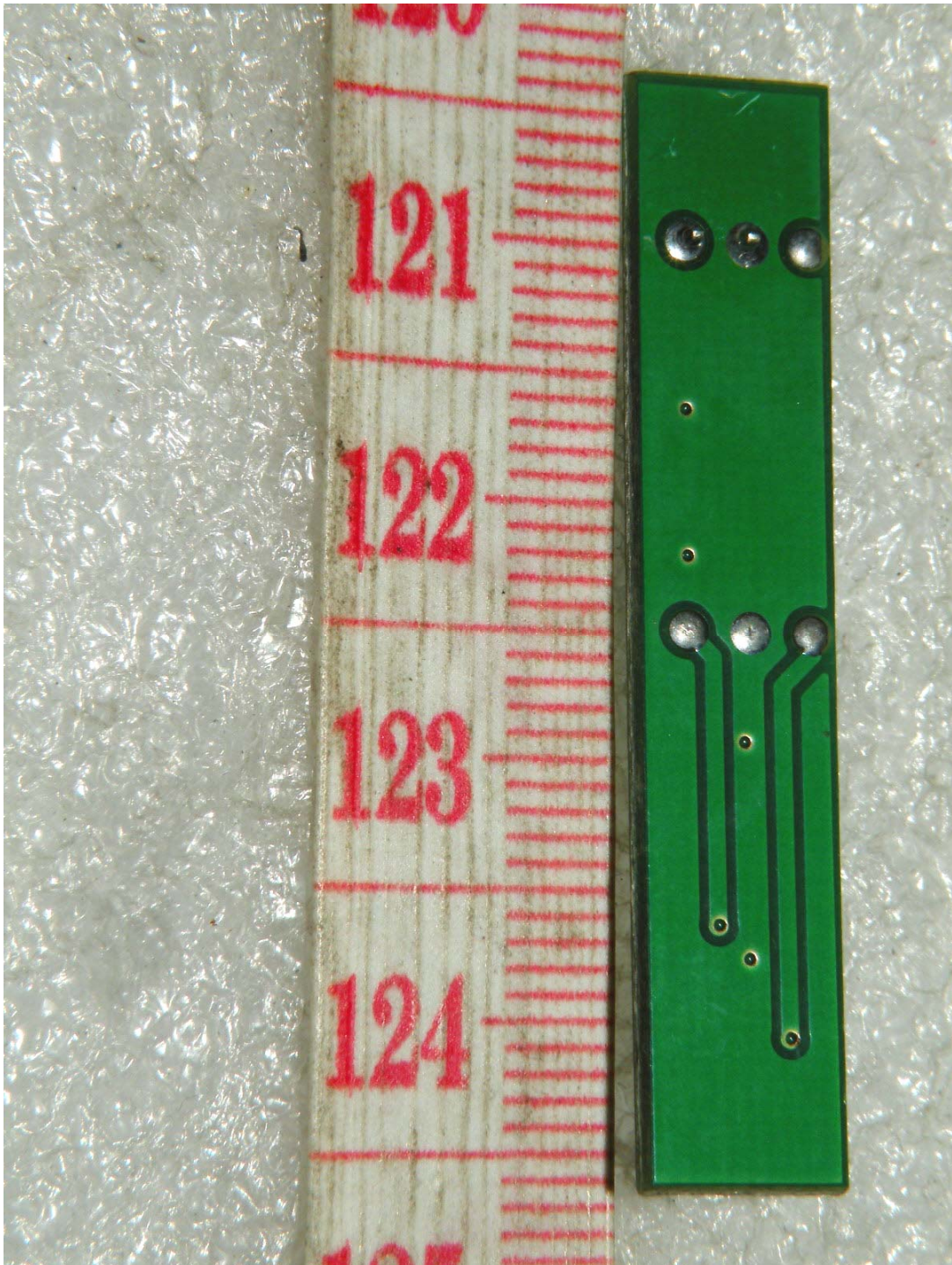
E. Before LED board Photographs

1. P/N Type: 900-07-00017

- View of front



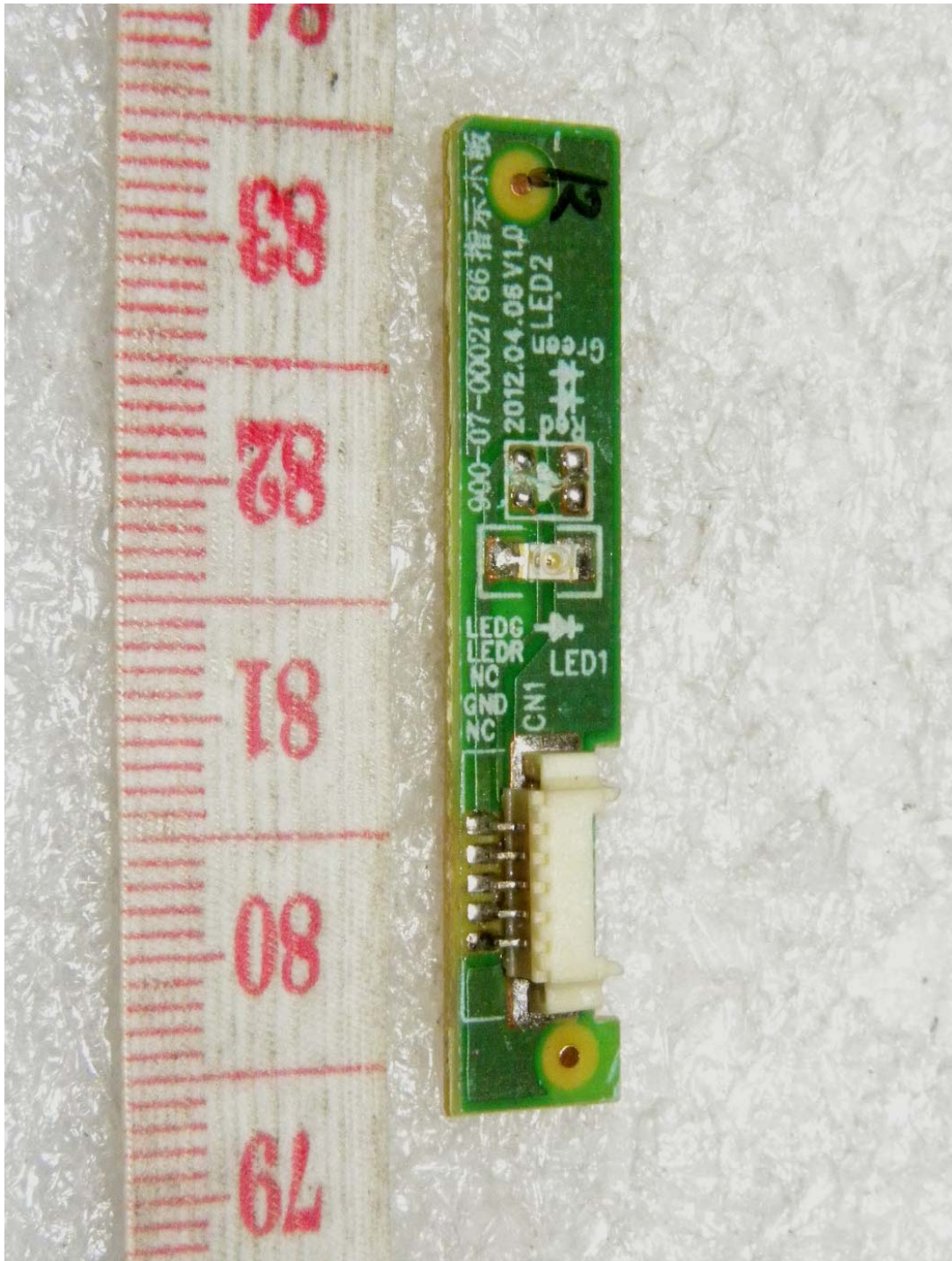
- View of rear



F. Addition LED board Photographs

1. P/N Type: 900-07-00027

- View of front



- View of rear

