

**Class II permissive change of modification
of presently authorized equipment**

(FCC ID: PJIL24C0FAL0)

- Addition of LCD PANEL

	LCD Panel Model Type	Manufacturer
Before (Original)	M240HW01	AU Optronics Corp. / CHINA
Addition	M240HTN01	AU Optronics Corp. / CHINA
After	M240HW01	AU Optronics Corp. / CHINA
	M240HTN01	AU Optronics Corp. / CHINA

- Addition of Power board

	Power board Model Type
Before (Original)	PL73503 VER:1.0
Addition	PL73503 VER:1.1
After	PL73503 VER:1.0
	PL73503 VER:1.1

- Addition of LED board

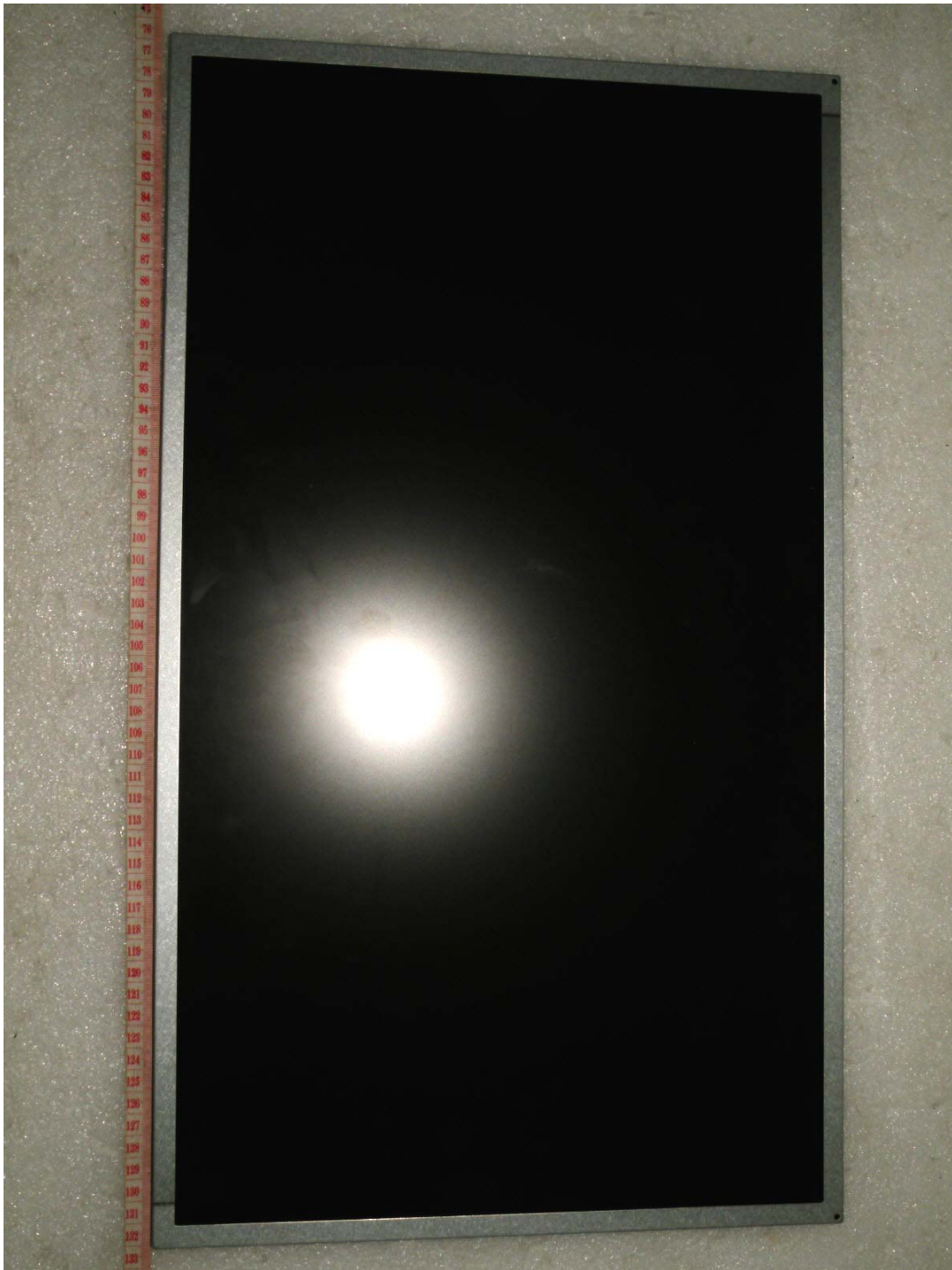
	LED board P/N Type
Before (Original)	900-07-00017
Addition	900-07-00027
After	900-07-00017
	900-07-00027

Please refer to next part.

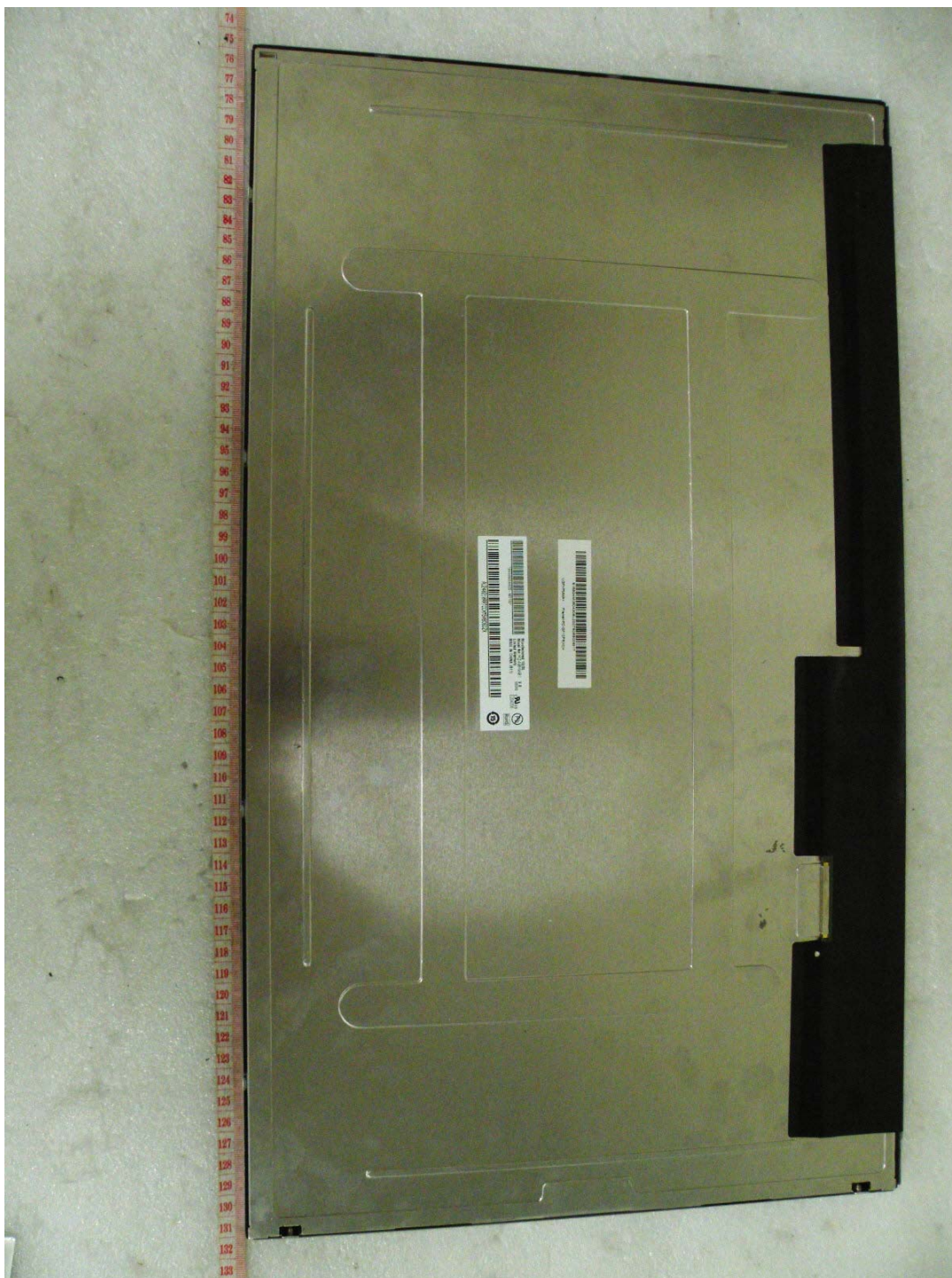
A. Before LCD Panel Photographs

1. Model Type: M240HW01

- View of front



- View of rear



- View of label



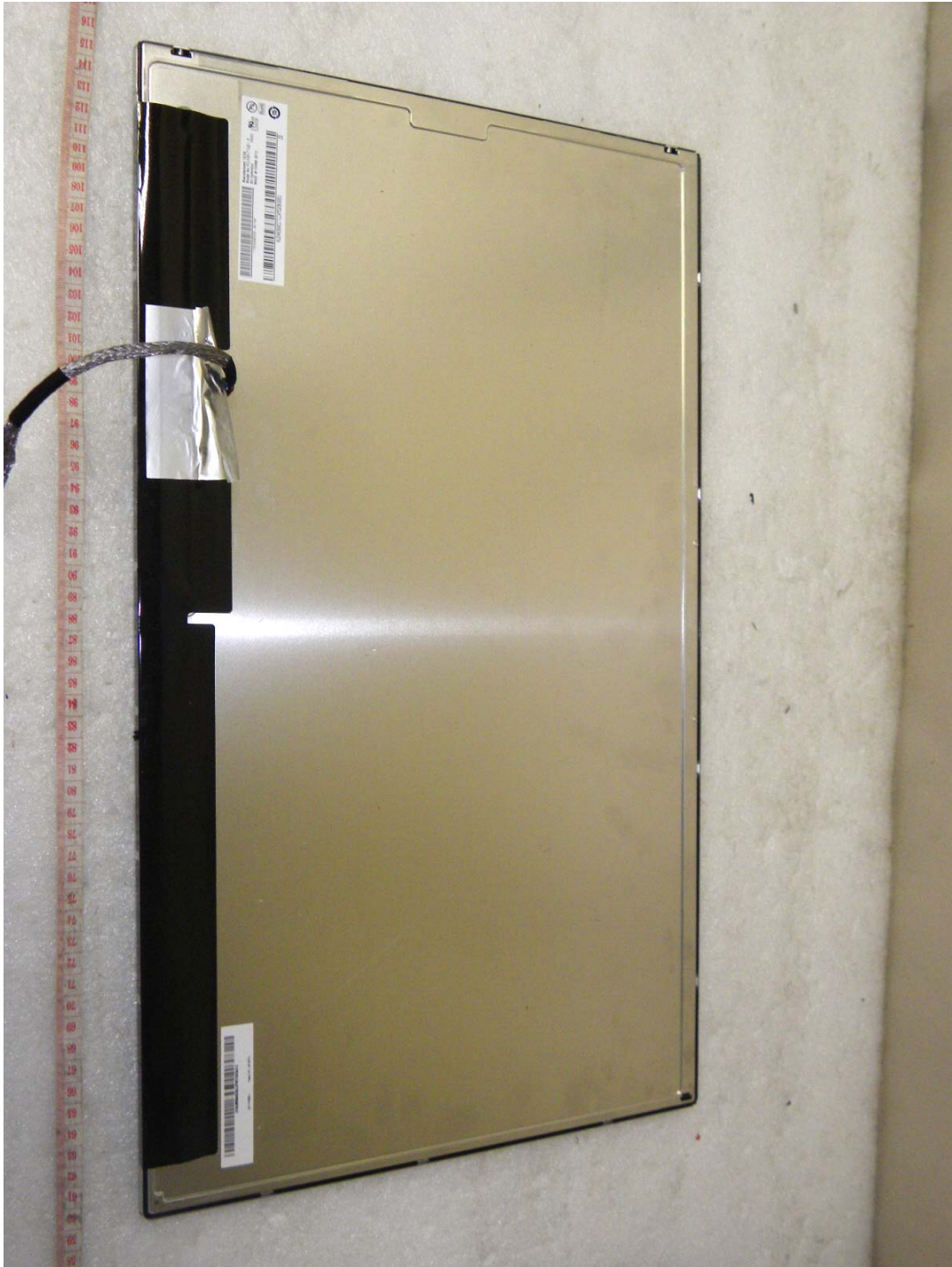
B. Addition LCD Panel Photographs

1. Model Type: M240HTN01

- View of front



- View of rear



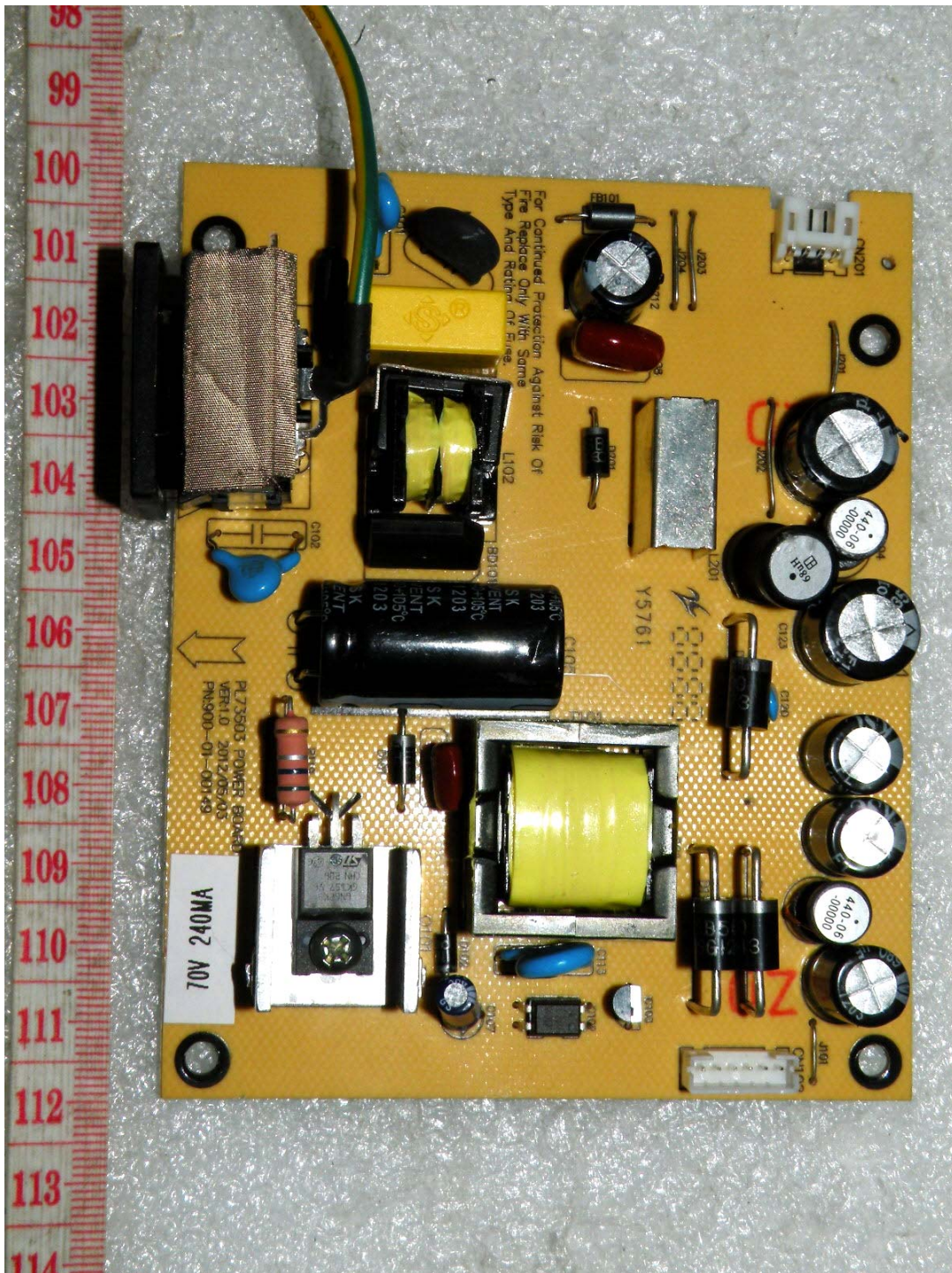
- View of label



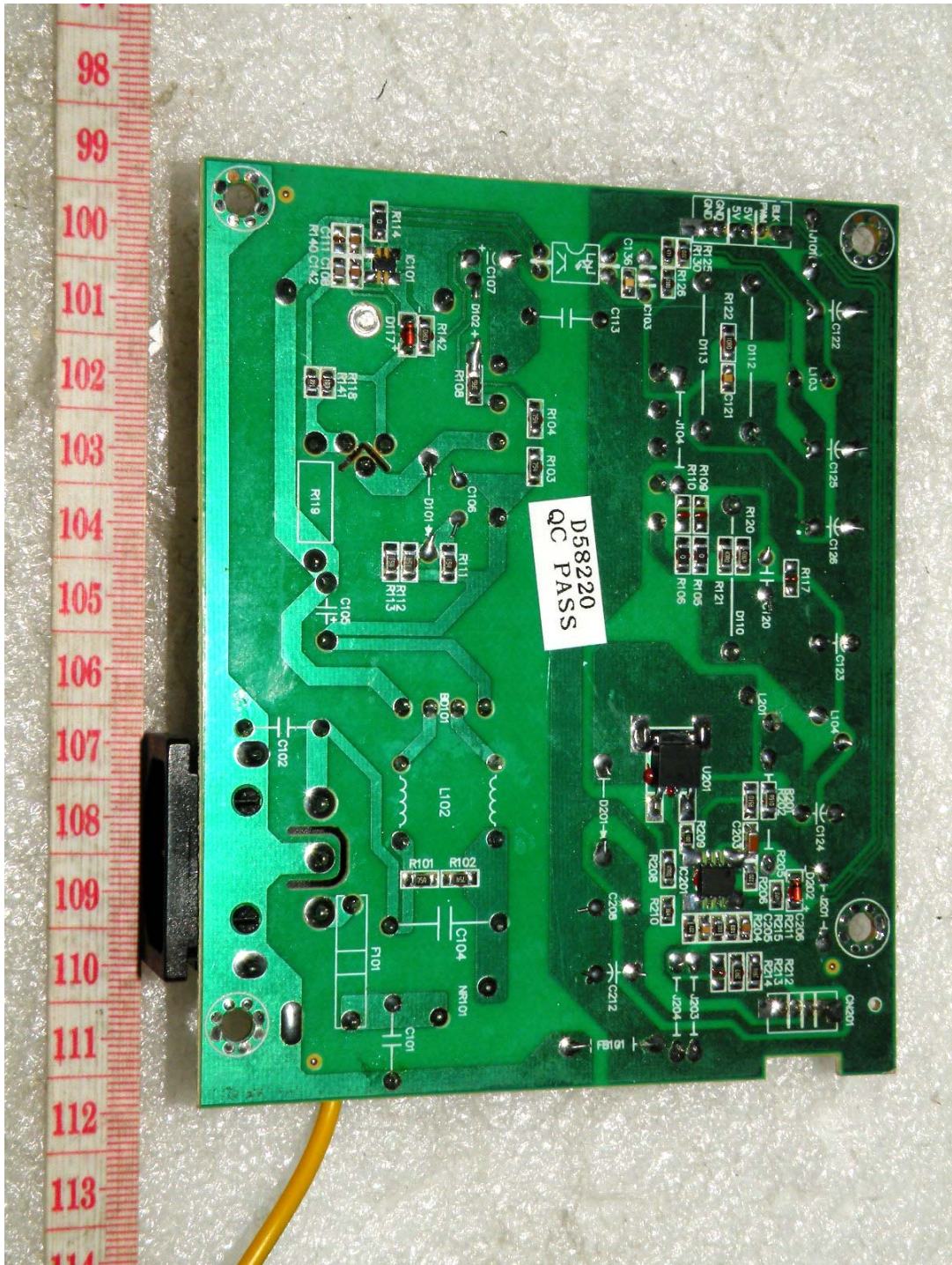
C. Before Power board Photographs

1. Model Type: PL73503 VER:1.0

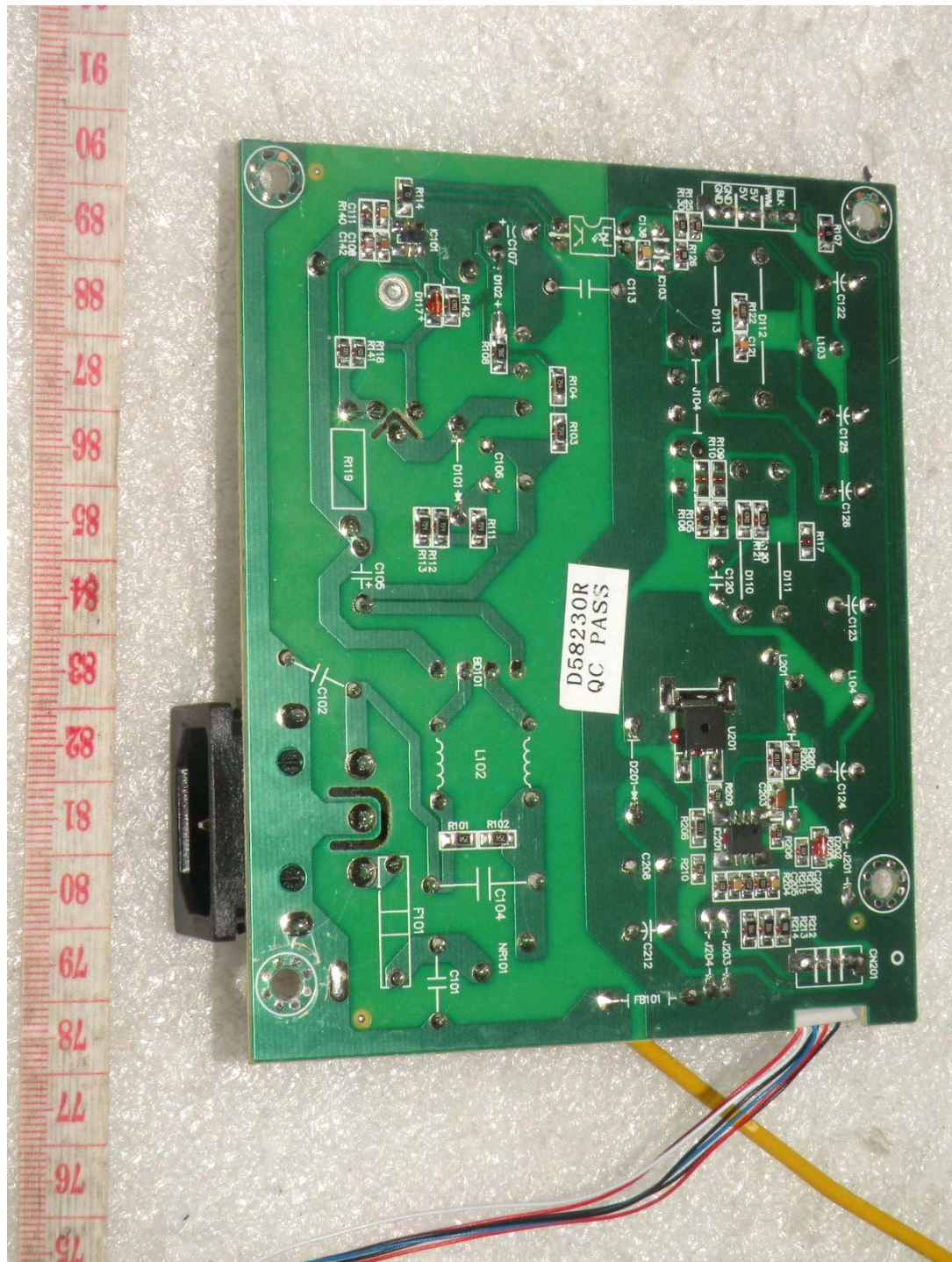
- View of front



- View of rear



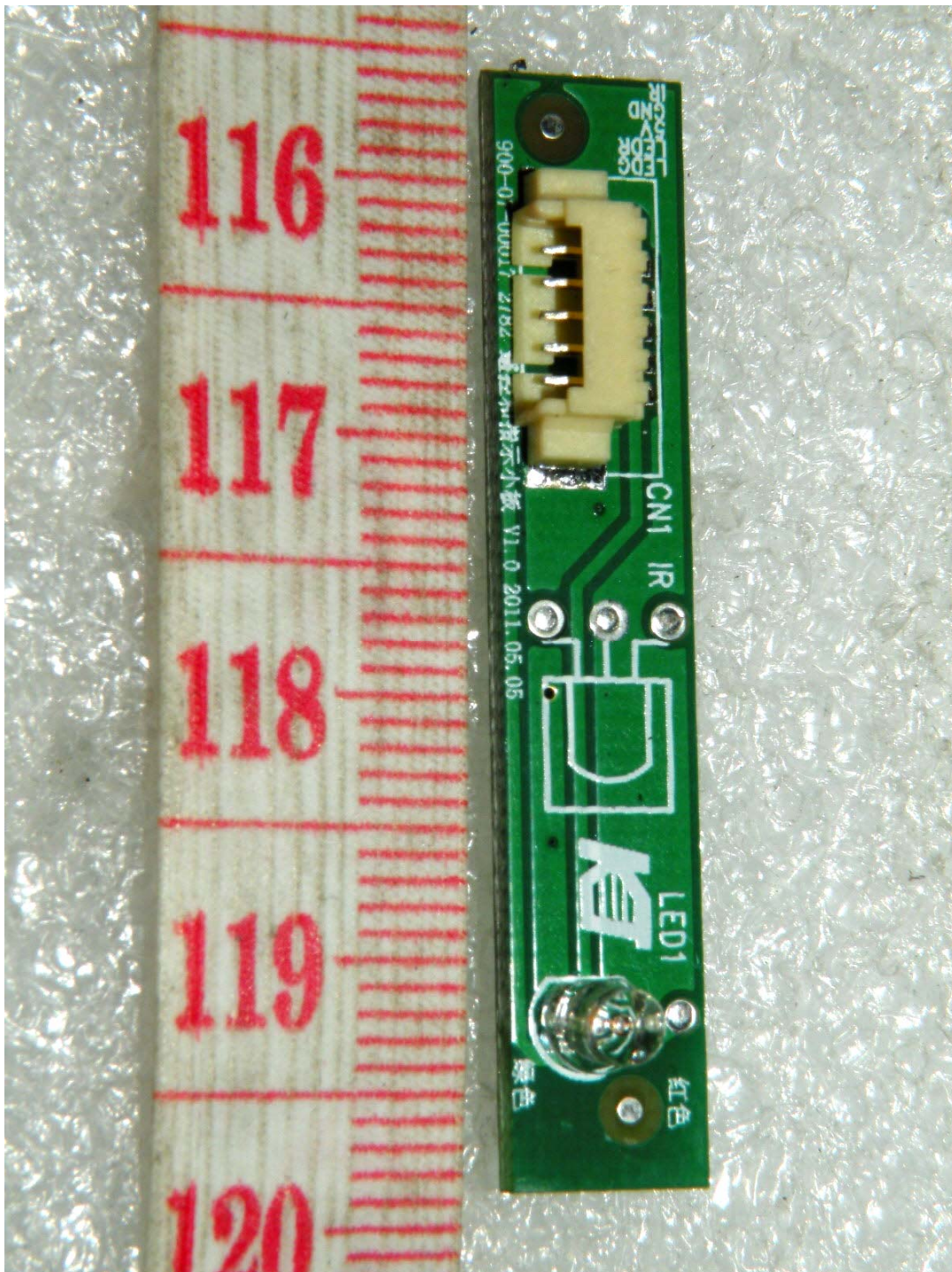
- View of rear



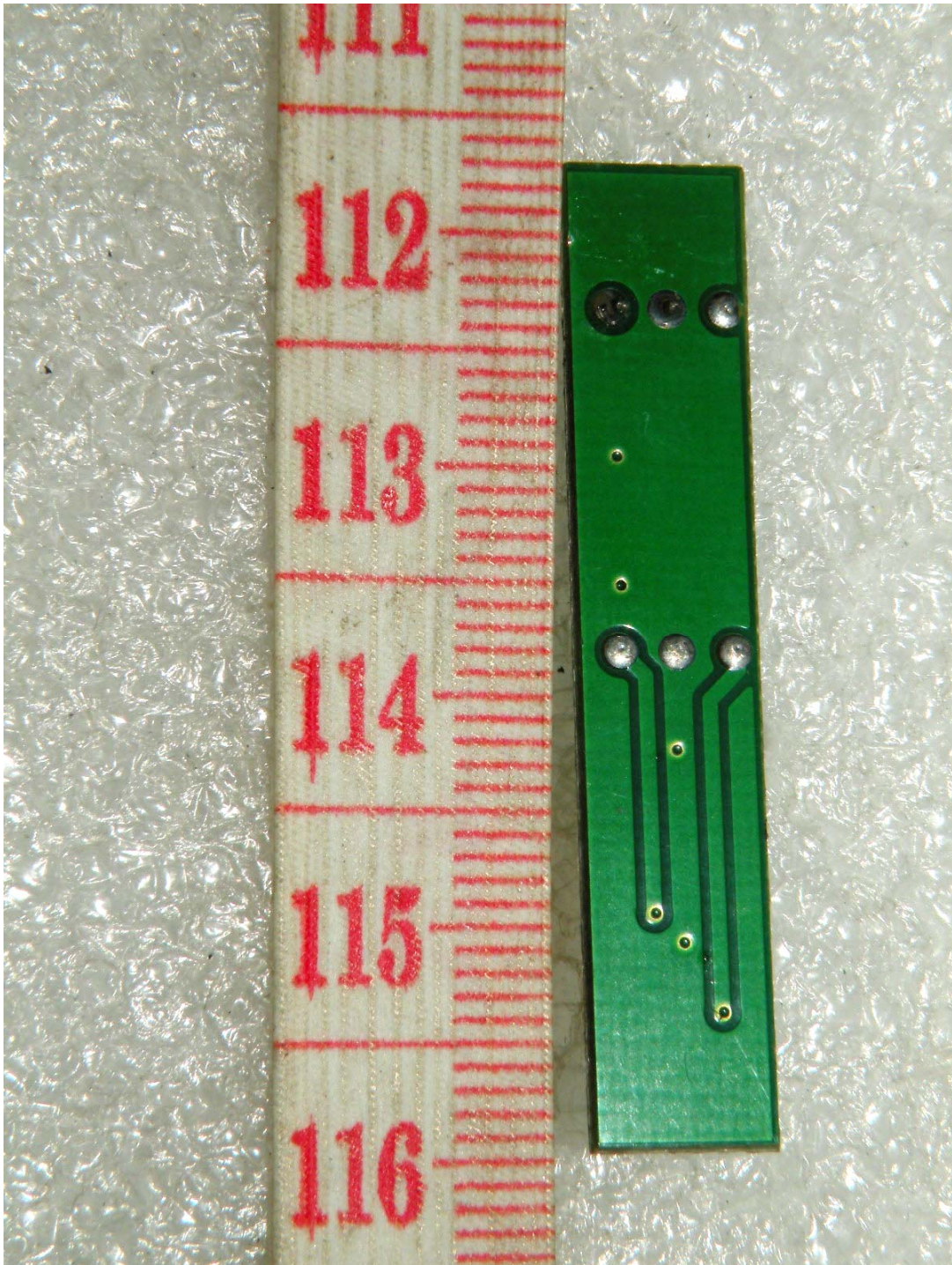
E. Before LED board Photographs

1. P/N Type: 900-07-00017

- View of front



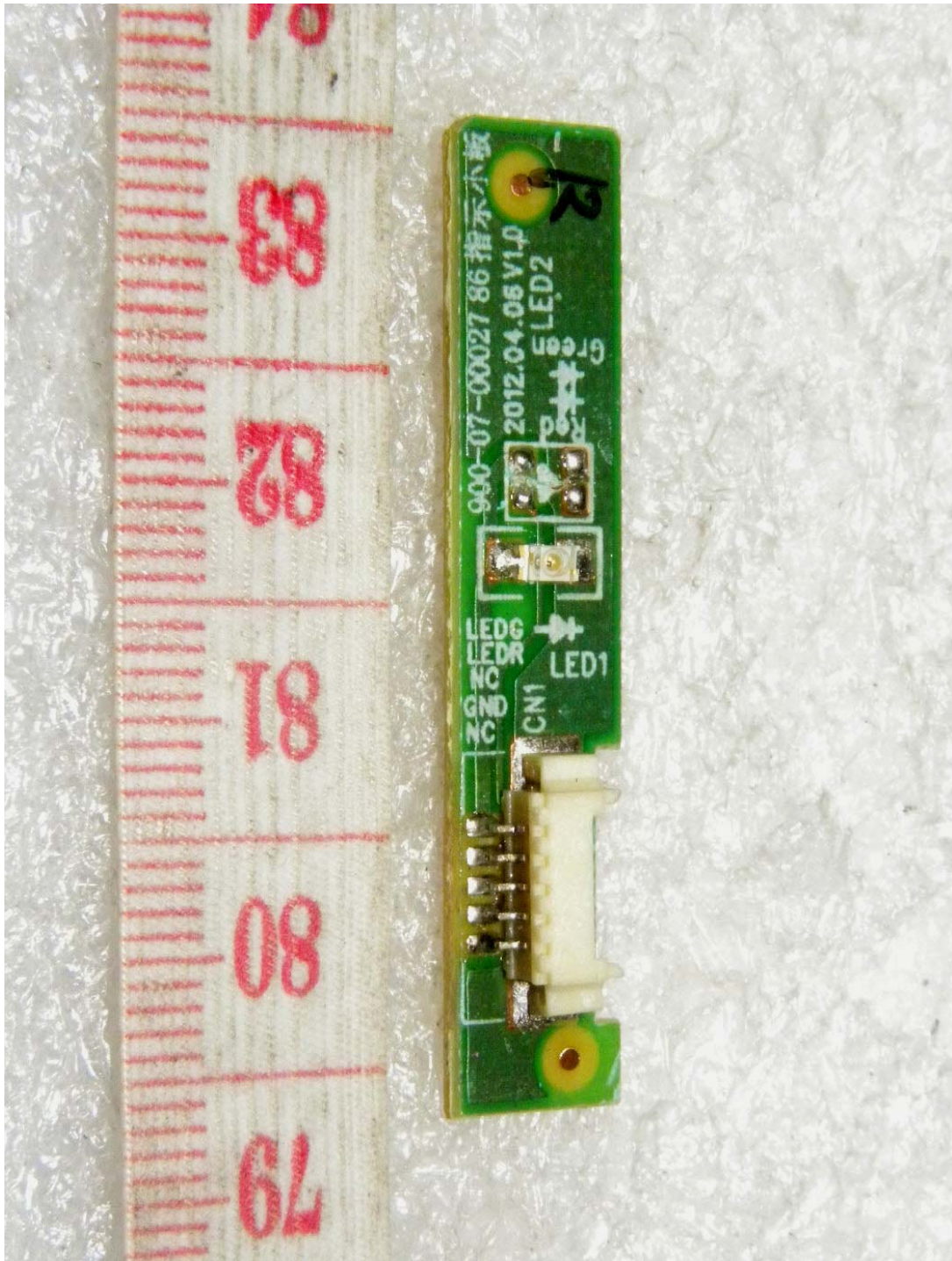
- View of rear



F. Addition LED board Photographs

1. P/N Type: 900-07-00027

- View of front



- View of rear

