

**Inside view of EUT**



**Inside view of EUT**



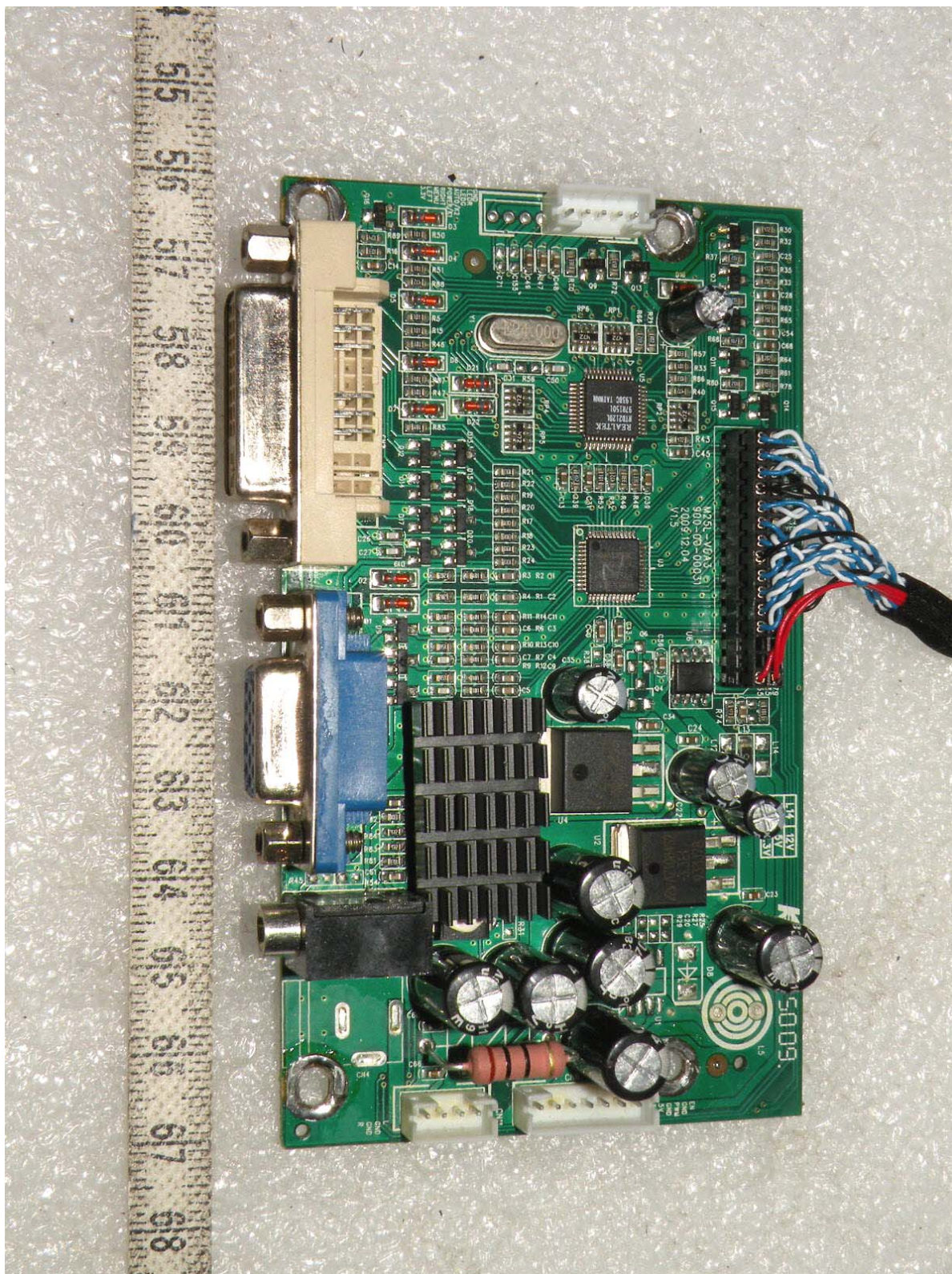


**Inside view of EUT**



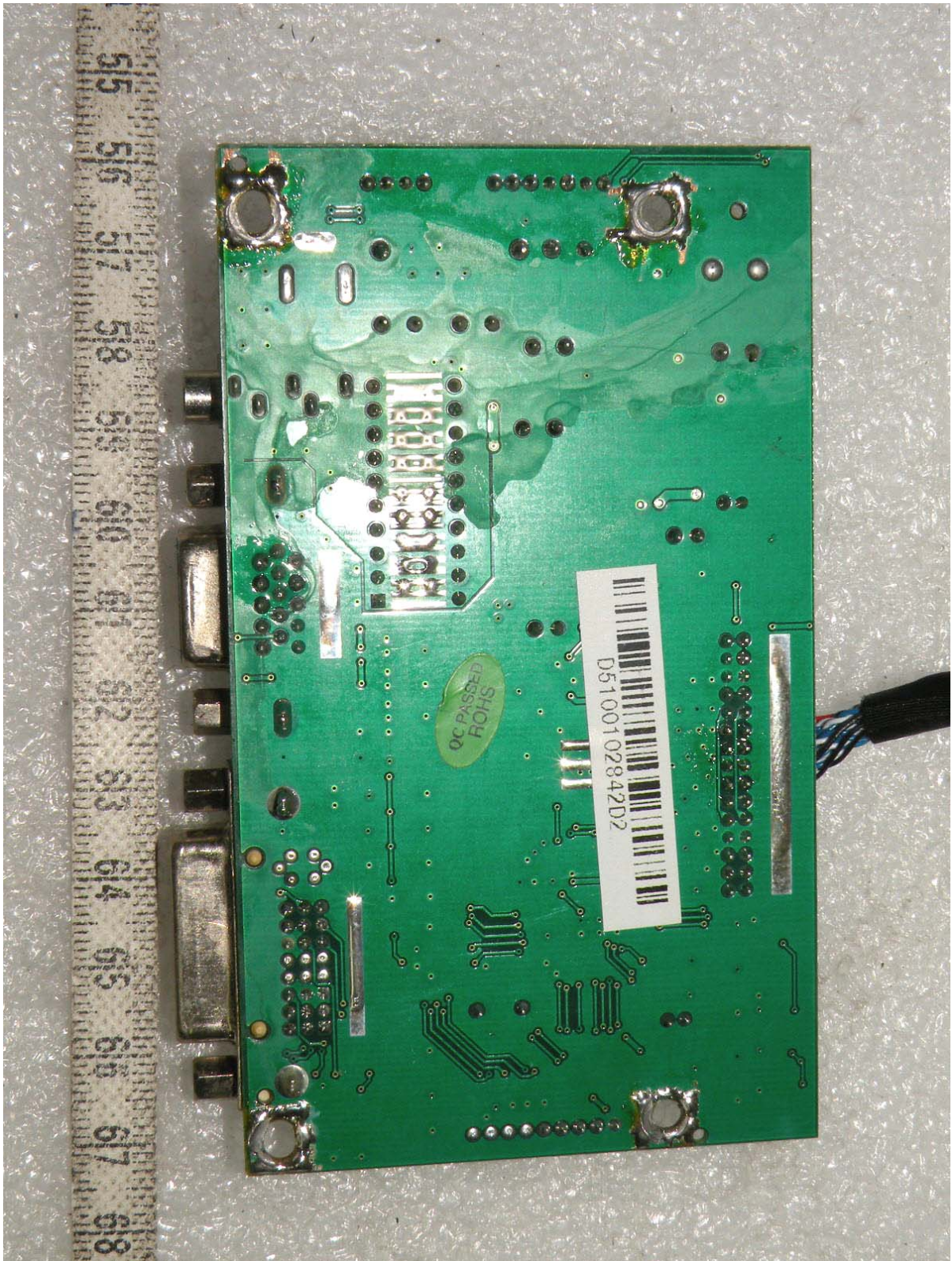


**Top side view of main board**



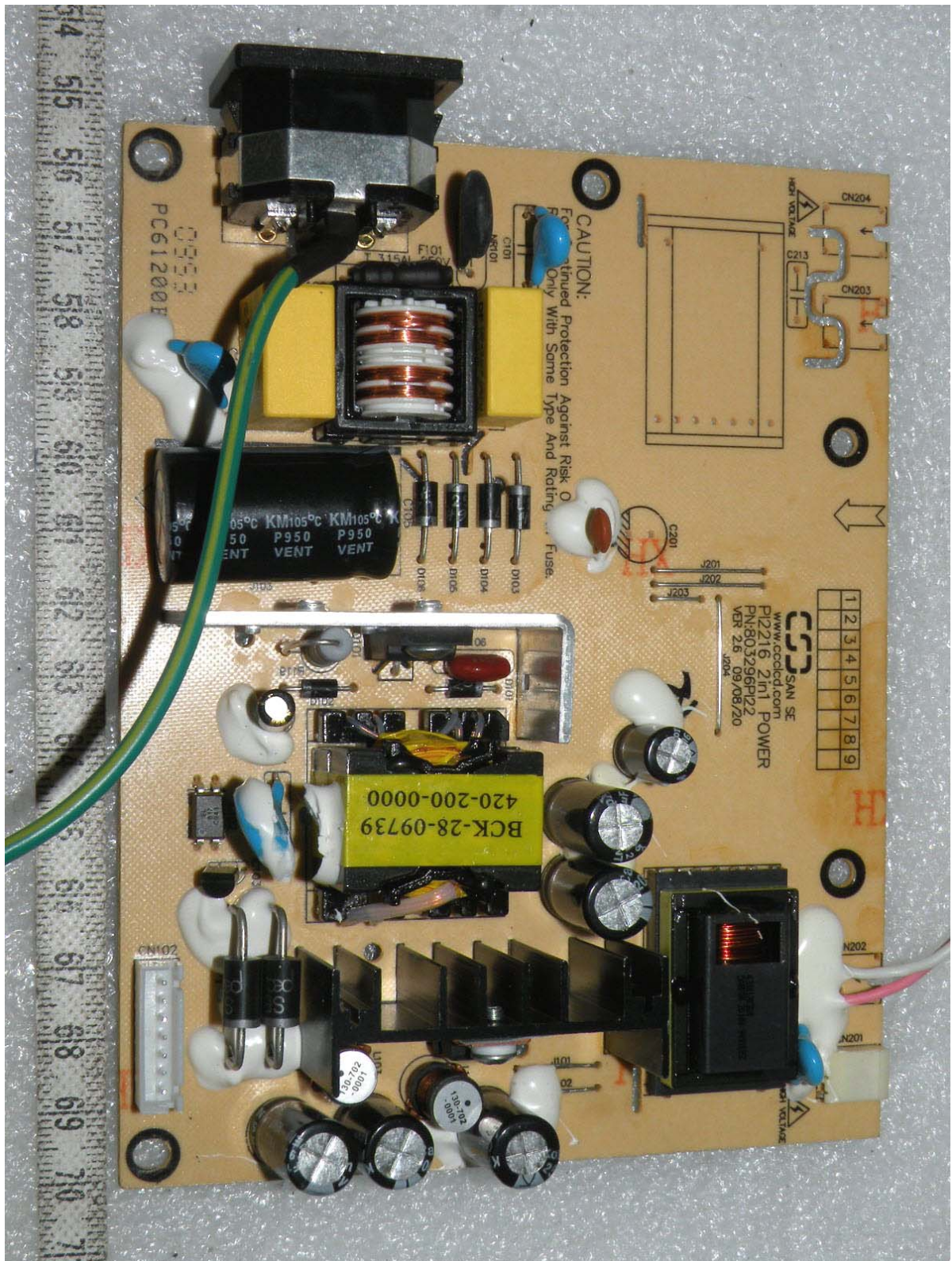


**Bottom side view of main board**



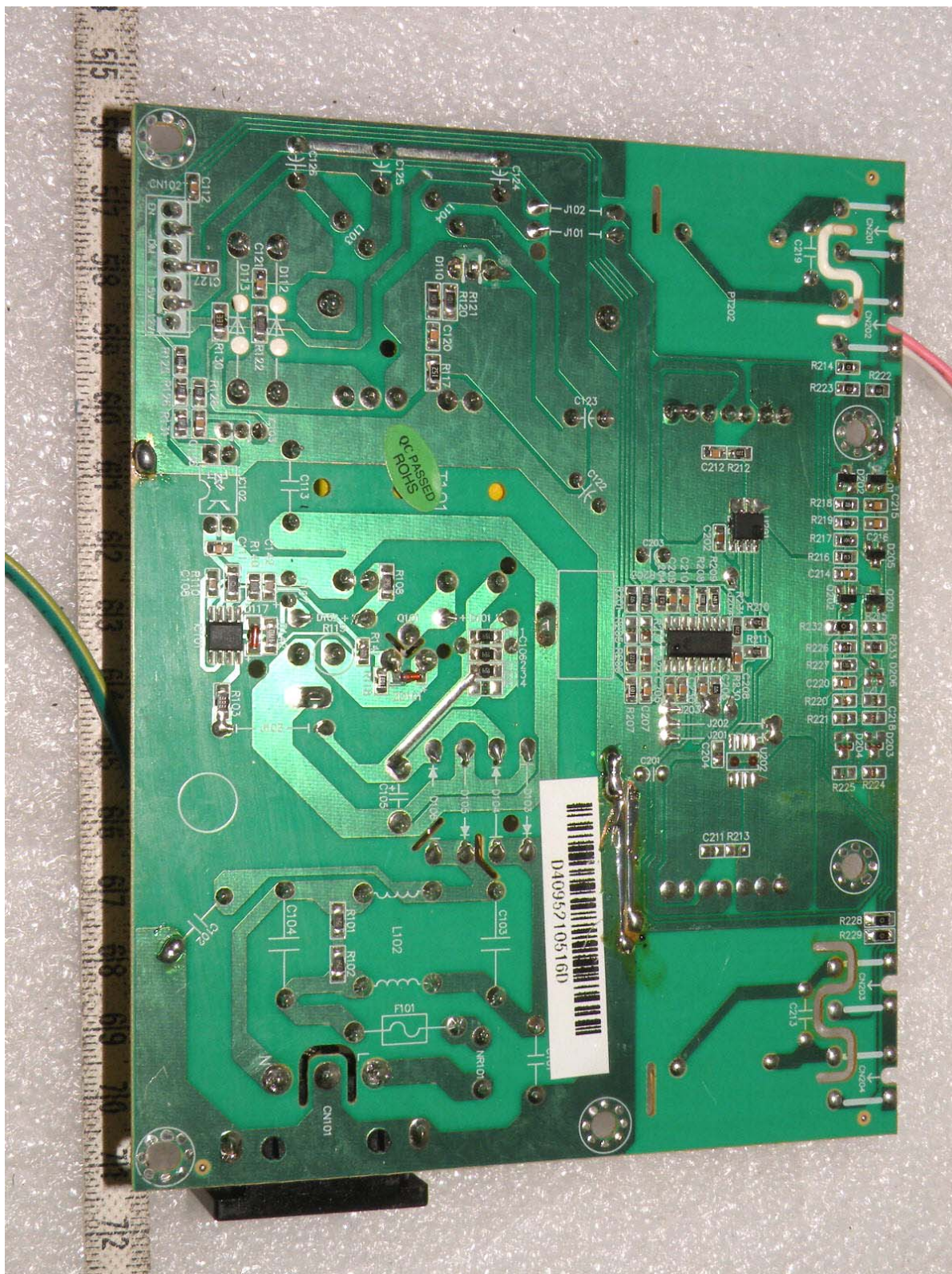


**Top side view of power board**



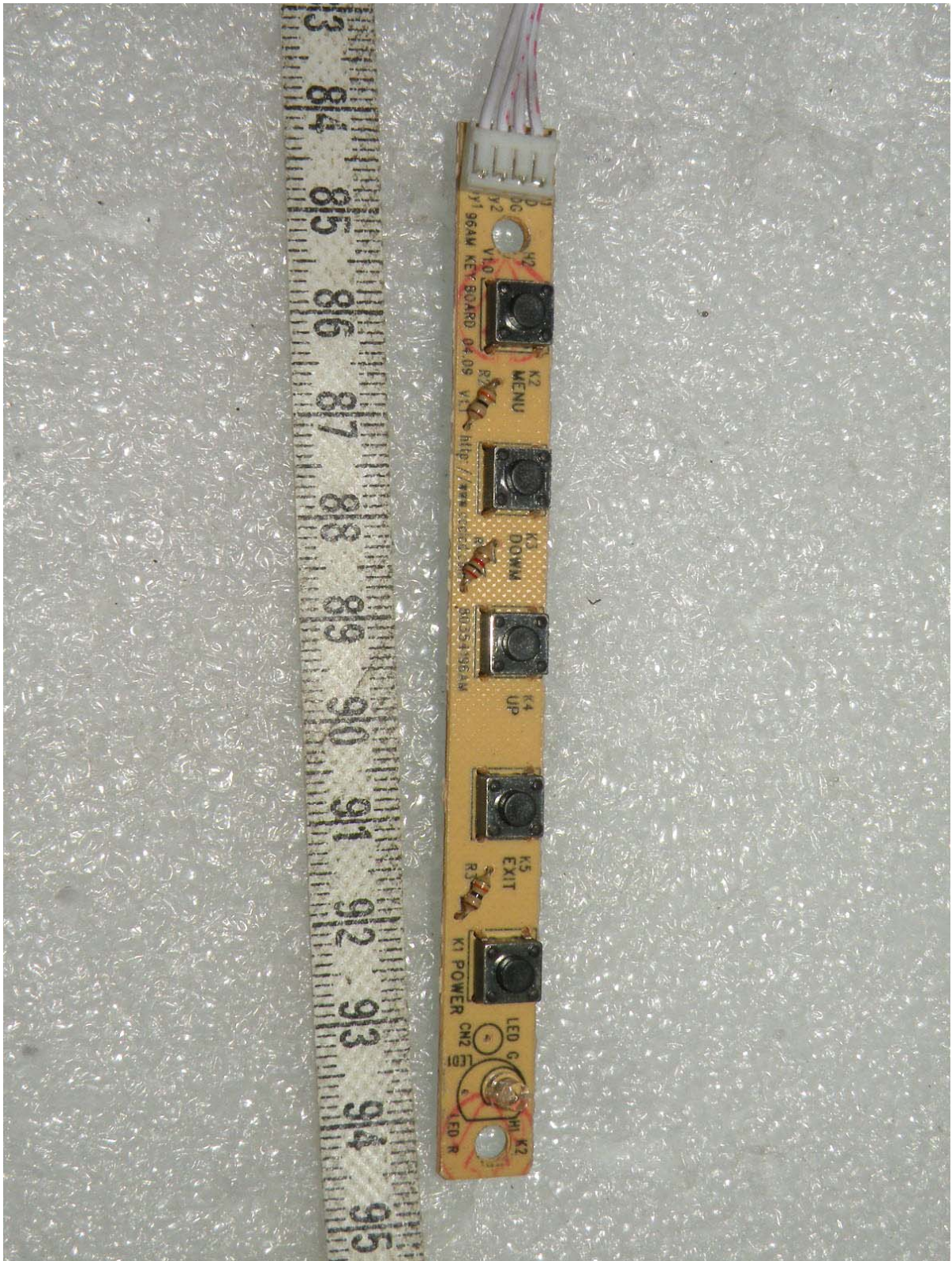


**Bottom side view of power board**



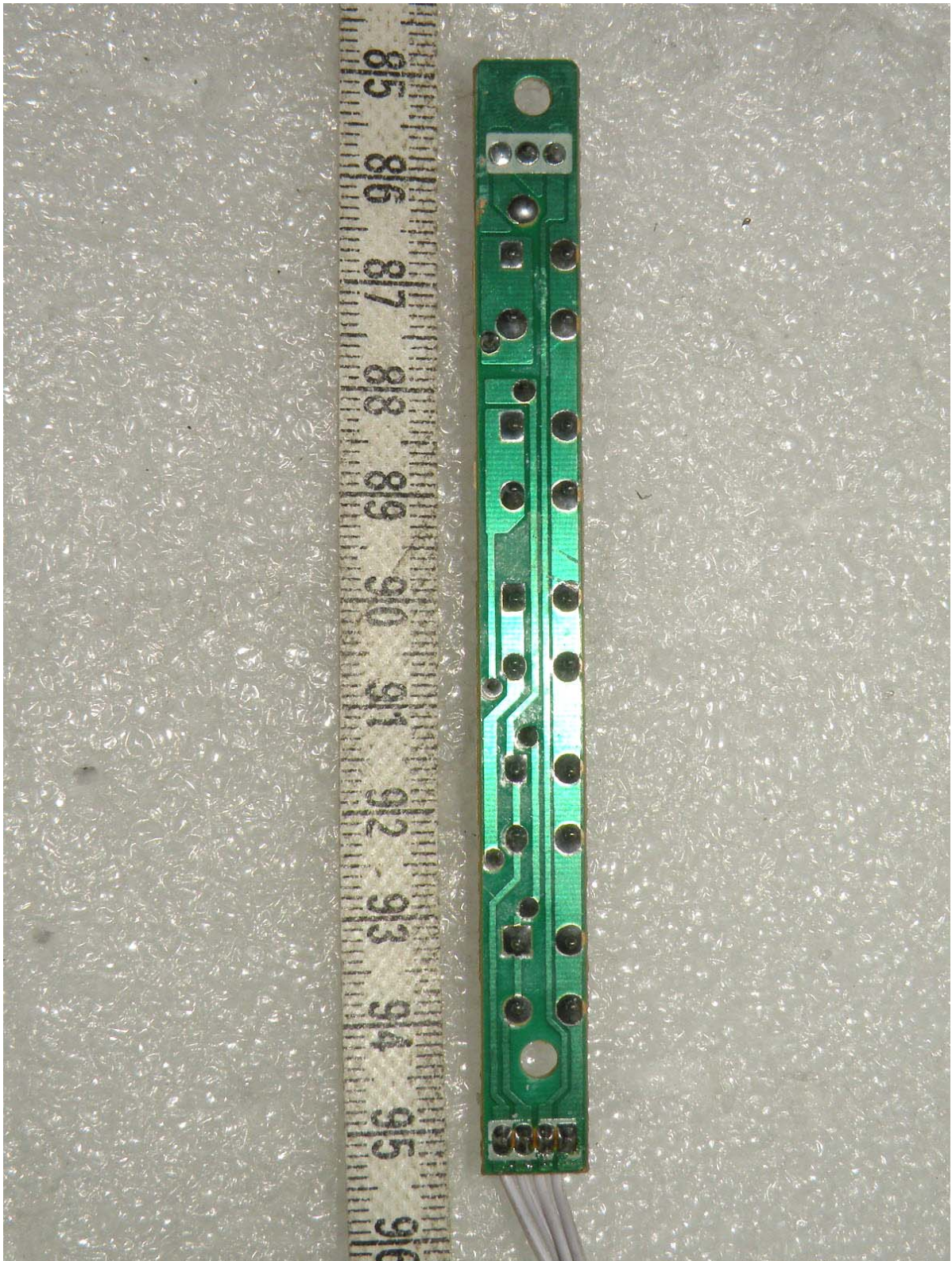


**Top side view of OSD board**



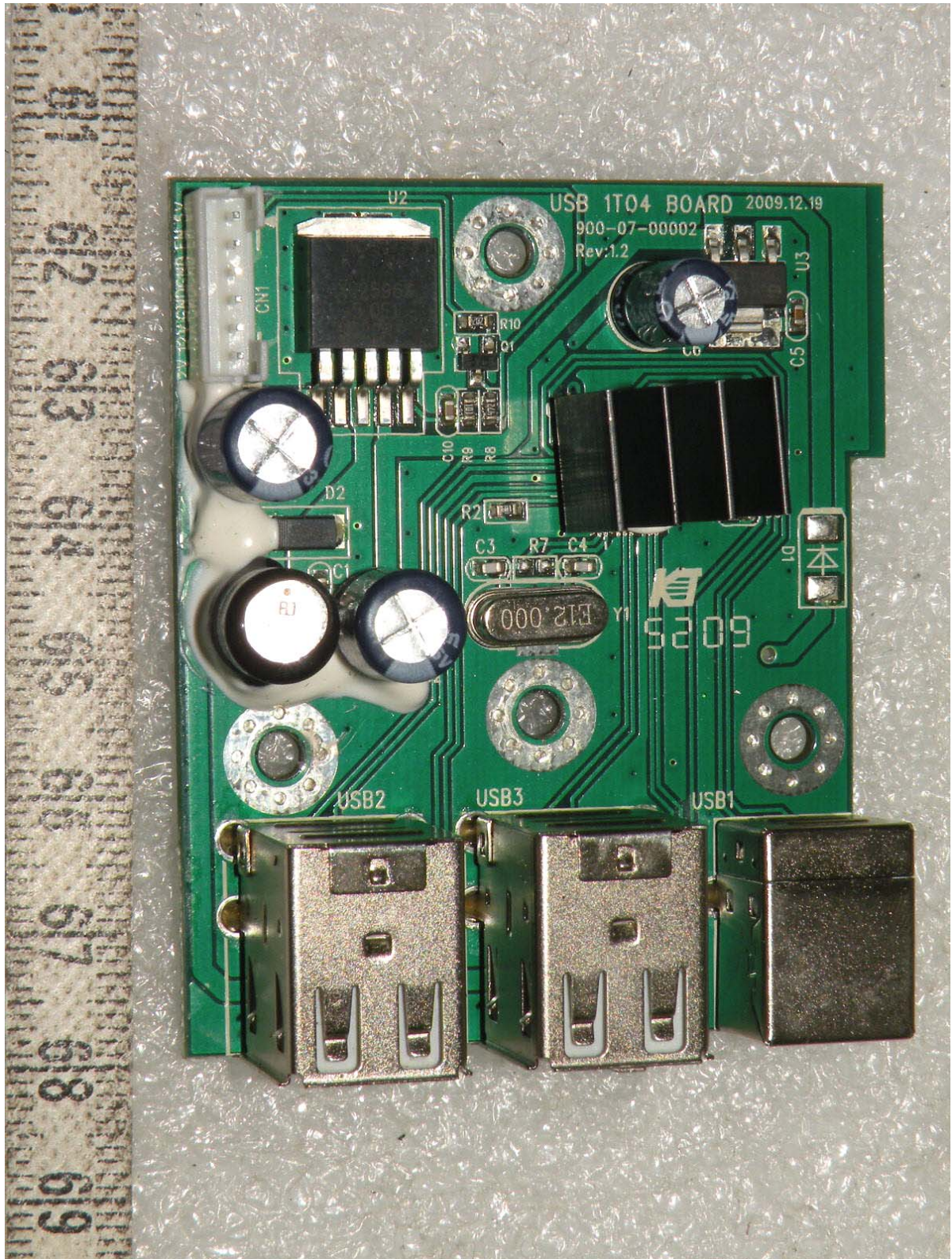


**Bottom side view of OSD board**



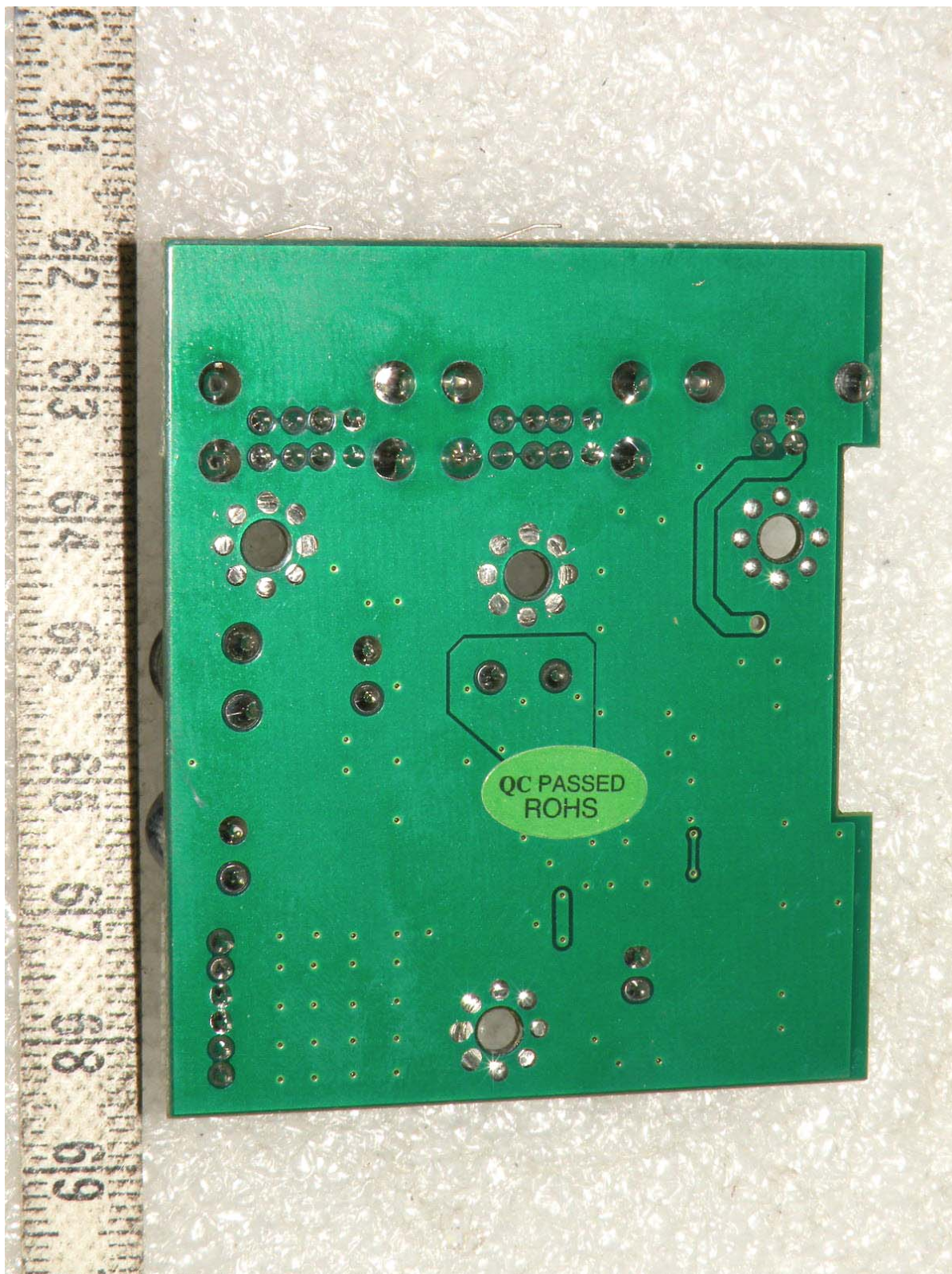


**Top side view of USB board**





**Bottom side view of USB board**





**View of LCD panel**





**View of LCD panel label**

