

**Class II permissive change of modification  
of presently authorized equipment**

**(FCC ID: PJIL21DPFAL0)**

**- Addition of LCD PANEL**

	LCD Panel Model Type	Manufacturer
Before (Original)	M215HW03	AU Optronics Corp. / CHINA
	LM215WF4	LG Display / CHINA
Addition	M215HTN01	AU Optronics Corp. / CHINA
After	M215HW03	AU Optronics Corp. / CHINA
	LM215WF4	LG Display / CHINA
	M215HTN01	AU Optronics Corp. / CHINA

**- Addition of LED board**

	LED board Model Type
Before (Original)	900-07-00017
Addition	900-07-00027
After	900-07-00017
	900-07-00027

Please refer to next part.

## A. Before LCD Panel Photographs

1. Model Type: M215HW03

- View of front



- View of rear







## 2. Model Type: LM215WF4

- View of front

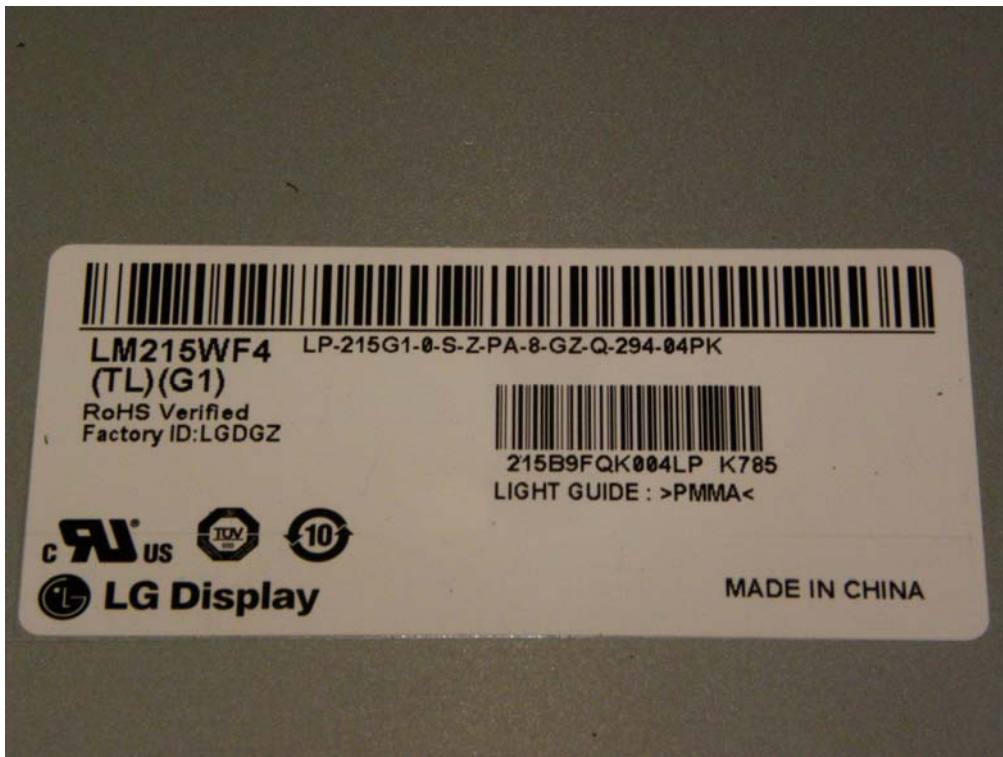


- View of rear





- View of label



## B. Addition LCD Panel Photographs

### 1. Model Type: M215HTN01

- View of front

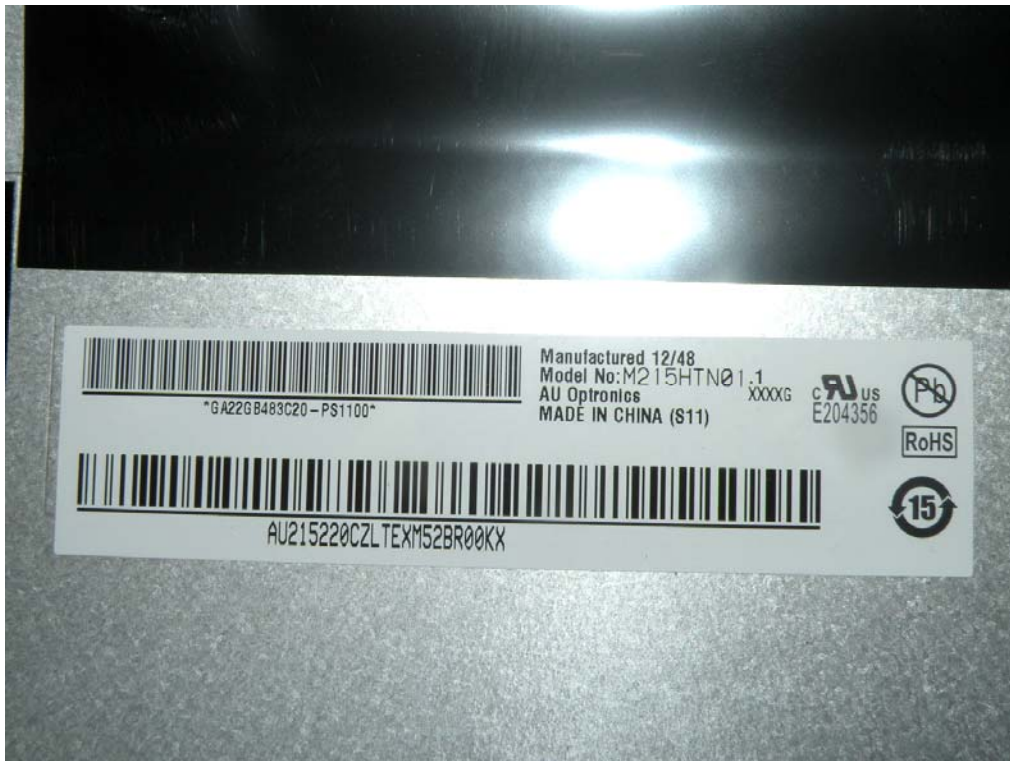




- View of rear



- View of label

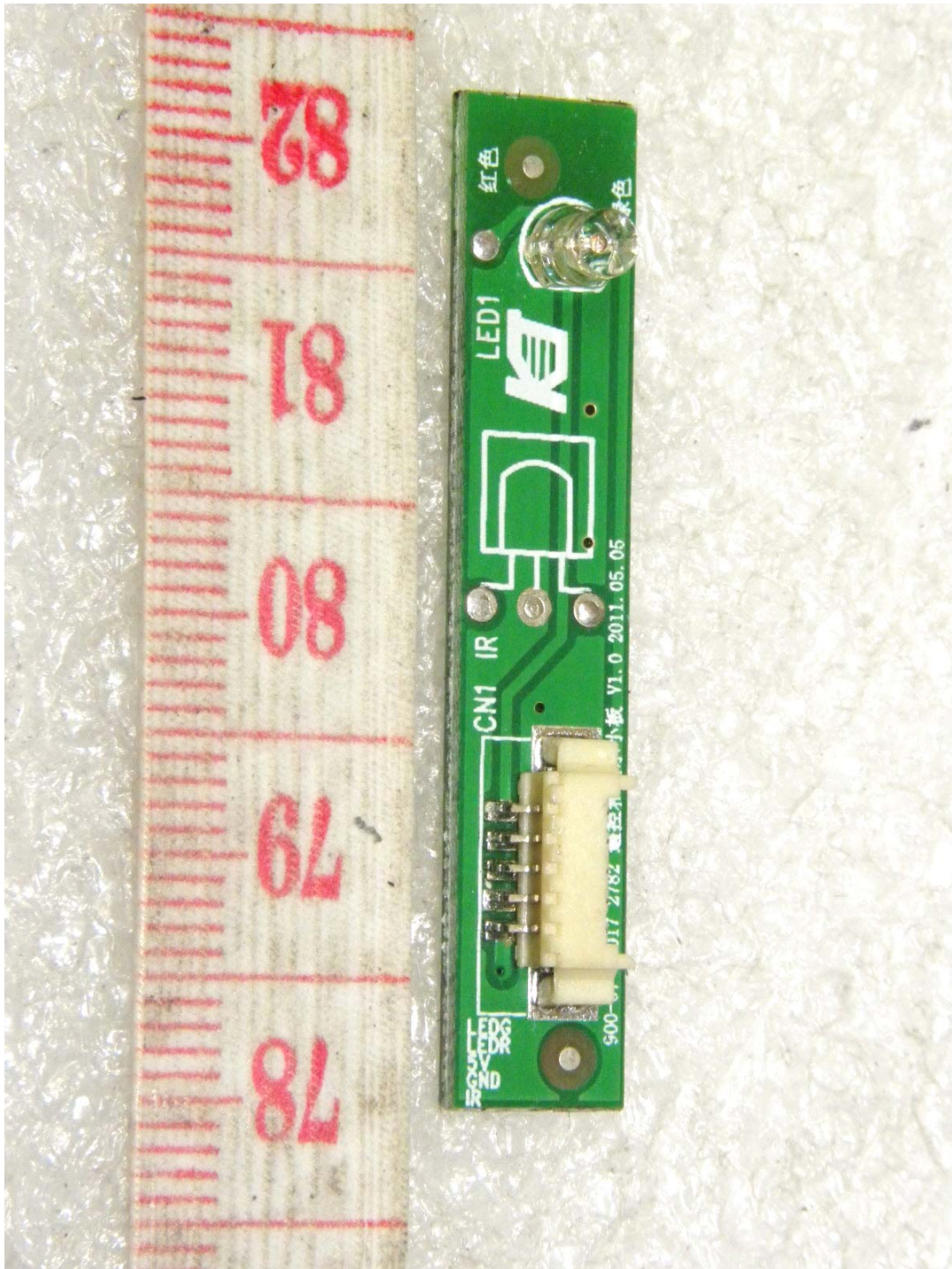




## C. Before LED board Photographs

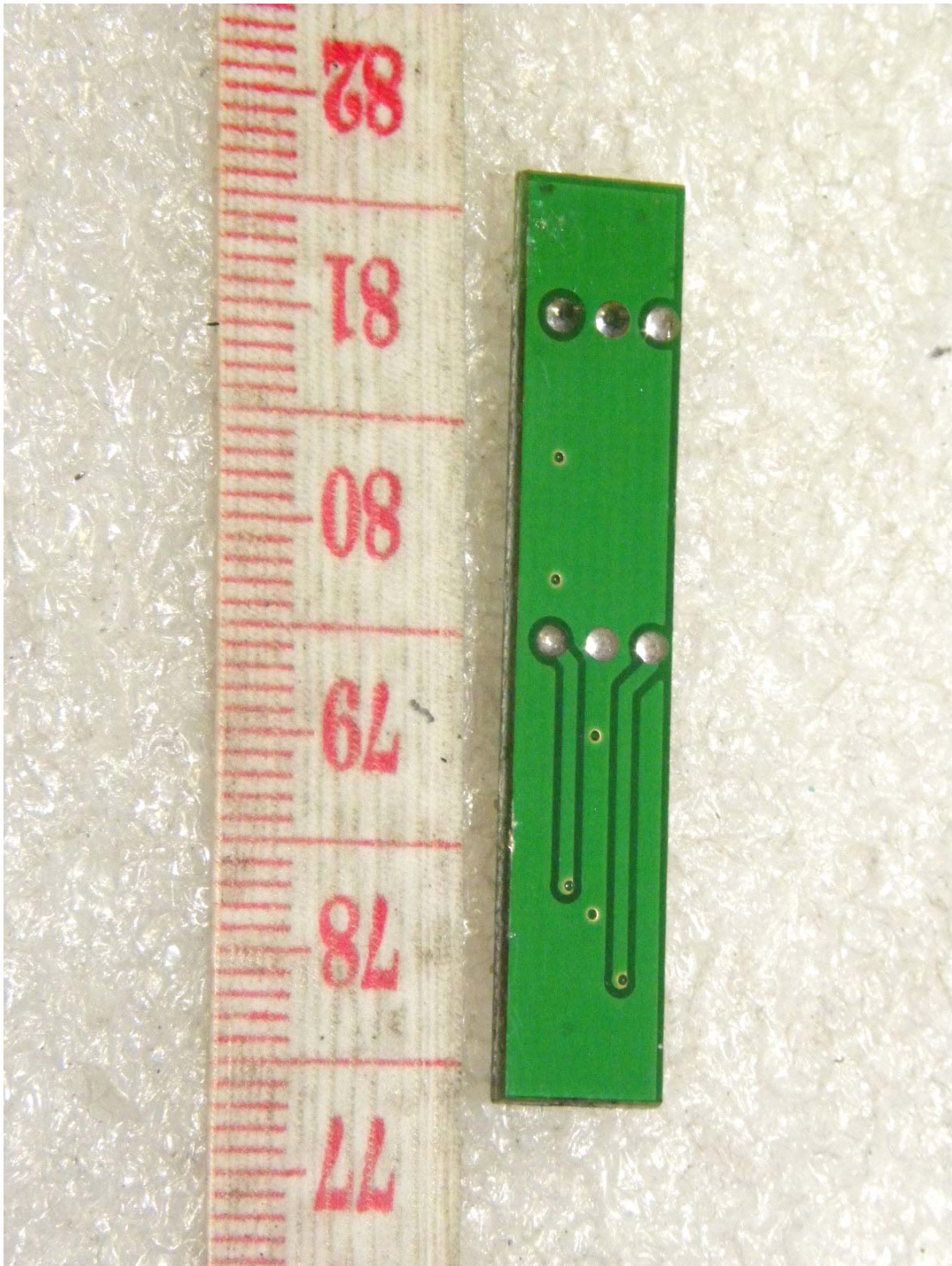
1. Model Type: 900-07-00017

- View of front





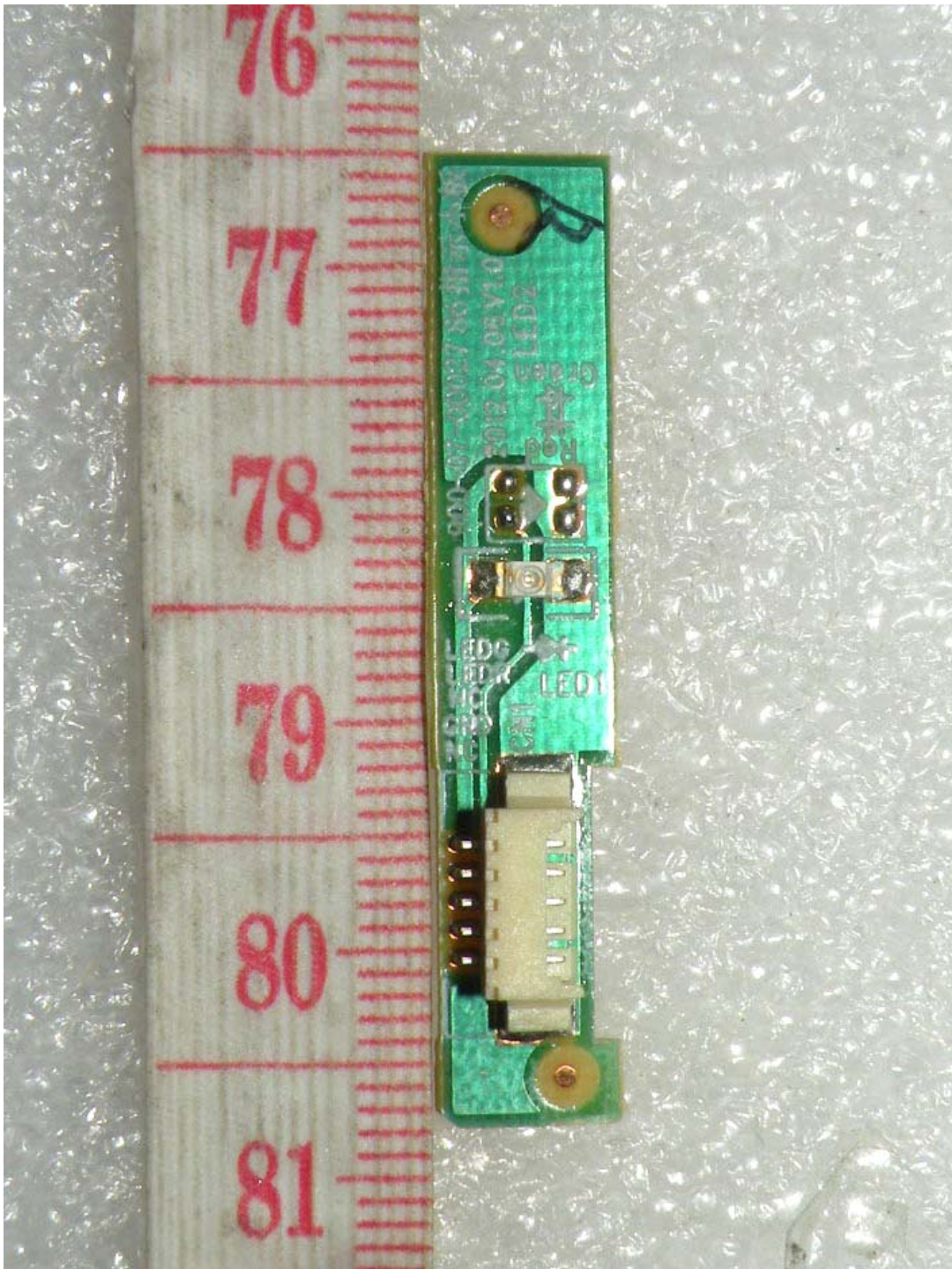
- View of rear



## D. Addition LED board Photographs

1. Model Type: 900-07-00027

- View of front





- View of rear

