

**Inside view of EUT #1**



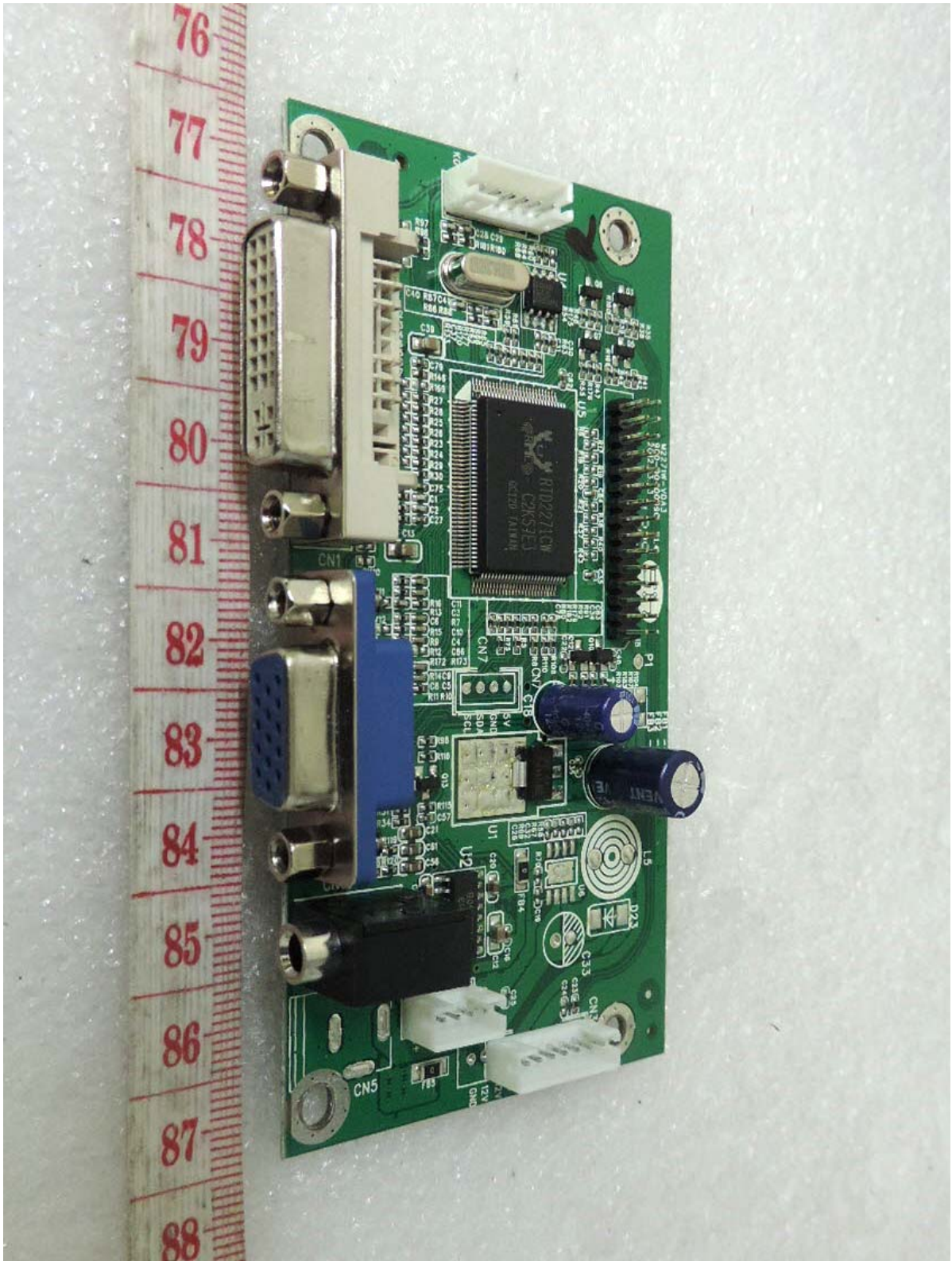
**Inside view of EUT #2-1**



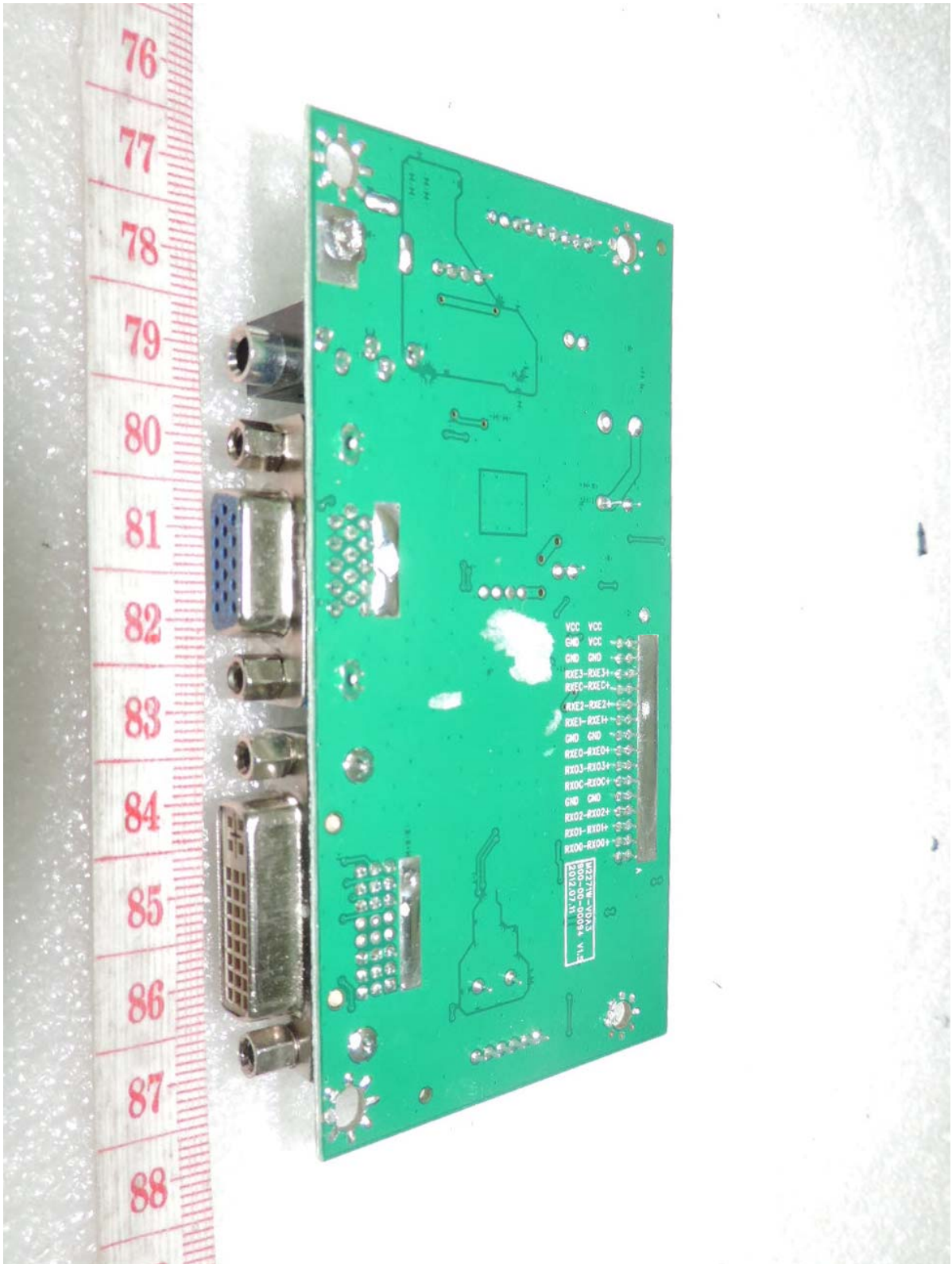
**Inside view of EUT #2-2**



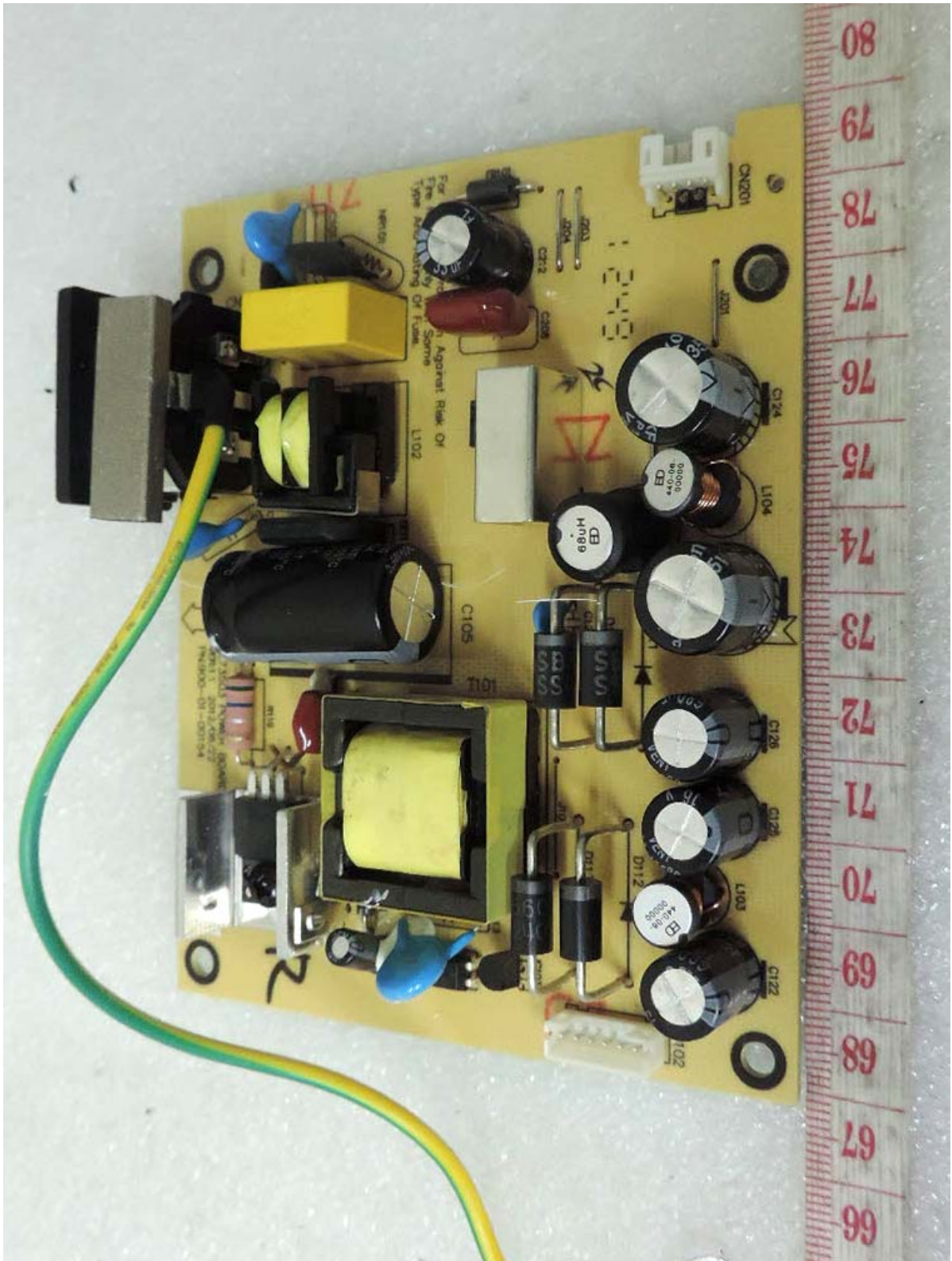
**Top side view of main board**



**Bottom side view of main board**

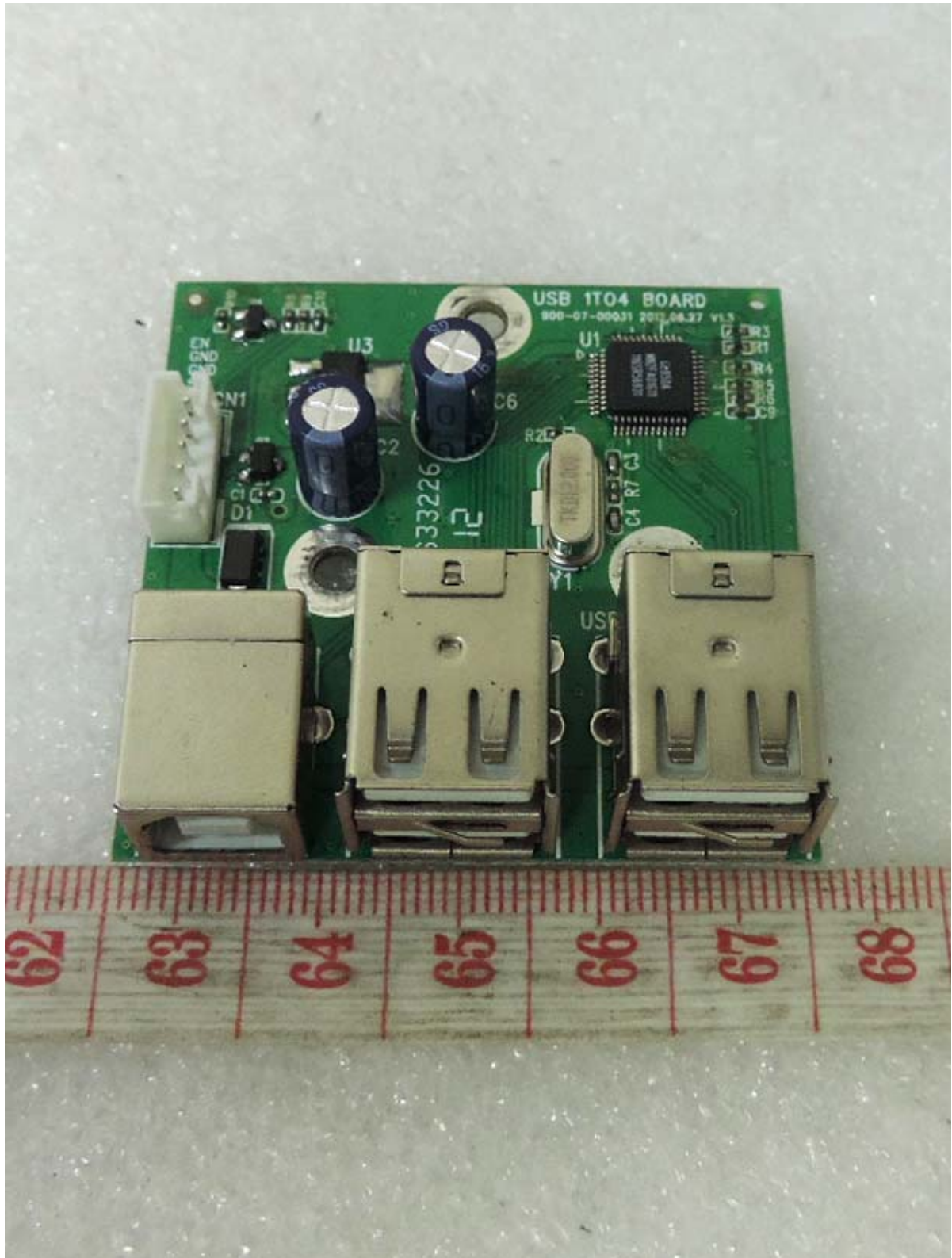


**Top side view of power board**



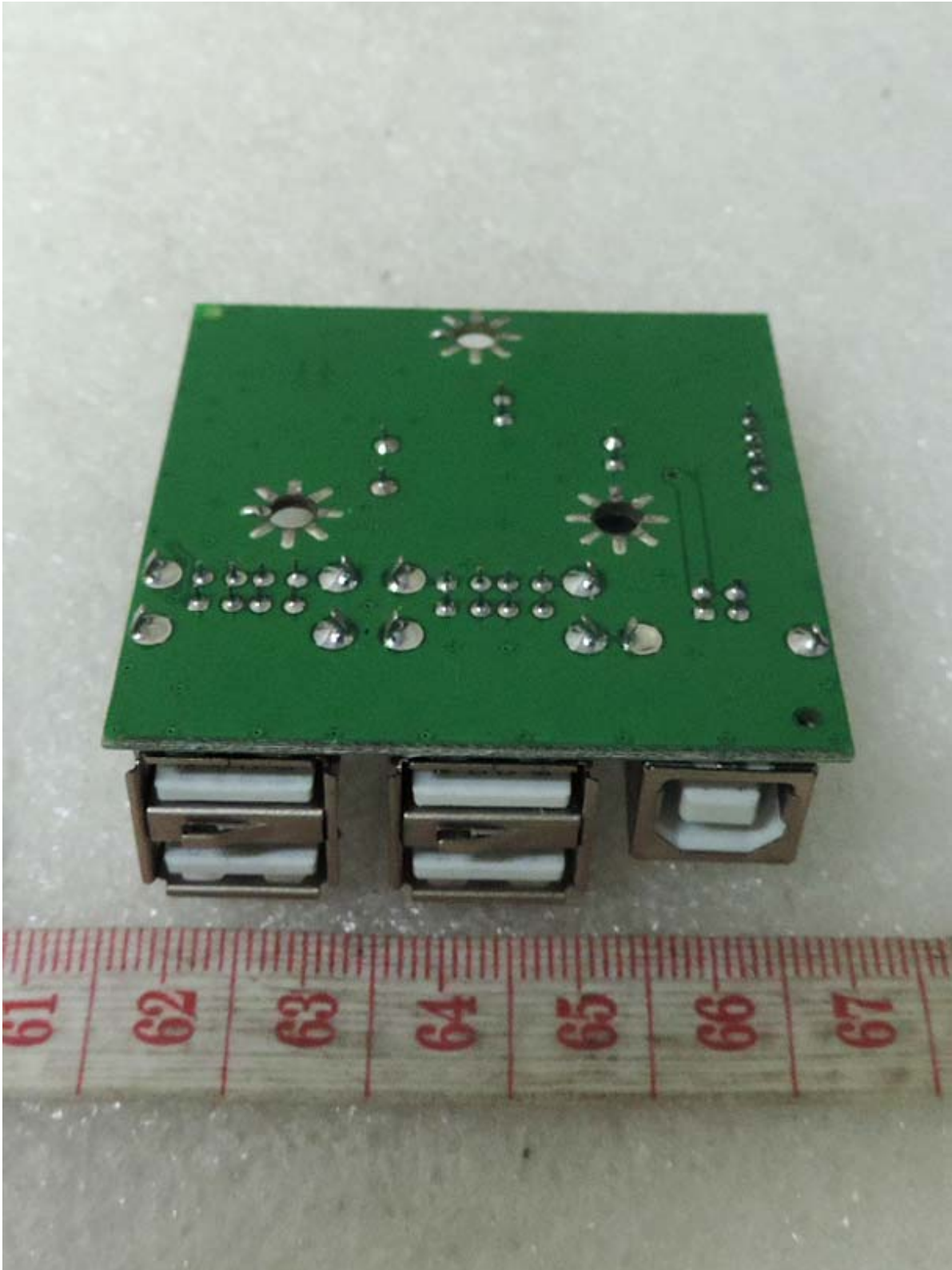


**Top side view of USB board**

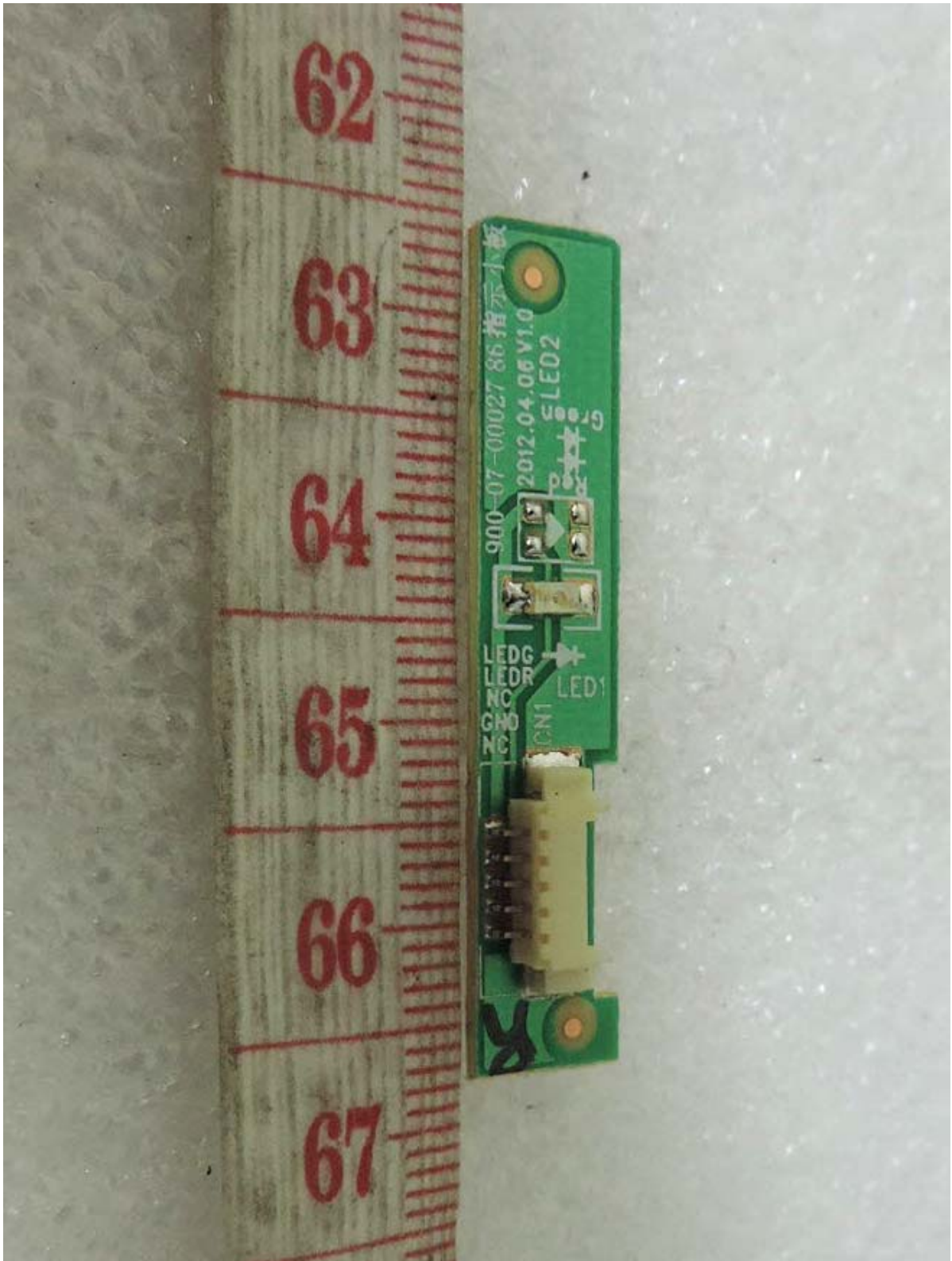




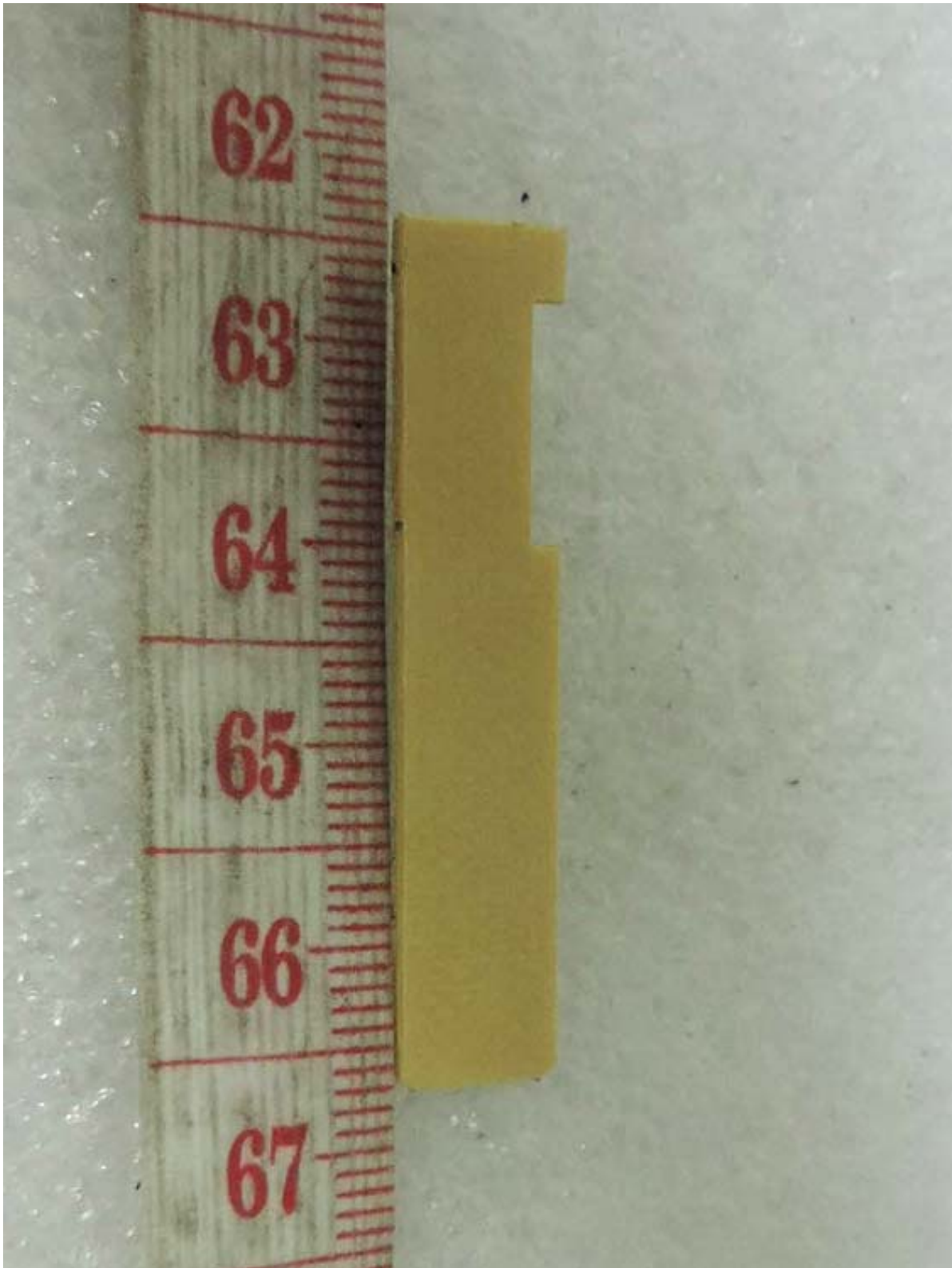
**Bottom side view of USB board**



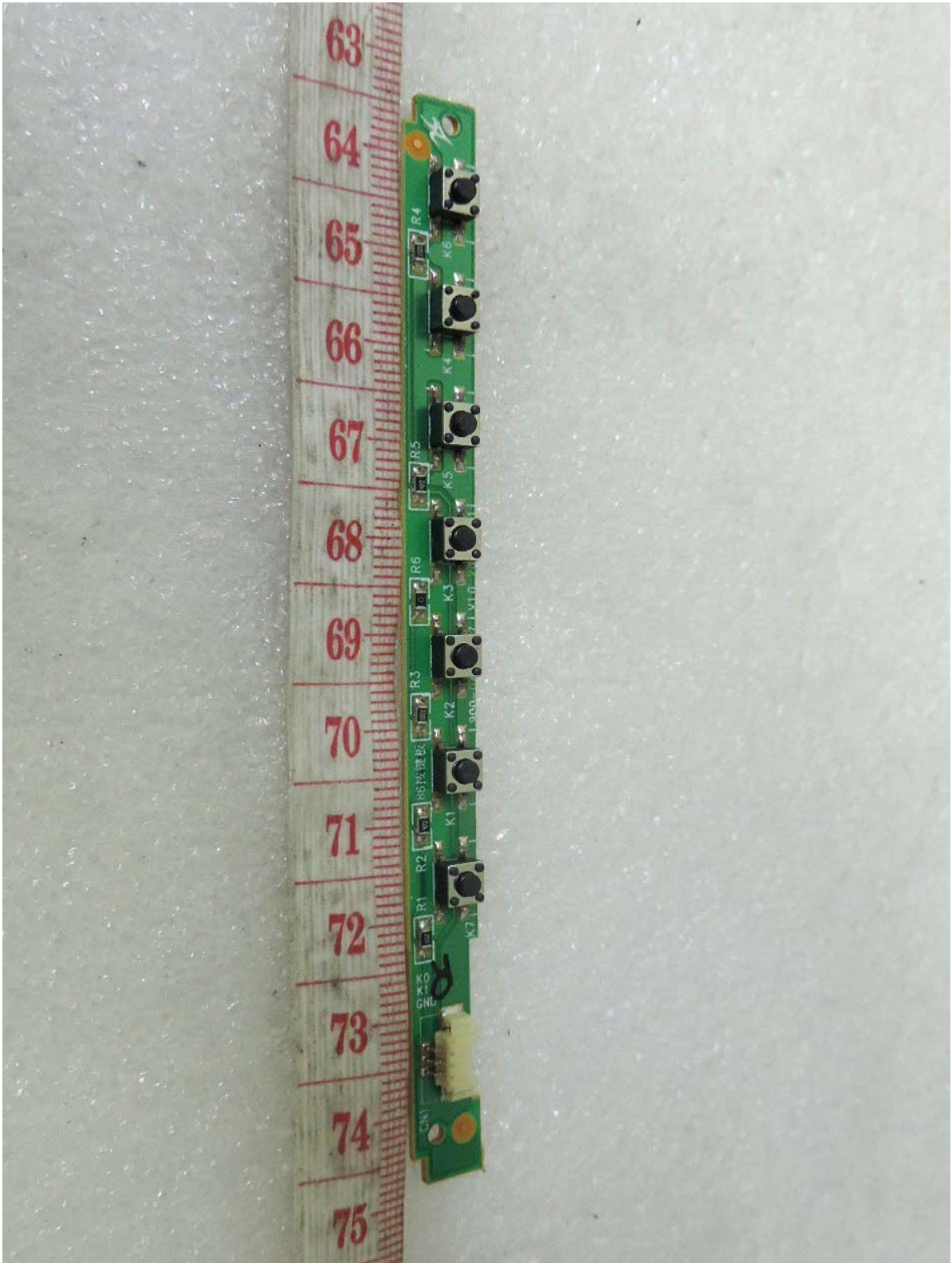
**Top side view of LED board**



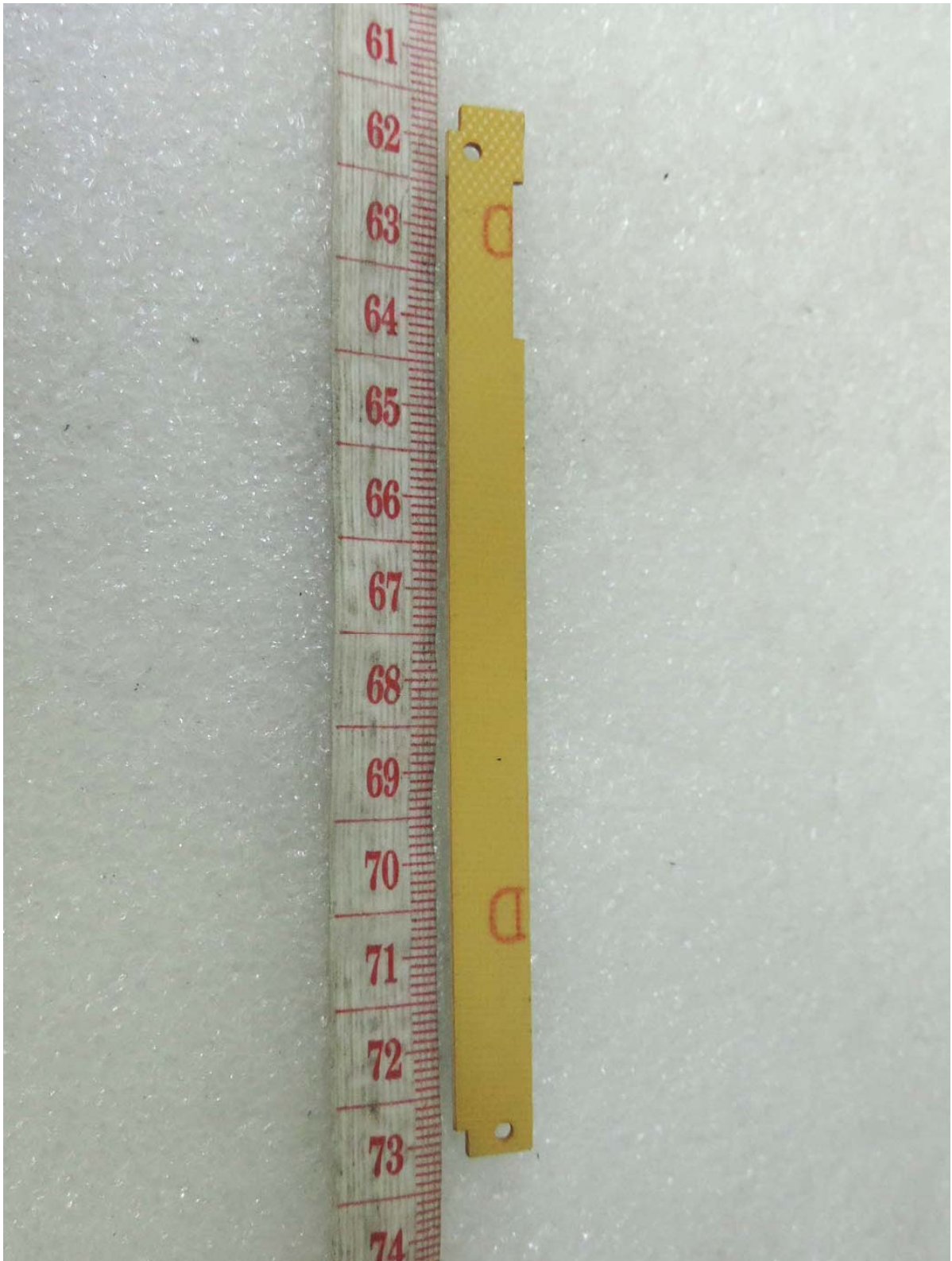
**Bottom side view of LED board**



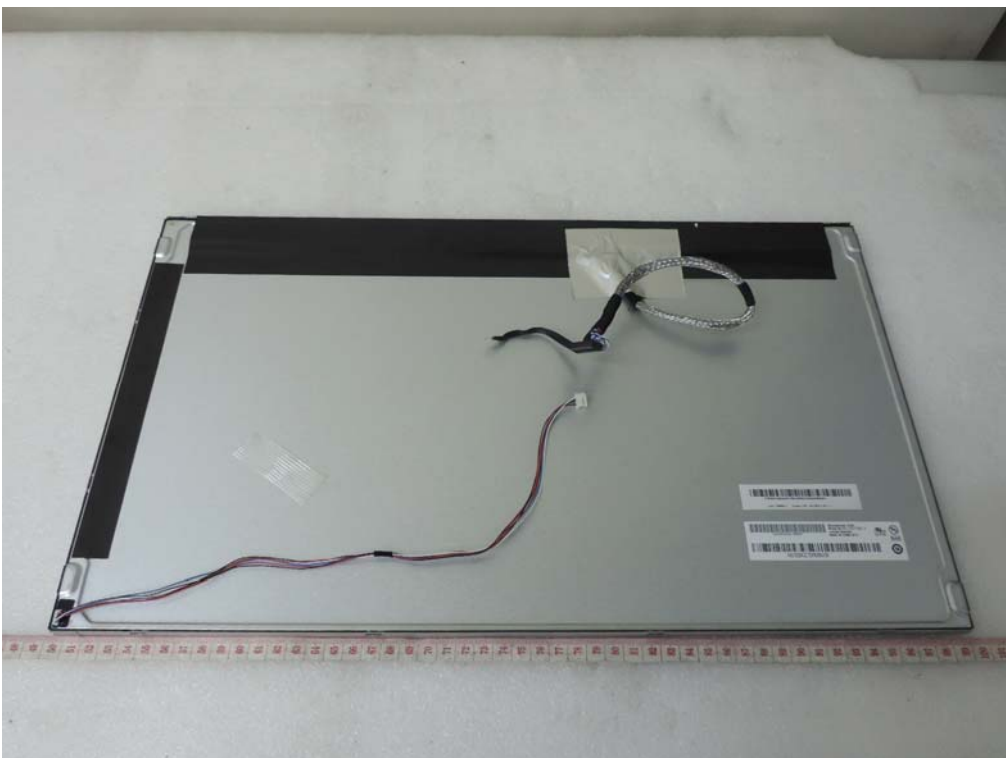
**Top side view of OSD board**



**Bottom side view of OSD board**



**View of LCD panel**



**View of LCD panel label**

