

**Class II permissive change of modification  
of presently authorized equipment**

**(FCC ID: PJIL19C0H020)**

**- Addition of LCD PANEL**

	LCD Panel Model Type	Manufacturer
Before (Original)	LTM190BT03	SAMSUNG/ CHINA
	LM190WX1	LG Display / CHINA
Addition	M190PW01	AU Optronics Corp./ CHINA
After	LTM190BT03	SAMSUNG/ CHINA
	LM190WX1	LG Display / CHINA
	M190PW01	AU Optronics Corp./ CHINA

**- Addition of Power board**

	Power board Model Type
Before (Original)	PI75164 VER2.6
Addition	PI75164 VER2.7H
After	PI75164 VER2.6
	PI75164 VER2.7H

Please refer to next part.

## A. Before LCD Panel Photographs

1. Model Type: LTM190BT03

- View of front



- View of rear

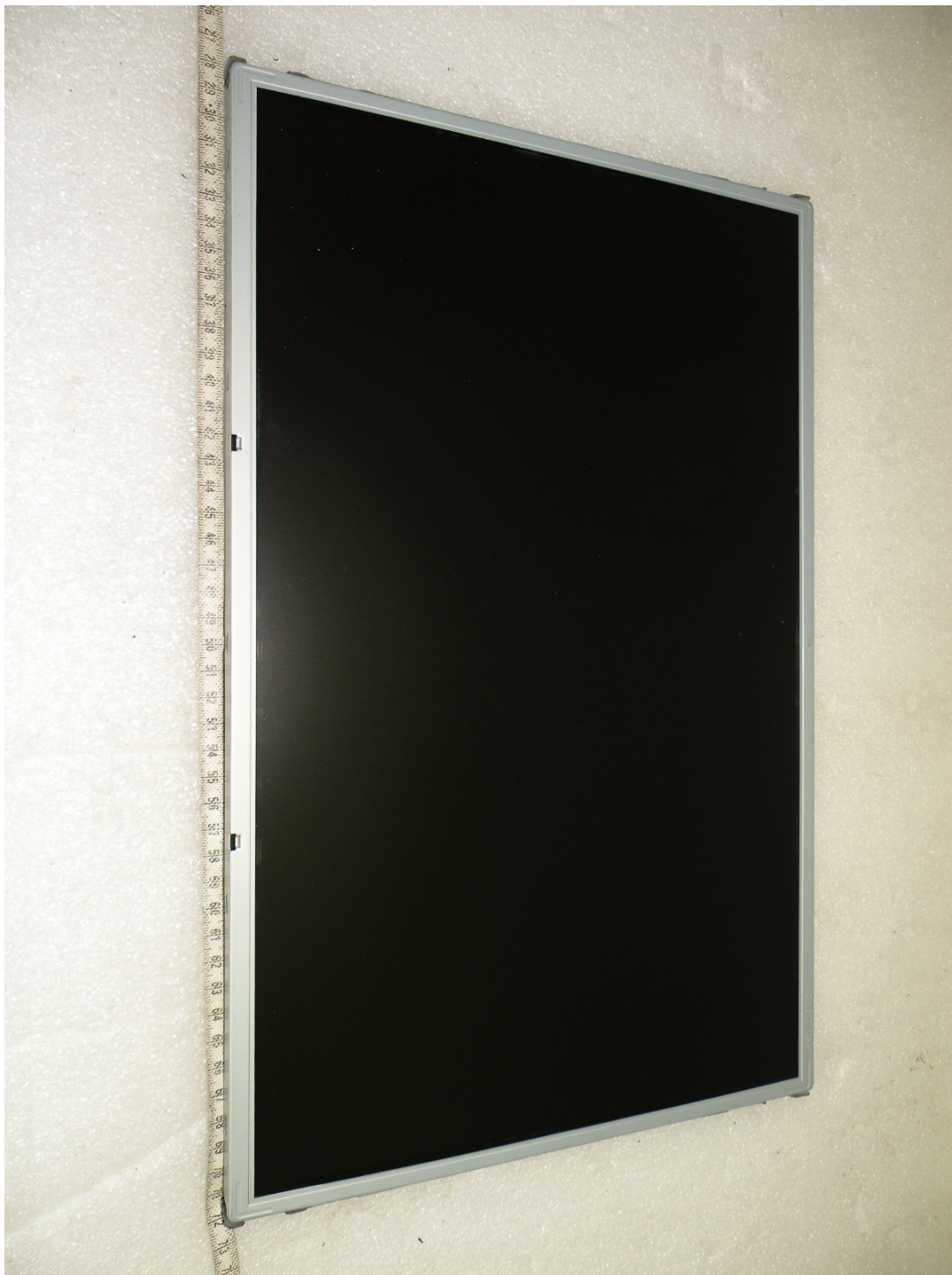


- View of label



## 2. Model Type: LM190WX1

- View of front



- View of rear



- View of label



## B. Addition LCD Panel Photographs

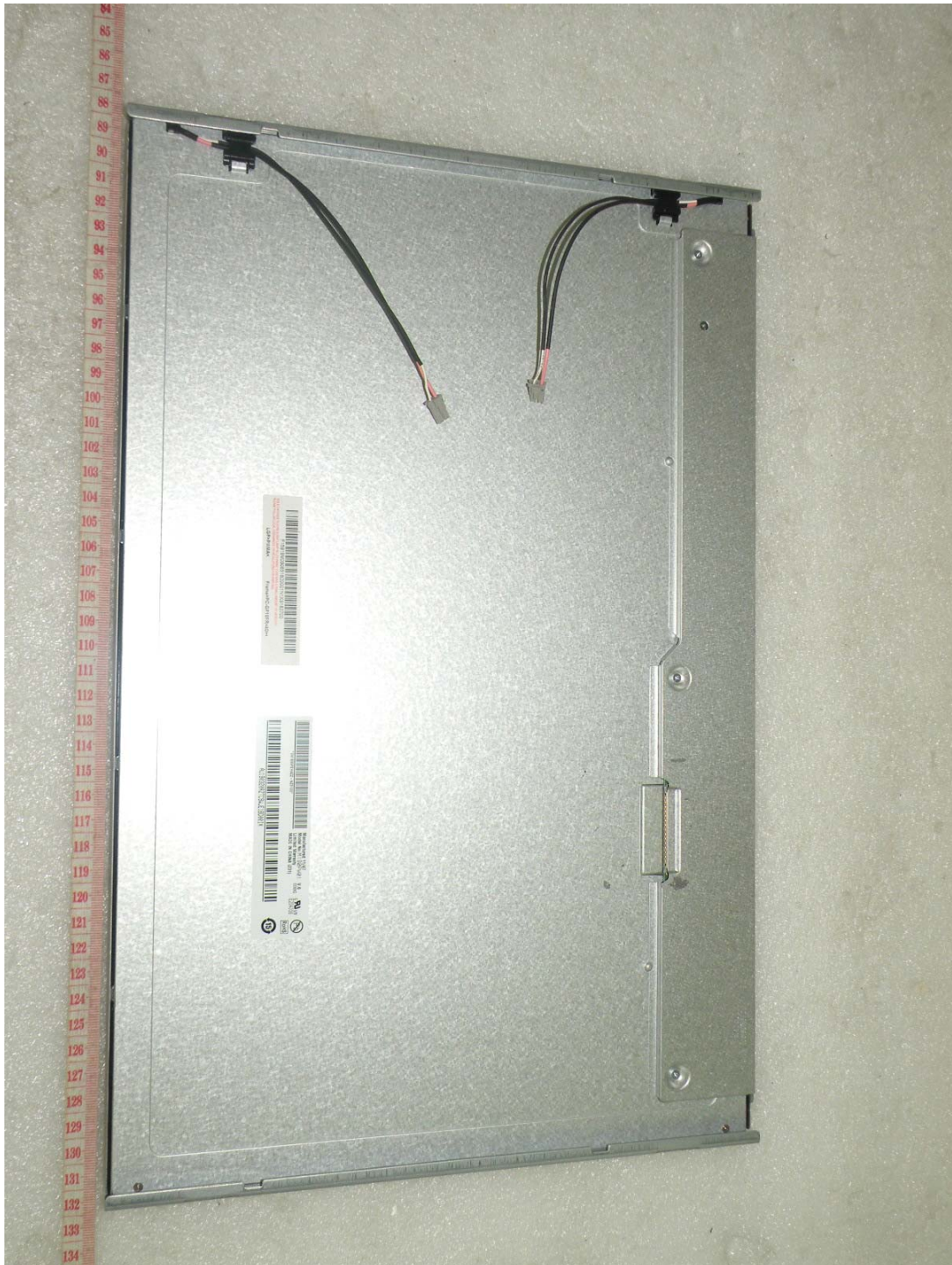
### 1. Model Type: M190PW01

- View of front





- View of rear

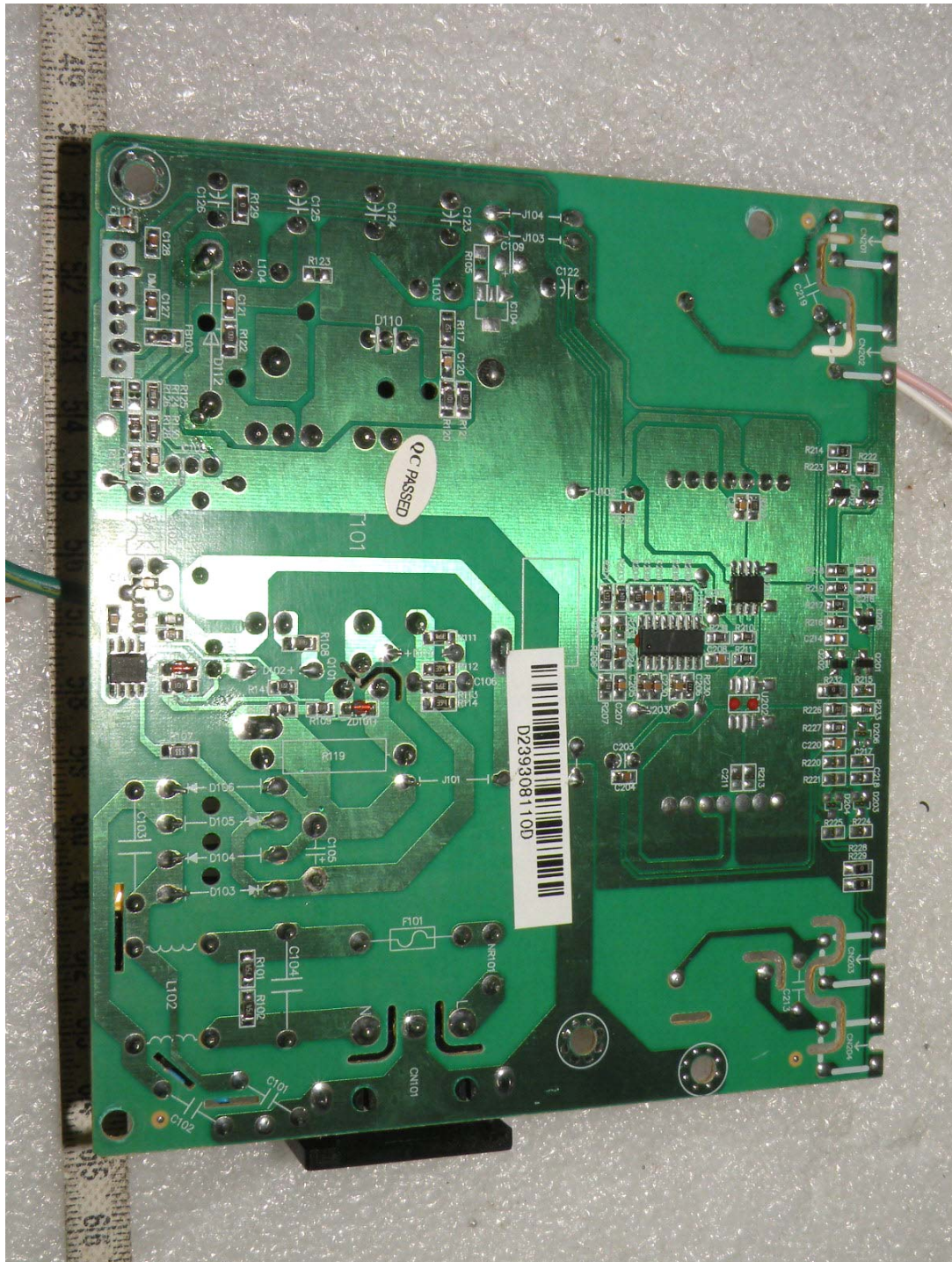


- View of label





- View of rear



## D. Addition Power board Photographs

### 1. Model Type: PI75164 VER2.7H

- View of front

