

JULY 15, 2004
Federal Communications Commission
Equipment Approval Services
7435 Oakland Mills Road
Columbia, MD 21046

SUBJECT : Hyundai ImageQuest Co., Ltd.
FCC ID: PJIL19C0D060
Class II permissive change
Orig. Grant Date: May 28, 2003

Gentlemen:

Transmitted herewith, on behalf of Hyundai ImageQuest Co., Ltd. is an application for a Class II Permissive Change Certification of the following 19-inch LCD Monitor:

FCC ID : PJIL19C0D060
Model/Type : L90D/ L19C0D060

The device is identical to the previously certified monitor except for the following:

1. Original LCD Panel
(Manufacture : SAMSUNG Electronics Model No.: LTM190E1-L01)
Alternate LCD Panel
(**Manufacture : SAMSUNG Electronics Model No.: LTM190E1-L03**)

Attached is the applicant's Cover Letter, External/Internal Photos, Test Set-Up Photos, FCC ID & Label Location, User Manual, Block Diagram and Test Report.

Should you have any questions or comments concerning the above, please contact the undersigned.



KI SOO KIM
EMC MAMAGER

cc: Mr. HEE JUNG KIM ----- R & D CENTER / MANAGER

• Solution for EMI

We, Hyundai ImageQuest CO.,LTD. , announce that all modifications will be incorporated into each unit sold in the U.S.

- 1.Attach a gasket on the Main Board and Main Frame to contact a LCD panel**
- 2. Attach a aluminum foil between Main Frame and LCD panel**
- 3. Apply a ferrite Core to the OSD board signal cable**

(Please refer to next page of the photographs for Solution for EMI)

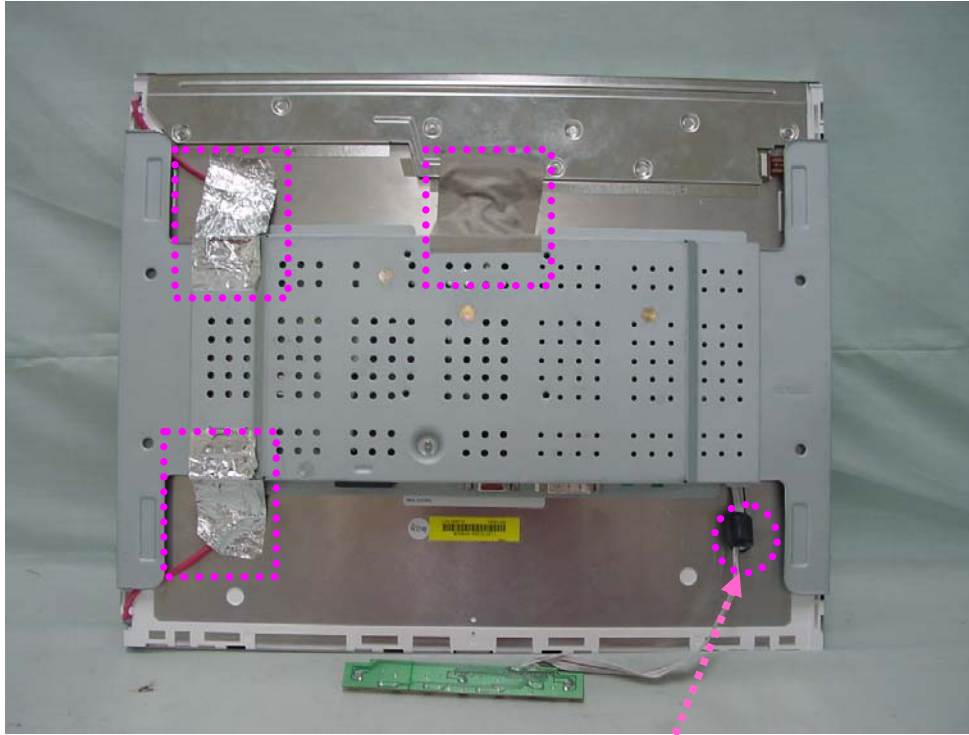
Hyundai
ImageQuest CO.,LTD.

2004.7.15

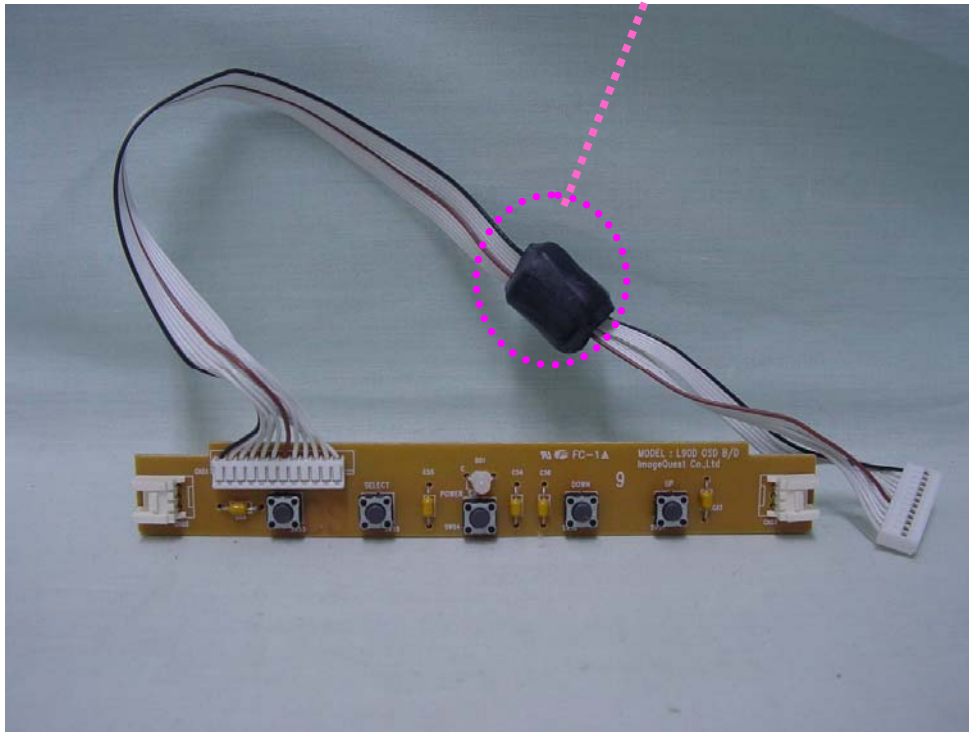
R & D CENTER / MANAGER
HEE JUNG KIM



1. Attach a aluminum foil between Main Frame and LCD panel



2. Apply a ferrite Core to the OSD board signal cable



3. Attach a gasket on the Main Board and Main Frame to contact a LCD panel

