

COVER LETTER

MODEL : L90D
TYPE : L19C0D060

• Solution for EMI

We, ImageQuest CO.,LTD. , announce that all modifications will be incorporated into each unit sold in the U.S.

- 1.Attach a gasket on the Main Board and Main Frame to contact a LCD panel**
- 2. Attach a aluminum foil between Main Frame and LCD panel**
- 3. Apply a ferrite Core to the OSD board signal cable**

(Please refer to next page of the photographs for Solution for EMI)

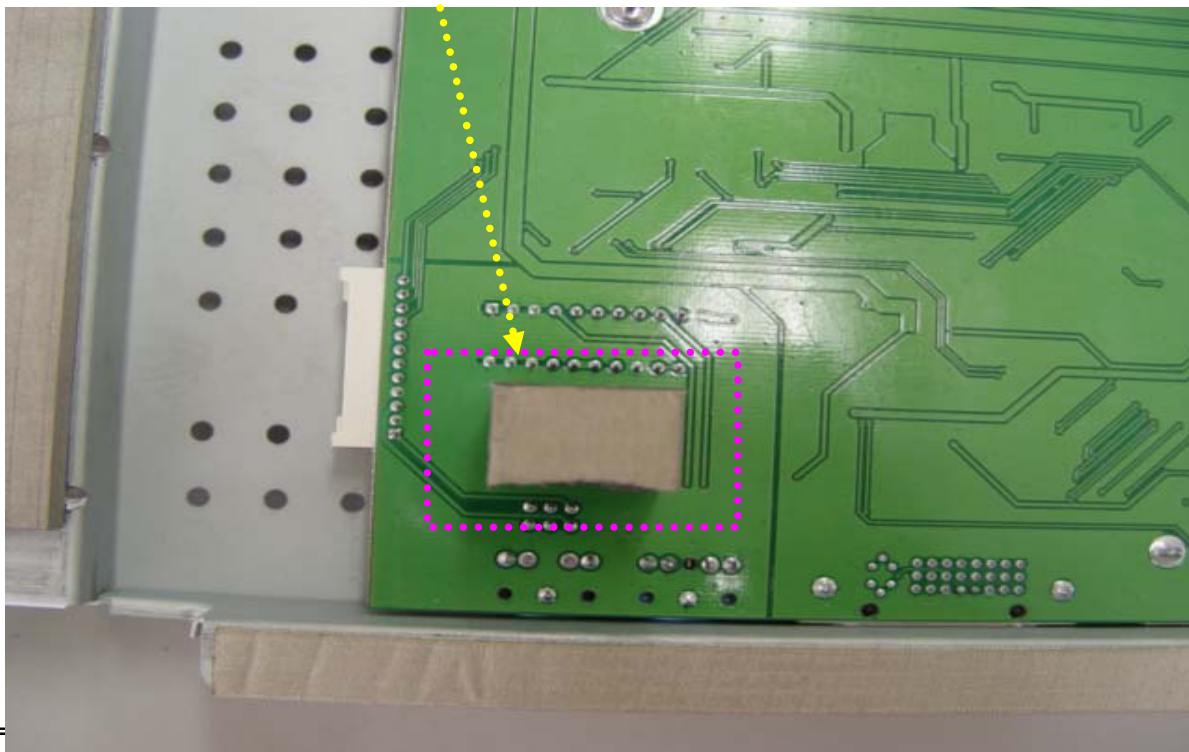
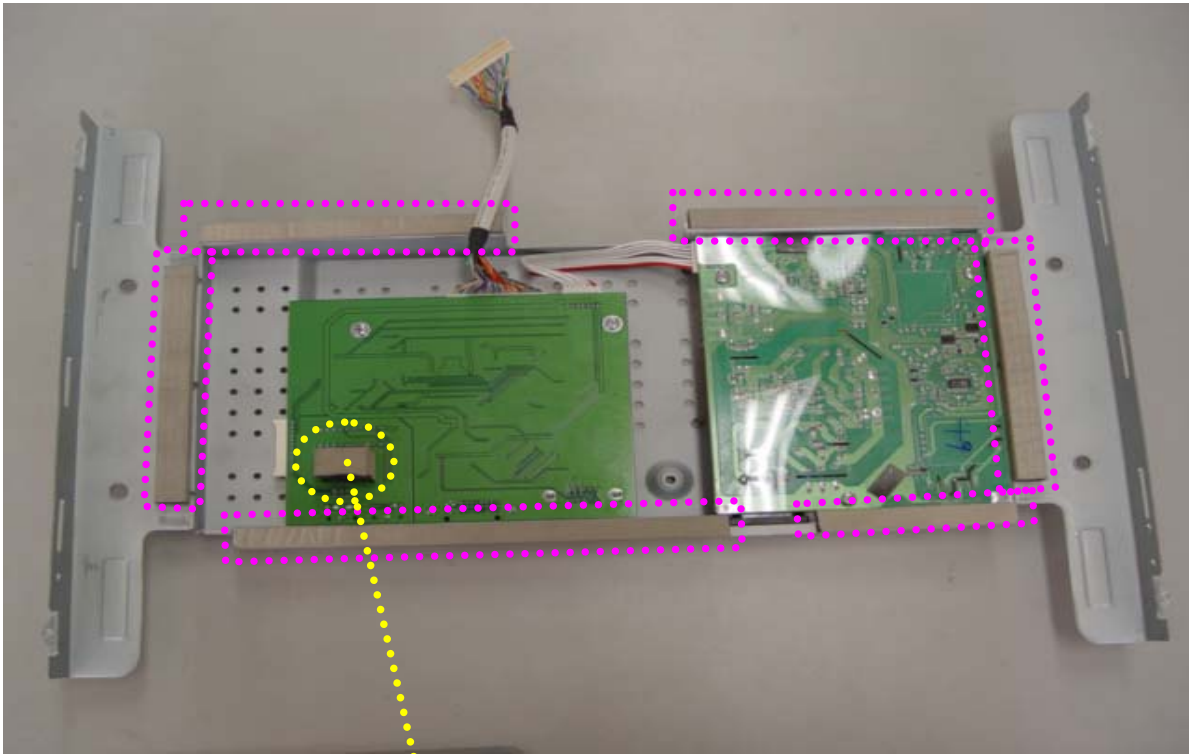
ImageQuest CO.,LTD.

2003.5.20

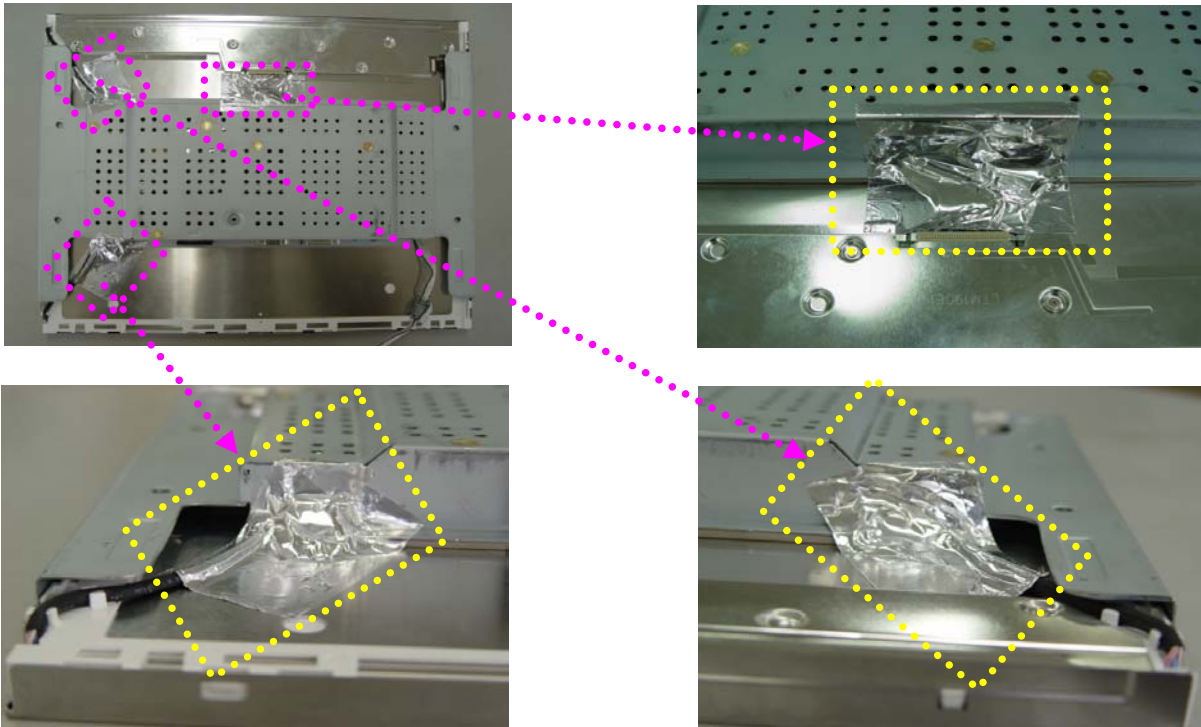
**R & D CENTER / MANAGER
HEE JUNG KIM**



1. Attach a gasket on the Main Board and Main Frame to contact a LCD panel



2. Attach a aluminum foil between Main Frame and LCD panel



3. Apply a ferrite Core to the OSD board signal cable

