



**HYUNDAI CALIBRATION & CERTIFICATION TECH. CO., LTD.**

Product Compliance Division, EMC Team  
SAN 136-1, AMI-RI , BUBAL-EUP, ICHEON-SI, KYOUNKI-DO, 467-701, KOREA  
TEL : +82 31 639 8518 FAX : +82 31 639 8525

**CERTIFICATION**

**Manufacture;**  
**IMAGEQUEST CO., LTD.**

SAN 136-1, AMI-RI , BUBAL-EUP, ICHEON-SI,  
KYOUNKI-DO, 467-701,KOREA

IMAGEQUEST FRN : 0005-8664-39

**Date of Issue : May 30, 2003**

**Test Report No.: HCT-F03-0504**

**Test Site: HYUNDAI CALIBRATION & CERTIFICATION  
TECHNOLOGIES CO., LTD.**

**HCT FRN : 0005-8664-21**

**FCC ID :**

**PJIL19A0D061**

**MODEL / TYPE :**

**L19T/L19A0D061**

<b>Rule Part(s):</b>	<b>Part 15 &amp; 2; ET Docket 95-19</b>
<b>Equipment Class:</b>	<b>FCC Class B Peripheral Device (JBP)</b>
<b>Standard(s):</b>	<b>FCC Class B: 1998 (CISPR 22)</b>
<b>EUT Type:</b>	<b>19" LCD Monitor</b>
<b>Max. Resolution(s):</b>	<b>1280 X 1024(@80.0KHz/75Hz)</b>
<b>Model(s):</b>	<b>L19T</b>
<b>Port/Connector(s)</b>	<b>15-pin D-sub VGA, AUDIO IN/OUT.</b>
<b>LCD Panel</b>	<b>Samsung Electronics (LTM190E1-L01)</b>

This equipment has been shown to be in compliance with the applicable technical standards as indicated in the measurement report and was tested in accordance with the measurement procedures specified in ANSI C63.4-1992 (Grant Notes: #19, #28).

I attest to the accuracy of data. All measurements reported herein were performed by me or were made under my supervision and are correct to the best of my knowledge and belief. I assume full responsibility for the completeness of these measurements and vouch for the qualifications of all persons taking them.

Report prepared by : Ki-Soo Kim  
Manager of EMC Tech. Part



HYUNDAI CALIBRATION & CERTIFICATION TECH. CO., LTD.



# TABLE OF CONTENTS

PAGE

<b>REPORT COVER</b>	<b>1</b>
<b>TABLE OF CONTENTS</b>	<b>2</b>
<b>1.1 SCOPE</b>	<b>3</b>
<b>2.1 INTRODUCTION (SITE DESCRIPTION)</b>	<b>4</b>
<b>3.1 PRODUCTION INFORMATION</b>	<b>5-7</b>
<b>4.1 DESCRIPTION OF TESTS (CONDUCTED)</b>	<b>8</b>
<b>4.3 DESCRIPTION OF TESTS (RADIATED)</b>	<b>9</b>
<b>5.1 LIST OF SUPPORT EQUIPMENT</b>	<b>10-11</b>
<b>6.1 TEST DATA (CONDUCTED)</b>	<b>12-16</b>
<b>7.1 TEST DATA (RADIATED)</b>	<b>17</b>
<b>8.1 SMPLE CALCULATIONS</b>	<b>18</b>
<b>9.1 TEST EQUIPMENT</b>	<b>19</b>
<b>10.1 TEST SOFTWARE USED</b>	<b>20</b>
<b>11.1 CONCLUSION</b>	<b>21</b>

**ATTACHMENT A: FCC ID LABEL & LOCATION**

**ATTACHMENT B: EXTERNAL PHOTOGRAPHS**

**ATTACHMENT C: BLOCK DIAGRAM**

**ATTACHMENT D: TEST SETUP PHOTOGRAPHS**

**ATTACHMENT E: USER'S MANUAL**

**ATTACHMENT F-1: INTERNAL PHOTOGRAPHS**

**ATTACHMENT F-2: INTERNAL PHOTOGRAPHS**

**ATTACHMENT G: CIRCUIT DIAGRAM(S)**

---

# MEASUREMENT REPORT

## 1.1 Scope

Measurement and determination of electromagnetic emissions (EME) of radio frequency devices including intentional and/or unintentional radiators for compliance with the technical rules and regulations of the Federal Communications Commission.

<b>Applicant Name:</b>	IMAGEQUEST
<b>Address:</b>	SAN 136-1, AMI-RI , BUBAL-EUP, ICHEON-SI, KYOUNKI-DO, 467-701,KOREA

- **FCC ID : PJIL19A0D061**
- Equipment Class: FCC Class B Peripheral Device (JBP)
- EUT Type: 19" LCD MONITOR
- Model(s): L19T
- LCD Panel: Samsung Electronics (LTM190E1-L01)
- Max. Resolution: 1280 X 1024(@80.0KHz/75Hz)
- Frequency Range: V-Sync: 56Hz – 75Hz , H-Sync: 31KHz – 80KHz
- Cable(s): Shielded D-Sub (with ferrite on both ends)
- Power Cord: Unshielded
- Rule Part(s): FCC Part 15 Subpart B
- Test Procedure(s): ANSI C63.4 (1992)
- Dates of Tests: April 18, 2003 ~ April 26, 2003
- Place of Tests: 254-1,MAEKOK-RI,HOBUP-MYUN,ICHON-SI,KYOUNGKI-DO,467-701,KOREA

## 2.1 INTRODUCTION

The measurement procedure described in American National Standard for Methods of Measurement of Radio-Noise Emissions from Low-Voltage Electrical and Electronic Equipment in the Range of 9kHz to 40GHz (ANSI C63.4-1992) was used in determining radiated and conducted emissions emanating from **IMAGEQUEST CO.,LTD. 19-inch LCD Monitor FCC ID: PJIL19A0D061**

The open area test site and conducted measurement facility used to collect the radiated data are located at the 254-1, MAEKOK-RI, HOBUP-MYUN, ICHON-SI, KYOUNGKI-DO, 467-701, KOREA. The site is constructed in conformance with the requirements of ANSI C63.4 and CISPR Publication 22. Detailed description of test facility was submitted to the Commission and accepted dated July 24, 2000 (Confirmation Number: EA90661)

## 3.1 PRODUCT INFORMATION

### 3.2 Equipment Description

Equipment Under Test (EUT) is the **IMAGEQUEST CO.,Ltd. ( Model : L19T ) 19-inch LCD Monitor**

FCC ID : : **PJIL19A0D061**

Maximum Resolution(s):1280 X 1024(@80.0KHz/75Hz),

Frequency Range(s): H-Sync: 31KHz – 80KHz  
V-Sync: 56Hz – 75 Hz

Pixel Pitch: 0.264mm

Power Supply: AC 100-240V 60/ 50Hz 1.0A

Power Cord: *Unshielded* AC power cord

Port(s)/Input Connector(s): 15-pin D-sub VGA connector

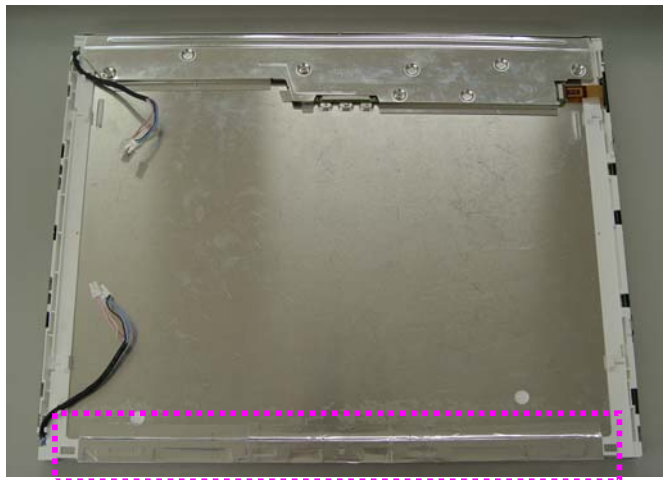
Cable(s): Shielded D-Sub (with ferrite on both ends)

Dimensions (W×H×D): 420x441x185mm(W×H×D)

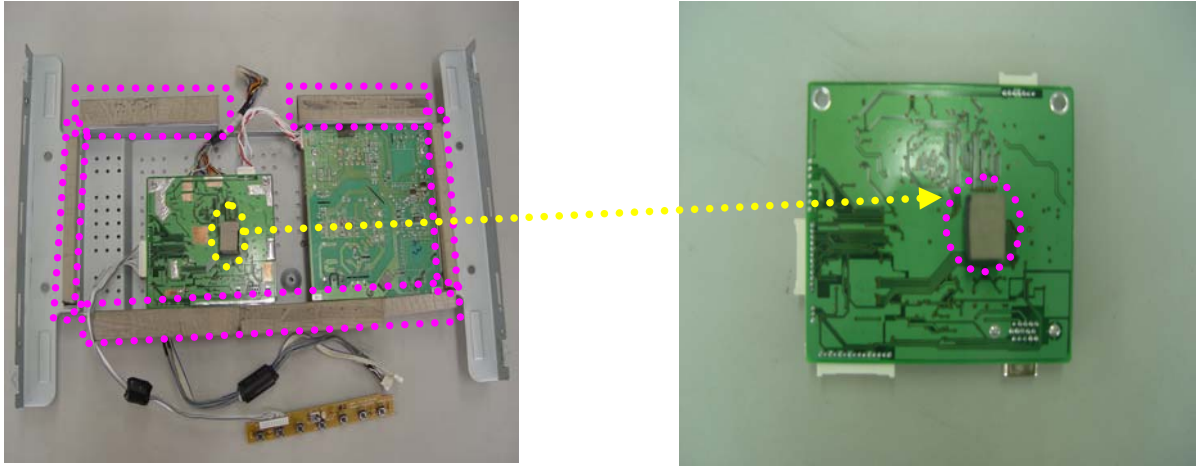
Weight (Net):6.2Kg unpacked, 8.2Kg packed

### EMI Suppression Devices:

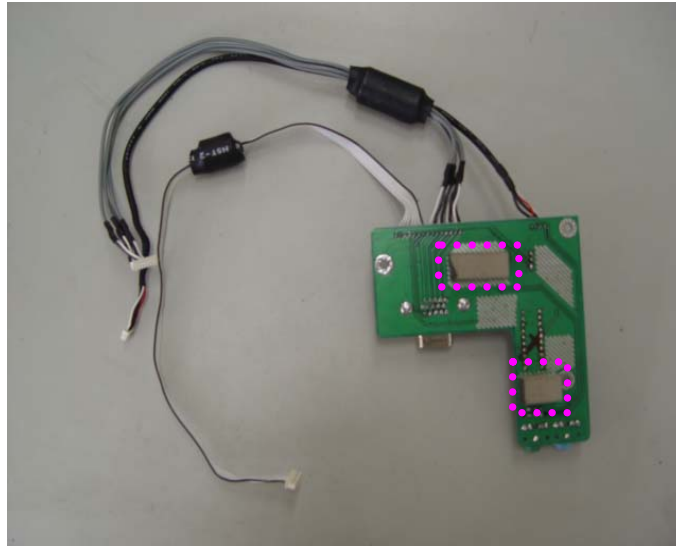
#### 1. Attach a aluminum foil LCD panel Bottom



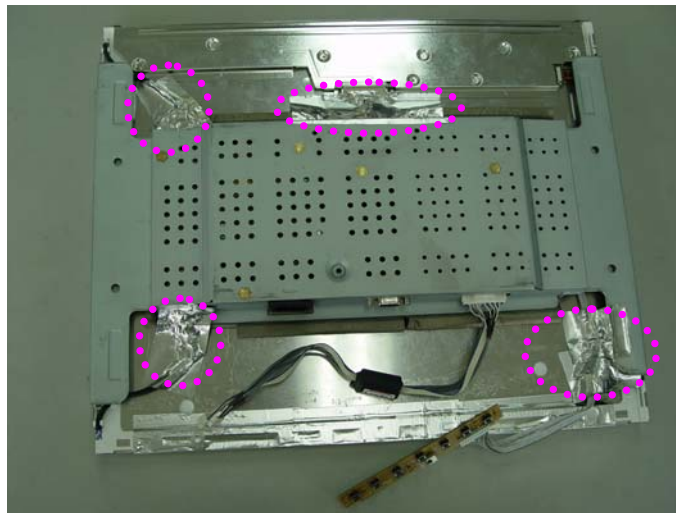
2. Attach a gasket on the Main Board and Main Frame to contact a LCD panel



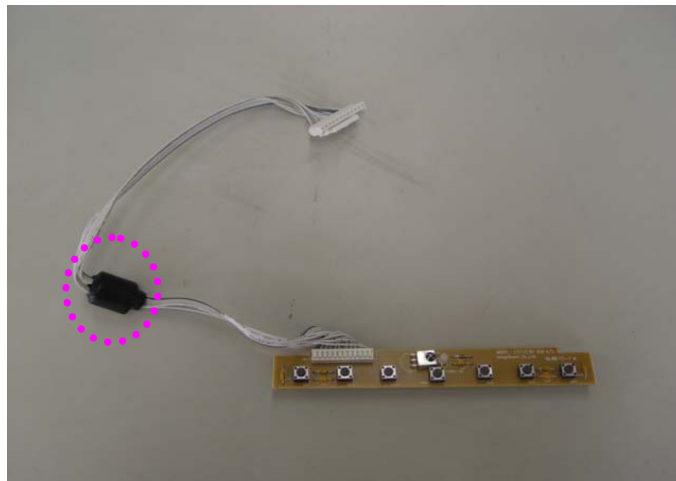
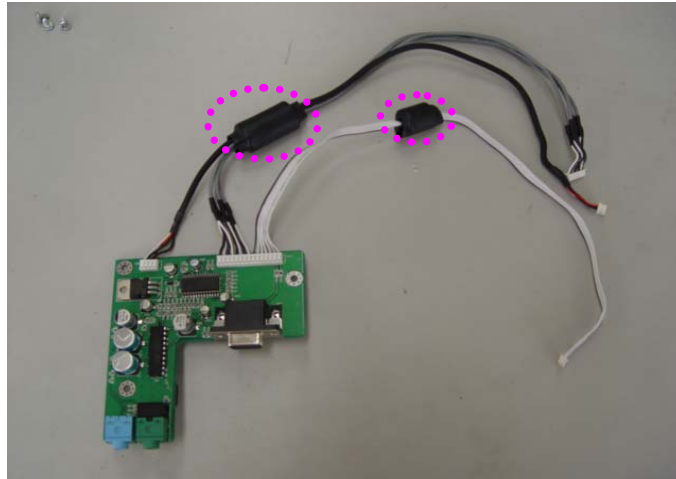
3. Attach a gasket on the Audio PCB to contact a stand



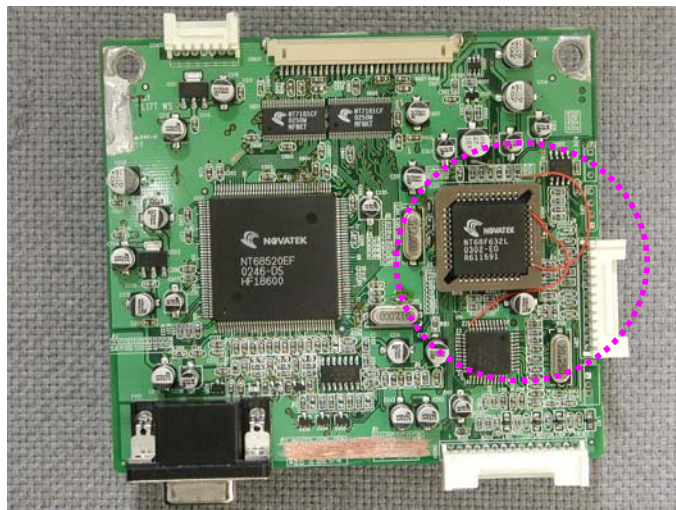
4. Attach a aluminum foil between Main Frame and LCD panel



**5. Apply a ferrite Core to the Audio Cable, Multi cable and OSD board signal cable**



**6. The wires which connected MCU and video decoder chip, will be modified with PCB pattern artwork**



## 4.1 Description of Tests(Conducted)

### 4.2 Powerline Conducted RFI (150kHz- 30MHz)

The power line conducted RFI measurements were performed according to CISPR 22.

The EUT was placed on a non-conducting 1.0 by 1.5 meter table which is 0.8 meters in height and 0.40 meters away from the vertical wall of the shielded enclosure. Power to the EUT is provided through a Rohde & Schwarz 50 Ω / 50 uH Line Impedance Stabilization Network (LISN) and the support equipment through a separate Solar 50 Ω / 50 uH Line- Conducted Test Facility LISN. Sufficient time for the EUT, support equipment, and test equipment were allowed in order for them to warm up to their normal operating condition. The RF output of the LISN was connected to the spectrum analyzer to determine the frequency producing the maximum EME. The spectrum was scanned from 150kHz to 30 MHz. Each maximum EME was remeasured using an EMI receiver. The detector function of the receiver was set to CISPR quasi- peak and average mode with the bandwidth set to 9 kHz. Each emission was maximized consistent with the typical applications by varying the configuration of the test sample. Interface cables were connected to the available interface ports of the test unit. The effect of varying the position of cables was investigated to find the configuration that produces maximum Diagram emission. Excess cable lengths were bundled at the centre with 30- 40cm. in length. The worst-case configuration is noted in the test report and the photographs are attached. Each EME reported was calibrated using the Rohde & Schwarz SMX signal generator and are listed on Table 1. RFI Conducted FCC Class B

RFI CONDUCTED	FCC CLASS B Limits dB(uV/m)	CISPR 22 CLASS B Limits dB(uV/m)	
Freq. Range	FCC Class B Quasi-Peak	CISPR 22 Quasi-Peak	CISPR 22 Average
150kHz - 0.5MHz	48*	66-56**	56-46**
0.5MHz - 5MHz	48	56	46
5MHz - 30MHz	48	60	50
*FCC Class B limits starts from 450kHz			
**Limits decreases linearly with the logarithm of frequency			

Table 1. RFI Conducted Limits



### 4.3 Description of Tests(Radiated)

#### Radiated Emissions

Preliminary measurements were made indoors at 1 meter using broadband antennas, broadband amplifier, and spectrum analyzer to determine the frequency producing the maximum EME. Appropriate precaution was taken to ensure that all EME from the EUT were maximized and investigated. The spectrum was scanned from 30 to 300 MHz using biconical antenna, 300 to 1000 MHz using log- periodic antenna, and above 1 GHz using linearly polarized horn antennas. Final measurements were made outdoors at 10-meter test range using Dipole antennas and EMI receiver. For frequencies above 1 GHz, horn antennas were used. Sufficient time for the EUT, support equipment, and test equipment were allowed in order for them to warm up to their normal operating condition. The EMI receiver detector function was set to CISPR quasi-peak mode and the bandwidth of the receiver was set to 120 kHz. The EUT, support equipment, and interconnecting cables were arranged to the configuration that produces the maximum EME emission found during preliminary scan. The turntable containing the system was rotated; the antenna height was varied 1 to 4 meters and stopped at the azimuth or height producing the maximum emission. Horizontal and vertical antenna polarizations were checked. Each emission was maximized by: varying the mode of operation or resolution; clock or data exchange speed; scrolling H pattern to the EUT and/ or support equipment, and powering the monitor the computer aux AC outlet, if applicable; and changing the polarity of the antenna, whichever determined the worst-case emission.

ITE Radiated Limits			
Frequency (MHz)	FCC Limit @ 3m. Quasi-Peak dB[ $\mu$ V/m]	FCC Limit @ 10m.* Quasi – Peak dB [ $\mu$ V/m]	CISPR Limit @ 10m. Quasi-Peak dB [ $\mu$ V/m]
30-88	40.0	29.5	30.0
88-216	43.5	33.0	30.0
216-230	46.0	35.6	30.0
230-960	46.0	35.6	37.0
960-1000	54.0	43.5	37.0
> 1000	54.0	43.5	No Specified Limit
* Limit extrapolated 20 dB/decade			

Table 2. Radiated Class B limits @ 10-meters

## 5.1 Support Equipment Used

<b>DEVICE TYPE</b>	<b>MANUFACTURER</b>	<b>MODEL NUMBER</b>	<b>FCC ID / DoC</b>	<b>CONNECTED TO</b>
<b>MONITOR (EUT)</b>	<b>IMAGEQUEST CO., LTD.</b>	<b>L19T</b>	<b>PJIL19A0D061</b>	<b>P.C</b>
<b>P.C</b>	<b>H.P</b>	<b>HP Pavilion 730K</b>	<b>DoC</b>	<b>N/A</b>
<b>KEY BOARD</b>	<b>H.P</b>	<b>5181</b>	<b>DoC</b>	<b>P.C</b>
<b>MOUSE</b>	<b>H.P</b>	<b>M-S48a</b>	<b>DoC</b>	<b>P.C</b>
<b>PRINTER</b>	<b>H/P</b>	<b>C4569A</b>	<b>DoC</b>	<b>P.C</b>
<b>SERIAL MOUSE</b>	<b>LOGITECH</b>	<b>M-M28</b>	<b>DoC</b>	<b>P.C</b>
<b>HEADSET</b>	<b>SAMBO COMPUTER</b>	<b>DW-400M</b>	<b>DoC</b>	<b>EUT</b>

## 5.2 Cable Description

	Power Cord Shielded (Y/N)	I/O Cable Shielded (Y/N)	Length (M)
MONITOR(EUT)	N	Y	1.8(P), 1.8(D)
PC(HOST)	N	N/A	1.8(P)
KEY BOARD	N/A	Y	1.5(D)
MOUSE	N/A	Y	1.5(D)
PRINTER	N	Y	1.8(P),1.8(D)
SERIAL MOUSE	N/A	Y	1.5(D)
AUDIO IN	N/A	N	1.5(D)
HEADSET	N/A	N	1.5(D)

The marked "(D)" means the Data Cable and "(P)" means the Power Cable.

## 5.3 Noise Suppression Parts on Cable. (I/O CABLE)

	Ferrite Bead (Y/N)	Location	Metal Hood (Y/N)	Location
MONITOR(EUT)	Y	BOTH END	Y	BOTH END
KEY BOARD	N	N/A	Y	P.C END
MOUSE	Y	P.C END	Y	P.C END
PRINTER	N	N/A	Y	BOTH END
SERIAL MOUSE	N	N/A	Y	EUT END
AUDIO IN	Y	BOTH END	N	N/A
HEADSET	Y	P.C END	N	N/A

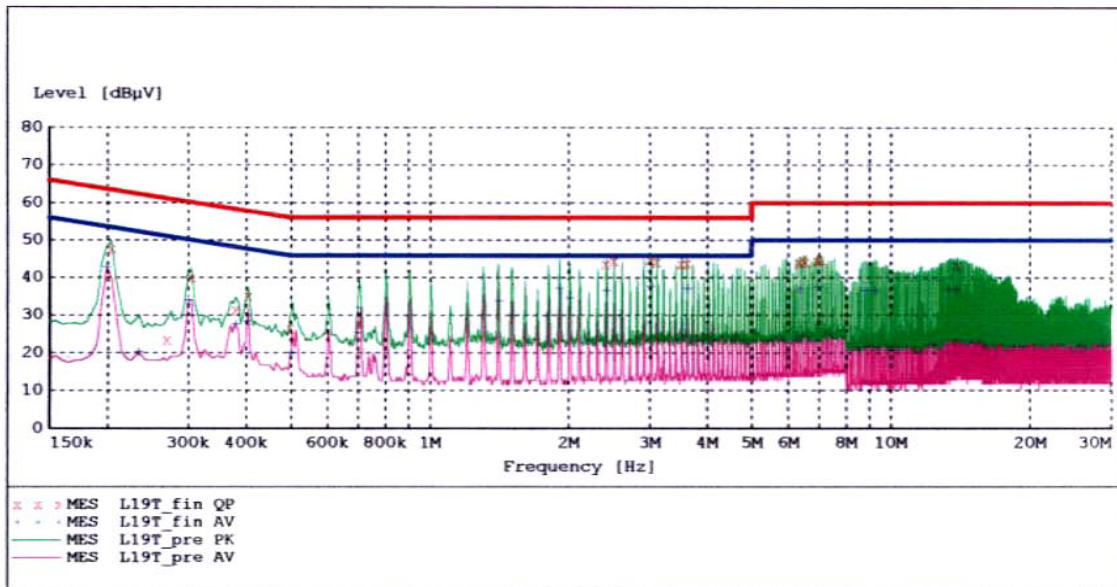
## 6.1 LINE-CONDUCTED TEST DATA

**HYUNDAI C-TECH.**  
**EMC Testing Laboratory**

EUT: L19T  
 Manufacturer: ImageQuest  
 Operating Condition: 1280 X 1024 75Hz  
 Test Site: SHIELD ROOM  
 Operator: BK,HAM  
 Test Specification: CISPR 22 CLASS B  
 Comment: H  
 Start of Test: 4/26/03 / 10:26:54AM

**SCAN TABLE: "CISPR 22 Voltage"**

Short Description:		CISPR 22 Voltage				
Start Frequency	Stop Frequency	Step Width	Detector	Meas. Time	IF Bandw.	Transducer
150.0 kHz	500.0 kHz	5.0 kHz	MaxPeak	10.0 ms	9 kHz	None
			Average			
500.0 kHz	5.0 MHz	5.0 kHz	MaxPeak	10.0 ms	9 kHz	None
			Average			



**MEASUREMENT RESULT: "L19T\_fin QP"**

4/26/03 10:31AM

Frequency MHz	Level dBuV	Transd dB	Limit dBuV	Margin dB	Line	PE
0.205000	47.70	10.1	63	15.7	1	---
0.270000	23.40	10.1	61	37.7	1	---
0.305000	40.10	10.1	60	20.0	1	---
0.380000	31.40	10.1	58	26.8	1	---
0.405000	35.10	10.1	58	22.6	1	---
0.500000	26.40	10.1	56	29.6	1	---
2.420000	43.60	10.3	56	12.4	1	---
2.520000	44.40	10.3	56	11.6	1	---
3.025000	44.70	10.2	56	11.3	1	---
3.125000	44.20	10.2	56	11.8	1	---
3.530000	43.60	10.2	56	12.4	1	---
3.630000	43.90	10.2	56	12.1	1	---
6.355000	44.10	10.3	60	15.9	1	---
6.455000	44.90	10.3	60	15.1	1	---

**MEASUREMENT RESULT: "L19T\_fin QP"**  
(continued)

Frequency MHz	Level dBμV	Transd dB	Limit dBμV	Margin dB	Line	PE
6.555000	44.30	10.3	60	15.7	1	---
6.960000	44.60	10.3	60	15.4	1	---
7.060000	44.90	10.3	60	15.1	1	---
14.020000	43.30	10.5	60	16.7	1	---

**MEASUREMENT RESULT: "L19T\_fin AV"**  
4/26/03 10:31AM

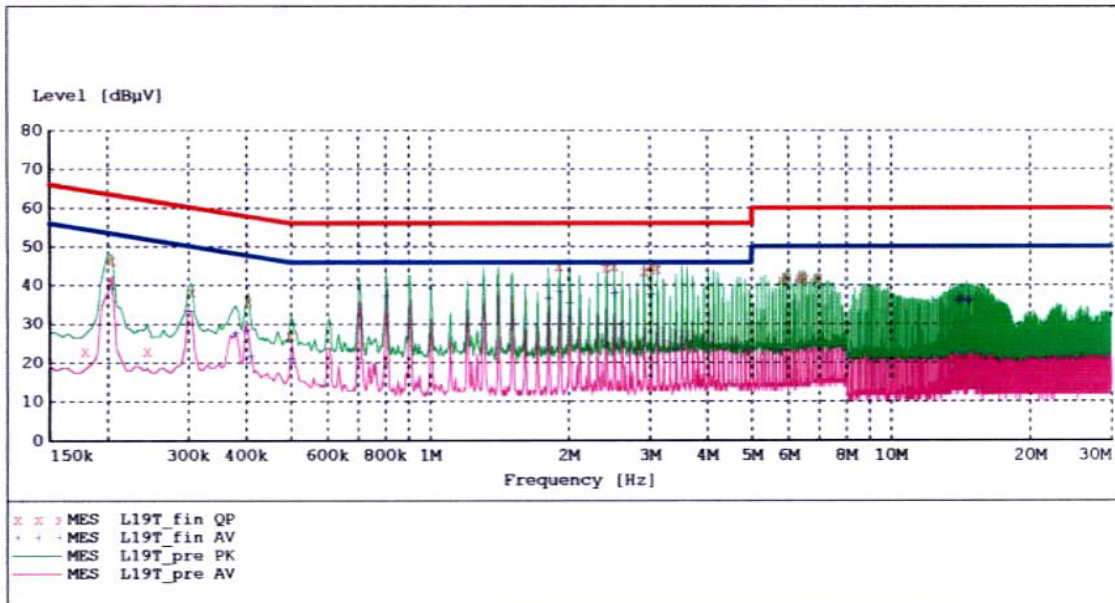
Frequency MHz	Level dBμV	Transd dB	Limit dBμV	Margin dB	Line	PE
0.200000	42.90	10.1	54	10.7	1	---
0.235000	20.50	10.1	52	31.8	1	---
0.300000	34.00	10.1	50	16.3	1	---
0.380000	27.80	10.1	48	20.5	1	---
0.405000	28.50	10.1	48	19.3	1	---
0.500000	20.20	10.1	46	25.8	1	---
1.415000	33.90	10.2	46	12.1	1	---
1.915000	37.20	10.3	46	8.8	1	---
2.020000	34.70	10.3	46	11.3	1	---
2.420000	36.60	10.3	46	9.4	1	---
3.025000	37.80	10.2	46	8.2	1	---
3.630000	37.20	10.2	46	8.8	1	---
6.355000	37.00	10.3	50	13.0	1	---
6.960000	37.60	10.3	50	12.4	1	---
8.775000	36.60	10.4	50	13.4	1	---
9.280000	36.60	10.4	50	13.4	1	---
13.415000	36.90	10.5	50	13.1	1	---
13.920000	36.90	10.5	50	13.1	1	---

**HYUNDAI C-TECH.  
EMC Testing Laboratory**

EUT: L19T  
 Manufacturer: ImageQuest  
 Operating Condition: 1280 X 1024 75Hz  
 Test Site: SHIELD ROOM  
 Operator: BK, HAM  
 Test Specification: CISPR 22 CLASS B  
 Comment: N  
 Start of Test: 4/26/03 / 10:32:06AM

**SCAN TABLE: "CISPR 22 Voltage"**

Short Description:		CISPR 22 Voltage				
Start Frequency	Stop Frequency	Step Width	Detector	Meas. Time	IF Bandw.	Transducer
150.0 kHz	500.0 kHz	5.0 kHz	MaxPeak	10.0 ms	9 kHz	None
			Average			
500.0 kHz	5.0 MHz	5.0 kHz	MaxPeak	10.0 ms	9 kHz	None
			Average			



**MEASUREMENT RESULT: "L19T\_fin QP"**

4/26/03 10:36AM

Frequency MHz	Level dBµV	Transd dB	Limit dBµV	Margin dB	Line	PE
0.180000	23.10	10.1	65	41.3	1	---
0.205000	46.50	10.1	63	16.9	1	---
0.245000	23.10	10.1	62	38.8	1	---
0.305000	38.30	10.1	60	21.8	1	---
0.405000	35.80	10.1	58	22.0	1	---
0.500000	27.00	10.1	56	29.0	1	---
1.915000	44.90	10.3	56	11.1	1	---
2.420000	44.40	10.3	56	11.6	1	---
2.520000	44.90	10.3	56	11.1	1	---
2.925000	43.60	10.2	56	12.4	1	---
3.025000	44.90	10.2	56	11.1	1	---
3.125000	44.20	10.2	56	11.8	1	---
5.850000	41.50	10.3	60	18.5	1	---
5.950000	42.20	10.3	60	17.8	1	---

**MEASUREMENT RESULT: "L19T\_fin QP"**  
 (continued)

Frequency MHz	Level dBµV	Transd dB	Limit dBµV	Margin dB	Line	PE
6.355000	42.00	10.3	60	18.0	1	---
6.455000	42.60	10.3	60	17.4	1	---
6.555000	41.70	10.3	60	18.3	1	---
6.960000	41.70	10.3	60	18.3	1	---

**MEASUREMENT RESULT: "L19T\_fin AV"**  
 4/26/03 10:36AM

Frequency MHz	Level dBµV	Transd dB	Limit dBµV	Margin dB	Line	PE
0.205000	39.10	10.1	53	14.3	1	---
0.300000	33.50	10.1	50	16.7	1	---
0.380000	27.90	10.1	48	20.4	1	---
0.400000	28.40	10.1	48	19.4	1	---
0.410000	21.80	10.1	48	25.8	1	---
0.500000	21.00	10.1	46	25.0	1	---
0.805000	37.30	10.2	46	8.7	1	---
1.815000	36.60	10.3	46	9.4	1	---
1.915000	38.60	10.3	46	7.4	1	---
2.020000	35.50	10.3	46	10.5	1	---
2.520000	38.00	10.3	46	8.0	1	---
3.025000	37.70	10.2	46	8.3	1	---
14.020000	36.10	10.5	50	13.9	1	---
14.120000	36.60	10.5	50	13.4	1	---
14.220000	36.60	10.5	50	13.4	1	---
14.625000	36.00	10.5	50	14.0	1	---
14.725000	36.30	10.5	50	13.7	1	---
14.825000	36.10	10.5	50	13.9	1	---

**NOTES:**

- 1. All modes of operation were investigated and the worst-case emissions are reported.**
- 2. The CISPR RFI conducted limits are listed on Table 1(Page 8).**
- 3. Line A = Phase Line B = Neutral**

---

\*\* Measurements using CISPR quasi-peak mode.



## 7.1 RADIATED TEST DATA

Frequency MHz	Reading dBuV	Ant. Factor dB	Cable Loss dB	ANT POL (H/V)	Total dBuV/m	Limit dBuV/m	Margin dB
55.0	13.95	9.40	1.7	V	25.0	30	-5.0
61.7	16.80	7.53	1.8	V	26.1	30	-3.9
94.8	13.74	9.32	2.2	V	25.2	30	-4.8
200.8	6.00	16.26	3.2	V	25.5	30	-4.5
225.1	4.66	16.99	3.4	H	25.1	30	-4.9
443.5	5.76	18.21	4.8	V	28.8	37	-8.2
499.5	6.01	19.10	5.1	V	30.2	37	-6.8
616.8	3.89	21.63	5.7	V	31.2	37	-5.8
664.0	3.64	22.66	5.9	V	32.2	37	-4.8

Radiated Measurements at 10-meters.  
**1280 X 1024 (@80.0KHz/ 75Hz)**

NOTES:

1. All modes of operation were investigated, and the worst-case emissions are reported.
2. The radiated limits are listed on Table 2 (Page 9).

\*\* AFCL = Antenna Factor (Roberts dipole) and Cable Loss .

\*\*\* Measurements using CISPR quasi-peak mode. Above 1GHz, peak detector function mode is used using a resolution bandwidth of 1MHz and a video bandwidth of 1MHz. The peak level complies with the average limit. Peak mode is used with linearly polarized horn antenna and low-loss microwave cable.

## 8.1 Sample Calculations

$$\text{dB } \square = 20 \log_{10} (\text{mV/m})$$

### 8.2 Example 1:

@ 15.2 MHz

Class B limit = 250  $\mu\text{V}$  = 47.96 dB $\mu\text{V}$   
Reading = 33.4 dB $\mu\text{V}$  (calibrated level)

**Margin** = 33.4 - 47.96 = - 14.56  
= **14.6 dB below limit**

### 8.3 Example 2:

@ 55.7 MHz

Class B limit = 100  $\mu\text{V/m}$  = 40.0 dB $\mu\text{V/m}$   
Reading = 21.3 dB $\mu\text{V/m}$  (calibrated level)  
Antenna Factor + Cable Loss = 11.1 dB  
Total = 32.4 dB $\mu\text{V/m}$

**Margin** = 32.4 - 40.0 = - 7.6  
= **7.6 dB below limit**

## 9.1 Test Equipment

<u>Type</u>	<u>Manufacture</u>	<u>Model Number</u>	<u>CAL Date</u>
EMI Test Receiver	Rohde & Schwarz	ESH3	2002.07.16
EMI Test Receiver	Rohde & Schwarz	ESVP	2002.10.01
EMI Test Receiver	Rohde & Schwarz	ESI40	2002.11.16
EMI Test Receiver	Rohde & Schwarz	ESVS30	2002.07.16
LISN	EMCO	3816/2	2002.11.29
LISN	EMCO	3816/2	2002.08.22
Amplifier	Hewlett-Packard	8447E	2002.08.23
Absorbing Clamp	Rohde & Schwarz	MDS-21	2003.04.24
Dipole Antennas	Rohde & Schwarz	VHAP	2002.07.16
Dipole Antennas	Rohde & Schwarz	UHAP	2002.07.16
Biconical Antenna	Rohde & Schwarz	VHA9103	2002.07.12
Log-Periodic Antenna	Rohde & Schwarz	UHALP9107	2002.07.12
Antenna Position Tower	EMCO	1051-12	N/A
Turn Table	EMCO	1060-06	N/A
Power Analyzer	Voltech	PM 3300	2003.2.15
Reference Network	ImpedanceVoltech	IEC 555	N/A
AC Power Source	PACIFIC	Magnetic Module	N/A
AC Power Source	PACIFIC	360AMX	2002.11.25
Controller	HD GmbH	HD 100	N/A
EMI in Motion	HD GmbH	KMS 560	N/A

## 10.1 Test Software Used

The EUT exercise program used during radiated and conducted testing was designed to exercise the various system components in a manner similar to a typical use. The software, contained on a 3-1/2 inch disc, was inserted into drive A and is auto starting on power-up. Once loaded, the program sequentially exercises each system component in turn. The sequence used is : (1) Display test, (2) RS 232 test (3) Key board test, (4) Printer test, (5) FDD test, (6) HDD test. The complete cycle takes about 20 seconds and is repeated continuously. As the keyboard and mouse are strictly input devices, no data is transmitted to them during test. They are however, continuously scanned for data input activity. The video resolution modes setup and change program was used during the radiated and conducted emission testing.

NOTE: This is a sample of the basic program used during the test. However, during testing, a different software program may be used; whichever determines the worst-case condition. In addition, the program used also depends on the number and type of devices being tested.

Actual program used is the "H" pattern in Notepad under Windows environment. All resolution modes (1280×1024, 1152×864, 1024×768, 832×624, 800×600, 640×480, 720×400 ) were investigated and tested

## **11.1 Conclusion**

The data collected shows that the IMAGEQUEST CO., LTD. 19-inch LCD Monitor **FCC ID: PJIL19A0D061** complies with §15.107 and §15.109 of the FCC Rules.