



JULY 15, 2004
Federal Communications Commission
Equipment Approval Services
7435 Oakland Mills Road
Columbia, MD 21046

SUBJECT : Hyundai ImageQuest Co., Ltd.
FCC ID: PJIL17A0D083
Class II permissive change
Orig. Grant Date: June 17, 2003

Gentlemen:

Transmitted herewith, on behalf of Hyundai ImageQuest Co., Ltd. is an application for a Class II Permissive Change Certification of the following 17-inch LCD Monitor:


FCC ID : PJIL17A0D083
Model/Type : L17T/L17A0D083

The device is identical to the previously certified monitor except for the following:

1. Original LCD Panel
(Manufacture : SAMSUNG Electronics Model No.: LTM170EU-L01)
Alternate LCD Panel
(**Manufacture : SAMSUNG Electronics Model No.: LTM170EU-L11**)

Attached is the applicant's Cover Letter, External/Internal Photos, Test Set-Up Photos, FCC ID & Label Location, User Manual, Block Diagram and Test Report.

Should you have any questions or comments concerning the above, please contact the undersigned.



KI SOO KIM
EMC MAMAGER

cc: Mr. HEE JUNG KIM ----- R & D CENTER / MANAGER

• Solution for EMI

We, Hyundai ImageQuest Co., Ltd. , announce that all modifications will be incorporated into each unit sold in the U.S.

- 1. Attach a gasket on the Main Board and Main Frame to contact a LCD panel**
- 2. Attach a gasket on the Audio PCB to contact a stand**
- 3. Attach a gasket and aluminum foil between Main Frame and LCD panel**
- 4. Apply a ferrite Core to the Audio Cable, Multi cable and OSD board signal cable**

(Please refer to next page of the photographs for Solution for EMI)

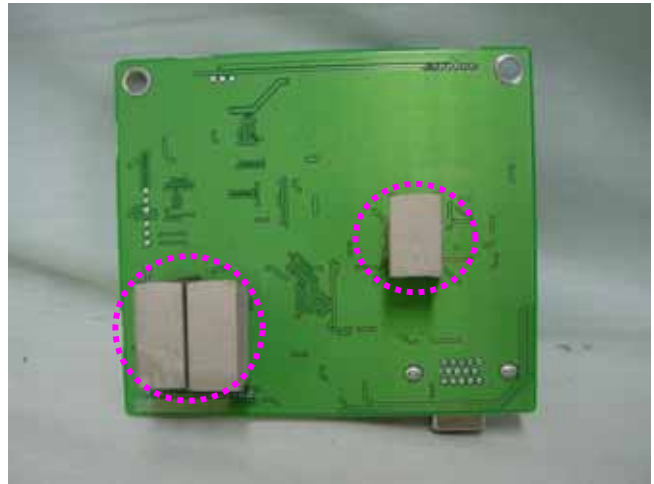
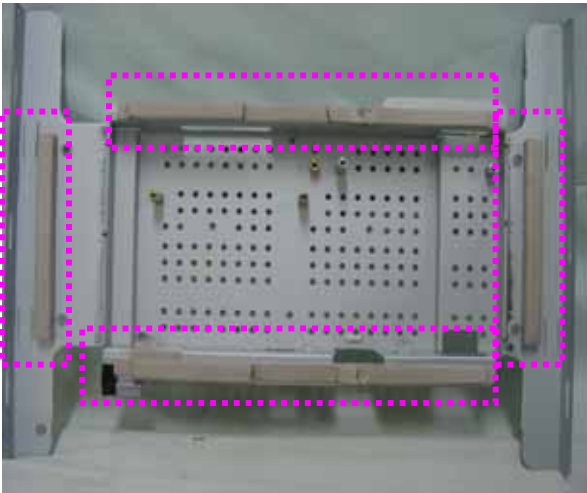
HYUNDAI IMAGEQUEST CO., LTD.

2004. 07. 15.

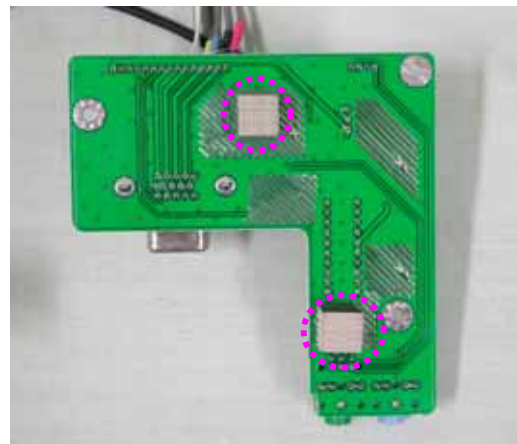
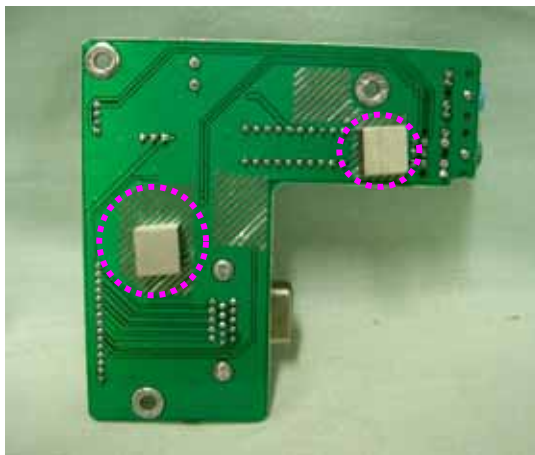
**R & D CENTER / MANAGER
HEE JUNG KIM**



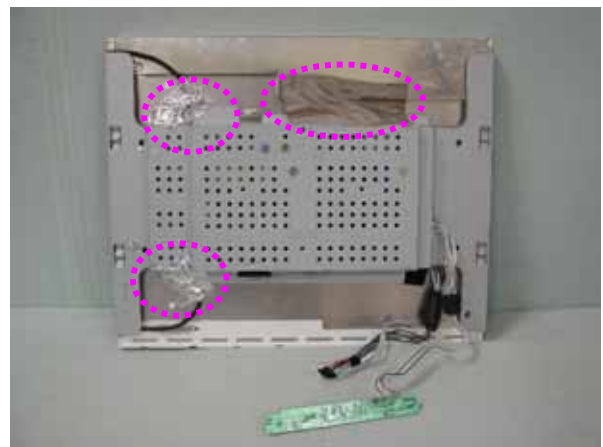
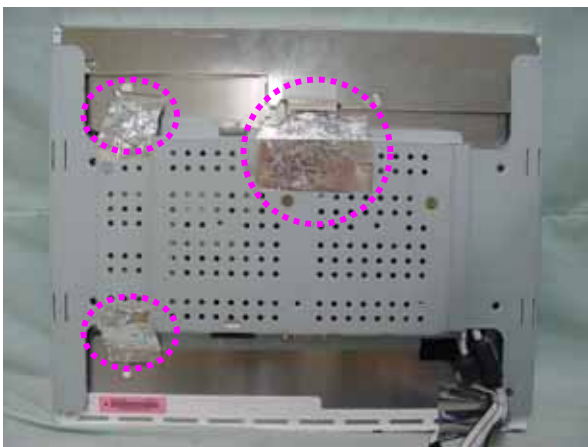
1. Attach a gasket on the Main Board and Main Frame to contact a LCD panel



2. Attach a gasket on the Audio PCB to contact a stand



3. Attach a gasket and aluminum foil between Main Frame and LCD panel



4. Apply a ferrite Core to the Audio Cable, Multi cable and OSD board signal cable

