



FCC ID : PJIL17A0D083

---

MAY 29, 2003  
Federal Communications Commission  
Equipment Approval Services  
7435 Oakland Mills Road  
Columbia, MD 21046

**SUBJECT : ImageQuest Co., Ltd.**  
**FCC ID: PJIL17A0D083**  
**FCC Part 15 Subpart B Certification**


Gentlemen:

Transmitted herewith, on behalf of ImageQuest Co., Ltd. is an application for a FCC Part 15 Subpart B Certification of the following 17-inch LCD Monitor:

**FCC ID : PJIL17A0D083**  
**Model : L17A0D083**

Attached is the applicant's Cover Letter, External/Internal Photos, Test Set-Up Photos, FCC ID & Label Location, User Manual, Block & Circuit Diagram and Test Report.

Should you have any questions or comments concerning the above, please contact the undersigned.

  
Ki Soo Kim

KI SOO KIM  
EMC MAMAGER

cc: Mr. HEE JUNG KIM ----- R & D CENTER / MANAGER

---

---

## • Solution for EMI

**We, ImageQuest CO.,LTD. , announce that all modifications will be incorporated into each unit sold in the U.S.**

1. Attach a aluminum foil LCD panel Bottom
2. Attach a gasket on the Main Board and Main Frame to contact a LCD panel
3. Attach a gasket on the Audio PCB to contact a stand
4. Attach a aluminum foil between Main Frame and LCD panel
5. Apply a ferrite Core to the Audio Cable, Multi cable and OSD board signal cable
6. The wires which connected MCU and video decoder chip, will be modified with PCB pattern artwork

(Please refer to next page of the photographs for Solution for EMI)

**ImageQuest CO.,LTD.**

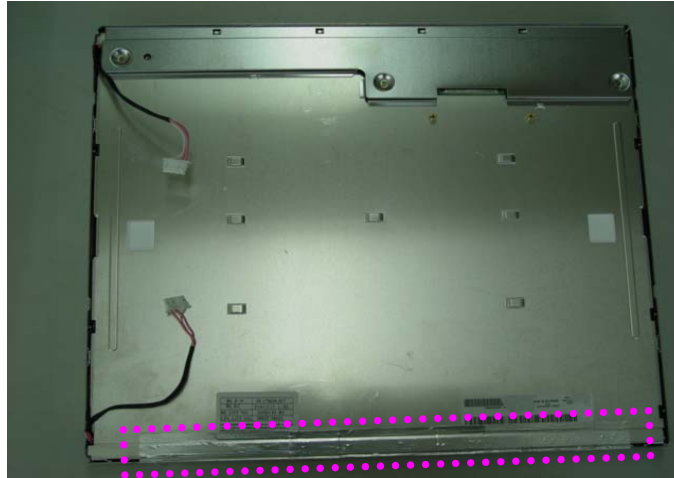
**2003.6.3**

**R & D CENTER / MANAGER  
HEE JUNG KIM**

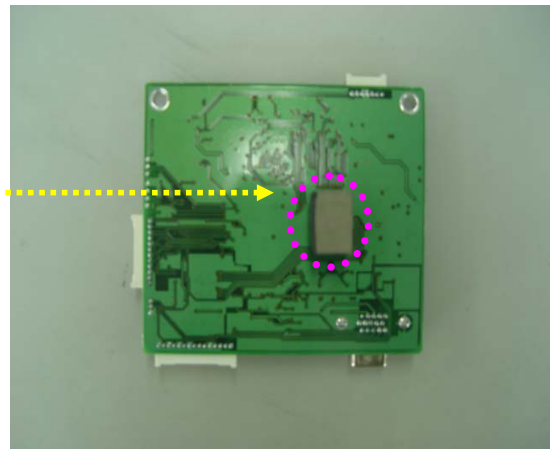
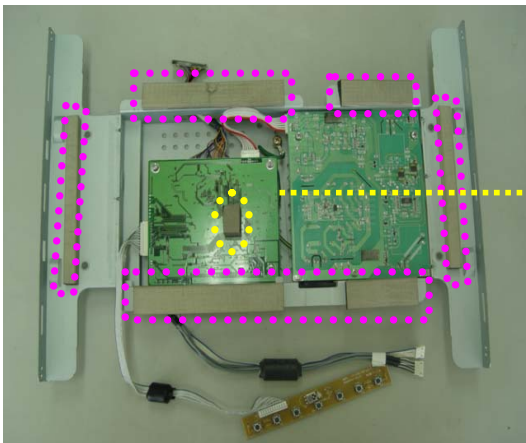


---

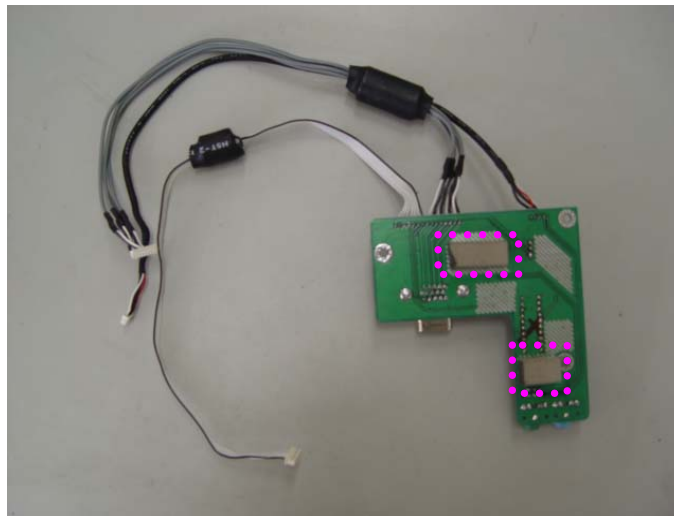
**1. Attach a aluminum foil LCD panel Bottom**



**2. Attach a gasket on the Main Board and Main Frame to contact a LCD panel**

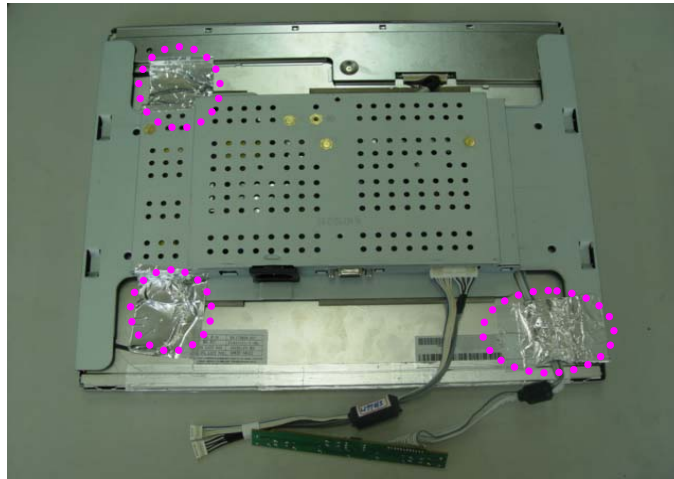


**3. Attach a gasket on the Audio PCB to contact a stand**

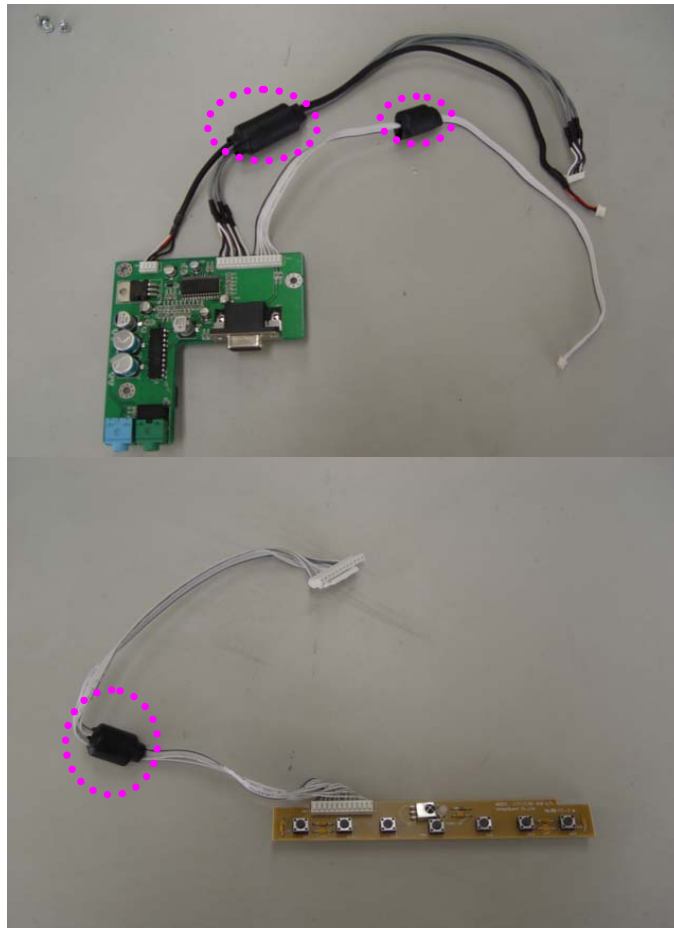


---

**4. Attach a aluminum foil between Main Frame and LCD panel**



5. Apply a ferrite Core to the Audio Cable, Multi cable and OSD board signal cable



**6. The wires which connected MCU and video decoder chip, will be modified with PCB pattern artwork**

