



FCC ID : PJIET1947L

NOVEMBER 25, 2003
Federal Communications Commission
Equipment Approval Services
7435 Oakland Mills Road
Columbia, MD 21046

**SUBJECT : ImageQuest Co., Ltd.
FCC ID: PJIET1947L
FCC Part 15 Subpart B Certification**

Gentlemen:

Transmitted herewith, on behalf of ImageQuest Co., Ltd. is an application for a FCC Part 15 Subpart B Certification of the following 19-inch LCD Kiosk Touch Screen Monitor (Serial Interface Type) :

**FCC ID : PJIET1947L
Model : ET1947L-8SWA-1**

Attached is the applicant's Cover Letter, External/Internal Photos, Test Set-Up Photos, FCC ID & Label Location, User Manual, Block Diagram and Test Report.

Should you have any questions or comments concerning the above, please contact the undersigned.

Ki Soo Kim

KI SOO KIM
EMC MAMAGER

cc: Mr. HEE JUNG KIM ----- R & D CENTER / MANAGER

• Solution for EMI

We, ImageQuest CO.,LTD. , announce that all modifications will be incorporated into each unit sold in the U.S.

1. Attach a gasket on the LCD panel to contact the Main Frame
2. Attach aluminum foil between Main Frame and LCD panel

(Please refer to next page of the photographs for Solution for EMI)

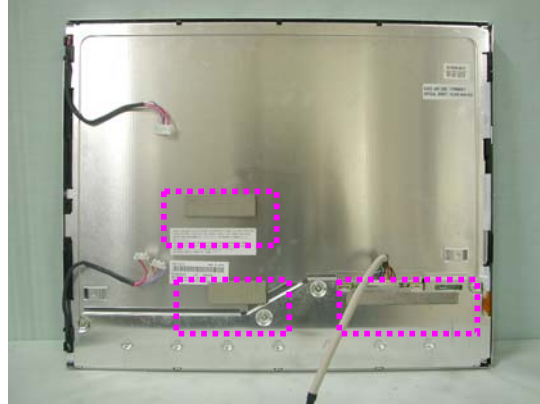
ImageQuest CO.,LTD.

2003. 11. 25

**R & D CENTER / MANAGER
HEE JUNG KIM**



1. Attach a gasket on the LCD panel to contact the Main Frame



2. Attach aluminum foil between Main Frame and LCD panel

