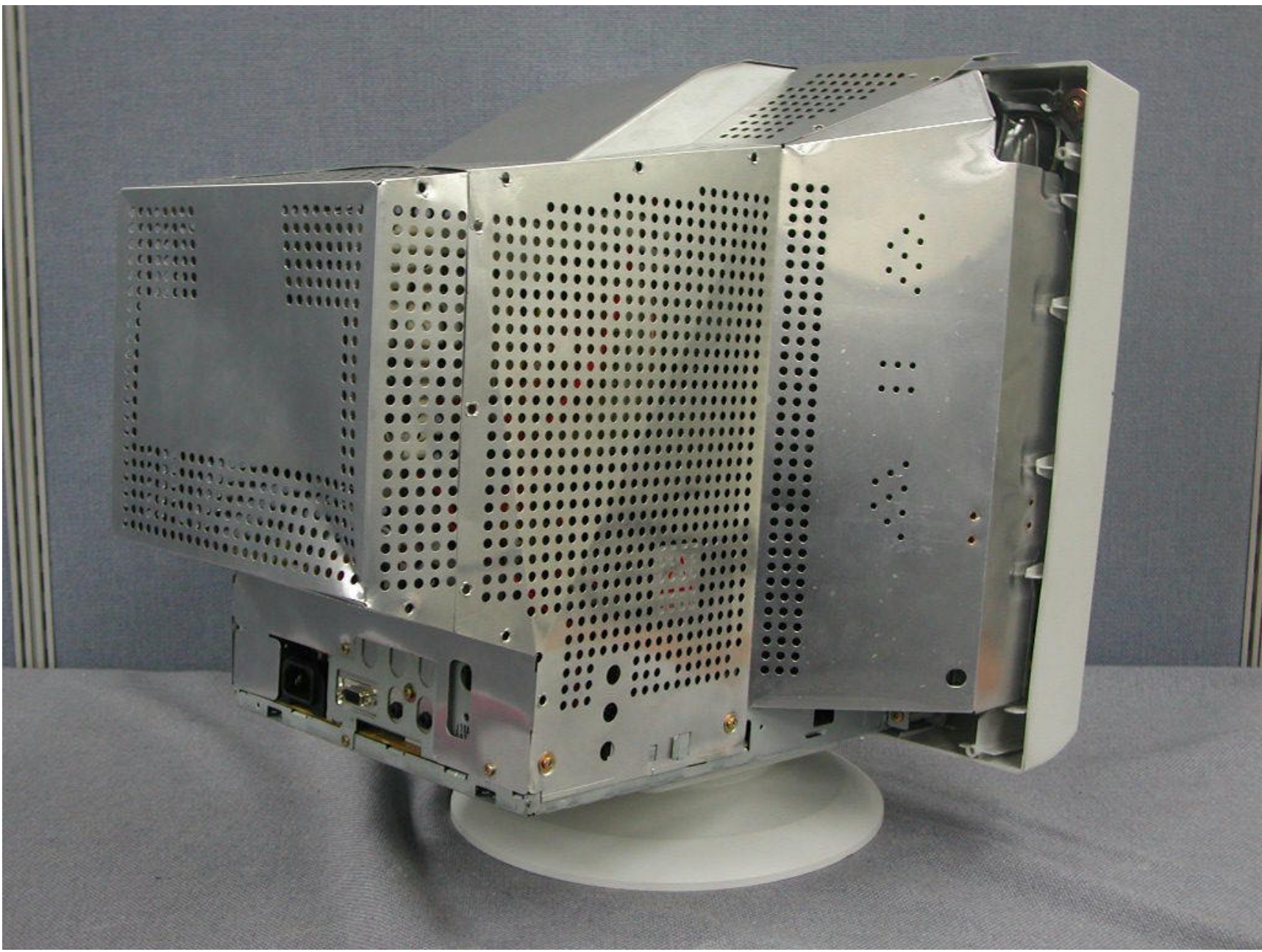




HYUNDAI CALIBRATION & CERTIFICATION TECHNOLOGIES CO., LTD.

SAN 136-1, AMI-RI, BUBAL-EUP, ICHEON-SI, KYOUNGKI-DO, 467-701, KOREA

TEL : +82 31 639 8518 FAX : +82 31 639 8525



HYUNDAI CALIBRATION & CERTIFICATION TECHNOLOGIES CO., LTD.

SAN 136-1, AMI-RI, BUBAL-EUP, ICHEON-SI, KYOUNGKI-DO, 467-701, KOREA

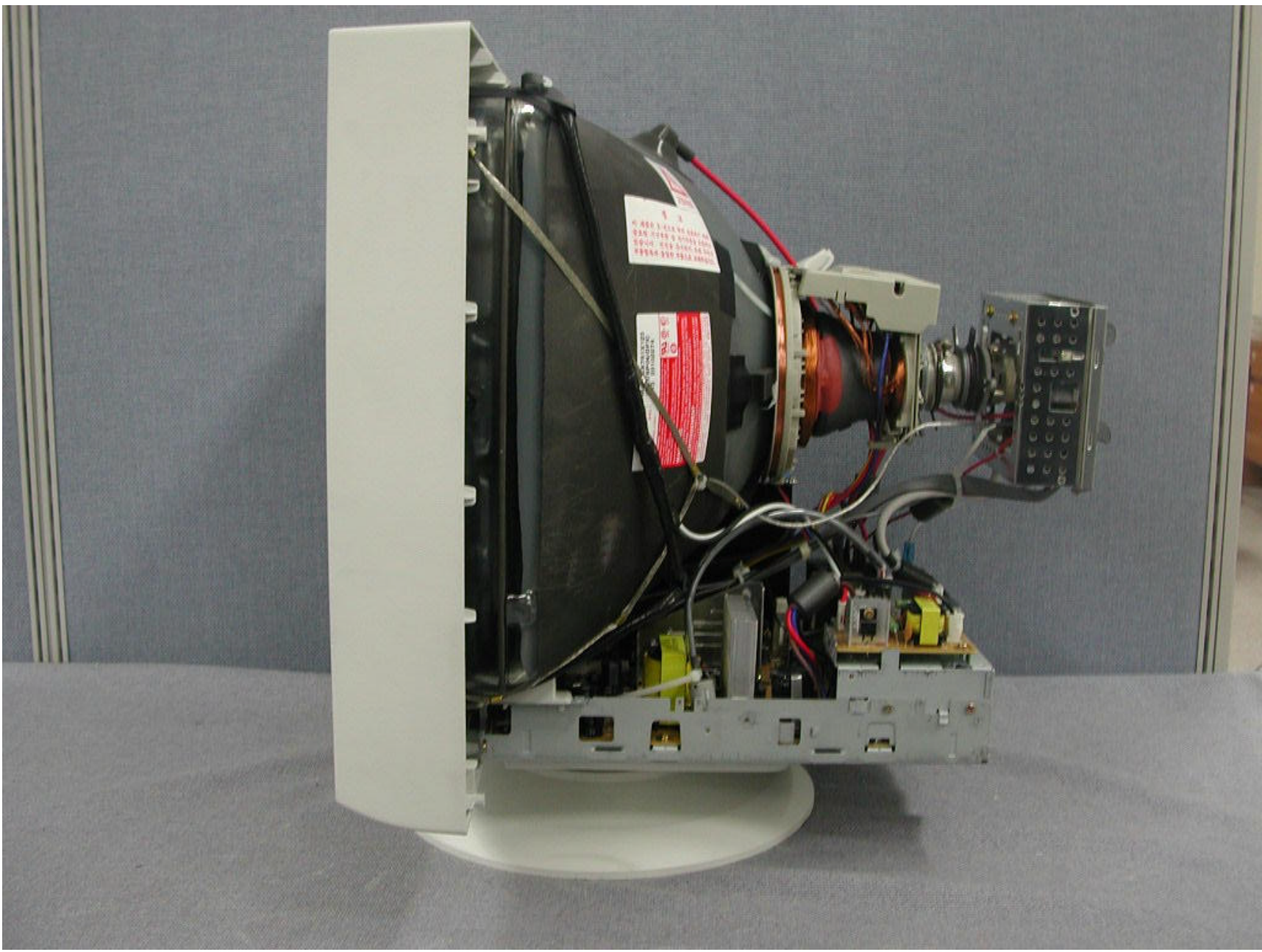
TEL : +82 31 639 8518 FAX : +82 31 639 8525



HYUNDAI CALIBRATION & CERTIFICATION TECHNOLOGIES CO., LTD.

SAN 136-1, AMI-RI, BUBAL-EUP, ICHEON-SI, KYOUNGKI-DO, 467-701, KOREA

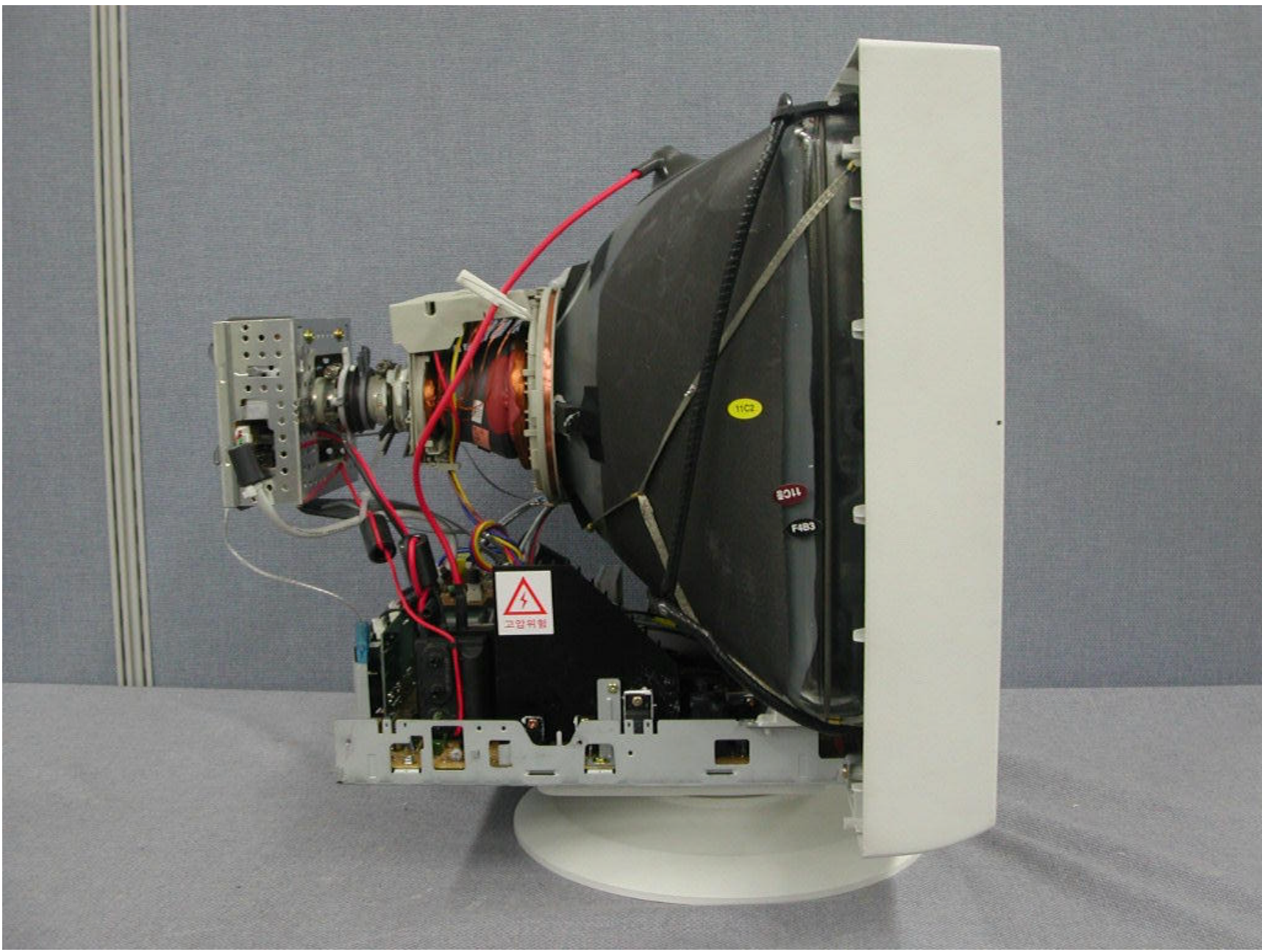
TEL : +82 31 639 8518 FAX : +82 31 639 8525



HYUNDAI CALIBRATION & CERTIFICATION TECHNOLOGIES CO., LTD.

SAN 136-1, AMI-RI, BUBAL-EUP, ICHEON-SI, KYOUNGKI-DO, 467-701, KOREA

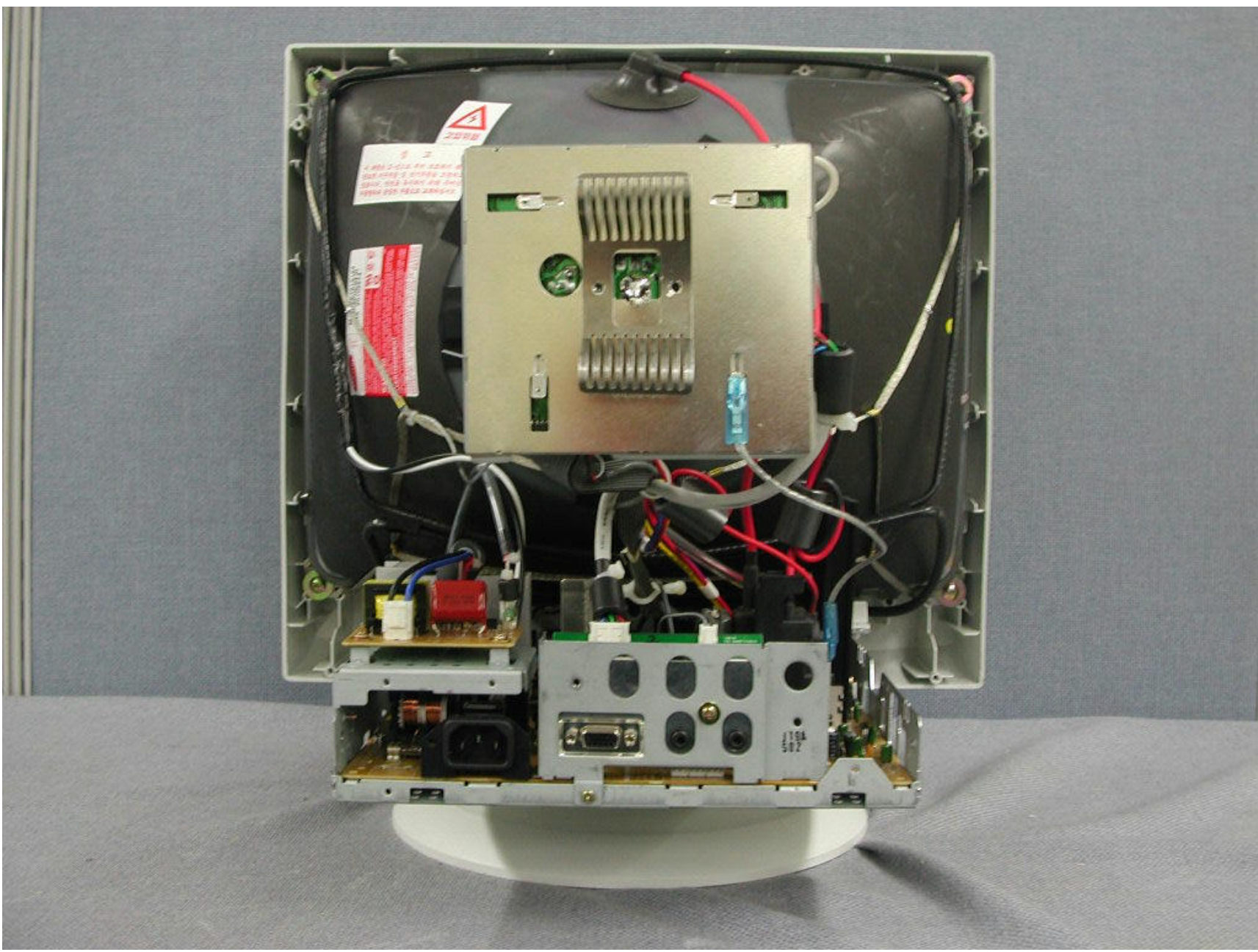
TEL : +82 31 639 8518 FAX : +82 31 639 8525

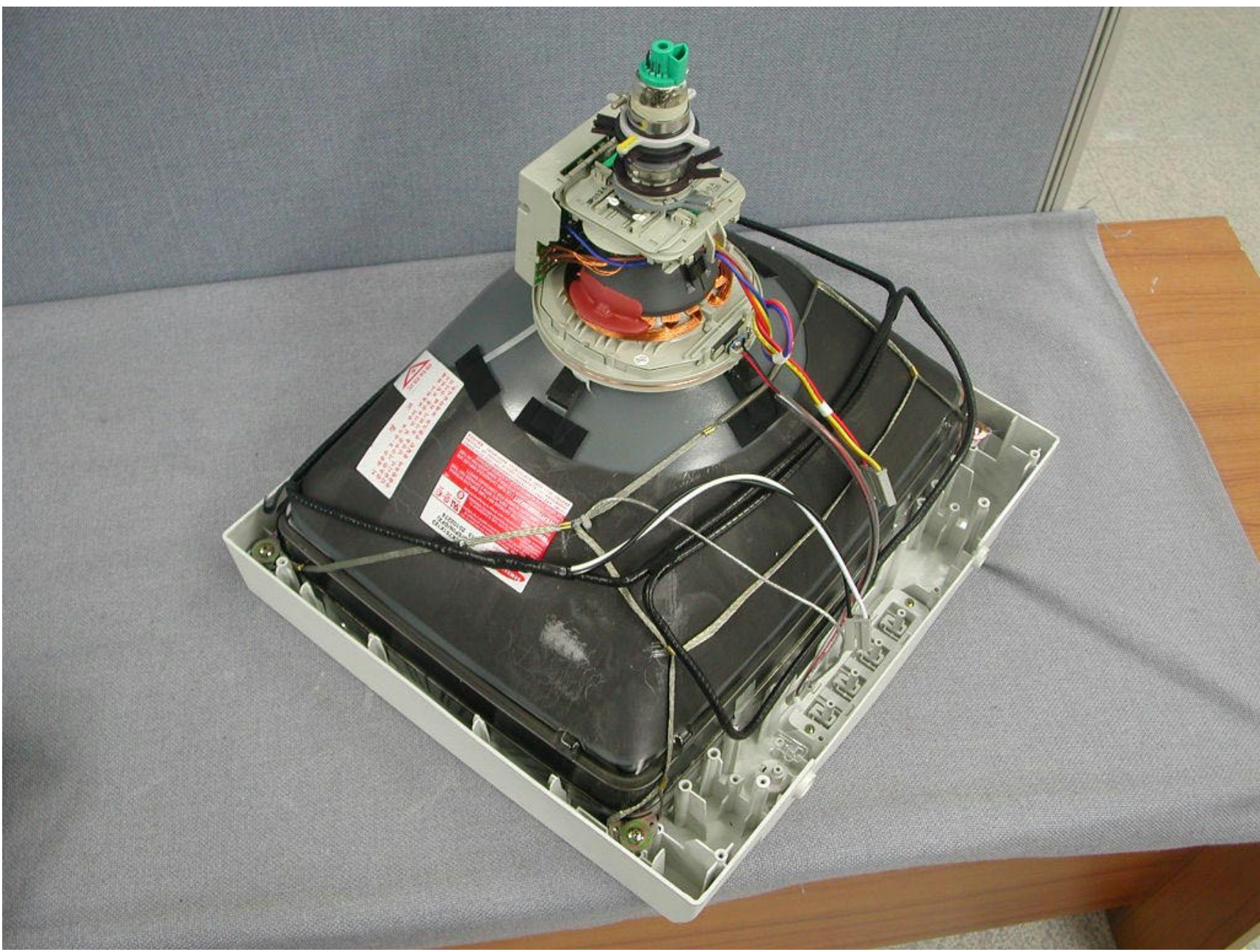


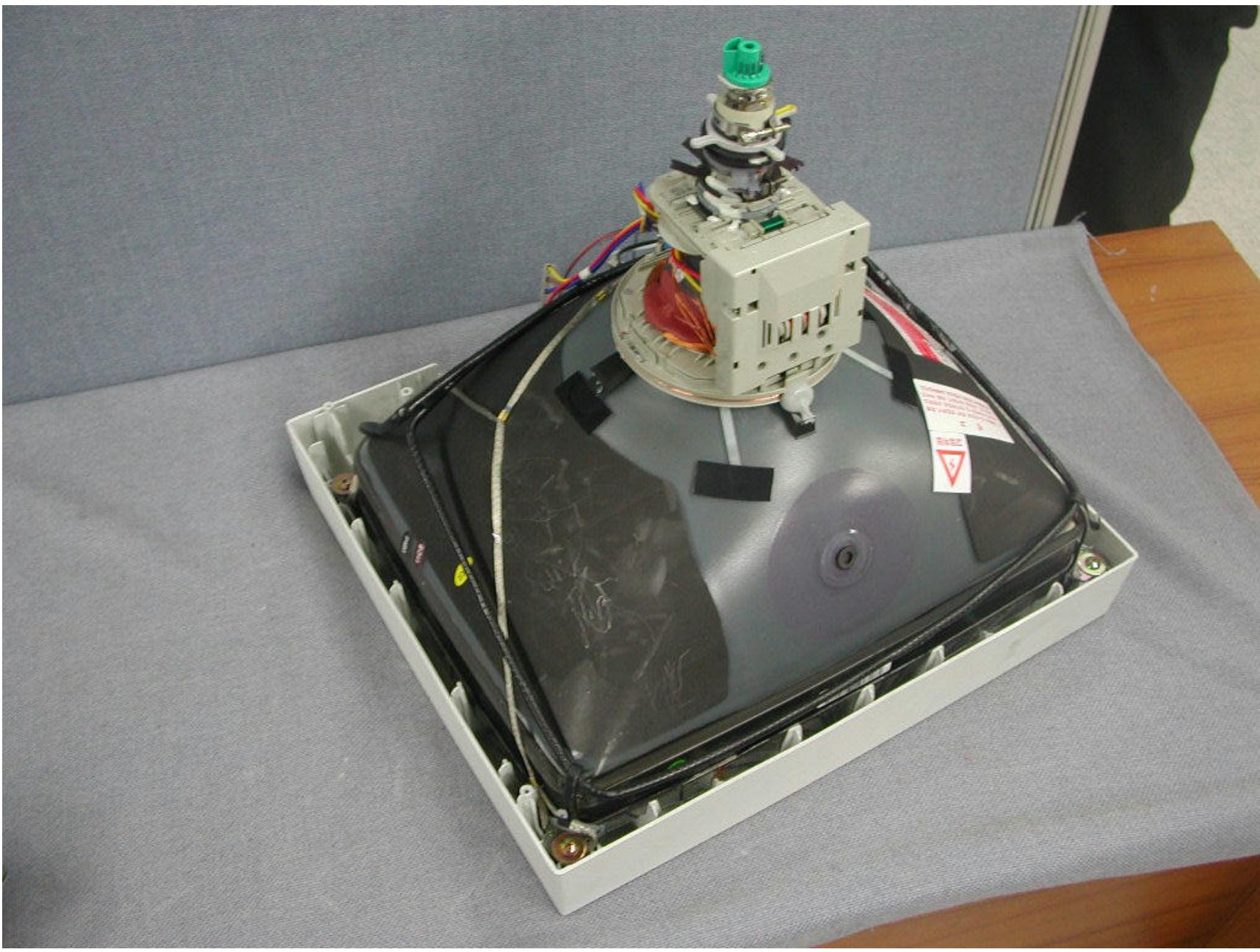
HYUNDAI CALIBRATION & CERTIFICATION TECHNOLOGIES CO., LTD.

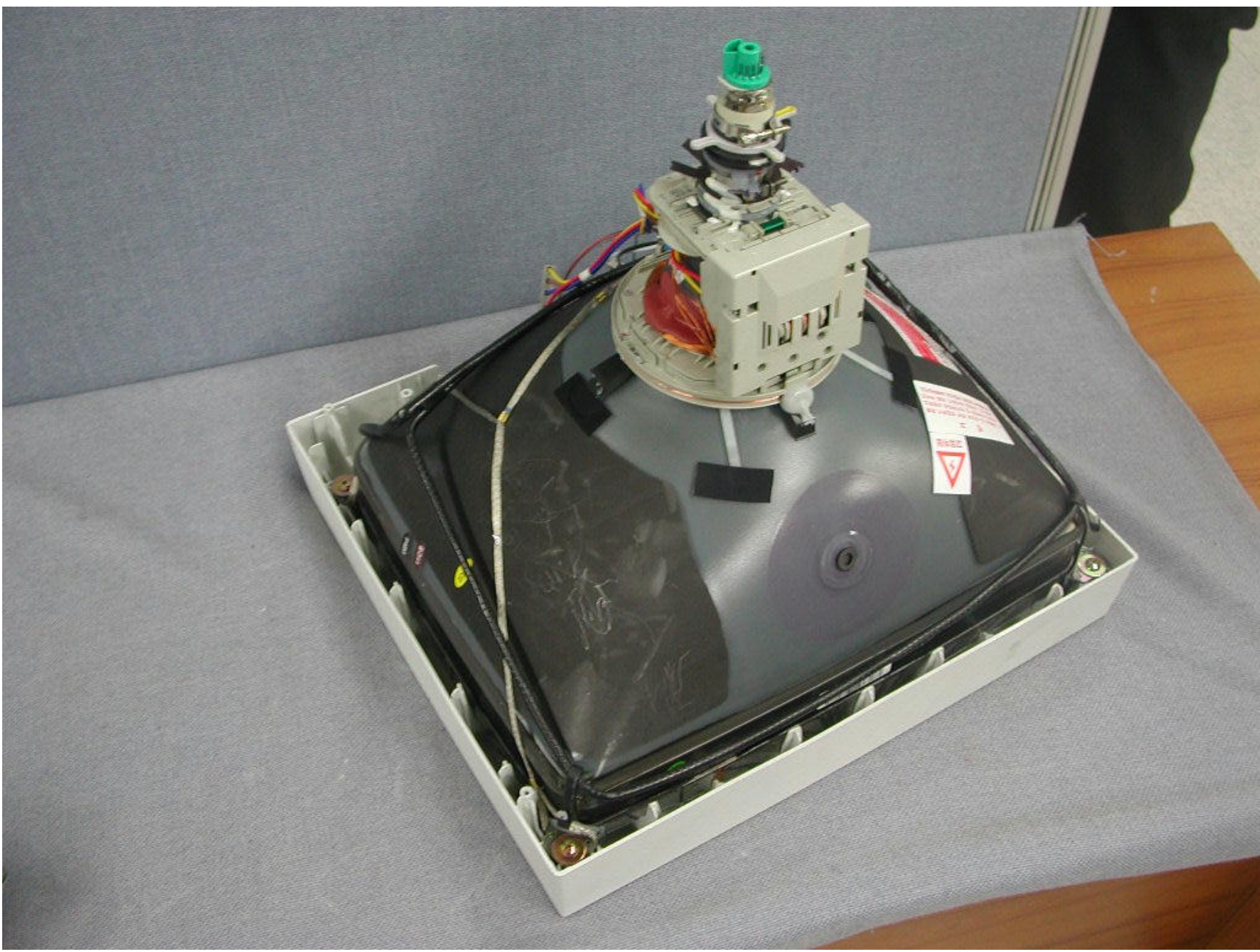
SAN 136-1, AMI-RI, BUBAL-EUP, ICHEON-SI, KYOUNGKI-DO, 467-701, KOREA

TEL : +82 31 639 8518 FAX : +82 31 639 8525









SAMSUNG TYPE **M46QCK761X123**
 型号 **(TCO/SPIN/DFX)**
 序号S- **A13 20102274**

MADE BY SAMSUNG, KOREA

X-RAY WARNING : When picture tubes are operated at very high voltage and when personal exposure is prolonged at close range, special shielding precautions against x-ray radiation may be needed.

CAUTION : HIGH-VACUUM PICTURE TUBE IS DANGEROUS TO HANDLE. REFER SERVICING TO QUALIFIED SERVICE PERSONNEL.

Eigensichere Kathodenstrahlröhre nach Anlage III Röntgenverordnung. **HS**

WARNING : THIS CATHODE RAY TUBE EMPLOYS INTEGRAL IMPLOSION PROTECTION. REPLACE WITH A CATHODE RAY TUBE OF THE SAME TYPE NUMBER FOR CONTINUED SAFETY.

AVERTISSEMENT : CE TUBE CATHODIQUE EMPLOIE UNE PROTECTION D'IMPLOSION INTÉGRALE. REMPLACER PAR UN TUBE DE MÊME TYPE NUMÉRO POUR LA SÛRETÉ CONTINUE.

X射线警告：显象管在高电压下工作时产生的辐射对长期暴露在其周围的人体有害，因此必须采取特殊的X射线屏蔽防护措施。小心：高压真空管搬动时应咨询专业人员，以免发生危险。注意：本产品为防爆型显象管管颈时，为防止X射线损伤，保证管子的防爆安全性，请使用同一型号的管子。韩国水原制造



HYUNDAI CALIBRATION & CERTIFICATION TECHNOLOGIES CO., LTD.
 SAN 136-1, AMI-RI, BUBAL-EUP, ICHEON-SI, KYOUNGKI-DO, 467-701, KOREA
 TEL : +82 31 639 8518 FAX : +82 31 639 8525