



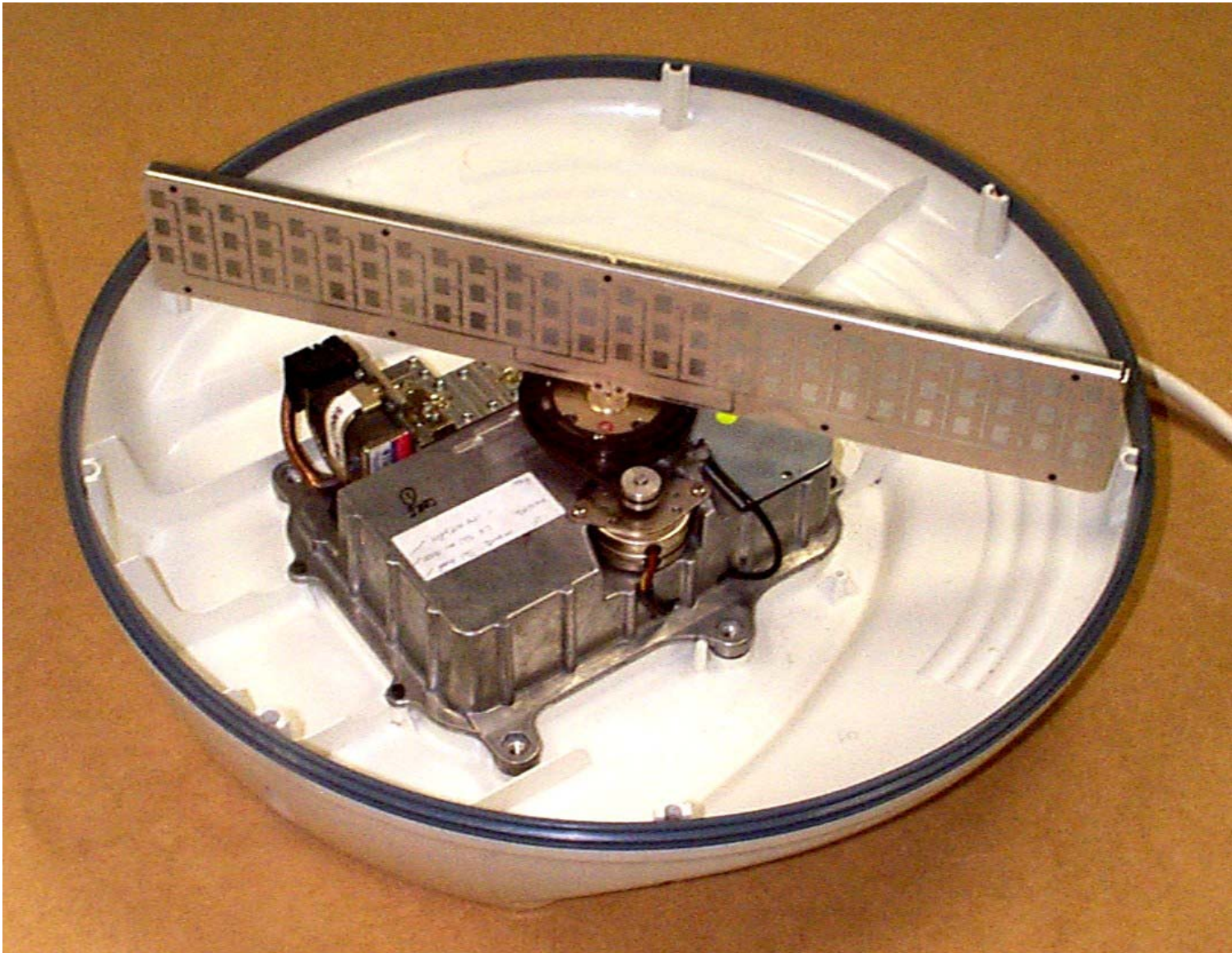
Raymarine Limited

Raytheon Pathfinder Series Radar

Photographs –Internal

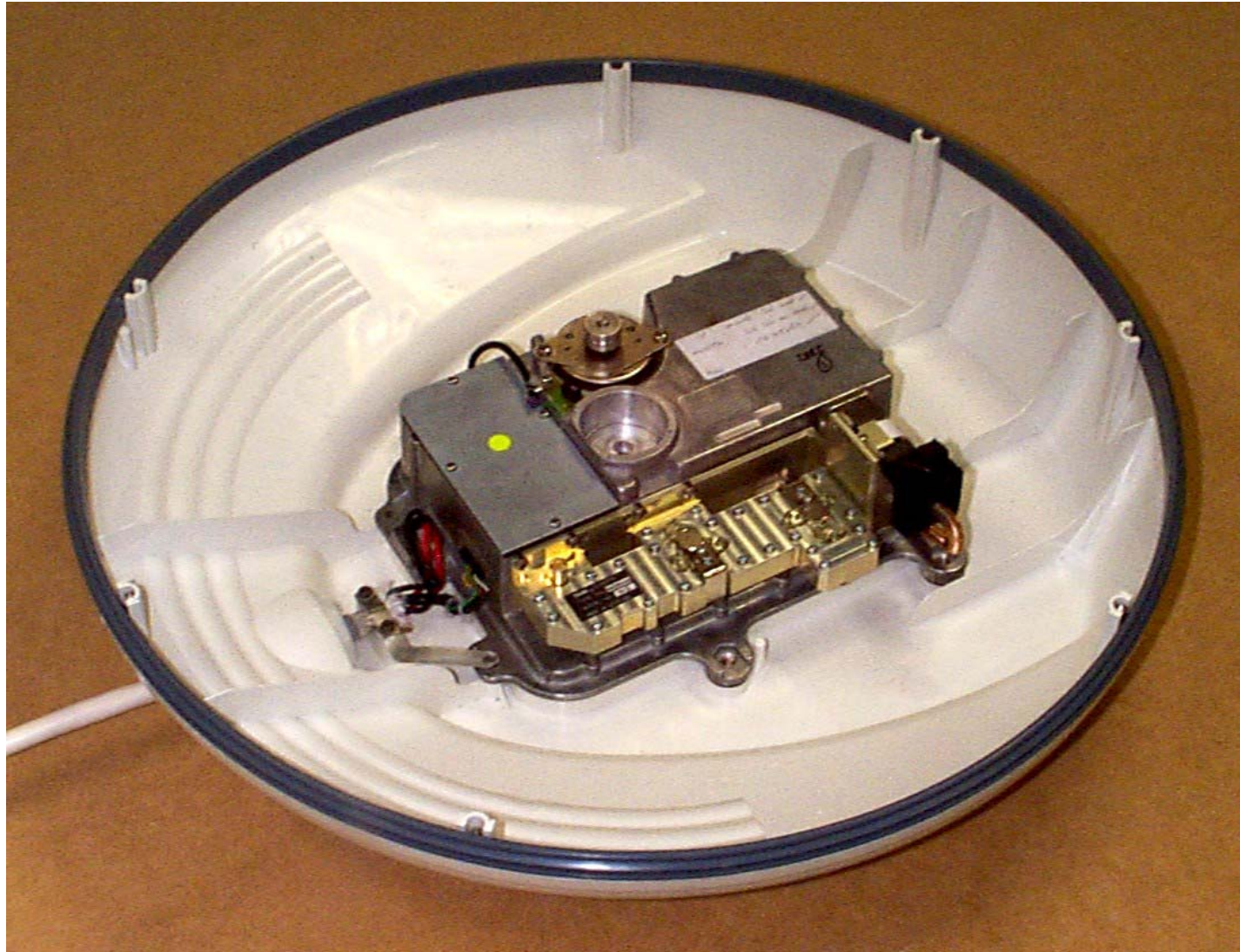
FCC ID: PJ5MTX4-S3

4kW, 24" Radome Scanner Unit



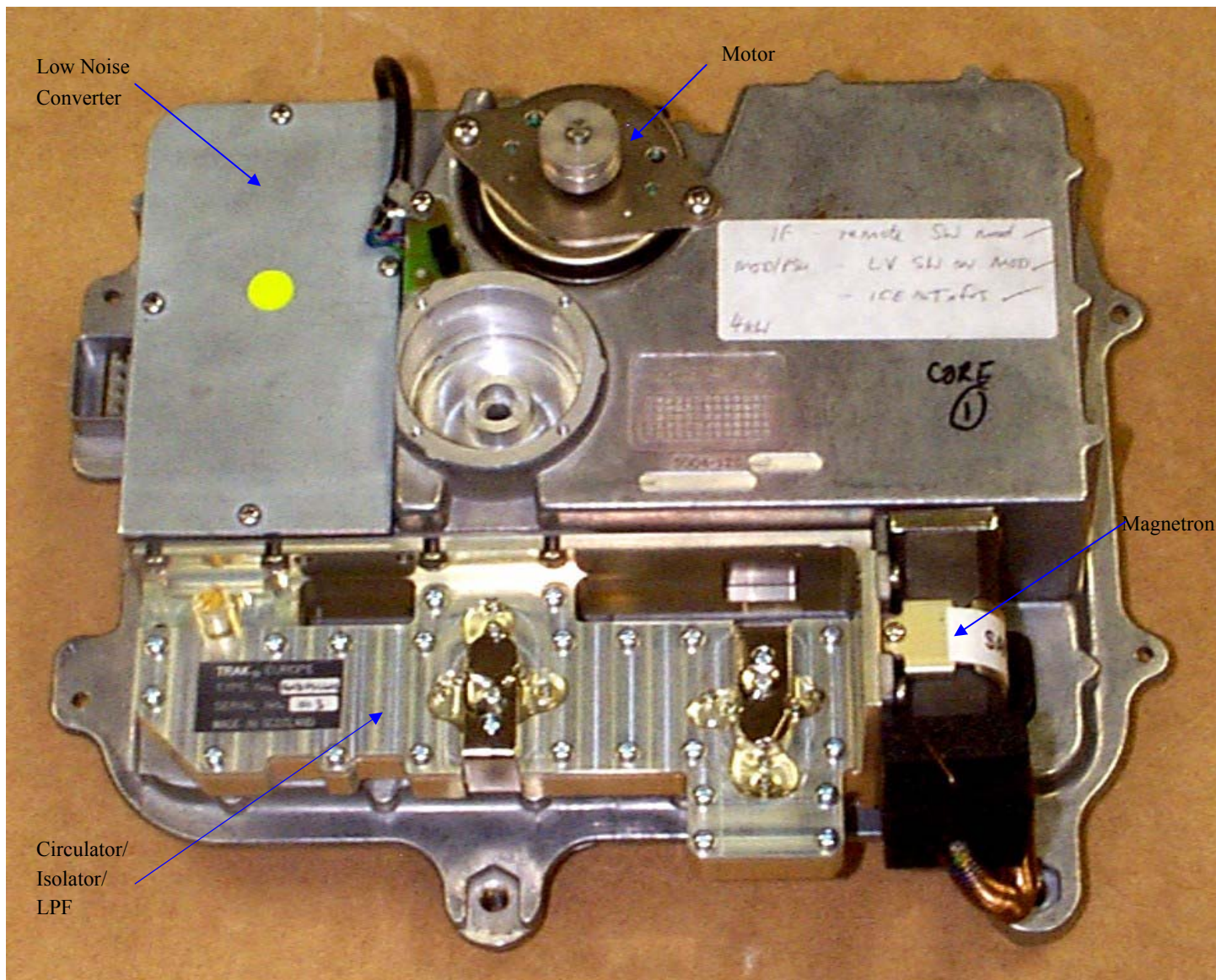
4Kw, 24" Radome Scanner Unit

Raymarine Limited, Anchorage Park, Portsmouth, England



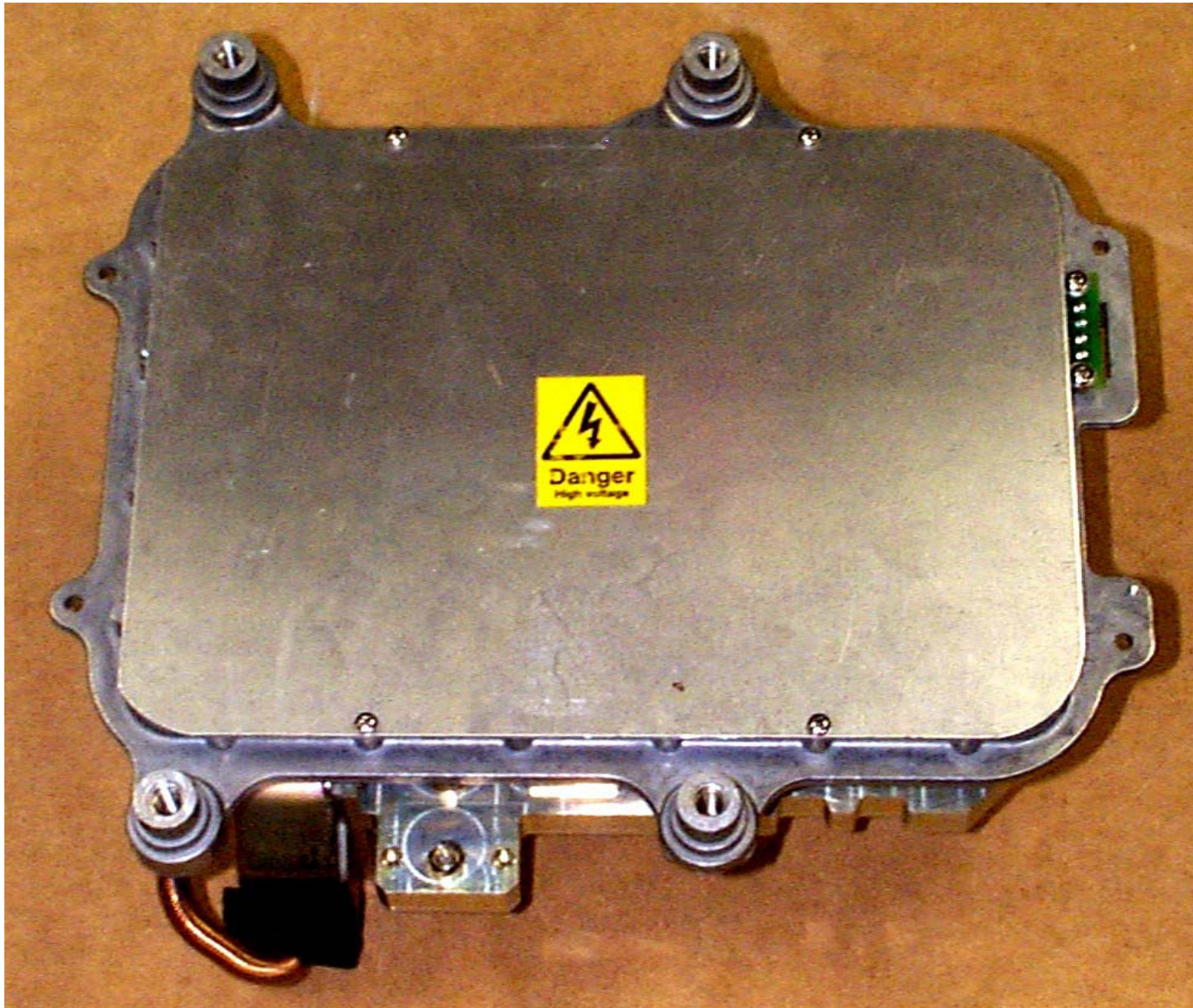
4kW, 24" Radome Scanner Unit

Raymarine Limited, Anchorage Park, Portsmouth, England



4kW, 24" Radome Scanner Unit

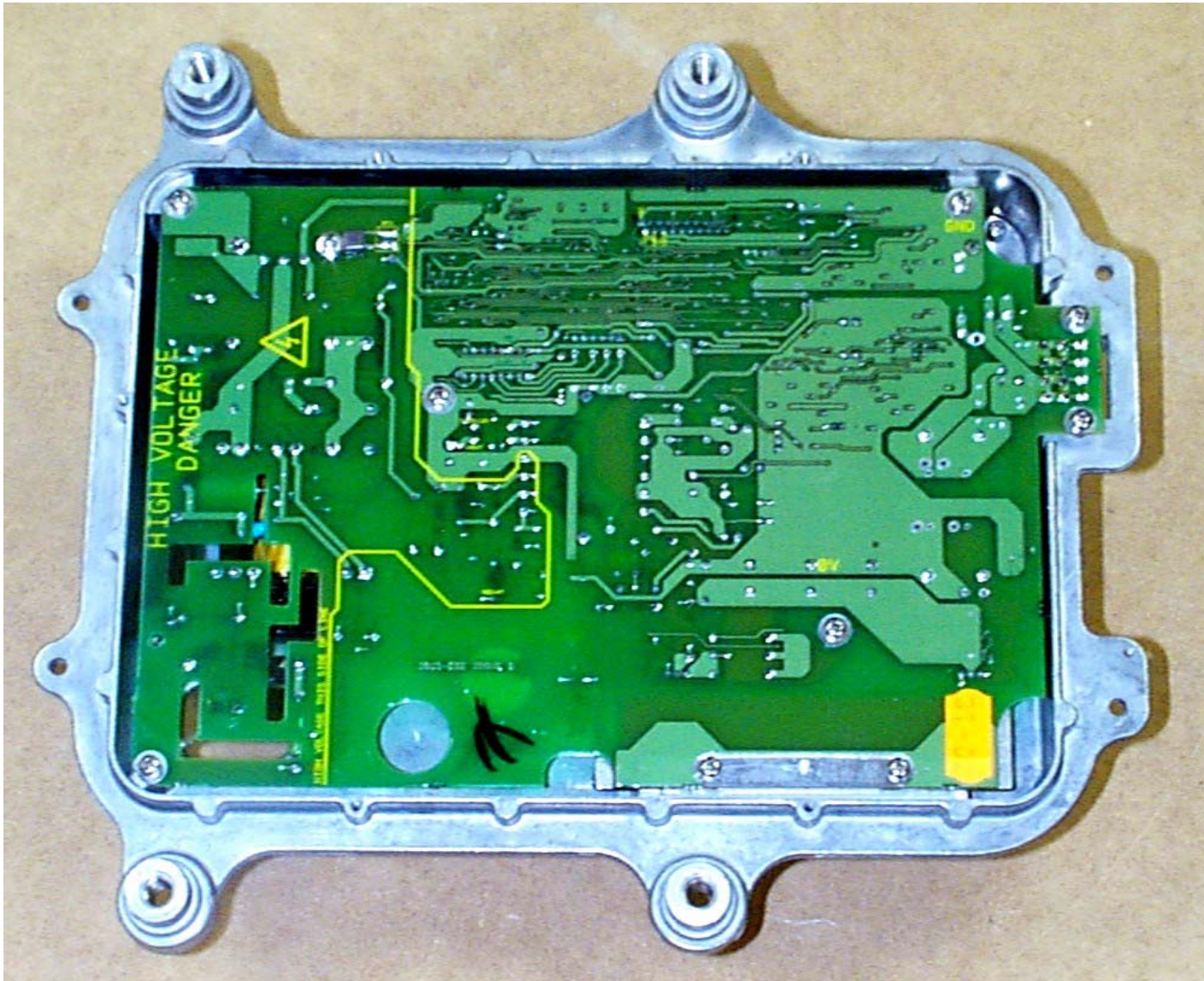
Top view of Core



4kW, 24" Radome Scanner Unit

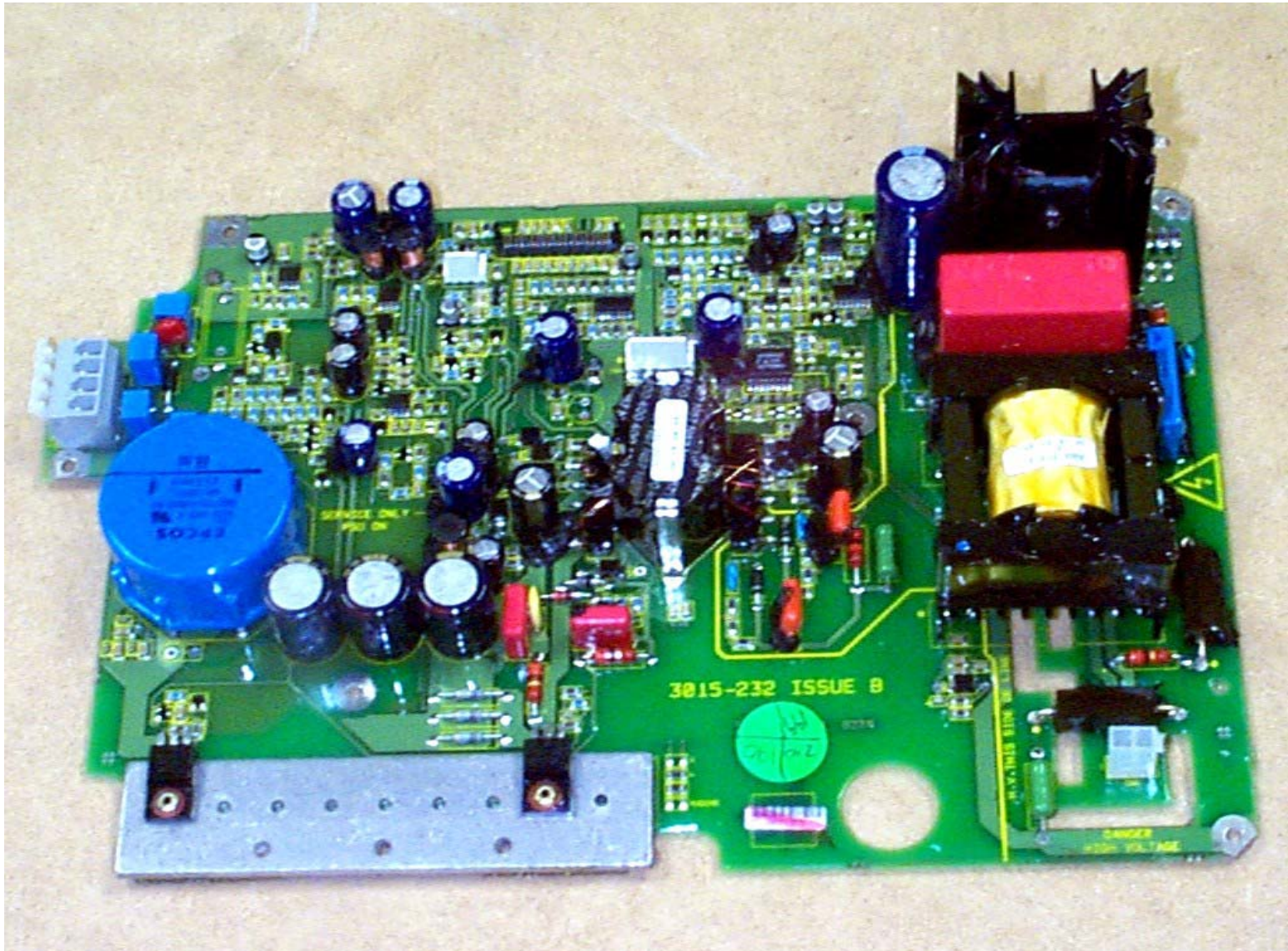
Under view of core

Raymarine Limited, Anchorage Park, Portsmouth, England



4kW, 24" Radome Scanner Unit

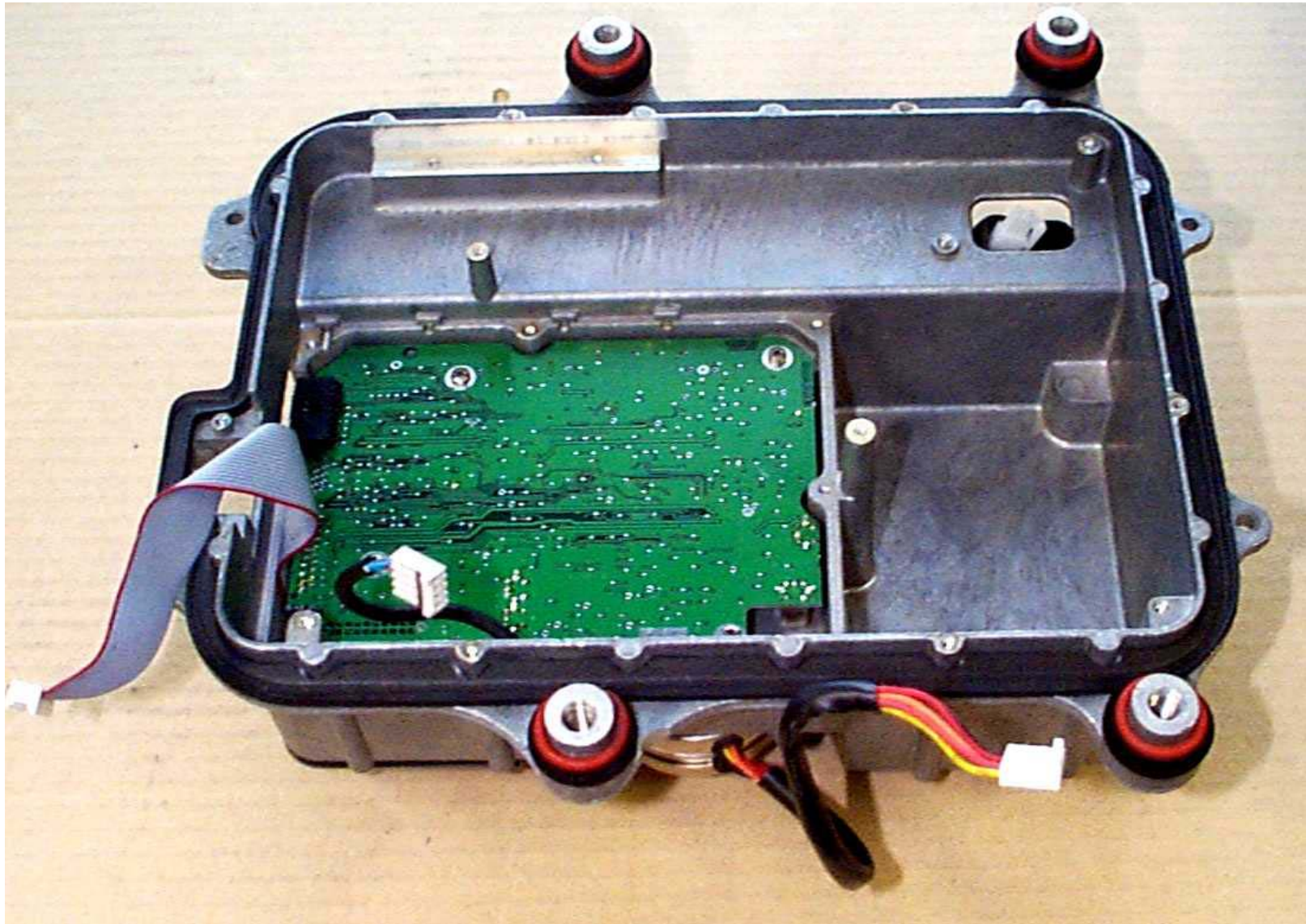
Underside of Modulator PCB, with screening plate removed



4kW, 24" Radome Scanner Unit

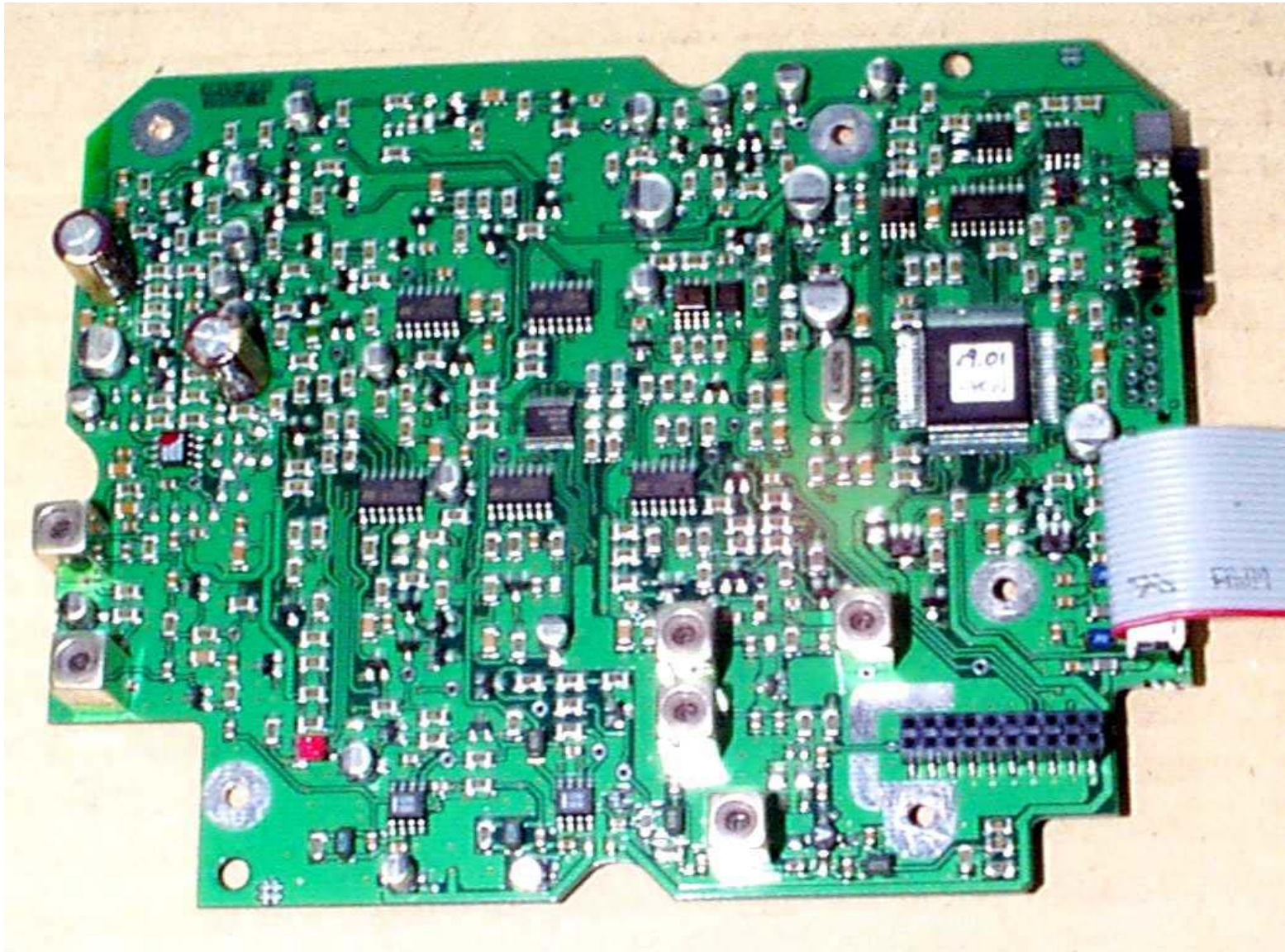
Modulator PCB

Raymarine Limited, Anchorage Park, Portsmouth, England



2kW and 4kW Radome Scanner Unit

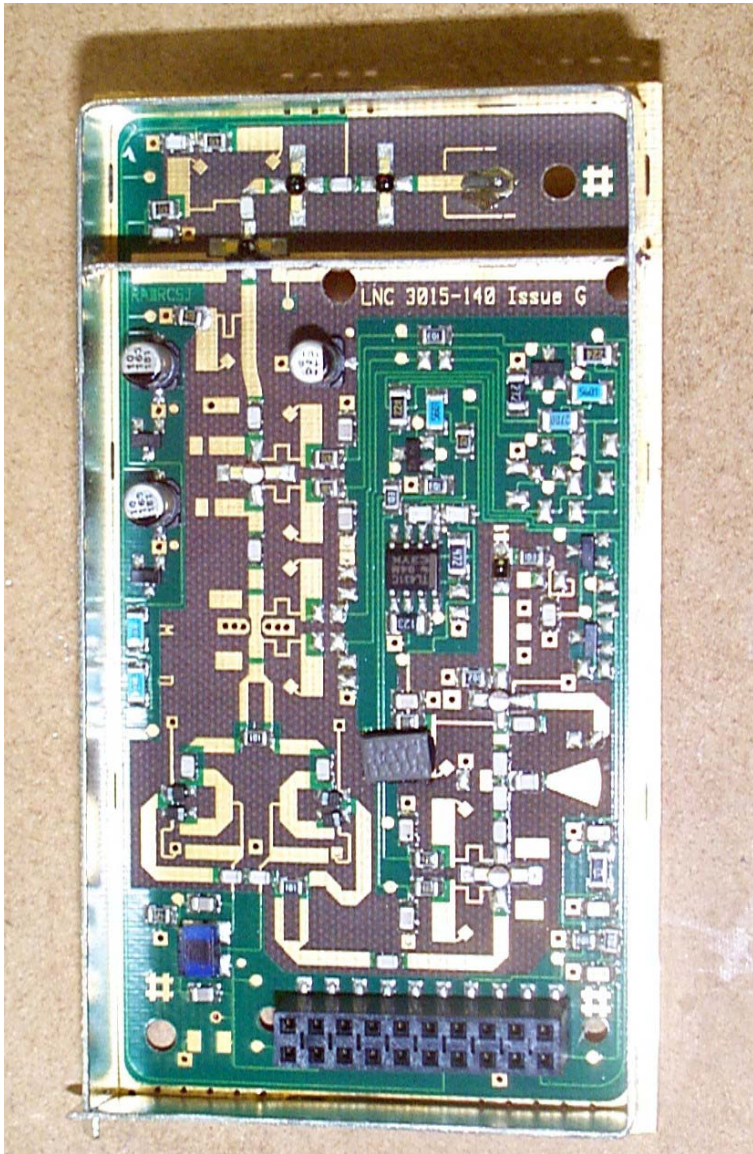
Underside of IF PCB, with screening plate removed



2kW and 4kW Radome Scanner Unit

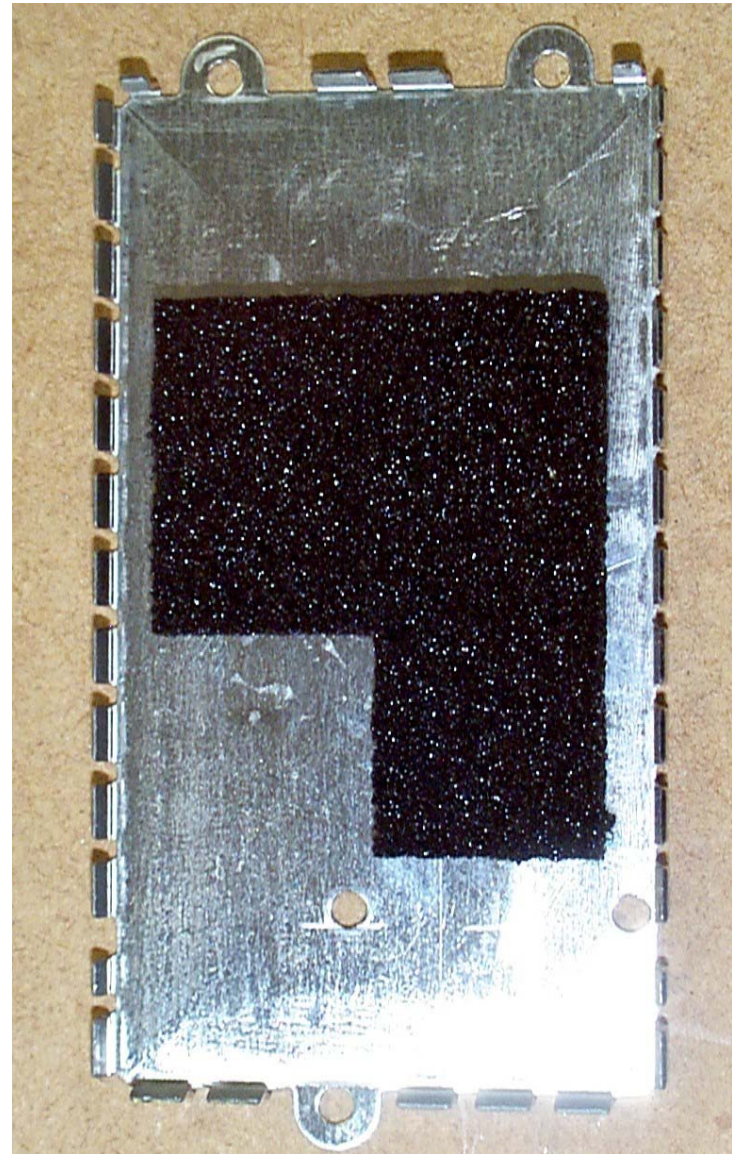
IF PCB

Raymarine Limited, Anchorage Park, Portsmouth, England



'Pathfinder' Scanner Unit

Raymarine Limited, Anchorage Park, Portsmouth, England



Low Noise Converter (LNC) and Cover