



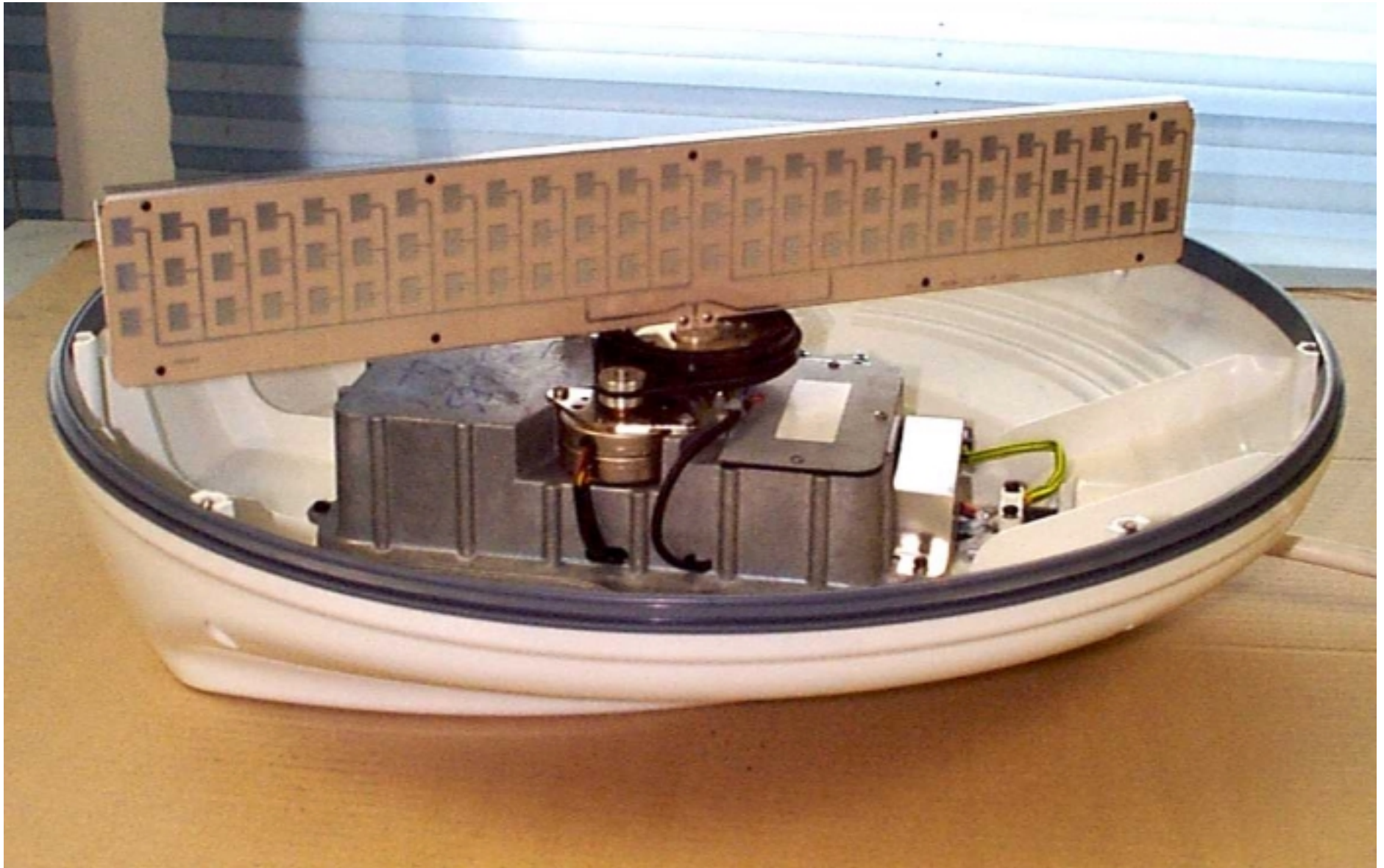
Raymarine Limited

**Raytheon Pathfinder
Series Radar**

Photographs –Internal

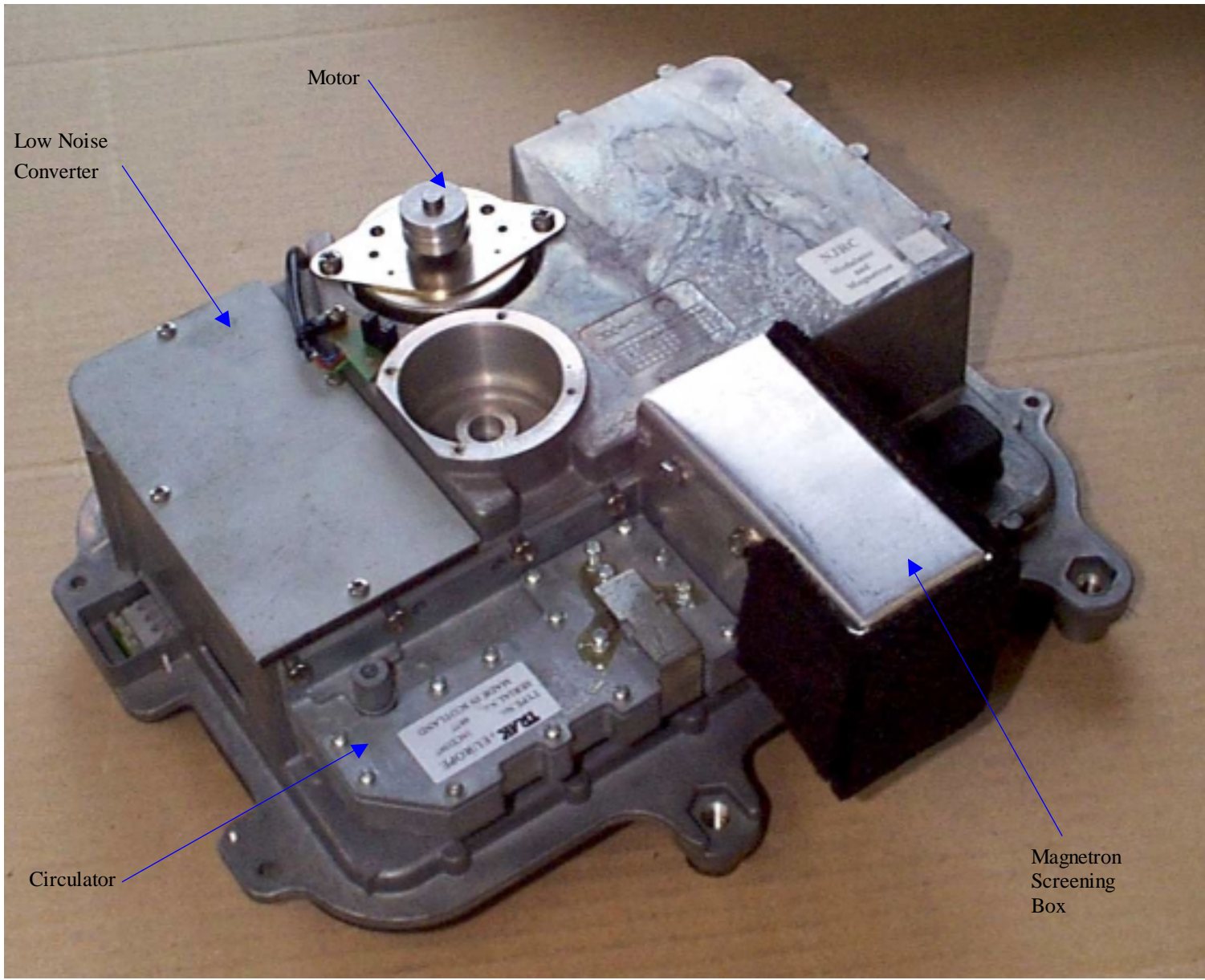
FCC ID: PJ5MTX4-8P

4kW 8-Pulse Width Radome Scanner Unit



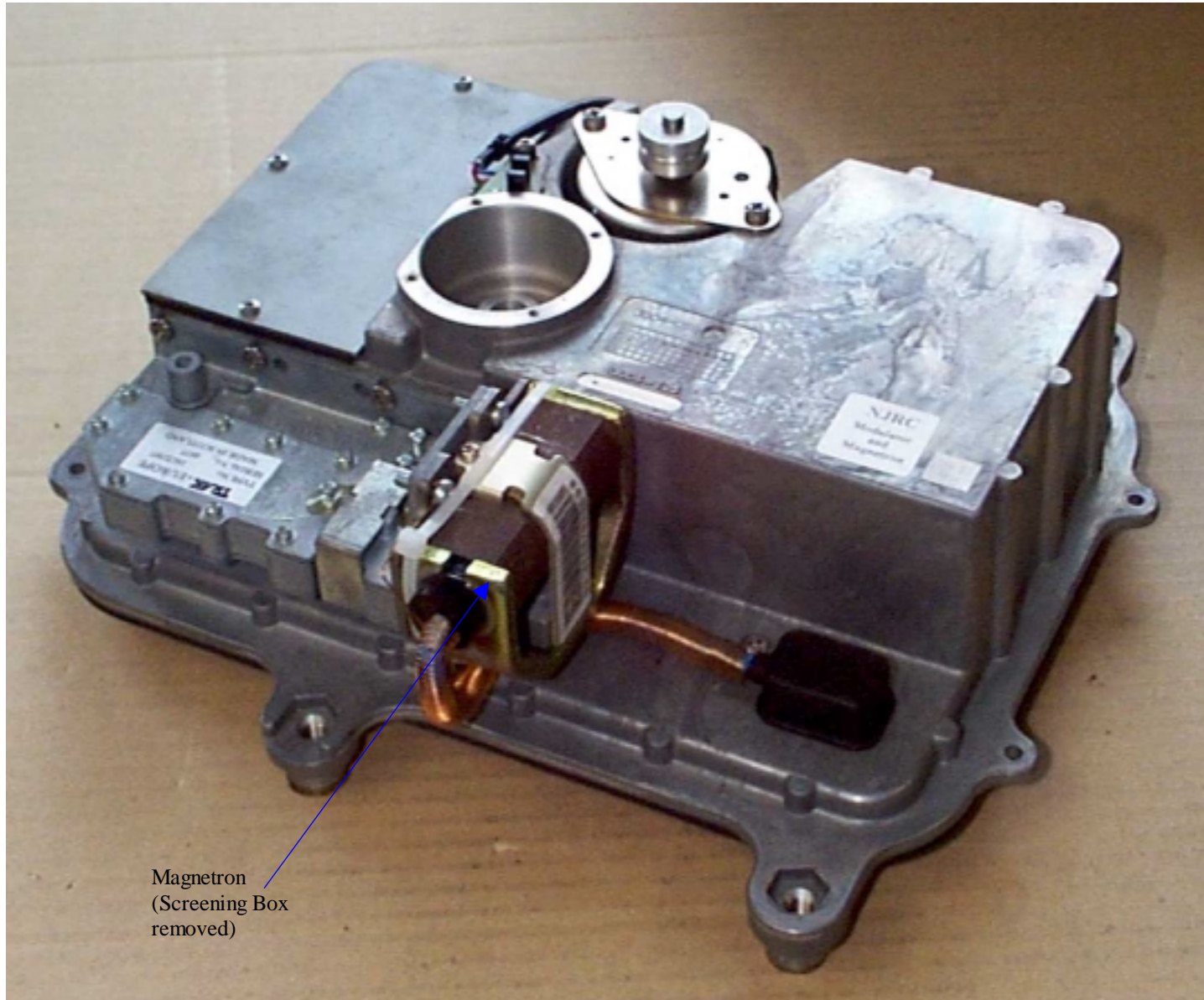
4D – 4Kw (8-Pulse width), 24" Radome Scanner Unit

Raymarine Limited, Anchorage Park, Portsmouth, England



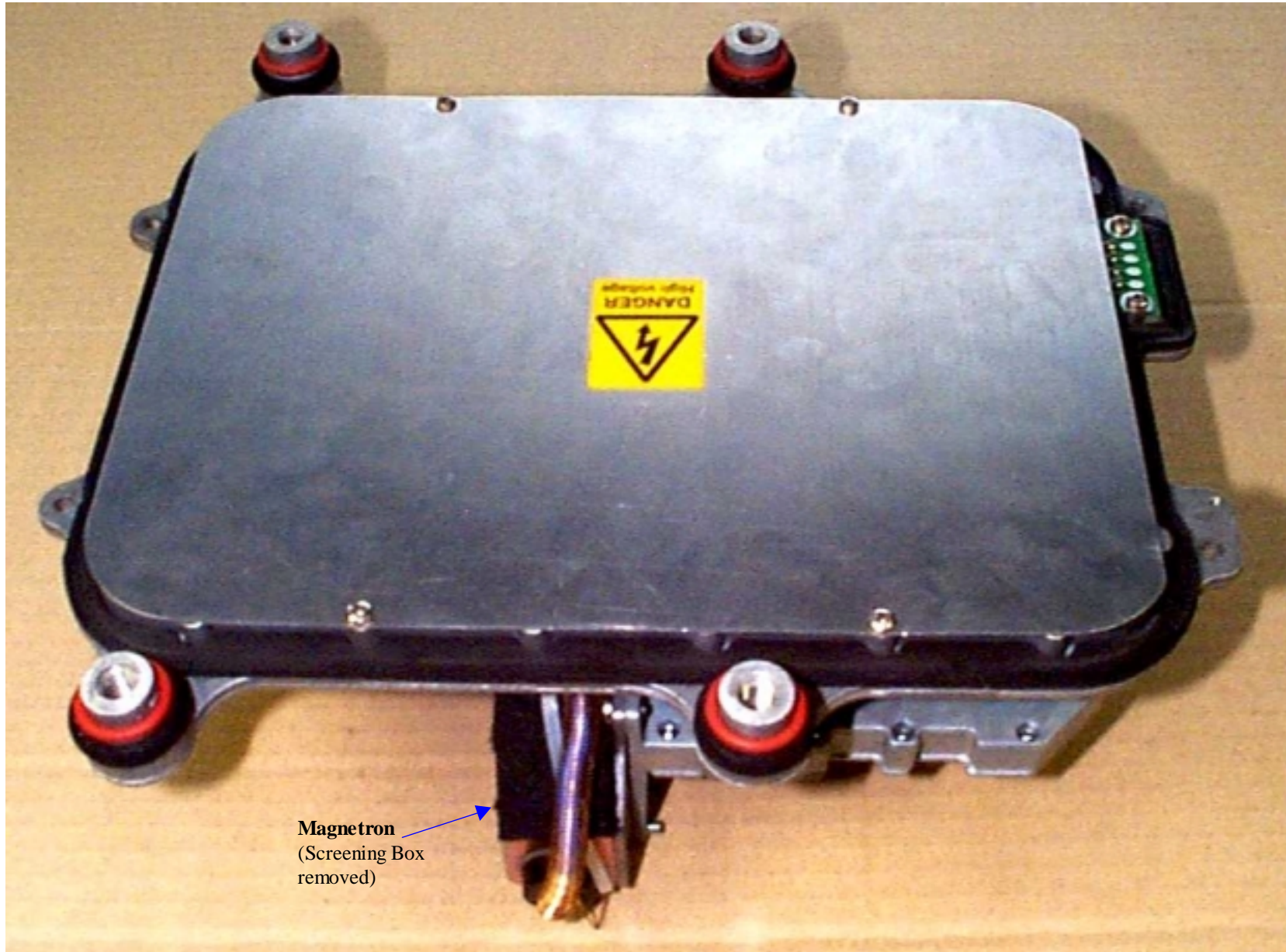
4D – 4kW (8-Pulse Width), 24'' Radome Scanner Unit

Top view of Core



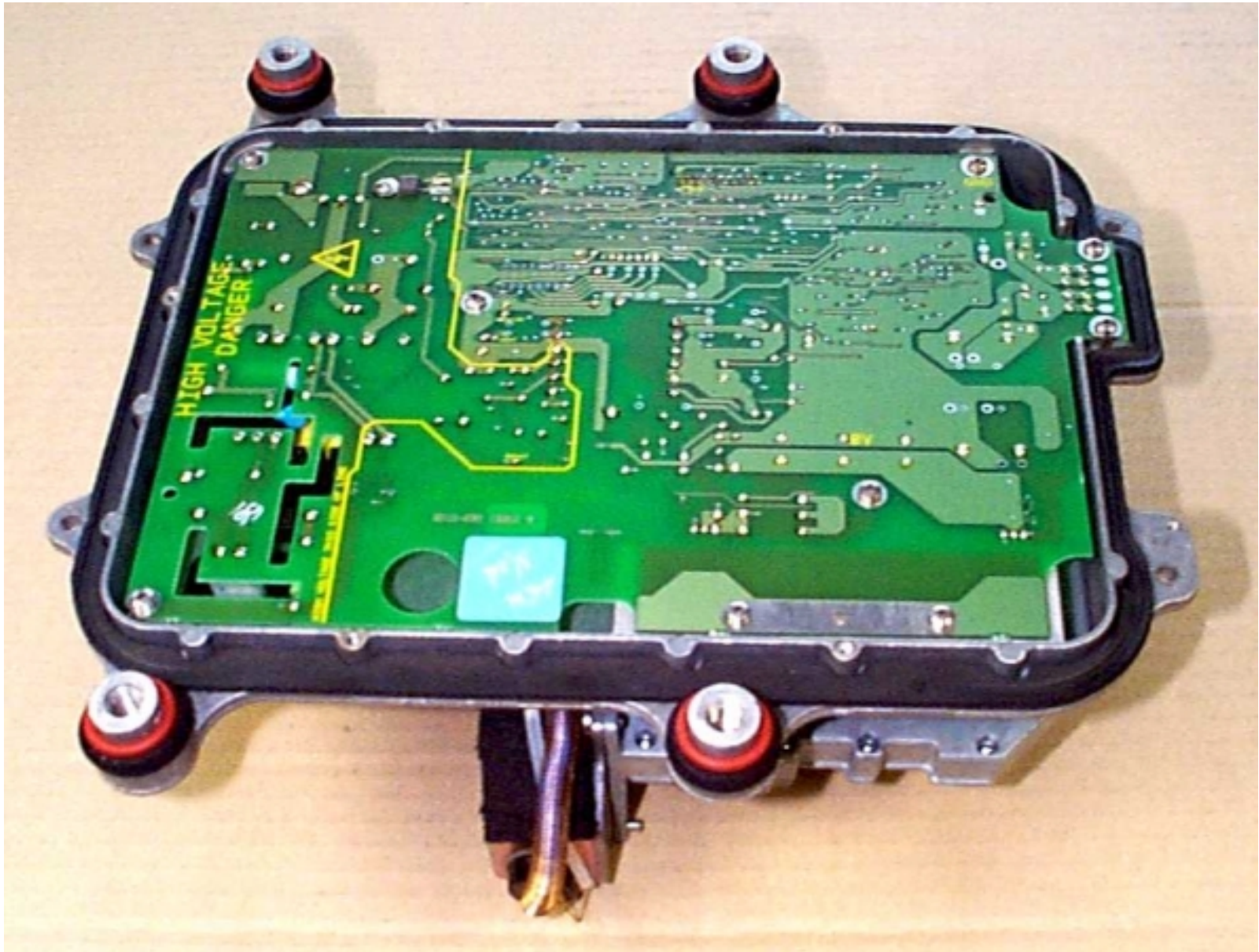
4D – 4kW (8-Pulse Width), 24'' Radome Scanner Unit

Top view of Core



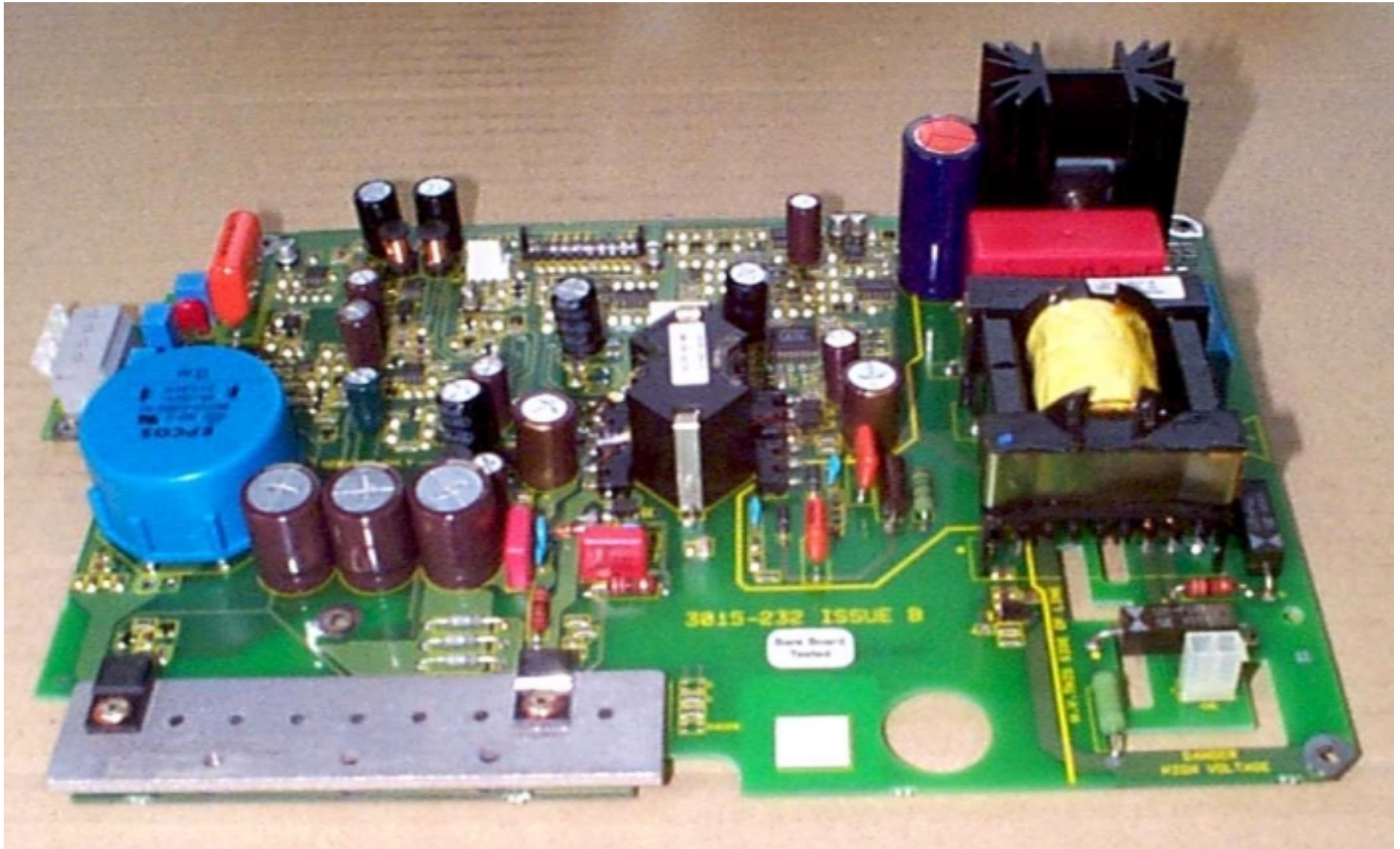
4D – 4kW (8-Pulse Width), 24'' Radome Scanner Unit

Under view of core



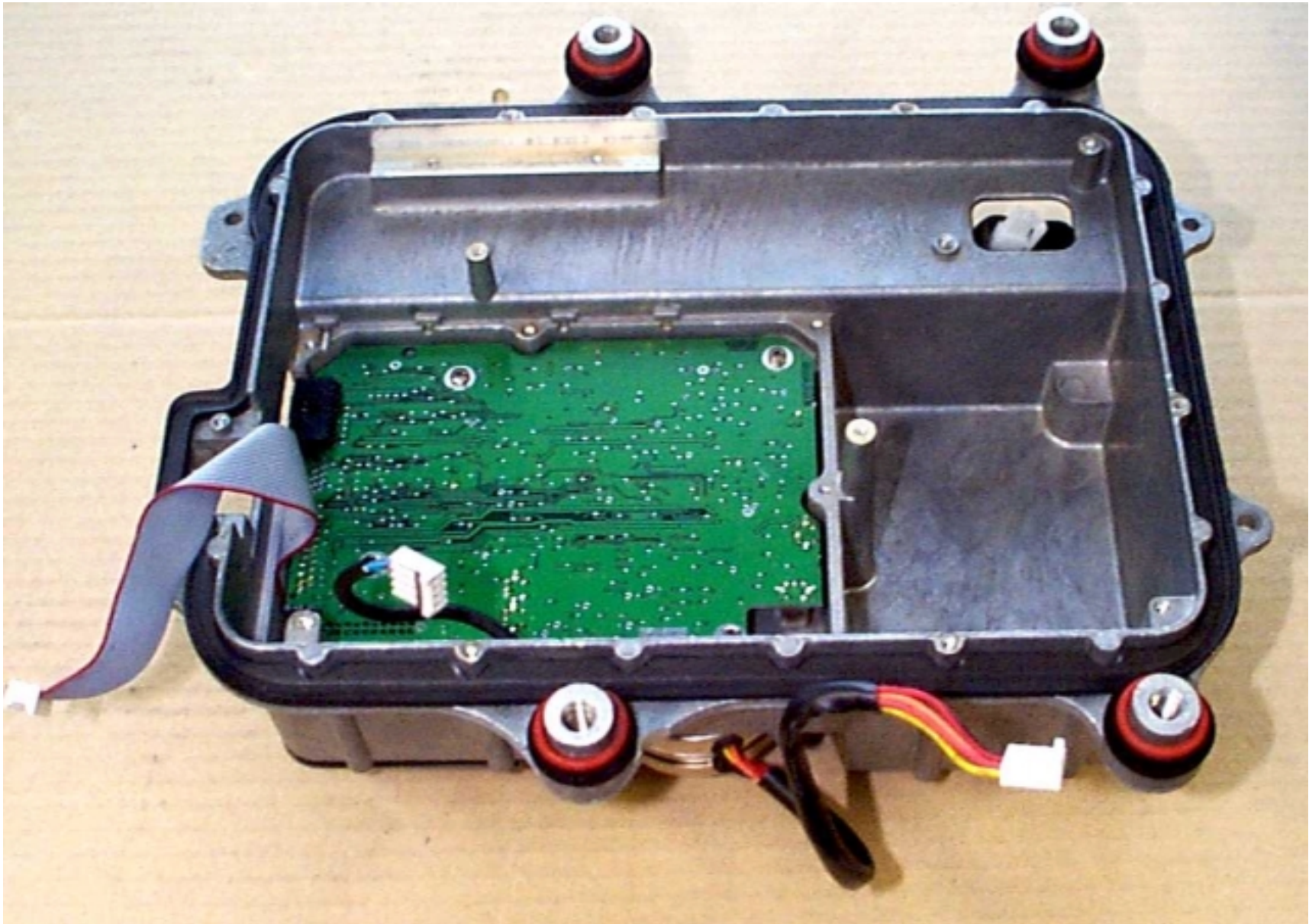
4D – 4kW (8Pulse Width), 24" Radome Scanner Unit

Underside of Modulator PCB, with screening plate removed



4D – 4kW (8-Pulse Width), 24" Radome Scanner Unit

Modulator PCB



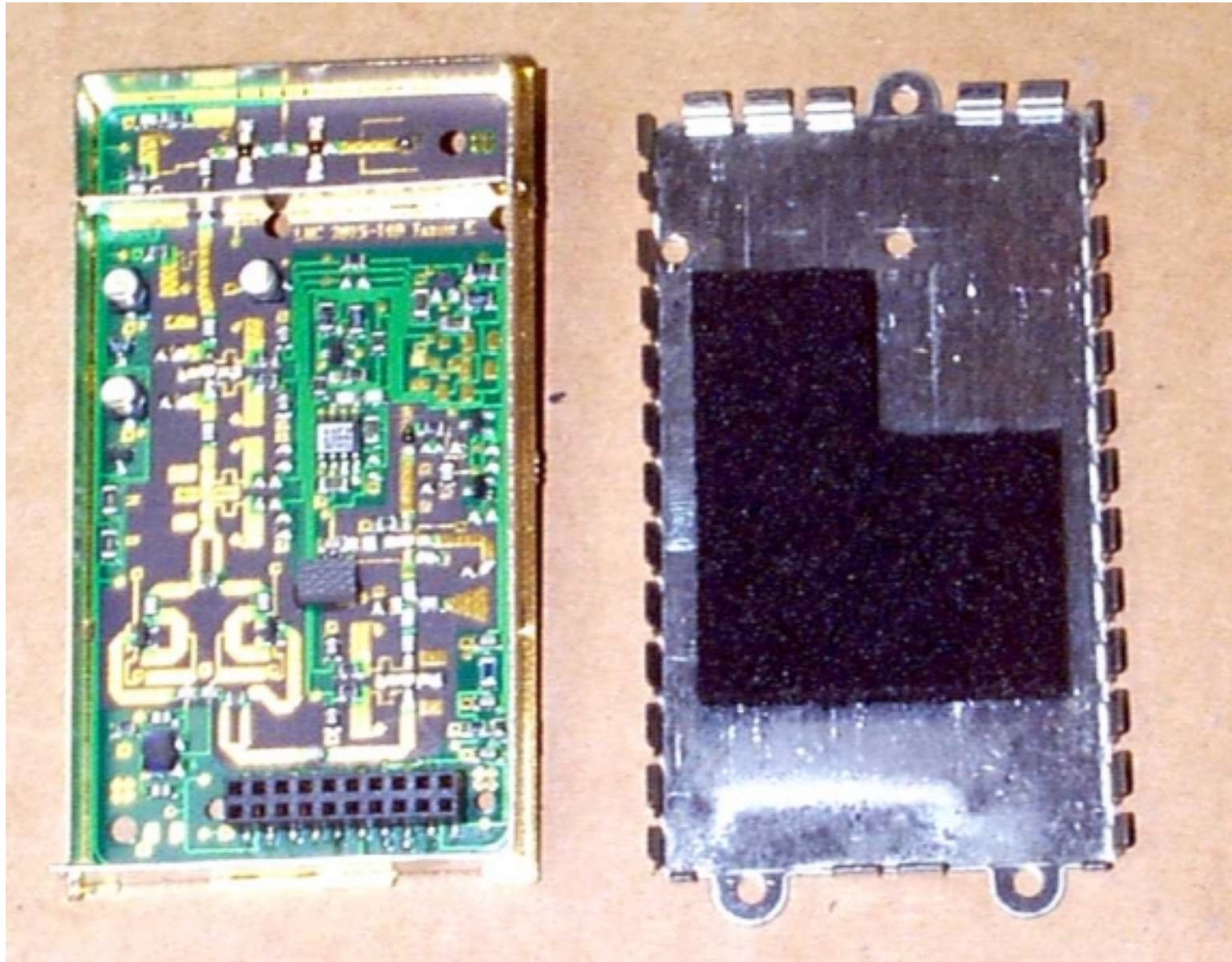
4D – 4kW (8-Pulse Width), 24" Radome Scanner Unit

Underside of IF PCB, with screening plate removed



2D and 4D (8-Pulse Width) Radome Scanner Unit

IF PCB



'Pathfinder' Scanner Unit

Low Noise Converter (LNC) and cover