



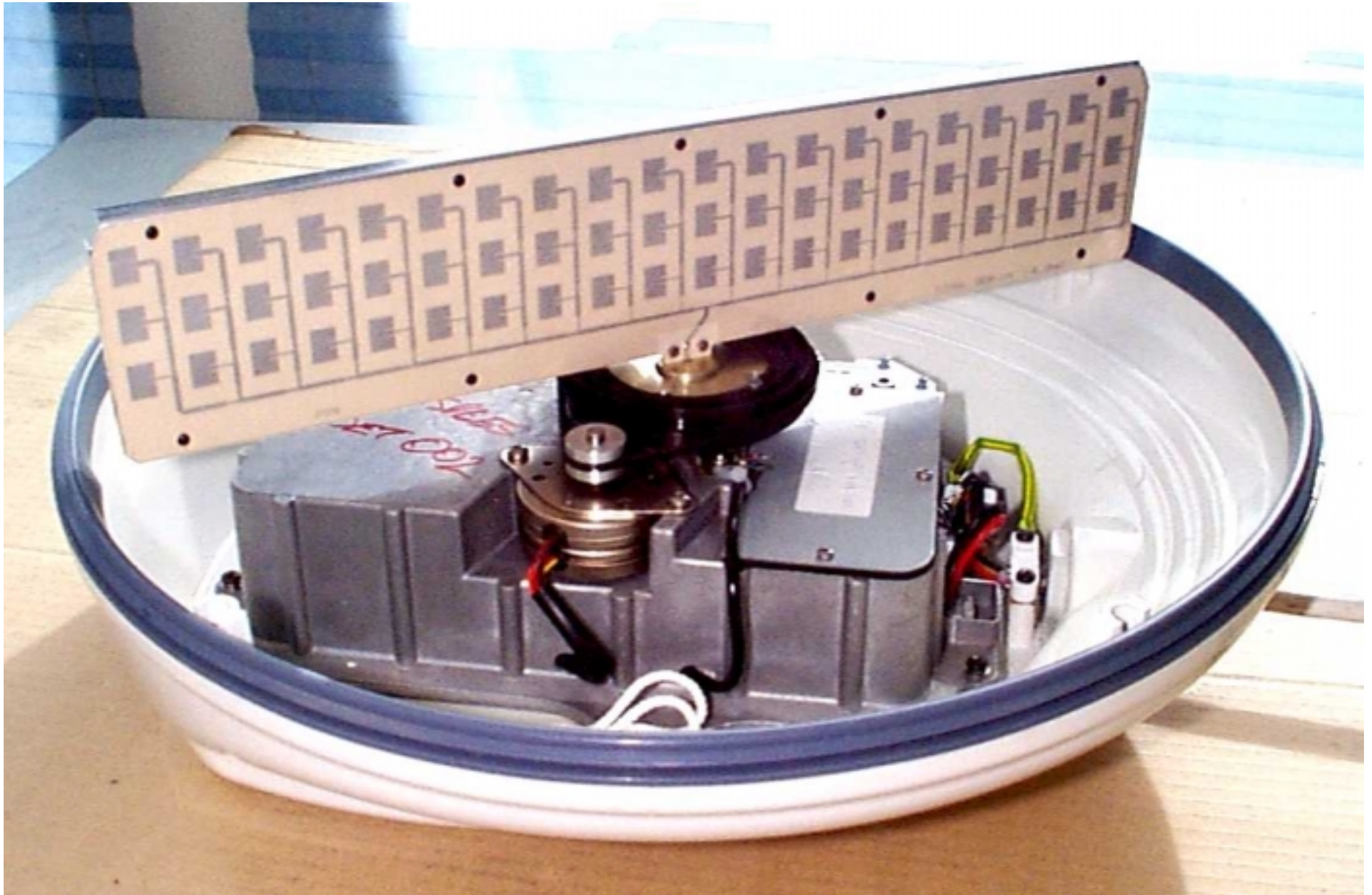
Raymarine Limited

**Raytheon Pathfinder
Series Radar**

Photographs –Internal

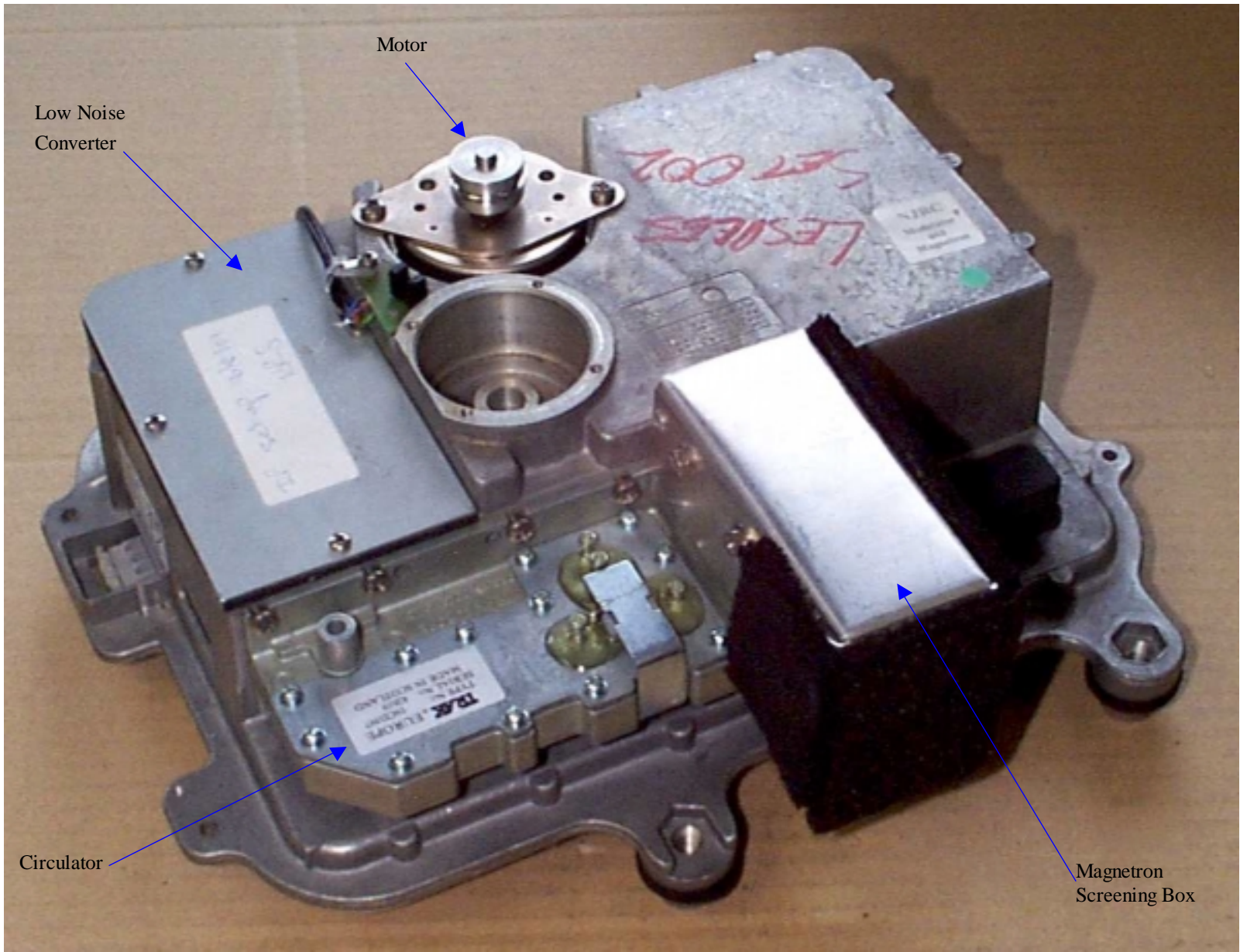
FCC ID: PJ5MTX2-8P

2kW 8-Pulse Width Radome Scanner Unit



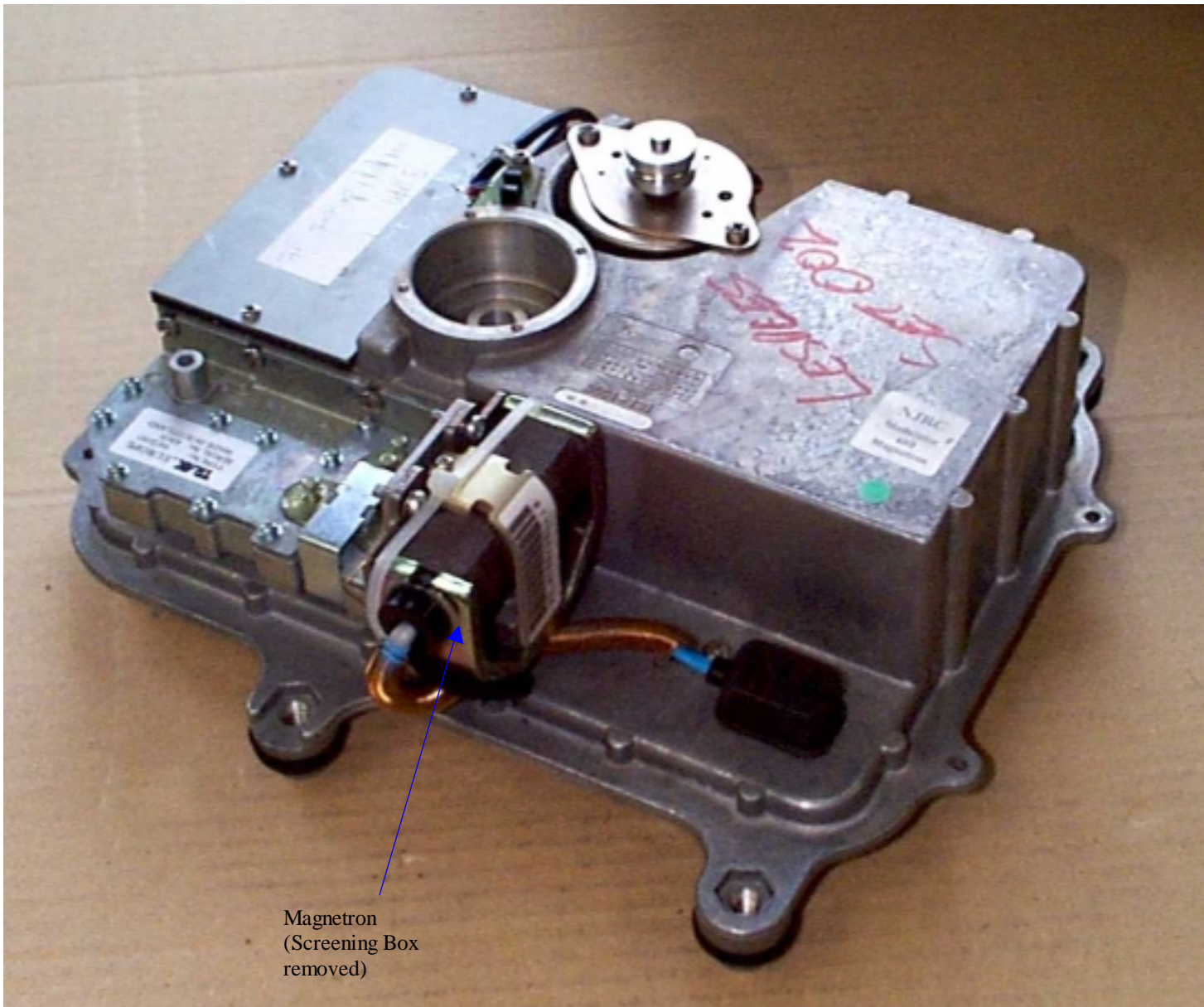
2D - 2Kw (8-Pulse width), 18'' Radome Scanner Unit

Raymarine Limited, Anchorage Park, Portsmouth, England



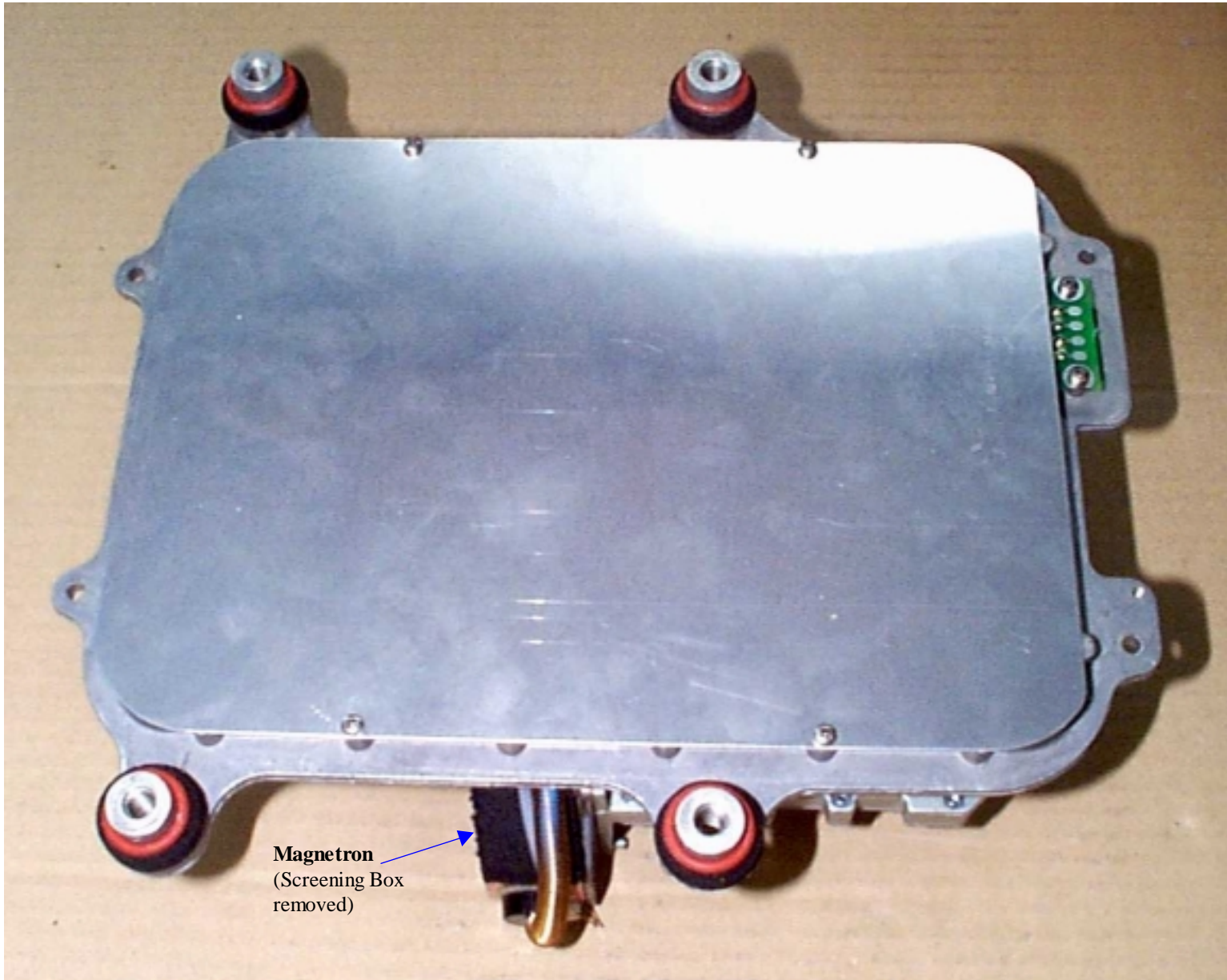
2D – 2kW (8-Pulse Width), 18" Radome Scanner Unit

Top view of Core



2D – 2kW (8-Pulse Width), 18" Radome Scanner Unit

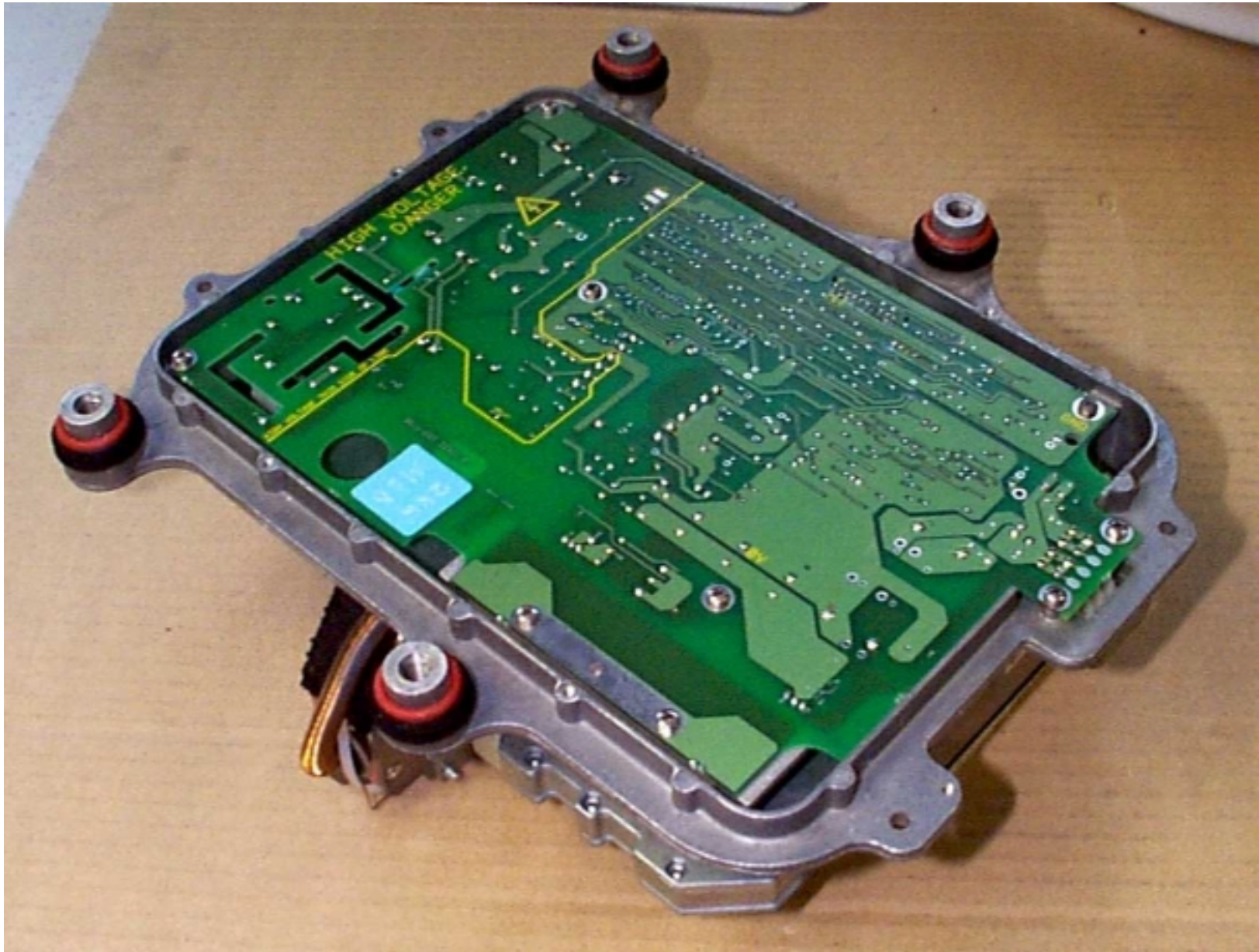
Top view of Core



Magnetron
(Screening Box
removed)

2D - 2kW (8-Pulse Width), 18'' Radome Scanner Unit

Under view of core



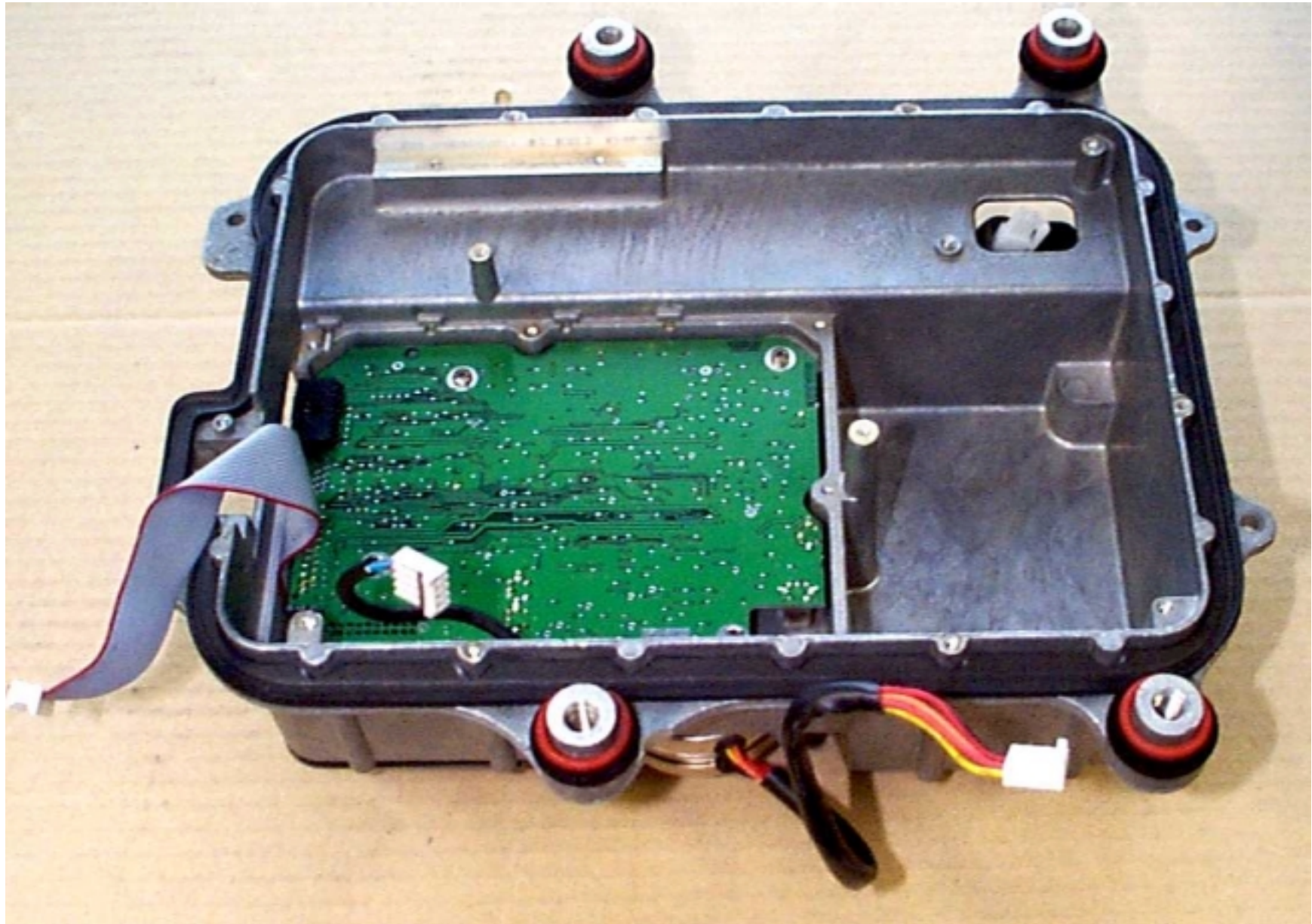
2D – 2kW (8Pulse Width), 18" Radome Scanner Unit

Underside of Modulator PCB, with screening plate removed



2D – 2kW (8-Pulse Width), 18" Radome Scanner Unit

Modulator PCB



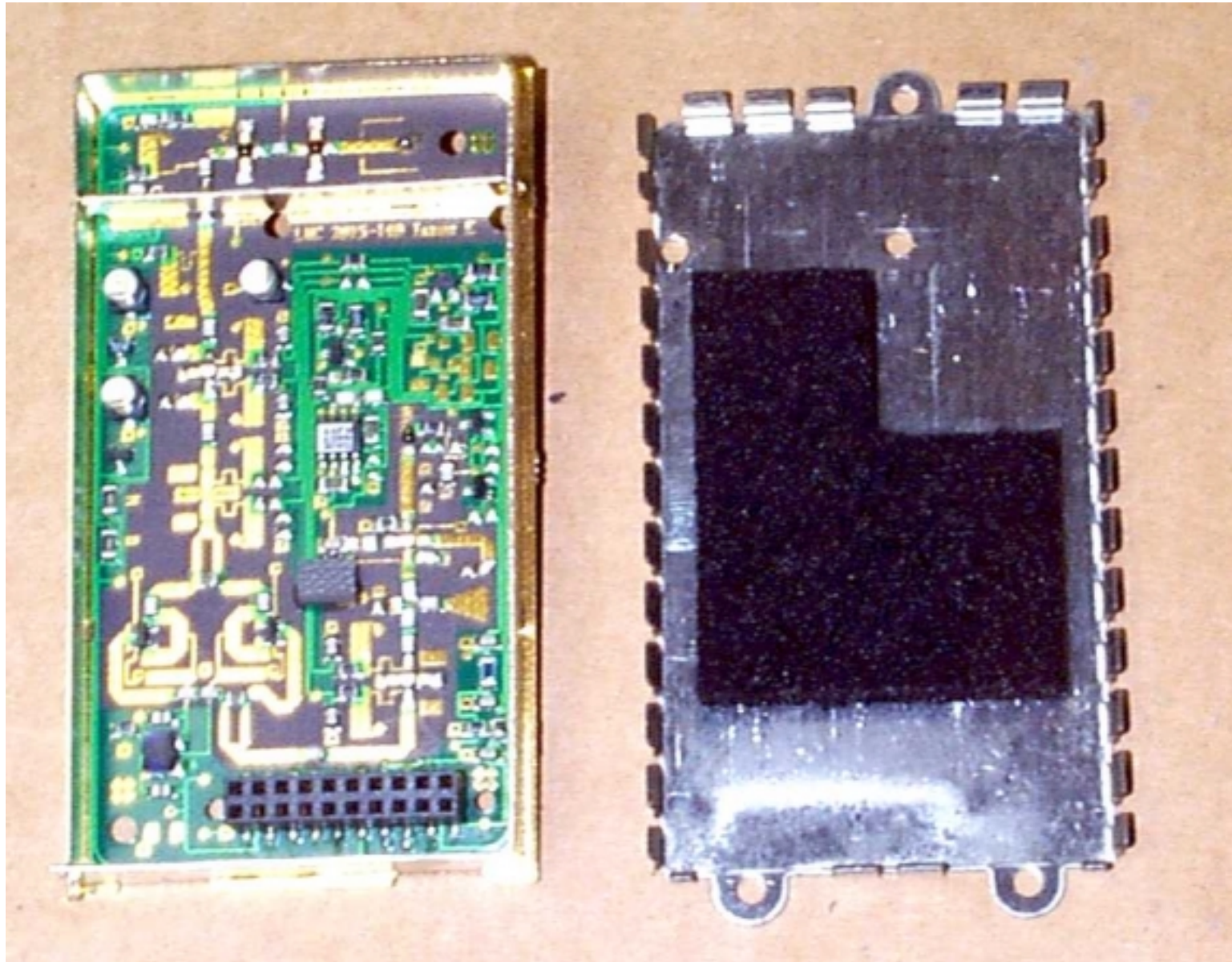
2D – 2kW (8-Pulse Width), 18" Radome Scanner Unit

Underside of IF PCB, with screening plate removed



2D and 4D (8-Pulse Width) Radome Scanner Unit

IF PCB



'Pathfinder' Scanner Unit

Low Noise Converter (LNC) and cover