



**a65 WIFI, a67 WIFI, a68 WIFI, a75 WIFI, a77 WIFI and a78 WIFI multi-function displays**

**Internal Photographs**

# INDEX

Figure 1 – a6x Bezel removed & Micro SD Reader door open .....	4
Figure 2 – a7x Bezel removed .....	5
Figure 3 – a6x Rear of A6 .....	6
Figure 4 – a7x Rear of A6 .....	7
Figure 5 - a78 with connector covers removed .....	8
Figure 6 - Inside of A6 rear casing showing Sonar PCB .....	9
Figure 7 - Inside of A7 rear casing showing Sonar PCB .....	10
Figure 8 – a67 and a77 Sonar PCB (top).....	11
Figure 9 – a67 and a77 Sonar PCB (bottom).....	12
Figure 10 - a68 and a78 Sonar PCB (top) .....	13
Figure 11 – a68 and a78 Sonar PCB (bottom).....	14
Figure 12 –a6x rear of CPU and display module .....	15
Figure 13 - a7x rear of CPU and display module.....	16
Figure 14 - CPU Wifi Version (top, CAN's removed).....	17
Figure 15 - CPU WiFi Version (bottom).....	18
Figure 16 - CPU Bluetooth Version.....	19
Figure 17 - CPU Bluetooth Version (lid removed) .....	20
Figure 18 - CPU Bluetooth Version (bottom).....	21
Figure 19 - Rear of LCD (CPU PCB removed).....	22
Figure 20 - Front of LCD .....	23
Figure 21 - Rear of LCD.....	24
Figure 22 - Rear of front facia .....	25
Figure 23 - GPS PCB (fitted).....	26
Figure 24 - GPS PCB (top).....	27
Figure 25 - GPS PCB (bottom) .....	28
Figure 26 - Micro SD Reader (top).....	29
Figure 27 - Micro SD Reader (bottom) .....	30

## Build standards

Internally the a6x and a7x displays are identical with the exception of screen size, the table below describes the different build standards

	Bluetooth Module fitted to CPU board	WIFI Module fitted to CPU board	Standard Sonar board Fitted	Downvision sonar board fitted
a65	☒			
a67	☒		☒	
a68	☒			☒
a65 WIFI		☒		
a67 WIFI		☒	☒	
a68 WIFI		☒		☒
a75	☒			
a77	☒		☒	
a78	☒			☒
a75 WIFI		☒		
a77 WIFI		☒	☒	
a78 WIFI		☒		☒



**Figure 1 – a6x Bezel removed & Micro SD Reader door open**



Figure 2 – a7x Bezel removed



Sonar connector, only on a67 and a77

Figure 3 – a6x Rear of A6



Figure 4 – a7x Rear of A6

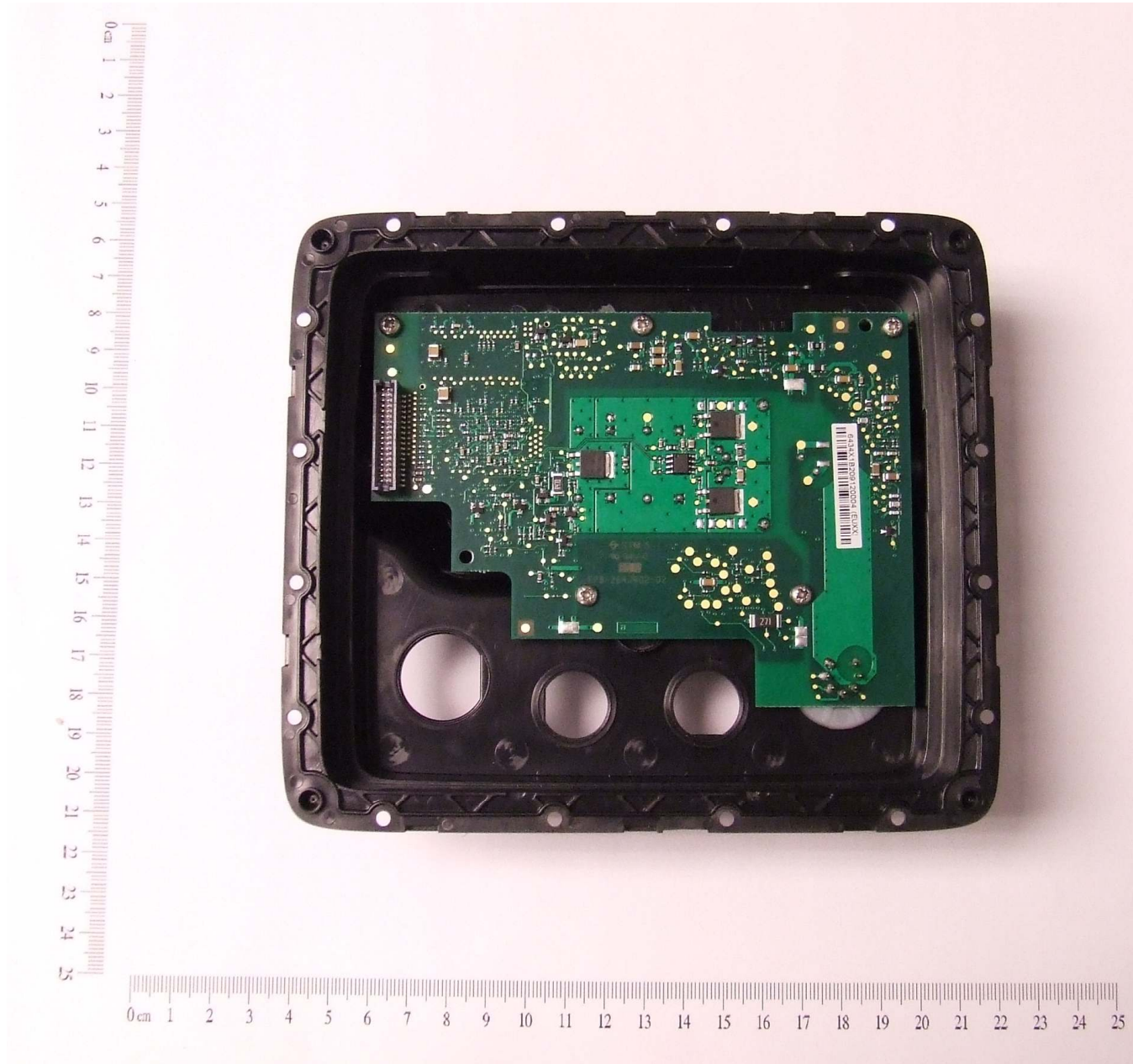


Sonar connector, only on a68 and a78



Figure 5 - a78 with connector covers removed





**Figure 6 - Inside of A6 rear casing showing Sonar PCB**



Figure 7 - Inside of A7 rear casing showing Sonar PCB

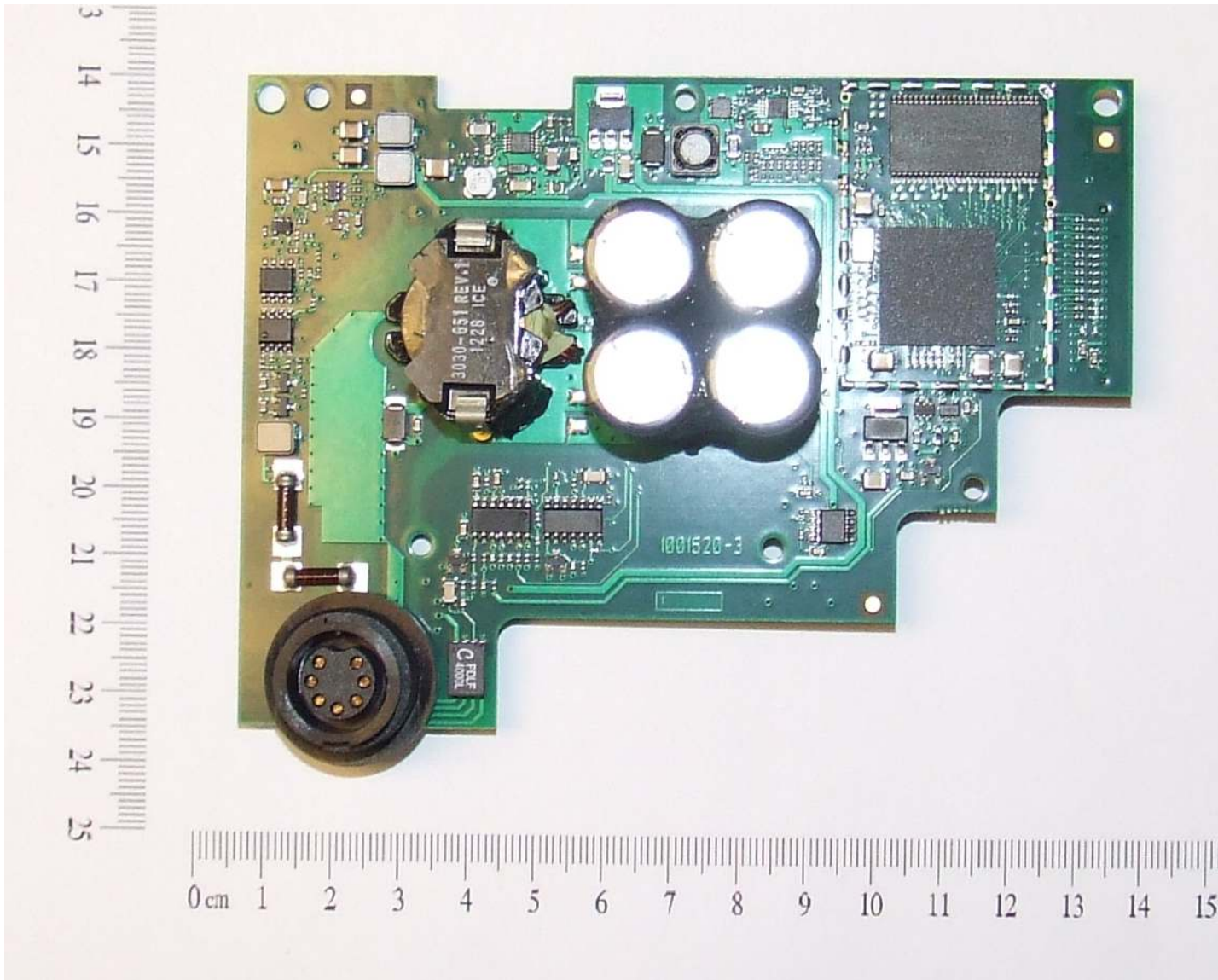
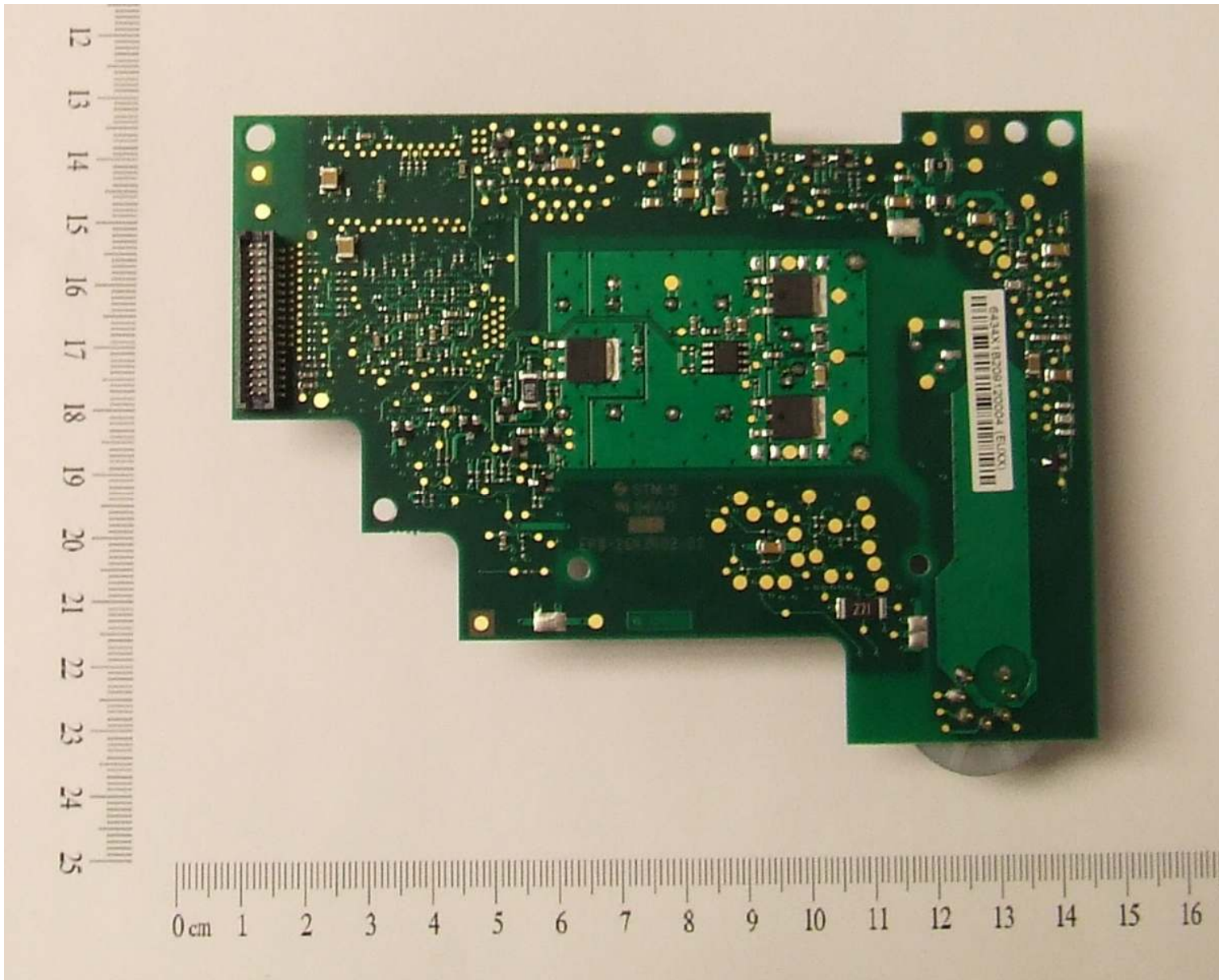


Figure 8 – a67 and a77 Sonar PCB (top)



**Figure 9 – a67 and a77 Sonar PCB (bottom)**

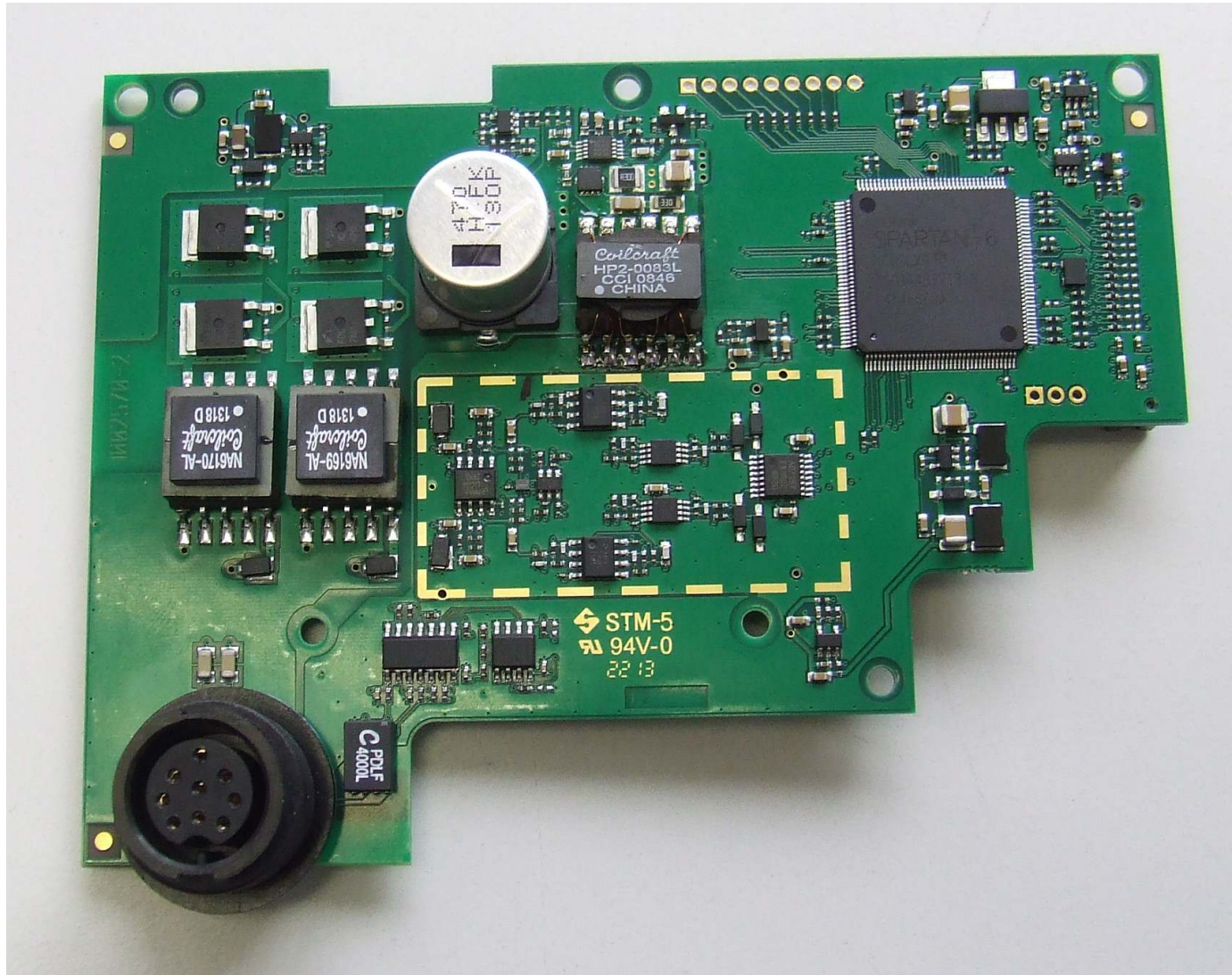


Figure 10 - a68 and a78 Sonar PCB (top)

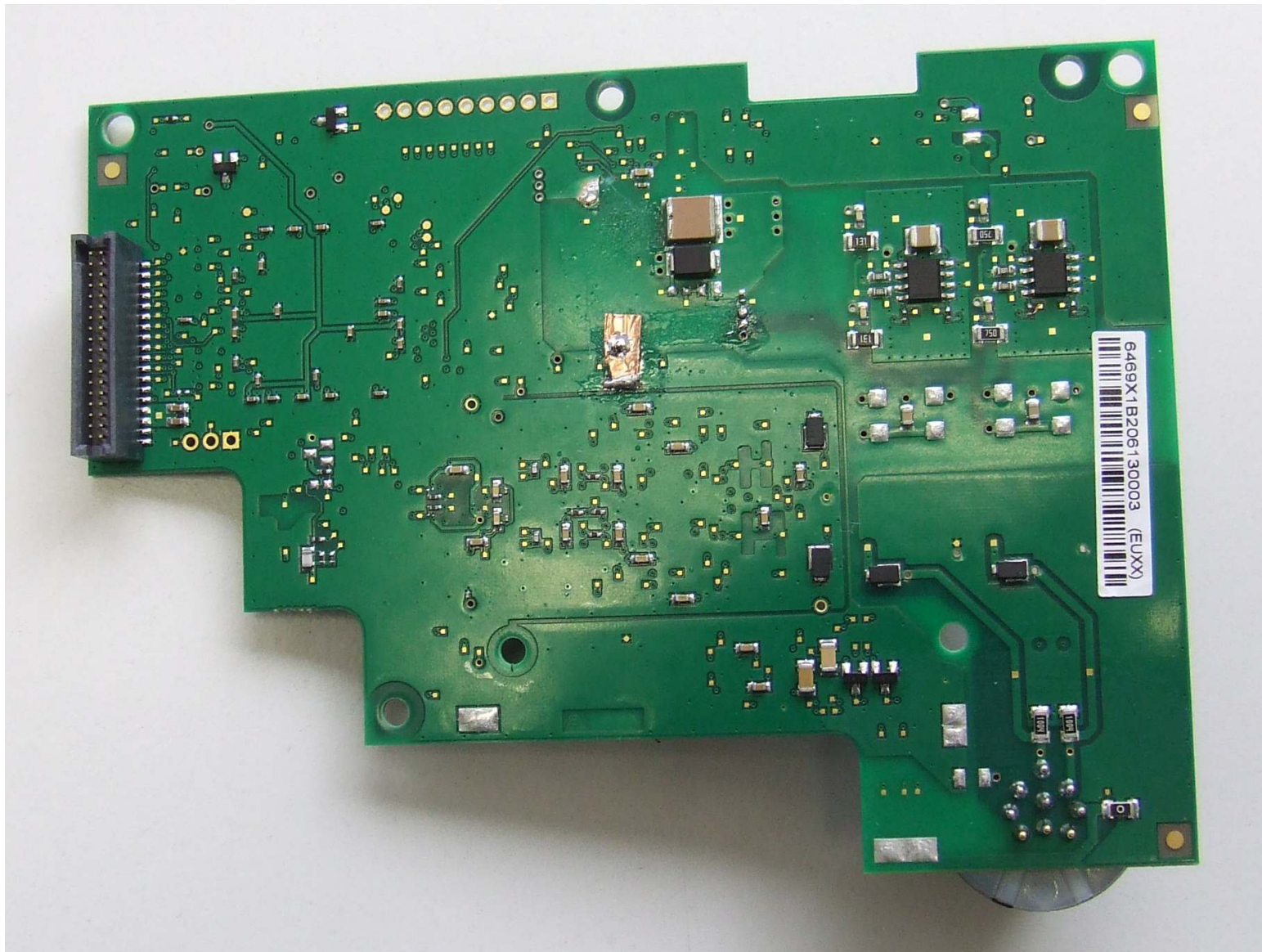


Figure 11 – a68 and a78 Sonar PCB (bottom)



Figure 12 –a6x rear of CPU and display module

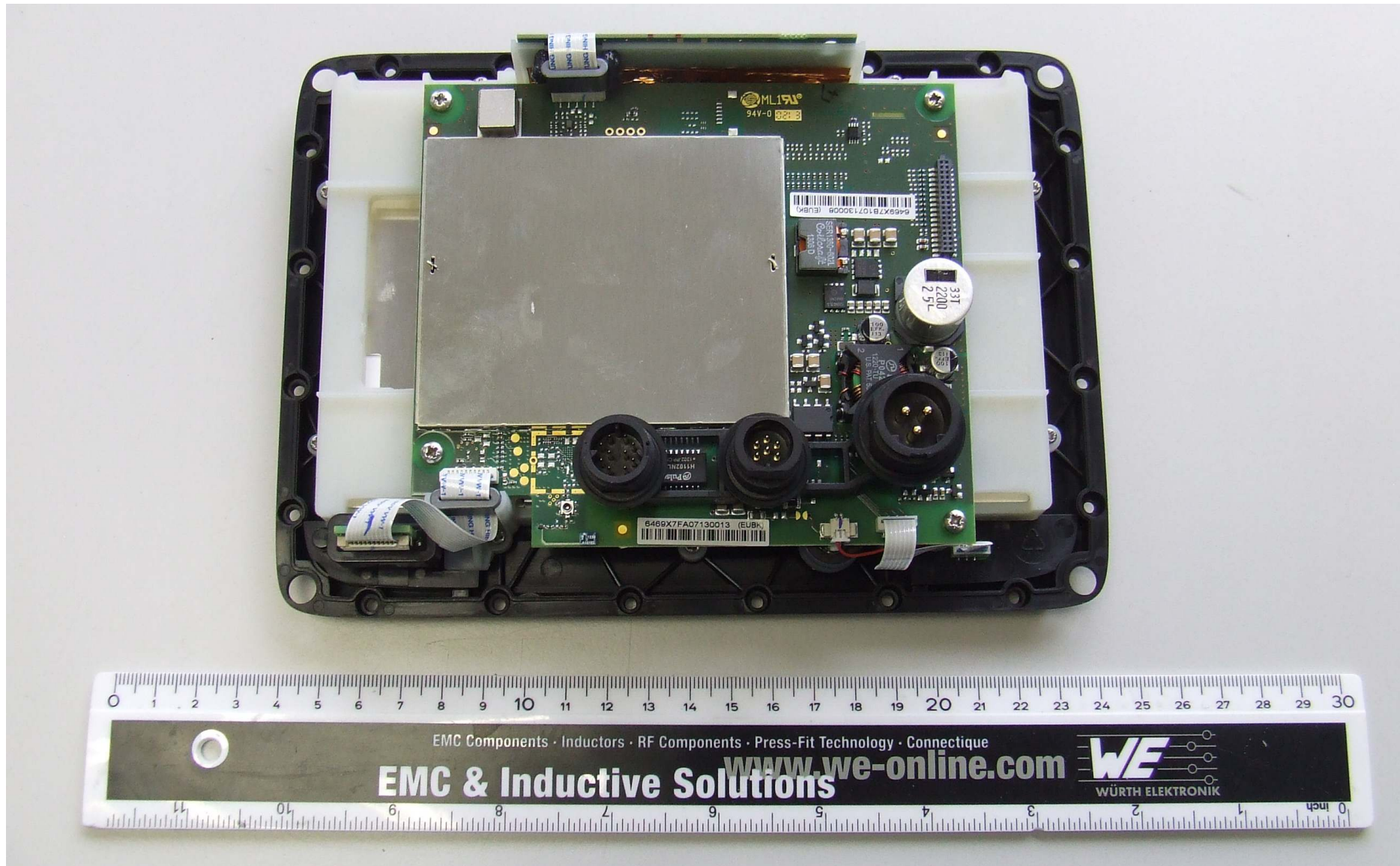


Figure 13 - a7x rear of CPU and display module



Bluetooth module removed

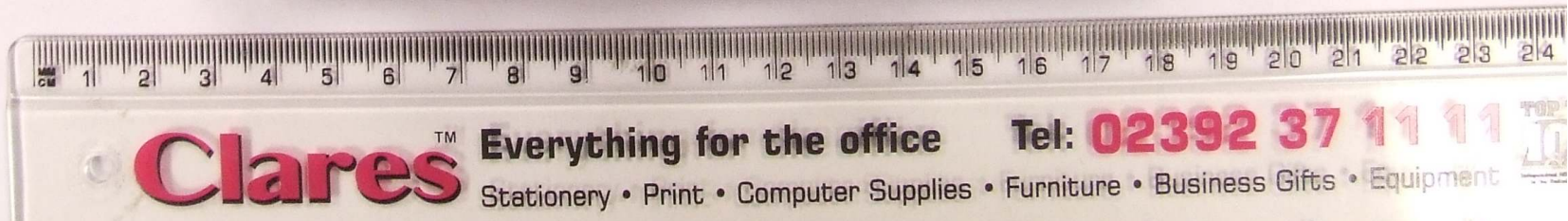
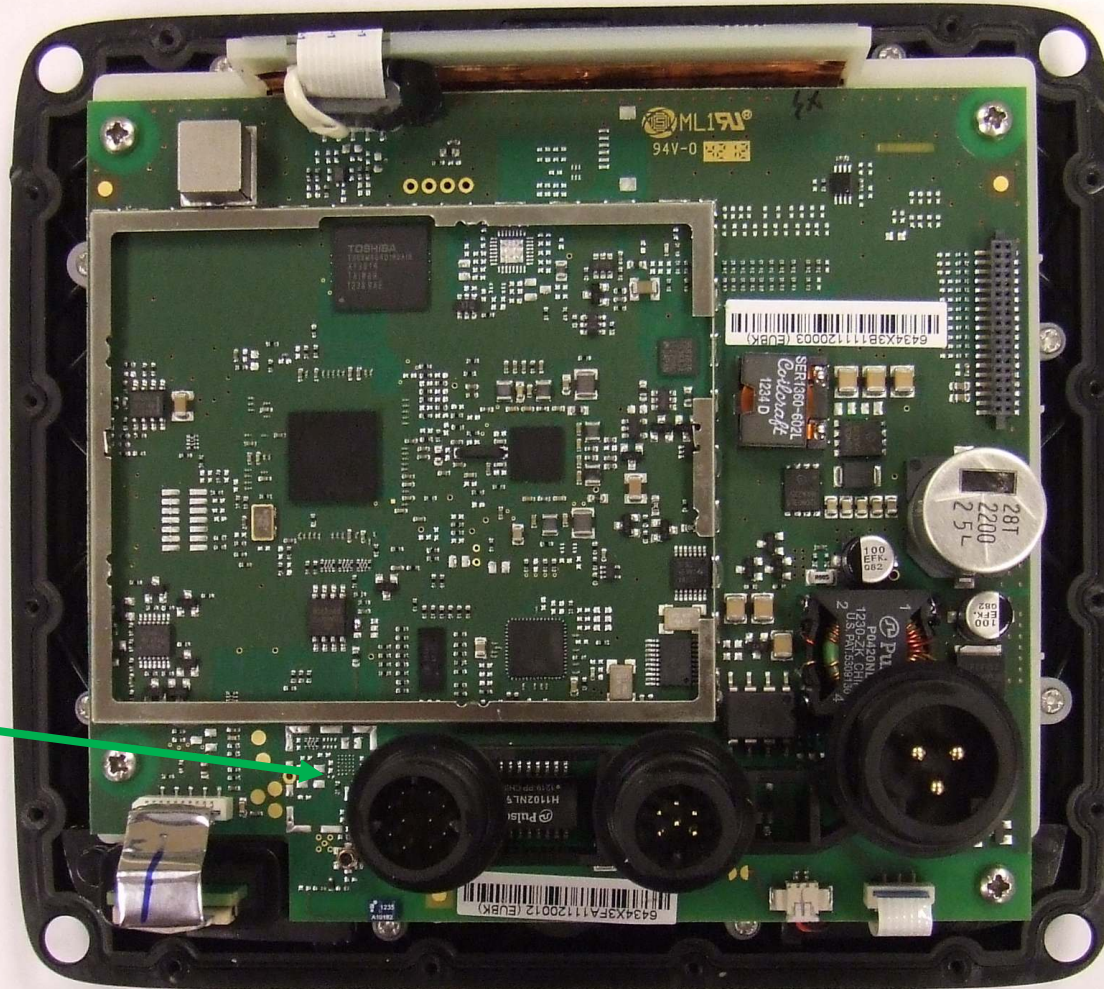
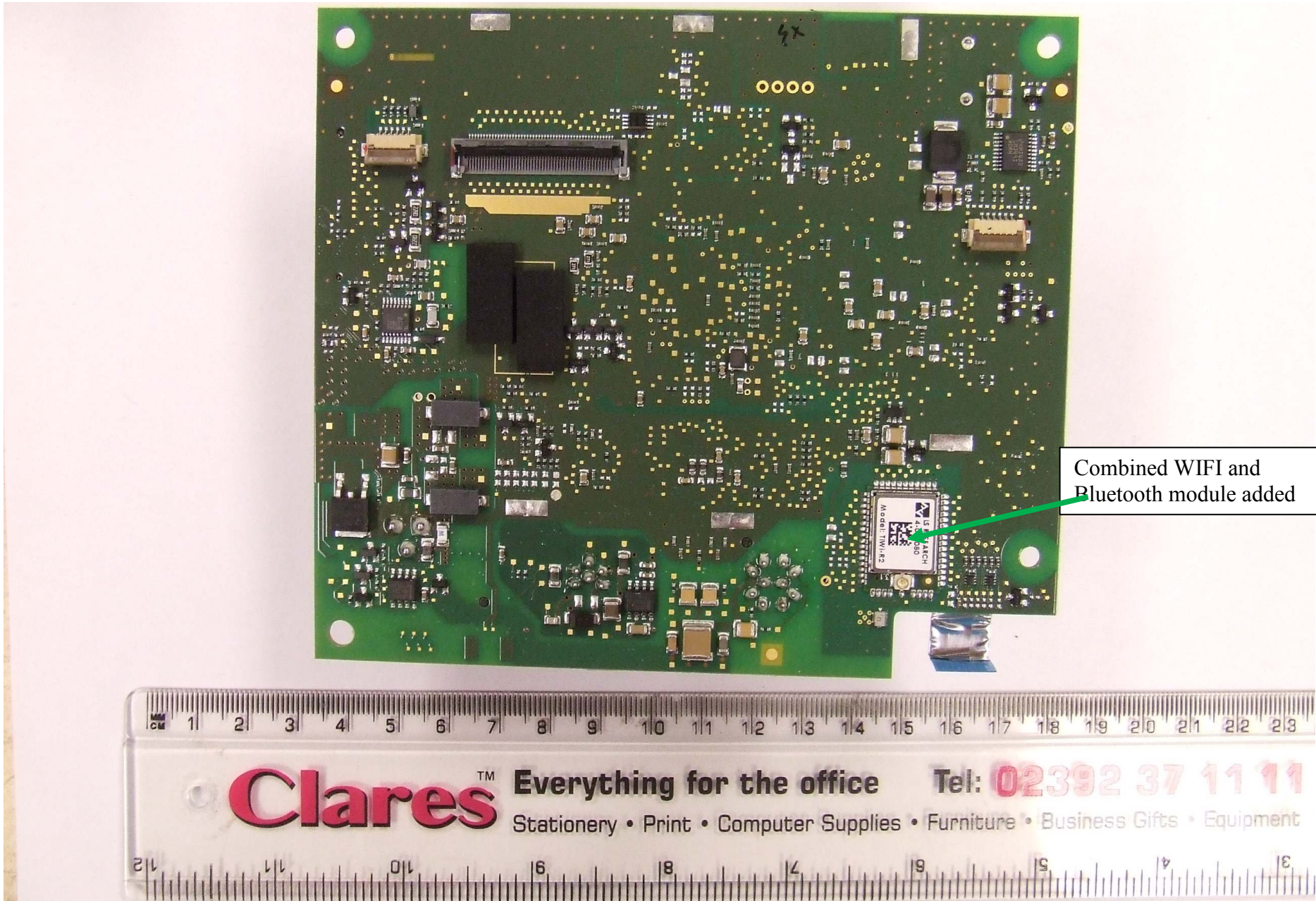


Figure 14 - CPU Wifi Version (top, CAN's removed)



Combined WIFI and Bluetooth module added

Figure 15 - CPU WiFi Version (bottom)

Bluetooth module added

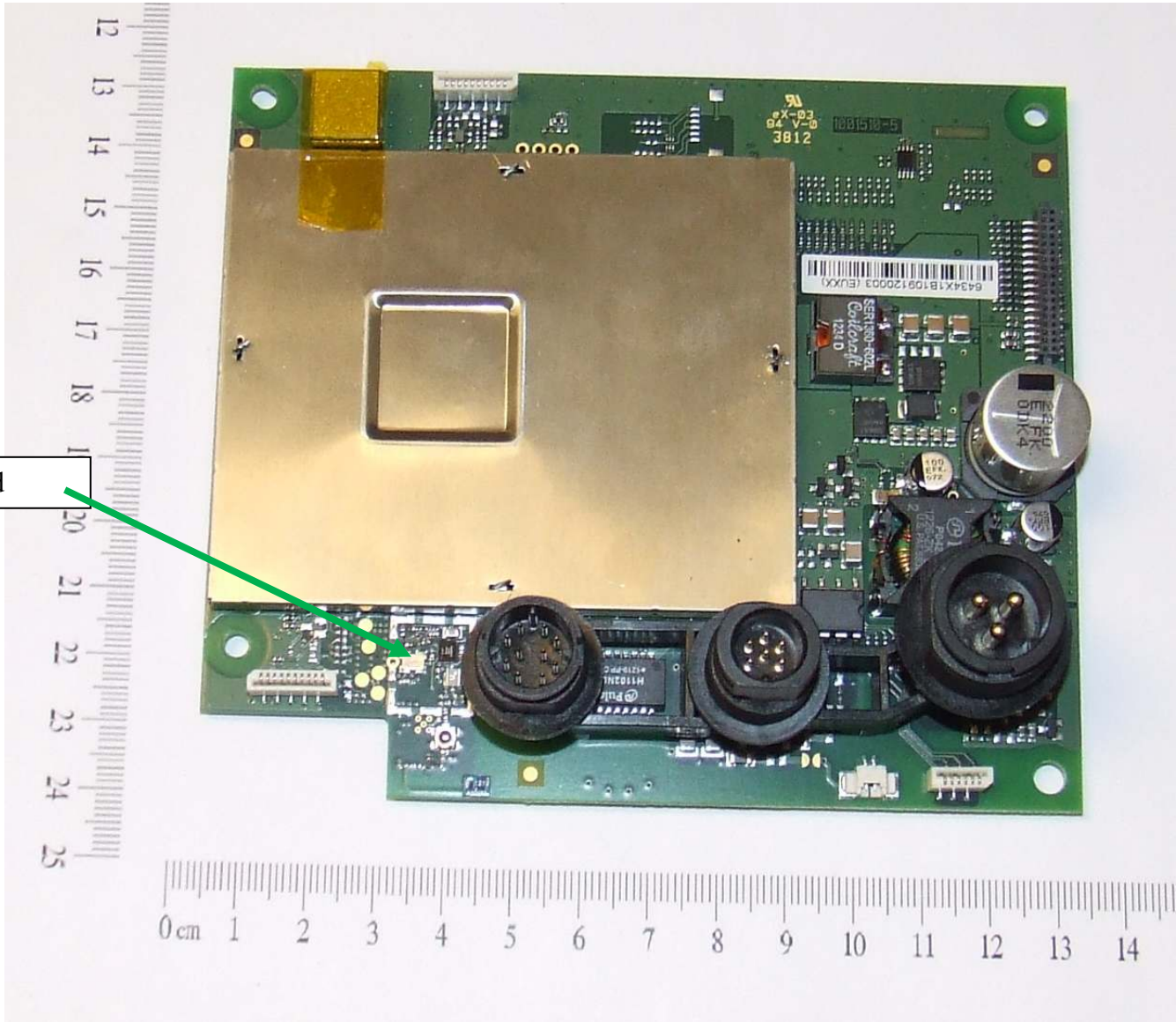


Figure 16 - CPU Bluetooth Version

Bluetooth module added

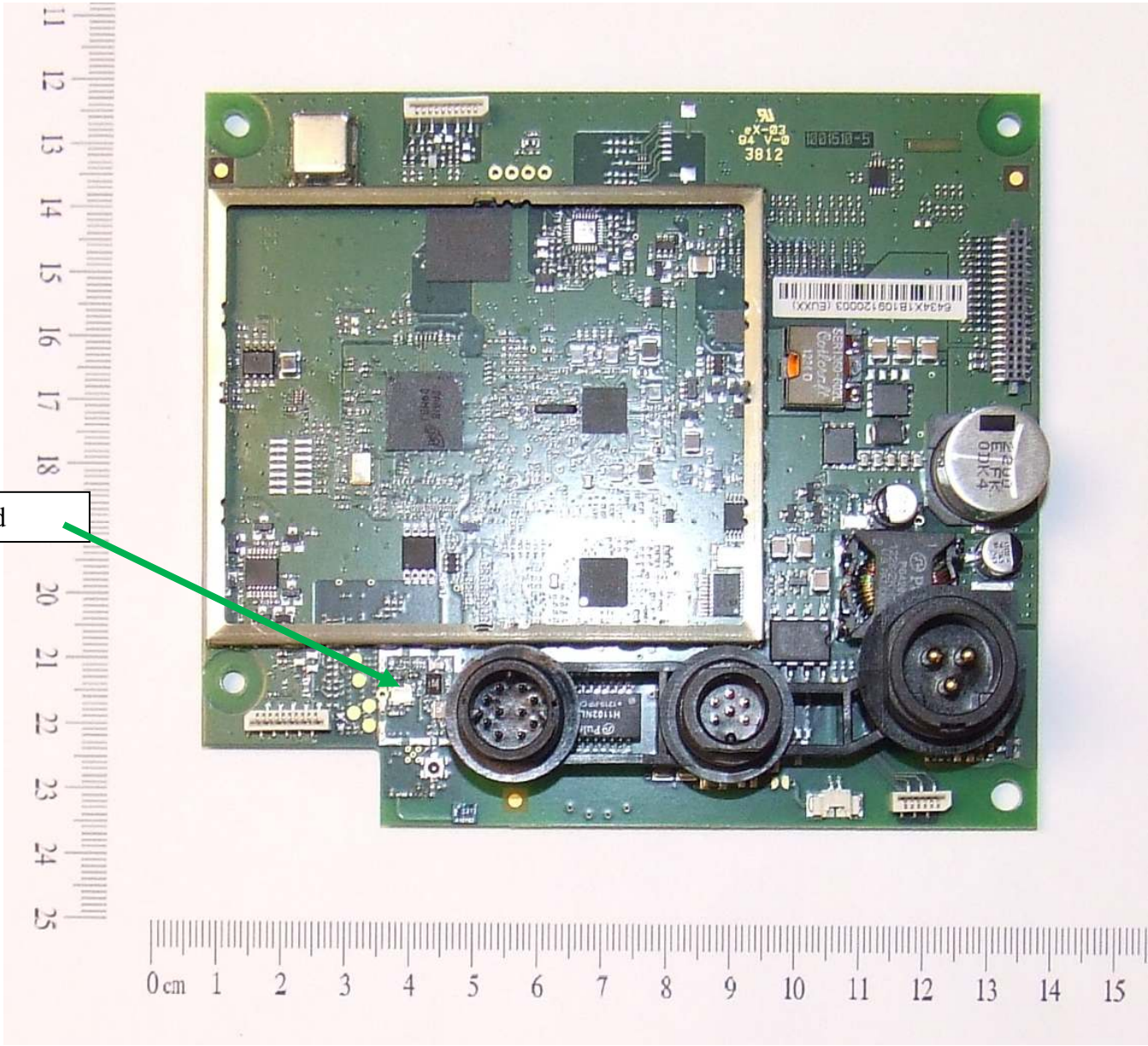
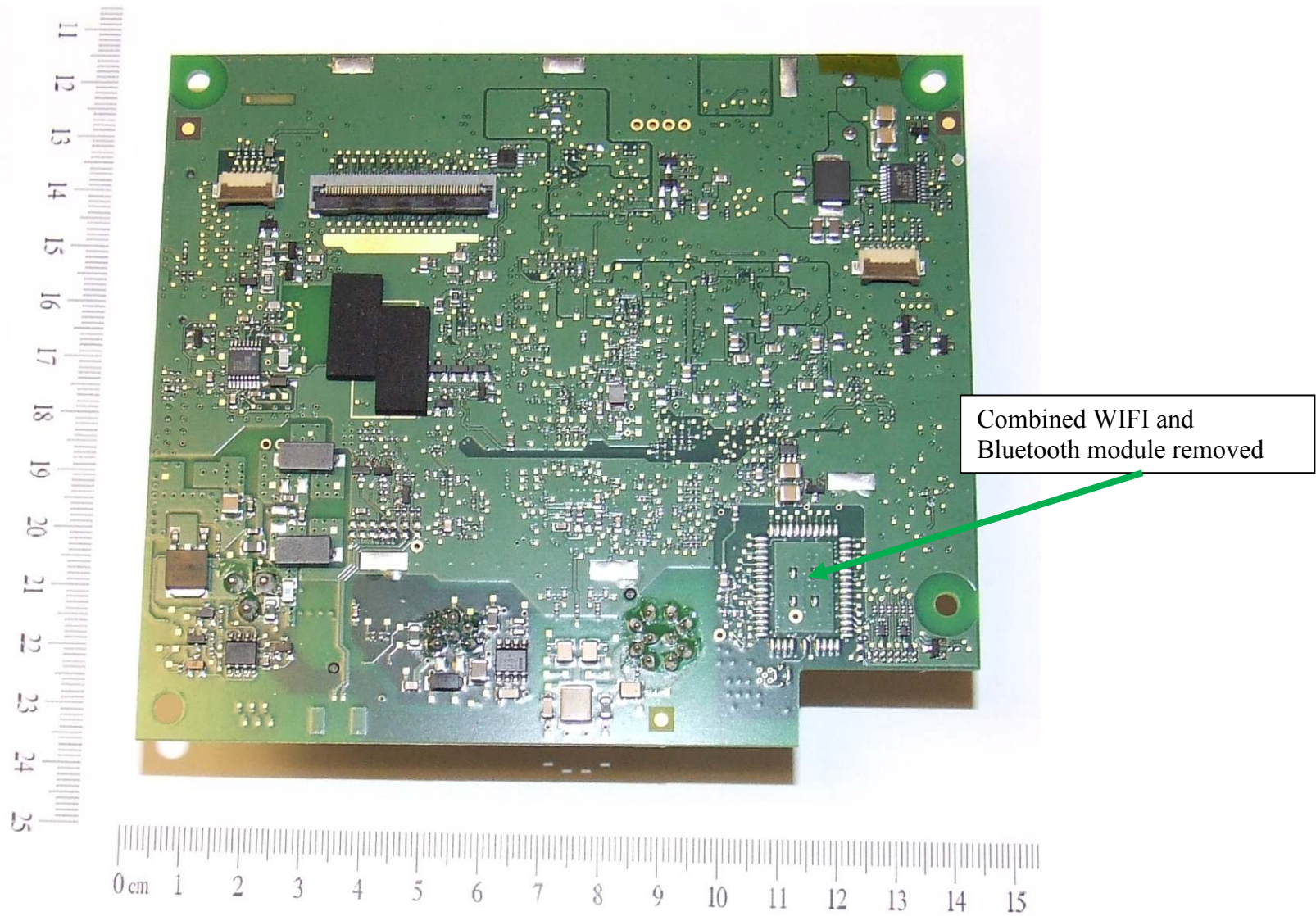


Figure 17 - CPU Bluetooth Version (lid removed)



**Figure 18 - CPU Bluetooth Version (bottom)**

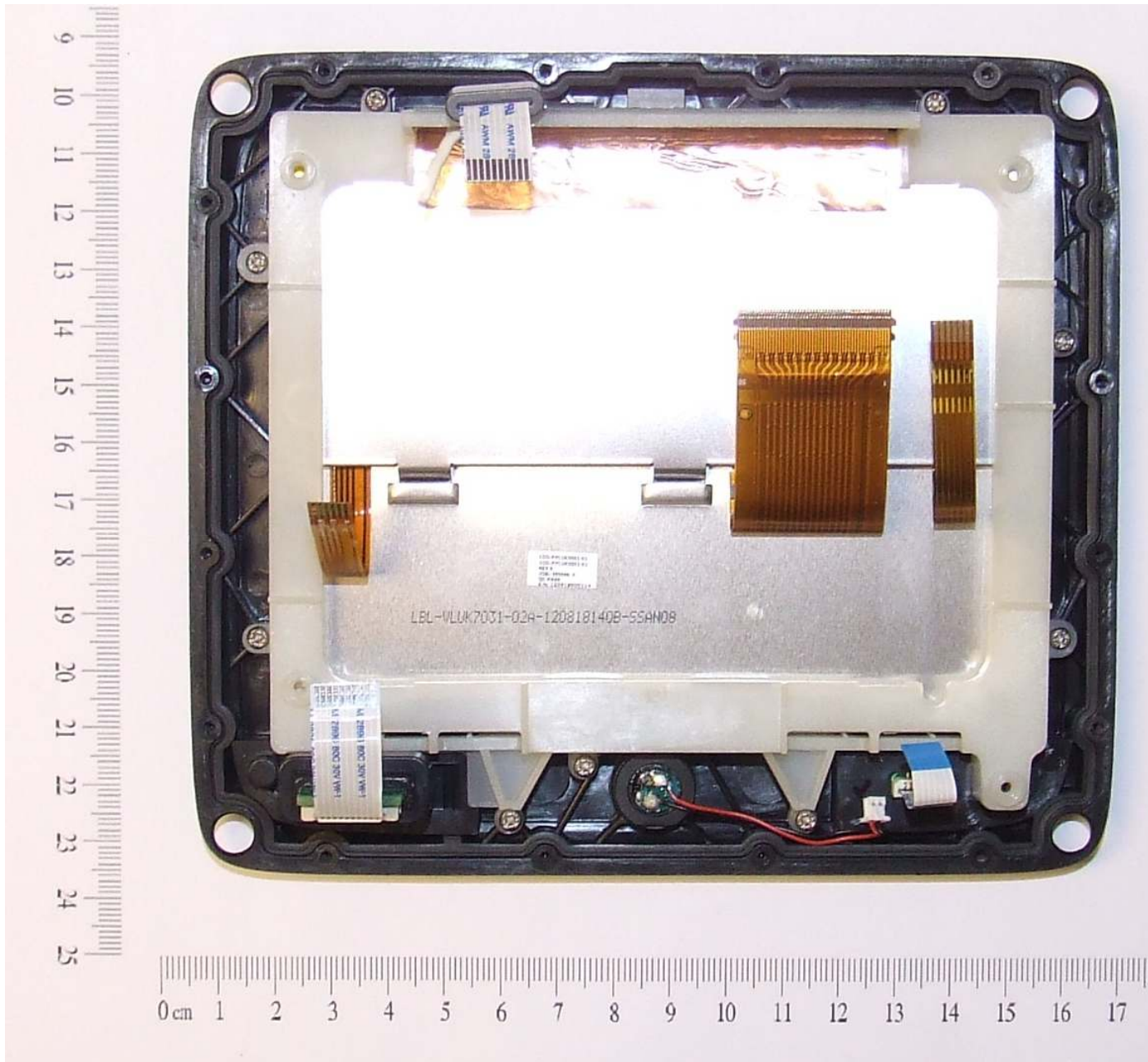
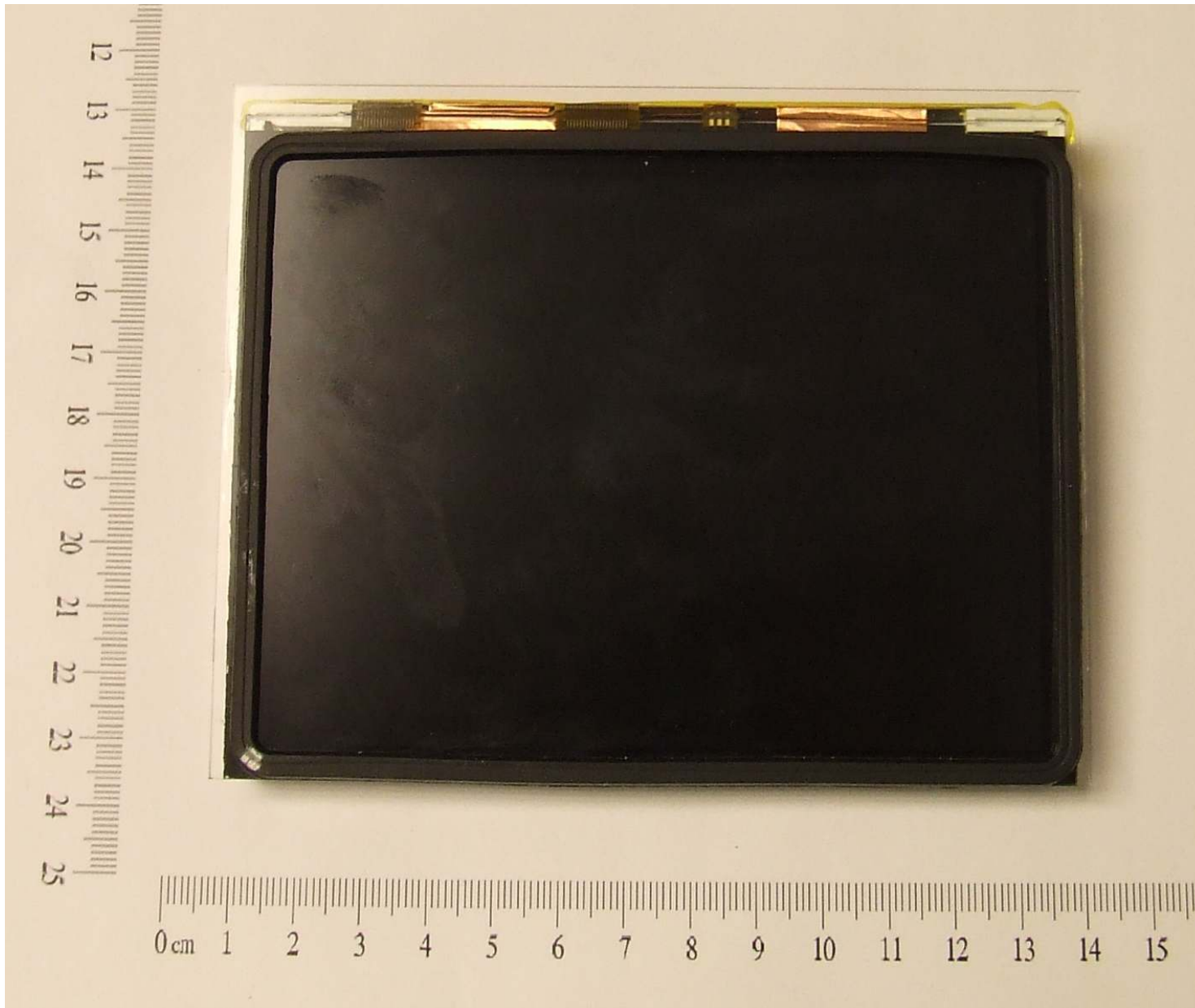
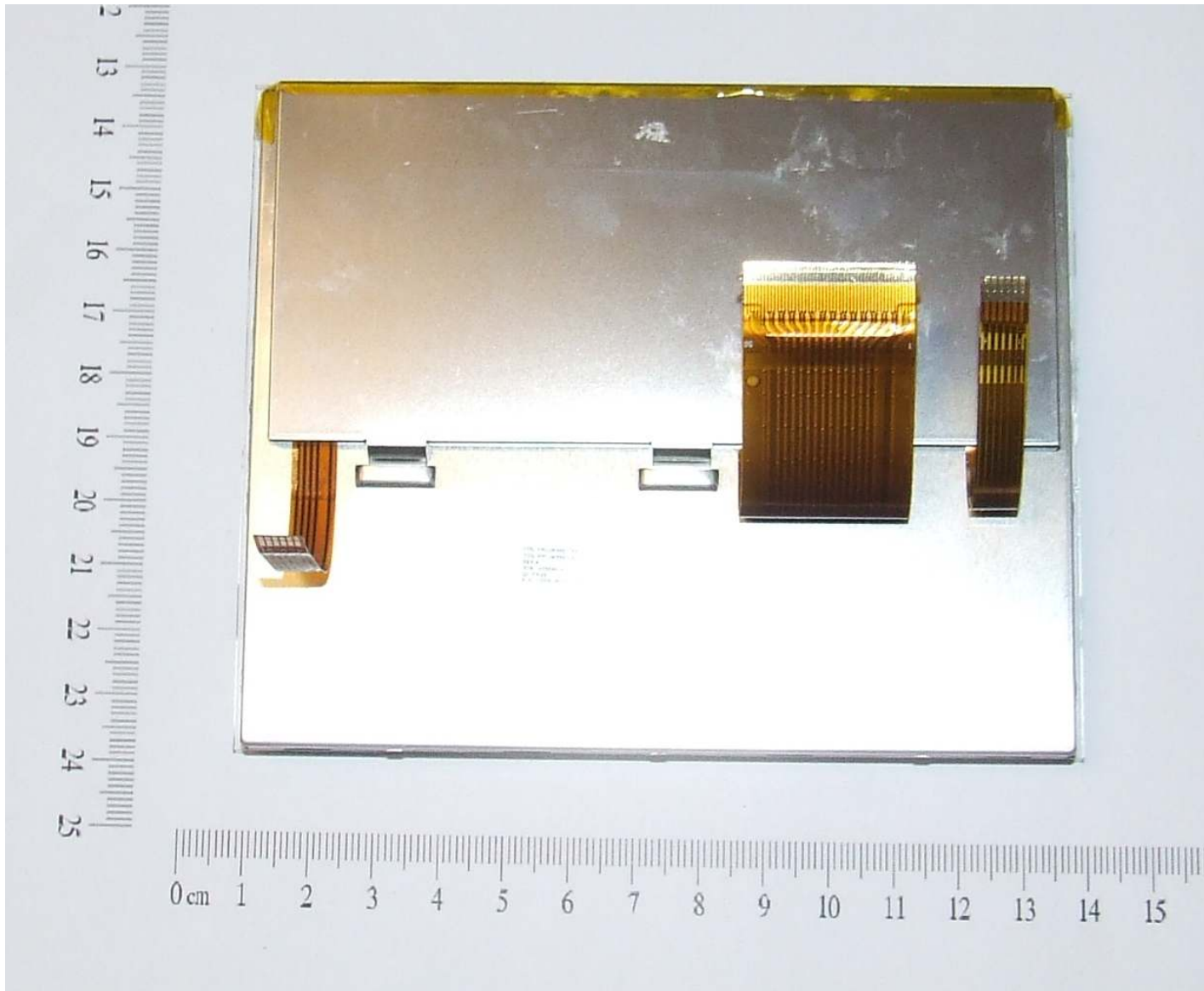


Figure 19 - Rear of LCD (CPU PCB removed)

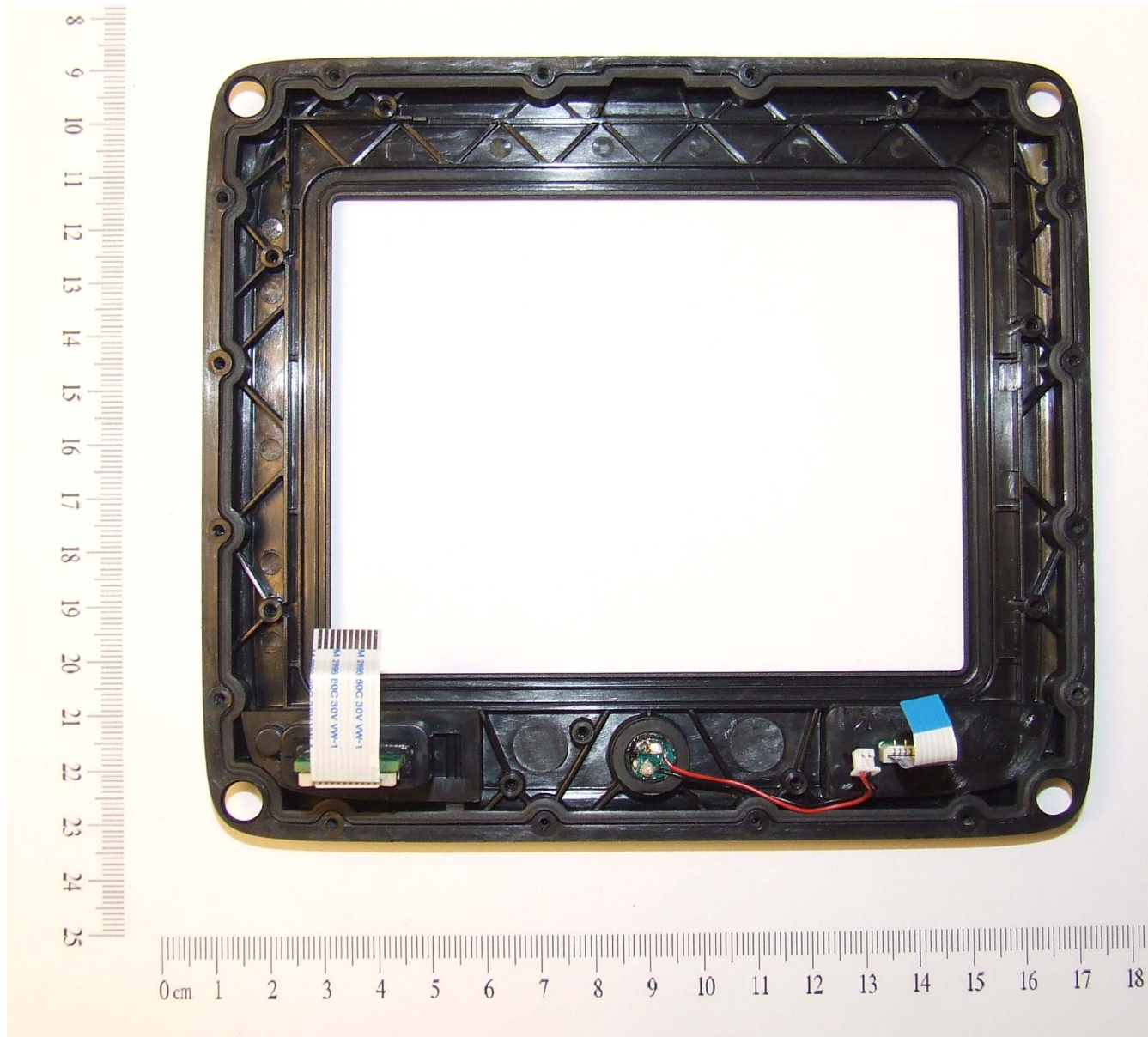


**Figure 20 - Front of LCD**

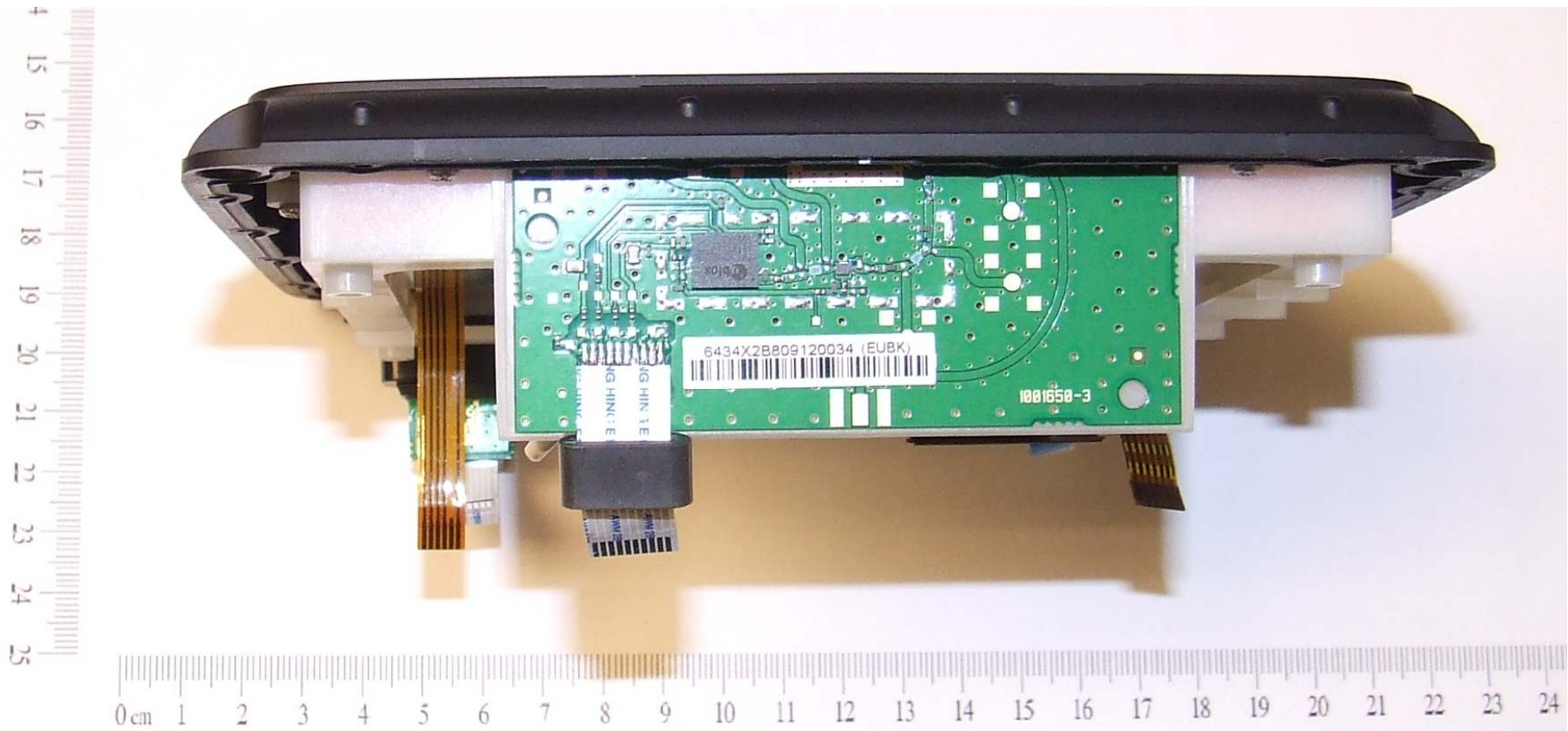


**Figure 21 - Rear of LCD**





**Figure 22 - Rear of front facia**



**Figure 23 - GPS PCB (fitted)**

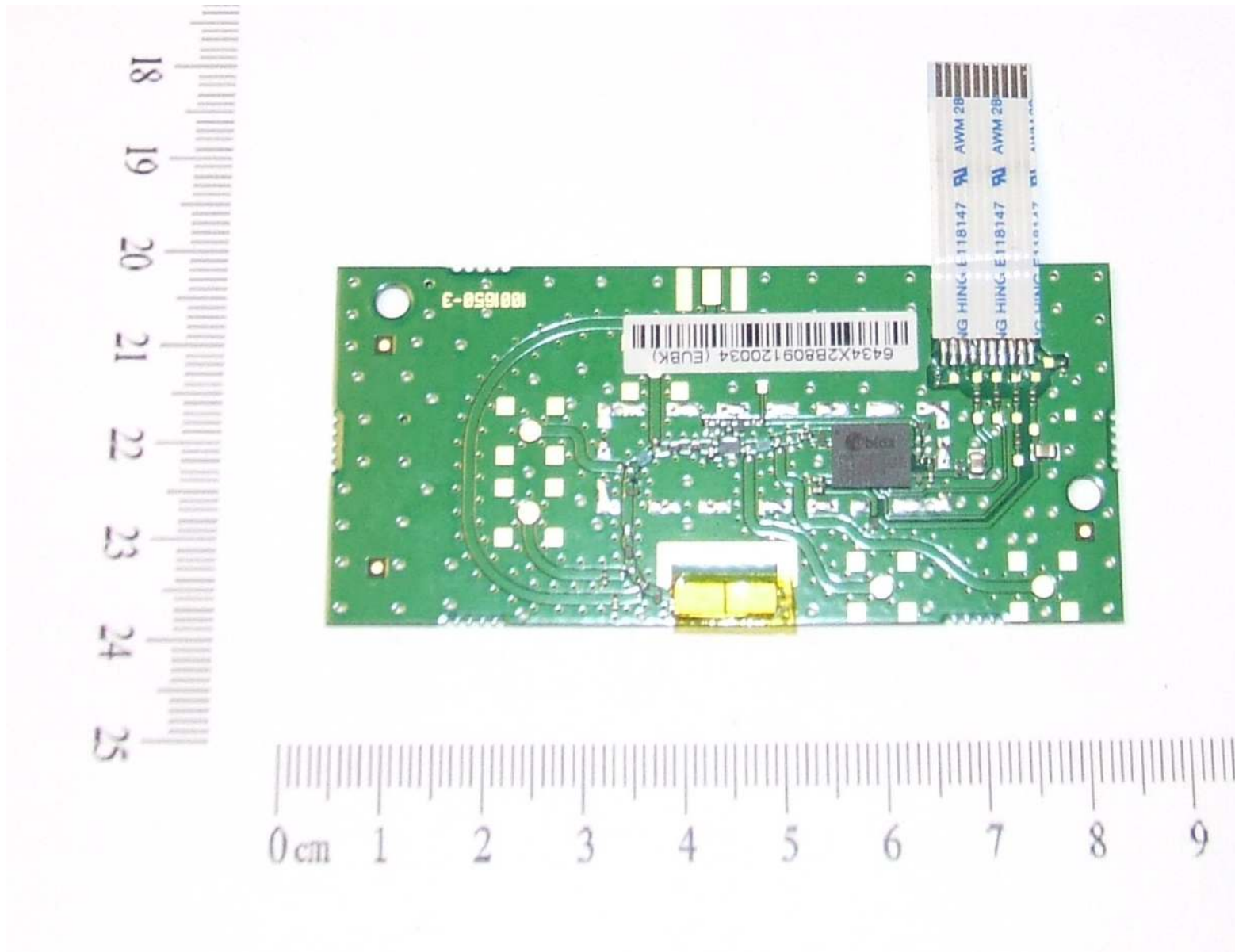


Figure 24 - GPS PCB (top)

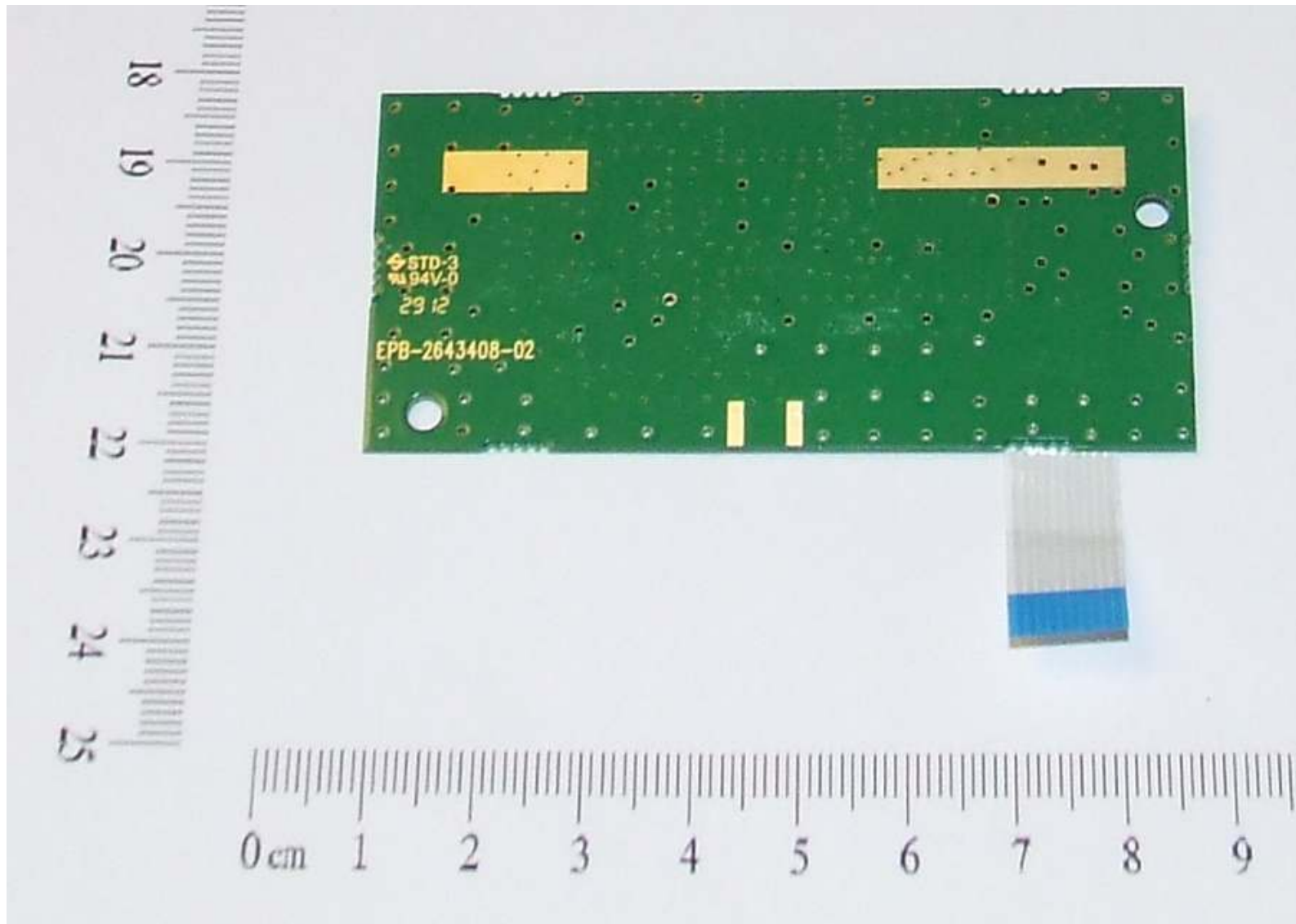


Figure 25 - GPS PCB (bottom)



Figure 26 - Micro SD Reader (top)

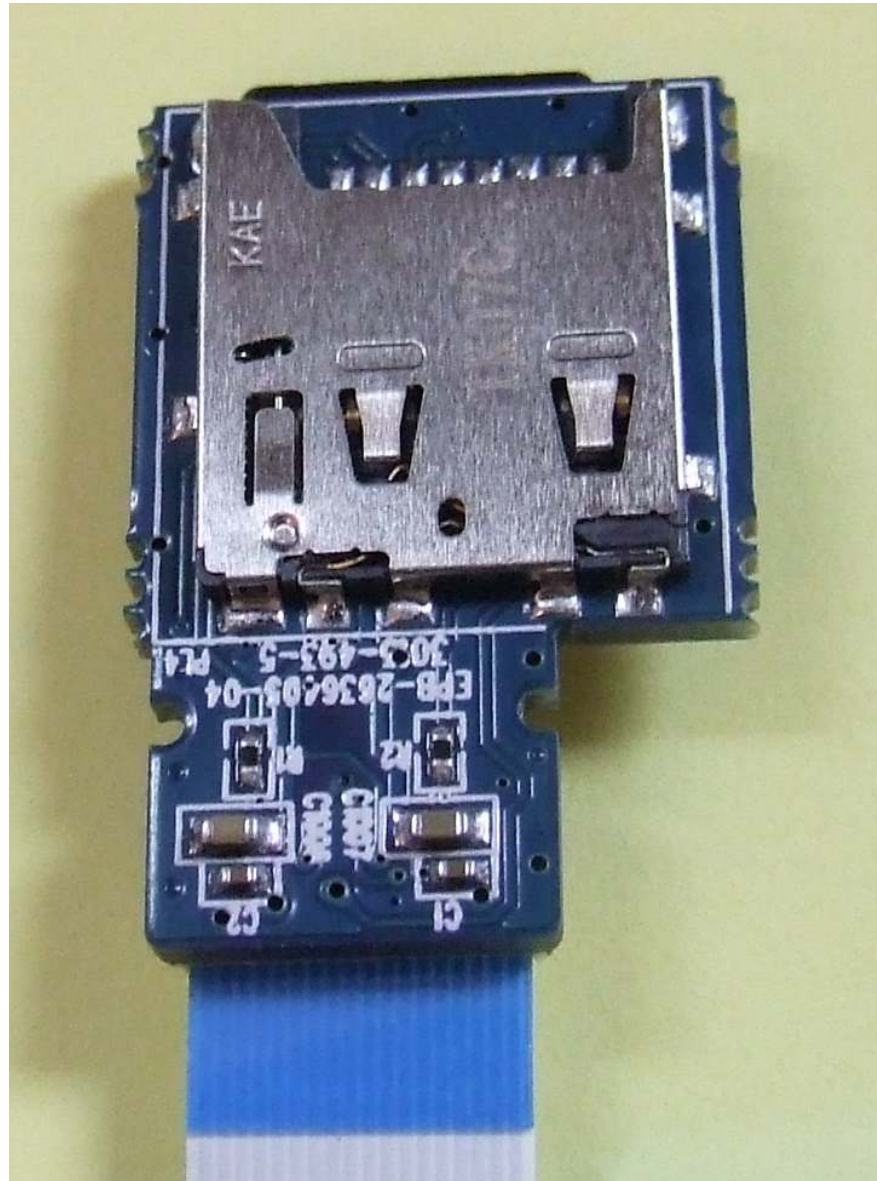


Figure 27 - Micro SD Reader (bottom)