



A6 WIFI multi-function displays

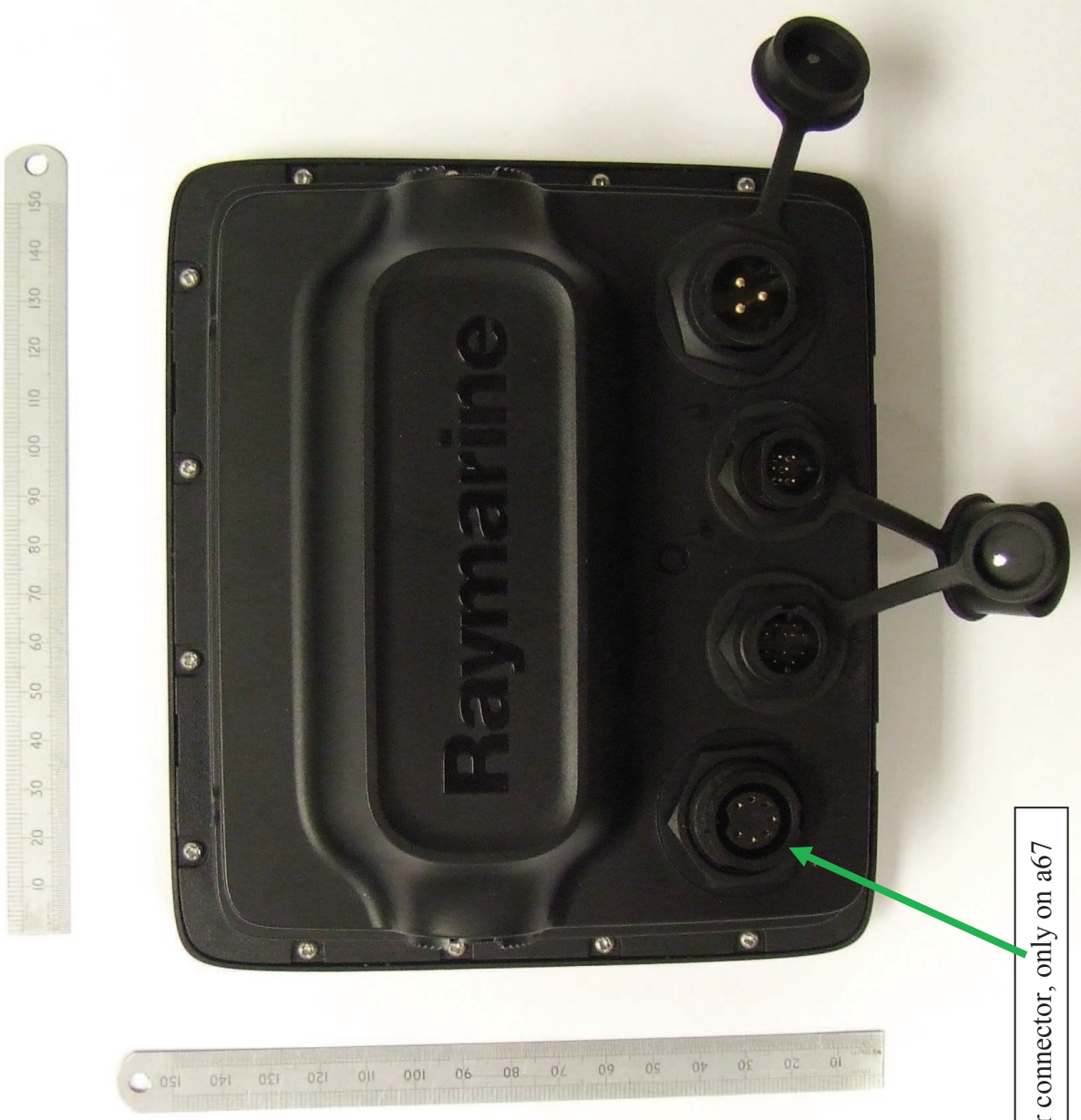
Internal Photographs

INDEX

| | |
|---|----|
| Figure 1 - Bezel removed & Micro SD Reader door open..... | 3 |
| Figure 2 - Rear of A6..... | 4 |
| Figure 3 - Inside rear of a65 (no Sonar connector)..... | 5 |
| Figure 4 - Inside rear of a67 (for Sonar connector)..... | 6 |
| Figure 5 - Inside of A6 rear casing showing Sonar PCB (a67 only)..... | 7 |
| Figure 6 – a67 Sonar PCB (top)..... | 8 |
| Figure 7 – a67 Sonar PCB (bottom)..... | 9 |
| Figure 8 - CPU PCB (top)..... | 10 |
| Figure 9 - CPU (top, CAN's removed)..... | 11 |
| Figure 10 - CPU (bottom)..... | 12 |
| Figure 11 - Rear of LCD (CPU PCB removed)..... | 13 |
| Figure 12 - Front of LCD..... | 14 |
| Figure 13 - Rear of LCD..... | 15 |
| Figure 14 - Rear of front fascia..... | 16 |
| Figure 15 - GPS PCB (fitted)..... | 17 |
| Figure 16 - GPS PCB (top)..... | 18 |
| Figure 17 - GPS PCB (bottom)..... | 19 |
| Figure 18 - Micro SD Reader (top)..... | 20 |
| Figure 19 - Micro SD Reader (bottom)..... | 21 |



Figure 1 - Bezel removed & Micro SD Reader door open



Sonar connector, only on a67

Figure 2 - Rear of A6



Figure 3 - Inside rear of a65 (no Sonar connector)



Figure 4 - Inside rear of a67 (for Sonar connector)

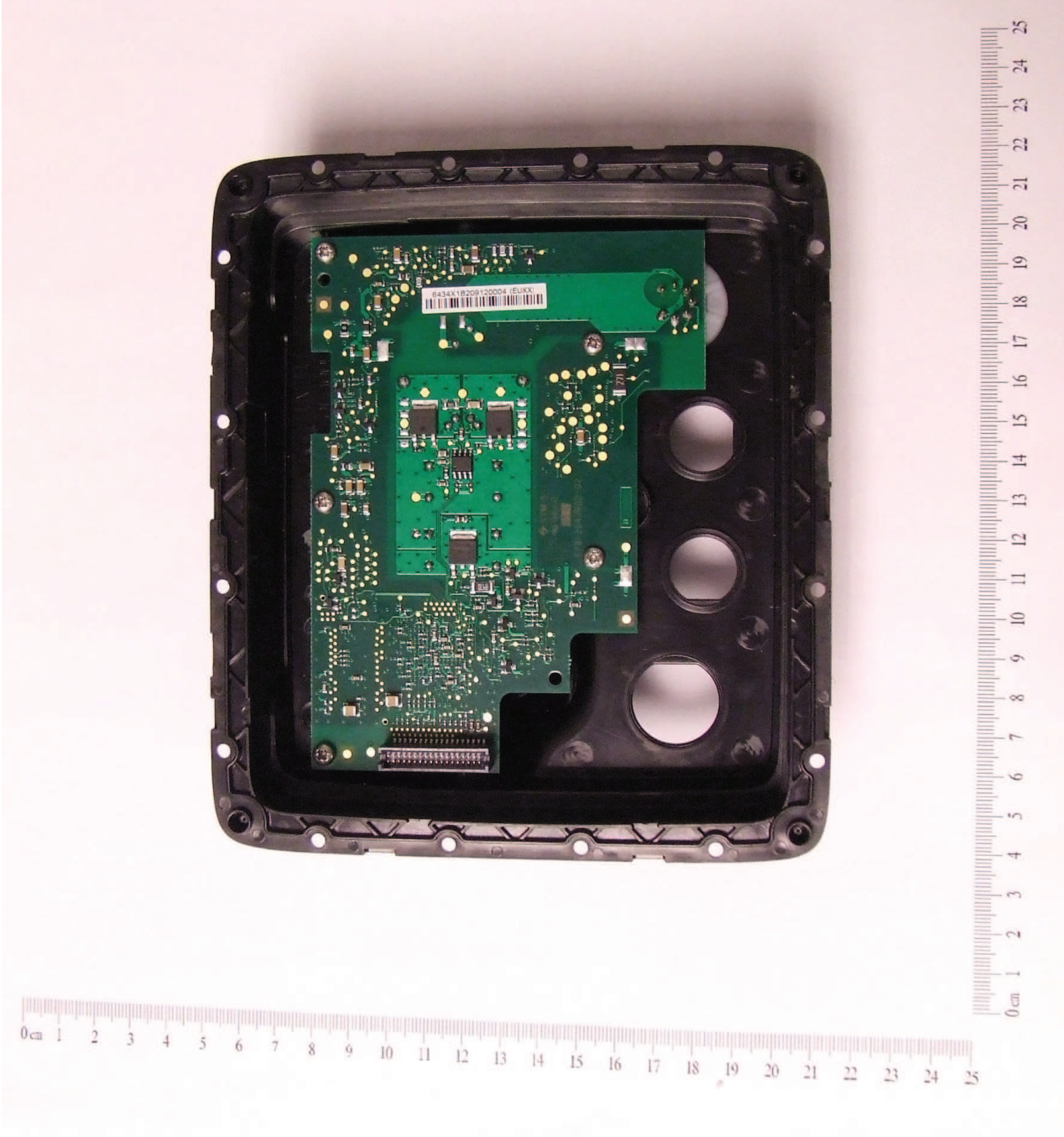


Figure 5 - Inside of A6 rear casing showing Sonar PCB (a67 only)

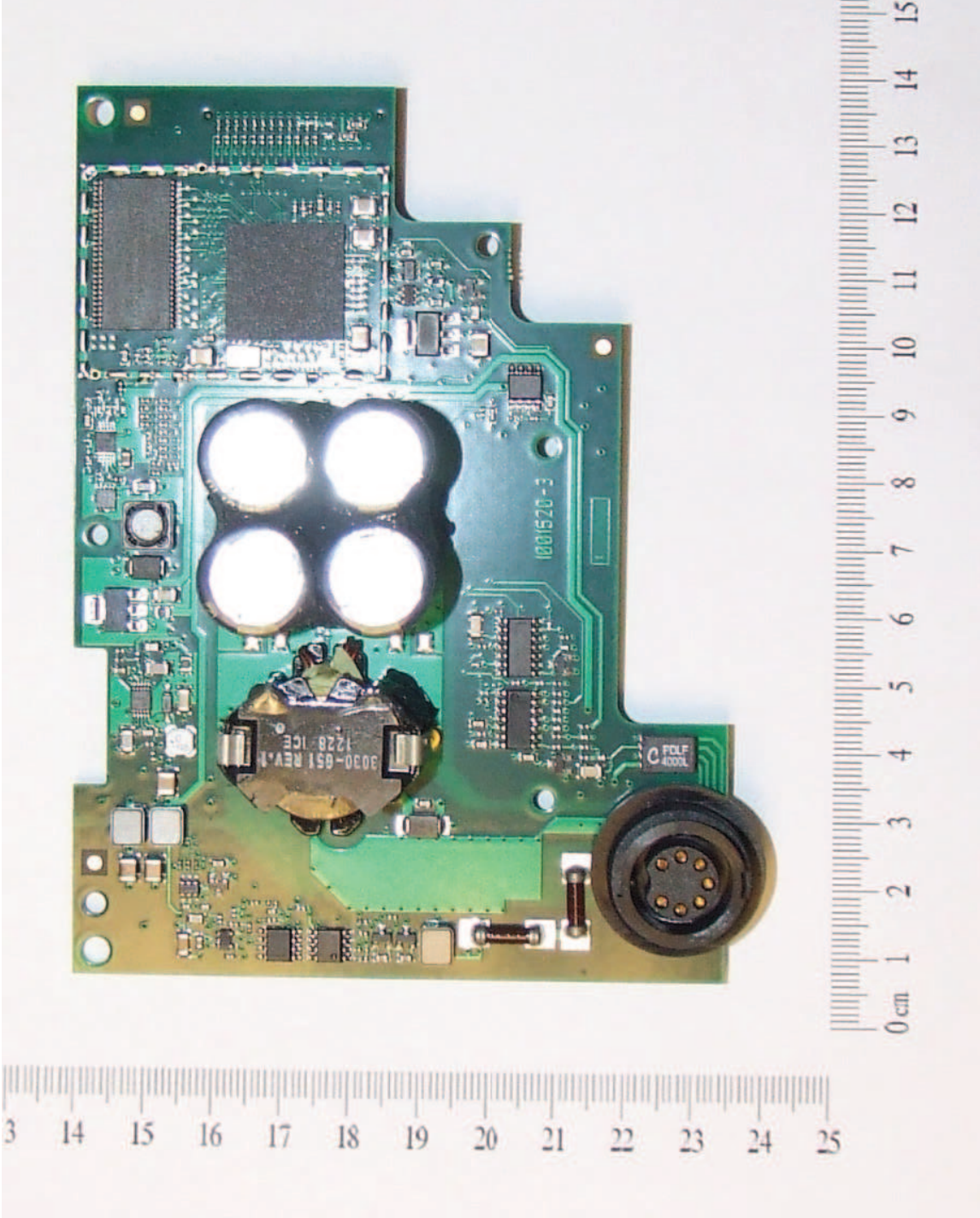


Figure 6 – a67 Sonar PCB (top)

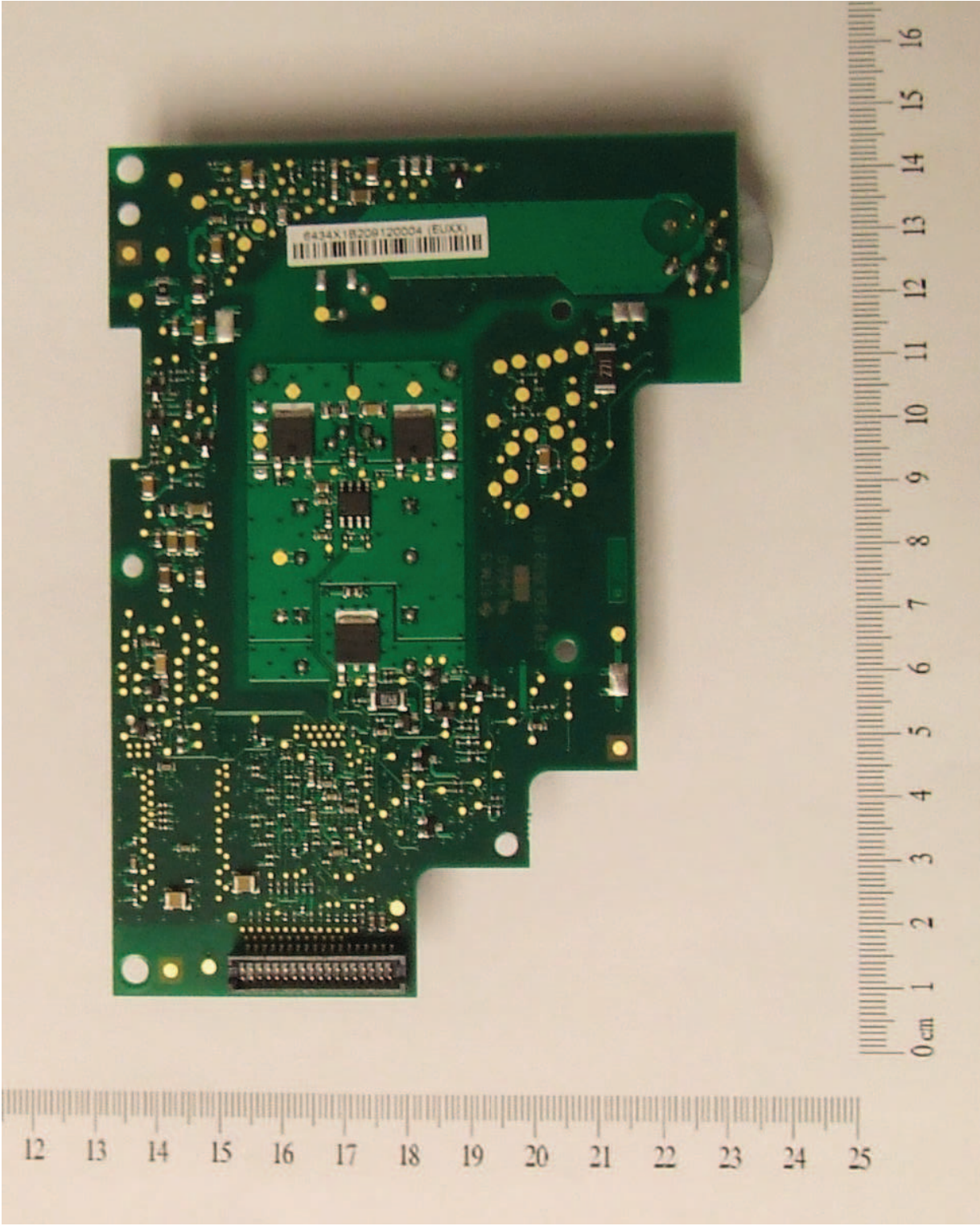


Figure 7 – a67 Sonar PCB (bottom)



Bluetooth Circuit removed

Figure 8 - CPU PCB (top)