



**e165 multi-function displays**

**Internal Photographs**

## INDEX

Figure 1 – e165 - keypad and facia removed .....	3
Figure 2 - Rear of e165 .....	4
Figure 3 - Inside of e165 rear casting showing connector board .....	5
Figure 4 - Inside of e165 rear casting .....	6
Figure 5 - connector side of connector board .....	7
Figure 6 - Rear of connector PCB .....	8
Figure 8 - Rear of e165 LCD with heatsink fitted .....	9
Figure 9 - Rear of e165 LCD with heatsink and location of CPU board .....	10
Figure 10 - Rear of CPU PCB .....	11
Figure 11 - Top of CPU PCB .....	12
Figure 12 - Top of CPU PCB - cans removed .....	13
Figure 15 - Keyboard Top .....	14
Figure 16 - Keyboard bottom .....	15
Figure 17 - uSD Top .....	16
Figure 18 - uSD Bottom .....	17
Figure 19 – e165 unit parts (1) .....	18

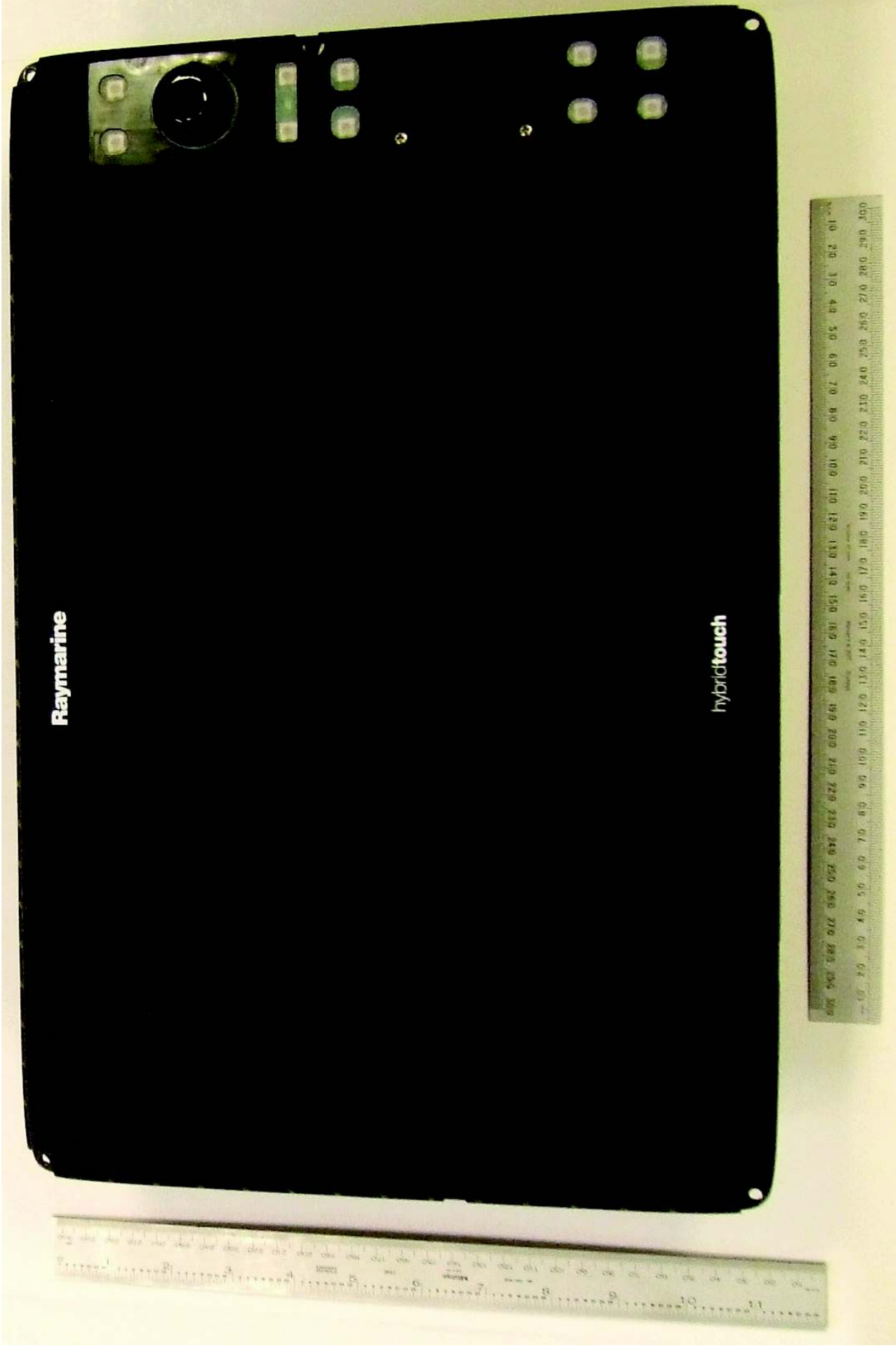


Figure 1 – e165 - keypad and fascia removed

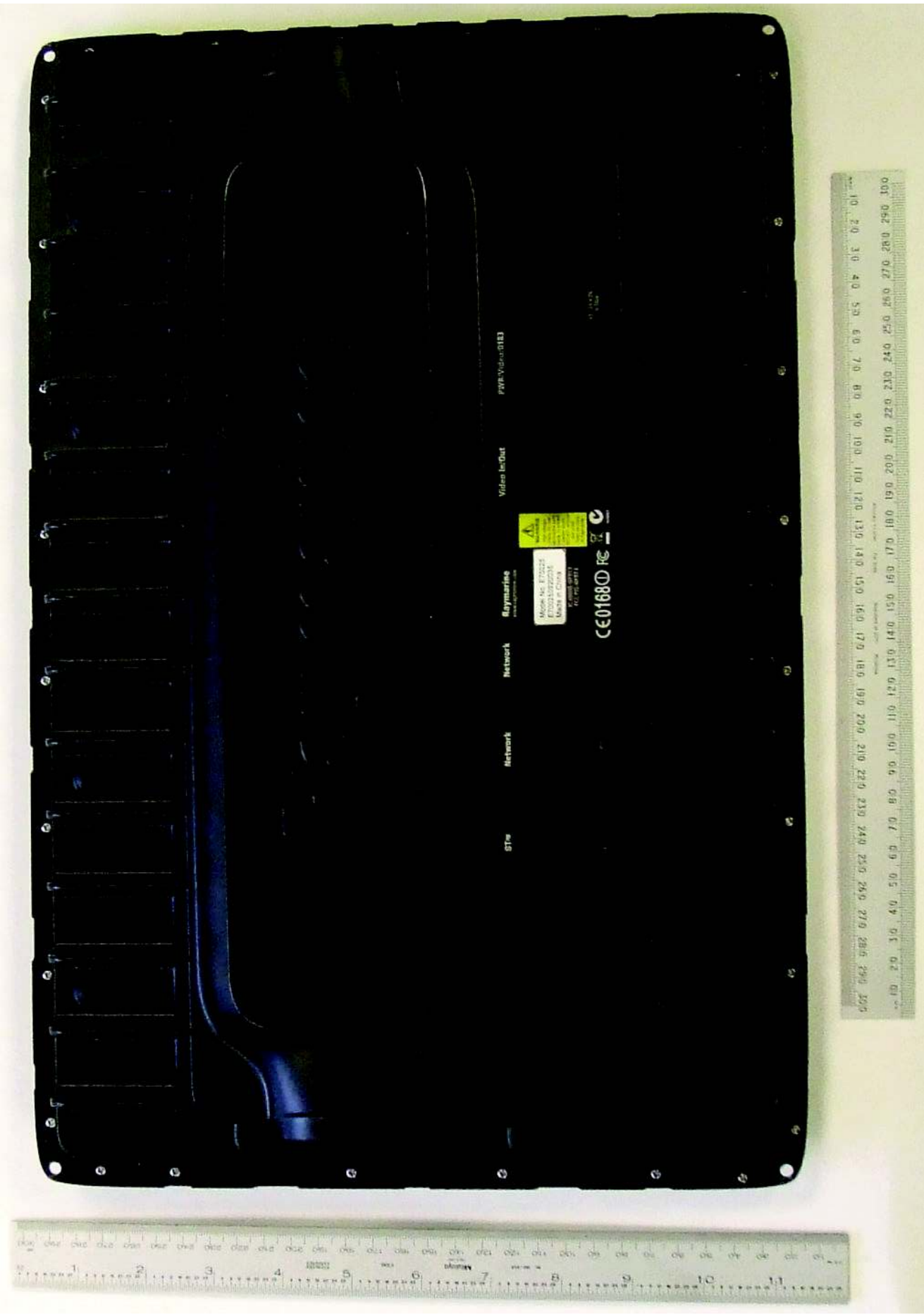


Figure 2 - Rear of e165

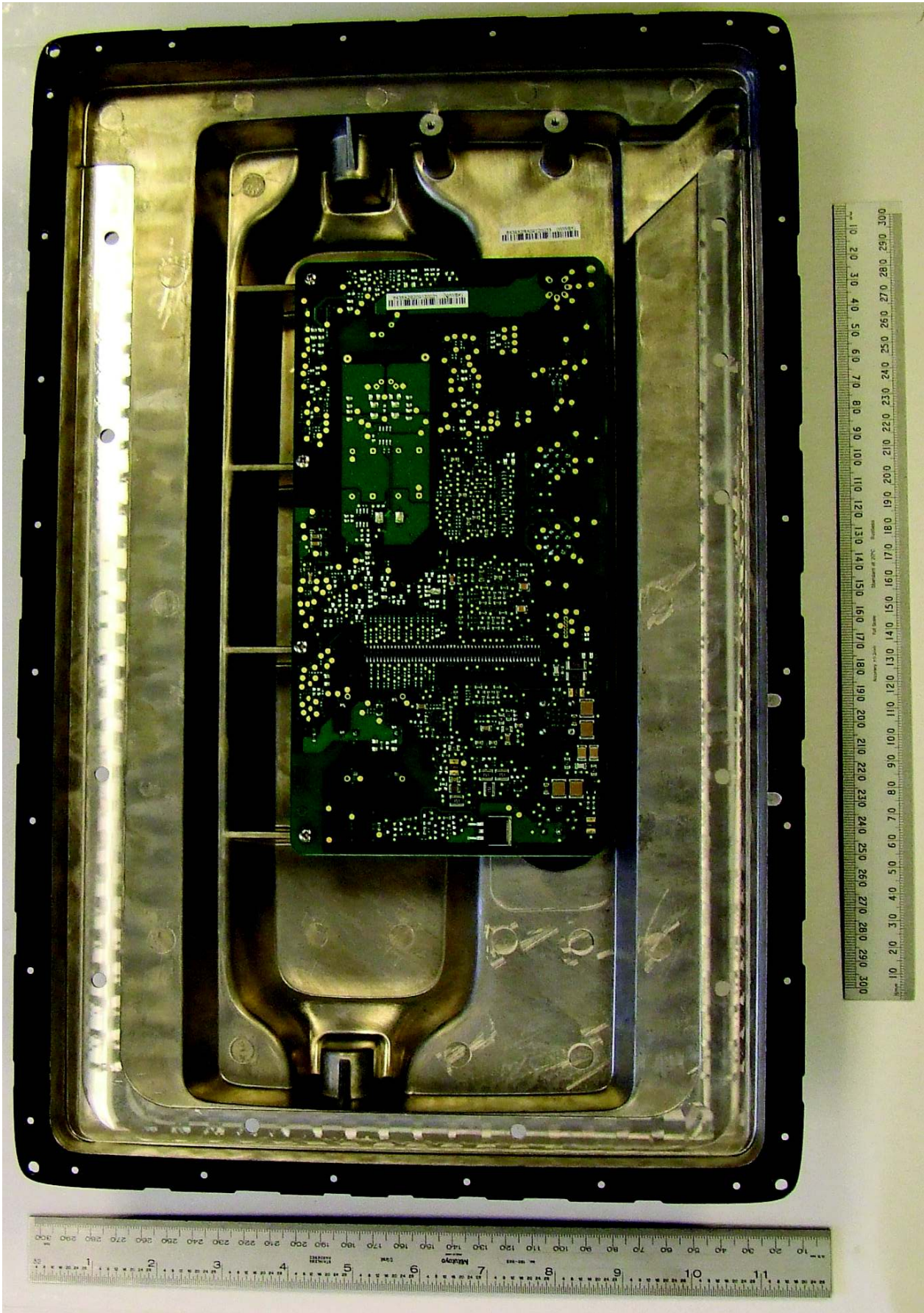


Figure 3 - Inside of e165 rear casting showing connector board

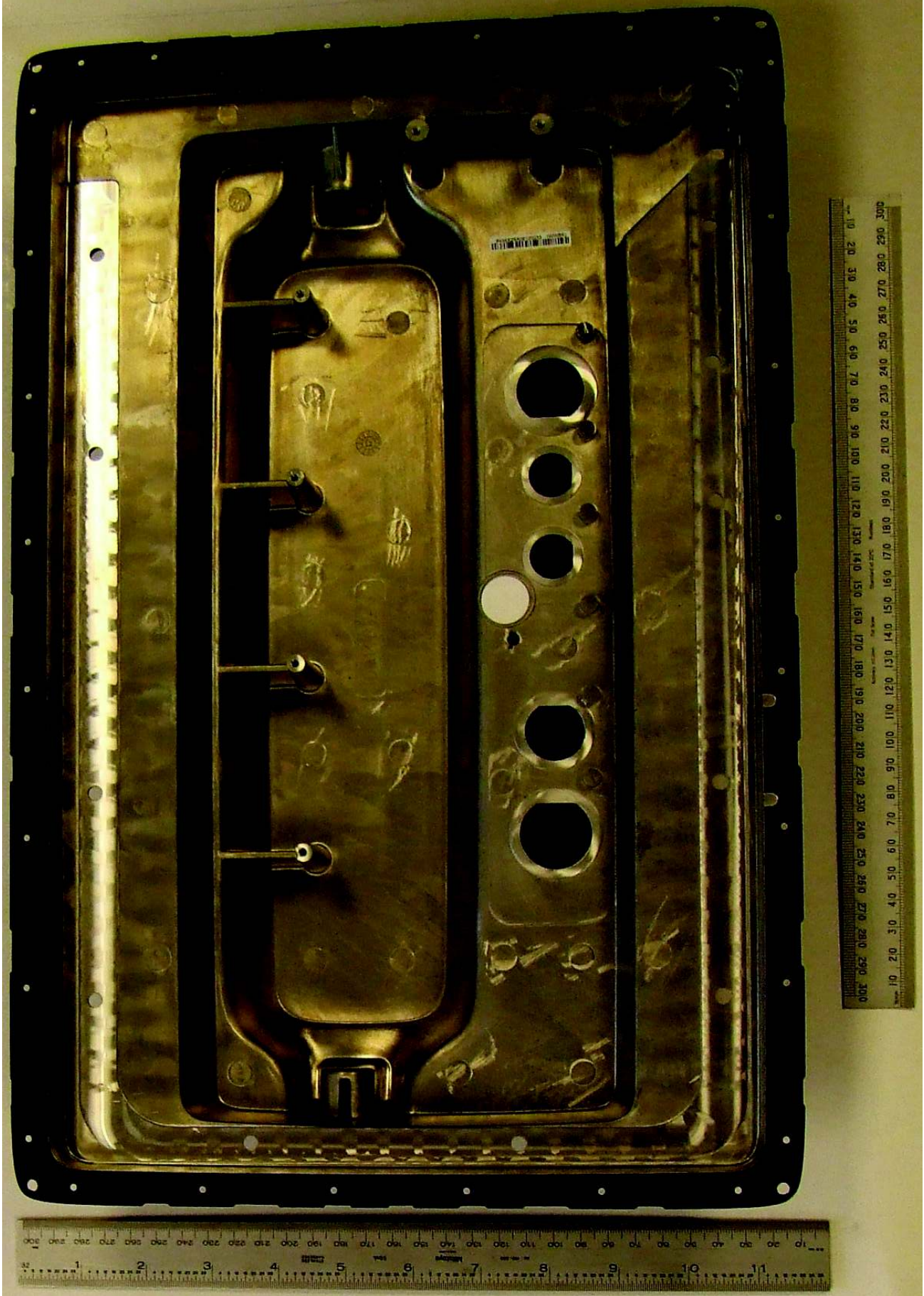


Figure 4 - inside of e165 rear casting

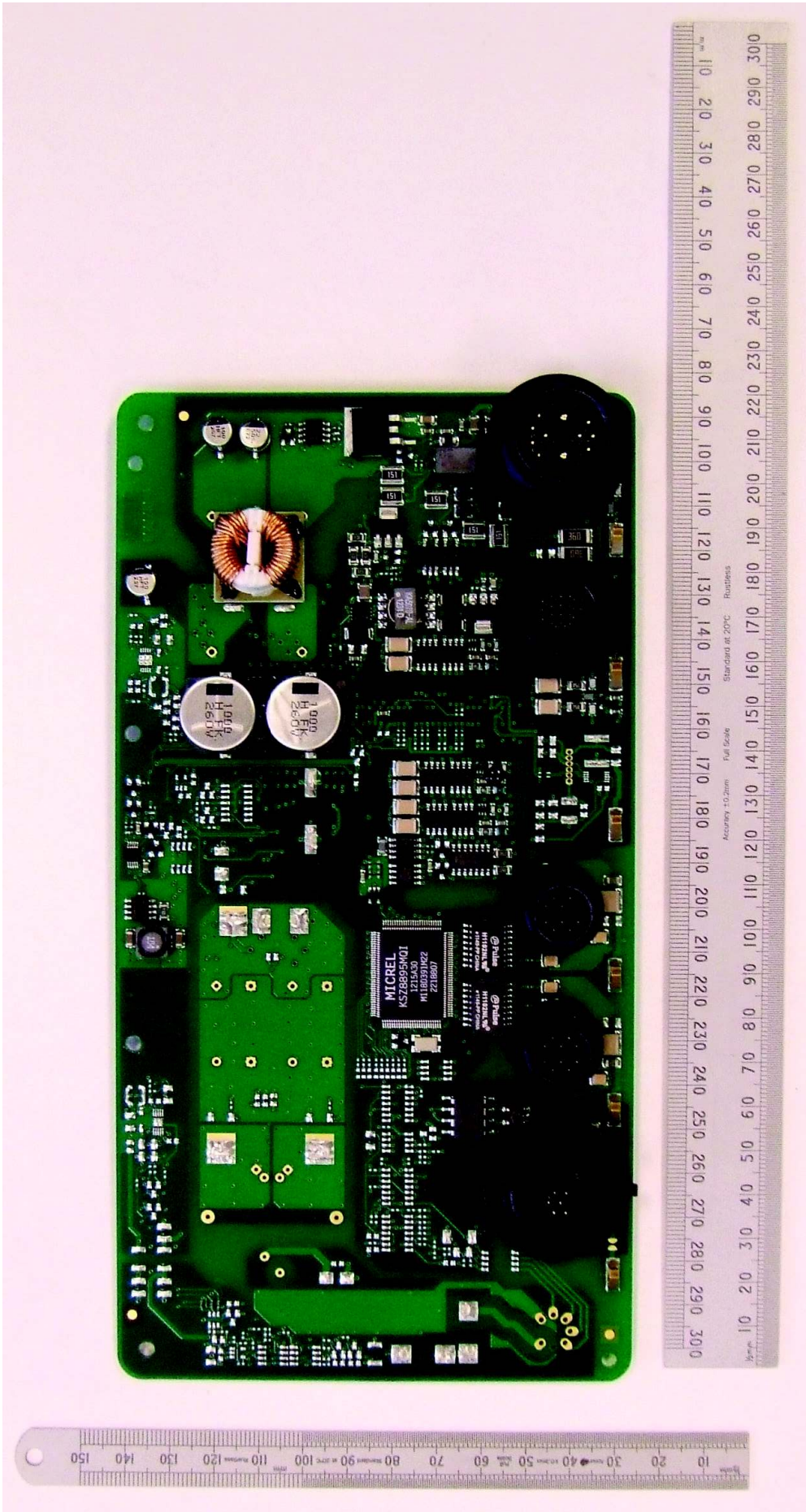
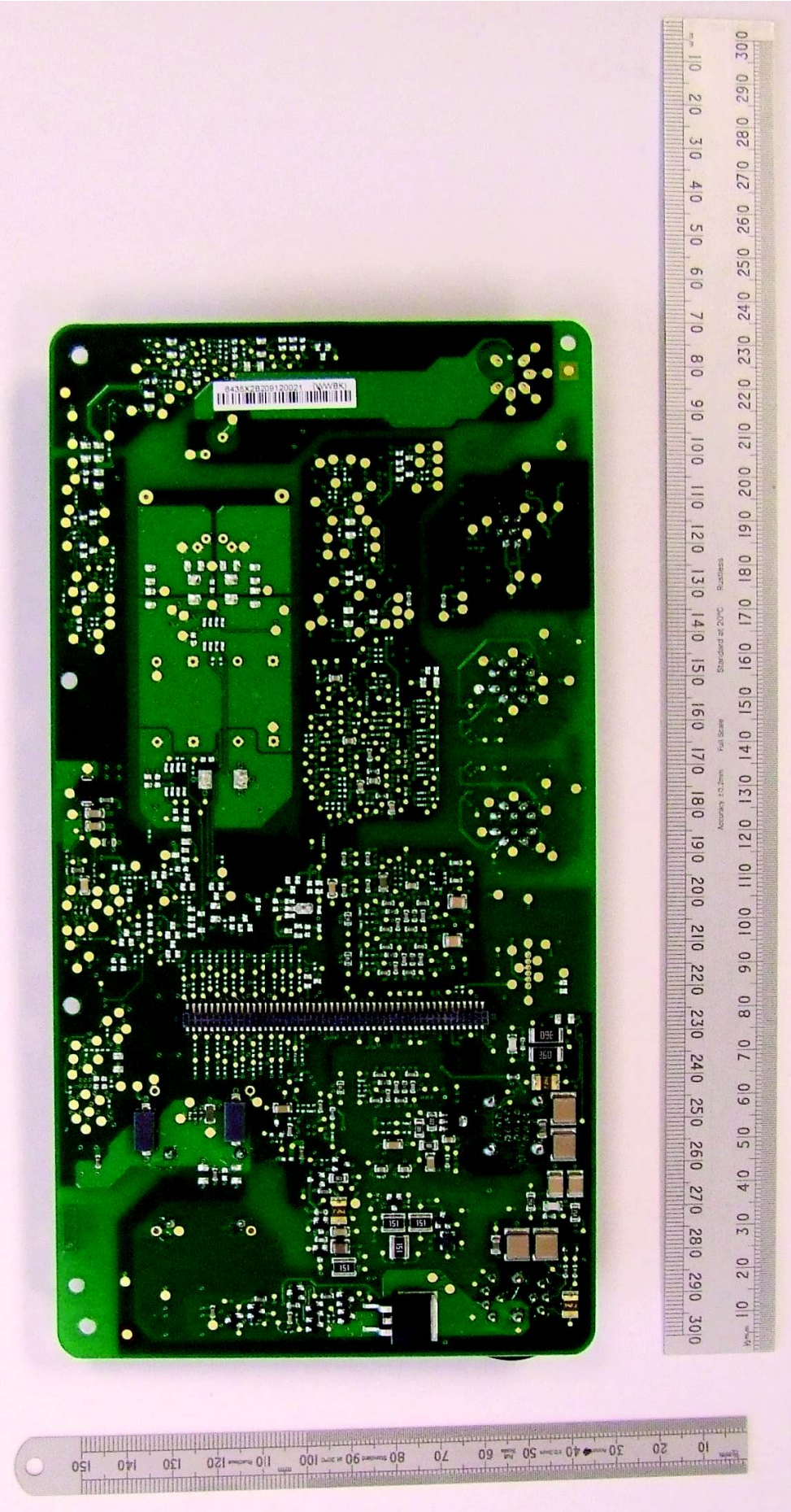


Figure 5 - connector side of connector board



**Figure 6 - Rear of connector PCB**



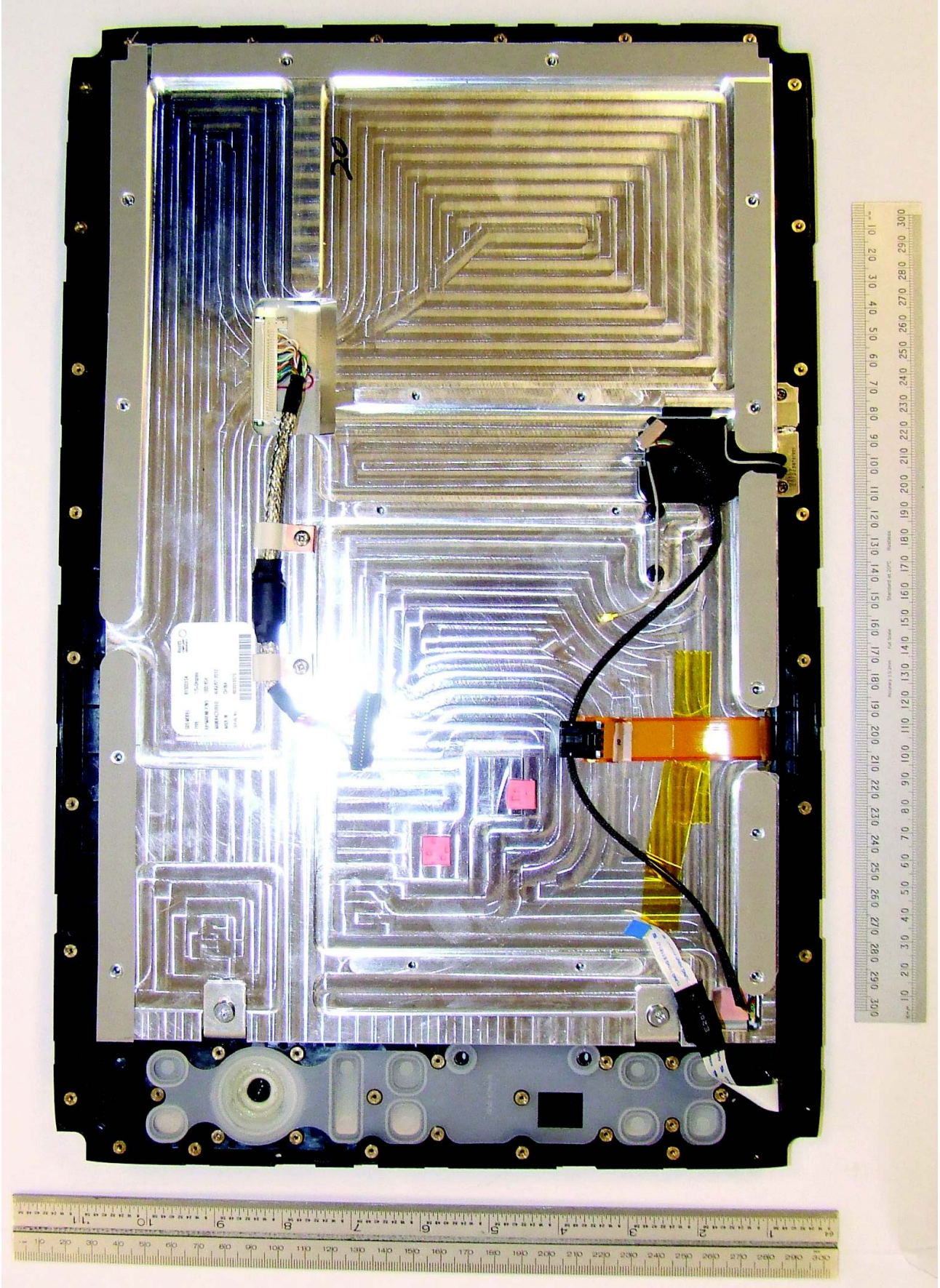


Figure 7 - Rear of e165 LCD with heatsink fitted

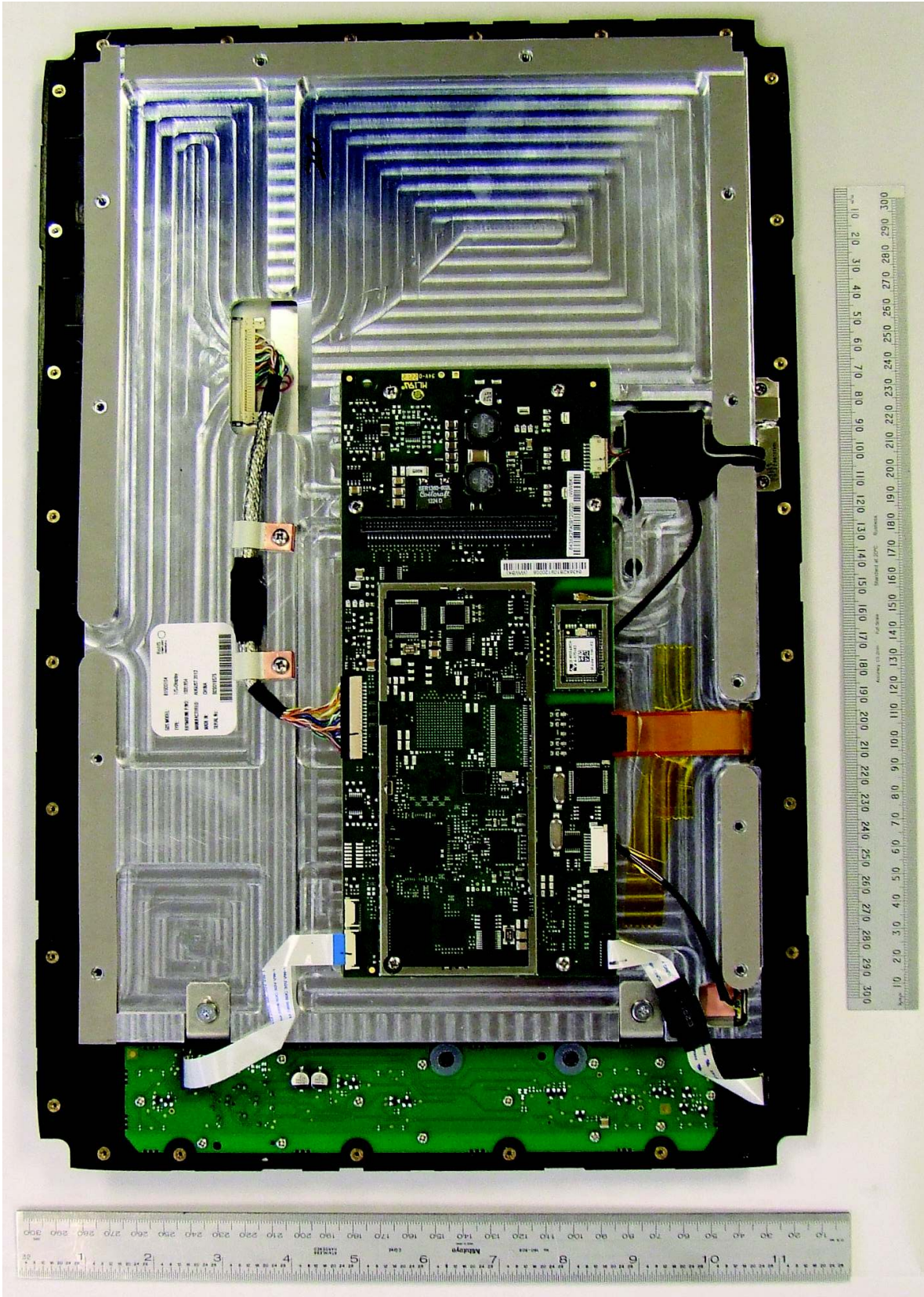


Figure 8 - Rear of e165 LCD with heatsink and location of CPU board.

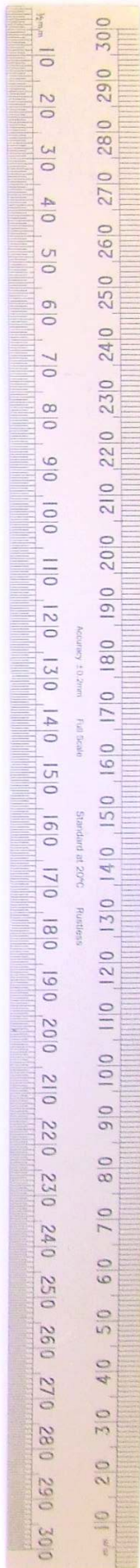
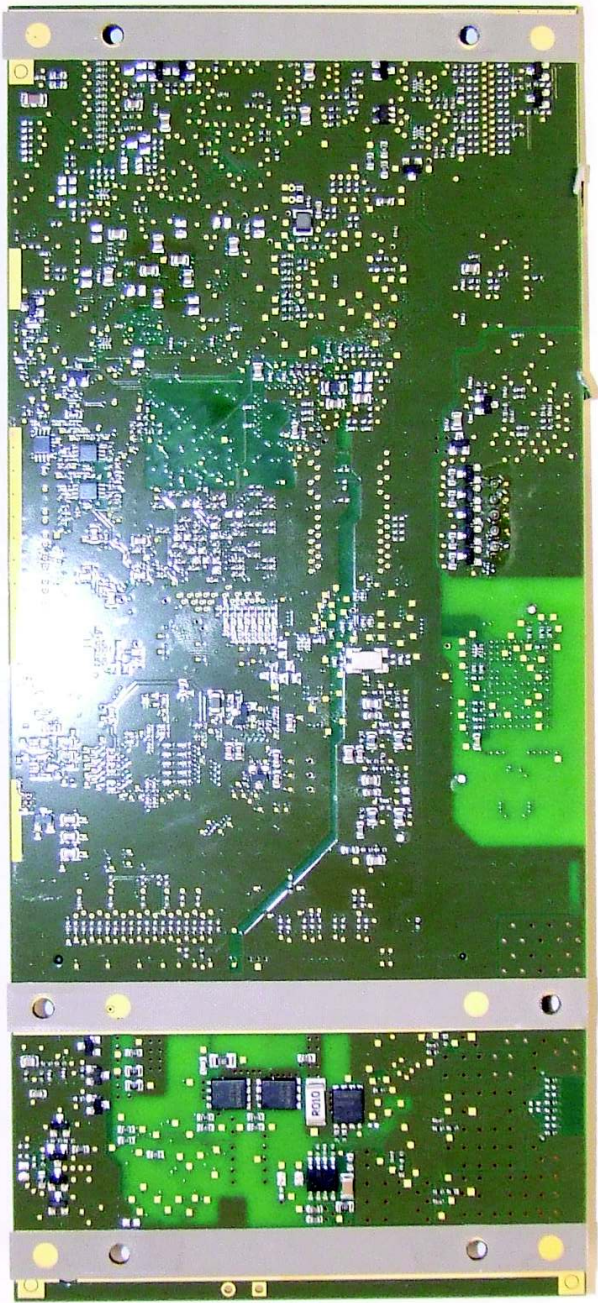
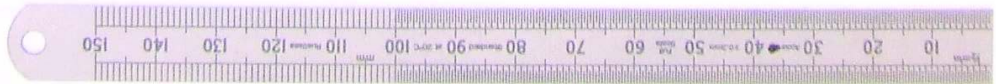


Figure 9 - Rear of CPU PCB

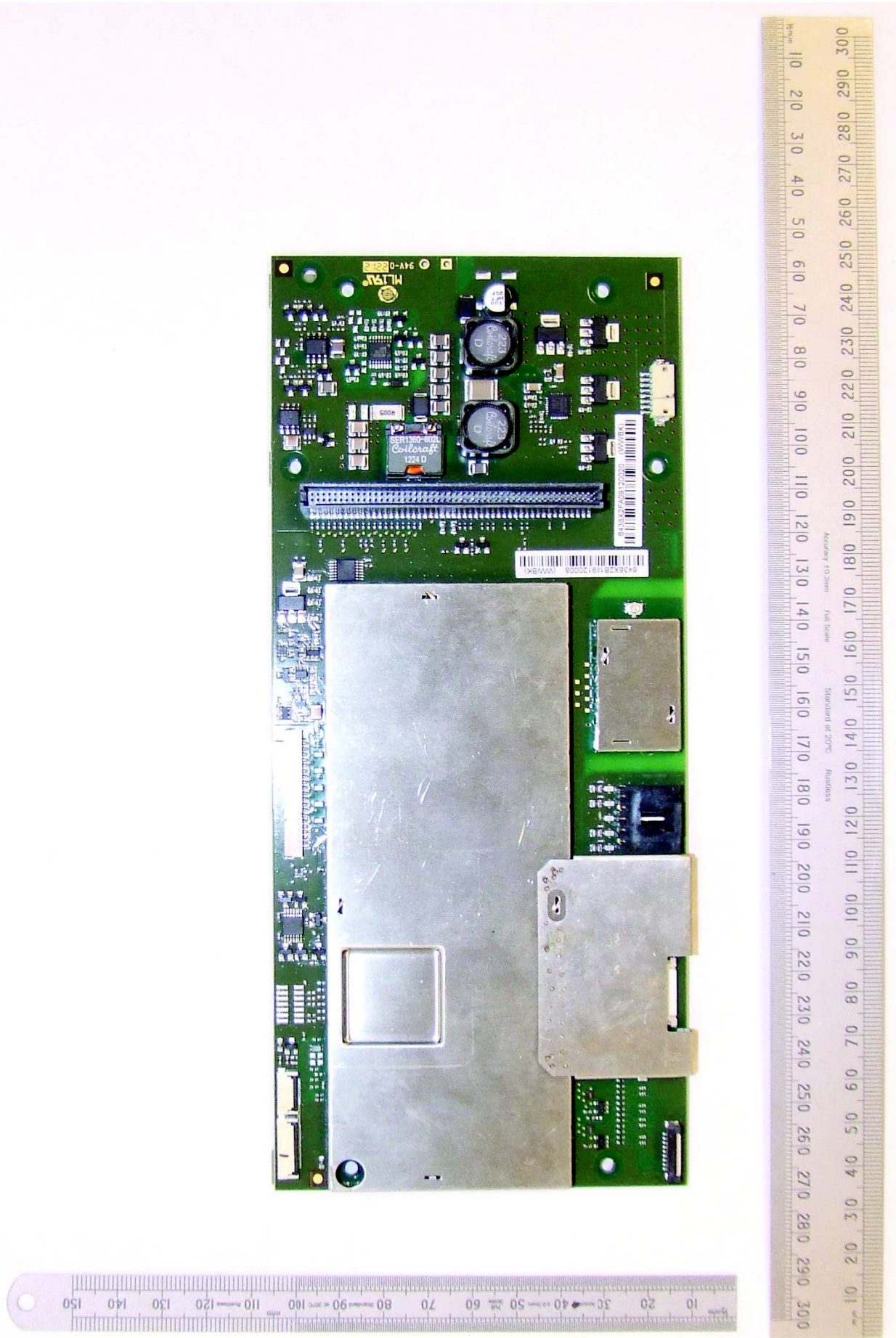


Figure 10 - Top of CPU PCB

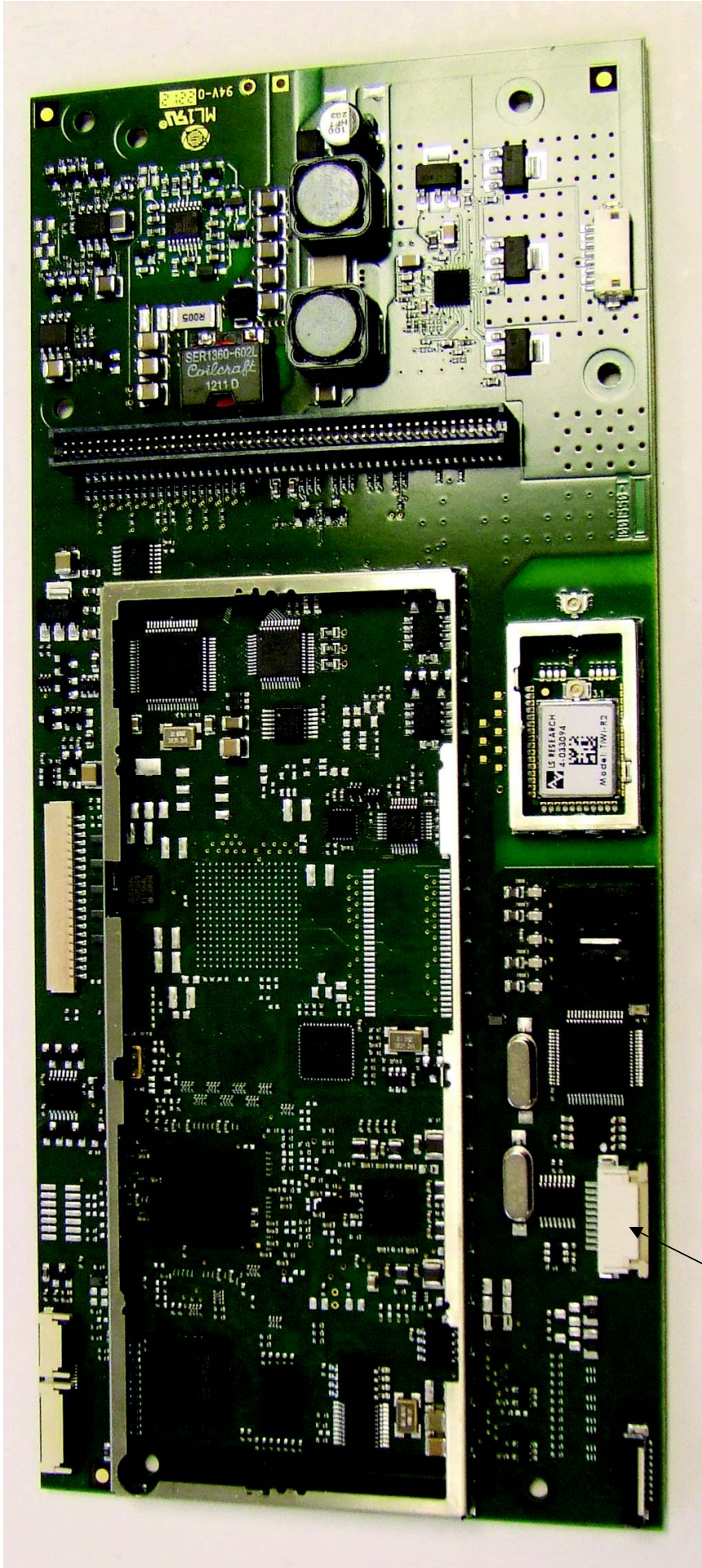


Figure 11 - Top of CPU PCB - cans removed

White connector not fitted in production – fitted for development only



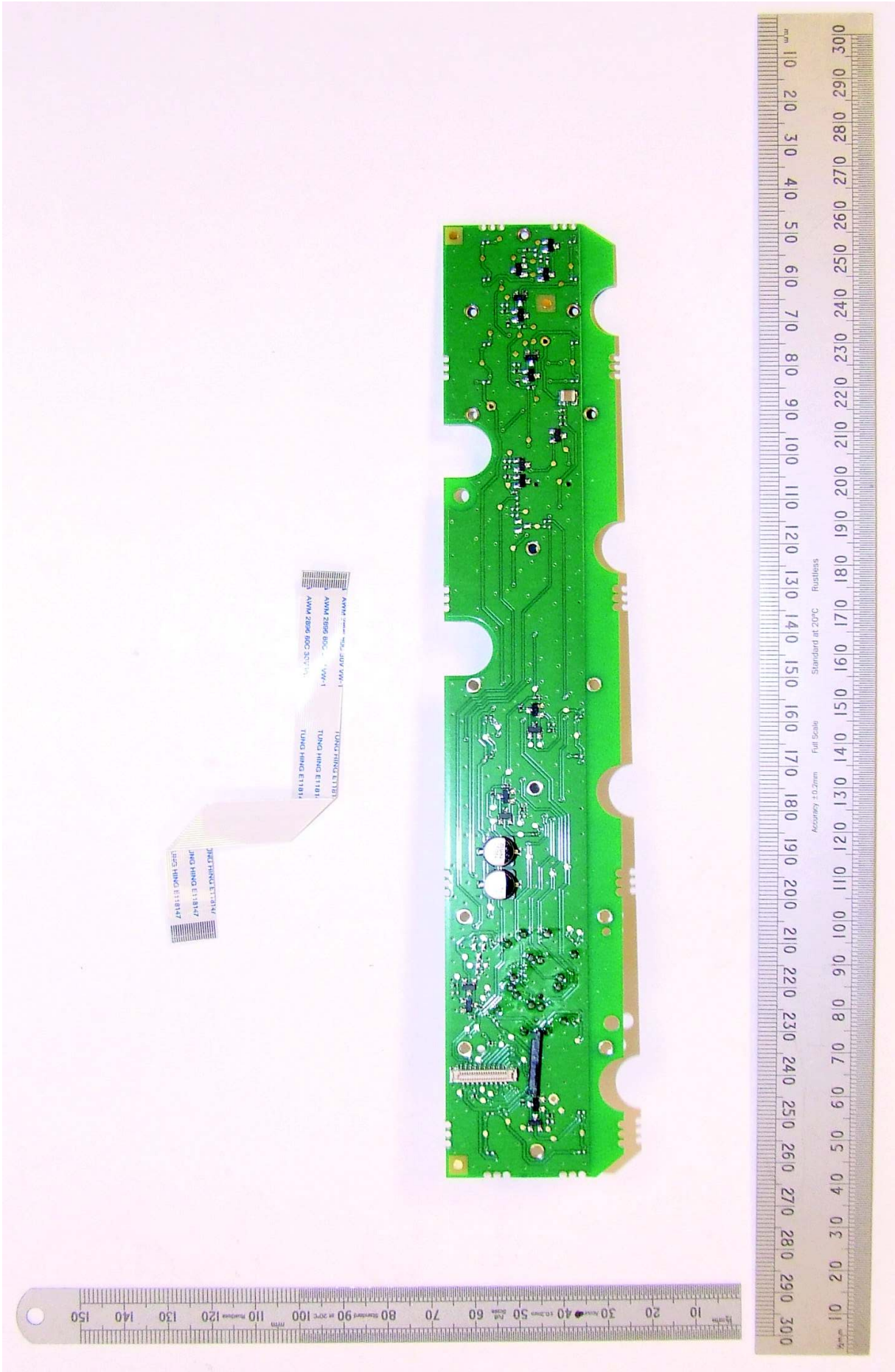


Figure 13 - Keyboard bottom

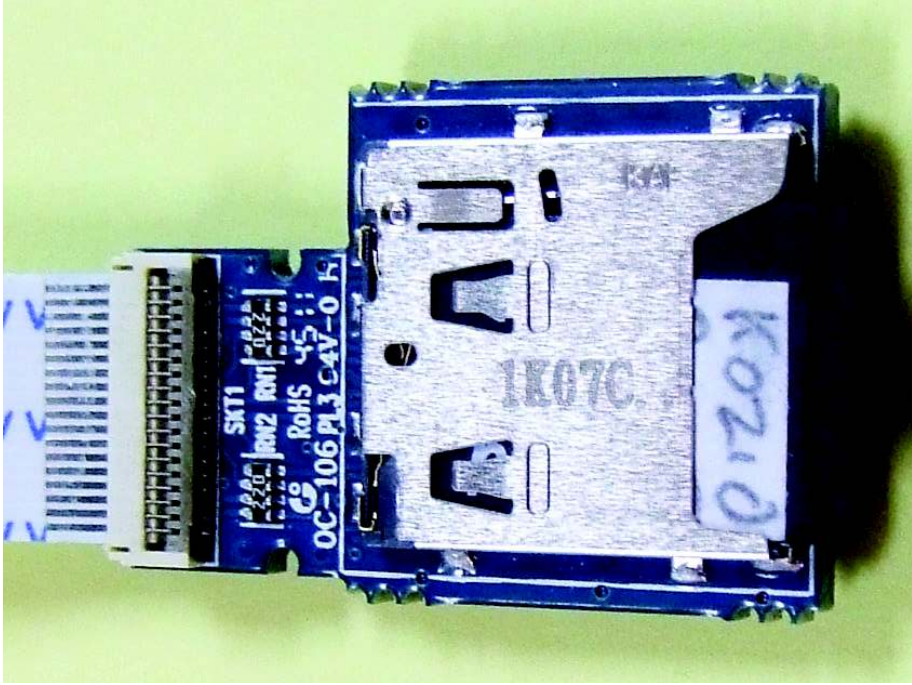


Figure 14 - uSD Top



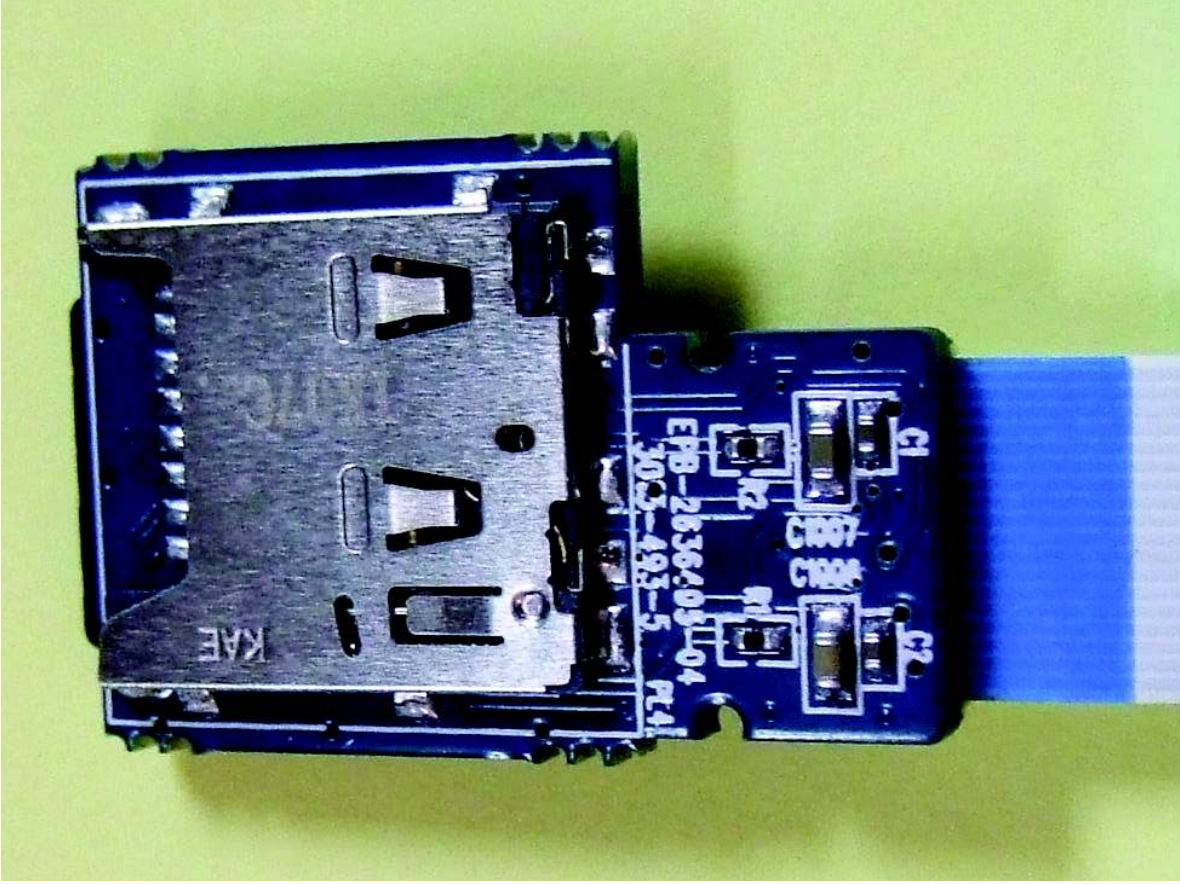


Figure 15 - uSD Bottom

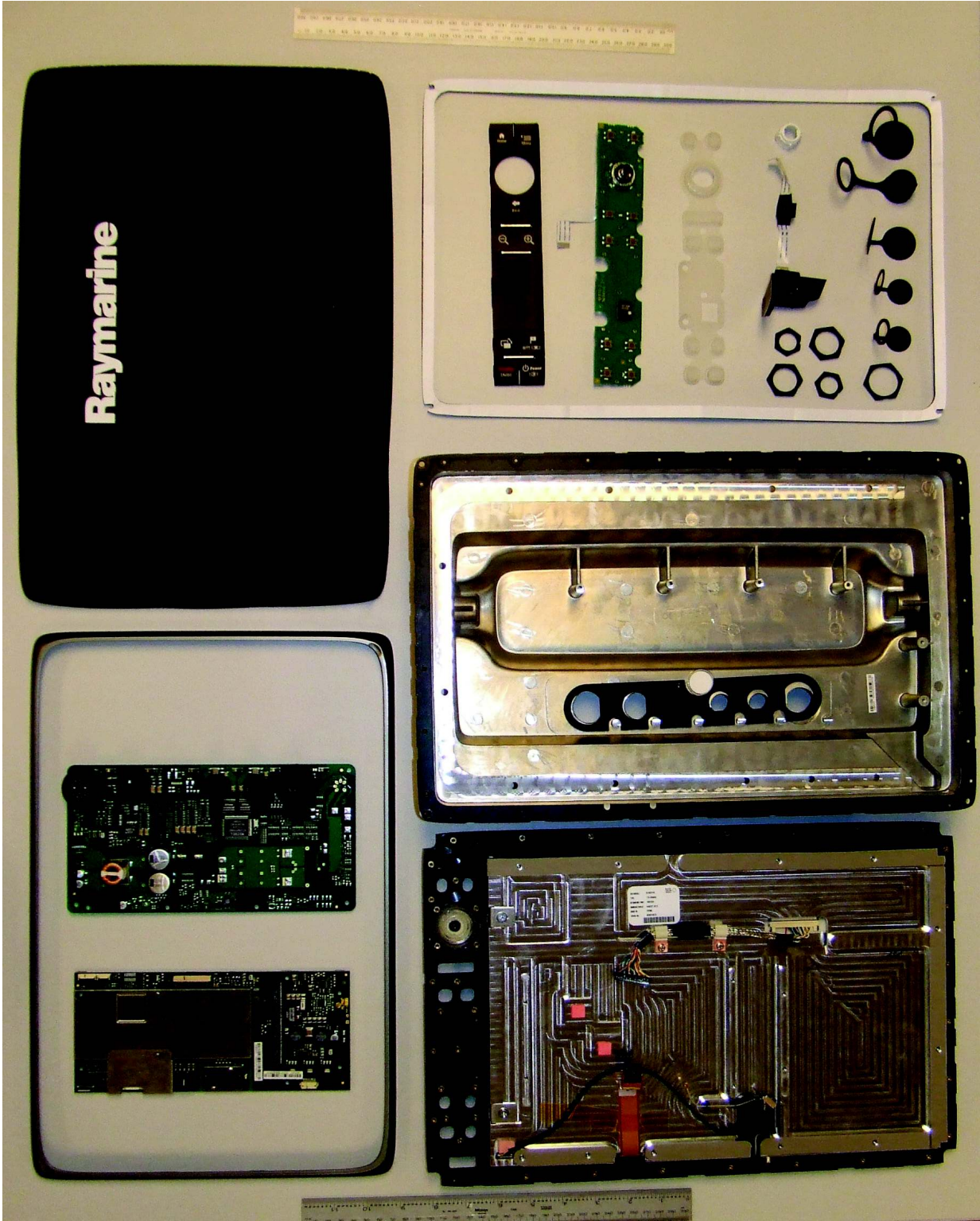


Figure 16 – e165 unit parts (1)