



**c95, c97, e95, e97 and c125, c127, e125, e127 multi-function displays**

**Internal Photographs**

# INDEX

Figure 1 - 12 Inch unit - keypad and facia removed.....	3
Figure 2 - Rear of 12 inch unit.....	4
Figure 3 - Inside of 12 inch rear casting showing connector / sonar board.....	5
Figure 4 - Inside of 12 inch rear casting.....	6
Figure 5 - connector side of connector / sonar board.....	7
Figure 6 - Rear of connector / sonar PCB.....	8
Figure 7 - read of 12 inch LCD - heatsink removed.....	9
Figure 8 - Rear of 12 inch LCD with heatsink fitted.....	10
Figure 9 - Rear of 12 inch LCD with heatsink and location of CPU board.....	11
Figure 10 - Rear of CPU PCB.....	12
Figure 11 - Top of CPU PCB.....	13
Figure 12 - Top of CPU PCB - cans removed.....	14
Figure 13 - 12 inch internal heatsink - rear.....	15
Figure 14 - 12 inch internal heatsink – top.....	16
Figure 15 - Keyboard Top.....	17
Figure 16 - Keyboard bottom.....	18
Figure 17 - uSD Top.....	19
Figure 18 - uSD Bottom.....	20
Figure 19 - GPS Top.....	21
Figure 20 - GPS Bottom.....	21
Figure 21 - 12 inch GPS screen.....	21
Figure 22 - 12 inch unit parts (1).....	22
Figure 23 - 12 inch parts (2).....	23
Figure 24 - 9 inch rear.....	24
Figure 25 - inside of rear casting with connector / sonar board fitted.....	25
Figure 26 - 9 inch LCD rear with heatsink and CPU fitted.....	26
Figure 27 - 9 inch LCD rear with heatsink removed.....	27
Figure 28 - 9 inch keyboard top.....	28
Figure 29 - 9 inch keyboard bottom.....	28



Figure 1 - 12 Inch unit - keypad and fascia removed



Figure 2 - Rear of 12 inch unit

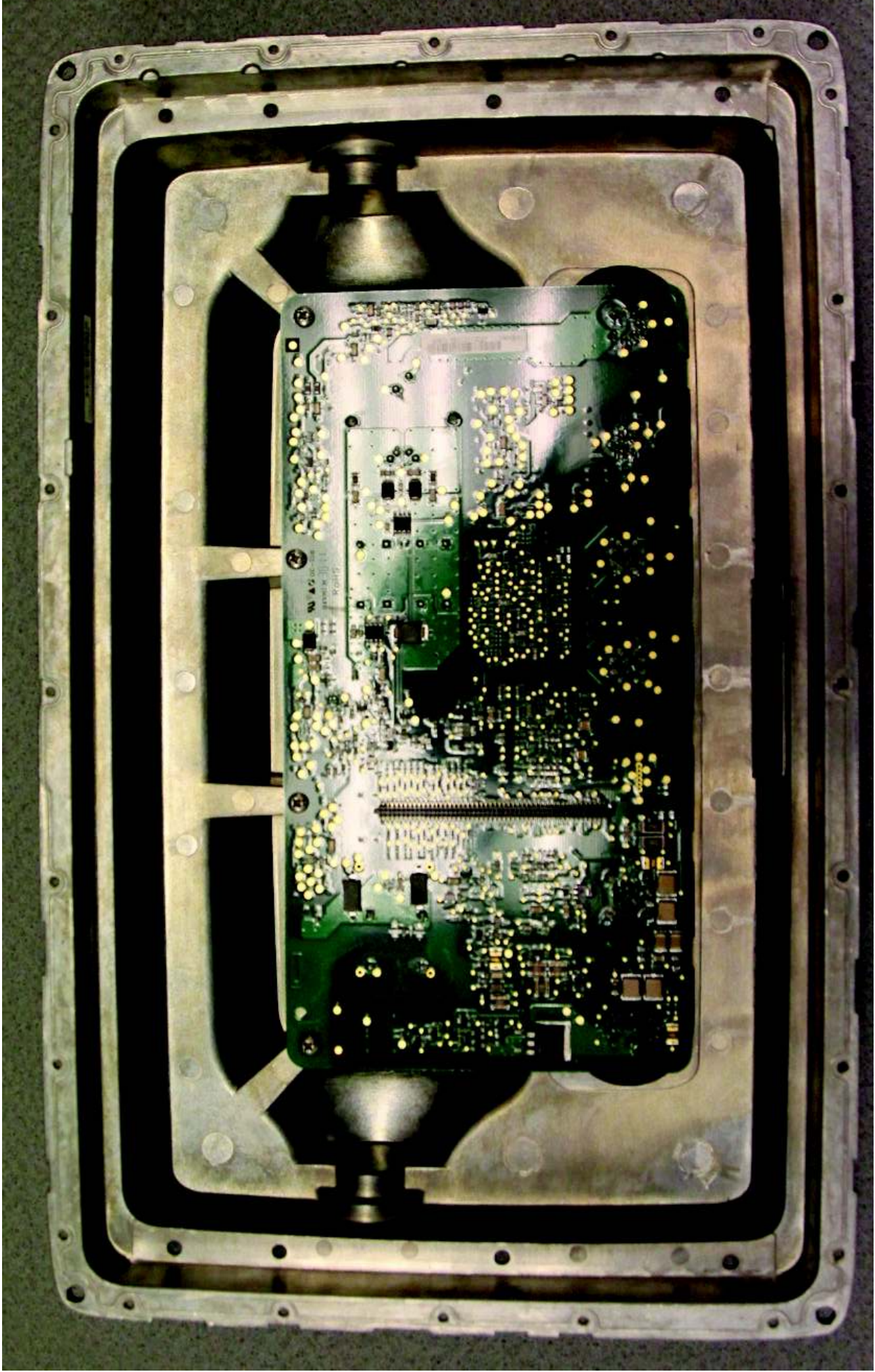


Figure 3 - Inside of 12 inch rear casting showing connector / sonar board

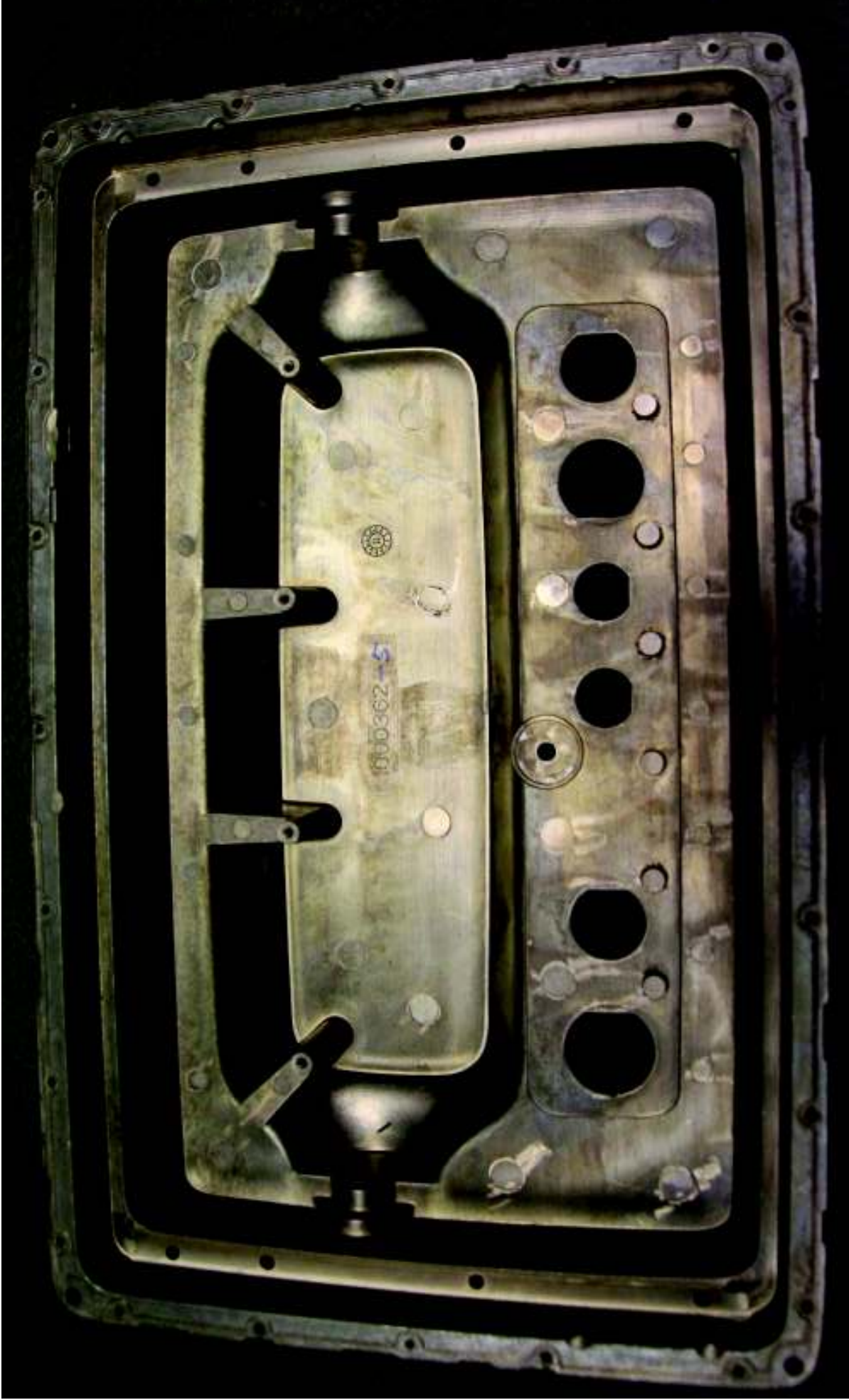


Figure 4 - inside of 12 inch rear casting

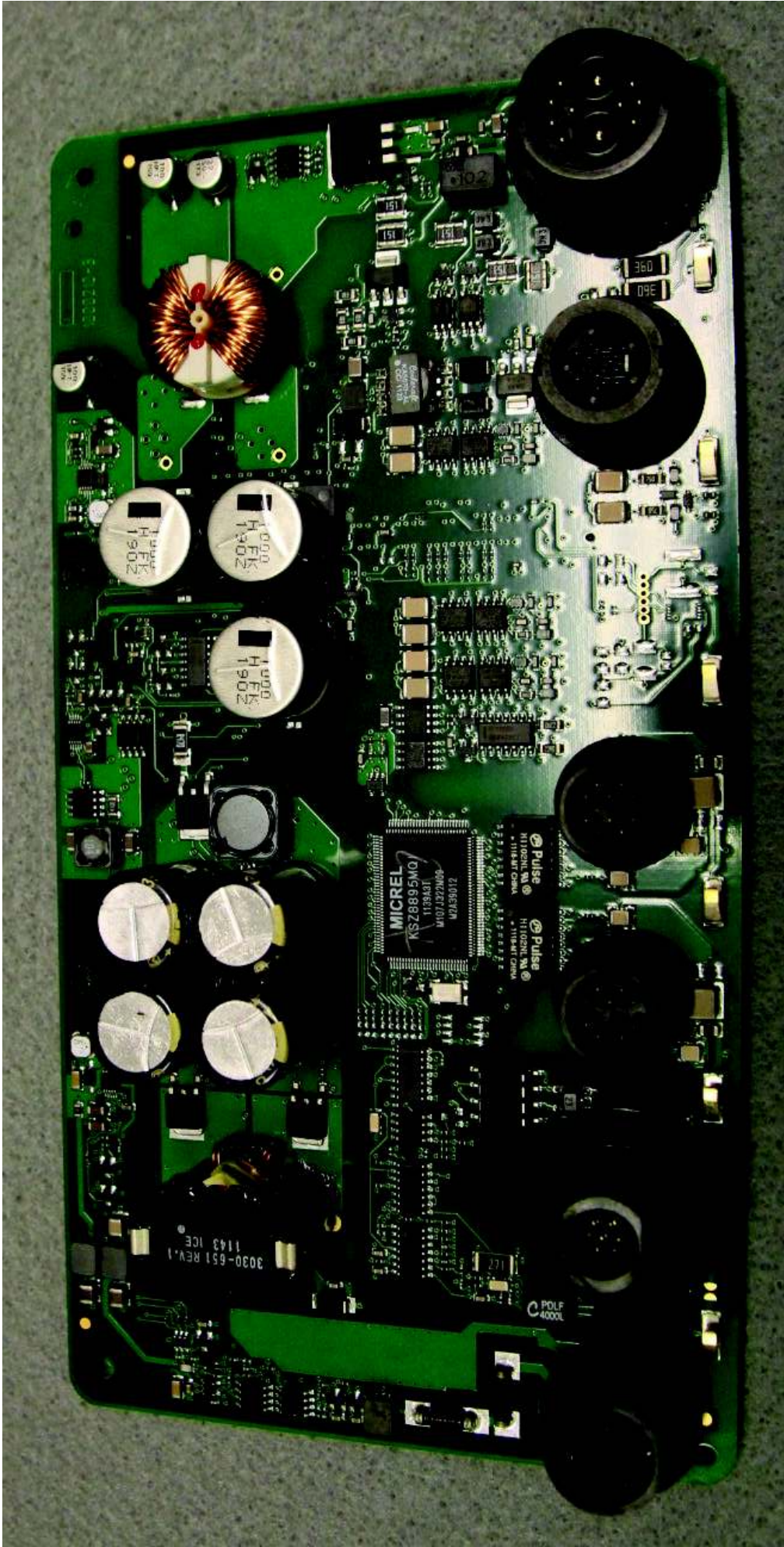


Figure 5 - connector side of connector / sonar board

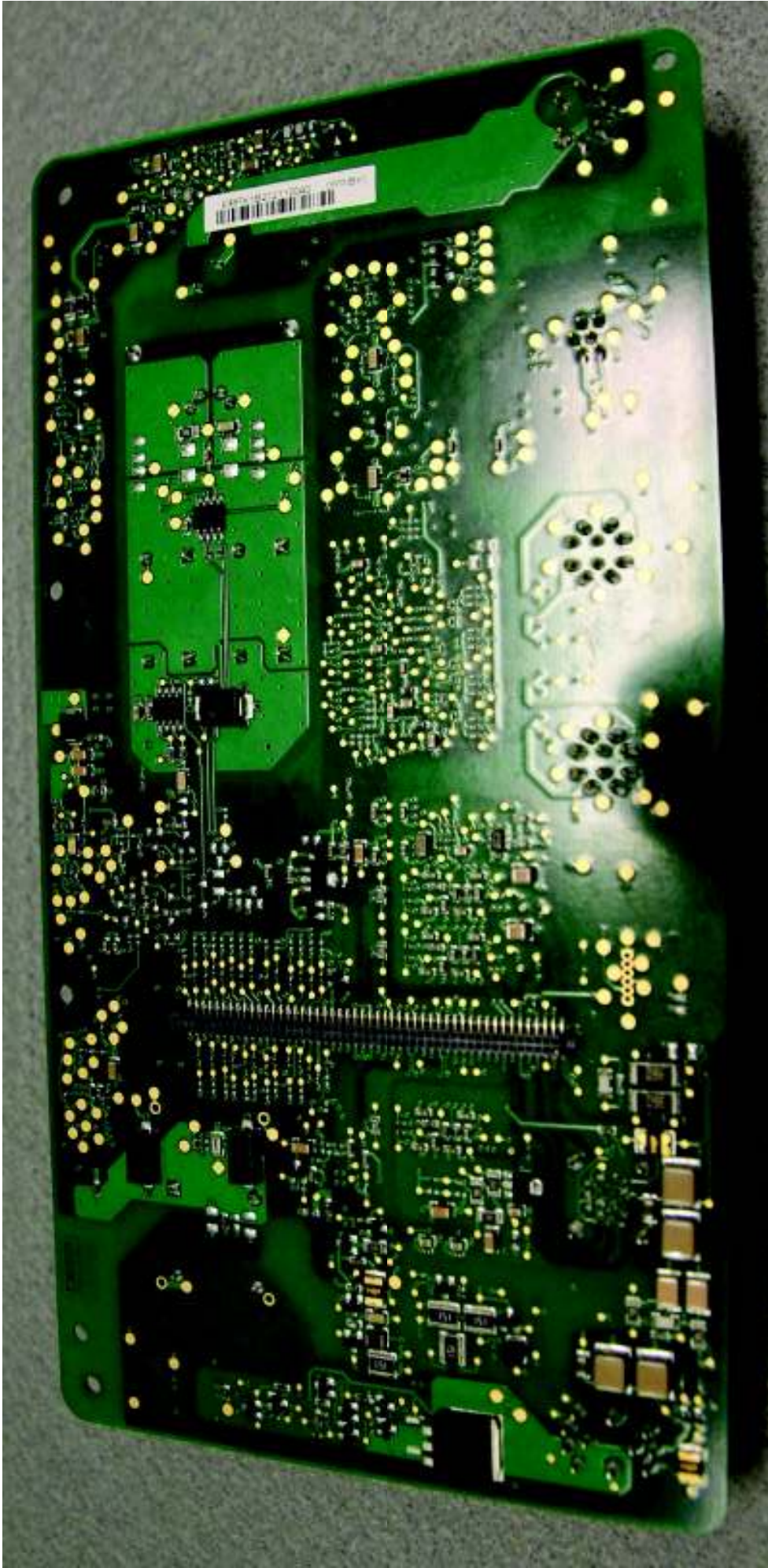


Figure 6 - Rear of connector / sonar PCB





Figure 7 - read of 12 inch LCD - heatsink removed



Figure 8 - Rear of 12 inch LCD with heatsink fitted



Figure 9 - Rear of 12 inch LCD with heatsink and location of CPU board.

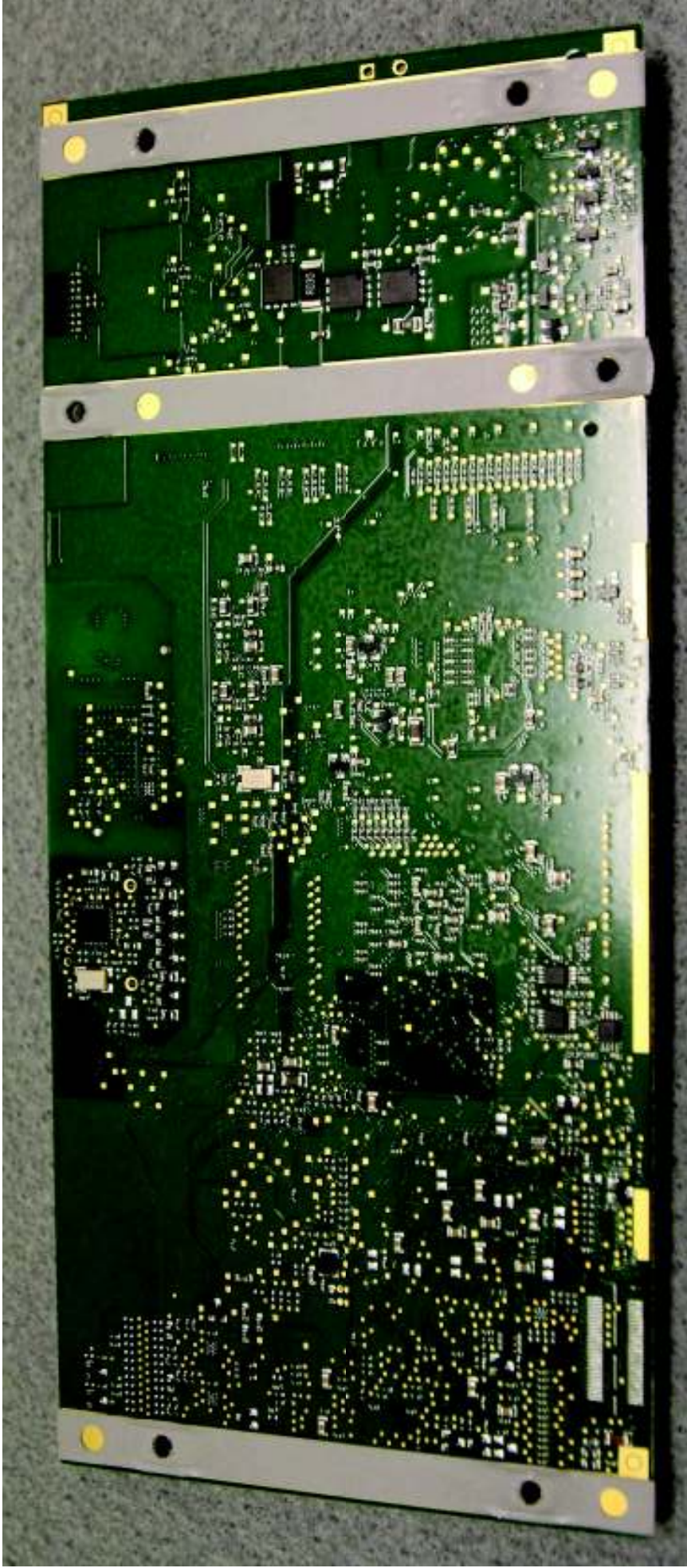


Figure 10 - Rear of CPU PCB

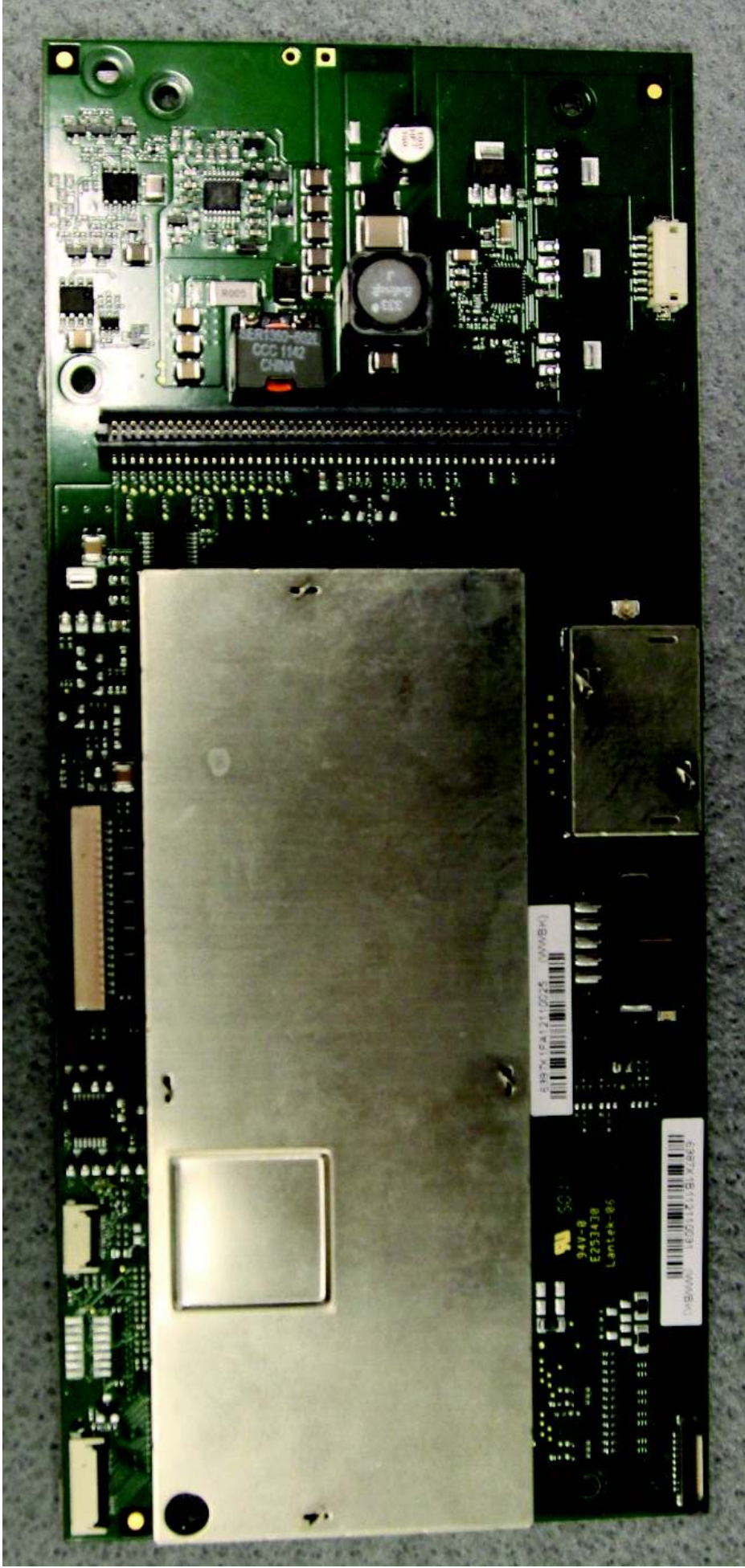


Figure 11 - Top of CPU PCB



Figure 12 - Top of CPU PCB - cans removed

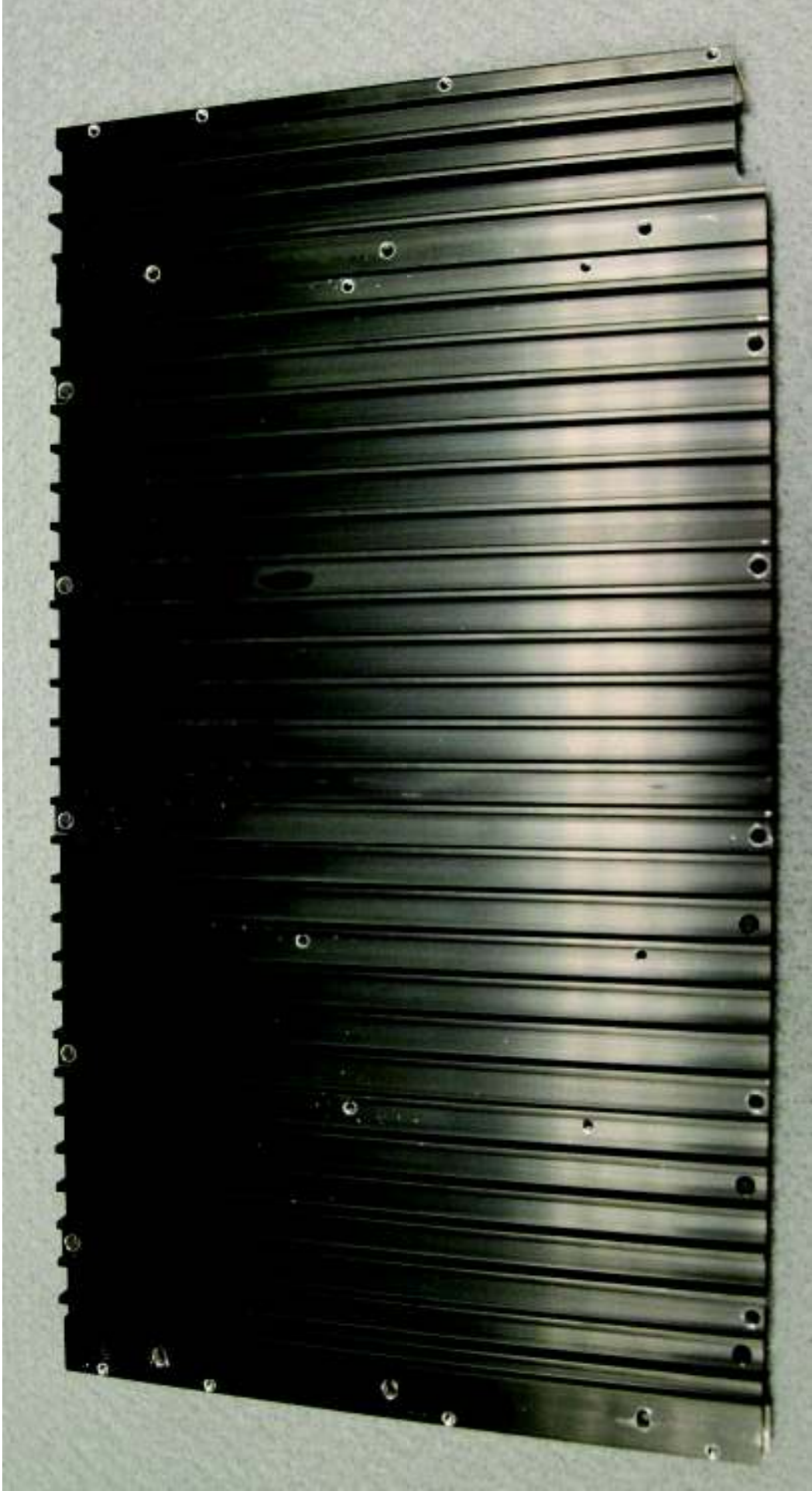


Figure 13 - 12 inch internal heatsink - rear



Figure 14 - 12 inch internal heatsink – top



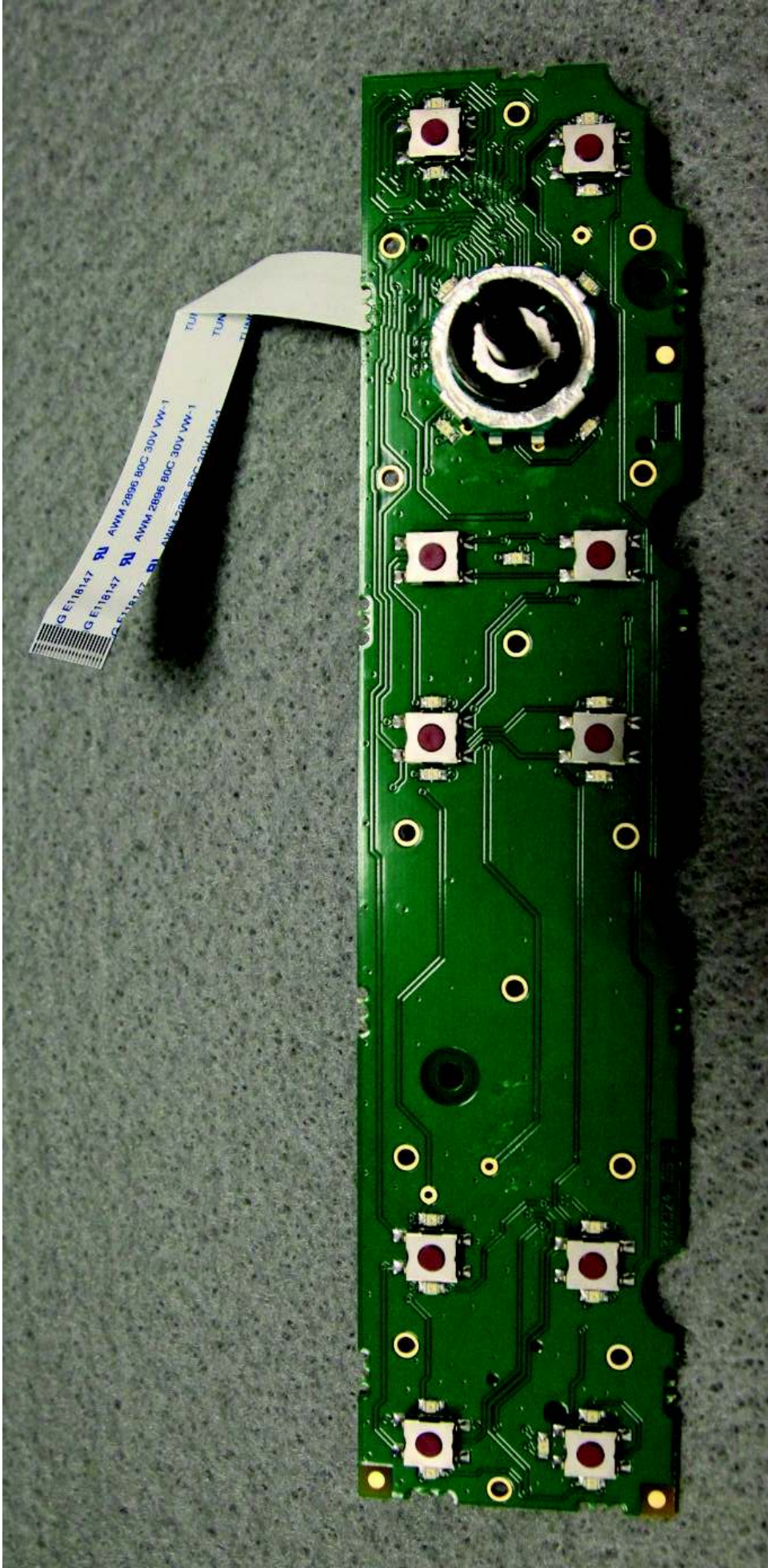


Figure 15 - Keyboard Top

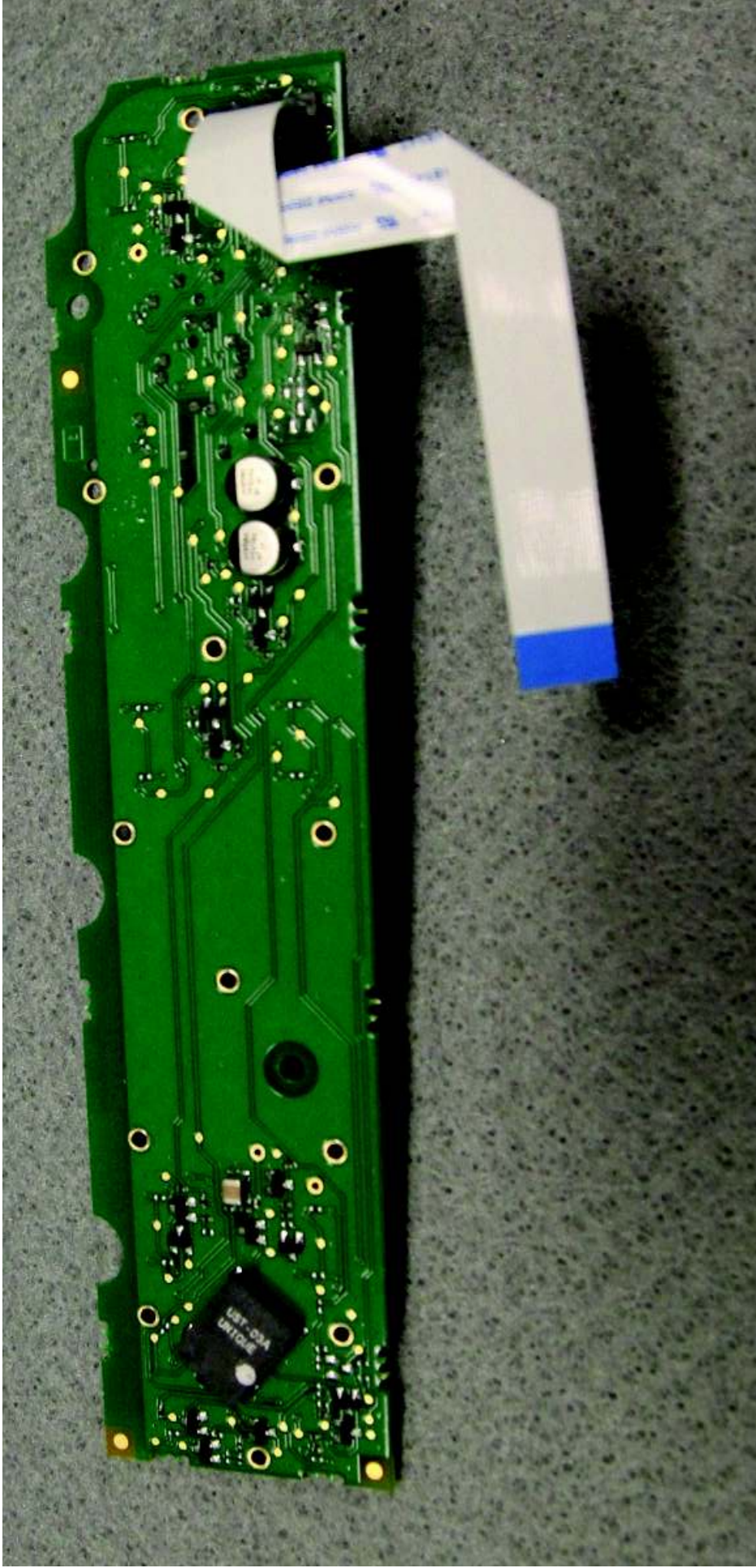


Figure 16 - Keyboard bottom

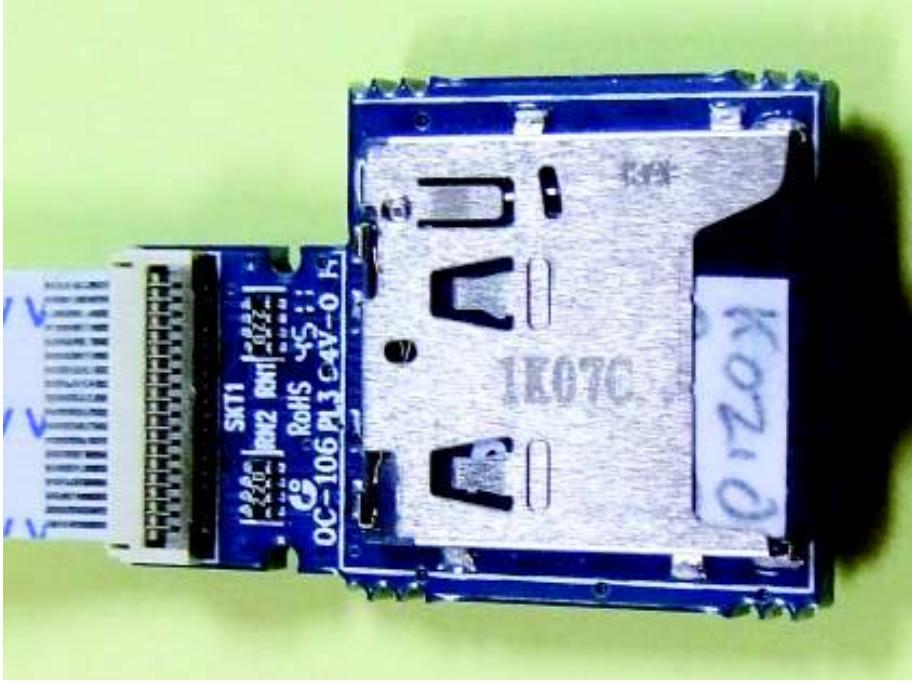


Figure 17 - uSD Top

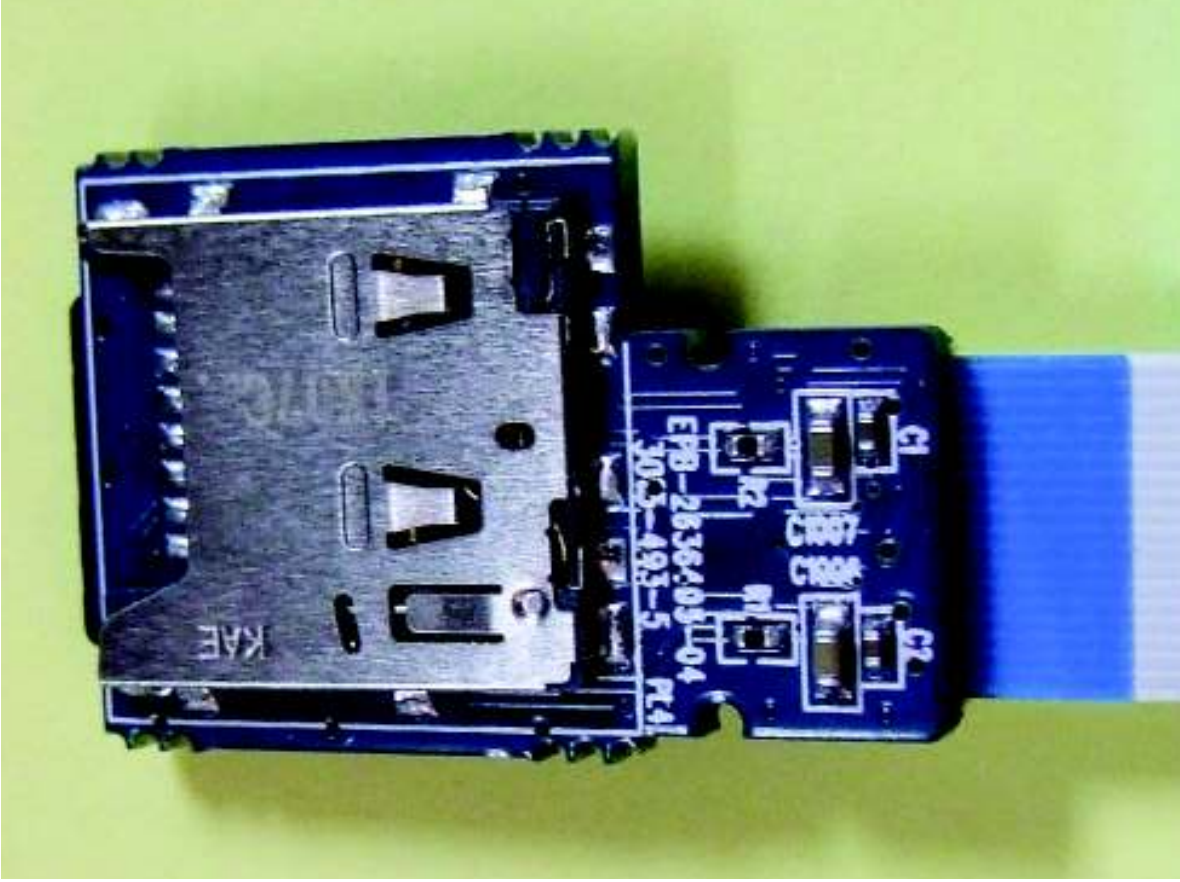


Figure 18 - uSD Bottom

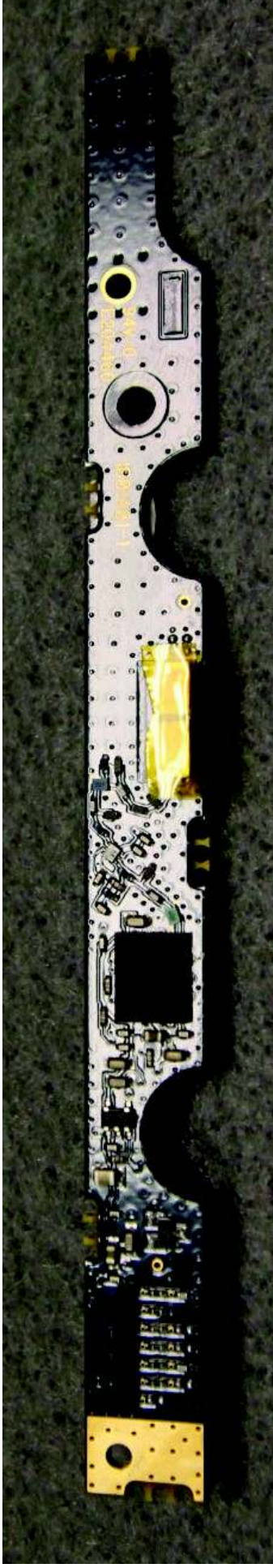


Figure 19 - GPS Top



Figure 20 - GPS Bottom



Figure 21 - 12 inch GPS screen

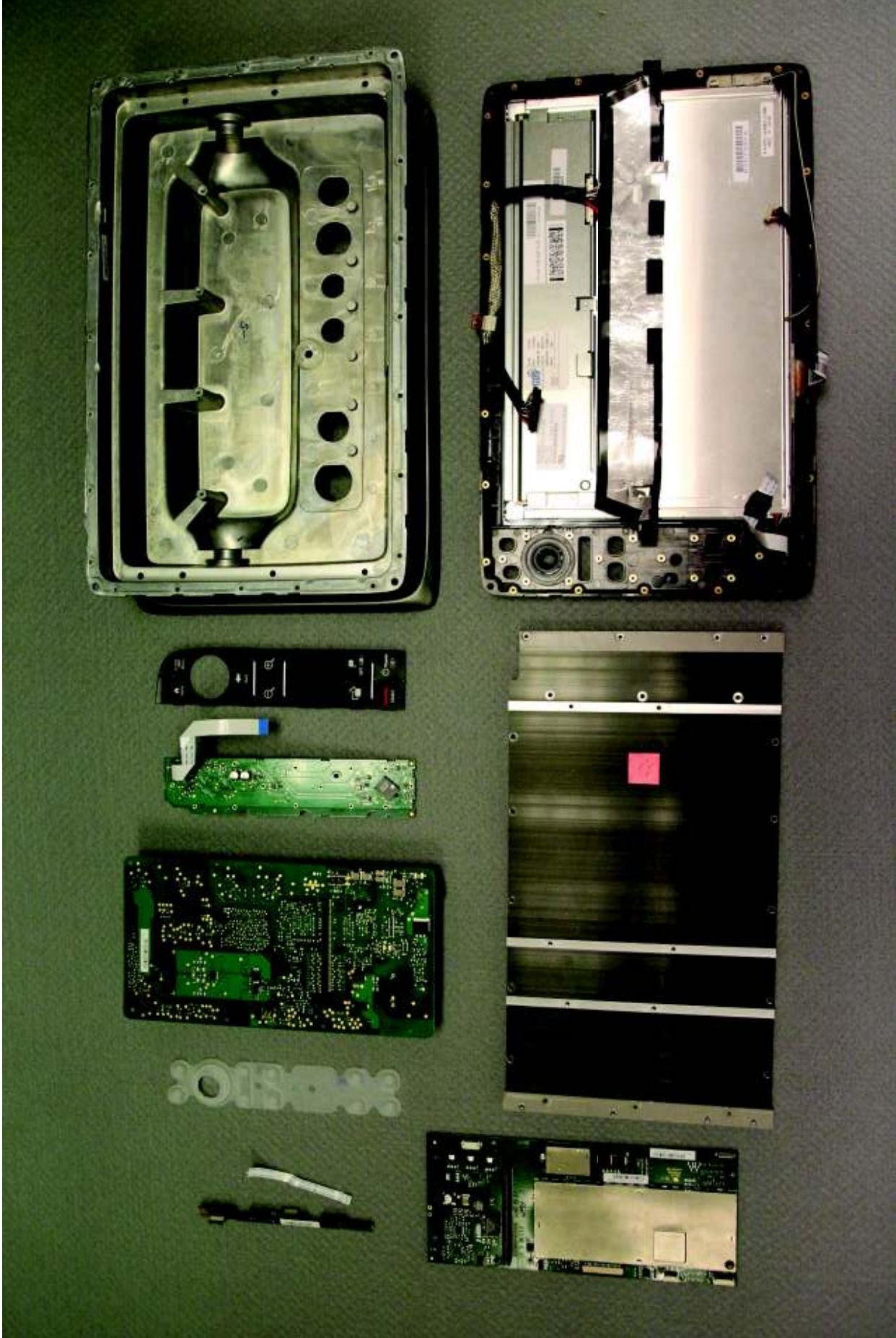


Figure 22 - 12 inch unit parts (1)

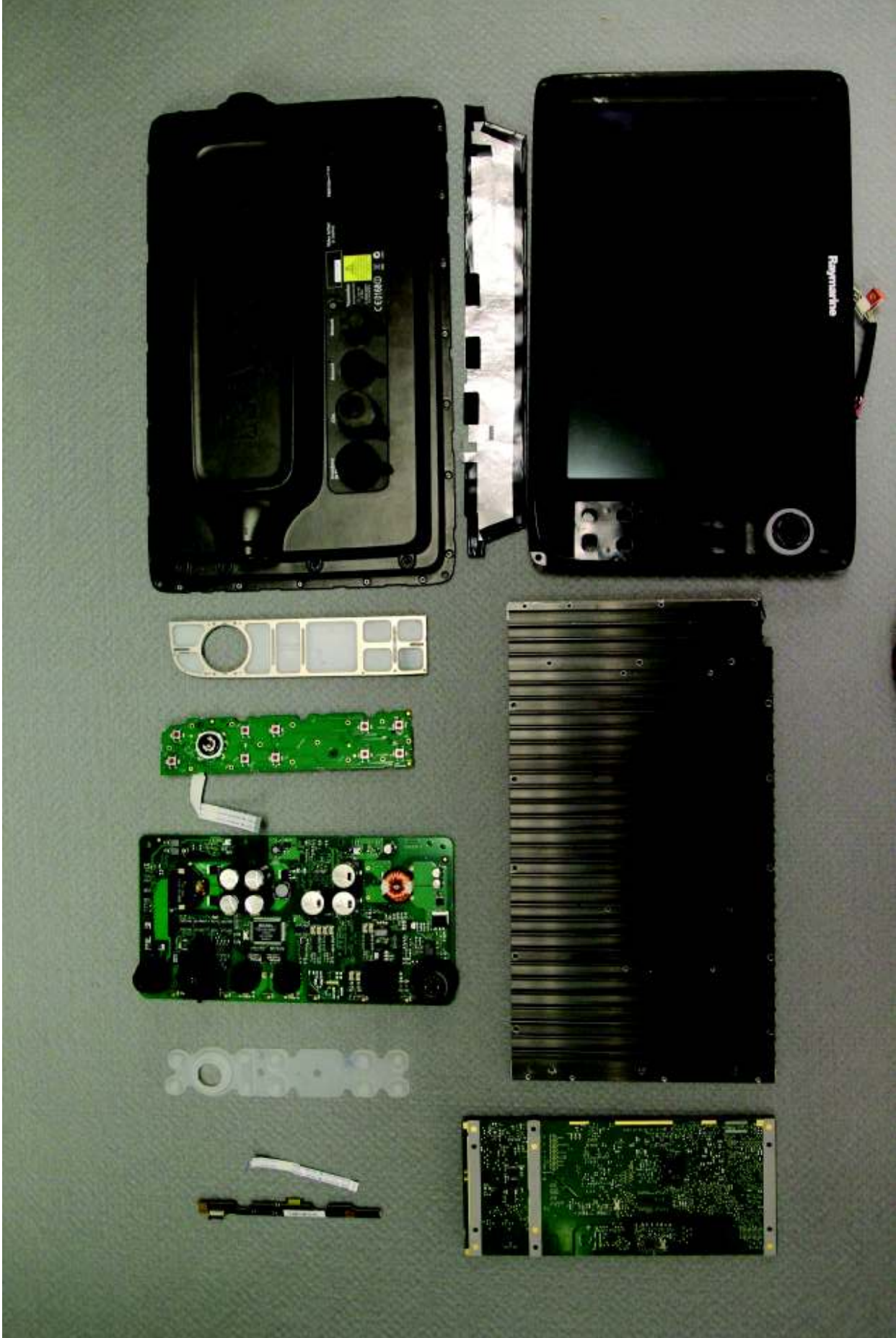


Figure 23 - 12 inch parts (2)



Figure 24 - 9 inch rear





Figure 25 - inside of rear casting with connector / sonar board fitted

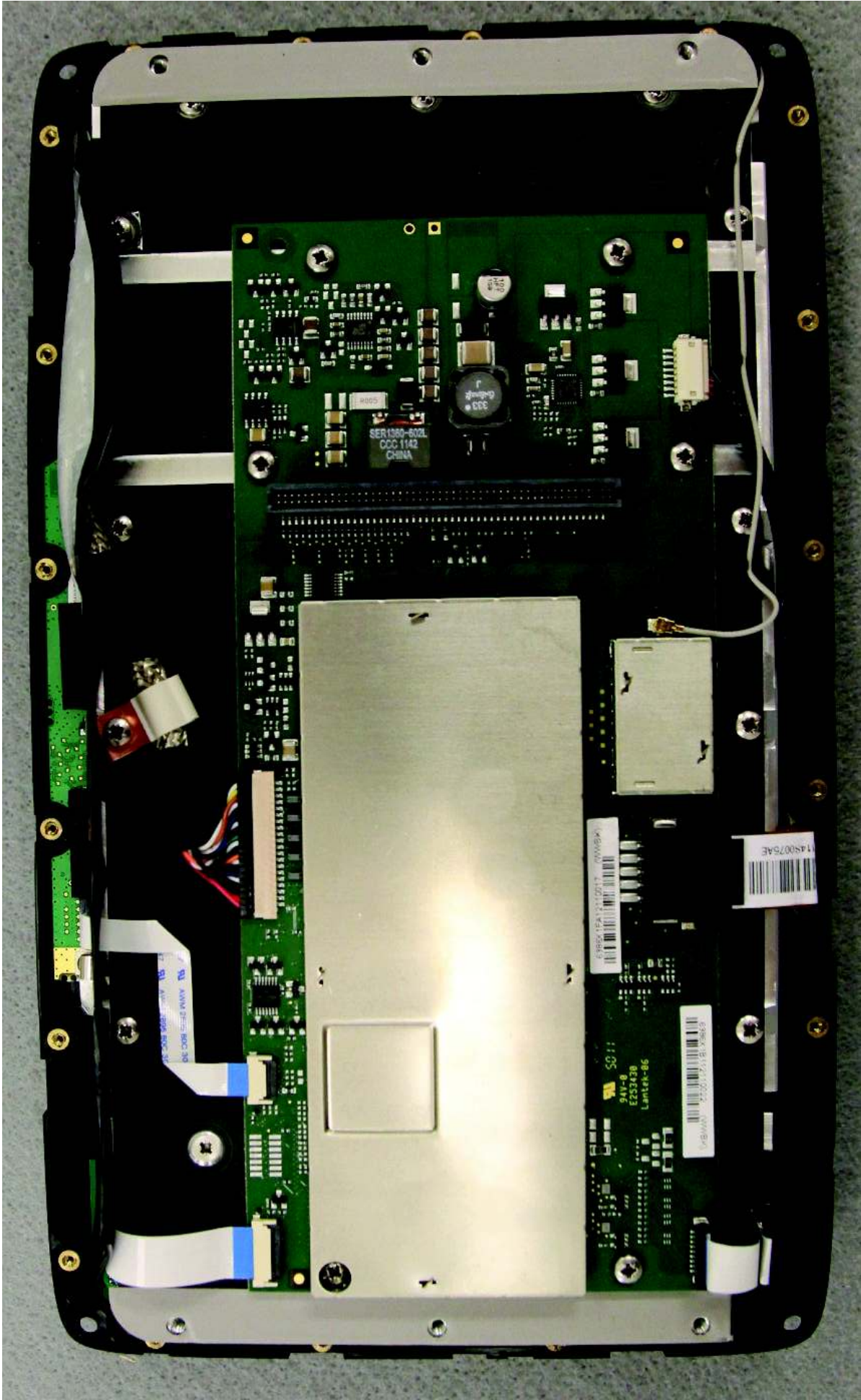


Figure 26 - 9 inch LCD rear with heatsink and CPU fitted



Figure 27 - 9 inch LCD rear with heatsink removed

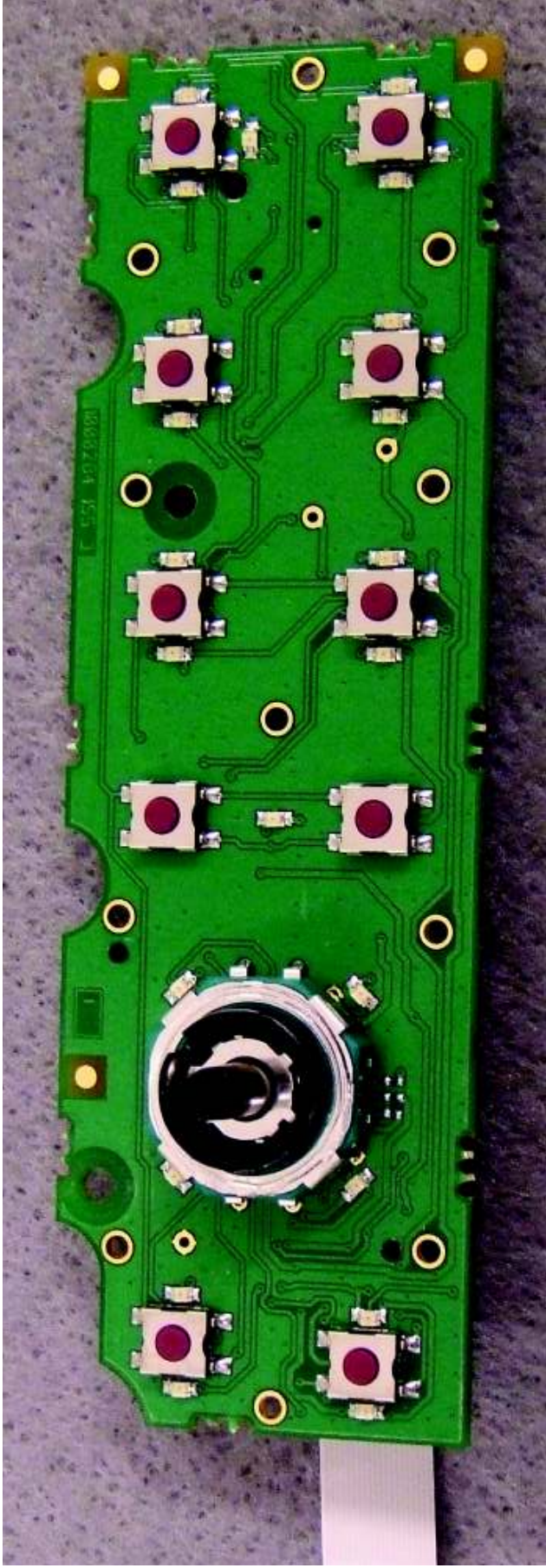


Figure 28 - 9 inch keyboard top

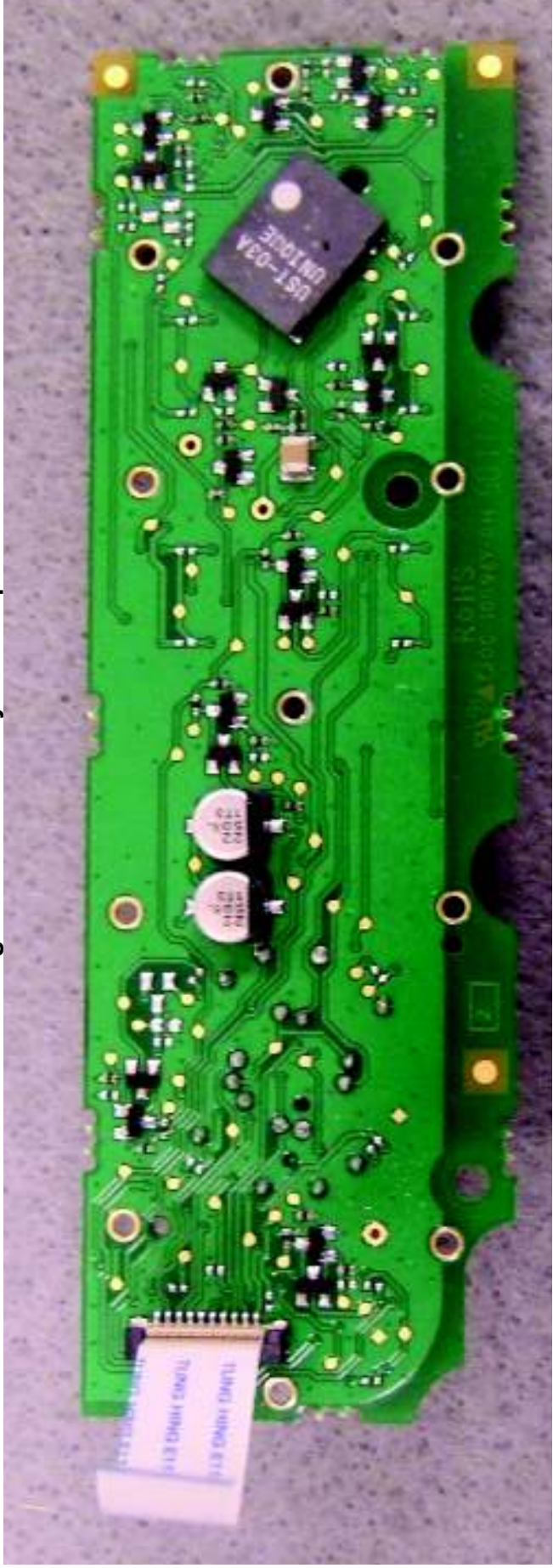


Figure 29 - 9 inch keyboard bottom